



# Georgia-Alabama Land Trust In-Lieu Fee Mitigation Program

Alex Robertson

Georgia-Alabama Land Trust, Inc.

404-861-1989

[arobertson@galandtrust.org](mailto:arobertson@galandtrust.org)

# Approved GALT-ILF Projects

- “Upedee Creek Stream Mitigation Site”
  - Lanier County, Georgia (Withlacoochee Stream)
  - Approved 2016; construction complete and first year monitoring has been submitted to Corps.
- “Cedar Creek Wetland Mitigation Site”
  - Coweta County, Georgia (Middle Chattahoochee Wetland)
  - Approved 2018; site protections in place
- “Tired Creek Stream Mitigation Site”
  - Mitchell County, Georgia (Withlacoochee Stream)
  - Approved 2018; construction underway

# GEORGIA- ALABAMA LAND TRUST IN-LIEU FEE PROGRAM



GLT-ILF Service Areas  
April 2018

GLT-ILF Advance Credit Fee Schedule (January 2017)

GLT-ILF Service Area	Stream Credit Total Cost*	Wetland Credit Total Cost*
Upper Savannah HUCs 03060102-0105	--	\$55,000.00
Withlacoochee HUCs 0311xxxx and 0312xxxx	\$104.50	--
Upper Chattahoochee HUC 03130001	--	\$60,500.00
Upper Coosa HUCs 03150001-0103 and 03150105	--	\$49,500.00
Etowah HUC 03150104	--	\$60,500.00
Tennessee HUCs 06xxxxxx	* contact	* contact
Lower Flint/Middle Flint/Lake Blackshear HUC 03130006	\$121.00	--
Lower Ocmulgee HUC 03070101	--	\$55,000.00
Upper Ocmulgee HUC 03070103	--	\$55,000.00
Satilla/St. Marys River HUC 03070204 (non-tidal)	* contact	--

\*Credit pricing and fees will be reviewed periodically and are subject to change. "total cost" listed includes 2% temporal loss fee and 2% admin fee

#### TEMPORAL LOSS FEE

A 2% temporal loss fee will be added.

Temporal loss fees are used to provide resource mitigation.

#### ADMINISTRATIVE FEE

A fee of up to 2% will be added for program administration.

#### AVAILABLE CREDITS / CREDIT LEDGERS

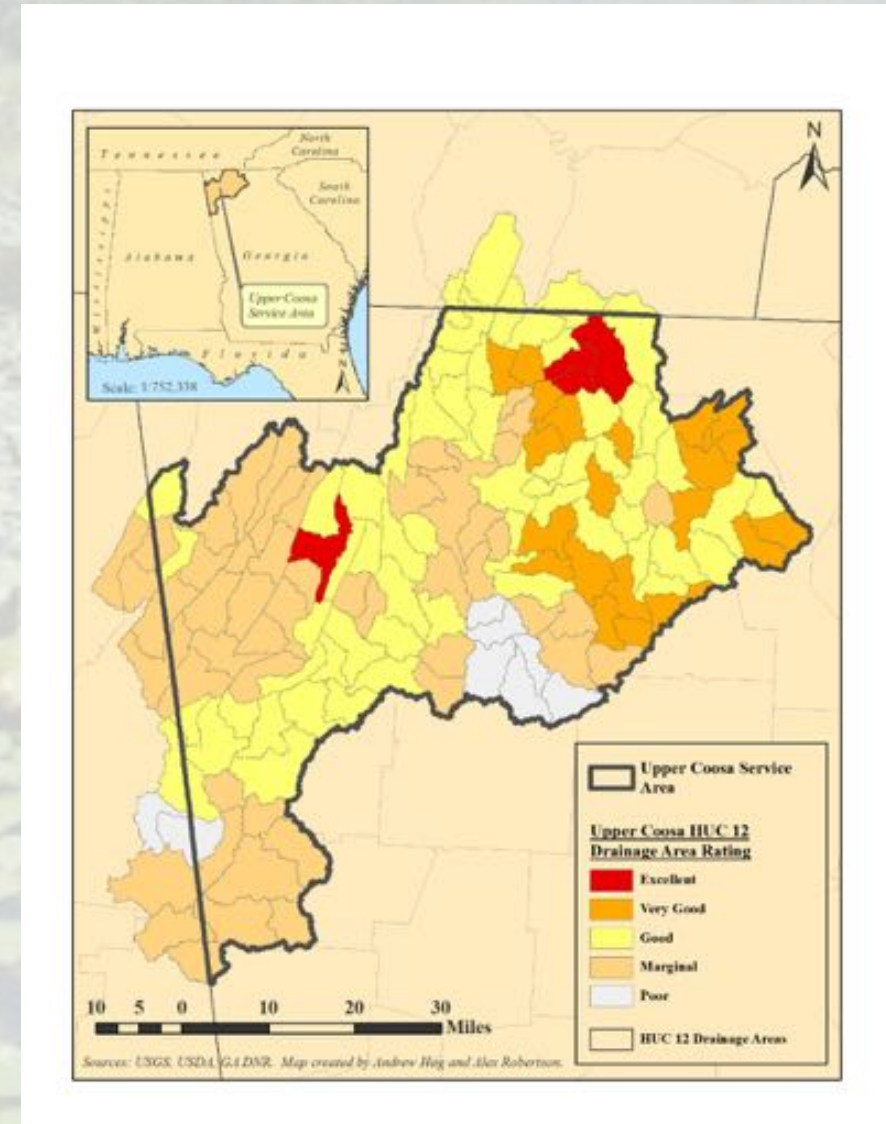
Available credits are tracked by the Corps in ledgers on the [Registry in Lieu Fee and Bank Information Tracking System \(RILFIS\)](#)

Rev 04/2018

326 Old Lodge Road  
Piedmont, AL 36272  
Phone 404-861-1989 • Fax 888-876-3883  
[www.galatlant.com](http://www.galatlant.com)

# \*\*\*DRAFT\*\*\* MODEL – Upper Coosa Wetland Siting Tool

- Considering “Two-Part” Siting Tool
  - First model at HUC-12 Level
  - Second model to compare proposed sites against each other
- Possible Datasets (HUC-12 Level Model)
  - Percentage “Favorable” Cover (NLCD)
  - 303d Listed Streams and Lakes
  - Percentage Impervious Surface (NCLD)
  - Land Use Change (NCLD)
  - Percentage Protected Lands (GADNR)
- Possible Datasets (Site Comparison Model)
  - Slope
  - Soil Type
  - Hydrology
  - Existing Land Cover
  - Presence of/Proximity to High-Priority Habitat (GADNR), TES Occurrences, and/or and Critical Habitat for TES (USFWS)



# \*\*\*DRAFT\*\*\* MODEL – Upper Coosa Wetland Siting Tool – PAGE 2

## • Potential Scoring Methodologies for HUC-12 Level Model

### • “Standard Deviation System”

- Calculate mean and standard deviation of entire dataset and assign score values to each HUC based upon where data point falls with respect to standard deviation(s) from the mean.

### • “Range Scoring System”

- Distribution of scores driven by high and low values in given dataset. Calculate a series of means to generate breakpoints and score values for each HUC.

### • “Quartile Scoring System”

- Separate dataset by medians to generate a score range where each category of score value has the same (or very similar) frequency.

