

# *Fact Book*

*2010-11*

STETSON  
UNIVERSITY

## TABLE OF CONTENTS

INTRODUCTION .....	3
GENERAL INFORMATION.....	5
Statement of Institutional Purpose.....	5
I. Educational Mission.....	5
II. Values and Vision.....	5
III. Heritage and Character .....	6
Accreditation.....	7
KEY INDICATORS .....	8
Student Retention Analysis.....	8
Graduation Rates.....	9
Tuition and Fees.....	10
Stetson - Historical.....	10
2010 - 11 Peer Schools Comparison - Tuition and Fees.....	11
Financial Information .....	11
Endowment - Market Value.....	11
Endowment - Peer Schools .....	12
Annual Budget.....	12
Expenses .....	13
Alumni Giving Profile - Undergraduate .....	13
Fundraising Report .....	14
Student Financial Aid .....	15
Scholarships/Grants - Undergraduates.....	15
Total Aid and Self-Help* (2010-2011).....	15
ACADEMIC PROGRAMS .....	16
Degrees and Programs Offered (2010-11).....	16
College of Arts and Sciences.....	16
School of Business Administration .....	16
School of Music.....	17
Graduate.....	17
Enrollment by Major - Undergraduate (Fall 2010).....	18
Enrollment by Minor - Undergraduate (Fall 2010) .....	19
Enrollment by Major - Graduate (Fall 2010).....	19
Enrollment by Major - Undergraduate (Historical) .....	20
Degrees Awarded by Major - Undergraduate (Historical) .....	22
Degrees Awarded - by Degree Type (Historical) .....	23
College of Law.....	24
STUDENT INFORMATION .....	25
SAT / ACT Scores.....	25
Range of SAT / ACT Scores .....	25
First Year & Transfer Students.....	26
Student Life Statistics* .....	28
Enrollment of New Students by School.....	28

Enrollment .....	29
Census Headcount, Fall Semester (Historical) .....	29
Census Enrollment by Campus.....	30
Enrollment by Gender (Historical) .....	30
Headcount, Fall Semester (Historical - 1954 to 2008) .....	31
College or School & Gender (Fall 2010).....	32
Class Standing* - Undergraduate (Fall 2010) .....	33
Class Standings - Undergraduate (Historical) .....	33
Ethnicity (Fall 2010).....	34
Enrollment By Ethnicity - Undergraduate (Historical) .....	34
ALANA Enrollment - Undergraduate (Historical).....	34
International / Non-Resident Students Home country - Undergraduate (Fall 2010).....	35
Number of Foreign Countries represented (Historical) .....	35
Enrollment by Home State - Undergraduate (Historical) .....	36
Undergraduate Enrollment by Florida County (Historical).....	38
Enrollment by Religious Affiliation - Undergraduate (Fall 2010) .....	38
Age Distribution (Fall 2010) .....	39
Average Senior cumulative GPA's (Historical) .....	40
Class Statistics .....	41
Average Class Size - Undergraduate (Fall 2010) .....	41
Average Class Size - Undergraduate (Historical).....	41
<b>STUDENT LIFE.....</b>	<b>42</b>
Athletics .....	42
Intercollegiate Athletics.....	42
Club Sports .....	42
Intramural Program.....	42
Organizations and Clubs.....	43
Social Organizations .....	43
Honorary and Academic Organizations.....	43
Religious Organizations.....	43
Service Organizations.....	44
Campus Life Organizations .....	44
Special Interest Organizations .....	44
<b>ADMINISTRATION, FACULTY AND STAFF.....</b>	<b>45</b>
2010-11 Stetson University Organizational Chart.....	45
2010-11 Academic Organizational Chart .....	46
Faculty .....	47
Full-time Faculty - by Rank, Gender, Ethnicity (DeLand Campus, 1999-2009) .....	47
Percent of Full-Time teaching Faculty with Terminal Degrees, DeLand - Historical .....	48
Full-time Faculty By School and Gender (Fall 2010) .....	48
Full-Time Instructional Faculty by Gender - Historical .....	49
Student-Faculty Ratio .....	50
Staff.....	50
Presidents of Stetson University .....	51
Board of Trustees (2010-2011).....	51
Trustees Emeriti.....	52
Academic and Administrative Officers .....	52
Academic Departments / Programs (2010-11) .....	53

# INTRODUCTION

Dear Stetson Community:

Much of the planning and evaluation necessary to improve the effectiveness of the University begins with an understanding of basic institutional facts. The *Stetson University Fact Book* is prepared annually by the Institutional Research Office to provide a better understanding of a variety of issues at Stetson. By sharing and discussing this information, members of the Stetson community are able to more effectively contribute to the planning processes of the University. As you use this information, please let us know how future editions can be improved.

Dr. John M. Tichenor  
Director of Institutional Research



# GENERAL INFORMATION

## Statement of Institutional Purpose Approved by the Board of Trustees, February 4, 2000

### I. Educational Mission

Our mission at Stetson University is to provide an excellent education in a creative community where learning and values meet, and to foster in students the qualities of mind and heart that will prepare them to reach their full potential as informed citizens of local communities and the world.

At Stetson, the art of teaching is practiced through programs solidly grounded in a tradition of liberal learning that stimulates critical thinking, imaginative inquiry, creative expression, and lively intellectual debate. The art of learning is enhanced through small interactive classes, close student-faculty alliances, and collaborative approaches that provide the foundation for rewarding careers and advanced study in selective graduate and professional programs. We embrace diverse methodologies to foster effective communication, information and technological literacy, and aesthetic appreciation. We encourage the development of informed convictions, independent judgment, and lifelong commitments to learning that are characteristic features of the enlightened citizen. In bringing together learning and values, the University encourages all of its members to demonstrate personal integrity; to develop an appreciation for the spiritual dimension of life; to embrace leadership in an increasingly complex, interdependent, and technological world; and to commit to active forms of social responsibility.

### II. Values and Vision

From its founding, Stetson University has affirmed the importance of spiritual life and the quest for truth in its educational mission. The University motto, *Pro Deo et Veritate* (“For God and Truth”), is a symbol of this commitment, and it expresses our determination to integrate the pursuit of a liberal education with the search for meaning in our lives and in our communities.

Chartered as an independent and comprehensive university, Stetson has had an historical relationship with the Christian community and the Baptist denominations. That relationship has shaped our commitment to build an inclusive community. Today, the University includes persons from diverse religious, ethnic, cultural, economic, and intellectual backgrounds. It is thus from varying perspectives that members of the University community have joined together to affirm collectively

- the centrality of knowledge, examined ideas, and independent judgment in the life of an educated person;
- the inherent dignity, worth, and equality of all persons;
- the importance of community in human life;
- the role of religious and spiritual quests for meaning in human experience;
- the value of diverse persons and differing ideas in an educational community;
- the responsibility we share to work toward social justice;
- the necessity for decisions to be guided by ethics and social responsibility; and
- the obligation of individuals and communities to act as responsible stewards of the natural environment.

In our curriculum and co-curricular activities, then, we aim to infuse traditional liberal education with the values of religious and spiritual life, ethical decision-making, human diversity and commonality, gender equity, community service, and environmental responsibility. We aspire to develop distinctive, innovative, and interdisciplinary undergraduate and graduate programs that are centered on vigorous intellectual inquiry, informed by these values, increasingly global in perspective, and worthy of local and national recognition.

### **III. Heritage and Character**

Florida's first private university, Stetson University was founded in 1883 by Henry A. DeLand, a New York philanthropist, as DeLand Academy. In 1887, the Legislature of the State of Florida enacted the Charter of DeLand University as an independent institution of higher learning. The university's name was changed in 1889 to honor John B. Stetson, the nationally-known hat manufacturer who gave generously of his time and means to advance the quality and reputation of the institution, and who served, with Mr. DeLand and others, as a founding trustee of the University. The first charter stated that the objective of the University should be "to promote the general interests of education, and to qualify its students to engage in the learned professions or other employments of society, and to discharge honorably and usefully the various duties of life." Stetson's first president, Dr. John F. Forbes, clearly described the commitment to teaching that has been a hallmark of the University throughout its history:

Buildings, libraries and apparatus are good and give added power, but the vital contact of students with a vigorous and stimulating mind and heart--this is the sine qua non of a successful education...The most important thing is to find men and women of large heart and mind, apt to teach and full of enthusiasm and stimulating power...to develop in the student the habit of independent judgment--of investigating statements and principles for oneself, and thus for oneself discover their truth or falsity.

Today, Stetson University is a non-sectarian, comprehensive, private university composed of individually strong undergraduate programs in various colleges and schools, and a selected group of academically distinctive graduate, professional, and continuing education programs. We seek academically talented individuals with leadership potential and records of personal growth and community service. We promote and support scholarly and creative activity among students, faculty, and staff as a means to enhance learning, teaching, and professional development, and as a contribution to the broader base of knowledge.

## **Accreditation**

- ◆ Accredited by the Commission on Colleges of the Southern Association of Colleges and Schools (1866 Southern Lane, Decatur, Georgia 30033-4097, Telephone (404) 679-4501) to award the Bachelor's, Master's and Specialist in Education degrees in the College of Arts and Sciences; Bachelor's degrees in the School of Music; Bachelor's and Master's degrees in the School of Business Administration; and the Juris Doctor and the Master of Laws degree in the College of Law.
  
- ◆ AACSB International – The Association to Advance Collegiate Schools of Business
- ◆ American Bar Association
- ◆ American Chemical Society
- ◆ Council for Accreditation of Counseling and Related Educational Programs
- ◆ National Association of Schools of Music
- ◆ National Council for Accreditation of Teacher Education



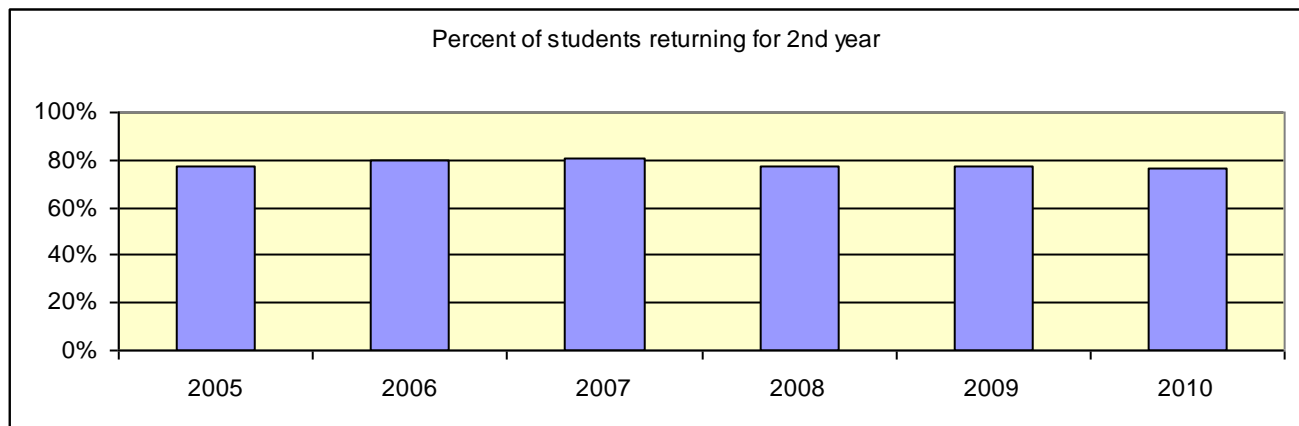
## KEY INDICATORS

### Student Retention Analysis

In the Fall of 2009, Stetson enrolled 502 new, full-time first-time-in-college students and 84 new transfer students. Nearly seventy-seven percent of the new, first-time-in-college students re-enrolled for classes in the Fall of 2010 and 88.1% of the transfer students re-enrolled. The tables and graphs on this page describe longitudinal retention rates and characteristics of returners & non-returners.

#### Percent of New (first-time-in-college) Students Returning for Second Year

Fall 2004 cohort returning in 2005	Fall 2005 cohort returning in 2006	Fall 2006 cohort returning in 2007	Fall 2007 cohort returning in 2008	Fall 2008 cohort returning in 2009	Fall 2009 cohort returning in 2010
77%	80%	81%	77%	77%	77%



#### Characteristics of Returning Students

		% of First Year Students Fall '09 Returning in Fall 2010			% of New Transfers Fall '09 Returning in Fall 2010		
		Initial cohort*	# returning	%	Initial cohort	# returning	%
<b>TOTAL</b>		502	384	76.5%	84	74	88.1%
<b>Gender</b>	Female	273	204	74.7%	48	40	83.3%
	Male	229	180	78.6%	36	34	94.4%
<b>Race</b>	International	15	13	86.7%	6	5	83.3%
	African American	38	26	68.4%	1	0	.0%
	Latino/a	64	42	65.6%	8	8	100.0%
	Asian American	6	4	66.7%			
	Native American	1	0	.0%	4	3	75.0%
	White	350	279	79.7%	56	49	87.5%
	Unknown, Other	28	20	71.4%	9	9	100.0%
<b>School</b>	Arts & Sciences	297	217	73.1%	45	41	91.1%
	Business	95	75	78.9%	23	20	87.0%
	Music	48	43	89.6%	13	12	92.3%
	Discovery	62	49	79.0%	3	1	33.3%

\*This is the cohort used for IPEDS and other reports.

## Retention Analysis, continued

### Cumulative GPA (end of Spring 2010) of Fall 2009 new students

	Returners			Non-Returners		
	Mean	Median	Std. Dev.	Mean	Median	Std. Dev.
First Year	2.94	3.00	.6437	2.27	2.29	.9458
Transfers	3.10	3.24	.5885	2.75	2.63	.7479

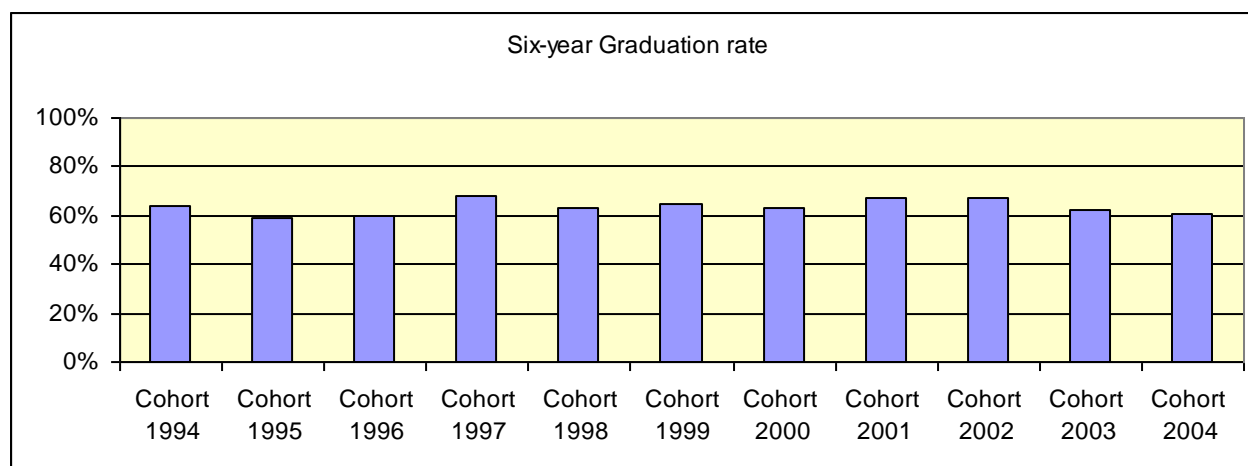
### Average SAT of Fall 2009 new students

	Returners			Non-Returners		
	Mean	Median	Std. Dev.	Mean	Median	Std. Dev.
First Year	1126	1110	136.732	1086	1070	130.926
Transfers	1073	1095	143.885	918	970	196.901

### Average HS GPA of Fall 2009 new students

	Returners			Non-Returners		
	Mean	Median	Std. Dev.	Mean	Median	Std. Dev.
First Year	3.79	3.78	.5487	3.64	3.61	.5850
Transfers	3.39	3.40	.6190	3.24	3.15	.3770

Graduation Rates	First Year	4-year	5-year	6-year
	Students			
Cohort: 1994	474	54%	62%	64%
Cohort: 1995	464	49%	57%	59%
Cohort: 1996	416	51%	60%	60%
Cohort: 1997	504	56%	66%	68%
Cohort: 1998	539	52%	62%	63%
Cohort: 1999	548	57%	64%	65%
Cohort: 2000	502	53%	61%	63%
Cohort: 2001	527	55%	66%	67%
Cohort: 2002	542	55%	65%	67%
Cohort: 2003	523	50%	61%	62%
Cohort: 2004	598	51%	59%	61%
Cohort: 2005	548	56%	63%	



## Tuition and Fees

### Stetson - Historical

Year	Tuition	Undergraduate		Per Credit Hour Fees	
		Fees	Total	U-Grad	Graduate
1988 - 1989	\$7,370	\$305	\$7,675		\$170
1989 - 1990	\$8,100	\$340	\$8,440		\$185
1990 - 1991	\$8,900	\$385	\$9,285		\$200
1991 - 1992	\$9,610	\$410	\$10,020	\$320	\$215
1992 - 1993	\$10,660	\$450	\$11,110	\$355	\$235
1993 - 1994	\$11,510	\$485	\$11,995	\$385	\$255
1994 - 1995	\$12,315	\$555	\$12,870	\$410	\$275
1995 - 1996	\$13,110	\$590	\$13,700	\$440	\$295
1996 - 1997	\$14,100	\$635	\$14,735	\$470	\$315
1997 - 1998	\$15,100	\$665	\$15,765	\$500	\$350
1998 - 1999	\$15,850	\$800	\$16,650	\$525	\$370
1999 - 2000	\$16,640	\$870	\$17,510	\$550	\$390
2000 - 2001	\$17,475	\$910	\$18,385	\$580	\$410
2001 - 2002	\$18,350	\$960	\$19,310	\$610	\$430
*2002 - 2003	\$19,950	\$1275	\$21,225	\$650	\$430
*2003 - 2004	\$21,300	\$1340	\$22,640	\$685	\$450**
*2004 - 2005	\$22,730	\$1405	\$24,135	\$725	\$475**
*2005 - 2006	\$23,975	\$1475	\$25,450	\$760	\$500**
*2006 - 2007	\$25,450	\$1560	\$27,010	\$795	\$525**
2007 - 2008	\$27,100	\$1680	\$28,780	\$825	\$550-\$575**
2008 - 2009	\$28,456	\$1760	\$30,216	\$870	\$575-600**
2009 - 2010	\$29,880	\$1890	\$31,770	\$914	\$610-625**
2010 - 2011	\$31,374	\$2050	\$33,424	\$960	\$640-725

\*New Students

\*\*DeLand campus, Celebration Education majors

### 2010-11 Graduate tuition - per credit hour

DeLand Campus – A & S Graduate programs	\$ 640
DeLand Campus – Business programs	\$ 725
Celebration Campus: Teacher Education	\$ 640
Counselor Education	\$ 640
Business Administration	\$ 725
Executive	\$1,100
Law School: JD/MBA (includes books)	\$ 750

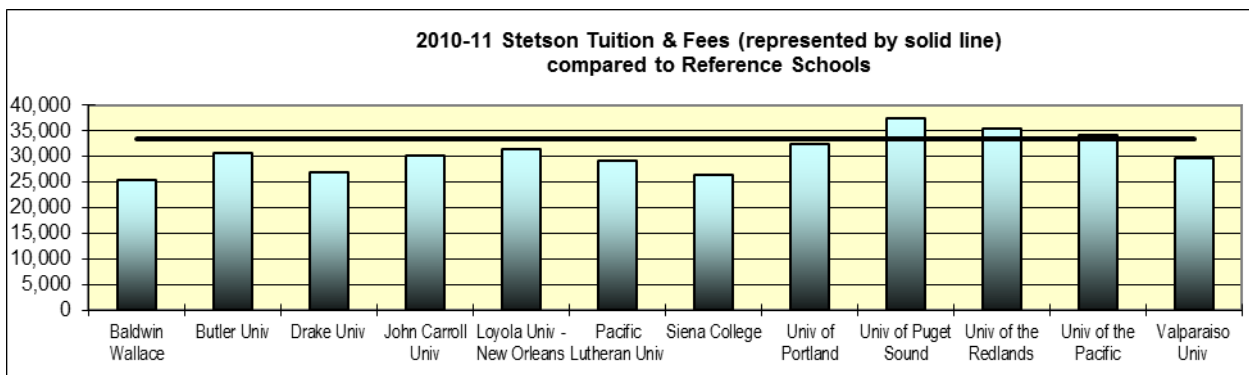
## 2010 - 11 Peer Schools Comparison - Tuition and Fees

Baldwin Wallace College	25,260	Siena College	26,495
Butler University	30,558	University of Portland	32,450
Drake University	26,960	University of Puget Sound	37,390
John Carroll University	30,250	University of the Redlands	35,540
Loyola University – New Orleans	31,504	University of the Pacific	34,100
Pacific Lutheran University	29,200	Valparaiso University	29,582
		Stetson University	33,424

### Other Regional Schools

Elon University	26,827	Samford University	21,942
Furman University	38,088	University of Tampa	23,218
Rollins College	37,640		

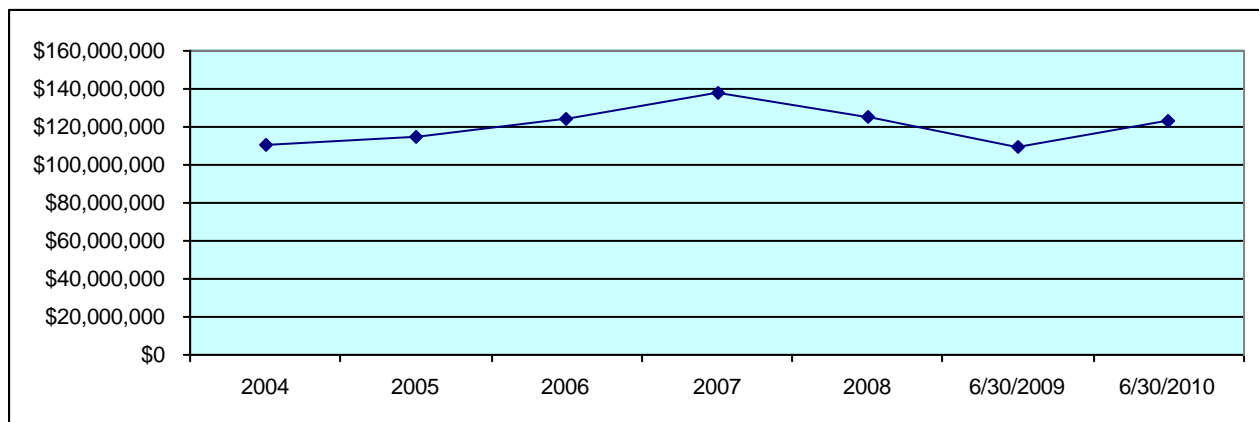
Source: US News



## Financial Information

### Endowment - Market Value

5/31/04	5/31/05	5/31/06	5/31/07	6/30/08	6/30/09	6/30/10
111,045,000	114,753,000	124,428,000	137,557,000	125,079,000	109,840,000	122,971,000



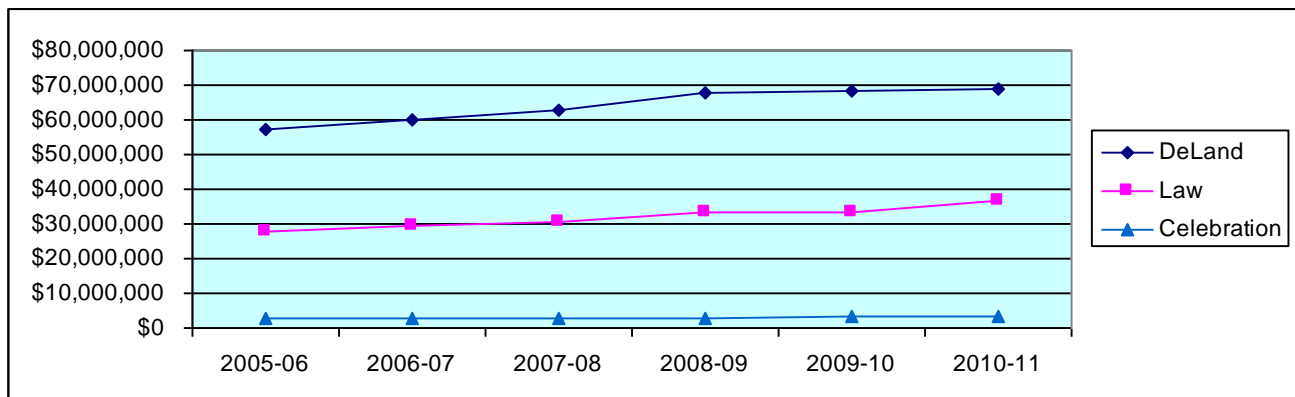
## Endowment - Peer Schools

School	Market Value End FY09	National Rank in Endowment Assets
Loyola University – New Orleans	231,509,000	227th
University of Puget Sound	217,691,000	233rd
University of the Pacific	181,077,000	254th
John Carroll University	147,101,000	293rd
Valparaiso University	140,406,000	305th
Drake University	135,009,000	311st
Butler University	128,486,000	320th
<b>Stetson University</b>	<b>122,971,000</b>	<b>330rd</b>
Baldwin Wallace College	103,946,000	356th
University of the Redlands	94,237,000	380th
University of Portland	79,989,000	412th
Pacific Lutheran University	67,144,000	453rd
Siena College	Did not participate	
<b>Other Regional Schools</b>		
Elon University	100,875,000	365th
Furman University	498,282,000	129th
Rollins College	279,852,000	198th
Samford University	Did not participate	
University of Tampa	Did not participate	

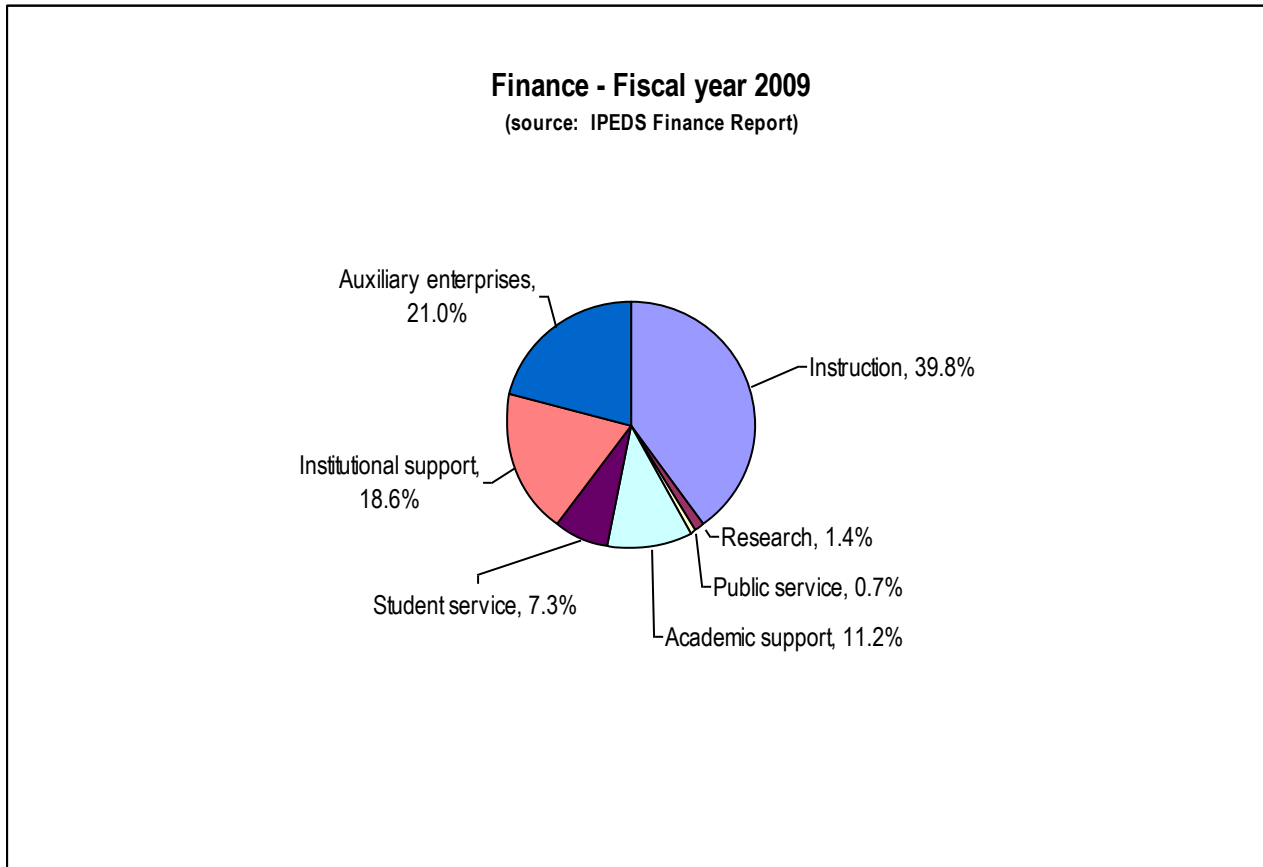
Source: 2010 NACUBO Endowment Study

## Annual Budget

	2005-06	2006-07	2007-08	2008-09	2009-10	2010-11
DeLand	\$57,236,000	\$60,099,000	\$62,737,000	\$67,545,000	\$68,560,000	\$68,841,000
Law	\$27,576,000	\$29,625,000	\$30,804,000	\$33,143,000	\$33,506,000	\$36,625,000
Celebration	\$2,691,000	\$2,891,000	\$2,951,000	\$2,874,000	\$3,195,000	\$3,369,000



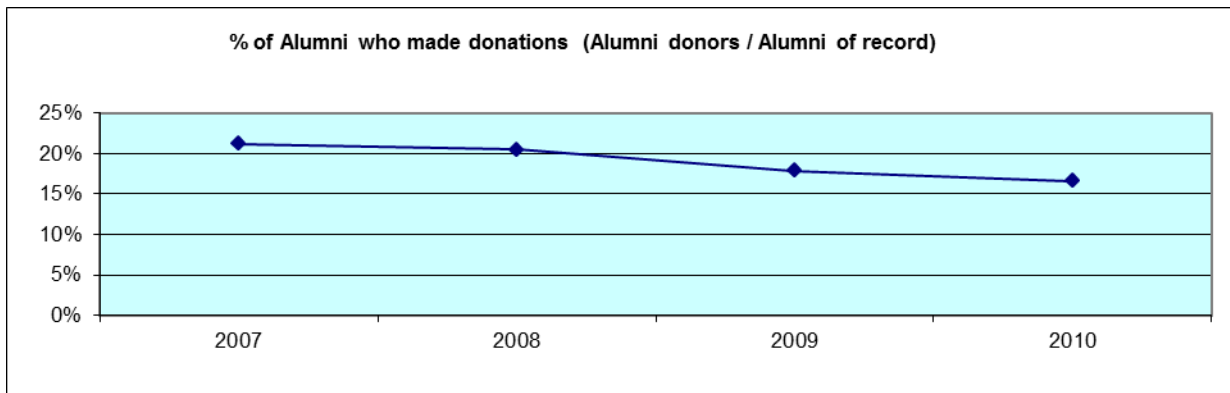
## Expenses



## Alumni Giving Profile - Undergraduate

	2007	2008	2009	2010
Alumni of record	10,147	10,748	11,570	11,859
Alumni solicited	9,574	9,900	10,981	11,240
Alumni donors	2,155	2,208	2,066	1,970
Giving percent of record	21.2%	20.5%	17.9%	16.6%

Source: CAE Report

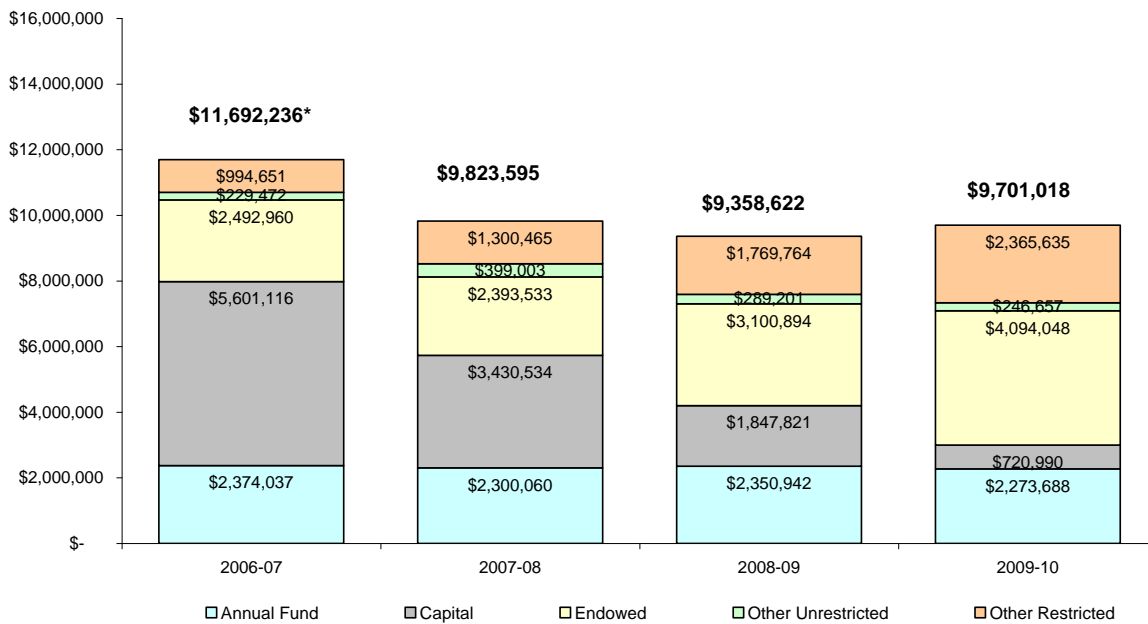


# Fundraising Report

## GIFTS RECEIVED

Fiscal Year 2009-10

Annual Fund	\$ 2,273,688
Capital	720,990
Endowed	4,094,048
Other Restricted	2,365,635
Other Unrestricted	246,657
<b>TOTAL</b>	<b>\$ 9,701,018</b>



\*Includes large bequest gifts

## Student Financial Aid

### Scholarships/Grants - Undergraduates

	2009-10		2010-11	
	Scholarships & Grants		Scholarships & Grants	
	Total	Average	Total	Average
Institutional	\$28,654,601	\$14,560	\$32,147,038	\$16,469
Federal Need-based	\$3,504,456	\$5,072	\$4,064,290	\$5,327
Federal Non-need-based	\$33,000	\$1,500	\$4,000	\$4,000
Florida Merit	\$3,241,559	\$2,780	\$3,367,242	\$3,228
Florida Need-based	\$822,257	\$1,772	\$571,627	\$1,508
Florida Non-need-based	\$3,796,506	\$2,339	\$3,778,665	\$2,425
External	\$731,109	\$4,485	\$848,013	\$5,267
<b>TOTAL Scholarships/Grants</b>	<b>\$40,783,488</b>	<b>\$19,674</b>	<b>\$44,800,987</b>	<b>\$22,080</b>

### Total Aid and Self-Help\* (2010-2011)

	First Year Students	Full-time Undergrads
Total financial aid	\$18,623,733	\$64,535,382
Average financial aid package	\$34,109	\$31,101
Total Self-help	\$3,324,283	\$14,121,557
Average self-help	\$8,249	\$9,779

\*Self help includes work-study and loans, excludes PLUS loans.



# ACADEMIC PROGRAMS

## Degrees and Programs Offered (2010-11)

### College of Arts and Sciences

American Studies	B.A.	International Studies	B.A.
Aquatic & Marine Biology*	B.S.	Mathematics	B.S.
Art	B.A.	Modern Languages	
Biology	B.S.	French	B.A.
Biochemistry*	B.S.	German	B.A.
Chemistry	B.S.	Spanish	B.A.
Communication Studies	B.A.	Molecular Biology*	B.S.
Computer Information Systems*	B.A.	Music	B.A.
Computer Science	B.S.	Philosophy	B.A.
Digital Arts	B.A.	Physics	B.S.
Economics	B.A., B.S.	Political Science	B.A.
Elementary Education*	B.A.	Psychology	B.A.
English	B.A.	Religious Studies	B.A.
Environmental Science	B.A., B.S.	Russian Studies	B.A.
Geography	B.S.	Social Science*	B.A.
History	B.A.	Sociology	B.A.
Humanities	B.A.	Sport Management	B.A.
Integrative Health Science	B.S.	Theatre Arts	B.A.

\* Minor NOT available

### Minors only

Africana Studies	Education	Latin American Studies
Anthropology	Creative Writing	Russian
Art History	Journalism	Studio Art
		Women and Gender Studies

### Cooperative Programs

Pre-Engineering	Marine Science	Pre-Med
Forestry and Environmental Studies	Pre-Law	

### School of Business Administration

Accounting/Accounting Information Systems	B.B.A.	Finance	B.B.A.
Business Administration	B.B.A.	International Business*	B.B.A.
Economics*	B.B.A.	Management	B.B.A.
Family Enterprise	B.B.A.	Management Information Systems	B.B.A.
		Marketing	B.B.A.

\* Minor NOT available

### Minors only

Applied Statistics	Business Law	Entrepreneurship
--------------------	--------------	------------------

## School of Music

B.A. Music  
B.A. Digital Arts - Sound Track

B.M.E. Instrumental/General  
B.M.E. Vocal/General

B.M. Performance  
Guitar  
Orchestral Instrument  
Organ  
Piano  
Voice

B.M. Music Technology  
B.M. Theory and Composition  
B.M. Elective Studies in a Specific Outside Field  
B.M. Elective Studies in Business

## Minors

General Music  
(must be added to a non-music degree)

Church Music  
(must be added to a music degree)

## Graduate

Curriculum & Instruction	Ed.S	Reading Education	M.Ed.
Educational Leadership	M.Ed.	School Counseling	M.S.
English	M.A.	Executive Master of Business Administration	M.B.A.
Marriage, Couple, & Family Counseling	M.S.	Master of Accountancy	M.Acc.
Clinical Mental Health Counseling	M.S.	Master of Business Administration	M.B.A.

## Enrollment by Major - Undergraduate (Fall 2010)

### Includes Double Majors

#### College of Arts and Sciences

Major	Frequency	% of A&S Majors	Major	Frequency	% of A&S Majors
American Studies	6	0.5%	French	12	0.9%
Aquatic & Marine Biology	26	2.0%	Geography	14	1.1%
Art	34	2.6%	German	2	0.2%
Art Restoration	1	0.1%	Health Science	98	7.6%
Biochemistry	32	2.5%	History	55	4.3%
Biology	109	8.4%	Humanities	11	0.9%
Chemistry	29	2.2%	International Studies	23	1.8%
Communication Studies	54	4.2%	Latin American Studies	1	0.1%
Computer Information Systems	3	0.2%	Mathematics	13	1.0%
Computer Science	29	2.2%	Molecular Biology	8	0.6%
Digital Arts-Art Track	18	1.4%	Music	5	0.4%
Digital Arts-Computer Science	12	0.9%	Philosophy	21	1.6%
Digital Arts-Sound Track	22	1.7%	Physics	19	1.5%
Economics	6	0.5%	Political Science	111	8.6%
Education, Elementary	47	3.6%	Psychology	168	13.0%
Education, General Studies	1	0.1%	Rehabilitative Studies	3	0.2%
Education, Secondary (Biology)	1	0.1%	Religious Studies	32	2.5%
Education, Secondary (English)	5	0.4%	Russian Studies	15	1.2%
Education, Secondary (French)	1	0.1%	Social Science	10	0.8%
Education, Secondary (Math)	1	0.1%	Sociology	28	2.2%
Education, Secondary (Soc Sci)	4	0.3%	Spanish	16	1.2%
English	82	6.4%	Sport Management	55	4.3%
Environmental Science	32	2.5%	Theatre Arts	16	1.2%
			<b>Total A&amp;S Majors</b>	<b>1291</b>	

#### School of Business

Major	Frequency	% of Bus. Majors
Accounting	57	9.1%
Economics – BBA	7	1.1%
Family Enterprise	32	5.1%
Finance	127	20.4%
Business Admin	129	20.7%
Business Admin - Passport	38	6.1%
International Business	73	11.7%
Management	64	10.3%
Management Info Systems	22	3.5%
Marketing	74	11.9%
<b>Total Business Majors</b>	<b>623</b>	

#### School of Music

Major	Frequency	% of Mus. Majors
BM Outside Field-Business	17	7.6%
BM Outside Field	20	8.9%
Guitar	10	4.4%
Music Ed-Instrumental/Gen	44	19.6%
Music Education-Vocal	25	11.1%
Music Technology	5	2.2%
Orchestral Instrument	43	19.1%
Organ	2	0.9%
Piano	16	7.1%
Theory & Comp-Comp	10	4.4%
Theory & Comp:Theory	4	1.8%
Voice	29	12.9%
<b>Total Music Majors</b>	<b>225</b>	

Discovery/Gen Studies (Undeclared)	169
No Major Necessary, visiting, transient, etc.	10

## Enrollment by Minor - Undergraduate (Fall 2010)

Includes Double Minors

	School of Student's Major				School of Student's Major		
	A & S	Business	Music		A & S	Business	Music
Accounting	1	6	0	Health Care Issues	3	0	0
Africana Studies	3	0	0	Health Science	8	0	0
American Studies	4	0	0	History	20	0	1
Anthropology	10	0	0	Humanities	3	0	0
Applied Statistics	0	6	0	International Studies	5	1	0
Art	7	1	0	Journalism	26	0	0
Art History	14	1	0	Latin American Studies	2	0	0
Biology	9	0	0	Management	5	10	0
Business Law	12	19	0	Management Info Systems	2	22	0
Chemistry	3	0	0	Marketing	9	10	0
Communication Studies	6	7	0	Mathematics	11	2	0
Computer Science	0	0	0	Music	25	2	0
Digital Arts	11	5	1	Philosophy	13	2	0
Economics	4	3	0	Physics	1	0	0
Education	22	1	0	Political Science	6	5	0
English	10	0	2	Psychology	34	9	6
English – Creative Writing	14	1	0	Religious Studies	30	3	0
Environmental Science	3	0	0	Russian	5	1	1
Entrepreneurship	0	6	1	Russian Studies	2	0	0
Family Business	1	1	0	Sociology	7	1	0
Finance	3	7	0	Spanish	32	13	1
French	16	5	0	Sport Management	9	11	0
General Business Admin	28	0	1	Theatre Arts	3	0	0
Geography	0	0	0	Women & Gender Studies	13	0	0
German	4	4	1	<b>TOTALS</b>	<b>459</b>	<b>165</b>	<b>15</b>

## Enrollment by Major - Graduate (Fall 2010)

Major	#	%	Major	#	%
Educational Leadership	51	10.5%	Master of Business Admin - Exec	34	7.0%
English	12	2.5%	Master of Business Admin - MS	13	2.7%
Law (MBA/JD)	43	8.9%	Mental Health Counseling	30	6.2%
Marriage, Couple & Family CSL	30	6.2%	No Major Necessary*	40	8.2%
Master of Accountancy	15	3.1%	Reading Education	12	2.5%
Master of Accountancy - online	51	10.5%	School Counseling	17	3.5%
Master of Business Admin	137	28.2%	<b>TOTALS</b>	<b>485</b>	

\*25 Arts & Sciences, 15 Business

## Enrollment by Major - Undergraduate (Historical)

Includes Double Majors

<b>Arts &amp; Sciences</b>	<b>2003</b>	<b>2004</b>	<b>2005</b>	<b>2006</b>	<b>2007</b>	<b>2008</b>	<b>2009</b>	<b>2010</b>
American Studies	5	8	12	8	5	3	5	6
Aquatic & Marine Biology	16	20	19	23	20	23	21	26
Art	34	36	37	35	32	26	36	34
Art Restoration								1
Biochemistry	15	17	23	25	18	29	32	32
Biology	105	98	94	108	106	105	105	109
Biology - Molecular	3	6	8	8	12	9	9	8
Chemistry	12	16	12	16	13	17	23	29
Communication Studies	57	73	78	68	72	55	69	54
Computer Info Systems	2	3	3	2	3	2	5	3
Computer Science	18	13	24	18	27	24	28	29
Digital Arts	51	44	28	28	22	39	46	52
Economics	7	5	5	5	11	12	5	6
Education - Elementary	99	92	88	80	77	79	55	47
Education – General	17					1		1
Education - Secondary	21	15	21	12	19	15	11	12
English	83	97	90	94	78	73	88	82
Environmental Science	17	13	20	17	21	23	33	32
Foreign Language - French	8	6	7	10	9	9	11	12
Foreign Language - German	6	7	12	8	6	9	4	2
Foreign Language - Spanish	17	17	22	28	26	23	19	16
Geography	2			1	1	2	5	14
Health Care Administration							1	
History	42	39	36	42	37	35	47	55
Humanities	8	9	12	15	13	18	12	11
Integ Health - Health Science	35	47	45	53	55	55	83	98
Integ Health - Rehab Studies	18	17	19	23	21	18	11	3
International Studies	18	29	27	15	19	24	19	23
International Theatre					1			
Latin American Studies	3	2	3	2	1	4	2	1
Mathematics	15	19	31	22	23	22	18	13
Med Tech		1	2	2	2			
Music Lib. Arts	9	7	9	7		4	2	5
Philosophy	14	14	22	20	12	14	14	21
Physics	15	14	15	20	23	18	22	19
Political Science	113	106	116	131	117	116	118	111
Psychology	139	143	139	137	150	150	154	168
Religious Studies	28	34	33	20	28	26	20	32
Russian Studies	13	13	10	9	10	14	14	15
SES-Athletic Training	2							
SES-Exercise Science	3							
Social Science	1	7	8	4	5	5	4	10
Sociology	42	38	39	30	26	23	23	28
Sport Admin/Mgmt	42	48	46	44	51	40	47	55
Theatre Arts	17	21	22	26	18	13	15	16
<b>Total</b>	<b>1172</b>	<b>1194</b>	<b>1237</b>	<b>1216</b>	<b>1190</b>	<b>1177</b>	<b>1236</b>	<b>1291</b>

## Enrollment by Major - Undergraduate (Historical), continued

<b>Business</b>	<b>2003</b>	<b>2004</b>	<b>2005</b>	<b>2006</b>	<b>2007</b>	<b>2008</b>	<b>2009</b>	<b>2010</b>
Accounting							11	57
Accounting Info Systems	59	60	75	80	69	63	50	
Business Economics	14	9	7	6	2	4	14	7
Computer Info Systems	4							
Electronic Business Tech	37	37	24	14	11	5		
Family Business / Enterprise		5	19	18	24	27	32	32
Finance	107	93	91	103	155	164	147	127
General Business	216	199	217	241	214	221	207	167
International Business	63	65	82	80	101	96	87	73
Management	81	89	88	79	67	58	60	64
Management Info Systems					14	13	18	22
Marketing	107	110	99	111	101	88	85	74
<b>Total</b>	<b>688</b>	<b>667</b>	<b>702</b>	<b>732</b>	<b>758</b>	<b>739</b>	<b>711</b>	<b>623</b>

<b>Music</b>	<b>2003</b>	<b>2004</b>	<b>2005</b>	<b>2006</b>	<b>2007</b>	<b>2008</b>	<b>2009</b>	<b>2010</b>
Bach of Music w/Bus Adm	15	5	7	14	19	19	15	17
Bach of Music w/outside Field	19	27	23	17	19	20	20	20
Bachelor of Music w/Dig Arts	4	3	2	5	1			
Music Lib. Arts (See A & S)								
Music Education	70	79	80	85	73	74	69	69
Music Technology					5	5	6	5
Musical Theater		1	1					
Performance:								
Guitar	7	8	8	6	9	8	10	10
Orchestral Instrument	26	24	30	28	39	43	51	43
Piano/Organ	17	17	10	13	13			
Organ						4	3	2
Piano						15	18	16
Voice	34	26	30	31	36	42	36	29
Theory & Composition	9	10	11	12	14	17	12	14
<b>Total</b>	<b>201</b>	<b>200</b>	<b>202</b>	<b>211</b>	<b>228</b>	<b>247</b>	<b>240</b>	<b>225</b>

No major necessary, visiting transient		12	4	12	8	9	4	10
Discovery	193	226	287	233	244	235	155	169

## Degrees Awarded by Major - Undergraduate (Historical)

(includes second majors)

Arts & Sciences	7/1/03 to 6/30/04	7/1/04 to 6/30/05	7/1/05 to 6/30/06	7/1/06 to 6/30/07	7/1/07 to 6/30/08	7/1/08 to 6/30/09	7/1/09 to 6/30/10
American Studies		3	2	3	2	4	1
Art	5	7	9	11	9	4	6
Biology	26	25	21	17	21	16	28
Biology, Aquatic		4	1	2	3	3	2
Biology, Molecular	1	3	2		2	3	3
Bio-Chemistry	1	3	4	5	4	3	3
Chemistry	2	1	2	2	2	3	3
Communications	16	19	12	21	24	11	23
Computer Information Systems			1		1	2	
Computer Science	6	1	3	3	3	3	3
Digital Arts	11	15	8	5	7	4	9
Economics	2	2	1	1	3	4	
English	20	21	21	24	28	18	22
Environmental Science / Studies	7	3	6	3	5	5	7
Modern Language: French	2	3	1	2	1	3	5
Modern Language: German		1	3	3	3	4	3
Modern Language: Spanish	5	12	3	9	6	7	5
Geography	2					3	3
Health Sciences	3	17	10	11	24	14	23
History	8	10	17	10	11	9	10
Humanities	3	1	1	6	7	6	7
International Studies/Sciences	2	6	7	4	4	7	3
Latin American Studies	1	1		1	1	1	1
Mathematics	4	2	6	3	3	6	2
Medical Technology							1
Music – Liberal Arts		4		5	1		2
Philosophy	4	6	6	8	5	7	2
Physics	5	2	2	2	7	7	2
Political Science	24	18	21	26	28	22	29
Psychology	34	27	39	29	28	42	38
Religious Studies	6	12	12	8	9	10	6
Russian Studies	2	6	4	2	2	6	4
Self-defined Majors	1				1		2
SES: Athletic Trng, Sports Med	2						
SES: Ex Sci & Rehab. Studies	3	5	5	4		1	4
Sport Management	10	6	17	10	8	9	11
Social Sciences	4	2	3	1	4	1	1
Sociology	13	8	15	9	8	7	7
Teacher Educ – Elem	28	21	27	15	21	26	17
Teacher Educ - Secondary					2	4	1
Teacher Educ – General		1	1			2	
Theatre Arts	3	5	5	8	4	2	
<b>Total</b>	<b>266</b>	<b>283</b>	<b>298</b>	<b>273</b>	<b>302</b>	<b>289</b>	<b>299</b>

**Degrees Awarded by Major - Undergraduate (Historical), continued**

<b>Business</b>	<b>7/1/03 to 6/30/04</b>	<b>7/1/04 to 6/30/05</b>	<b>7/1/05 to 6/30/06</b>	<b>7/1/06 to 6/30/07</b>	<b>7/1/07 to 6/30/08</b>	<b>7/1/08 to 6/30/09</b>	<b>7/1/09 to 6/30/10</b>
Accounting	20	16	14	21	21	22	20
Business Administration	36	33	35	43	65	47	51
Business Economics	4	3	3			2	2
Electronic Business Tech	14	15	7	4	6	1	1
Family Business			5	2	3	6	12
Finance	36	32	30	25	43	49	61
Information Resources (CIS)	3						
International Business	15	9	14	13	17	10	15
Management	26	28	22	31	18	14	28
Management Info Systems					2	10	4
Marketing	26	39	28	29	31	35	27
<b>Total Business</b>	<b>180</b>	<b>175</b>	<b>158</b>	<b>168</b>	<b>206</b>	<b>196</b>	<b>221</b>

<b>Music</b>							
Music Perf – Piano & Organ	3	3	2	6	3	2	5
Music Perf – Orch Instrument	2	4	4	8	3	6	9
Music Perf – Viola, Guitar	1	1	2	1	1	2	
Music Perf – Voice	6	4	1	7	3	5	7
Music – Other	9	12	16	6	16		
BM w/ Outside Field						7	15
Music Technology						1	1
Music Theory & Composition	2	1	6	1	1	3	
Teacher Educ – Music	10	5	10	27	5	5	12
<b>Total Music</b>	<b>33</b>	<b>30</b>	<b>41</b>	<b>56</b>	<b>32</b>	<b>31</b>	<b>49</b>

<b>TOTAL</b>	<b>479</b>	<b>488</b>	<b>497</b>	<b>497</b>	<b>540</b>	<b>516</b>	<b>569</b>
--------------	------------	------------	------------	------------	------------	------------	------------

**Degrees Awarded - by Degree Type (Historical)**

	<b>2003-04</b>	<b>2004-05</b>	<b>2005-06</b>	<b>2006-07</b>	<b>2007-08</b>	<b>2008-09</b>	<b>2009-10</b>
<b>BACHELORS</b>	<b>479</b>	<b>488</b>	<b>497</b>	<b>497</b>	<b>540</b>	<b>516</b>	<b>569</b>
Arts & Sciences	266	283	298	274	302	289	299
Business	180	175	158	168	206	196	221
Music	33	30	41	55	32	31	49
<b>MASTERS</b>	<b>182</b>	<b>181</b>	<b>223</b>	<b>190</b>	<b>241</b>	<b>239</b>	<b>243</b>
Arts & Sciences	78	76	96	74	99	114	85
Business	104	105	127	116	142	125	158
<b>LAW</b>	<b>284</b>	<b>254</b>	<b>304</b>	<b>362</b>	<b>313</b>	<b>333</b>	<b>377</b>



## College of Law

### Law School Tuition – Full-time

2003-04	2004-05	2005-06	2006-07	2007-08	2008-09	2009-10	2010-11
\$23,924	\$24,760	\$26,100	\$27,660	\$29,040	\$31,040	\$31,420	\$33,000

### Law School Tuition – Full-time Summer Session

2003	2004	2005	2006	2007	2008	2009	2010
\$5,980	\$6,200	\$6,550	\$6,950	7,298	\$7,660	7,890	\$8,540

### Law School Key Facts

- Ranked No. 1 for trial advocacy and No. 3 for legal writing by *U.S. News & World Report*
- Individual attention to student needs
- Talented, dedicated faculty who excel in their fields
- State-of-the-art library and classrooms
- Seven courtrooms
- J.D. Certificates of Concentration in Advocacy, Elder Law and International Law
- J.D./M.B.A. Certificate of Concentration in Eco-Asset Management
- J.D./M.B.A., J.D./M.D. and J.D./M.P.H., J.D./Grado dual-degree programs
- LL.M. degrees in both International Law and Elder Law
- One of few U.S. law schools to share space with a working court, Florida’s Second District Court of Appeal
- The first law school in Florida to require pro bono service by students and faculty
- Excellent career development services
- Centers for Excellence in Advocacy, Elder Law, Higher Education Law and Policy, and International Law
- Home to the National Clearinghouse for Science, Technology and the Law, and Institutes for Biodiversity Law and Policy and Caribbean Law and Policy
- Home to three academic journals, including the *Stetson Law Review*
- Honors program for top-ranked students
- National and world champion advocacy teams
- Wide variety of clinic and internship opportunities
- Vibrant campus life with diverse student organizations, interscholastic activities and competitions
- Study-abroad programs in Argentina, Cayman Islands, China, France, Great Britain, Mexico, the Netherlands, Spain and Switzerland
- Campuses in beautiful Gulfport and Tampa, Florida

For more information on the College of Law, visit [www.law.stetson.edu](http://www.law.stetson.edu).

# STUDENT INFORMATION

## SAT / ACT Scores

Fall 2010 First Year Students

	75th Percentile	25th Percentile	Average
SAT Math	610	480	545
SAT Reading	620	490	553
SAT Total	1220	1000	1114
ACT Math	25	19	22.4
ACT English	27	20	23.3
ACT Composite	26	20.8	23.3
High School GPA*	4.04	3.39	3.73

84% submitted SAT scores  
 64% submitted ACT scores  
 95% submitted High School GPA

\*weighted

## Range of SAT / ACT Scores

Fall 2010 First Year Students

<u>SAT</u>			<u>ACT</u>			
	Reading	Math	Composite	English	Math	
700 - 800	5.9%	4.1%	30 - 36	5.7%	12.7%	5.5%
600 - 699	25.6%	25.8%	24 - 29	37.7%	31.1%	36.6%
500 - 599	41.7%	39.1%	18 - 23	52.0%	45.0%	43.2%
400 - 499	24.2%	27.9%	12 - 17	4.6%	10.7%	14.7%
Under 400	2.6%	3.1%	6 - 11	--	.6%	--

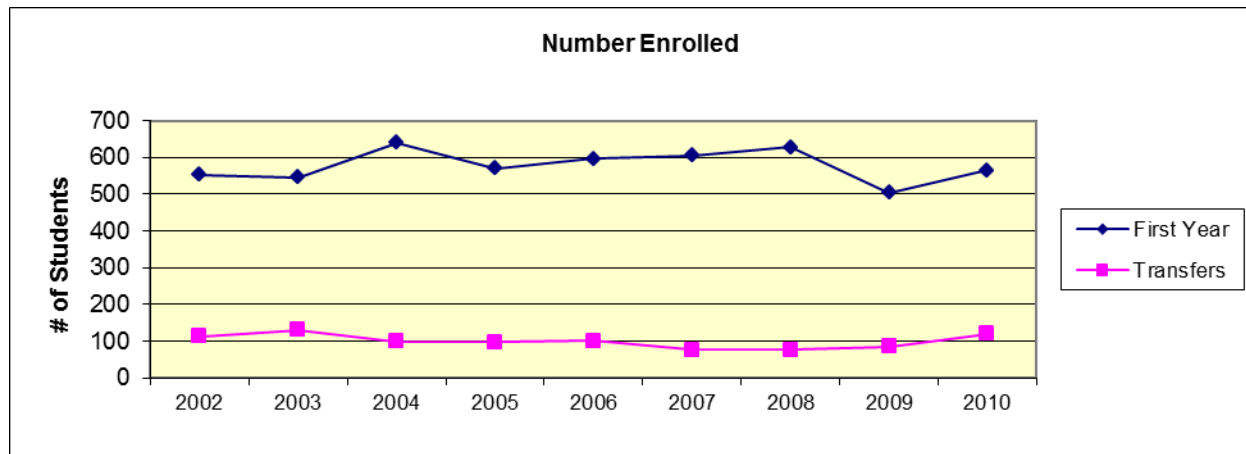
## First Year & Transfer Students

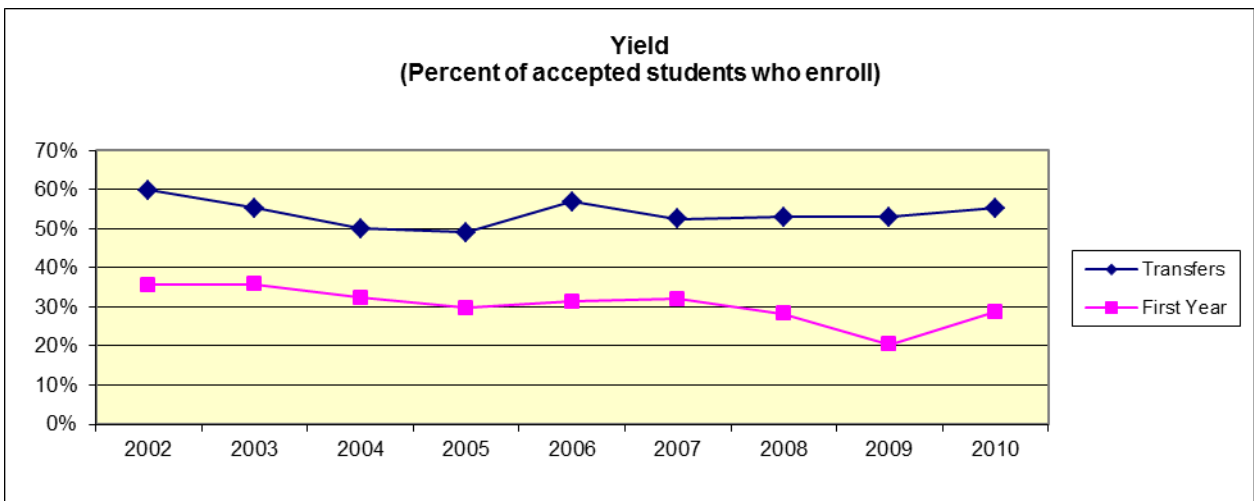
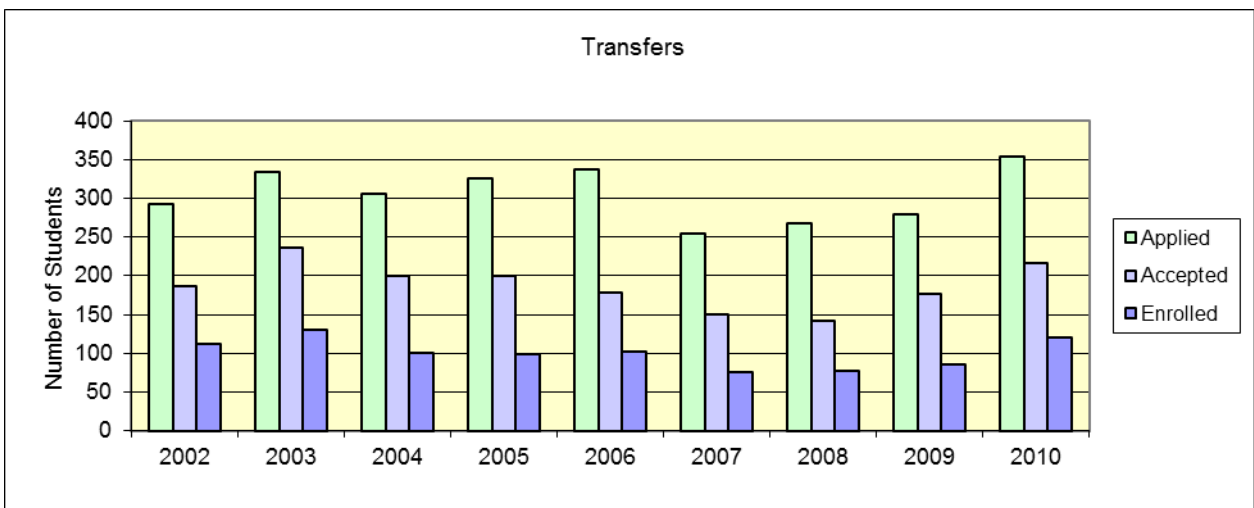
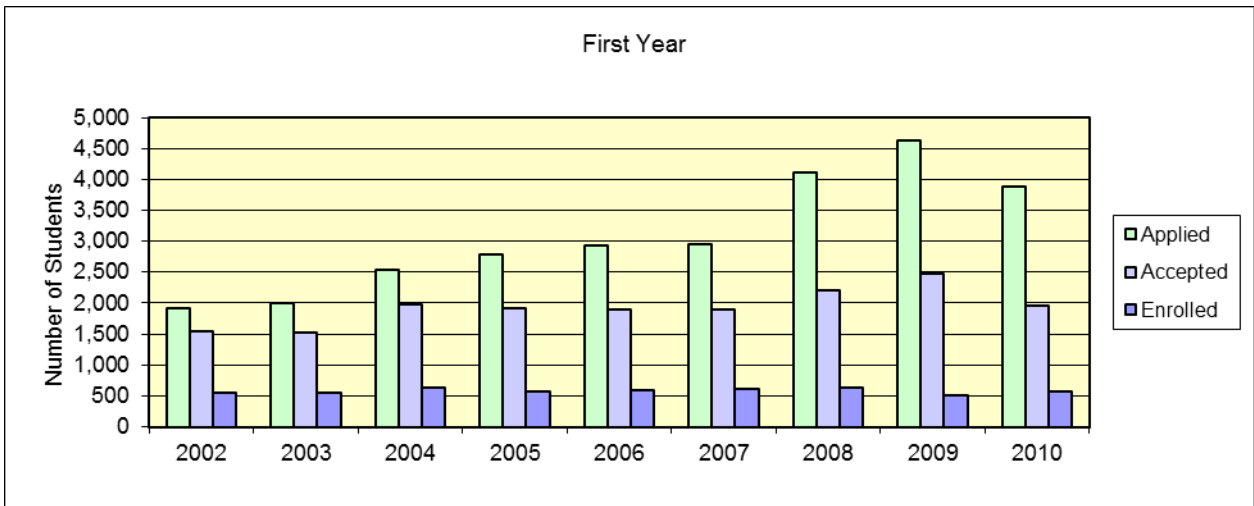
(Source: Admission's Office "Entering Class Profile")\*

<b>First Year</b>	<b>2002</b>	<b>2003</b>	<b>2004</b>	<b>2005</b>	<b>2006</b>	<b>2007</b>	<b>2008</b>	<b>2009</b>	<b>2010</b>
Inquired**	26,776	34,558	30,530	27,630	26,778	31,013	42,464	46,822	45,338
Applied	1,918	1,992	2,540	2,782	2,931	2,947	4,119	4,640	3,884
Accepted	1,538	1,527	1,980	1,918	1,902	1,890	2,216	2,479	1,962
Enrolled									
Men	225	244	262	246	240	256	261	230	222
Women	328	302	379	325	357	350	367	275	343
<b>TOTAL</b>	<b>553</b>	<b>546</b>	<b>641</b>	<b>571</b>	<b>597</b>	<b>606</b>	<b>628</b>	<b>505</b>	<b>565</b>
Yield rate for accepted students	36.0%	35.8%	32.4%	29.8%	31.4%	32.1%	28.3%	20.4%	28.8%
<b>Transfers</b>									
Inquired	1,924	1,421	1,024	1,029	673	591	1,014	1,504	911
Applied	294	334	306	325	338	254	268	280	354
Accepted	185	237	200	200	179	150	142	176	217
Enrolled									
Men	36	52	37	40	42	31	29	36	49
Women	78	79	63	58	60	45	48	49	71
<b>TOTAL</b>	<b>114</b>	<b>131</b>	<b>100</b>	<b>98</b>	<b>102</b>	<b>76</b>	<b>77</b>	<b>85</b>	<b>120</b>
Yield rate for accepted students	61.6%	55.3%	50.0%	49.0%	57.0%	52.6%	53.0%	53.0%	55.3%
<b>Special</b>	<b>17</b>	<b>19</b>	<b>21</b>	<b>18</b>	<b>14</b>	<b>10</b>	<b>7</b>	<b>10</b>	<b>22</b>
<b>TOTAL</b>	<b>684</b>	<b>696</b>	<b>762</b>	<b>687</b>	<b>713</b>	<b>692</b>	<b>712</b>	<b>600</b>	<b>707</b>

\*This report is based upon the Admission's Office "Entering Class Profile" prepared in August for the first university faculty meeting each year. Final statistics for matriculating students are prepared by the Institutional Research Office in September for reporting purposes and may differ based on the criteria for determining "new" students and the time of the download.

\*\* "Inquired" includes mailing lists purchased from College Board and other sources.





## Student Life Statistics\*

<b>Fall 2010</b>	First-time, first year students	Undergraduates
Percent from out of state	16%	17%
Percent of men who join fraternities	22%	24%
Percent of women who join sororities	23%	20%
Percent of who live on campus	84%	66%
Percent who live off campus or commute	16%	34%
Percent of students 25 and older	0	6%
Average of full-time students	18	20
Average of all students (full and part-time)	18	20

\*CDS Methodology

## Enrollment of New Students by School

	<b>Fall 2005</b>	<b>Fall 2006</b>	<b>Fall 2007</b>	<b>Fall 2008</b>	<b>Fall 2009</b>	<b>Fall 2010</b>
First Year A & S	260	253	278	304	297	317
First Year Business	139	127	120	131	95	96
First Year Music	55	58	72	62	48	48
First Year Discovery	117	157	125	120	62	86
<b>Total First Year Freshmen</b>	<b>571</b>	<b>595</b>	<b>595</b>	<b>617</b>	<b>502</b>	<b>547</b>
New Transfers A & S	56	55	38	35	45	76
New Transfers Business	27	30	16	17	23	27
New Transfers Music	10	11	18	15	13	8
New Transfers Discovery	6	6	2	4	3	5
<b>Total New Transfers</b>	<b>99</b>	<b>102</b>	<b>74</b>	<b>71</b>	<b>84</b>	<b>116</b>
Total New A & S	316	308	316	339	342	393
Total New Business	166	157	136	148	118	123
Total New Music	65	69	90	77	61	56
Total New Discovery	123	163	127	124	65	91
<b>Total New Students</b>	<b>670</b>	<b>697</b>	<b>669</b>	<b>688</b>	<b>586</b>	<b>663</b>

### Notes about these students counts:

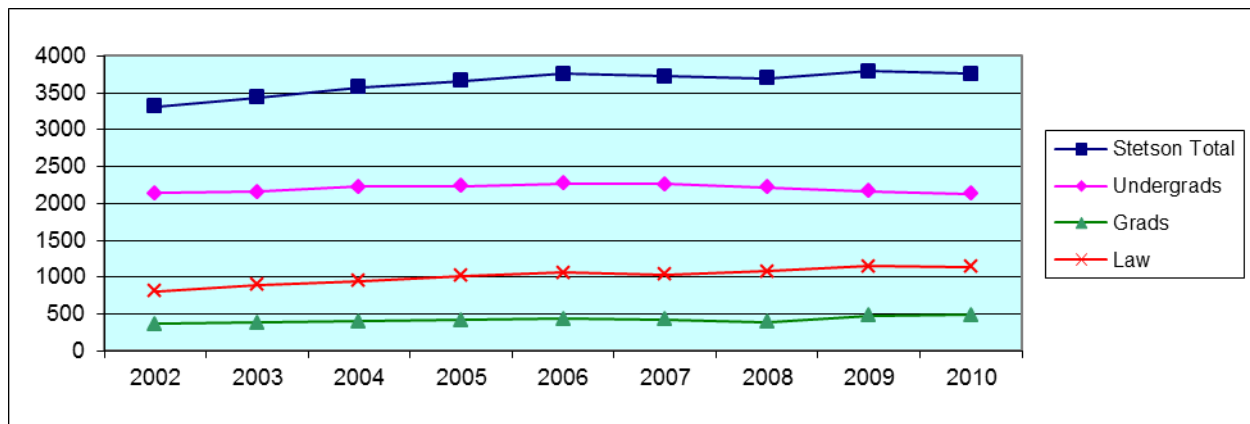
- 1) They include only students who were in the fall census counts -- i.e., they do not include students who paid deposits to attend, but did not make it to the census count.
- 2) They do not include visiting students or transfer transient students which are reported as "new students" in some Admissions reports -- i.e., the counts include only students who we expect to return in subsequent terms.
- 3) They include only DeLand students -- i.e., no Celebration Passport undergrads.

## Enrollment

### Census Headcount, Fall Semester (Historical)

	<u>2002</u>	<u>2003</u>	<u>2004</u>	<u>2005</u>	<u>2006</u>	<u>2007</u>	<u>2008</u>	<u>2009</u>	<u>2010</u>
<b><u>Full-time</u></b>									
Undergraduates	2063	2070	2163	2160	2185	2176	2143	2079	2077
Graduates*	81	93	123	141	146	203*	191*	216*	236*
Post-Bacc	<u>5</u>	<u>4</u>	<u>6</u>	<u>8</u>	<u>14</u>	<u>6</u>	<u>6</u>	<u>13</u>	<u>4</u>
DeLand/Celebration	2149	2167	2292	2309	2345	2385	2340	2308	2317
College of Law	<u>711</u>	<u>736</u>	<u>784</u>	<u>825</u>	<u>853</u>	<u>821</u>	<u>828</u>	<u>950</u>	<u>962</u>
<b>University (Full-time)</b>	<b>2860</b>	<b>2903</b>	<b>3076</b>	<b>3134</b>	<b>3198</b>	<b>3206</b>	<b>3168</b>	<b>3258</b>	<b>3279</b>
<b><u>Part-time</u></b>									
Undergraduates	79	91	67	74	88	88	79	83	57
Graduates	250	259	247	245	255	186*	173*	217*	209*
Post-Bacc	<u>30</u>	<u>27</u>	<u>26</u>	<u>21</u>	<u>17</u>	<u>31</u>	<u>23</u>	<u>34</u>	<u>36</u>
DeLand/Celebration	359	377	340	340	360	305	275	334	302
College of Law	<u>99</u>	<u>159</u>	<u>161</u>	<u>191</u>	<u>204</u>	<u>210</u>	<u>253</u>	<u>198</u>	<u>175</u>
<b>University (Part-time)</b>	<b>458</b>	<b>536</b>	<b>501</b>	<b>531</b>	<b>564</b>	<b>515</b>	<b>528</b>	<b>532</b>	<b>477</b>
<b><u>Total</u></b>									
Undergraduates	2142	2161	2230	2234	2273	2264	2222	2162	2134
Graduates	331	352	370	386	401	389	364	433	445
Post-Bacc	<u>35</u>	<u>31</u>	<u>32</u>	<u>29</u>	<u>31</u>	<u>37</u>	<u>29</u>	<u>47</u>	<u>40</u>
DeLand/Celebration	2508	2544	2632	2649	2705	2690	2615	2642	2619
College of Law	<u>810</u>	<u>895</u>	<u>945</u>	<u>1016</u>	<u>1057</u>	<u>1031</u>	<u>1081</u>	<u>1148</u>	<u>1137</u>
<b>TOTAL University</b>	<b>3318</b>	<b>3439</b>	<b>3577</b>	<b>3665</b>	<b>3762</b>	<b>3721</b>	<b>3696</b>	<b>3790</b>	<b>3756</b>

\*Counseling students with 6 credit hours are full-time



## Census Enrollment by Campus

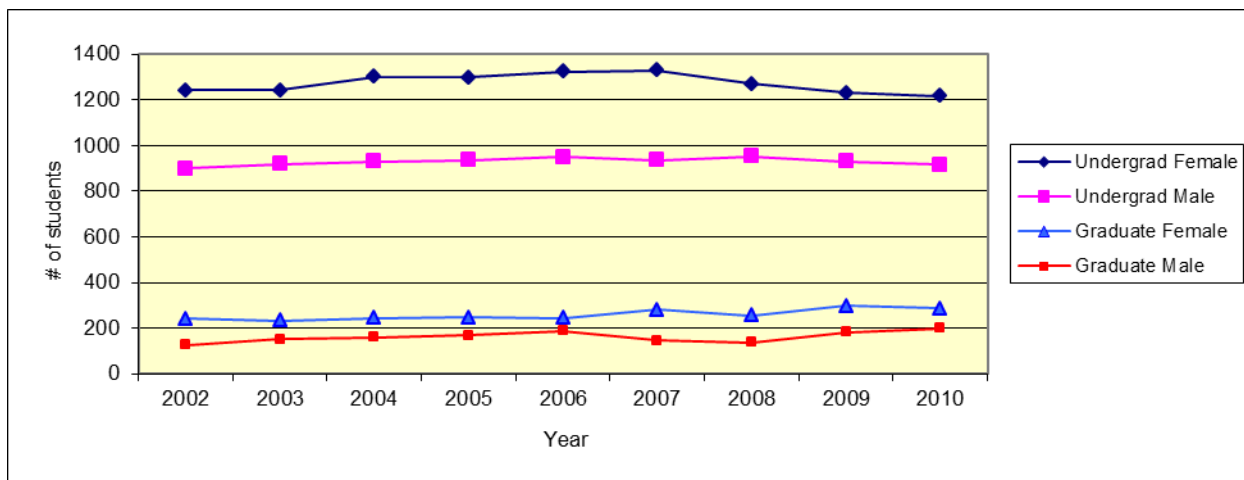
Undergraduates	Fall 2006		Fall 2007		Fall 2008		Fall 2009		Fall 2010	
	FT	PT	FT	PT	FT	PT	FT	PT	FT	PT
DeLand	2163	79	2152	76	2116	67	2044	70	2048	48
Celebration	<u>22</u>	<u>9</u>	<u>24</u>	<u>12</u>	<u>27</u>	<u>12</u>	<u>35</u>	<u>13</u>	<u>29</u>	<u>9</u>
Undergraduate Total	2185	88	2176	88	2143	79	2079	83	2077	57

Graduates	Fall 2006		Fall 2007		Fall 2008		Fall 2009		Fall 2010	
	FT	PT	FT	PT	FT	PT	FT	PT	FT	PT
DeLand Graduates	73	150	121	90	120	67	112	105	111	83
DeLand P-Bacc	<u>12</u>	<u>15</u>	<u>5</u>	<u>28</u>	<u>4</u>	<u>14</u>	<u>11</u>	<u>25</u>	<u>4</u>	<u>31</u>
DeLand Total	85	165	126	118	124	81	123	130	115	114
Celebration Graduates	71	63	81	34	71	59	81	67	88	57
Celebration P-Bacc	<u>2</u>	<u>2</u>	<u>1</u>	<u>3</u>	<u>2</u>	<u>9</u>	<u>2</u>	<u>9</u>	<u>0</u>	<u>5</u>
Celebration Total	73	65	82	37	73	68	83	76	88	62
MBA/JD	<u>2</u>	<u>42</u>	<u>1</u>	<u>62</u>	<u>0</u>	<u>47</u>	1	44	1	41
MBA/MS									0	13
On-line MAcc							<u>22</u>	<u>1</u>	<u>36</u>	<u>15</u>
<b>Graduate Total</b>	<b><u>160</u></b>	<b><u>272</u></b>	<b><u>209</u></b>	<b><u>217</u></b>	<b><u>197</u></b>	<b><u>196</u></b>	<b><u>229</u></b>	<b><u>251</u></b>	<b><u>240</u></b>	<b><u>245</u></b>

## Enrollment by Gender (Historical)

		2002	2003	2004	2005	2006	2007	2008	2009	2010
Undergraduate	Male	900	920	930	937	949	935	953	931	917
	Female	1242	1241	1300	1297	1324	1329	1269	1231	1217
	Total	2142	2161	2230	2234	2273	2264	2222	2162	2134

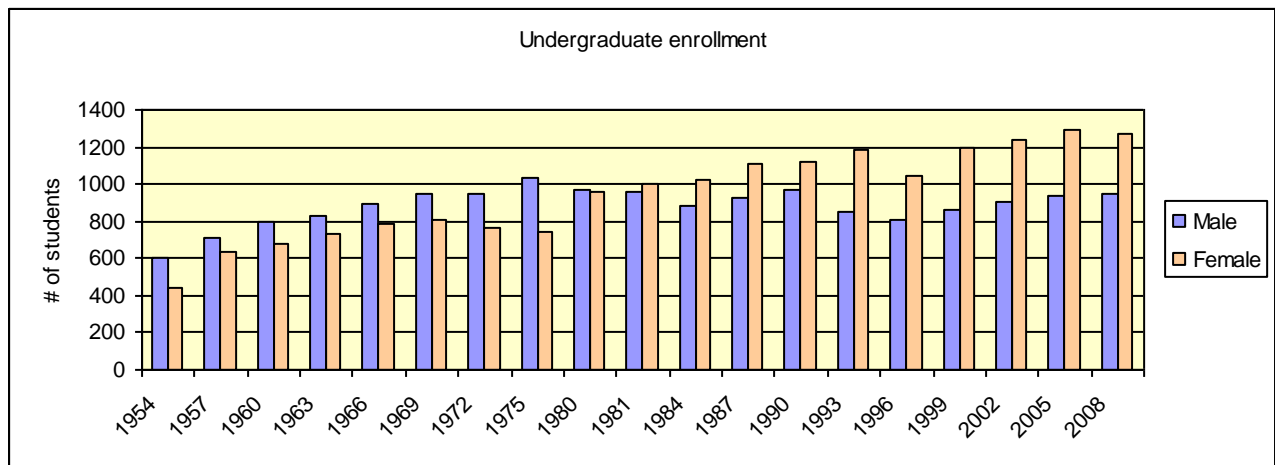
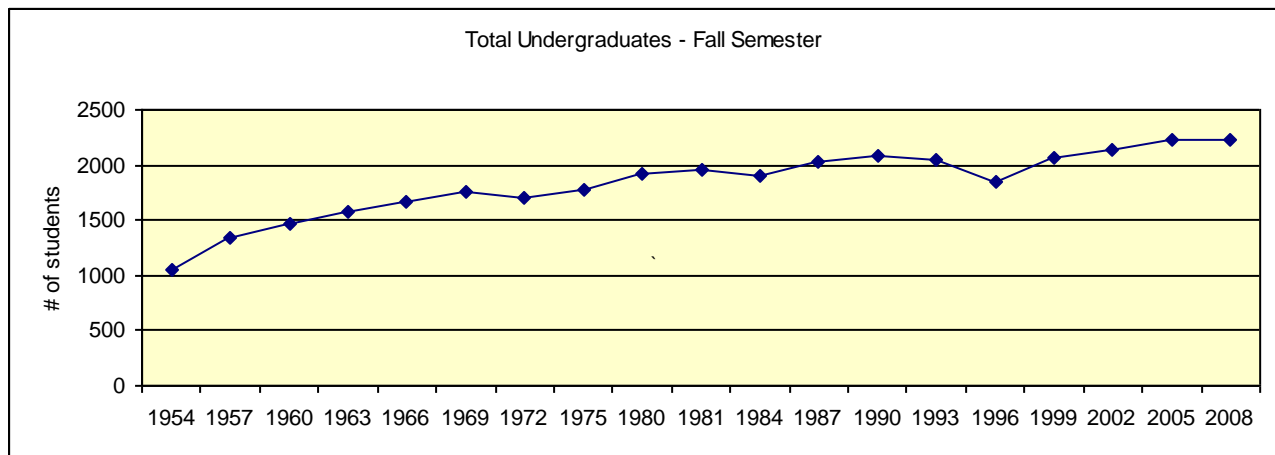
Graduate (excl Law)	Male	125	151	159	168	188	146	138	183	199
	Female	241	232	243	247	244	280	255	297	286
	Total	366	383	402	415	432	426	393	480	485



### Headcount, Fall Semester (Historical - 1954 to 2008)

Undergraduate	Male		Female		TOTAL
	#	%	#	%	
Fall 1954	598	57%	444	43%	1042
Fall 1957	711	53%	634	47%	1345
Fall 1960	792	54%	676	46%	1468
Fall 1963	831	53%	737	47%	1568
Fall 1966	893	53%	782	47%	1675
Fall 1969	944	54%	806	46%	1750
Fall 1972	946	55%	763	45%	1709
Fall 1975	1035	58%	748	42%	1783
Fall 1980	972	50%	955	50%	1927
Fall 1981	954	49%	997	51%	1951
Fall 1984	882	46%	1021	54%	1903
Fall 1987	927	46%	1110	54%	2037
Fall 1990	973	47%	1118	53%	2091
Fall 1993	855	42%	1190	58%	2045
Fall 1996	804	43%	1047	57%	1851
Fall 1999	864	42%	1198	58%	2062
Fall 2002	900	42%	1242	58%	2142
Fall 2005	937	42%	1297	58%	2234
Fall 2008	953	43%	1269	57%	2222

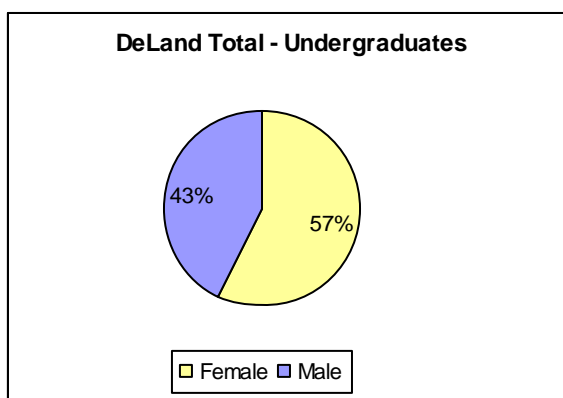
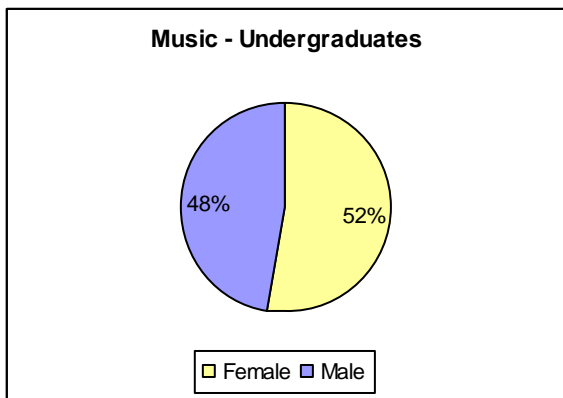
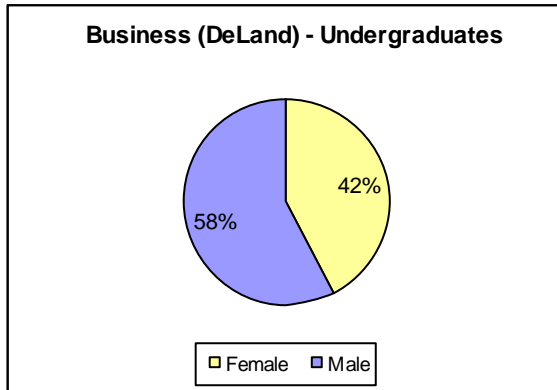
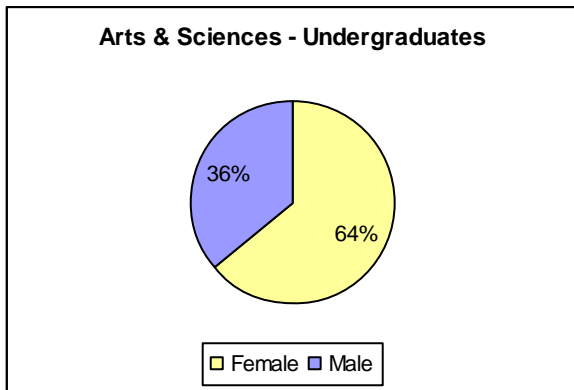
Source: HEGIS and IPEDS Enrollment Reports





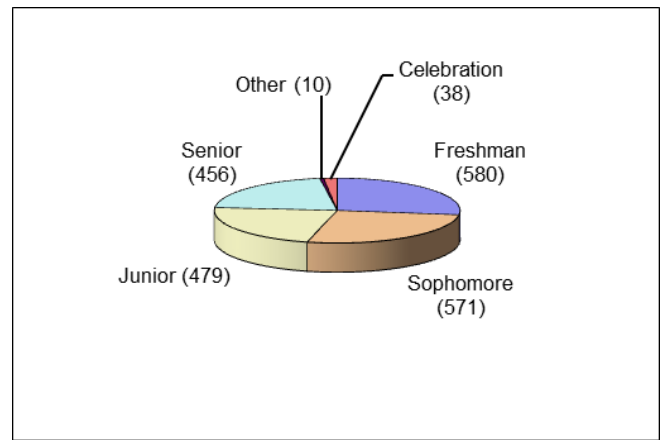
**College or School & Gender (Fall 2010)**

	<b>Female</b>	<b>Male</b>	<b>Total</b>
<b>Arts &amp; Sciences</b>			
Undergraduate	860	478	1338
DeLand Graduate	89	26	115
Celebration Graduate	49	13	62
<b>A &amp; S Total</b>	<b>998</b>	<b>517</b>	<b>1515</b>
<b>Business</b>			
Undergraduate	229	313	542
Passport Undergrad	16	22	38
DeLand Graduate	60	54	114
Celebration Graduate	35	53	88
Law-MBA Graduate	17	25	42
MAcc On-line	32	19	51
MBA-MS	4	9	13
<b>Total</b>	<b>393</b>	<b>495</b>	<b>888</b>
<b>Music</b>			
Undergraduate only	112	104	216
<b>Law</b>	<b>597</b>	<b>540</b>	<b>1137</b>
<b>Stetson Total</b>	<b>2100</b>	<b>1656</b>	<b>3756</b>



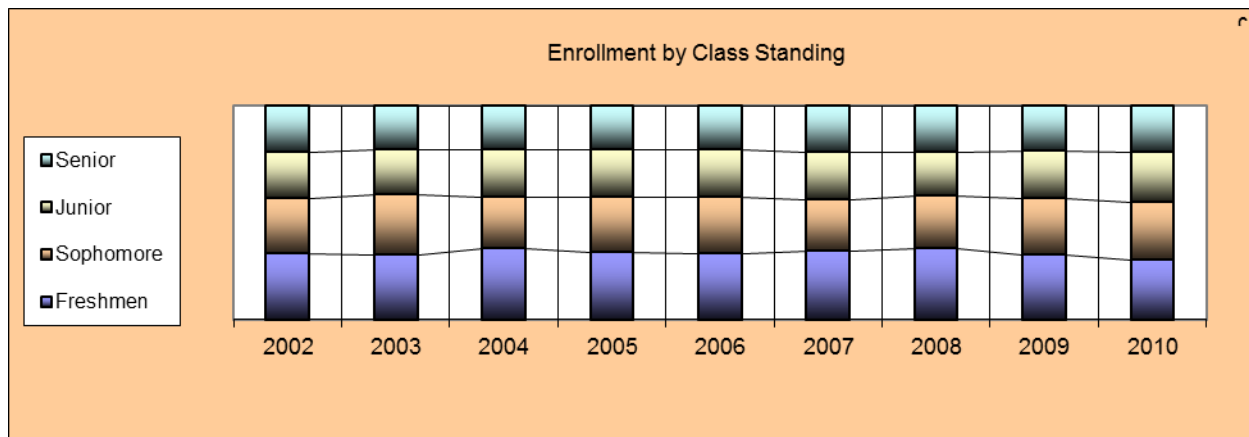
### Class Standing\* - Undergraduate (Fall 2010)

Headcount	Female	Male	Total
Freshmen	336	244	580
Sophomore	316	255	571
Junior	273	206	479
Senior	270	186	456
Other	6	4	10
Celebration	16	22	38
<b>TOTAL</b>	<b>1217</b>	<b>917</b>	<b>2134</b>



### Class Standings - Undergraduate (Historical)

	2002	2003	2004	2005	2006	2007	2008	2009	2010
Freshmen	659	657	738	697	693	715	725	642	580
Sophomore	544	594	539	579	590	534	540	548	571
Junior	460	455	481	482	489	491	442	469	479
Senior	469	438	459	462	460	480	469	444	456
Other	10	17	13	14	10	8	7	11	10
Celebration					31	36	39	48	38



### \*Class Standing Definitions:

Freshmen	0 – 26 hours earned
Sophomore	27 – 59 hours earned
Junior	60 – 89 hours earned
Senior	90+ hours earned

## Ethnicity (Fall 2010)

	Undergraduate		Graduate & Post Bacc		Law	
	#	%	#	%	#	%
African American	123	5.8%	33	6.8%	60	5.3%
Native American	6	.3%	1	.2%	10	.9%
Asian	32	1.5%	9	1.9%	26	2.3%
Hawaiian/Pacific Islander	4	.2%	0	0	2	.2%
Hispanic / Latino	252	11.8%	44	9.1%	97	8.5%
White (US Resid)	1552	72.7%	334	68.9%	837	73.6%
Intl / Res. Alien	88	4.1%	23	4.7%	31	2.7%
Two or more races	51	2.4%	9	1.9%	26	2.3%
Unknown	26	1.2%	32	6.6%	48	4.2%

## Enrollment By Ethnicity - Undergraduate (Historical)

	Fall 2004	Fall 2005	Fall 2006	Fall 2007	Fall 2008	Fall 2009	Fall 2010
African American	80	89	109	105	110	124	123
Native American	7	11	10	8	11	9	6
Asian	39	39	38	48	50	41	32
Hawaiian/Pacific Islander							4
Hispanic / Latino	124	158	193	199	217	235	252
White (US Resid)	1802	1730	1716	1687	1639	1563	1552
Intl / Non-Res. Alien	79	81	62	76	70	78	88
Two or more races							51
Other*	99	126	145	49	44	65	
Unknown*				92	81	47	26
Total	2230	2234	2273	2264	2222	2162	2134

\*Other and Unknown combined prior to Fall 2007

## ALANA Enrollment - Undergraduate (Historical)

(Ethnicity of all students, including non-residents, who do not consider themselves White/Caucasian)

	Fall 2004	Fall 2005	Fall 2006	Fall 2007	Fall 2008	Fall 2009	Fall 2010
Hispanic / Latino	130	167	198	204	222	242	235
African American / Black	84	92	112	113	119	132	141
Asian	47	44	41	54	55	50	49
Native American / Alaskan	7	11	10	8	11	9	10
Native Hawaiian, Pacific Islander							6
Two or More Races							67

Note: Beginning Fall 2010, the U.S. Dept. of Education changed categories for reporting ethnicity. For more information, see the National Center for Education Statistics website at: [http://nces.ed.gov/ipeds/news\\_room/ana\\_Changes\\_to\\_10\\_25\\_2007\\_169.asp](http://nces.ed.gov/ipeds/news_room/ana_Changes_to_10_25_2007_169.asp).

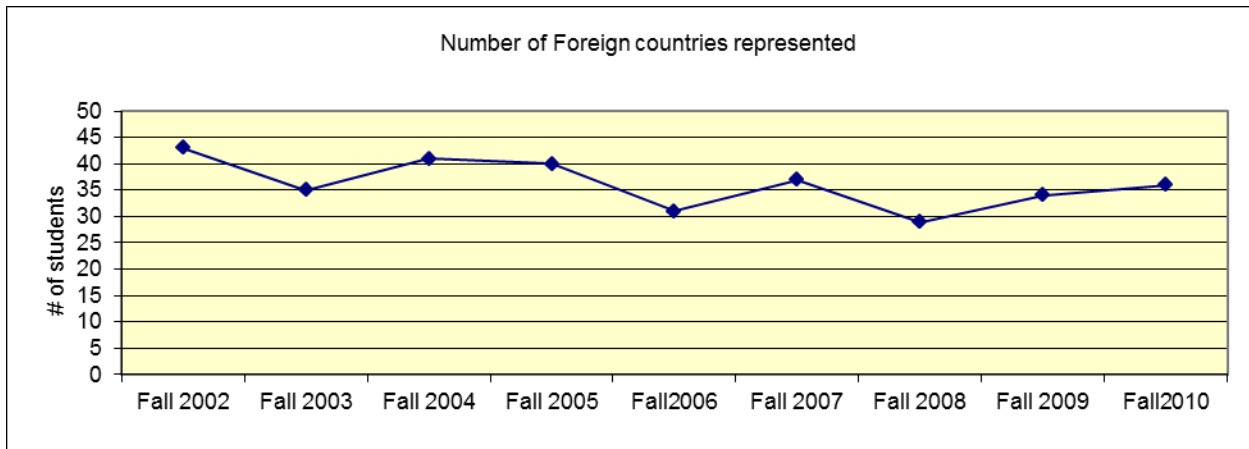
The Institutional Research Office suggests that you do not compare Fall 2010 data to previous years as comparisons are not valid.

## International / Non-Resident Students Home country - Undergraduate (Fall 2010)

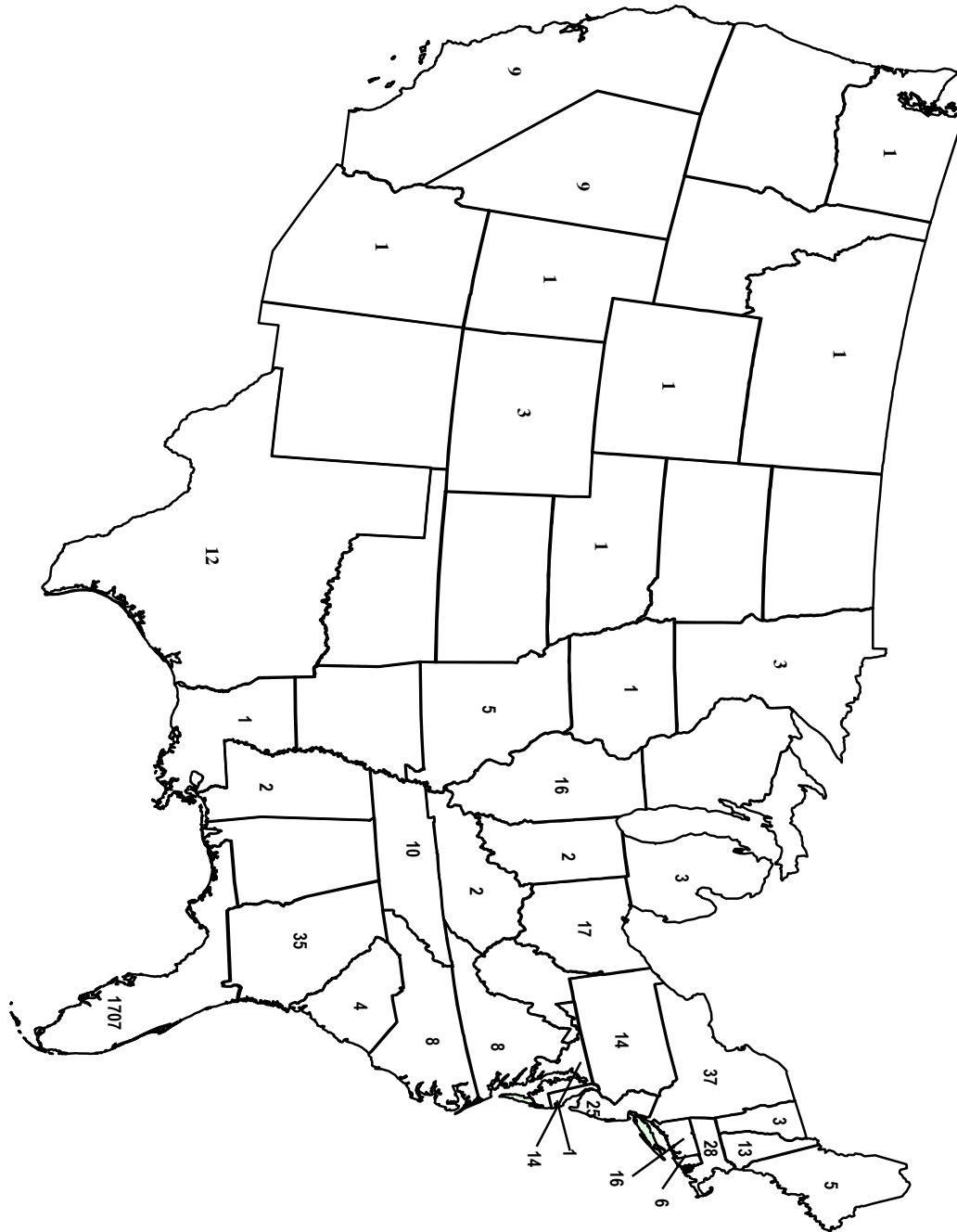
Jamaica	8	Venezuela	2	Japan	1
Saudi Arabia	8	Austria	1	Mexico	1
China	7	Bahamas	1	Myanmar	1
Germany	5	Belarus	1	Poland	1
Norway	5	Belgium	1	Russia	1
United Kingdom	5	Bermuda	1	Slovenia	1
Australia	4	Bulgaria	1	South Korea	1
Canada	4	Cayman Islands	1	Spain	1
Italy	3	Congo	1	Sri Lanka	1
Dominican Republic	2	Ecuador	1	Taiwan	1
France	2	Ethiopia	1	Uruguay	1
India	2	Israel	1	Yemen	1

## Number of Foreign Countries represented (Historical)

2002-03	2003-04	2004-05	2005-06	2006-07	2007-08	2008-09	2009-10	2010-11
43	35	41	40	31	37	29	34	36



## Enrollment by Home State - Fall 2010 (Undergraduates)



## Enrollment by Home State - Undergraduate (Historical)

	2002	2003	2004	2005	2006	2007	2008	2009	2010
Alabama	9	2			2	1	2	2	
Alaska	1			1	1	1	1		
Arizona	2	3	1	1	3	2		1	1
Arkansas	2	2	1		3	2	1	1	
California	4	4	8	12	9	9	6	8	9
Colorado	4	6	12	11	11	8	7	3	3
Connecticut	33	24	29	31	37	40	35	28	16
Delaware		1	1	1	2	1	2	2	1
Florida	1594	1665	1705	1672	1776	1757	1770	1721	1707
Georgia	51	39	36	33	27	30	36	36	35
Hawaii									
Idaho	2								
Illinois	11	16	13	15	13	13	12	12	16
Indiana	9	3	3	5	6	4	4	3	2
Iowa	2			1	2	2	2	1	1
Kansas	6	3	1		1				
Kentucky	6	5	6	10	7	3	4	2	2
Louisiana	4	3	3	1	2	3	5	5	1
Maine	9	9	11	9	18	17	11	10	5
Maryland	18	17	21	23	17	19	15	17	14
Massachusetts	44	41	52	53	54	47	39	33	28
Michigan	3	2	4	5	6	7	4	4	3
Minnesota	4	3	7	8	4	5	3	3	3
Mississippi	2	3	1	1	3	4	2	2	2
Missouri	8	6	9	7	5	5	6	5	5
Montana								1	1
Nebraska	1		3	1	1			1	1
Nevada					1	1			
New Hampshire	16	21	20	21	17	17	15	12	13
New Jersey	21	23	26	28	25	26	21	19	25
New Mexico	2	2	2	2	3	2	3		
New York	47	30	36	41	32	36	42	31	37
North Carolina	11	6	7	11	11	11	8	10	8
North Dakota									
Ohio	14	11	10	12	9	16	12	12	17
Oklahoma	4	3	3	3					
Oregon	2	2	2	2	1				
Pennsylvania	31	22	21	26	21	20	24	18	14
Rhode Island	8	7	6	3	4	6	6	5	6
South Carolina	13	15	12	12	5	3	3	5	4
South Dakota	1			1	1	1			
Tennessee	14	18	16	12	6	7	9	10	10
Texas	17	11	16	17	16	16	13	7	12
Utah	3	2	2	1	1	3	3	1	1
Vermont	2	6	5	3	3	2	4	5	3
Virginia	19	14	16	19	18	16	8	9	8
Washington	2	1	2	1	1				1
West Virginia	1	2	2	2	3	6	3	2	
Wisconsin	6	7	5	6	4	1	1	1	
Wyoming			1					2	1
Total	2063	2060	2137	2124	2192	2170	2142	2050	2016

## Undergraduate Enrollment by Florida County (Historical)

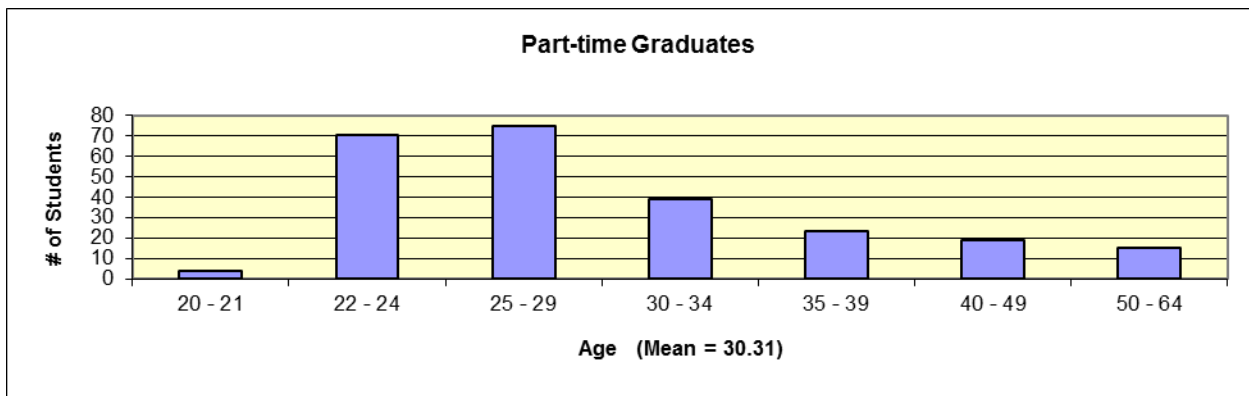
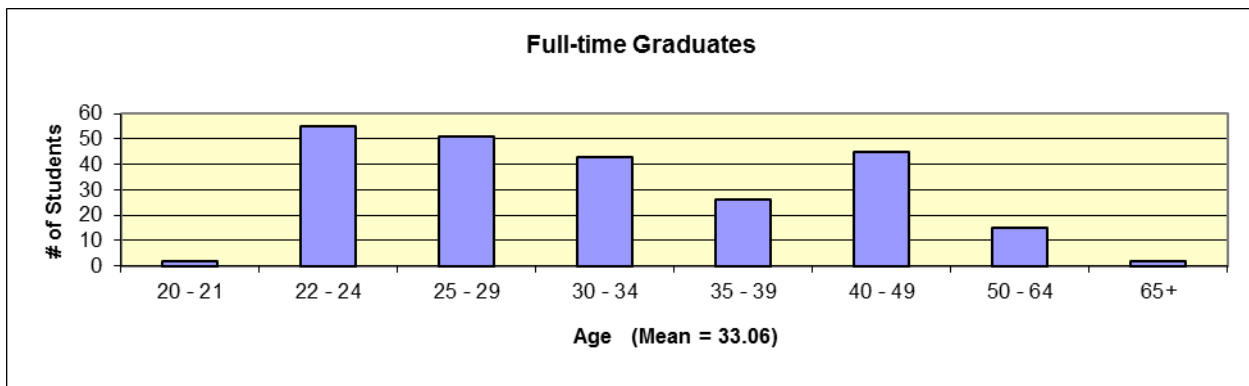
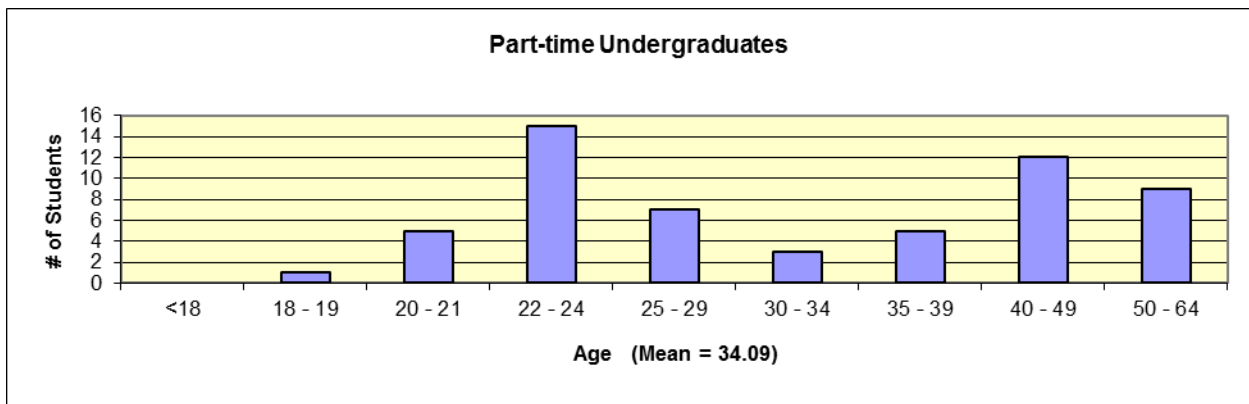
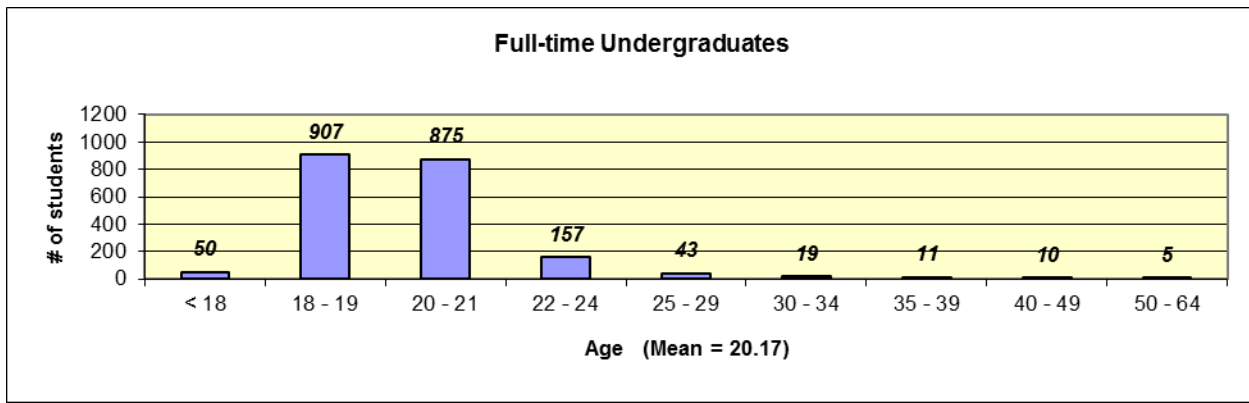
	2006	2007	2008	2009	2010
Alachua	15	10	15	10	12
Bay	11	10	10	13	12
Brevard	91	76	63	66	68
Broward	62	62	64	57	58
Charlotte	13	13	20	20	15
Citrus	10	16	8	8	9
Clay	15	18	22	17	23
Collier	37	42	30	29	36
Columbia	1	0	2	1	4
Dade	39	37	42	44	39
Desoto	5	4	2	3	2
Dixie	0	0	0	0	1
Duval	51	53	53	49	48
Escambia	3	3	4	7	7
Flagler	30	33	30	30	29
Gilchrist	0	0	0	0	2
Gulf	1	1	2	2	0
Hardee	0	1	0	0	0
Hendry	1	1	0	1	2
Hernando	13	14	12	9	9
Highlands	6	4	7	10	11
Hillsborough	38	42	46	44	44
Indian River	28	31	22	31	29
Jackson	1	1	0	0	0
Lafayette	1	1	1	0	0
Lake	51	58	60	65	64
Lee	44	41	39	38	33
Leon	16	16	19	14	12

	2006	2007	2008	2009	2010
Levy	0	0	2	3	3
Madison	3	2	2	1	0
Manatee	29	28	29	21	23
Marion	17	21	21	25	31
Martin	37	39	32	28	21
Monroe	11	8	8	7	4
Nassau	4	4	6	8	7
Okaloosa	11	11	12	8	6
Okeechobee	2	4	4	1	1
Orange	144	152	168	145	143
Osceola	35	34	35	38	23
Palm Beach	91	105	109	103	95
Pasco	19	18	16	15	16
Pinellas	60	68	62	55	48
Polk	32	35	37	40	38
Putnam	7	5	5	6	5
Santa Rosa	4	2	4	3	5
Sarasota	38	33	33	35	34
Seminole	125	119	109	110	118
St. Johns	30	29	33	30	26
St. Lucie	25	23	28	24	28
Sumter	3	1	2	0	2
Suwannee	1	2	4	7	3
Union	1	1	1	0	0
Volusia	464	419	428	436	452
Wakulla	0	0	0	0	0
Walton	0	1	1	1	3

## Enrollment by Religious Affiliation - Undergraduate (Fall 2010)

Anglican	2	Eastern Religions, Other	15	Presbyterian	67
Assembly of God	16	Episcopal	49	Protestant Christian	17
Baptist	150	Hindu	3	Seventh Day Adventist	5
Buddhism	5	Islam (Muslim/Moslem)	3	Unitarian	1
Catholic	414	Jewish	47	United Church of Christ	9
Christian & Mission Alliance	1	Lutheran	50	Non Denominational Christian	141
Church of Christ	13	Methodist	101	No preference	234
Church of God	21	Mormon Latter Day Saints	2	Unknown	650
Disciples of Christ	28	Others	64	<b>TOTAL</b>	<b>2134</b>
Eastern Orthodox	8	Pentacostal Holiness	18		

## Age Distribution (Fall 2010)

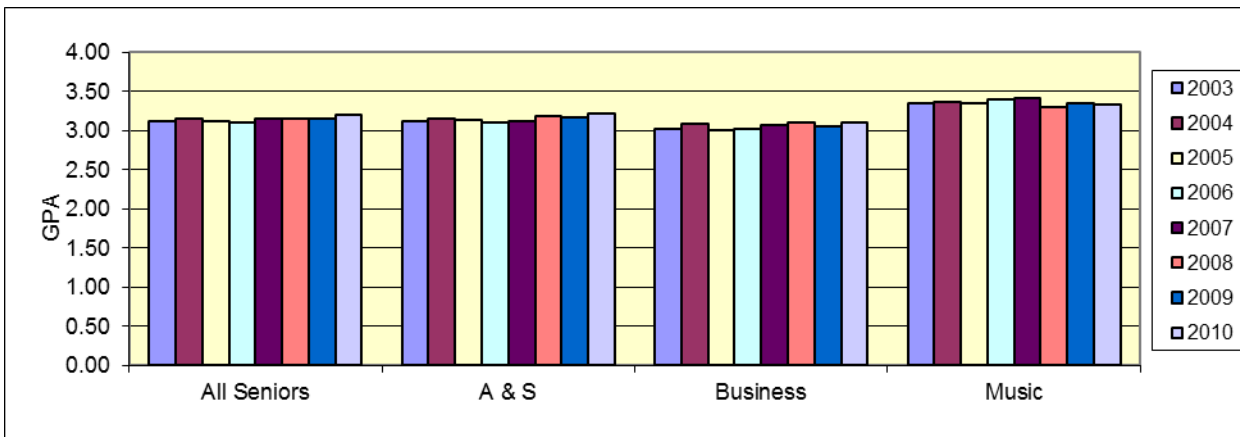
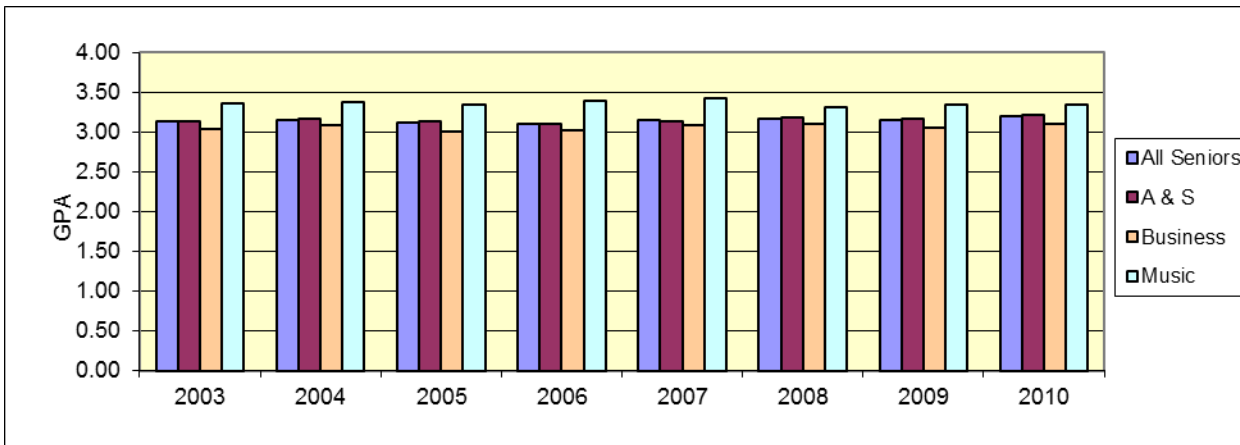




## Average Senior cumulative GPA's (Historical)

(Spring Semester)	2003	2004	2005	2006	2007	2008	2009	2010
All Seniors	3.13	3.15	3.12	3.11	3.15	3.16	3.15	3.20
Arts & Sciences	3.13	3.16	3.14	3.10	3.13	3.18	3.17	3.22
Business	3.03	3.09	3.01	3.02	3.08	3.10	3.06	3.10
Music	3.36	3.37	3.35	3.40	3.42	3.31	3.35	3.34

Spring 2010	All seniors	A & S	Business	Music
95th Percentile (Top 5%)	3.90	3.88	3.95	3.96
90th Percentile (Top 10%)	3.83	3.83	3.82	3.86
80th Percentile (Top 1/5)	3.69	3.70	3.62	3.79
75th Percentile (Top 1/4)	3.62	3.63	3.55	3.74
67th Percentile (Top 1/3)	3.51	3.52	3.36	3.63
60th Percentile (Top 40%)	3.38	3.43	3.26	3.58
50th Percentile (Top 1/2, median)	3.24	3.26	3.10	3.39
40th Percentile	3.10	3.17	2.99	3.27
25th Percentile	2.85	2.89	2.73	3.03



## Class Statistics

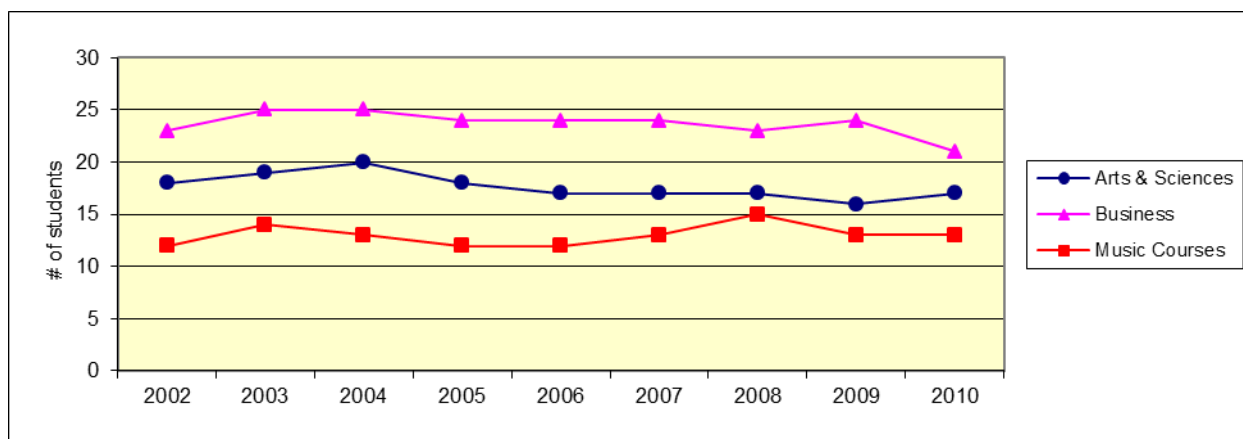
### Average Class Size - Undergraduate (Fall 2010)

	Lower Level	Upper Level	Combined
Arts & Sciences	19	15	17
Education	22	10	14
Humanities	17	13	16
Natural Sciences	21	12	18
Social Sciences	22	17	19
Business	24	19	21
Music Courses	14	11	13
Music Ensembles	16	20	18
Applied Music	3	2	2

Independent Study is excluded from the above. The number of Independent Study sections across all schools = 43.

### Average Class Size - Undergraduate (Historical)

	2002	2003	2004	2005	2006	2007	2008	2009	2010
Arts & Sciences	18	19	20	18	17	17	17	16	17
Education	12	15	13	12	12	14	12	10	14
Humanities	16	17	17	17	16	16	16	15	16
Natural Sciences	18	20	22	19	20	20	18	18	18
Social Sciences	22	22	24	23	21	19	20	19	19
Business	23	25	25	24	24	24	23	24	21
Music Courses	12	14	13	12	12	13	15	13	13
Music Ensembles	16	17	17	17	17	17	19	19	18
Applied Music	2	2	2	3	3	3	3	3	2



# STUDENT LIFE

## Athletics

### Intercollegiate Athletics

Stetson is a member of the National Collegiate Athletic Association, and both men's and women's teams compete on a Division I level. Hatter basketball and baseball teams play national schedules and have achieved ranking as major powers.

#### Men's Teams

Baseball  
Basketball  
Crew  
Cross Country  
Golf  
Soccer  
Tennis

#### Women's Teams

Basketball  
Crew  
Cross Country  
Golf  
Soccer  
Softball  
Tennis  
Volleyball

### Club Sports

Club Sports provide opportunities for Stetson University students to continue participating or learn a new sport activity. The competition level of Club Sports falls between intramural sports and intercollegiate athletics.

Aikido  
Croquet  
Equestrian  
Fishing

Lacrosse  
Mixed Martial Arts  
Sand Volleyball  
Shooting

Surf  
Swim  
Table Tennis  
Tennis  
Ultimate Frisbee

### Intramural Program

The Intramural Program offers young men and women the opportunity to manage, officiate, direct and participate in physical activities with the conviction that this participation will promote stability, coordination, sportsmanship, and a sense of leadership which will touch all aspects of their lives. The following sports are available to both men and women:

Baseball  
Basketball  
Bowling  
Dodge Ball  
Flag Football  
Floor Ball/Hockey

Golf  
Kickball  
Sand Volleyball  
Soccer  
Softball

Swimming  
Tennis  
Ultimate Frisbee  
Volleyball  
Wiffleball

## Organizations and Clubs

Stetson has many organizations open to all students, affording a variety of activity. Membership in some organizations is based upon special interests or academic achievement; others are primarily social.

### Social Organizations

#### Social Sororities

Alpha Chi Omega  
Alpha Xi Delta  
Delta Delta Delta  
Pi Beta Phi  
Zeta Tau Alpha

#### Social Fraternities

Delta Sigma Phi  
Phi Sigma Kappa  
Pi Kappa Alpha  
Pi Kappa Phi  
Sigma Nu  
Sigma Phi Epsilon

### Honorary and Academic Organizations

Alpha Kappa Delta (Sociology)  
Alpha Kappa Psi  
American Chemical Society Stetson Student Chapter  
American Choral Directors Association  
American Marketing Association  
American Medical Student Association  
American Pre-Vet Medical Association  
Association for Computing and Machinery  
Beta Alpha Psi  
Beta Beta Beta (Biology)  
Beta Gamma Sigma  
Chi Sigma Iota (Counseling)  
Collegiate Music Educators  
Delta Phi Alpha (German)  
Florida Future Educators of America  
Future Leaders Association  
Gamma Sigma Epsilon (Chemistry)  
Gamma Theta Upsilon (Geology)  
German Club  
Higher Education Careers  
Kappa Delta Pi  
Lambda Pi Eta

Mortar Board  
Omicron Delta Epsilon  
Omicron Delta Kappa (Leadership)  
Order of Omega  
Phi Alpha Delta (Pre-Law)  
Phi Alpha Theta (History)  
Phi Eta Sigma  
Philosophy Club  
Phi Beta Kappa (General)  
Phi Mu Alpha Sinfonia  
Pi Delta Phi (French)  
Pi Kappa Lambda  
Pi Sigma Alpha (Political Science)  
Psi Chi (Psychology)  
Russian Club  
Sigma Alpha Iota  
Sigma Delta Pi (Spanish)  
Sigma Pi Sigma (Physics)  
Sigma Tau Delta  
Stetson with Advanced Technology  
Theta Alpha Kappa (Religious Studies)  
Theta Alpha Phi (Theatre)

### Religious Organizations

Canterbury House  
Catholic Campus Ministry  
Cooperative Collegiate Fellowship (Baptist)  
Interfaith Council

Intersivity Christian Fellowship  
Jewish Student Organization  
Meditation of Mind  
Wesley House

## **Service Organizations**

C.A.U.S.E.  
Circle K International  
Habitat for Humanity  
Into the Streets  
Providing Animals with Service

Relay for Life  
Student Philanthropy Association  
Students Homeless Coalition  
SuperKids!

## **Campus Life Organizations**

Council for Student Activities (CSA)  
Family and Friends Weekend  
FOCUS  
Greenfeather  
Interfraternity Council (IFC)

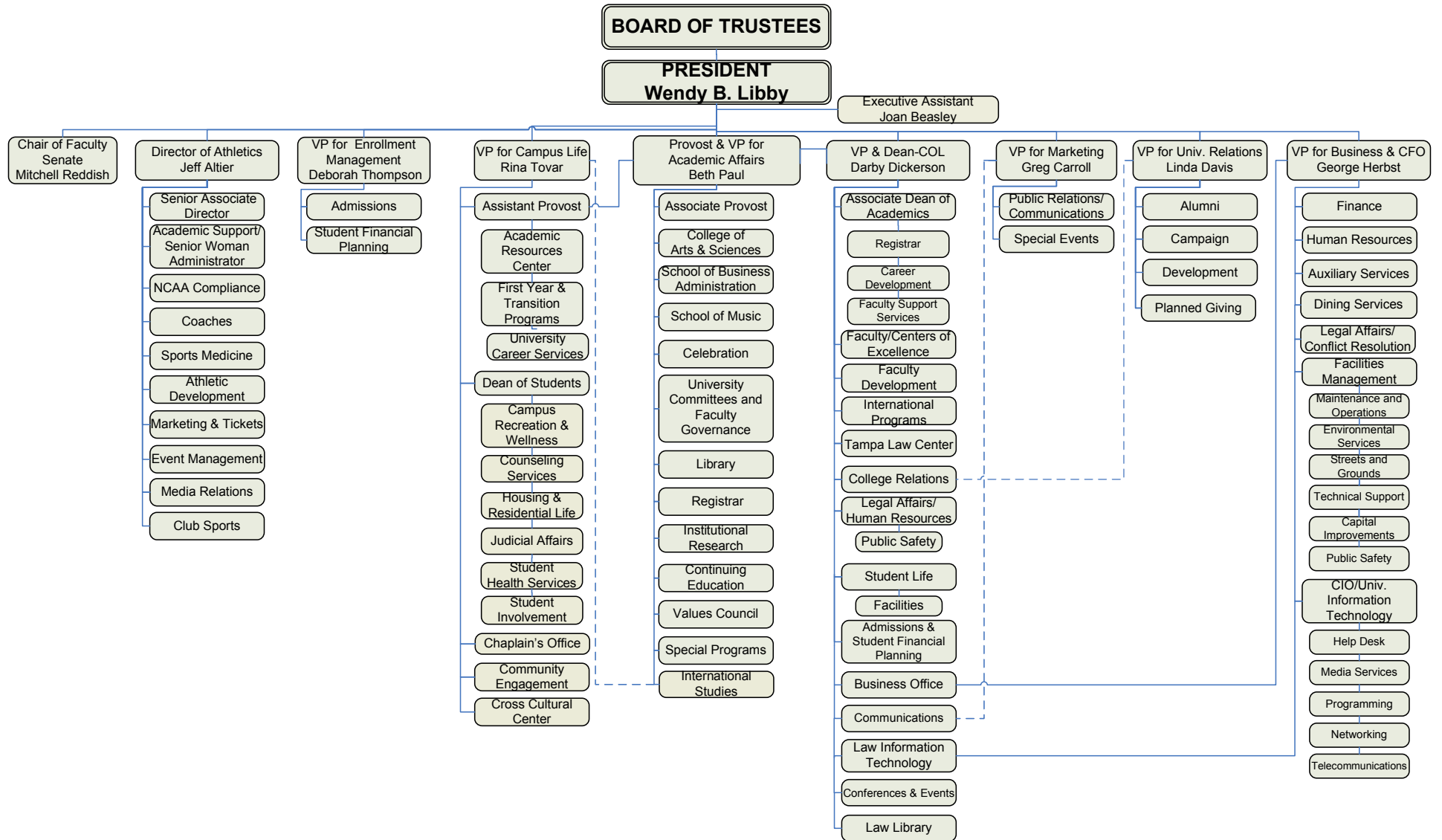
Multicultural Student Council (MSC)  
Panhellenic Council (PH)  
Student Government Association (SGA)  
The Reporter (Newspaper)  
Touchstone Literary Magazine / Poetry at an Uncouth Hour

## **Special Interest Organizations**

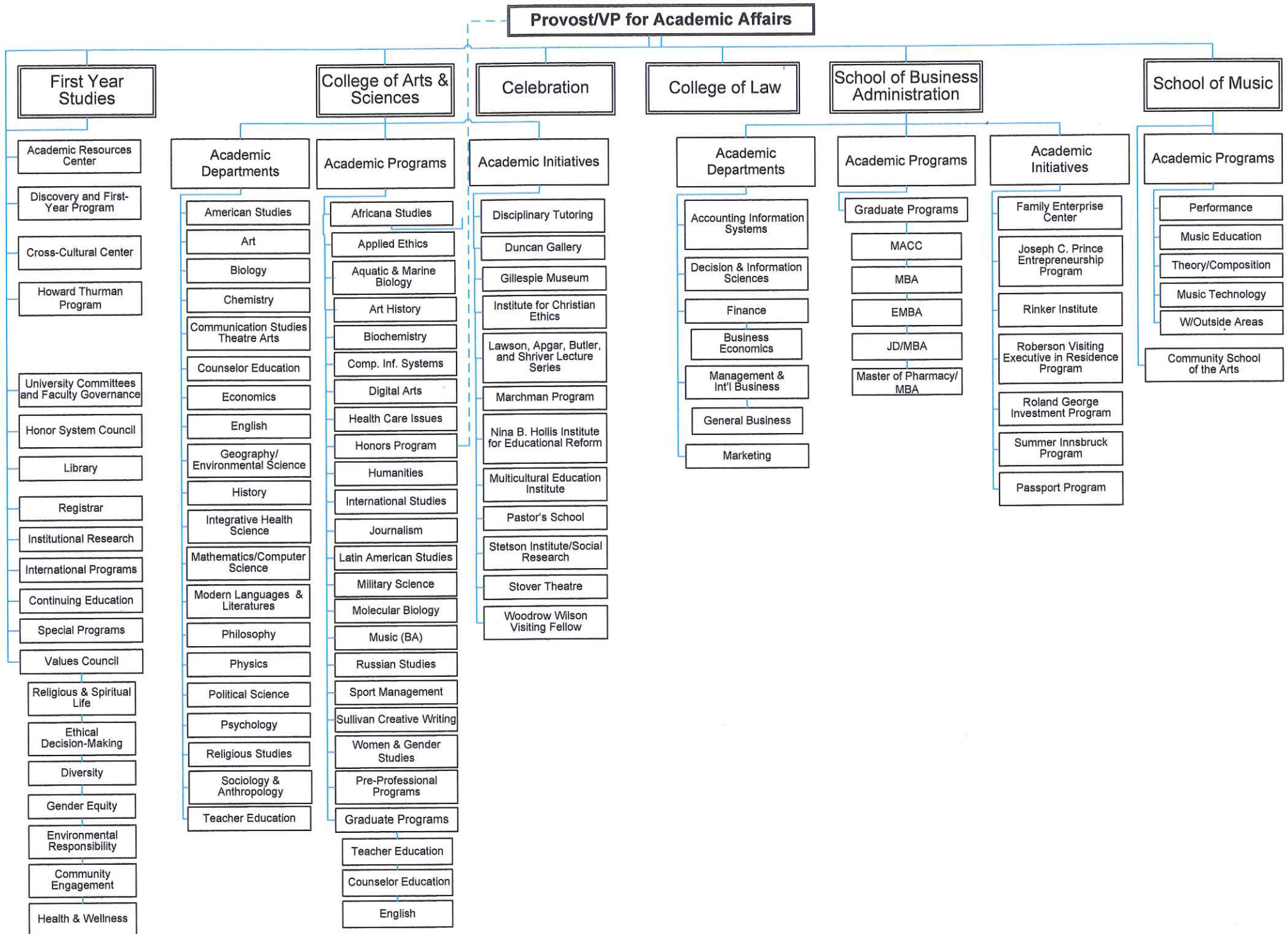
American Civil Liberties Union  
Assoc. of Disability Advocates  
Black Student Association  
Caribbean Student Organization  
College Democrats  
College Libertarians  
College Republicans  
Film Appreciation Society  
French Club  
Green Hat Media  
Hammock Appreciation Society  
Hatter Harvest  
Hatter Tennis Team  
Hindsight  
Hip-Hop Hatter Dance Team  
Hispanic Organization for Latin Awareness  
International Student Organization  
Investment Organization  
Invisible Children United  
Kaleidoscope  
MedEx  
Model United Nations

Model US Senate  
Muslim American Student Association  
National Organization for Women  
New Music Machine  
NightCap  
O.S.A.P.E. (Organization for Students Actively Pursuing Equality)  
Oxfam Club  
QED (Math Club)  
SOAR (Stetson Outdoor Adventures and Recreation)  
S.P.A.R.K.  
STAND Coalition -  
Students Taking Action Now: Darfur  
States' Rights Constitutionals  
Stetson Cycles  
Stetson Recycles  
Stetson Sport Management Association  
Stetson Student-Athlete Advisory Committee  
Stetson University Sports and Entertainment Law Society  
Student Media and Publications Board  
Stetson Votes  
Student Alumni Association  
Swing and Blues Society

# STETSON UNIVERSITY ORGANIZATIONAL CHART 2010-11 (10/20/10)



# ACADEMIC ORGANIZATIONAL CHART 2010-11



## Faculty

### Full-time Faculty - by Rank, Gender, Ethnicity (DeLand Campus, 1999-2009)

	NR/Alien		Black, non-Hispanic		Asian / Pacific Islander		Hispanic		White, non-Hispanic		Other	Total
	Men	Women	Men	Women	Men	Women	Men	Women	Men	Women	M / W	

#### As of 11/1/01

Professors			1						47	12		60
Associate professors			1	3		2		2	35	18		61
Assistant professors		1	3	1	1		3		12	23		44
Instructors/Lecturers							1	3	7	12		23
Other faculty					1				5	2		8
TOTAL		1	5	4	2	2	4	5	106	67		196

#### As of 11/1/03

Professors			1						51	14		66
Associate professors			1	4		2	1	2	30	21		61
Assistant professors			2	1	2		1		18	19	1 / 0	44
Instructors/Lecturers								3	6	6		15
Other faculty	1				1				5	1		8
TOTAL	1		4	5	3	2	2	5	110	61	1 / 0	194

#### As of 11/1/05

Professors			1		1	1		1	51	15		70
Associate professors				4		1	1	1	27	24		58
Assistant professors	2	1	1	1			1		20	16	1 / 0	43
Instructors/Lecturers		1						2	6	11		20
TOTAL	2	2	2	5	1	2	2	4	104	66	1 / 0	191

#### As of 11/1/07

Professors			1			1		1	50	16		69
Associate professors	2			3		1	2		27	29		64
Assistant professors	2	1	1	1					13	6	1 / 0	25
Instructors/Lecturers		1					1	2	6	9		19
Other faculty					1				2	4	0 / 1	8
TOTAL	4	2	2	4	1	2	3	3	98	64	1 / 1	185

#### As of 11/1/09

Professors			1			1		1	43	21	2 / 0	68
Associate professors	3		1	3		1	2		28	23	1 / 1	63
Assistant professors	1	1		2	1				14	4		23
Instructors/Lecturers								1	5	9		15
Other faculty	1				1				3	3	0 / 2	10
TOTAL	5	1	1	5	2	2	2	2	93	60	3 / 3	179

Source: IPEDS Fall Staff Survey



## Percent of Full-Time teaching Faculty with Terminal Degrees, DeLand - Historical

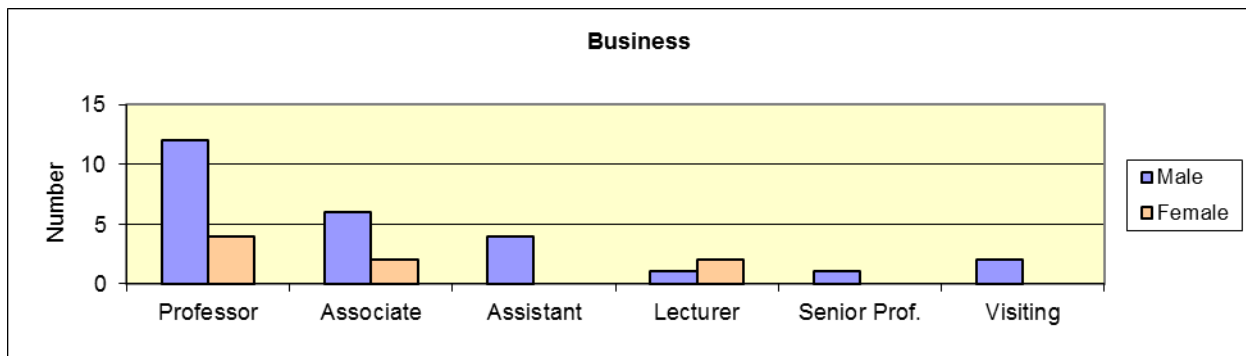
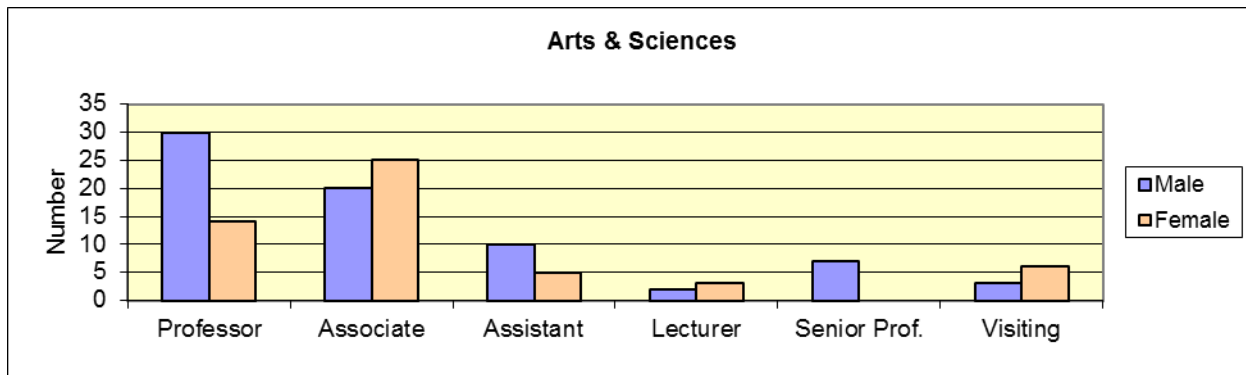
(includes Sabbaticals/Leaves)

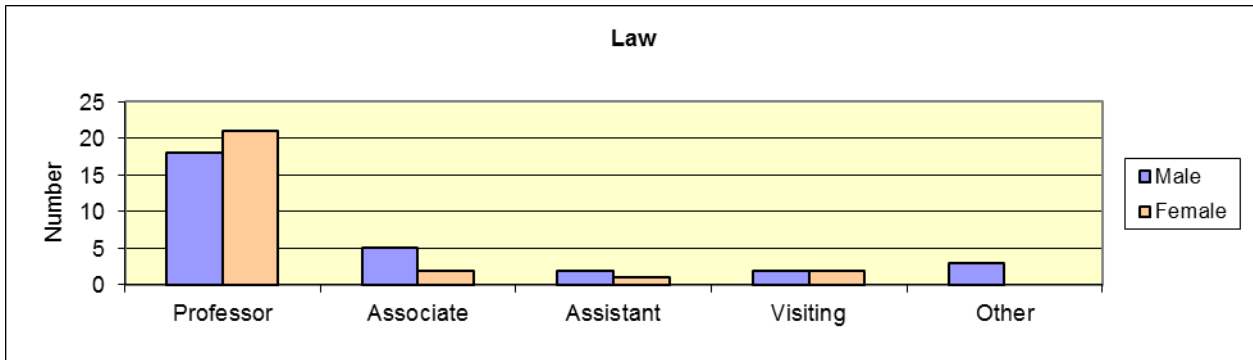
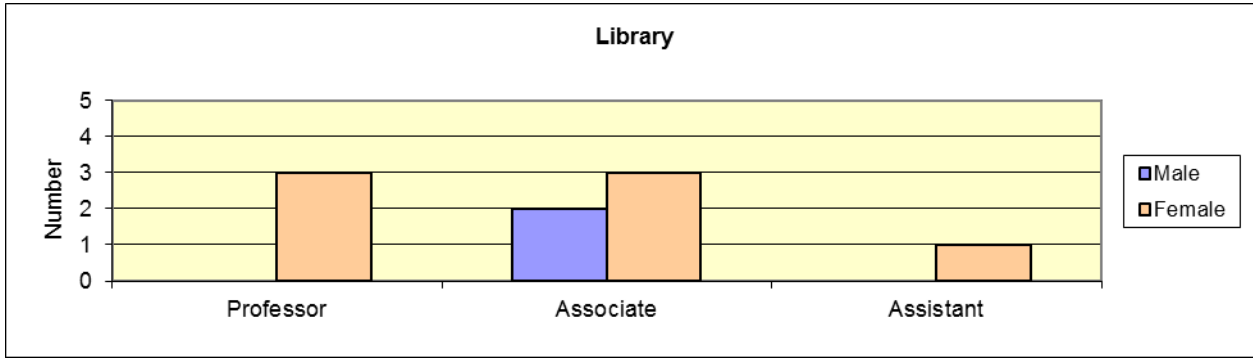
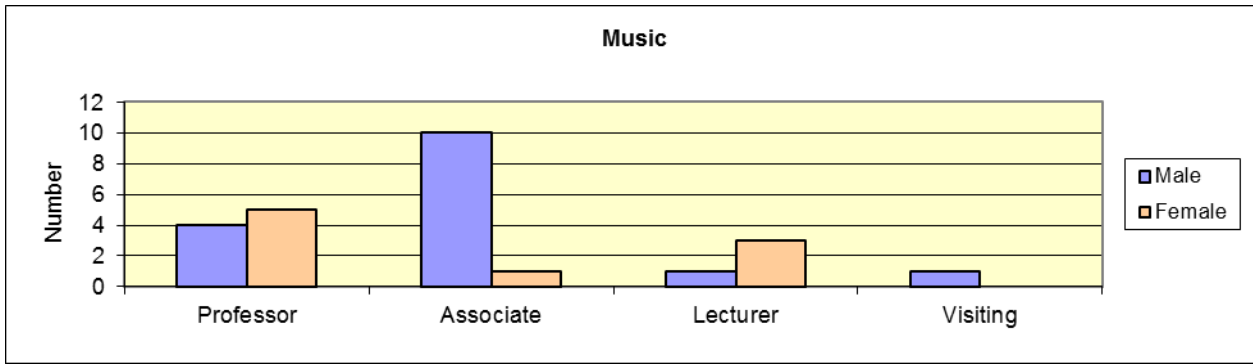
	2003	2004	2005	2006	2007	2008	2009	2010
Professors	100%	100%	100%	100%	100%	100%	99%	99%
Associate Professors	97%	96%	97%	94%	94%	94%	95%	95%
Assistant Professors	82%	81%	83%	93%	92%	86%	92%	89%
Instructors/Lecturers/Visiting	52%	48%	60%	62%	63%	67%	72%	75%
Senior Lecturer	100%	100%	100%	100%	100%	100%	100%	100%
<b>TOTAL</b>	<b>90%</b>	<b>89%</b>	<b>90%</b>	<b>92%</b>	<b>92%</b>	<b>92%</b>	<b>93%</b>	<b>93%</b>

## Full-time Faculty By School and Gender (Fall 2010)

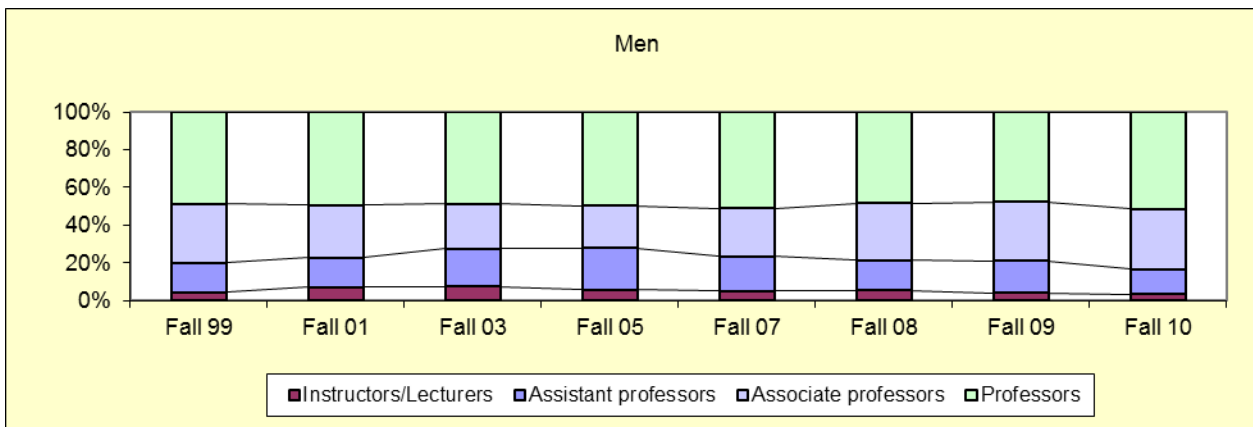
(includes Sabbaticals/Leaves)

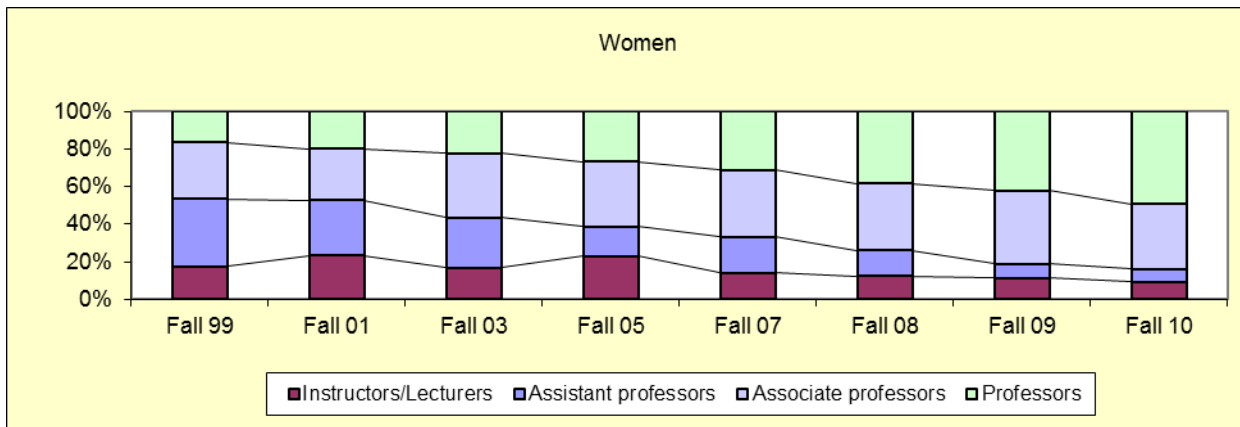
	Arts & Science		Business		Music		Library		Law	
	Male	Female	Male	Female	Male	Female	Male	Female	Male	Female
Professor	30	14	12	4	4	5	0	3	18	21
Associate	20	25	6	2	10	1	2	3	5	2
Assistant	10	5	4	0			0	1	2	1
Lecturer	2	3	1	2	1	3				
Senior	7	0	1	0						
Visiting	3	6	2	0	1	0			2	2
Other									3	0
<b>TOTAL</b>	<b>72</b>	<b>53</b>	<b>26</b>	<b>8</b>	<b>16</b>	<b>9</b>	<b>2</b>	<b>7</b>	<b>30</b>	<b>26</b>





## Full-Time Instructional Faculty by Gender - Historical





Source: IPEDS Faculty Salary Survey

### Student-Faculty Ratio

The table below shows the ratio of full-time equivalent undergraduate students to full-time equivalent instructional faculty for the fall semester.

	Fall 2003	Fall 2004	Fall 2005	Fall 2006	Fall 2007	Fall 2008	Fall 2009	Fall 2010
Student-faculty ratio	11.1 to 1	11.7 to 1	11.7 to 1	11.3 to 1	11.1 to 1	11.6 to 1	11.0 to 1	11.2 to 1
Student FTE*	2118.3	2197.6	2200.2	2235.9	2224.6	2185.1	2126.6	2107.1
Faculty FTE**	191.7	187.4	188.7	197.7	200.0	189.0	193.4	187.7

\*Full-time undergraduates + Part-time undergraduate credit hours / 12

\*\*Full-time faculty excluding sabbatical/leaves and faculty in stand alone grad programs (CSL) + 1/3 Part-time faculty

### Staff

(Including DeLand, Celebration and Law School)

	Fall 2008		Fall 2009		Fall 2010	
	Full-time	Part-time	Full-time	Part-time	Full-time	Part-time
Instruction	231	124	229	119	227	117
Executive	107	1	114	1	105	1
Other Professional	162	13	160	11	170	11
Technical, paraprofessional	7	1	6	0	9	0
Clerical and secretarial	134	17	132	22	130	20
Skilled crafts	4	0	4	0	3	0
Service/Maintenance	119	3	123	4	126	3
<b>Sub-Total</b>	<b>764</b>	<b>159</b>	<b>768</b>	<b>157</b>	<b>770</b>	<b>152</b>
Graduate Assistant	1		1			
<b>TOTAL</b>	<b>924</b>		<b>926</b>		<b>922</b>	

Source: IPEDS: Human Resources Survey

## Presidents of Stetson University

Wendy B. Libby	2009 – Present
H. Douglas Lee	1987 – 2009
Pope A. Duncan	1977 – 1987
John E. Johns	1969 – 1976
Paul F. Geren	1967 – 1969
J. Ollie Edmunds	1948 – 1967
William Sims Allen	1934 – 1947
Lincoln Hulley	1904 – 1934
John F. Forbes	1885 – 1903

## Board of Trustees (2010-2011)

Maureen Breakiron-Evans  
Clearwater, Florida  
(Chair, Business Board)

Cynthia R. Brown  
Ormond Beach, Florida

J. Hyatt Brown  
Ormond Beach, Florida

Emerson Brumback  
Dade City, Florida

S. Sammy Cacciatore, Jr.  
Melbourne, Florida

Nelson Clemmens  
Goshen, Kentucky

Nestor de Armas  
Winter Park, Florida

Bonnie Foreman  
St. Petersburg, Florida

Leo Govoni  
Clearwater, Florida

Kathleen L. Graf  
Jacksonville, Florida  
(Chair, Alumni Board)

Dolly Hand  
Belle Glade, Florida

R. Dean Hollis  
Omaha, Nebraska

Jill Jinks  
Atlanta, Georgia

C. Paul Johnson  
Napa, California

Geoffrey Jollay  
Jacksonville, Florida

Joseph W. Landers, Jr.  
Tallahassee, Florida

L. Patrick Lane  
DeLand, Florida

Gary R. Libby  
Daytona Beach, Florida  
(Chair, Arts and Sciences Board)

Wendy B. Libby  
DeLand, Florida

Christine E. Lynn  
Boca Raton, Florida

Joshua Magidson  
Clearwater, Florida  
(Chair, Law Board)

Earnest W. Murphy  
Daytona Beach, Florida  
(Chair, Music Board)

Jane Edmunds Novak  
Ponte Vedra Beach, Florida

Harlan Paul  
DeLand, Florida  
(Board Chair)

Luis Prats  
Tampa, Florida

Billy Raley  
Lake Mary, Florida

Gary D. Reddick  
The Woodlands, Texas

David B. Rinker  
West Palm Beach, Florida

### **Trustees Emeriti**

Mack Cleveland  
Sanford, Florida

Franklin T. Gaylord  
Eustis, Florida

Mark C. Hollis  
Lakeland, Florida

Richard A. McMahan  
DeLand, Florida

Patricia M. Wilson  
Frostproof, Florida

### **Academic and Administrative Officers**

#### **President's Cabinet**

Wendy B. Libby  
*President*

Elizabeth (Beth) Paul  
*Provost and Vice President for Academic Affairs*

Jeff Altier  
*Director of Athletics*

Joan Beasley  
*Executive Assistant to the President*

Gregory Carroll  
*Vice President for University Marketing*

Linda P. Davis  
*Vice President for University Relations*

Darby Dickerson  
*Vice President & Dean of the College of Law*

George Herbst  
*Vice President for Business & CFO*

Mitchell Reddish  
*Chair of the Faculty Senate*

Deborah Thompson  
*Vice President for Enrollment Management*

Rina Tovar  
*Vice President for Campus Life*

## Dean's Council

Grady Ballenger  
*Dean of the College of Arts and Sciences*

Darby Dickerson  
*Vice President & Dean of the College of Law*

Stuart Michelson  
*Dean of the School of Business Administration*

Jean O. West  
*Dean of the School of Music*

## Academic Departments / Programs (2010-11)

### College of Arts & Sciences

#### Department

American Studies  
Art  
Biology  
Chemistry  
Communication Studies and Theatre Arts  
Counselor Education  
Economics  
English  
Geography & Environmental Science  
History  
Integrative Health Science  
Mathematics and Computer Science  
Modern Languages & Literature  
Philosophy  
Physics  
Political Science  
Psychology  
Religious Studies  
Sociology & Anthropology  
Teacher Education

#### Special Programs

Africana Studies  
Aquatic and Marine Biology  
Biochemistry  
Digital Arts  
Environmental Sciences  
General Studies  
Honors Program  
Humanities  
International Studies  
Journalism  
Latin American Studies  
Russian Studies  
Sport Management  
Sullivan Creative Writing Program  
Women and Gender Studies

#### Chairs

Emily Mieras  
Gary Bolding  
Cindy Bennington  
Ramee Indralingam  
Kenneth McCoy  
Brigid Noonan  
Ranjini Thaver  
Thomas Farrell  
Bruce C. Bradford  
Eric Kurlander  
Michele Skelton  
Will Miles  
Nancy Vosburg  
Ronald Hall  
Kevin Riggs  
William Nylan  
Richard Kindred  
Mitchell Reddish  
Diane Everett  
Glen Epley

#### Chair / Coordinator / Director

Shawnrece Miller  
Melissa Gibbs  
Harry Price  
Nathan Wolek  
Tony Abbott  
John Pearson  
Michael Denner  
Rusty Witek  
T. Wayne Bailey  
Michael W. McFarland  
Robert Sitler  
Michael Denner  
Matt Wilson  
Terri Witek  
Emily Mieras

## **Committees and Special Initiatives**

COSM\*S

Writing Program / First-Year English

GEAC (General Education Assessment)

Graduate Programs

Grant and Fellowships

Institute for Christian Ethics

International Education

Lawson Program

Marchman Program

Phi Beta Kappa

Pre-Engineering

Pre-Health Advisory

Pre-Law Advisory

Stetson Institute for Social Research

Undergraduate Research

Undergraduate Teacher Education

Value Council

## **Chair / Coordinator / Director**

Terry Farrell

Megan O'Neill

Toni Blum

Glen Epley (EDUC), J. Davis (ENGL),

B. Noonan (CSL-Chair)

Karen Kaivola

Dixon Sutherland

Yves Clemmen

Ron Hall

Greg Sapp

David Hill

Kevin Riggs

Michael King

Wayne Bailey

Diane Everett, John K. Schorr

Kimberly Reiter

Carol Corcoran

Dixon Sutherland

## **School of Business Administration**

### **Department**

Accounting

Decision and Information Sciences

Finance

Management & International Business

Marketing

### **Chairs**

Judson P. Stryker

Fred Augustine

James Mallett

Carolyn Mueller

Carolyn Nicholson

### **Special Programs**

Applied Statistics

Director of Graduate Business Programs

Joseph C. Prince Entrepreneurial Program

Roland George Investments Program

Undergraduate Studies

### **Chair / Coordinator / Director**

Fred Augustine

Frank DeZoort

William A. Andrews

Lawrence J. Belcher

Betty Thorne