

## TABLE OF CONTENTS

INTRODUCTION .....	3
GENERAL INFORMATION .....	5
Statement of Institutional Purpose .....	5
I. Educational Mission .....	5
II. Values and Vision .....	5
III. Heritage and Character .....	6
Accreditation.....	7
KEY INDICATORS.....	8
Student Retention Analysis.....	8
Graduation Rates.....	9
Tuition and Fees .....	10
Stetson - Historical .....	10
2009 - 10 Peer Schools Comparison - Tuition and Fees .....	11
Financial Information .....	11
Endowment - Market Value.....	11
Endowment - Peer Schools .....	12
Annual Budget .....	12
Expenses .....	13
Alumni Giving Profile .....	13
Fundraising Report .....	14
Student Financial Aid .....	15
Scholarships/Grants - Undergraduates.....	15
Total Aid and Self-Help* (2009-2010).....	15
ACADEMIC PROGRAMS.....	16
Degrees and Programs Offered (2009-10).....	16
College of Arts and Sciences.....	16
School of Business Administration .....	16
School of Music .....	17
Graduate.....	17
Enrollment by Major - Undergraduate (Fall 2009).....	18
Enrollment by Minor - Undergraduate (Fall 2009) .....	19
Enrollment by Major - Graduate (Fall 2009).....	19
Enrollment by Major - Undergraduate (Historical) .....	20
Degrees Awarded by Major - Undergraduate (Historical) .....	22
Degrees Awarded - by Degree Type (Historical) .....	23
College of Law.....	24
STUDENT INFORMATION .....	25
SAT / ACT Scores .....	25
Range of SAT / ACT Scores.....	25
First Year & Transfer Students .....	26
Student Life Statistics* .....	28
Enrollment of New Students by School.....	28
Enrollment .....	29
Census Headcount, Fall Semester (Historical) .....	29

Census Enrollment by Campus.....	30
Enrollment by Gender (Historical) .....	30
Headcount, Fall Semester (Historical - 1954 to 2008) .....	31
College or School & Gender (Fall 2009).....	32
Class Standing* - Undergraduate (Fall 2009).....	33
Class Standings - Undergraduate (Historical) .....	33
Ethnicity (Fall 2009).....	34
Enrollment By Ethnicity - Undergraduate (Historical).....	34
ALANA Enrollment - Undergraduate (Historical).....	34
International / Non-Resident Students Home country - Undergraduate (Fall 2009).....	35
Number of Foreign Countries represented (Historical) .....	35
Enrollment by Home State - Undergraduate (Fall 2008).....	36
Enrollment by Home State - Undergraduate (Historical) .....	37
Undergraduate Enrollment by Florida County (Historical).....	38
Enrollment by Religious Affiliation - Undergraduate (Fall 2009) .....	38
Age Distribution (Fall 2008) .....	39
Average Senior cumulative GPA's (Historical) .....	40
Class Statistics .....	41
Average Class Size - Undergraduate (Fall 2009) .....	41
Average Class Size - Undergraduate (Historical).....	41
<b>STUDENT LIFE .....</b>	<b>42</b>
Athletics .....	42
Intercollegiate Athletics.....	42
Intramural Program.....	42
Organizations and Clubs.....	42
Social Organizations.....	42
Honorary and Academic Organizations.....	43
Religious Organizations.....	43
Service Organizations.....	43
Campus Life Organizations .....	43
Special Interest Organizations .....	44
<b>ADMINISTRATION, FACULTY AND STAFF .....</b>	<b>45</b>
2009-10 Organizational Chart .....	45
2009-10 Academic Organizational Chart Faculty .....	46
Faculty .....	47
Full-time Faculty - by Rank, Gender, Ethnicity (DeLand Campus, 1999-2007) .....	47
Percent of Full-Time teaching Faculty with Terminal Degrees, DeLand - Historical .....	48
Full-time Faculty By School and Gender (Fall 2009) .....	48
Full-Time Instructional Faculty by Gender - Historical .....	49
Student-Faculty Ratio .....	50
Staff.....	50
Presidents of Stetson University .....	51
Board of Trustees (2009-2010).....	51
Trustees Emeriti.....	52
Academic and Administrative Officers .....	52
Academic Departments / Programs (2009-10) .....	53

# INTRODUCTION

Dear Stetson Community:

Much of the planning and evaluation necessary to improve the effectiveness of the University begins with an understanding of basic institutional facts. The *Stetson University Fact Book* is prepared annually by the Institutional Research Office to provide a better understanding of a variety of issues at Stetson. By sharing and discussing this information, members of the Stetson community are able to more effectively contribute to the planning processes of the University. As you use this information, please let us know how future editions can be improved.

Dr. John M. Tichenor  
Director of Institutional Research



# GENERAL INFORMATION

## Statement of Institutional Purpose Approved by the Board of Trustees, February 4, 2000

### I. Educational Mission

Our mission at Stetson University is to provide an excellent education in a creative community where learning and values meet, and to foster in students the qualities of mind and heart that will prepare them to reach their full potential as informed citizens of local communities and the world.

At Stetson, the art of teaching is practiced through programs solidly grounded in a tradition of liberal learning that stimulates critical thinking, imaginative inquiry, creative expression, and lively intellectual debate. The art of learning is enhanced through small interactive classes, close student-faculty alliances, and collaborative approaches that provide the foundation for rewarding careers and advanced study in selective graduate and professional programs. We embrace diverse methodologies to foster effective communication, information and technological literacy, and aesthetic appreciation. We encourage the development of informed convictions, independent judgment, and lifelong commitments to learning that are characteristic features of the enlightened citizen. In bringing together learning and values, the University encourages all of its members to demonstrate personal integrity; to develop an appreciation for the spiritual dimension of life; to embrace leadership in an increasingly complex, interdependent, and technological world; and to commit to active forms of social responsibility.

### II. Values and Vision

From its founding, Stetson University has affirmed the importance of spiritual life and the quest for truth in its educational mission. The University motto, *Pro Deo et Veritate* (“For God and Truth”), is a symbol of this commitment, and it expresses our determination to integrate the pursuit of a liberal education with the search for meaning in our lives and in our communities.

Chartered as an independent and comprehensive university, Stetson has had an historical relationship with the Christian community and the Baptist denominations. That relationship has shaped our commitment to build an inclusive community. Today, the University includes persons from diverse religious, ethnic, cultural, economic, and intellectual backgrounds. It is thus from varying perspectives that members of the University community have joined together to affirm collectively

- the centrality of knowledge, examined ideas, and independent judgment in the life of an educated person;
- the inherent dignity, worth, and equality of all persons;
- the importance of community in human life;
- the role of religious and spiritual quests for meaning in human experience;
- the value of diverse persons and differing ideas in an educational community;
- the responsibility we share to work toward social justice;
- the necessity for decisions to be guided by ethics and social responsibility; and
- the obligation of individuals and communities to act as responsible stewards of the natural environment.

In our curriculum and co-curricular activities, then, we aim to infuse traditional liberal education with the values of religious and spiritual life, ethical decision-making, human diversity and commonality, gender equity, community service, and environmental responsibility. We aspire to develop distinctive, innovative, and interdisciplinary undergraduate and graduate programs that are centered on vigorous intellectual inquiry, informed by these values, increasingly global in perspective, and worthy of local and national recognition.

### **III. Heritage and Character**

Florida's first private university, Stetson University was founded in 1883 by Henry A. DeLand, a New York philanthropist, as DeLand Academy. In 1887, the Legislature of the State of Florida enacted the Charter of DeLand University as an independent institution of higher learning. The university's name was changed in 1889 to honor John B. Stetson, the nationally-known hat manufacturer who gave generously of his time and means to advance the quality and reputation of the institution, and who served, with Mr. DeLand and others, as a founding trustee of the University. The first charter stated that the objective of the University should be "to promote the general interests of education, and to qualify its students to engage in the learned professions or other employments of society, and to discharge honorably and usefully the various duties of life." Stetson's first president, Dr. John F. Forbes, clearly described the commitment to teaching that has been a hallmark of the University throughout its history:

Buildings, libraries and apparatus are good and give added power, but the vital contact of students with a vigorous and stimulating mind and heart--this is the sine qua non of a successful education...The most important thing is to find men and women of large heart and mind, apt to teach and full of enthusiasm and stimulating power...to develop in the student the habit of independent judgment--of investigating statements and principles for oneself, and thus for oneself discover their truth or falsity.

Today, Stetson University is a non-sectarian, comprehensive, private university composed of individually strong undergraduate programs in various colleges and schools, and a selected group of academically distinctive graduate, professional, and continuing education programs. We seek academically talented individuals with leadership potential and records of personal growth and community service. We promote and support scholarly and creative activity among students, faculty, and staff as a means to enhance learning, teaching, and professional development, and as a contribution to the broader base of knowledge.

## **Accreditation**

- ◆ Accredited by the Commission on Colleges of the Southern Association of Colleges and Schools (1866 Southern Lane, Decatur, Georgia 30033-4097, Telephone (404) 679-4501) to award the Bachelor's, Master's and Specialist in Education degrees in the College of Arts and Sciences; Bachelor's degrees in the School of Music; Bachelor's and Master's degrees in the School of Business Administration; and the Juris Doctor and the Master of Laws degree in the College of Law.
  
- ◆ AACSB International – The Association to Advance Collegiate Schools of Business
- ◆ American Bar Association
- ◆ American Chemical Society
- ◆ Council for Accreditation of Counseling and Related Educational Programs
- ◆ National Association of Schools of Music
- ◆ National Council for Accreditation of Teacher Education

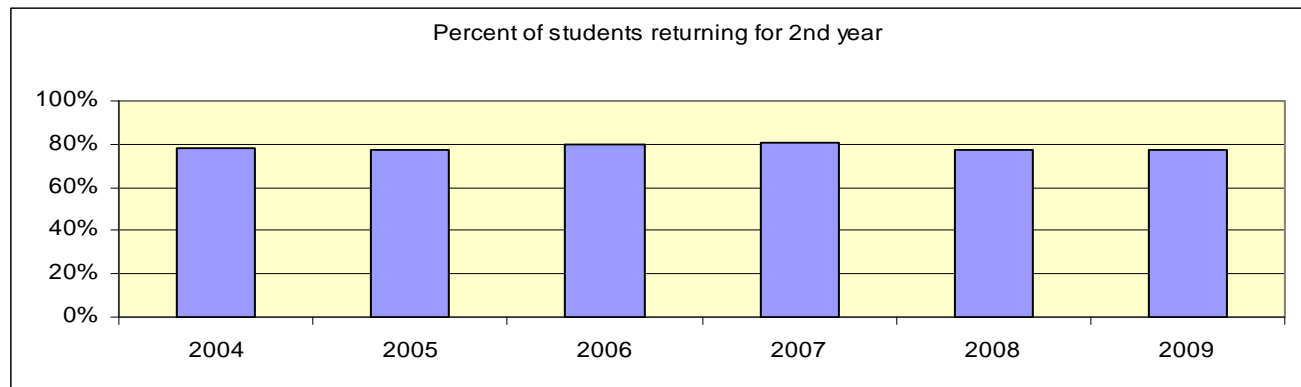
## KEY INDICATORS

### Student Retention Analysis

In the Fall of 2008, Stetson enrolled 588 new, full-time first-time-in-college students and 71 new transfer students. Seventy-seven percent of the new, first-time-in-college students re-enrolled for classes in the Fall of 2009 and 84.5% of the transfer students re-enrolled. The tables and graphs on this page describe longitudinal retention rates and characteristics of returners & non-returners.

#### Percent of New (first-time-in-college) Students Returning for Second Year

Fall 2003 cohort returning in 2004	Fall 2004 cohort returning in 2005	Fall 2005 cohort returning in 2006	Fall 2006 cohort returning in 2007	Fall 2007 cohort returning in 2008	Fall 2008 cohort returning in 2009
78%	77%	80%	81%	77%	77%



#### Characteristics of Returning Students

		% of First Year Students Fall '08 Returning in Fall 2009			% of New Transfers Fall '08 Returning in Fall 2009		
		Initial cohort*	# returning	%	Initial cohort	# returning	%
<b>TOTAL</b>		588	453	77.0%	71	60	84.5%
<b>Gender</b>	Female	347	262	75.5%	44	37	84.1%
	Male	241	191	79.3%	27	23	85.2%
<b>Race</b>	International	15	13	86.7%	5	4	80.0%
	African American	33	21	63.6%	1	1	100.0%
	Latino/a	63	50	79.4%	8	7	87.5%
	Asian American	13	11	84.6%	2	1	50.0%
	Native American	4	3	75.0%	1	1	100.0%
	White	425	328	77.2%	46	39	84.8%
	Unknown, Other	35	27	77.1%	8	7	87.5%
<b>School</b>	Arts & Sciences	275	205	74.5%	35	28	80.0%
	Business	131	107	81.7%	17	17	100.0%
	Music	62	49	79.0%	15	12	80.0%
	Discovery	120	92	76.7%	4	3	75.0%

\*This is the cohort used for IPEDS and other reports.



**Retention Analysis, continued**

**Cumulative GPA (end of Spring 2009) of Fall 2008 new students**

	Returners			Non-Returners		
	Mean	Median	Std. Dev.	Mean	Median	Std. Dev.
First Year	2.86	2.90	.7146	2.10	2.24	.9772
Transfers	2.96	3.05	.6518	2.59	2.61	1.234

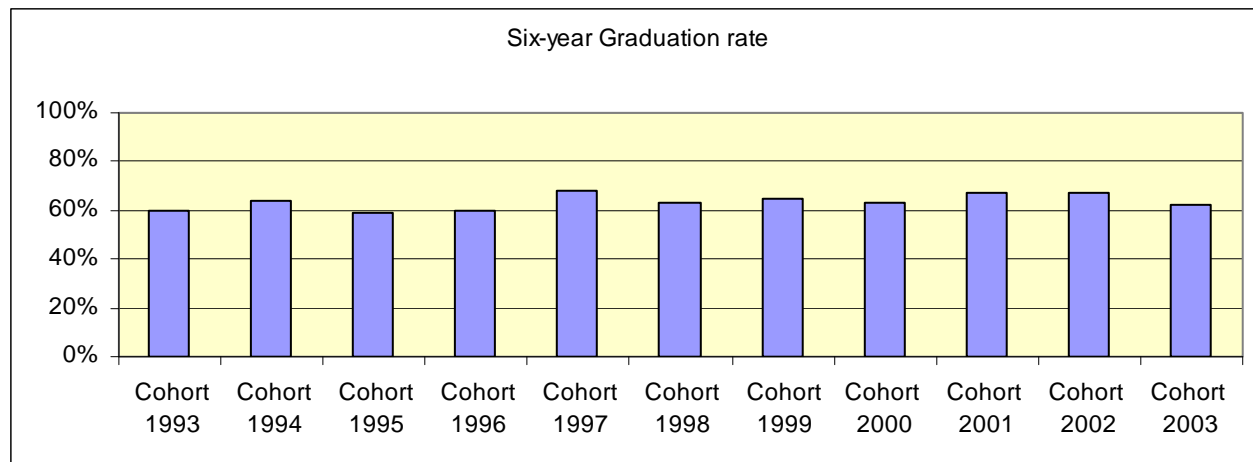
**Average SAT of Fall 2008 new students**

	Returners			Non-Returners		
	Mean	Median	Std. Dev.	Mean	Median	Std. Dev.
First Year	1139	1110	129.007	1095	1070	120.706
Transfers	1037	1050	165.043	1093	1120	191.398

**Average HS GPA of Fall 2008 new students**

	Returners			Non-Returners		
	Mean	Median	Std. Dev.	Mean	Median	Std. Dev.
First Year	3.76	3.77	.5657	3.54	3.52	.4968
Transfers	3.43	3.61	.6564	3.17	3.00	.8558

<b>Graduation Rates</b>	<b>First Year Students</b>			
	<b>4-year</b>	<b>5-year</b>	<b>6-year</b>	
Cohort: 1993	483	49%	58%	60%
Cohort: 1994	474	54%	62%	64%
Cohort: 1995	464	49%	57%	59%
Cohort: 1996	416	51%	60%	60%
Cohort: 1997	504	56%	66%	68%
Cohort: 1998	539	52%	62%	63%
Cohort: 1999	548	57%	64%	65%
Cohort: 2000	502	53%	61%	63%
Cohort: 2001	527	55%	66%	67%
Cohort: 2002	542	55%	65%	67%
Cohort: 2003	523	50%	61%	62%
Cohort: 2004	598	51%	59%	



## Tuition and Fees

### Stetson - Historical

Year	Tuition	Undergraduate		Per Credit Hour Fees	
		Fees	Total	U-Grad	Graduate
1988 - 1989	\$7,370	\$305	\$7,675		\$170
1989 - 1990	\$8,100	\$340	\$8,440		\$185
1990 - 1991	\$8,900	\$385	\$9,285		\$200
1991 - 1992	\$9,610	\$410	\$10,020	\$320	\$215
1992 - 1993	\$10,660	\$450	\$11,110	\$355	\$235
1993 - 1994	\$11,510	\$485	\$11,995	\$385	\$255
1994 - 1995	\$12,315	\$555	\$12,870	\$410	\$275
1995 - 1996	\$13,110	\$590	\$13,700	\$440	\$295
1996 - 1997	\$14,100	\$635	\$14,735	\$470	\$315
1997 - 1998	\$15,100	\$665	\$15,765	\$500	\$350
1998 - 1999	\$15,850	\$800	\$16,650	\$525	\$370
1999 - 2000	\$16,640	\$870	\$17,510	\$550	\$390
2000 - 2001	\$17,475	\$910	\$18,385	\$580	\$410
2001 - 2002	\$18,350	\$960	\$19,310	\$610	\$430
*2002 - 2003	\$19,950	\$1275	\$21,225	\$650	\$430
*2003 - 2004	\$21,300	\$1340	\$22,640	\$685	\$450**
*2004 - 2005	\$22,730	\$1405	\$24,135	\$725	\$475**
*2005 - 2006	\$23,975	\$1475	\$25,450	\$760	\$500**
*2006 - 2007	\$25,450	\$1560	\$27,010	\$795	\$525**
2007 - 2008	\$27,100	\$1680	\$28,780	\$825	\$550-\$575**
2008 - 2009	\$28,456	\$1760	\$30,216	\$870	\$575-600**
2009 - 2010	\$29,880	\$1890	\$31,770	\$914	\$610-625**

\*New Students

\*\*DeLand campus, Celebration Education majors

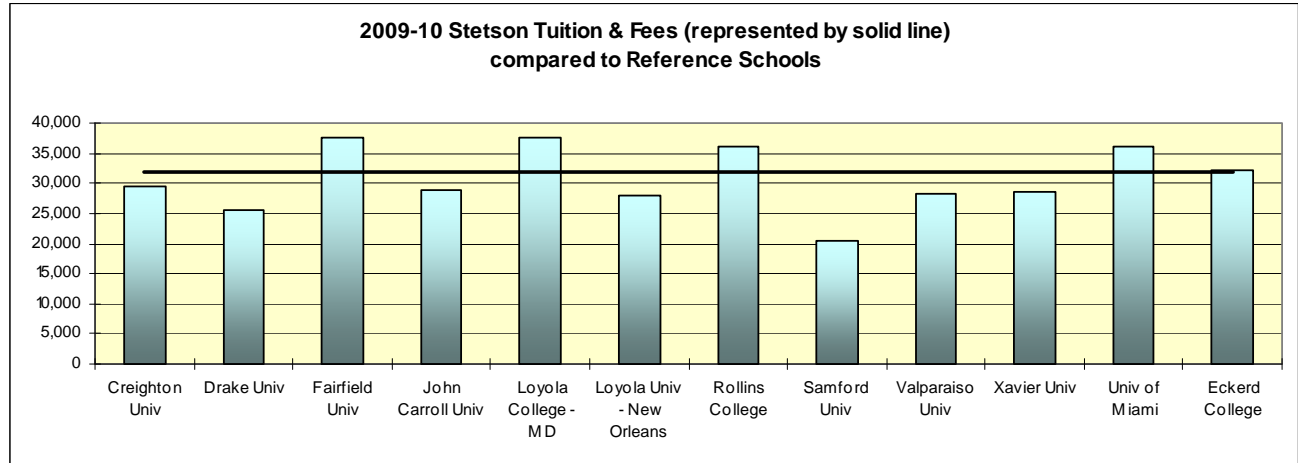
### 2009-10 Graduate tuition - per credit hour

DeLand Campus – A & S Graduate programs	\$610
DeLand Campus – Business programs	\$625
Celebration Campus: Teacher Education	\$610
Counselor Education	\$610
Business Administration	\$725
Law School: JD/MBA (includes books)	\$750

## 2009 - 10 Peer Schools Comparison - Tuition and Fees

Creighton University	29,544	Loyola Univ – New Orleans	28,099
Drake University	25,622	Rollins College	36,220
Fairfield University	37,490	Samford University	20,420
John Carroll University	28,840	Valparaiso University	28,320
Loyola College – MD	37,610	Xavier University	28,570
		Stetson University	31,770
<b>Other</b>			
University of Miami	36,188	Eckerd College	32,104

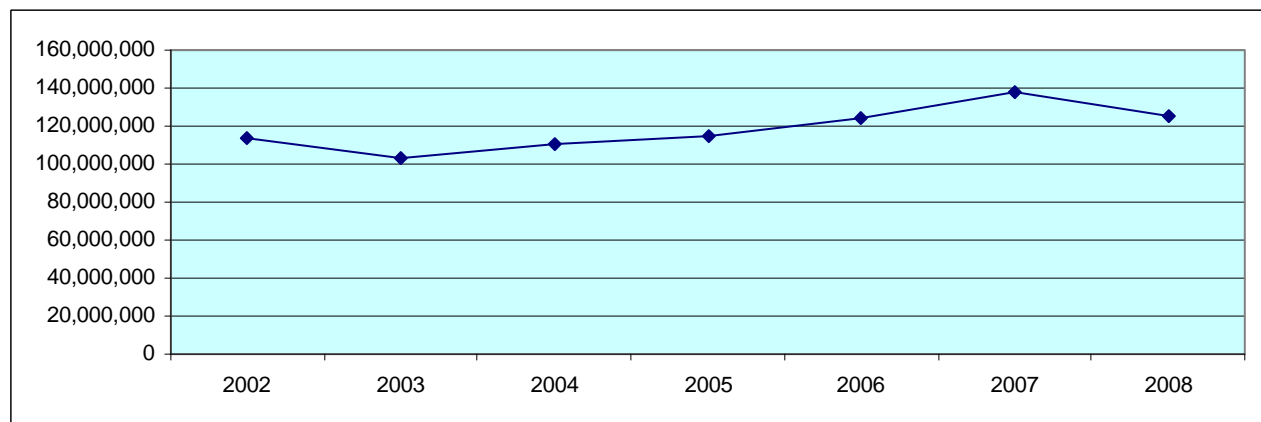
Source: US News



## Financial Information

### Endowment - Market Value

5/31/02	5/31/03	5/31/04	5/31/05	5/31/06	5/31/07	6/30/08
113,679,000	103,268,623	111,045,000	114,753,000	124,428,000	137,557,000	125,079,000



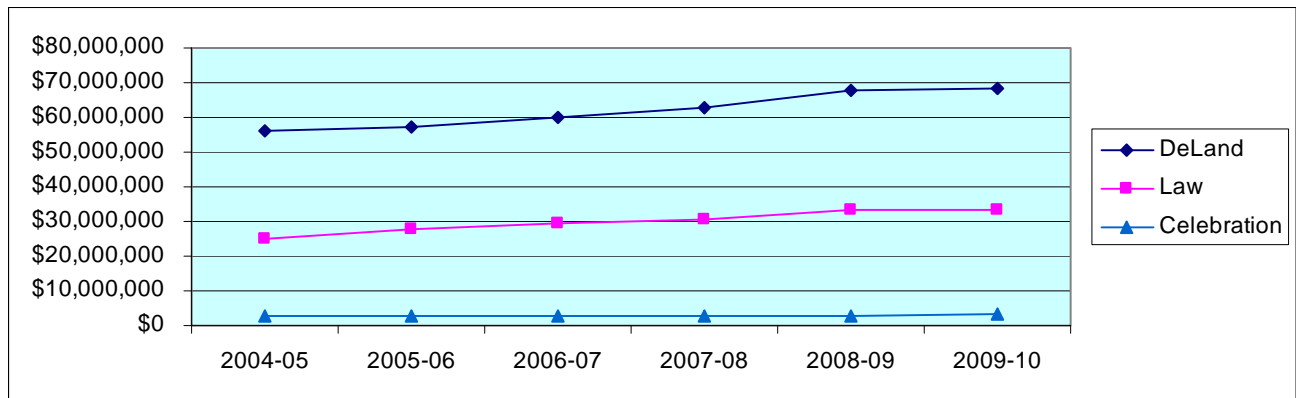
## Endowment - Peer Schools

School	Market Value End FY08	National Rank in Endowment Assets
Creighton University	\$379,207,000	167th
Loyola Univ - New Orleans	\$306,558,000	200th
Rollins College	\$360,365,000	173rd
Samford University	\$306,382,000	201st
Fairfield University	\$262,934,000	218th
Valparaiso University	\$199,045,000	253rd
Loyola College - MD	\$169,362,000	283rd
John Carroll University	\$177,145,000	274th
Drake University	\$141,175,000	311th
<b>Stetson University</b>	<b>\$125,079,000</b>	<b>325th</b>
Xavier University	\$124,523,000	326th

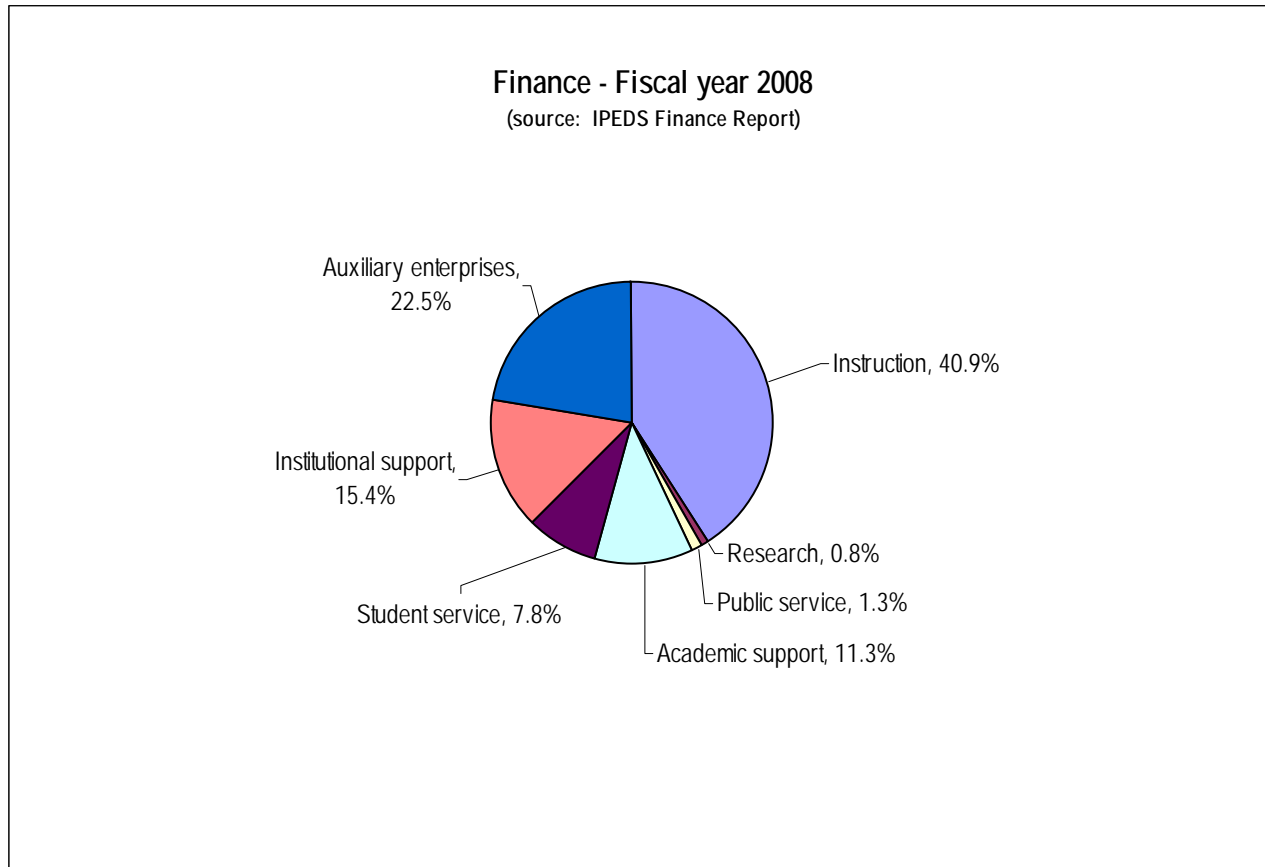
Source: 2008 NACUBO Endowment Study

## Annual Budget

	2004-05	2005-06	2006-07	2007-08	2008-09	2009-10
DeLand	\$56,105,000	\$57,236,000	\$60,099,000	\$62,737,000	\$67,545,000	\$68,560,000
Law	\$25,013,000	\$27,576,000	\$29,625,000	\$30,804,000	\$33,143,000	\$33,506,000
Celebration	\$2,864,000	\$2,691,000	\$2,891,000	\$2,951,000	\$2,874,000	\$3,195,000



## Expenses

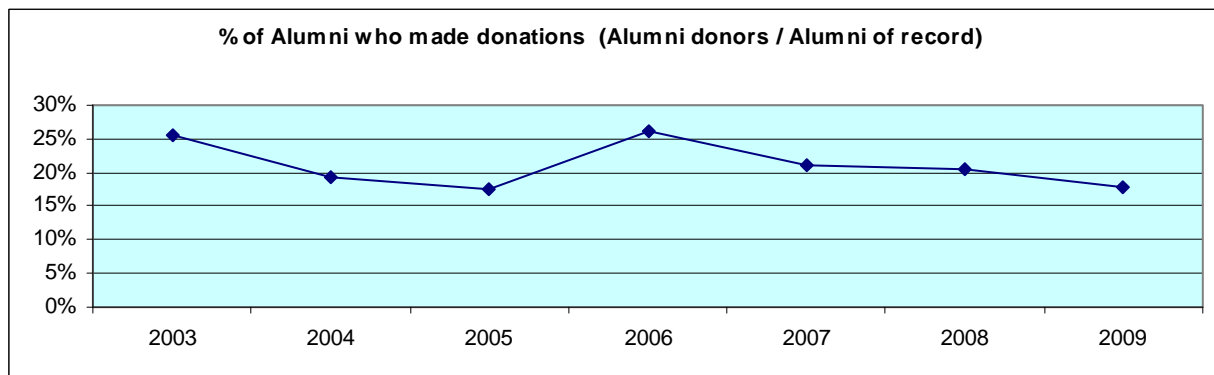


## Alumni Giving Profile

	2003	2004*	2005*	2006*	2007*	2008*	2009*
Alumni of record	14,341	12,422	12,935	8,802	10,147	10,748	11,570
Alumni solicited	9,528	6,742	7,384	8,221	9,574	9,900	10,981
Alumni donors	3,653	2,390	2,274	2,286	2,155	2,208	2,066
Giving percent of record	25.5%	19.2%	17.6%	26.0%	21.2%	20.5%	17.9%

Source: CAE Report

\*undergraduate only



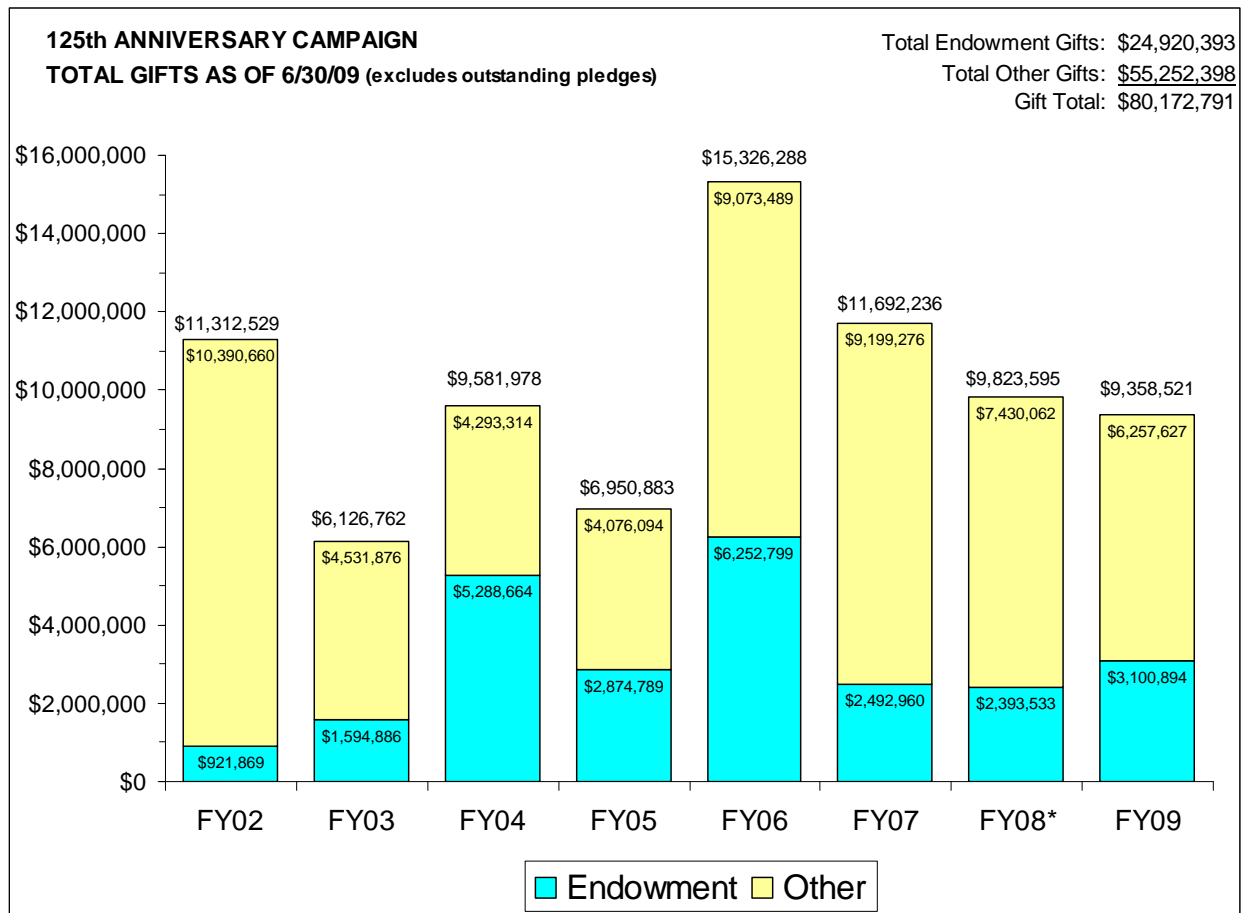
# Fundraising Report

## GIFTS RECEIVED

### Fiscal Year 2008-09

Annual Fund	\$ 2,350,942
Trustee to Trustee Ini.	772,000
Capital	1,847,821
Endowed	3,100,894
Restricted	997,764
<u>Other Unrestricted</u>	<u>289,201</u>
<b>TOTAL</b>	<b>\$ 9,358,521</b>

### 125<sup>th</sup> Anniversary Campaign



## Student Financial Aid

### Scholarships/Grants - Undergraduates

	2008-09		2009-10	
	Scholarships & Grants		Scholarships & Grants	
	Total	Average	Total	Average
Institutional	\$27,732,587	\$13,936	\$28,654,601	\$14,560
Federal Need-based	\$2,513,626	\$5,058	\$3,504,456	\$5,072
Federal Non-need-based	\$33,000	\$1,500	\$33,000	\$1,500
Florida Merit	\$3,353,242	\$3,172	\$3,241,559	\$2,780
Florida Need-based	\$691,872	\$1,738	\$822,257	\$1,772
Florida Non-need-based	\$4,382,274	\$2,827	\$3,796,506	\$2,339
External	\$628,747	\$3,699	\$731,109	\$4,485
<b>TOTAL Scholarships/Grants</b>	<b>\$39,335,347</b>	<b>\$18,767</b>	<b>\$40,783,488</b>	<b>\$19,674</b>

### Total Aid and Self-Help\* (2009-2010)

	First Year Students	Full-time Undergrads
Total financial aid	\$14,497,249	\$57,229,187
Average financial aid package	\$30,520	\$28,067
Total Self-help	\$3,390,001	\$15,069,557
Average self-help	\$9,912	\$10,718

\*Self help includes work-study and loans, excludes PLUS loans.

# ACADEMIC PROGRAMS

## Degrees and Programs Offered (2009-10)

### College of Arts and Sciences

American Studies	B.A.	Latin American Studies	B.A.
Aquatic & Marine Biology*	B.S.	Mathematics	B.S.
Art	B.A.	Modern Languages	
Biology	B.S.	French	B.A.
Biochemistry*	B.S.	German	B.A.
Chemistry	B.S.	Spanish	B.A.
Communication Studies	B.A.	Molecular Biology*	B.S.
Computer Information Systems*	B.A.	Music	B.A.
Computer Science	B.S.	Philosophy	B.A.
Digital Arts	B.A.	Physics	B.S.
Economics	B.A., B.S.	Political Science	B.A.
Elementary Education*	B.A.	Psychology	B.A.
English	B.A.	Religious Studies	B.A.
Environmental Science	B.A., B.S.	Russian Studies	B.A.
Geography	B.S.	Social Science*	B.A.
History	B.A.	Sociology	B.A.
Humanities	B.A.	Sport Management	B.A.
Integrative Health Science	B.S.	Theatre Arts	B.A.
International Studies	B.A.		

\* Minor NOT available

### Minors only

Africana Studies	Education	Russian
Anthropology	Creative Writing	Studio Art
Art History	Journalism	Women and Gender Studies

### Cooperative Programs

Pre-Engineering	Marine Science	Pre-Med
Forestry and Environmental Studies	Pre-Law	

### School of Business Administration

Accounting/Accounting Information Systems	B.B.A.	International Business*	B.B.A.
Economics*	B.B.A.	Management	B.B.A.
Family Business	B.B.A.	Management Information Systems	B.B.A.
Finance	B.B.A.	Marketing	B.B.A.
General Business	B.B.A.		

\* Minor NOT available

### Minors only

Applied Statistics	Business Law	Entrepreneurship
--------------------	--------------	------------------



## School of Music

B.A. Music  
B.A. Digital Arts - Sound Track

B.M.E. Instrumental/General  
B.M.E. Vocal/General

B.M. Performance  
Guitar  
Orchestral Instrument  
Organ  
Piano  
Voice

B.M. Music Technology  
B.M. Theory and Composition  
B.M. Elective Studies in a Specific Outside Field  
B.M. Elective Studies in Business

## Minors

General Music  
(must be added to a non-music degree)

Church Music  
(must be added to a music degree)

## Graduate

Educational Leadership M.Ed.  
English M.A.  
Marital, Couple, & Family  
Counseling/Therapy M.S.  
Mental Health Counseling M.S.

Reading Education M.Ed.  
School Counseling M.S.  
Executive Master of Business  
Administration M.B.A.  
Master of Accountancy M.Acc.  
Master of Business Administration M.B.A.

## Enrollment by Major - Undergraduate (Fall 2009)

### Includes Double Majors

#### College of Arts and Sciences

Major	Frequency	% of A&S Majors	Major	Frequency	% of A&S Majors
American Studies	5	0.4%	German	4	0.3%
Aquatic & Marine Biology	21	1.7%	Health Care Administration	1	0.1%
Art	36	2.9%	Health Science	83	6.7%
Biochemistry	32	2.6%	History	47	3.8%
Biology	105	8.5%	Humanities	12	1.0%
Chemistry	23	1.9%	International Studies	19	1.5%
Communication Studies	69	5.6%	Latin American Studies	2	0.2%
Computer Information Systems	5	0.4%	Mathematics	18	1.5%
Computer Science	28	2.3%	Molecular Biology	9	0.7%
Digital Arts-Art Track	22	1.8%	Music	2	0.2%
Digital Arts-Computer Science	6	0.5%	Philosophy	14	1.1%
Digital Arts-Sound Track	18	1.5%	Physics	22	1.8%
Economics – BA	5	0.4%	Political Science	118	9.5%
Education, Elementary	55	4.4%	Psychology	154	12.5%
Education, Secondary (English)	3	0.2%	Rehabilitative Studies	11	0.9%
Education, Secondary (French)	1	0.1%	Religious Studies	20	1.6%
Education, Secondary (Math)	1	0.1%	Russian Studies	14	1.1%
Education, Secondary (Soc Sci)	6	0.5%	Social Science	4	0.3%
English	88	7.1%	Sociology	23	1.9%
Environmental Science	33	2.7%	Spanish	19	1.5%
French	11	0.9%	Sport Management	47	3.8%
Geography	5	0.4%	Theatre Arts	15	1.2%
			<b>Total A&amp;S Majors</b>	<b>1236</b>	

#### School of Business

Major	Frequency	% of Bus. Majors
Accounting	11	1.5%
Accounting Info Systems	50	7.0%
Economics – BBA	14	2.0%
Family Business	32	4.5%
Finance	147	20.7%
General Business	159	22.4%
General Business - Passport	48	6.8%
International Business	87	12.2%
Management	60	8.4%
Management Info Systems	18	2.5%
Marketing	85	12.0%
<b>Total Business Majors</b>	<b>711</b>	

#### School of Music

Major	Frequency	% of Mus. Majors
BM Outside Field-Business	15	6.3%
BM Outside Field	20	8.3%
Guitar	10	4.2%
Music Ed-Instrumental/Gen	44	18.3%
Music Education-Vocal	25	10.4%
Music Technology	6	2.5%
Orchestral Instrument	51	21.3%
Organ	3	1.3%
Piano	18	7.5%
Theory & Comp-Comp	8	3.3%
Theory & Comp:Theory	4	1.7%
Voice	36	15.0%
<b>Total Music Majors</b>	<b>240</b>	

Discovery (Undeclared)	155
No Major Necessary, visiting, transient, etc.	4

## Enrollment by Minor - Undergraduate (Fall 2009)

Includes Double Minors

	School of Student's Major				School of Student's Major		
	A & S	Business	Music		A & S	Business	Music
Accounting Minor	1	3	0	German	9	7	1
Africana Studies	3	0	0	Health Care Issues	4	0	0
American Studies	4	0	0	Health Science	5	0	0
Anthropology	2	0	0	History	15	4	1
Applied Statistics	0	4	0	Humanities	2	0	0
Art	10	3	0	International Studies	7	2	0
Art History	12	0	0	Journalism	17	1	0
Biology	4	0	0	Latin American Studies	2	0	0
Business Law	10	36	0	Management	10	15	0
Chemistry	7	0	0	Management Info Systems	4	26	0
Communication Studies	5	5	0	Marketing	9	10	0
Computer Science	0	1	0	Mathematics	8	2	0
Digital Arts	6	5	0	Music Minor	27	5	0
E-Business Technology	1	0	0	Philosophy	5	1	0
Economics	1	3	0	Physics	2	1	0
Education	18	2	1	Political Science	4	3	0
English	7	2	2	Psychology	37	6	0
English – Creative Writing	15	1	0	Religious Studies	12	2	1
Environmental Science	2	0	0	Russian	4	1	0
Entrepreneurship	1	12	0	Russian Studies	1	0	0
Family Business	2	5	0	Sociology	12	5	0
Finance	4	6	0	Spanish	42	22	2
French	11	5	2	Sport Management	7	18	0
General Business Admin	21	0	0	Theatre Arts	9	1	0
Geography	2	0	0	Women & Gender Studies	12	0	0
				<b>TOTALS</b>	<b>415</b>	<b>225</b>	<b>10</b>

## Enrollment by Major - Graduate (Fall 2009)

Major	#	%	Major	#	%
Curriculum and Instruction	1	.2%	Master of Accountancy	41	8.5%
Educational Leadership	35	7.3%	Master of Business Admin	188	39.2%
English	9	1.9%	Mental Health Counseling	30	6.3%
Exceptional Education	1	.2%	No Major Necessary*	47	9.8%
Law (MBA/JD)	45	9.4%	Reading Education	35	7.3%
Marital, Couple & Fam CSL/Ther	25	5.2%	School Counseling	23	4.8%
			<b>TOTALS</b>	<b>480</b>	

\*26 Arts & Sciences, 21 Business

## Enrollment by Major - Undergraduate (Historical)

Includes Double Majors

<b>Arts &amp; Sciences</b>	<b>2002</b>	<b>2003</b>	<b>2004</b>	<b>2005</b>	<b>2006</b>	<b>2007</b>	<b>2008</b>	<b>2009</b>
American Studies	5	5	8	12	8	5	3	5
Aquatic & Marine Biology	13	16	20	19	23	20	23	21
Art	35	34	36	37	35	32	26	36
Biochemistry	20	15	17	23	25	18	29	32
Biology	95	105	98	94	108	106	105	105
Biology - Molecular	4	3	6	8	8	12	9	9
Biology – special	2							
Chemistry	14	12	16	12	16	13	17	23
Communication Studies	69	57	73	78	68	72	55	69
Computer Info Systems	4	2	3	3	2	3	2	5
Computer Science	26	18	13	24	18	27	24	28
Digital Arts	63	51	44	28	28	22	39	46
Economics	10	7	5	5	5	11	12	5
Education - Elementary	89	99	92	88	80	77	79	55
Education – General	1	17					1	
Education - Secondary	29	21	15	21	12	19	15	11
English	67	83	97	90	94	78	73	88
Environmental Science	21	17	13	20	17	21	23	33
Foreign Language - French	6	8	6	7	10	9	9	11
Foreign Language - German	5	6	7	12	8	6	9	4
Foreign Language - Spanish	17	17	17	22	28	26	23	19
Geography	2	2			1	1	2	5
Health Care Administration								1
History	34	42	39	36	42	37	35	47
Humanities	10	8	9	12	15	13	18	12
Integ Health - Health Science	39	35	47	45	53	55	55	83
Integ Health -Rehab Studies	18	18	17	19	23	21	18	11
International Studies	18	18	29	27	15	19	24	19
International Theatre						1		
Latin American Studies	3	3	2	3	2	1	4	2
Mathematics	10	15	19	31	22	23	22	18
Med Tech	1		1	2	2	2		
Music Lib. Arts	3	9	7	9	7		4	2
Philosophy	11	14	14	22	20	12	14	14
Physics	16	15	14	15	20	23	18	22
Political Science	108	113	106	116	131	117	116	118
Psychology	146	139	143	139	137	150	150	154
Religious Studies	29	28	34	33	20	28	26	20
Russian Studies	16	13	13	10	9	10	14	14
SES-Athletic Training	5	2						
SES-Exercise Science	7	3						
Social Science	2	1	7	8	4	5	5	4
Sociology	37	42	38	39	30	26	23	23
Sport Admin/Mgmt	35	42	48	46	44	51	40	47
Theatre Arts	14	17	21	22	26	18	13	15
<b>Total</b>	<b>1159</b>	<b>1172</b>	<b>1194</b>	<b>1237</b>	<b>1216</b>	<b>1190</b>	<b>1177</b>	<b>1236</b>

## Enrollment by Major - Undergraduate (Historical), continued

<b>Business</b>	<b>2002</b>	<b>2003</b>	<b>2004</b>	<b>2005</b>	<b>2006</b>	<b>2007</b>	<b>2008</b>	<b>2009</b>
Accounting								11
Accounting Info Systems	55	59	60	75	80	69	63	50
Business Economics	14	14	9	7	6	2	4	14
Computer Info Systems	17	4						
Electronic Business Tech	40	37	37	24	14	11	5	
Family Business			5	19	18	24	27	32
Finance	102	107	93	91	103	155	164	147
General Business	209	216	199	217	241	214	221	207
International Business	77	63	65	82	80	101	96	87
Management	72	81	89	88	79	67	58	60
Management Info Systems						14	13	18
Marketing	119	107	110	99	111	101	88	85
<b>Total</b>	<b>705</b>	<b>688</b>	<b>667</b>	<b>702</b>	<b>732</b>	<b>758</b>	<b>739</b>	<b>711</b>

<b>Music</b>	<b>2002</b>	<b>2003</b>	<b>2004</b>	<b>2005</b>	<b>2006</b>	<b>2007</b>	<b>2008</b>	<b>2009</b>
Bach of Music w/Bus Adm	13	15	5	7	14	19	19	15
Bach of Music w/outside Field	20	19	27	23	17	19	20	20
Bachelor of Music w/Dig Arts	5	4	3	2	5	1		
Music Lib. Arts (See A & S)								
Music Education	69	70	79	80	85	73	74	69
Music Technology						5	5	6
Musical Theater			1	1				
Performance:								
Guitar	8	7	8	8	6	9	8	10
Orchestral Instrument	21	26	24	30	28	39	43	51
Piano/Organ	9	17	17	10	13	13		
Organ							4	3
Piano							15	18
Voice	36	34	26	30	31	36	42	36
Theory & Composition	13	9	10	11	12	14	17	12
Undeclared (Music)								
<b>Total</b>	<b>194</b>	<b>201</b>	<b>200</b>	<b>202</b>	<b>211</b>	<b>228</b>	<b>247</b>	<b>240</b>

No major necessary, visiting transient			12	4	12	8	9	4
Discovery	220	193	226	287	233	244	235	155

## Degrees Awarded by Major - Undergraduate (Historical)

(includes second majors)

<b>Arts &amp; Sciences</b>	<b>7/1/02 to 6/30/03</b>	<b>7/1/03 to 6/30/04</b>	<b>7/1/04 to 6/30/05</b>	<b>7/1/05 to 6/30/06</b>	<b>7/1/06 to 6/30/07</b>	<b>7/1/07 to 6/30/08</b>	<b>7/1/08 to 6/30/09</b>
American Studies	3		3	2	3	2	4
Art	8	5	7	9	11	9	4
Biology	24	26	25	21	17	21	16
Biology, Aquatic			4	1	2	3	3
Biology, Molecular	1	1	3	2		2	3
Bio-Chemistry	11	1	3	4	5	4	3
Chemistry	3	2	1	2	2	2	3
Communications	21	16	19	12	21	24	11
Communications, Other							
Computer Information Systems				1		1	2
Computer Science	7	6	1	3	3	3	3
Digital Arts	20	11	15	8	5	7	4
Economics	3	2	2	1	1	3	4
English	11	20	21	21	24	28	18
Environmental Science / Studies	4	7	3	6	3	5	5
Modern Language: French	1	2	3	1	2	1	3
Modern Language: German	1		1	3	3	3	4
Modern Language: Spanish	6	5	12	3	9	6	7
Geography		2					3
Health Sciences	10	3	17	10	11	24	14
History	5	8	10	17	10	11	9
Humanities	4	3	1	1	6	7	6
International Studies/Sciences	4	2	6	7	4	4	7
International Theatre - Honors						1	
Latin American Studies		1	1		1	1	1
Linguistics, Comparative Study		1					
Mathematics	3	4	2	6	3	3	6
Music – Liberal Arts			4		5	1	
Philosophy	4	4	6	6	8	5	7
Physics	1	5	2	2	2	7	7
Political Science	20	24	18	21	26	28	22
Psychology	31	34	27	39	29	28	42
Religious Studies	9	6	12	12	8	9	10
Russian Studies	2	2	6	4	2	2	6
SES: Athletic Trng, Sports Med	2	2					
SES: Ex Sci & Mvmt Therapy	3	3	5	5	4		1
Sport Management	10	10	6	17	10	8	9
Social Sciences	2	4	2	3	1	4	1
Sociology	10	13	8	15	9	8	7
Teacher Educ – Elem	18	28	21	27	15	21	26
Teacher Educ - Secondary						2	4
Teacher Educ – General			1	1			2
Theatre Arts	1	3	5	5	8	4	2
<b>Total</b>	<b>263</b>	<b>266</b>	<b>283</b>	<b>298</b>	<b>273</b>	<b>302</b>	<b>289</b>

### Degrees Awarded by Major - Undergraduate (Historical), continued

<b>Business</b>	<b>7/1/02 to 6/30/03</b>	<b>7/1/03 to 6/30/04</b>	<b>7/1/04 to 6/30/05</b>	<b>7/1/05 to 6/30/06</b>	<b>7/1/06 to 6/30/07</b>	<b>7/1/07 to 6/30/08</b>	<b>7/1/08 to 6/30/09</b>
Accounting	10	20	16	14	21	21	22
Business Administration	30	36	33	35	43	65	47
Business Economics	1	4	3	3			2
Electronic Business Tech	10	14	15	7	4	6	1
Family Business				5	2	3	6
Finance	30	36	32	30	25	43	49
Information Resources (CIS)	10	3					
International Business	18	15	9	14	13	17	10
Management	29	26	28	22	31	18	14
Management Info Systems						2	10
Marketing	43	26	39	28	29	31	35
<b>Total Business</b>	<b>181</b>	<b>180</b>	<b>175</b>	<b>158</b>	<b>168</b>	<b>206</b>	<b>196</b>

<b>Music</b>							
Music Perf – Piano & Organ		3	3	2	6	3	2
Music Perf – Orch Instrument	1	2	4	4	8	3	6
Music Perf – Viola, Guitar	2	1	1	2	1	1	2
Music Perf – Voice	6	6	4	1	7	3	5
Music – Other	12	9	12	16	6	16	
BM w/ Outside Field							7
Music Technology							1
Music Theory & Composition	2	2	1	6	1	1	3
Teacher Educ – Music	19	10	5	10	27	5	5
<b>Total Music</b>	<b>42</b>	<b>33</b>	<b>30</b>	<b>41</b>	<b>56</b>	<b>32</b>	<b>31</b>

<b>TOTAL</b>	<b>486</b>	<b>479</b>	<b>488</b>	<b>497</b>	<b>497</b>	<b>540</b>	<b>516</b>
--------------	------------	------------	------------	------------	------------	------------	------------

### Degrees Awarded - by Degree Type (Historical)

	<b>2002-03</b>	<b>2003-04</b>	<b>2004-05</b>	<b>2005-06</b>	<b>2006-07</b>	<b>2007-08</b>	<b>2008-09</b>
<b>BACHELORS</b>	<b>486</b>	<b>479</b>	<b>488</b>	<b>497</b>	<b>497</b>	<b>540</b>	<b>516</b>
Arts & Sciences	263	266	283	298	274	302	289
Business	181	180	175	158	168	206	196
Music	42	33	30	41	55	32	31
<b>MASTERS</b>	<b>118</b>	<b>182</b>	<b>181</b>	<b>223</b>	<b>190</b>	<b>241</b>	<b>239</b>
Arts & Sciences	53	78	76	96	74	99	114
Business	65	104	105	127	116	142	125
<b>LAW</b>	<b>255</b>	<b>284</b>	<b>254</b>	<b>304</b>	<b>362</b>	<b>313</b>	<b>333</b>

## College of Law

### Law School Tuition & Fees – Full-time

2002-03	2003-04	2004-05	2005-06	2006-07	2007-08	2008-09	2009-10
\$22,965	\$24,104	\$24,940	\$26,280	\$27,860	\$29,240	\$30,700	\$31,640

### Law School Tuition – Full-time Summer Session

2002	2003	2004	2005	2006	2007	2008	2009
\$5,695	\$5,980	\$6,200	\$6,550	\$6,950	\$7,298	\$7,660	\$7,890

### Law School Key Facts

- Ranked among the nation's top 100 law schools by *U.S. News & World Report*
- Ranked No. 1 for trial advocacy and No. 5 for legal writing by *U.S. News & World Report*
- Individual attention to student needs
- Nationally acclaimed faculty who excel in their fields
- State-of-the-art library and classrooms
- Seven courtrooms
- J.D. Certificates of Concentration in Advocacy, Elder Law and International Law
- J.D./M.B.A. Certificate of Concentration in Eco-Asset Management
- J.D./M.B.A., J.D./M.D. and J.D./M.P.H. dual-degree programs
- LL.M. in both International Law and Elder Law
- One of few law schools to share space with a working court, Florida's Second District Court of Appeal
- Centers for Excellence in Advocacy, Elder Law, Higher Education Law and Policy, and International Law
- Home to the National Clearinghouse for Science, Technology and the Law, and Institutes for Biodiversity Law and Policy and Caribbean Law and Policy
- Home to three academic journals, including the *Stetson Law Review*
- Honors program for top-ranked students
- National and world champion advocacy teams
- Vibrant campus life with diverse student organizations, interscholastic activities and competitions
- Study abroad programs in Argentina, Cayman Islands, China, Germany, Great Britain, the Netherlands and Spain
- The first law school in Florida to require pro bono service by students and faculty
- Excellent career development services
- Campuses in beautiful Gulfport and Tampa, Florida

For more information on the College of Law, visit [www.law.stetson.edu](http://www.law.stetson.edu).



# STUDENT INFORMATION

## SAT / ACT Scores

Fall 2009 First Year Students

	75th Percentile	25th Percentile	Average
SAT Math	600	490	545
SAT Reading	600	500	552
SAT Total	1200	1030	1116
ACT Math	26	19	22.5
ACT English	26	20	23.4
ACT Composite	26	21	23.2
High School GPA	4.10	3.39	3.76

90% submitted SAT scores  
 62% submitted ACT scores  
 100% submitted High School GPA

## Range of SAT / ACT Scores

Fall 2009 First Year Students

<u>SAT</u>	<u>Reading</u>	<u>Math</u>	<u>ACT</u>	<u>Composite</u>	<u>English</u>	<u>Math</u>
700 - 800	4.9%	3.3%	30 - 36	6.7%	9.4%	6.1%
600 - 699	23.1%	23.9%	24 - 29	36.7%	38.7%	35.5%
500 - 599	48.3%	45.9%	18 - 23	50.8%	41.6%	45.8%
400 - 499	22.6%	24.6%	12 - 17	5.8%	10.0%	12.6%
Under 400	1.1%	2.2%	6 - 11	--	.3%	--

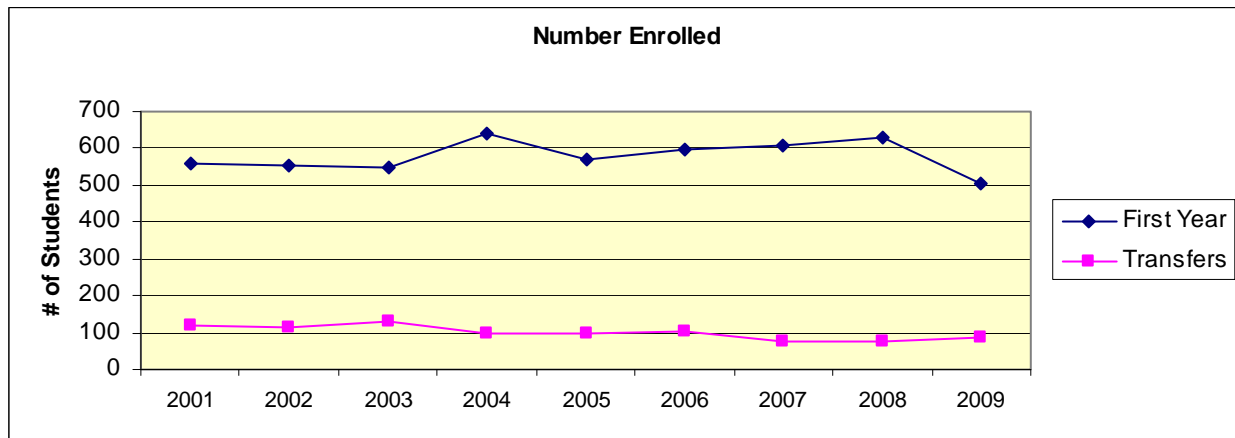
## First Year & Transfer Students

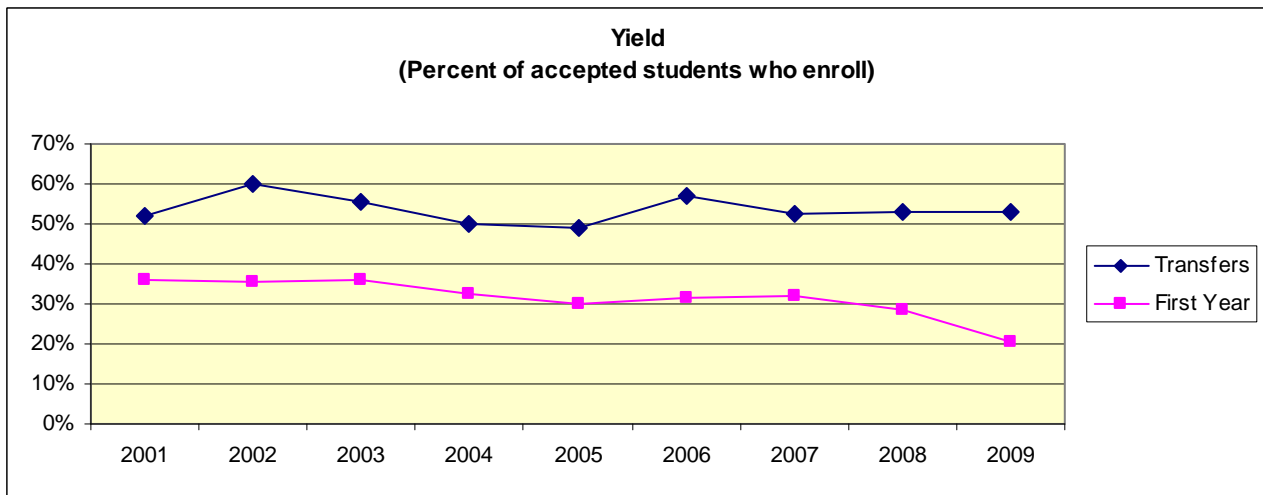
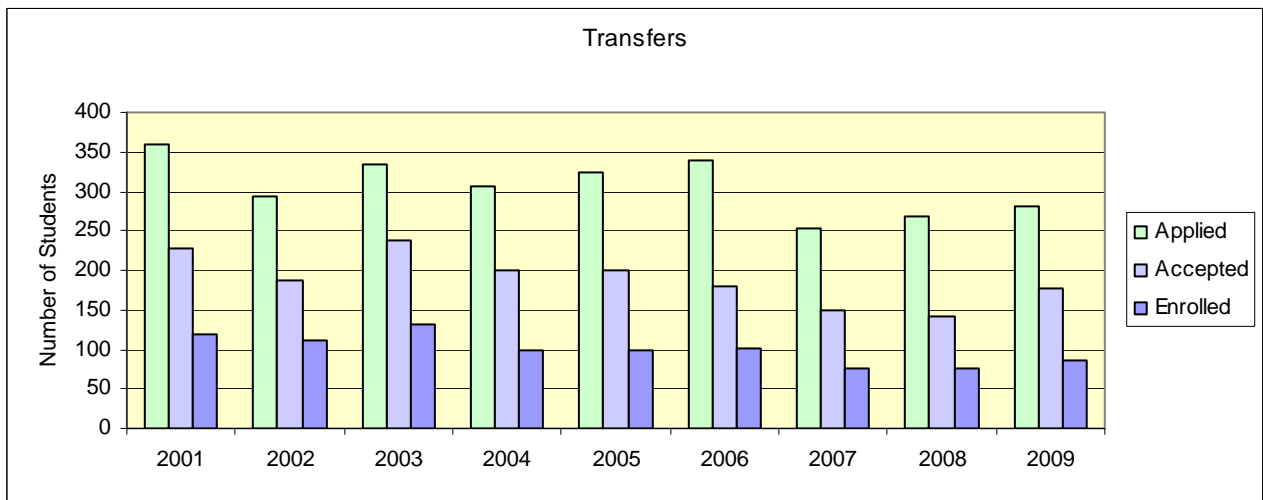
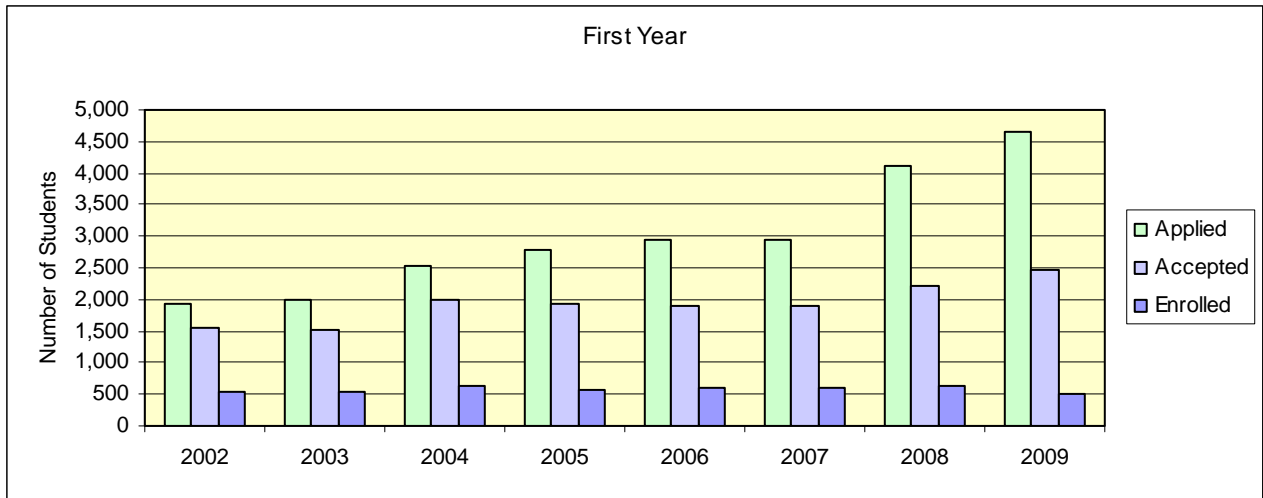
(Source: Admission's Office "Entering Class Profile")\*

<b>First Year</b>	<b>2001</b>	<b>2002</b>	<b>2003</b>	<b>2004</b>	<b>2005</b>	<b>2006</b>	<b>2007</b>	<b>2008</b>	<b>2009</b>
Inquired**	24,542	26,778	34,558	30,530	27,630	26,778	31,013	42,464	46,822
Applied	1,942	1,918	1,992	2,540	2,782	2,931	2,947	4,119	4,640
Accepted	1,545	1,538	1,527	1,980	1,918	1,902	1,890	2,216	2,479
Enrolled									
Men	244	225	244	262	246	240	256	261	230
Women	313	328	302	379	325	357	350	367	275
<b>TOTAL</b>	<b>557</b>	<b>553</b>	<b>546</b>	<b>641</b>	<b>571</b>	<b>597</b>	<b>606</b>	<b>628</b>	<b>505</b>
Yield rate for accepted students	36.1%	36.0%	35.8%	32.4%	29.8%	31.4%	32.1%	28.3%	20.4%
<b>Transfers</b>									
Inquired	1,815	1,924	1,421	1,024	1,029	673	591	1,014	1,504
Applied	359	294	334	306	325	338	254	268	280
Accepted	228	185	237	200	200	179	150	142	176
Enrolled									
Men	47	36	52	37	40	42	31	29	36
Women	72	78	79	63	58	60	45	48	49
<b>TOTAL</b>	<b>119</b>	<b>114</b>	<b>131</b>	<b>100</b>	<b>98</b>	<b>102</b>	<b>76</b>	<b>77</b>	<b>85</b>
Yield rate for accepted students	52.2%	61.6%	55.3%	50.0%	49.0%	57.0%	52.6%	53.0%	53.0%
<b>Special</b>	<b>20</b>	<b>17</b>	<b>19</b>	<b>21</b>	<b>18</b>	<b>14</b>	<b>10</b>	<b>7</b>	<b>10</b>
<b>TOTAL</b>	<b>696</b>	<b>684</b>	<b>696</b>	<b>762</b>	<b>687</b>	<b>713</b>	<b>692</b>	<b>712</b>	<b>600</b>

\*This report is based upon the Admission's Office "Entering Class Profile" prepared in August for the first university faculty meeting each year. Final statistics for matriculating students are prepared by the Institutional Research Office in September for reporting purposes and may differ based on the criteria for determining "new" students and the time of the download.

\*\* "Inquired" includes mailing lists purchased from College Board and other sources.





## Student Life Statistics\*

<b>Fall 2009</b>	First-time, first year students	Undergraduates
Percent from out of state	15%	17%
Percent of men who join fraternities	26%	26%
Percent of women who join sororities	23%	22%
Percent of who live on campus	86%	69%
Percent who live off campus or commute	14%	31%
Percent of students 25 and older	0	6%
Average of full-time students	18	20
Average of all students (full and part-time)	18	21

\*CDS Methodology

## Enrollment of New Students by School

	<b>Fall 2004</b>	<b>Fall 2005</b>	<b>Fall 2006</b>	<b>Fall 2007</b>	<b>Fall 2008</b>	<b>Fall 2009</b>
First Year A & S	290	260	253	278	304	297
First Year Business	136	139	127	120	131	95
First Year Music	48	55	58	72	62	48
First Year Discovery	162	117	157	125	120	62
<b>Total First Year Freshmen</b>	<b>636</b>	<b>571</b>	<b>595</b>	<b>595</b>	<b>617</b>	<b>502</b>
New Transfers A & S	56	56	55	38	35	45
New Transfers Business	19	27	30	16	17	23
New Transfers Music	12	10	11	18	15	13
New Transfers Discovery	8	6	6	2	4	3
<b>Total New Transfers</b>	<b>95</b>	<b>99</b>	<b>102</b>	<b>74</b>	<b>71</b>	<b>84</b>
Total New A & S	346	316	308	316	339	342
Total New Business	155	166	157	136	148	118
Total New Music	60	65	69	90	77	61
Total New Discovery	170	123	163	127	124	65
<b>Total New Students</b>	<b>731</b>	<b>670</b>	<b>697</b>	<b>669</b>	<b>688</b>	<b>586</b>

### Notes about these students counts:

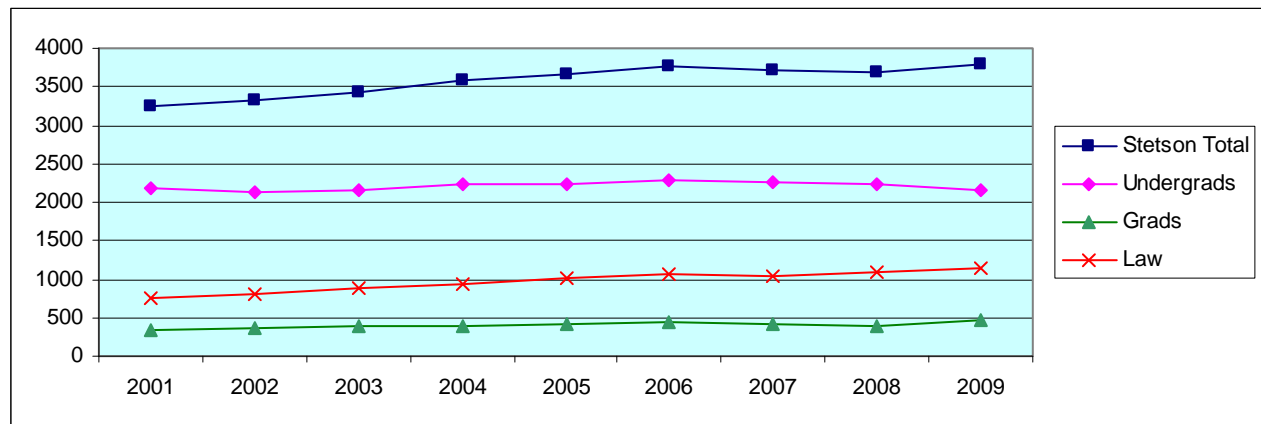
- 1) They include only students who were in the fall census counts -- i.e., they do not include students who paid deposits to attend, but did not make it to the census count.
- 2) They do not include visiting students or transfer transient students which are reported as "new students" in some Admissions reports -- i.e., the counts include only students who we expect to return in subsequent terms.
- 3) They include only DeLand students -- i.e., no Celebration Passport undergrads.

## Enrollment

### Census Headcount, Fall Semester (Historical)

	<b><u>2001</u></b>	<b><u>2002</u></b>	<b><u>2003</u></b>	<b><u>2004</u></b>	<b><u>2005</u></b>	<b><u>2006</u></b>	<b><u>2007</u></b>	<b><u>2008</u></b>	<b><u>2009</u></b>
<b><u>Full-time</u></b>									
Undergraduates	2063	2063	2070	2163	2160	2185	2176	2143	2079
Graduates	61	81	93	123	141	146	203*	191*	216*
Post-Bacc	<u>6</u>	<u>5</u>	<u>4</u>	<u>6</u>	<u>8</u>	<u>14</u>	<u>6</u>	<u>6</u>	<u>13</u>
DeLand/Celebration	2130	2149	2167	2292	2309	2345	2385	2340	2308
College of Law	<u>727</u>	<u>711</u>	<u>736</u>	<u>784</u>	<u>825</u>	<u>853</u>	<u>821</u>	<u>828</u>	<u>950</u>
<b>University (Full-time)</b>	<b>2857</b>	<b>2860</b>	<b>2903</b>	<b>3076</b>	<b>3134</b>	<b>3198</b>	<b>3206</b>	<b>3168</b>	<b>3258</b>
<b><u>Part-time</u></b>									
Undergraduates	111	79	91	67	74	88	88	79	83
Graduates	227	250	259	247	245	255	186*	173*	217*
Post-Bacc	<u>37</u>	<u>30</u>	<u>27</u>	<u>26</u>	<u>21</u>	<u>17</u>	<u>31</u>	<u>23</u>	<u>34</u>
DeLand/Celebration	375	359	377	340	340	360	305	275	334
College of Law	<u>23</u>	<u>99</u>	<u>159</u>	<u>161</u>	<u>191</u>	<u>204</u>	<u>210</u>	<u>253</u>	<u>198</u>
<b>University (Part-time)</b>	<b>398</b>	<b>458</b>	<b>536</b>	<b>501</b>	<b>531</b>	<b>564</b>	<b>515</b>	<b>528</b>	<b>532</b>
<b><u>Total</u></b>									
Undergraduates	2174	2142	2161	2230	2234	2273	2264	2222	2162
Graduates	288	331	352	370	386	401	389	364	433
Post-Bacc	<u>43</u>	<u>35</u>	<u>31</u>	<u>32</u>	<u>29</u>	<u>31</u>	<u>37</u>	<u>29</u>	<u>47</u>
DeLand/Celebration	2505	2508	2544	2632	2649	2705	2690	2615	2642
College of Law	<u>750</u>	<u>810</u>	<u>895</u>	<u>945</u>	<u>1016</u>	<u>1057</u>	<u>1031</u>	<u>1081</u>	<u>1148</u>
<b>TOTAL University</b>	<b>3255</b>	<b>3318</b>	<b>3439</b>	<b>3577</b>	<b>3665</b>	<b>3762</b>	<b>3721</b>	<b>3696</b>	<b>3790</b>

\*Counseling students with 6 credit hours are full-time



### Census Enrollment by Campus

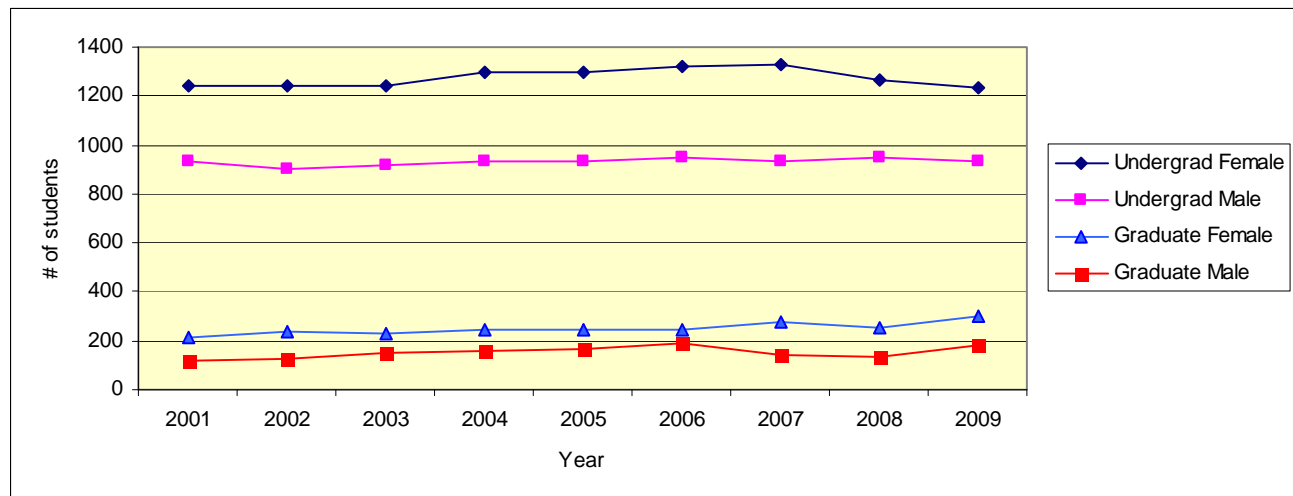
Undergraduates	Fall 2005		Fall 2006		Fall 2007		Fall 2008		Fall 2009	
	FT	PT	FT	PT	FT	PT	FT	PT	FT	PT
DeLand	2150	71	2163	79	2152	76	2116	67	2044	70
Celebration	<u>10</u>	<u>3</u>	<u>22</u>	<u>9</u>	<u>24</u>	<u>12</u>	<u>27</u>	<u>12</u>	<u>35</u>	<u>13</u>
<b>Undergraduate Total</b>	<b>2160</b>	<b>74</b>	<b>2185</b>	<b>88</b>	<b>2176</b>	<b>88</b>	<b>2143</b>	<b>79</b>	<b>2079</b>	<b>83</b>

Graduates	Fall 2005		Fall 2006		Fall 2007		Fall 2008		Fall 2009	
	FT	PT	FT	PT	FT	PT	FT	PT	FT	PT
DeLand Graduates	74	141	73	150	121	90	120	67	112	105
DeLand P-Bacc	<u>3</u>	<u>18</u>	<u>12</u>	<u>15</u>	<u>5</u>	<u>28</u>	<u>4</u>	<u>14</u>	<u>11</u>	<u>25</u>
DeLand Total	77	159	85	165	126	118	124	81	123	130
Celebration Graduates	67	61	71	63	81	34	71	59	81	67
Celebration P-Bacc	<u>5</u>	<u>3</u>	<u>2</u>	<u>2</u>	<u>1</u>	<u>3</u>	<u>2</u>	<u>9</u>	<u>2</u>	<u>9</u>
Celebration Total	72	64	73	65	82	37	73	68	83	76
MBA/JD	<u>0</u>	<u>43</u>	<u>2</u>	<u>42</u>	<u>1</u>	<u>62</u>	<u>0</u>	<u>47</u>	1	44
On-line MAcc									<u>22</u>	<u>1</u>
<b>Graduate Total</b>	<b><u>149</u></b>	<b><u>266</u></b>	<b><u>160</u></b>	<b><u>272</u></b>	<b><u>209</u></b>	<b><u>217</u></b>	<b><u>197</u></b>	<b><u>196</u></b>	<b><u>229</u></b>	<b><u>251</u></b>

### Enrollment by Gender (Historical)

		2001	2002	2003	2004	2005	2006	2007	2008	2009
Undergraduate	Male	931	900	920	930	937	949	935	953	931
	Female	1243	1242	1241	1300	1297	1324	1329	1269	1231
	<b>Total</b>	<b>2174</b>	<b>2142</b>	<b>2161</b>	<b>2230</b>	<b>2234</b>	<b>2273</b>	<b>2264</b>	<b>2222</b>	<b>2162</b>

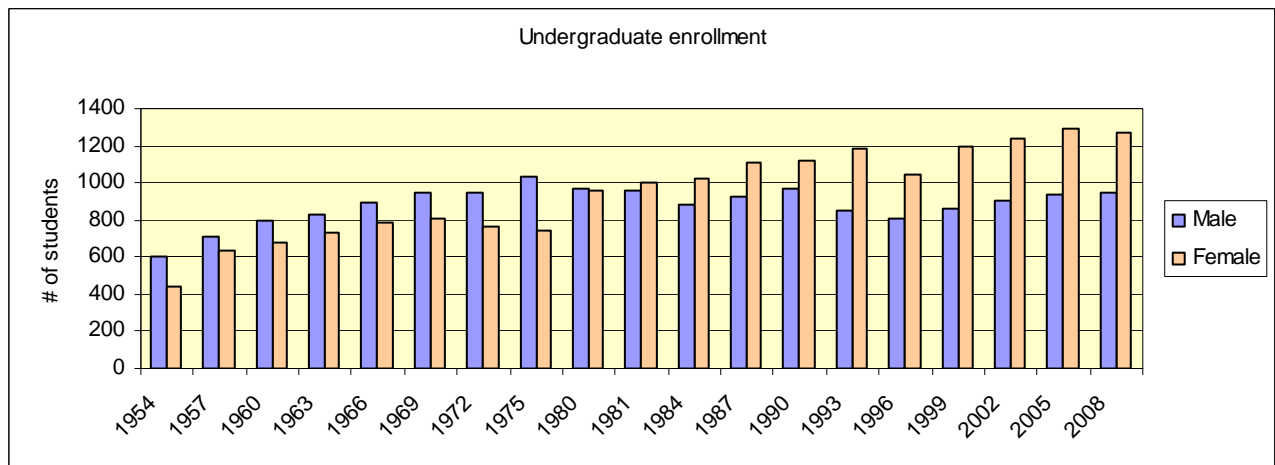
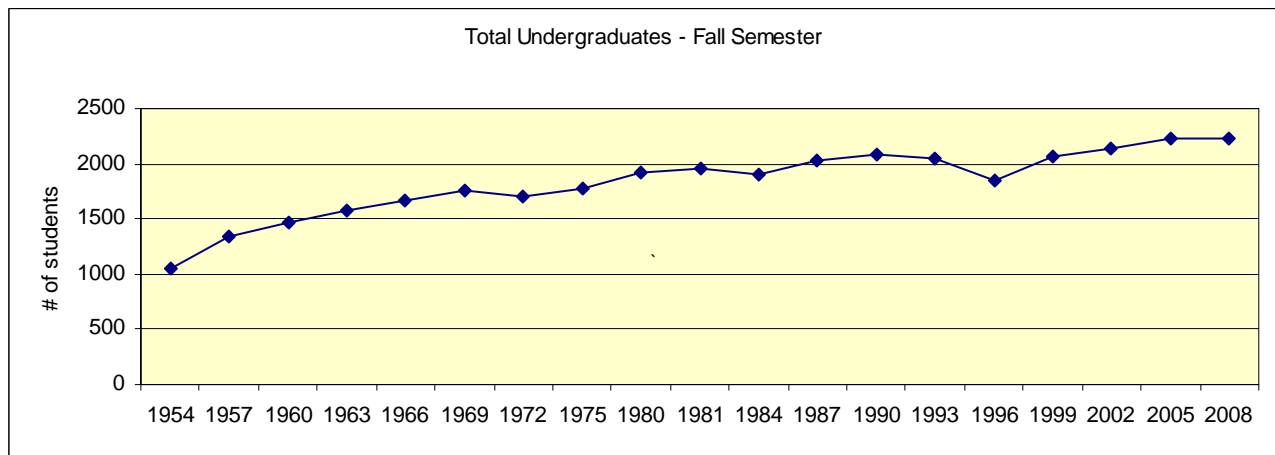
Graduate (excl Law)	Male	118	125	151	159	168	188	146	138	183
	Female	213	241	232	243	247	244	280	255	297
	<b>Total</b>	<b>331</b>	<b>366</b>	<b>383</b>	<b>402</b>	<b>415</b>	<b>432</b>	<b>426</b>	<b>393</b>	<b>480</b>



### Headcount, Fall Semester (Historical - 1954 to 2008)

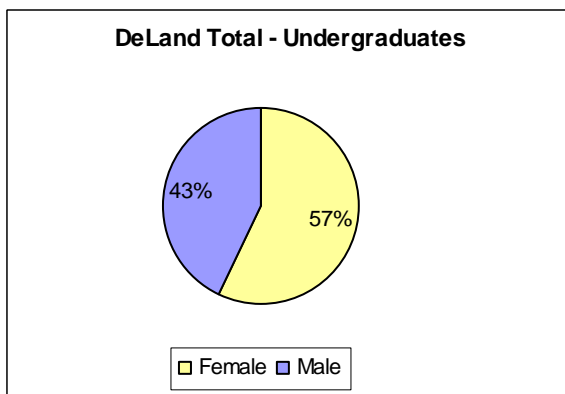
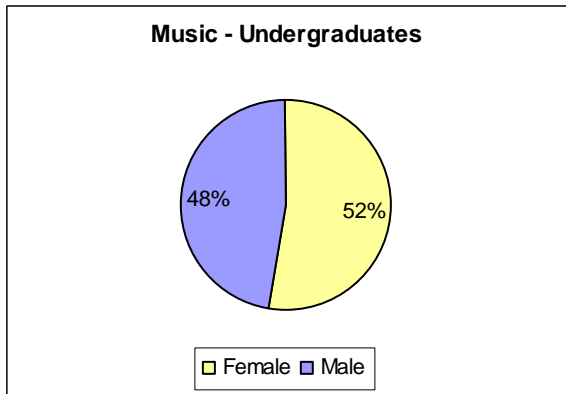
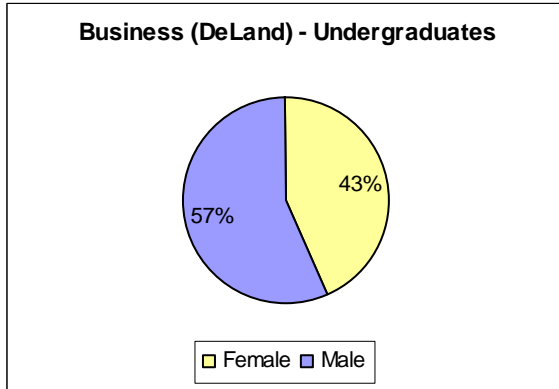
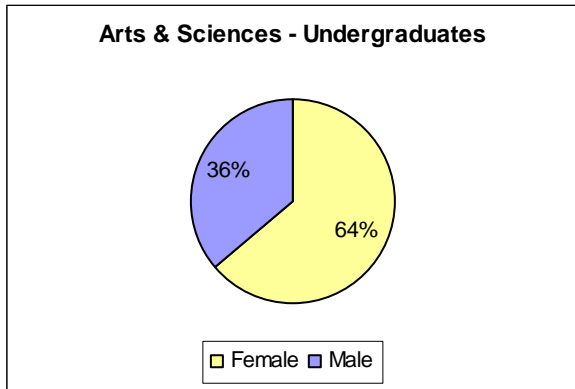
Undergraduate	Male		Female		TOTAL
	#	%	#	%	
Fall 1954	598	57%	444	43%	1042
Fall 1957	711	53%	634	47%	1345
Fall 1960	792	54%	676	46%	1468
Fall 1963	831	53%	737	47%	1568
Fall 1966	893	53%	782	47%	1675
Fall 1969	944	54%	806	46%	1750
Fall 1972	946	55%	763	45%	1709
Fall 1975	1035	58%	748	42%	1783
Fall 1980	972	50%	955	50%	1927
Fall 1981	954	49%	997	51%	1951
Fall 1984	882	46%	1021	54%	1903
Fall 1987	927	46%	1110	54%	2037
Fall 1990	973	47%	1118	53%	2091
Fall 1993	855	42%	1190	58%	2045
Fall 1996	804	43%	1047	57%	1851
Fall 1999	864	42%	1198	58%	2062
Fall 2002	900	42%	1242	58%	2142
Fall 2005	937	42%	1297	58%	2234
Fall 2008	953	43%	1269	57%	2222

Source: HEGIS and IPEDS Enrollment Reports



**College or School & Gender (Fall 2009)**

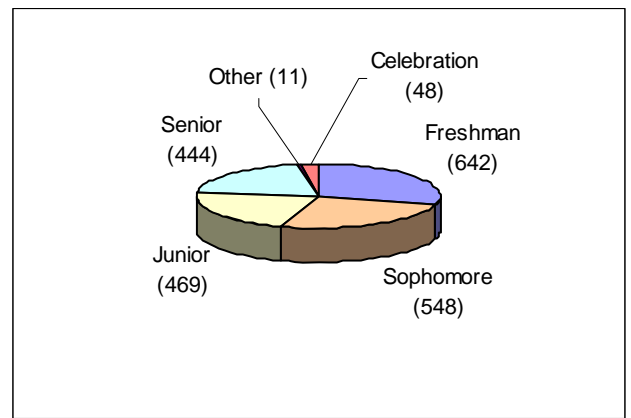
	<b>Female</b>	<b>Male</b>	<b>Total</b>
<b>Arts &amp; Sciences</b>			
Undergraduate	816	459	1275
DeLand Graduate	106	18	124
Celebration Graduate	53	8	61
<b>A &amp; S Total</b>	<b>975</b>	<b>485</b>	<b>1460</b>
<b>Business</b>			
Undergraduate	265	345	610
Passport Undergrad	30	18	48
DeLand Graduate	53	76	129
Celebration Graduate	47	51	98
Law-MBA Graduate	21	24	45
MAcc On-line	17	6	23
<b>Total</b>	<b>433</b>	<b>520</b>	<b>953</b>
<b>Music</b>			
Undergraduate only	120	109	229
<b>Law</b>	<b>604</b>	<b>544</b>	<b>1148</b>
<b>Stetson Total</b>	<b>2132</b>	<b>1658</b>	<b>3790</b>





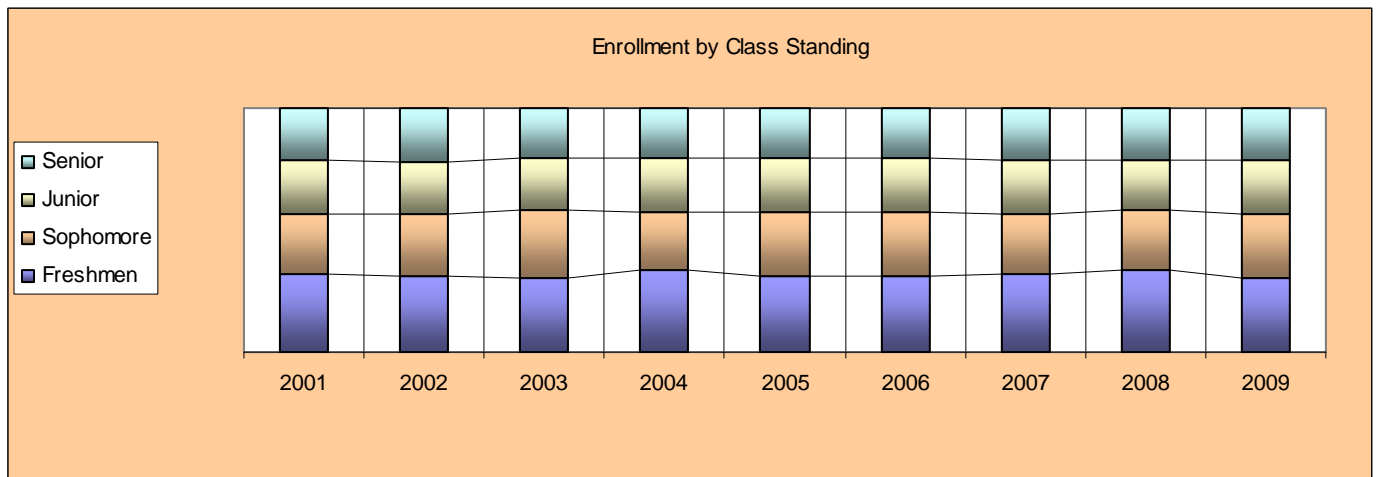
### Class Standing\* - Undergraduate (Fall 2009)

Headcount	Female	Male	Total
Freshmen	342	300	642
Sophomore	312	236	548
Junior	280	189	469
Senior	259	185	444
Other	8	3	11
Celebration	30	18	48
<b>TOTAL</b>	<b>1231</b>	<b>931</b>	<b>2162</b>



### Class Standings - Undergraduate (Historical)

	2001	2002	2003	2004	2005	2006	2007	2008	2009
Freshmen	690	659	657	738	697	693	715	725	642
Sophomore	528	544	594	539	579	590	534	540	548
Junior	480	460	455	481	482	489	491	442	469
Senior	468	469	438	459	462	460	480	469	444
Other	8	10	17	13	14	10	8	7	11
Celebration						31	36	39	48



### \*Class Standing Definitions:

Freshmen	0 – 26 hours earned
Sophomore	27 – 59 hours earned
Junior	60 – 89 hours earned
Senior	90+ hours earned

## Ethnicity (Fall 2009)

	Undergraduate		Graduate & Post Bacc		Law	
	#	%	#	%	#	%
African American	124	5.7%	33	6.9%	69	6.4%
Native American	9	.4%	4	.8%	9	.8%
Asian	41	1.9%	10	2.1%	36	3.3%
Hispanic / Latino	235	10.9%	33	6.9%	85	7.9%
White (US Resid)	1563	72.3%	298	62.1%	770	71.2%
Intl / Res. Alien	78	3.6%	27	5.6%	18	1.7%
Other	65	3.0%	7	1.5%	26	2.4%
Unknown	47	2.2%	68	14.2%	68	6.3%

## Enrollment By Ethnicity - Undergraduate (Historical)

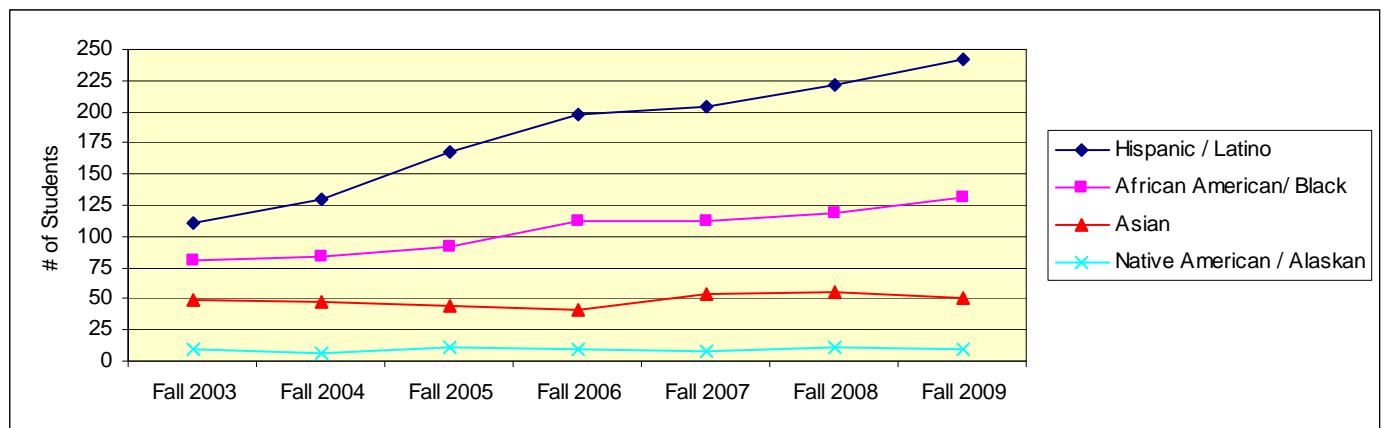
	Fall 2003	Fall 2004	Fall 2005	Fall 2006	Fall 2007	Fall 2008	Fall 2009
African American	77	80	89	109	105	110	124
Native American	9	7	11	10	8	11	9
Asian	45	39	39	38	48	50	41
Hispanic / Latino	104	124	158	193	199	217	235
White (US Resid)	1800	1802	1730	1716	1687	1639	1563
Intl / Non-Res. Alien	74	79	81	62	76	70	78
Other*	52	99	126	145	49	44	65
Unknown*					92	81	47
Total	2161	2230	2234	2273	2264	2222	2162

\*Other and Unknown combined prior to Fall 2007

## ALANA Enrollment - Undergraduate (Historical)

(Ethnicity of all students, including non-residents, who do not consider themselves White/Caucasian)

	Fall 2003	Fall 2004	Fall 2005	Fall 2006	Fall 2007	Fall 2008	Fall 2009
Hispanic / Latino	111	130	167	198	204	222	242
African American / Black	81	84	92	112	113	119	132
Asian	49	47	44	41	54	55	50
Native American / Alaskan	9	7	11	10	8	11	9

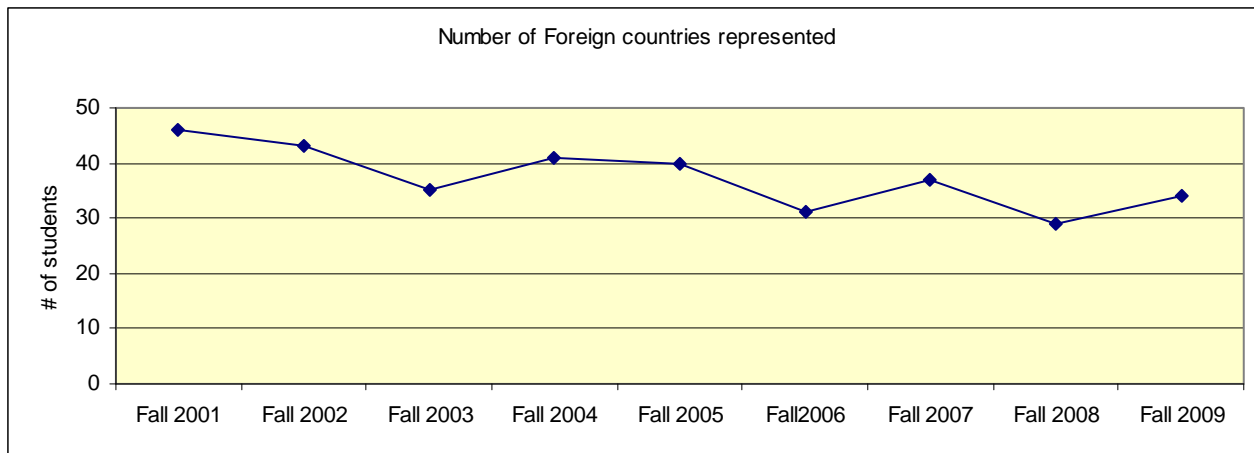


## International / Non-Resident Students Home country - Undergraduate (Fall 2009)

Jamaica	7	Norway	2	Italy	1
United Kingdom	7	Slovenia	2	Mexico	1
Canada	6	Spain	2	Micronesia	1
China	5	Uruguay	2	Netherlands	1
Germany	5	Austria	1	Poland	1
Saudi Arabia	5	Bahamas	1	Russia	1
Australia	4	Belarus	1	Slovakia	1
Bermuda	3	Brazil	1	South Korea	1
Japan	3	Bulgaria	1	Taiwan	1
Dominican Republic	2	Haiti	1	Venezuela	1
France	2	Ireland	1	Vietnam	1
India	2				

## Number of Foreign Countries represented (Historical)

2001-02	2002-03	2003-04	2004-05	2005-06	2006-07	2007-08	2008-09	2009-10
46	43	35	41	40	31	37	29	34



# Enrollment by Home State - Fall 2009 (Undergraduates)



## Enrollment by Home State - Undergraduate (Historical)

	2001	2002	2003	2004	2005	2006	2007	2008	2009
Alabama	6	9	2			2	1	2	2
Alaska	1	1			1	1	1	1	
Arizona	2	2	3	1	1	3	2		1
Arkansas	2	2	2	1		3	2	1	1
California	5	4	4	8	12	9	9	6	8
Colorado	1	4	6	12	11	11	8	7	3
Connecticut	24	33	24	29	31	37	40	35	28
Delaware			1	1	1	2	1	2	2
Florida	1657	1594	1665	1705	1672	1776	1757	1770	1721
Georgia	52	51	39	36	33	27	30	36	36
Hawaii									
Idaho	1	2							
Illinois	16	11	16	13	15	13	13	12	12
Indiana	6	9	3	3	5	6	4	4	3
Iowa		2			1	2	2	2	1
Kansas	5	6	3	1		1			
Kentucky	4	6	5	6	10	7	3	4	2
Louisiana	2	4	3	3	1	2	3	5	5
Maine	2	9	9	11	9	18	17	11	10
Maryland	14	18	17	21	23	17	19	15	17
Massachusetts	45	44	41	52	53	54	47	39	33
Michigan	2	3	2	4	5	6	7	4	4
Minnesota	4	4	3	7	8	4	5	3	3
Mississippi	3	2	3	1	1	3	4	2	2
Missouri	9	8	6	9	7	5	5	6	5
Montana									1
Nebraska		1		3	1	1			1
Nevada						1	1		
New Hampshire	13	16	21	20	21	17	17	15	12
New Jersey	14	21	23	26	28	25	26	21	19
New Mexico	1	2	2	2	2	3	2	3	
New York	47	47	30	36	41	32	36	42	31
North Carolina	10	11	6	7	11	11	11	8	10
North Dakota	1								
Ohio	14	14	11	10	12	9	16	12	12
Oklahoma	5	4	3	3	3				
Oregon	1	2	2	2	2	1			
Pennsylvania	22	31	22	21	26	21	20	24	18
Rhode Island	4	8	7	6	3	4	6	6	5
South Carolina	12	13	15	12	12	5	3	3	5
South Dakota	1	1			1	1	1		
Tennessee	11	14	18	16	12	6	7	9	10
Texas	16	17	11	16	17	16	16	13	7
Utah	3	3	2	2	1	1	3	3	1
Vermont	3	2	6	5	3	3	2	4	5
Virginia	17	19	14	16	19	18	16	8	9
Washington	1	2	1	2	1	1			
West Virginia	2	1	2	2	2	3	6	3	2
Wisconsin	5	6	7	5	6	4	1	1	1
Wyoming				1					2
Total	2066	2063	2060	2137	2124	2192	2170	2142	2050

## Undergraduate Enrollment by Florida County (Historical)

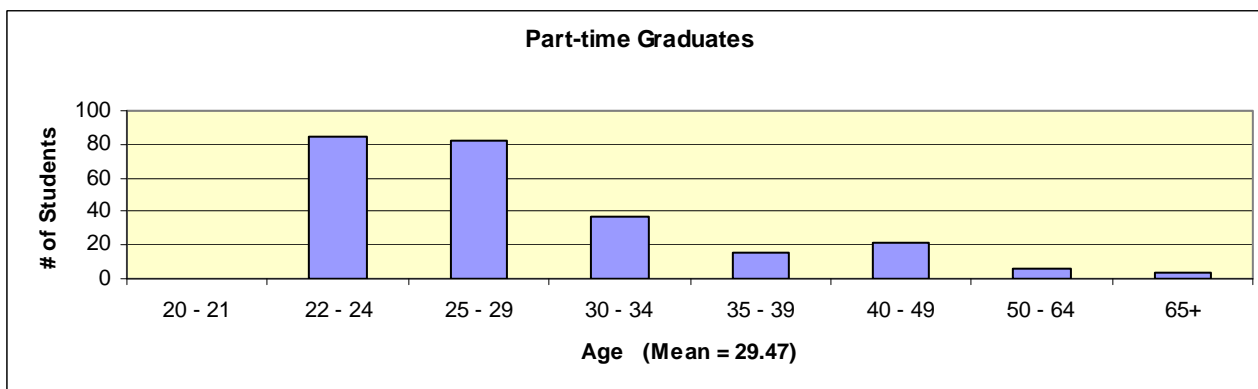
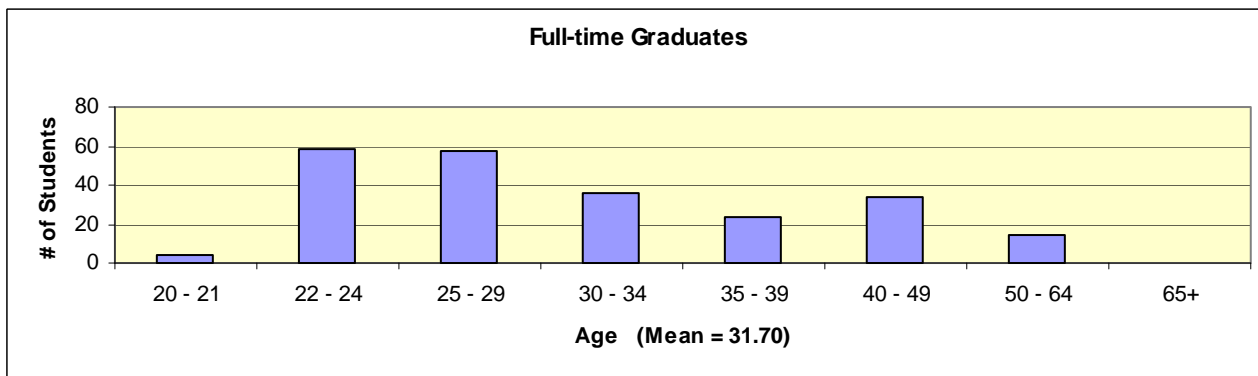
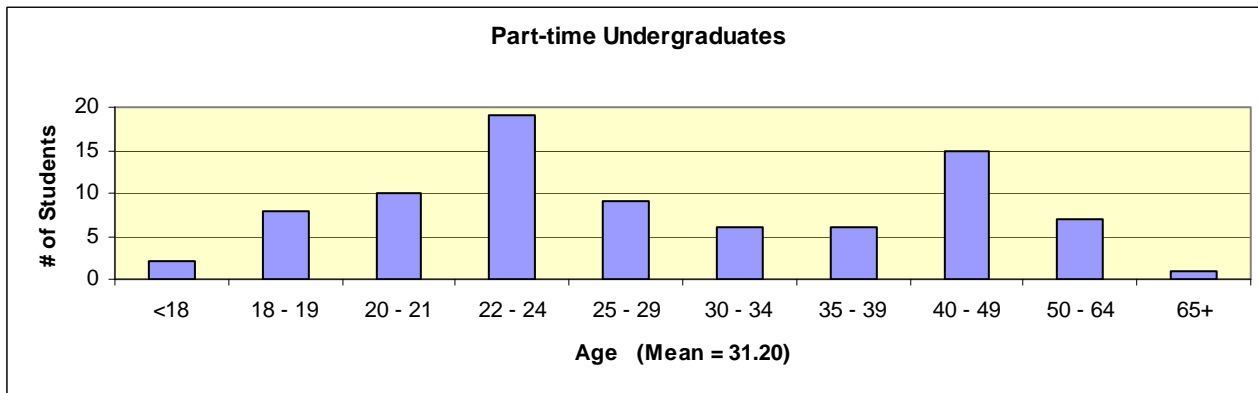
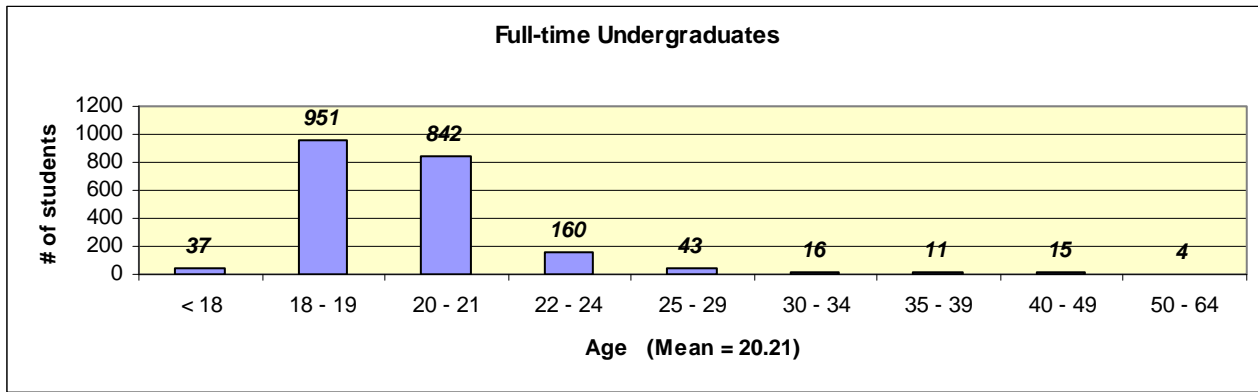
	2005	2006	2007	2008	2009
Alachua	17	15	10	15	10
Bay	7	11	10	10	13
Brevard	91	91	76	63	66
Broward	58	62	62	64	57
Charlotte	15	13	13	20	20
Citrus	9	10	16	8	8
Clay	13	15	18	22	17
Collier	34	37	42	30	29
Columbia	2	1	0	2	1
Dade	50	39	37	42	44
Desoto	3	5	4	2	3
Dixie	1	0	0	0	0
Duval	56	51	53	53	49
Escambia	7	3	3	4	7
Flagler	23	30	33	30	30
Gulf	0	1	1	2	2
Hardee	1	0	1	0	0
Hendry	1	1	1	0	1
Hernando	11	13	14	12	9
Highlands	6	6	4	7	10
Hillsborough	33	38	42	46	44
Indian River	21	28	31	22	31
Jackson	1	1	1	0	0
Lafayette	1	1	1	1	0
Lake	38	51	58	60	65
Lee	51	44	41	39	38
Leon	14	16	16	19	14

	2005	2006	2007	2008	2009
Levy	0	0	0	2	3
Madison	1	3	2	2	1
Manatee	25	29	28	29	21
Marion	23	17	21	21	25
Martin	32	37	39	32	28
Monroe	9	11	8	8	7
Nassau	3	4	4	6	8
Okaloosa	14	11	11	12	8
Okeechobee	3	2	4	4	1
Orange	151	144	152	168	145
Osceola	22	35	34	35	38
Palm Beach	103	91	105	109	103
Pasco	18	19	18	16	15
Pinellas	59	60	68	62	55
Polk	33	32	35	37	40
Putnam	4	7	5	5	6
Santa Rosa	4	4	2	4	3
Sarasota	33	38	33	33	35
Seminole	103	125	119	109	110
St. Johns	19	30	29	33	30
St. Lucie	23	25	23	28	24
Sumter	1	3	1	2	0
Suwannee	0	1	2	4	7
Union	1	1	1	1	0
Volusia	405	464	419	428	436
Wakulla	1	0	0	0	0
Walton	0	0	1	1	1

## Enrollment by Religious Affiliation - Undergraduate (Fall 2009)

Anglican	4	Disciples of Christ	20	Others	65
Assembly of God	13	Eastern Orthodox	8	Pentacostal Holiness	19
Baptist	160	Eastern Religions, Other	12	Presbyterian	80
Buddhism	7	Episcopal	55	Protestant Christian	25
Catholic	435	Hindu	4	Seventh Day Adventist	4
Christian Science	2	Islam (Muslim/Moslem)	5	Unitarian	3
Church of Christ	9	Jewish	48	United Church of Christ	8
Church of God	21	Lutheran	45	Non Denominational Christian	140
Church of the Brethren	2	Methodist	107	No preference	220
Church of the Nazarene	1	Morman Latter Day Saints	6	Unknown	634
				<b>TOTAL</b>	<b>2162</b>

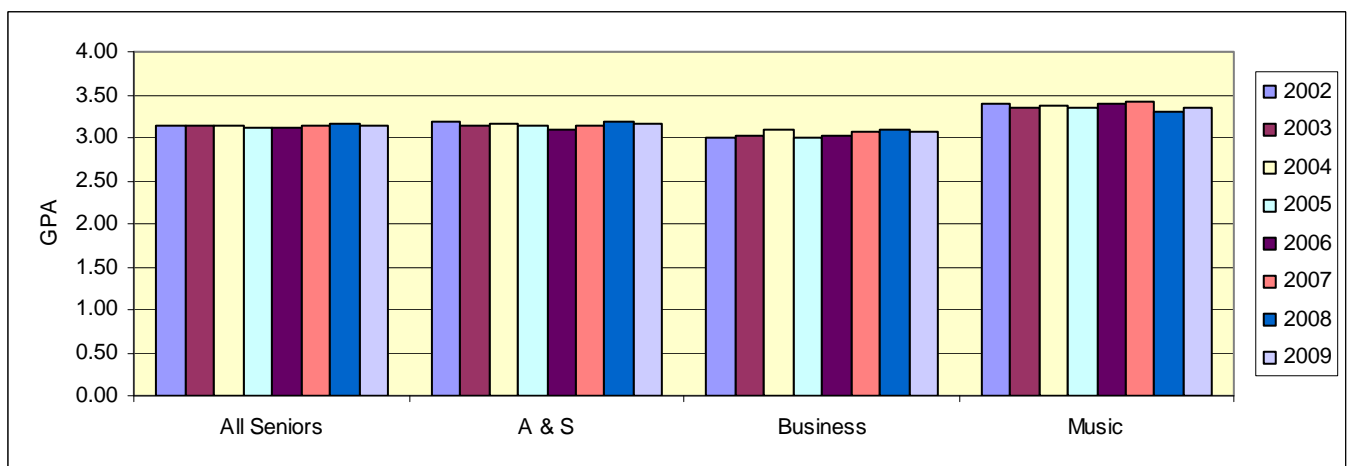
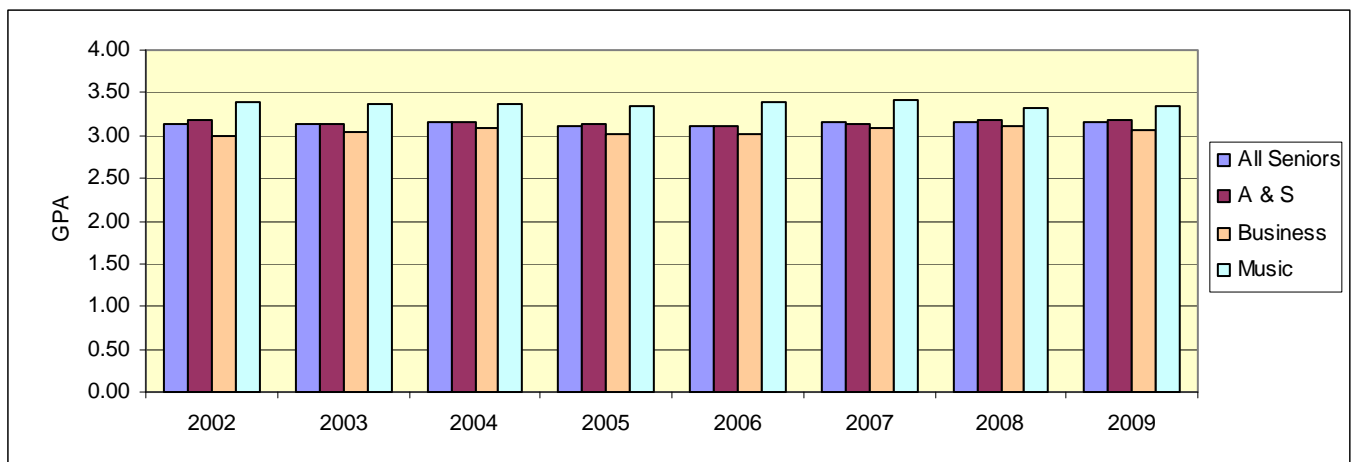
# Age Distribution (Fall 2009)



## Average Senior cumulative GPA's (Historical)

(Spring Semester)	2002	2003	2004	2005	2006	2007	2008	2009
All Seniors	3.14	3.13	3.15	3.12	3.11	3.15	3.16	3.15
Arts & Sciences	3.18	3.13	3.16	3.14	3.10	3.13	3.18	3.17
Business	2.99	3.03	3.09	3.01	3.02	3.08	3.10	3.06
Music	3.39	3.36	3.37	3.35	3.40	3.42	3.31	3.35

Spring 2009	All seniors	A & S	Business	Music
95th Percentile (Top 5%)	3.92	3.92	3.87	3.96
90th Percentile (Top 10%)	3.80	3.82	3.70	3.92
80th Percentile (Top 1/5)	3.64	3.70	3.53	3.79
75th Percentile (Top 1/4)	3.56	3.60	3.45	3.75
67th Percentile (Top 1/3)	3.42	3.44	3.36	3.68
60th Percentile (Top 40%)	3.34	3.34	3.24	3.57
50th Percentile (Top 1/2, median)	3.18	3.18	3.12	3.44
40th Percentile	3.05	3.08	2.97	3.30
25th Percentile	2.80	2.83	2.72	3.03





## Class Statistics

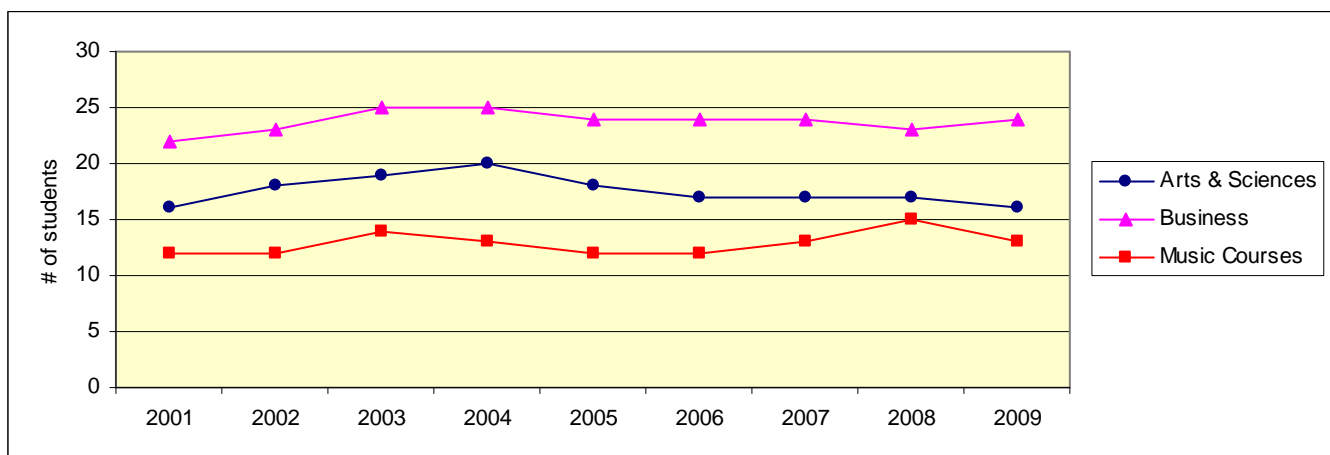
### Average Class Size - Undergraduate (Fall 2009)

	Lower Level	Upper Level	Combined
Arts & Sciences	19	13	16
Education	19	7	10
Humanities	16	14	15
Natural Sciences	21	11	18
Social Sciences	22	16	19
Business	25	23	24
Music Courses	14	12	13
Music Ensembles	18	19	19
Applied Music	3	2	3

Independent Study is excluded from the above. The number of Independent Study sections across all schools = 44.

### Average Class Size - Undergraduate (Historical)

	2001	2002	2003	2004	2005	2006	2007	2008	2009
Arts & Sciences	16	18	19	20	18	17	17	17	16
Education	13	12	15	13	12	12	14	12	10
Humanities	15	16	17	17	17	16	16	16	15
Natural Sciences	17	18	20	22	19	20	20	18	18
Social Sciences	19	22	22	24	23	21	19	20	19
Business	22	23	25	25	24	24	24	23	24
Music Courses	12	12	14	13	12	12	13	15	13
Music Ensembles	18	16	17	17	17	17	17	19	19
Applied Music	2	2	2	2	3	3	3	3	3



# STUDENT LIFE

## Athletics

### Intercollegiate Athletics

Stetson is a member of the National Collegiate Athletic Association, and both men's and women's teams compete on a Division I level. Hatter basketball and baseball teams play national schedules and have achieved ranking as major powers.

#### Men's Teams

Baseball  
Basketball  
Crew  
Cross Country  
Golf  
Soccer  
Tennis

#### Women's Teams

Basketball  
Crew  
Cross Country  
Golf  
Soccer  
Softball  
Tennis  
Volleyball

### Intramural Program

The Intramural Program offers young men and women the opportunity to manage, officiate, direct and participate in physical activities with the conviction that this participation will promote stability, coordination, sportsmanship, and a sense of leadership which will touch all aspects of their lives. The following sports are available to both men and women:

Baseball	Foosball	Sand Volleyball
Basketball	Golf	Soccer
Bowling	Inner tube Water Polo	Softball
Cross Country/Track	Kickball	Swimming
Darts	Lacrosse	Tennis
Dodge Ball	Melonball	Ultimate Frisbee
Flag Football	Ping Pong	Volleyball
Floor Ball/Hockey	Pool	Wiffleball

### Organizations and Clubs

Stetson has many organizations open to all students, affording a variety of activity. Membership in some organizations is based upon special interests or academic achievement; others are primarily social.

#### Social Organizations

##### Social Sororities

Alpha Chi Omega  
Alpha Xi Delta  
Delta Delta Delta  
Pi Beta Phi  
Zeta Tau Alpha

##### Social Fraternities

Delta Sigma Phi  
Phi Sigma Kappa  
Pi Kappa Alpha  
Pi Kappa Phi  
Sigma Nu  
Sigma Phi Epsilon

## **Honorary and Academic Organizations**

Alpha Kappa Delta (Sociology)  
Alpha Kappa Psi  
American Choral Directors Association  
American Marketing Association  
American Medical Student Association  
Association for Computing and Machinery  
Beta Alpha Psi  
Beta Beta Beta (Biology)  
Beta Gamma Sigma  
Chi Sigma Iota (Counseling)  
Collegiate Music Educators  
COSIGN (College Student Interest Group in Neurology)  
Delta Phi Alpha (German)  
Florida Future Educators of America  
Future Leaders Association  
Gamma Sigma Epsilon (Chemistry)  
Gamma Theta Upsilon (Geology)  
German Club  
Graduate Business Society  
Kappa Delta Pi  
Lambda Pi Eta  
Mortar Board  
Omicron Delta Epsilon  
Omicron Delta Kappa (Leadership)  
Phi Alpha Delta (Pre-Law)  
Phi Alpha Theta (History)  
Philosophy Club  
Phi Beta Kappa (General)  
Phi Mu Alpha Sinfonia  
Pi Delta Phi (French)  
Pi Kappa Lambda  
Pi Sigma Alpha (Political Science)  
Psi Chi (Psychology)  
Russian Club  
Sigma Alpha Iota  
Sigma Delta Pi (Spanish)  
Sigma Pi Sigma (Physics)  
Society of Physics Students  
Society for Human Resource Management  
Stetson Accounting Association  
Student Advisory Council of the School of Music  
Student Affiliates of the American Chemical Society  
Student Composers Forum  
Theta Alpha Kappa (Religious Studies)  
Theta Alpha Phi (Theatre)

## **Religious Organizations**

Baptist Collegiate Ministry  
Canterbury House  
Catholic Campus Ministry  
Intervarsity Christian Fellowship  
Jewish Student Organization  
Lutheran Campus Ministries  
Stetson University Interfaith Council  
Wesley House

## **Service Organizations**

C.A.U.S.E.  
Circle K International  
Habitat for Humanity  
Into the Streets  
Providing Animals with Service  
Roots and Shoots  
Students Coalition to End Homelessness

## **Campus Life Organizations**

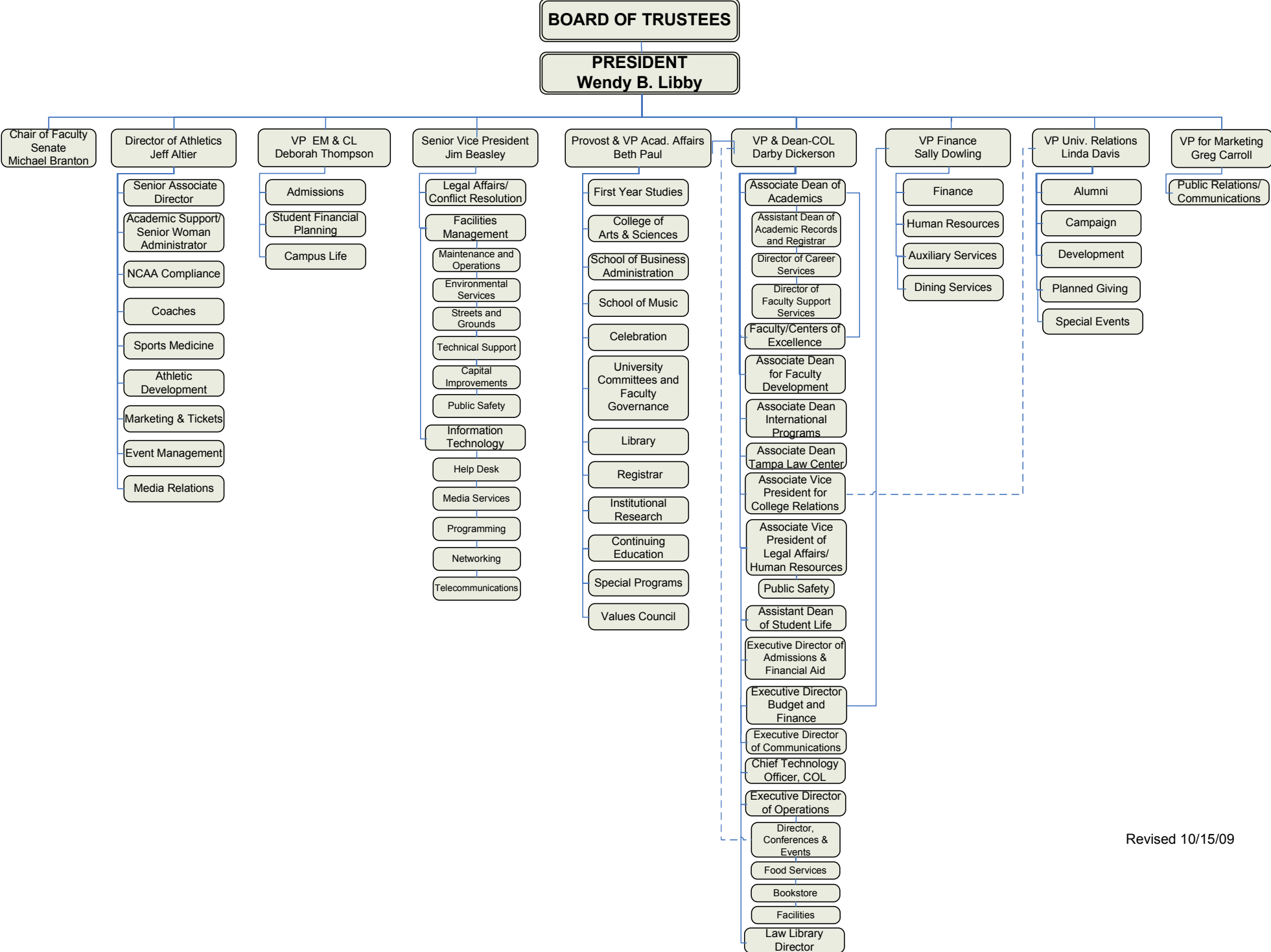
Council for Student Activities (CSA)  
Family Weekend  
FOCUS  
Greenfeather  
Interfraternity Council (IFC)  
Multicultural Student Council (MSC)  
Panhellenic Council (PH)  
Student Government Association (SGA)  
The Reporter (Newspaper)  
Touchstone Literary Magazine / Poetry at an Uncouth Hour

## **Special Interest Organizations**

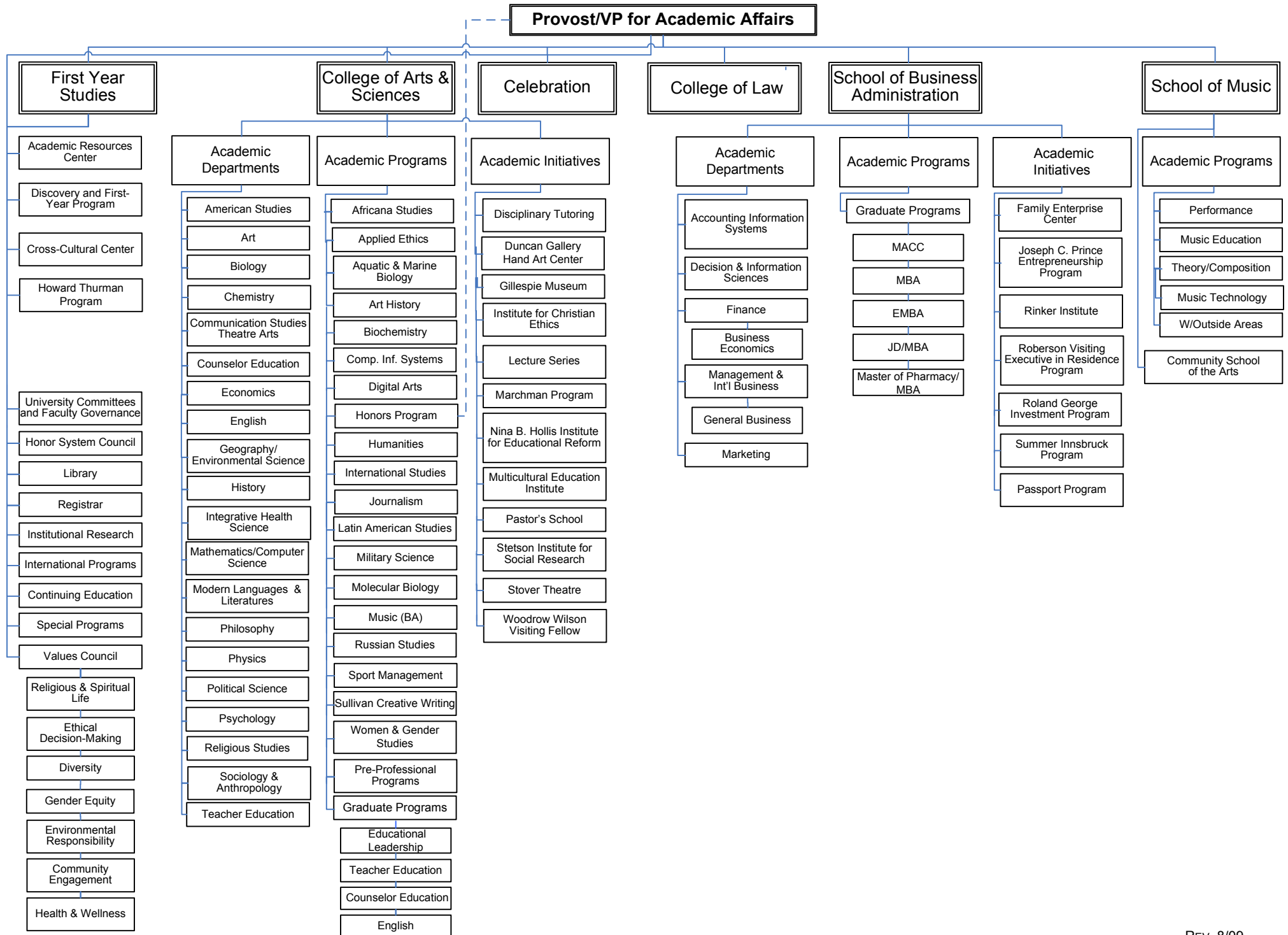
Aikido Club  
Assoc. of Disability Advocates  
Black Student Association  
Caribbean Student Organization  
College Democrats  
College Libertarians  
College Republicans  
Crew Club  
Green Hat Media  
Hatter Tennis Team  
Hindsight  
Hip-Hop Hatter Dance Club  
H.O.L.A. (Latin American)  
Honors Council  
Indian Student Association  
I.N.D.I.E.  
International Student Organization  
Invisible Children United  
Kaleidoscope  
MedEx  
Model United Nations  
Model US Senate

Muslim American Student Association  
NightCap  
One here... One there...  
O.S.A.P.E. (Organization for Students Actively Pursuing Equality)  
Philanthropy United (PhUn)  
QED (Math Club)  
SOAR (Stetson Outdoor Adventures and Recreation)  
S.P.A.R.K.  
STAND Coalition -  
Students Taking Action Now: Darfur  
Stetson Recycles  
Stetson Swing and Blues Society  
Stetson University Film Appreciation Society  
Stetson University Investment Organization  
Stetson University Oxfam Club  
Stetson Votes  
Student Alumni Association  
Student Ambassadors  
Swim Club  
Top Hats Dance Team  
WHAT Radio

# STETSON UNIVERSITY ORGANIZATIONAL CHART 2009-10 (DRAFT – EFF. 11/01/09)



# ACADEMIC ORGANIZATIONAL CHART 2009-10



## Faculty

### Full-time Faculty - by Rank, Gender, Ethnicity (DeLand Campus, 1999-2009)

	NR/Alien		Black, non-Hispanic		Asian / Pacific Islander		Hispanic		White, non-Hispanic		Other	Total
	Men	Women	Men	Women	Men	Women	Men	Women	Men	Women	M / W	

#### As of 11/1/01

Professors			1						47	12		60
Associate professors			1	3		2		2	35	18		61
Assistant professors		1	3	1	1		3		12	23		44
Instructors/Lecturers							1	3	7	12		23
Other faculty					1				5	2		8
<b>TOTAL</b>		1	5	4	2	2	4	5	106	67		196

#### As of 11/1/03

Professors			1						51	14		66
Associate professors			1	4		2	1	2	30	21		61
Assistant professors			2	1	2		1		18	19	1 / 0	44
Instructors/Lecturers								3	6	6		15
Other faculty	1				1				5	1		8
<b>TOTAL</b>	1		4	5	3	2	2	5	110	61	1 / 0	194

#### As of 11/1/05

Professors			1		1	1		1	51	15		70
Associate professors				4		1	1	1	27	24		58
Assistant professors	2	1	1	1			1		20	16	1 / 0	43
Instructors/Lecturers		1						2	6	11		20
<b>TOTAL</b>	2	2	2	5	1	2	2	4	104	66	1 / 0	191

#### As of 11/1/07

Professors			1			1		1	50	16		69
Associate professors	2			3		1	2		27	29		64
Assistant professors	2	1	1	1					13	6	1 / 0	25
Instructors/Lecturers		1					1	2	6	9		19
Other faculty					1				2	4	0 / 1	8
<b>TOTAL</b>	4	2	2	4	1	2	3	3	98	64	1 / 1	185

#### As of 11/1/09

Professors						1		1	43	21	2 / 0	68
Associate professors	3		1	3		1	2		28	23	1 / 1	63
Assistant professors	1	1		2	1				14	4		23
Instructors/Lecturers								1	5	9		15
Other faculty	1				1				3	3	0 / 2	10
<b>TOTAL</b>	5	1	1	5	2	2	2	2	93	60	3 / 3	179

Source: IPEDS Fall Staff Survey

## Percent of Full-Time teaching Faculty with Terminal Degrees, DeLand - Historical

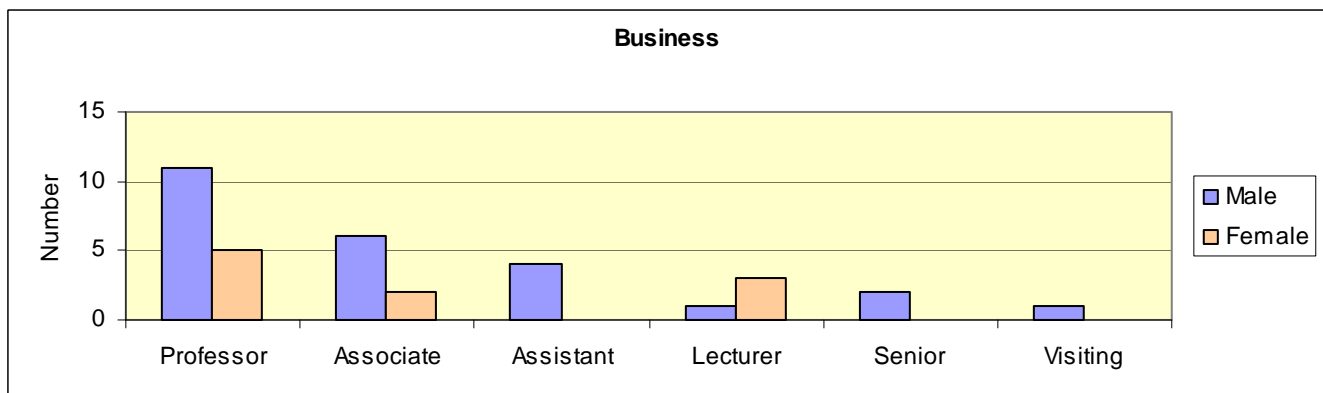
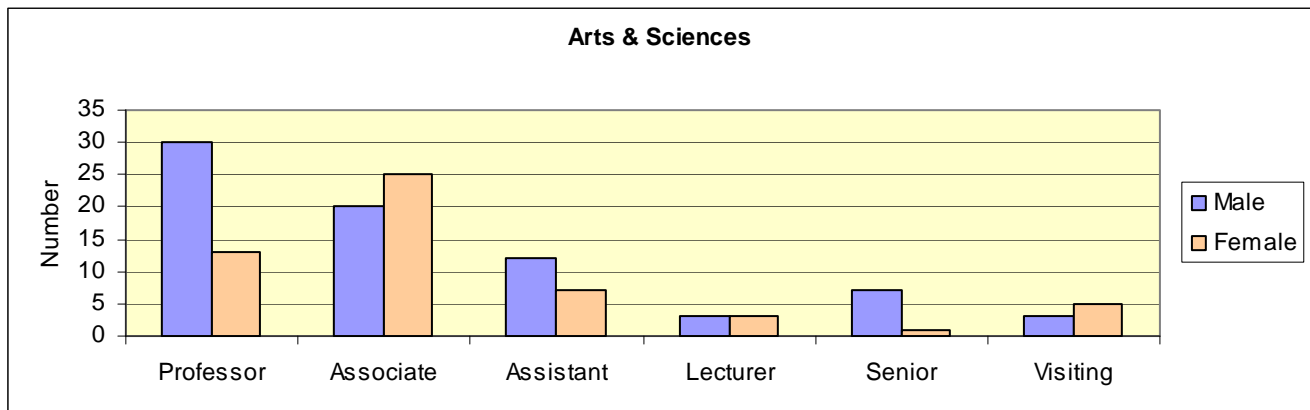
(includes Sabbaticals/Leaves)

	2002	2003	2004	2005	2006	2007	2008	2009
Professors	100%	100%	100%	100%	100%	100%	100%	99%
Associate Professors	97%	97%	96%	97%	94%	94%	94%	95%
Assistant Professors	84%	82%	81%	83%	93%	92%	86%	92%
Instructors/Lecturers/Visiting	45%	52%	48%	60%	62%	63%	67%	72%
Senior Lecturer	100%	100%	100%	100%	100%	100%	100%	100%
<b>TOTAL</b>	<b>88%</b>	<b>90%</b>	<b>89%</b>	<b>90%</b>	<b>92%</b>	<b>92%</b>	<b>92%</b>	<b>93%</b>

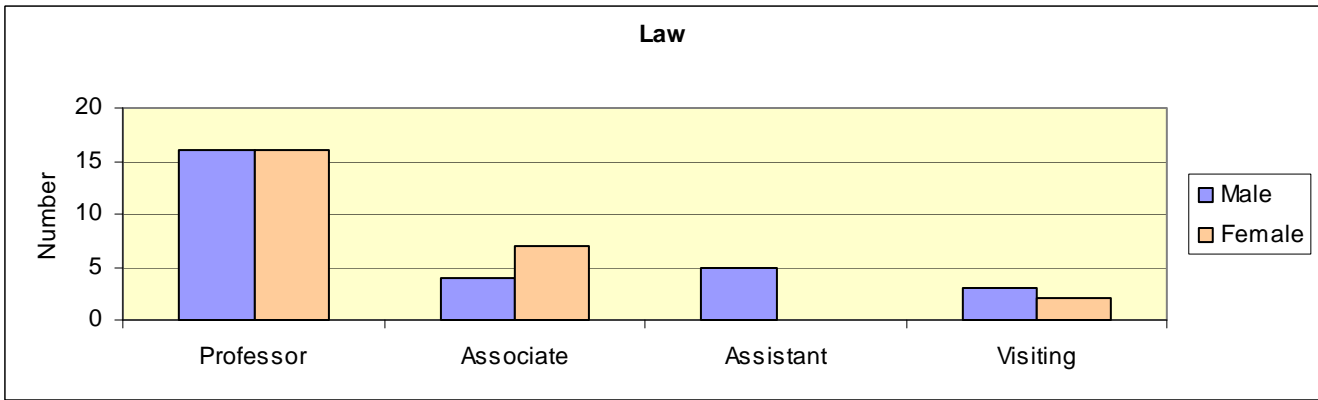
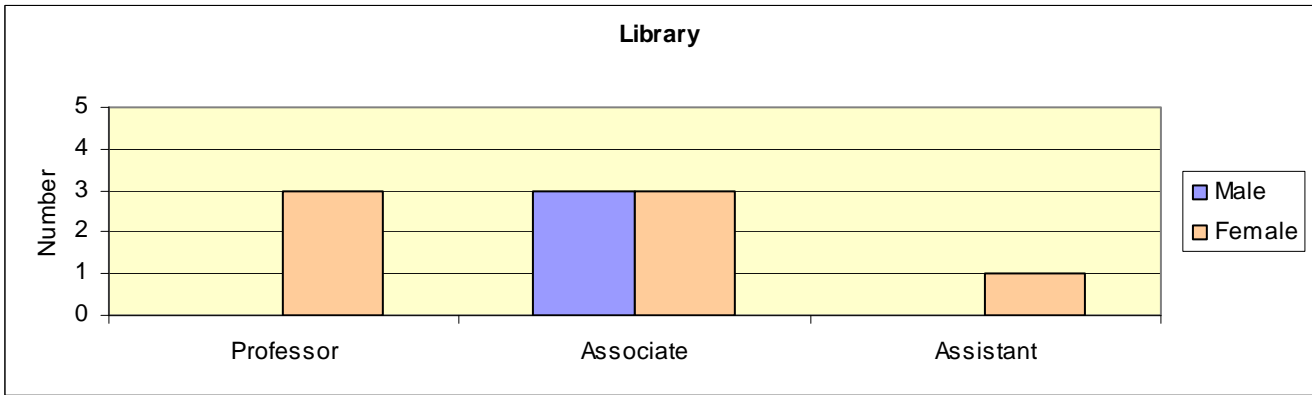
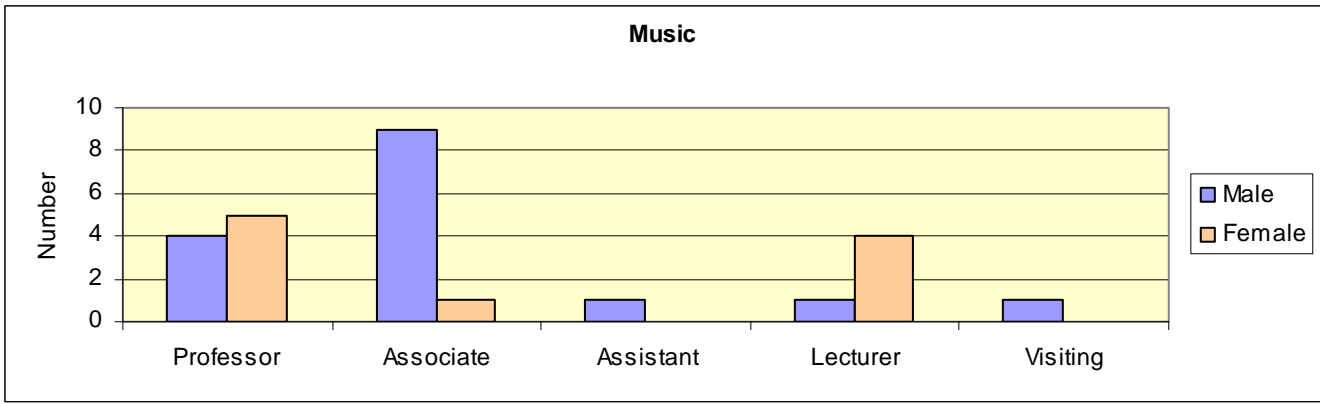
## Full-time Faculty By School and Gender (Fall 2009)

(includes Sabbaticals/Leaves)

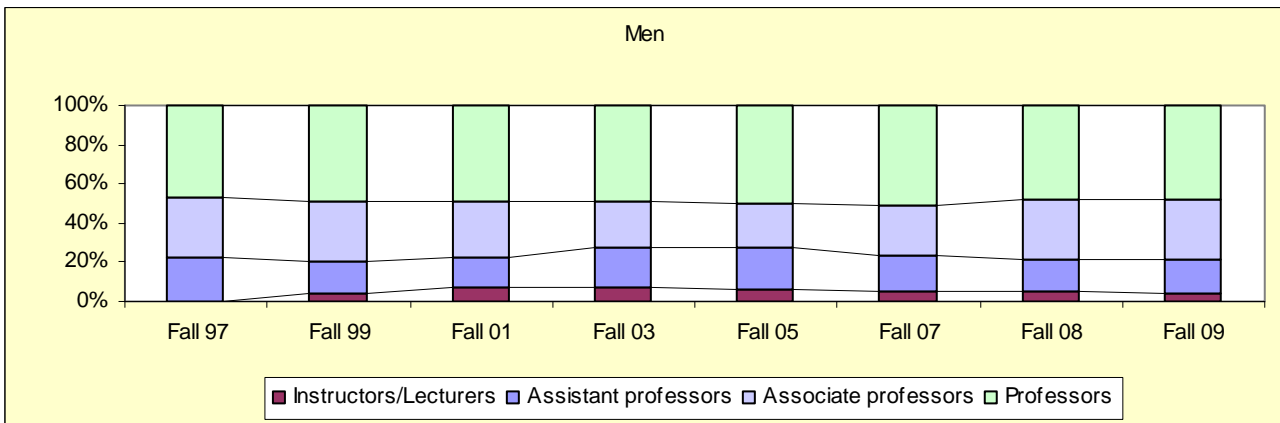
	Arts & Science		Business		Music		Library		Law	
	Male	Female	Male	Female	Male	Female	Male	Female	Male	Female
Professor	30	13	11	5	4	5	0	3	16	16
Associate	20	25	6	2	9	1	3	3	4	7
Assistant	12	7	4	0	1	0	0	1	5	0
Lecturer	3	3	1	3	1	4				
Senior Prof.	7	1	2	0	0	0				
Visiting	3	5	1	0	1	0			3	2
<b>TOTAL</b>	<b>75</b>	<b>54</b>	<b>25</b>	<b>10</b>	<b>16</b>	<b>10</b>	<b>3</b>	<b>7</b>	<b>28</b>	<b>25</b>

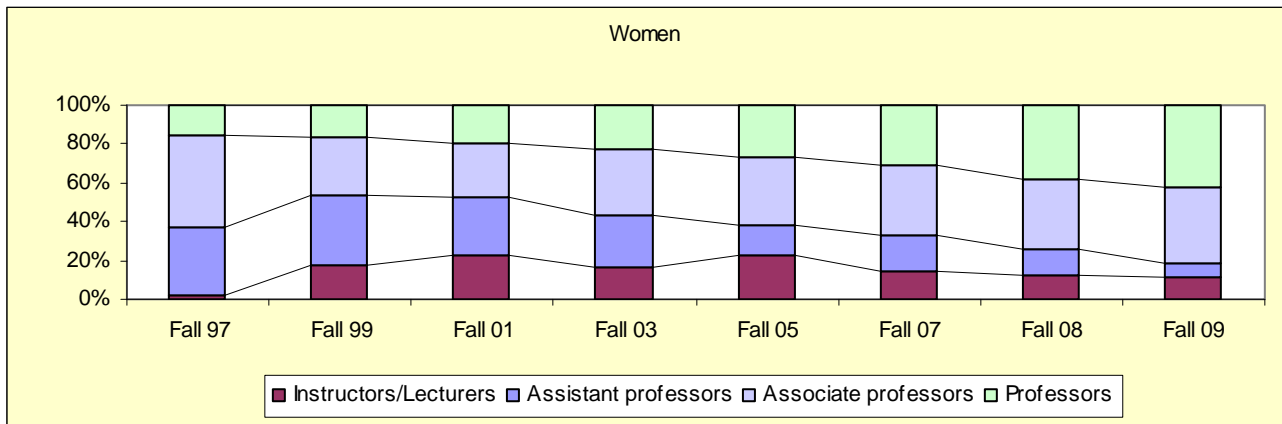






## Full-Time Instructional Faculty by Gender - Historical





Source: IPEDS Faculty Salary Survey

### Student-Faculty Ratio

The table below shows the ratio of full-time equivalent undergraduate students to full-time equivalent instructional faculty for the fall semester.

	Fall 2002	Fall 2003	Fall 2004	Fall 2005	Fall 2006	Fall 2007	Fall 2008	Fall 2009
Student-faculty ratio	10.7 to 1	11.1 to 1	11.7 to 1	11.7 to 1	11.3 to 1	11.1 to 1	11.6 to 1	11.0 to 1
Student FTE*	2101.3	2118.3	2197.6	2200.2	2235.9	2224.6	2185.1	2126.6
Faculty FTE**	196.4	191.7	187.4	188.7	197.7	200.0	189.0	193.4

\*Full-time undergraduates + Part-time undergraduate credit hours / 12

\*\*Full-time faculty excluding sabbatical/leaves and faculty in stand alone grad programs (CSL) + 1/3 Part-time faculty

### Staff

(Including DeLand, Celebration and Law School)

	Fall 2006		Fall 2007		Fall 2008	
	Full-time	Part-time	Full-time	Part-time	Full-time	Part-time
Instruction	237	103	235	123	231	124
Executive	113	0	107	0	107	1
Other Professional	152	12	164	11	162	13
Technical, paraprofessional	6	1	6	1	7	1
Clerical and secretarial	139	19	138	21	134	17
Skilled crafts	4	0	4	0	4	0
Service/Maintenance	112	6	119	3	119	3
<b>Sub-Total</b>	<b>763</b>	<b>141</b>	<b>773</b>	<b>159</b>	<b>764</b>	<b>159</b>
Graduate Assistant			1		1	
<b>TOTAL</b>	<b>904</b>		<b>933</b>		<b>924</b>	

Source: IPEDS: EAP - Employees by Assigned position report or Staff Survey

## Presidents of Stetson University

Wendy B. Libby	2009 – Present
H. Douglas Lee	1987 – 2009
Pope A. Duncan	1977 – 1987
John E. Johns	1969 – 1976
Paul F. Geren	1967 – 1969
J. Ollie Edmunds	1948 – 1967
William Sims Allen	1934 – 1947
Lincoln Hulley	1904 – 1934
John F. Forbes	1885 – 1903

## Board of Trustees (2009-2010)

Cynthia R. Brown Ormond Beach, Florida	Jill Jinks Atlanta, Georgia
J. Hyatt Brown Ormond Beach, Florida	C. Paul Johnson Napa, California
Emerson Brumback Dade City, Florida	Geoffrey Jollay Jacksonville, Florida
S. Sammy Cacciatore, Jr. Melbourne, Florida	Joseph W. Landers, Jr. Tallahassee, Florida
Nelson Clemmens Goshen, Kentucky (Chair, Business Board)	L. Patrick Lane DeLand, Florida
Nestor de Armas Winter Park, Florida (Board Chair)	Wendy B. Libby DeLand, Florida
Bonnie Foreman St. Petersburg, Florida	Gary R. Libby Daytona Beach, Florida (Chair, Arts and Sciences Board)
Leo Govoni Clearwater, Florida	Christine E. Lynn Boca Raton, Florida
William Gray Atlanta, Georgia (President, Alumni Association)	Joshua Magidson Clearwater, Florida (Chair, Law Board)
Dolly Hand Belle Glade, Florida	Lee McGraw Osterville, Massachusetts
R. Dean Hollis Omaha, Nebraska	Earnest W. Murphy Daytona Beach, Florida (Chair, Music Board)

Jane Edmunds Novak  
Ponte Vedra Beach, Florida

Billy Raley  
Lake Mary, Florida

Harlan Paul  
DeLand, Florida

Gary D. Reddick  
The Woodlands, Texas

Luis Prats  
Tampa, Florida

David B. Rinker  
West Palm Beach, Florida

### **Trustees Emeriti**

Mack Cleveland  
Sanford, Florida

Richard A. McMahan  
DeLand, Florida

Franklin T. Gaylord  
Eustis, Florida

Thomas F. Wands  
DeLand, Florida

Mark C. Hollis  
Lakeland, Florida

Patricia M. Wilson  
Frostproof, Florida

### **Academic and Administrative Officers**

#### **Administration**

Wendy B. Libby  
*President*

Elizabeth (Beth) Paul  
*Provost and Vice President for Academic Affairs*

#### **President's Cabinet**

Jeff Altier  
*Director of Athletics*

Linda P. Davis  
*Vice President for University Relations*

James R. Beasley  
*Senior Vice President*

Darby Dickerson  
*Vice President & Dean of the College of Law*

Joan Beasley  
*Executive Assistant to the President*

Sally Dowling  
*Vice President for Finance*

Michael Branton  
*Chair of the Faculty Senate*

Deborah Thompson  
*Vice President for Enrollment Management and  
Campus Life*

Gregory Carroll  
*Vice President for Marketing*

## Dean's Council

Grady Ballenger  
*Dean of the College of Arts and Sciences*

Darby Dickerson  
*Vice President & Dean of the College of Law*

Stuart Michelson  
*Dean of the School of Business Administration*

Leonard L. Nance  
*Dean of First Year Studies*

Jean O. West  
*Dean of the School of Music*

## Academic Departments / Programs (2009-10)

### College of Arts & Sciences

#### Department

American Studies  
Art  
Biology  
Chemistry  
Communication Studies and Theatre Arts  
Counselor Education  
Economics  
English  
Geography & Environmental Science  
History  
Integrative Health Science  
Mathematics and Computer Science  
Modern Languages & Literature  
Philosophy  
Physics  
Political Science  
Psychology  
Religious Studies  
Sociology & Anthropology  
Sport Management  
Teacher Education

#### Chairs

Emily Mieras  
Gary Bolding  
Cindy Bennington  
Ramee Indralingam  
Kenneth McCoy  
Brigid Noonan  
Ranjini Thaver  
Thomas Farrell  
Bruce C. Bradford  
Margaret Venzke  
Michele Skelton  
Lisa Coulter  
Nancy Vosburg  
Ronald Hall  
George Glander  
William Nysten  
Richard Kindred  
Mitchell Reddish  
Kimberly Flint-Hamilton  
Michele Skelton  
Glen Epley

#### Special Programs

Africana Studies  
Aquatic and Marine Biology  
Biochemistry  
COSM\*S  
Digital Arts  
Environmental Sciences  
General Studies  
Honors Program

#### Chair / Coordinator / Director

Shawnrece Miller  
Melissa Gibbs  
Harry Price  
Terry Farrell  
Nathan Wolek  
Tony Abbott  
John Pearson  
Michael Denner

Humanities  
Institute for Christian Ethics  
International Studies  
Journalism  
Latin American Studies  
Russian Studies  
Stetson Institute for Social Research

Women and Gender Studies

### **Advising Committees**

Discovery  
First-Year English  
Grant and Fellowships  
Pre-Engineering  
Pre-Health  
Pre-Law  
Undergraduate Teacher Education

Rusty Witek  
Dixon Sutherland  
T. Wayne Bailey  
Michael W. McFarland  
Robert Sitler  
Eugene Huskey  
Diane Everett, Fall 2009  
John K. Schorr, Spring 2010  
Emily Mieras and Elisabeth Poeter

Leonard Nance  
Megan O'Neill  
Karen Kaivola  
Kevin Riggs  
Michael King  
T. Wayne Bailey  
Elizabeth Dershimer

### **School of Business Administration**

#### **Department**

Accounting  
Decision and Information Sciences  
Finance  
Management & International Business  
Marketing

#### **Special Programs**

Applied Statistics  
Director of Graduate Business Programs  
Joseph C. Prince Entrepreneurial Program  
Roland George Investments Program  
Undergraduate Studies

#### **Chairs**

Judson P. Stryker  
Fred Augustine  
Lawrence J. Belcher  
Carolyn Mueller  
Carolyn Nicholson

#### **Chair / Coordinator / Director**

Betty Thorne  
Frank DeZoort  
William A. Andrews  
Lawrence J. Belcher  
Betty Thorne