

INTRODUCTION

Dear Stetson Community:

Much of the planning and evaluation necessary to improve the effectiveness of the University begins with an understanding of basic institutional facts. The *Stetson University Fact Book* is prepared annually by the Institutional Research Office to provide a better understanding of a variety of issues at Stetson. By sharing and discussing this information, members of the Stetson community are able to more effectively contribute to the planning processes of the University. As you use this information, please let us know how future editions can be improved.

Dr. John M. Tichenor
Director of Institutional Research

GENERAL INFORMATION

Statement of Institutional Purpose Approved by the Board of Trustees, February 4, 2000

I. Educational Mission

Our mission at Stetson University is to provide an excellent education in a creative community where learning and values meet, and to foster in students the qualities of mind and heart that will prepare them to reach their full potential as informed citizens of local communities and the world.

At Stetson, the art of teaching is practiced through programs solidly grounded in a tradition of liberal learning that stimulates critical thinking, imaginative inquiry, creative expression, and lively intellectual debate. The art of learning is enhanced through small interactive classes, close student-faculty alliances, and collaborative approaches that provide the foundation for rewarding careers and advanced study in selective graduate and professional programs. We embrace diverse methodologies to foster effective communication, information and technological literacy, and aesthetic appreciation. We encourage the development of informed convictions, independent judgment, and lifelong commitments to learning that are characteristic features of the enlightened citizen. In bringing together learning and values, the University encourages all of its members to demonstrate personal integrity; to develop an appreciation for the spiritual dimension of life; to embrace leadership in an increasingly complex, interdependent, and technological world; and to commit to active forms of social responsibility.

II. Values and Vision

From its founding, Stetson University has affirmed the importance of spiritual life and the quest for truth in its educational mission. The University motto, *Pro Deo et Veritate* (“For God and Truth”), is a symbol of this commitment, and it expresses our determination to integrate the pursuit of a liberal education with the search for meaning in our lives and in our communities.

Chartered as an independent and comprehensive university, Stetson has had an historical relationship with the Christian community and the Baptist denominations. That relationship has shaped our commitment to build an inclusive community. Today, the University includes persons from diverse religious, ethnic, cultural, economic, and intellectual backgrounds. It is thus from varying perspectives that members of the University community have joined together to affirm collectively

- the centrality of knowledge, examined ideas, and independent judgment in the life of an educated person;
- the inherent dignity, worth, and equality of all persons;
- the importance of community in human life;
- the role of religious and spiritual quests for meaning in human experience;
- the value of diverse persons and differing ideas in an educational community;
- the responsibility we share to work toward social justice;
- the necessity for decisions to be guided by ethics and social responsibility; and
- the obligation of individuals and communities to act as responsible stewards of the natural environment.

In our curriculum and co-curricular activities, then, we aim to infuse traditional liberal education with the values of religious and spiritual life, ethical decision-making, human diversity and commonality, gender equity, community service, and environmental responsibility. We aspire to develop distinctive, innovative, and interdisciplinary undergraduate and graduate programs that are centered on vigorous intellectual inquiry, informed by these values, increasingly global in perspective, and worthy of local and national recognition.

III. Heritage and Character

Florida's first private university, Stetson University was founded in 1883 by Henry A. DeLand, a New York philanthropist, as DeLand Academy. In 1887, the Legislature of the State of Florida enacted the Charter of DeLand University as an independent institution of higher learning. The university's name was changed in 1889 to honor John B. Stetson, the nationally-known hat manufacturer who gave generously of his time and means to advance the quality and reputation of the institution, and who served, with Mr. DeLand and others, as a founding trustee of the University. The first charter stated that the objective of the University should be "to promote the general interests of education, and to qualify its students to engage in the learned professions or other employments of society, and to discharge honorably and usefully the various duties of life." Stetson's first president, Dr. John F. Forbes, clearly described the commitment to teaching that has been a hallmark of the University throughout its history:

Buildings, libraries and apparatus are good and give added power, but the vital contact of students with a vigorous and stimulating mind and heart--this is the sine qua non of a successful education...The most important thing is to find men and women of large heart and mind, apt to teach and full of enthusiasm and stimulating power...to develop in the student the habit of independent judgment--of investigating statements and principles for oneself, and thus for oneself discover their truth or falsity.

Today, Stetson University is a non-sectarian, comprehensive, private university composed of individually strong undergraduate programs in various colleges and schools, and a selected group of academically distinctive graduate, professional, and continuing education programs. We seek academically talented individuals with leadership potential and records of personal growth and community service. We promote and support scholarly and creative activity among students, faculty, and staff as a means to enhance learning, teaching, and professional development, and as a contribution to the broader base of knowledge.

Accreditation

- ◆ Accredited by the Commission on Colleges of the Southern Association of Colleges and Schools (1866 Southern Lane, Decatur, Georgia 30033-4097, Telephone (404) 679-4501) to award the Bachelor's, Master's and Specialist in Education degrees in the College of Arts and Sciences; Bachelor's degrees in the School of Music; Bachelor's and Master's degrees in the School of Business Administration; and the Juris Doctor and the Master of Laws degree in the College of Law.
- ◆ AACSB International – The Association to Advance Collegiate Schools of Business
- ◆ American Bar Association
- ◆ American Chemical Society
- ◆ Council for Accreditation of Counseling and Related Educational Programs
- ◆ National Association of Schools of Music
- ◆ National Council for Accreditation of Teacher Education

Historical Timeline

- 1883 Henry A. DeLand founds the DeLand Academy, November 5, originally housed in the First Baptist Church.
- 1884 DeLand Hall is completed, the first building in Florida to be continuously used for higher education.
- 1885 The institution becomes DeLand College, and John Franklin Forbes is named the first president. An affiliation with the Florida Baptist Convention is achieved.
- 1886 Stetson Hall (oldest residence hall in Florida) is occupied.
- 1887 The Florida legislature grants the charter to DeLand University defining a self-perpetuating Board of Trustees to be three-fourths Baptists with the president also to be a Baptist.
- 1889 The name is changed to John B. Stetson University, and Mr. Stetson becomes chairman of the Board of Trustees.
- 1892 Elizabeth Hall is built by Mr. Stetson--the north and south wings are completed in 1897.
- 1898 The *Florida Times Union* calls Presentation Day, February 10, "the most memorable day in...higher education" in Florida. President William R. Harper of the University of Chicago addresses the gathering leading to an affiliation (May 17) with Chicago until 1908. The University receives the wings of Elizabeth Hall, the Monroe Health Museum, and \$100,000 endowment Forbes has collected. This latter makes the University no longer dependent upon the largess of any one person.
- 1900 College of Law is founded as first law school in Florida.
- 1902 Flagler Hall becomes home of Law and Technology.
- 1904 The colorful Lincoln Hulley becomes president.
- 1907 Efforts by Baptists to change charter fail; Florida Baptist Convention founds Columbia College.
- 1908 Sampson Hall is constructed as the University's library.

- 1919 With the closing of Columbia College, a new agreement, the "Hulley-Rogers Agreement," is made with the Florida Baptist Convention giving it a voice in choosing trustees.
- 1932 Stetson joins Southern Association of Colleges and Schools. Hulley resists this action believing Stetson does not need this endorsement.
- 1934 President Hulley dies, January 20. Charles S. Farriss is named acting president. In August, William Sims Allen becomes the third president of Stetson.
- 1938 Most remembered football game, Stetson beats Florida, 16-14.
- 1943 Low point of enrollment during World War II, 362. With war's end, enrollment booms to 2,554 in 1947.
- 1947 President Allen's poor health causes him to resign in September; Dean Harry Garwood is named acting president.
- 1948 J. Ollie Edmunds assumes presidency, January 1, welcomed by William Hugh McEniry, Acting Dean, and Fred (Bud) Dickinson, President of Student Association.
- 1954 The beautiful Commons Building burns at Christmas. Carlton Union Building succeeds it (1957). College of Law moves to St. Petersburg.
- 1960 Stetson becomes first white college in Florida to admit a black student, Cornelius Hunter.
- 1963 Ford Foundation challenge grant of \$1,500,000 is largest single grant to that date. Matching funds are secured.
- 1964 The duPont-Ball Library is dedicated.
- 1967 President Edmunds resigns and Paul F. Geren becomes president.
- 1969 President Geren resigns; the day before his resignation is to take effect, he is killed in an automobile accident.
- 1970 Vice President John Johns, after serving as acting president, following President Geren's death, becomes the sixth president.
- 1974 Edmunds Center is built as a field house and multi-purpose assembly hall.
- 1976 President Johns goes to Furman University as president, and George Borders becomes acting chief administrator.
- 1977 Pope A. Duncan becomes Stetson's seventh president.
- 1978 A program of renovation of older buildings is inaugurated. Acquisition of Gillespie Museum property begins a series of real estate purchases to redefine the south boundary of the campus. Position of provost is established.
- 1979 Ten-year \$50 million campaign begins. The university's first \$1 million gift is committed by Kenneth Kirchman, trustee alumnus. The campaign is successfully concluded in five years, 1984.
- 1982- 83 Centennial of the University is celebrated with year-long activities. Gilbert Lycan's *Stetson University: The First 100 Years* is published. Phi Beta Kappa, Gamma of Florida, is installed as first chapter in a private university in Florida. Roland George Investments Program is begun. In 1989 the Roland and Sarah George Institute for Applied Investments is funded by a bequest in the will of Sarah George.

- 1984 Chancellor J. Ollie Edmunds dies. Master of Accountancy added. College of Liberal Arts becomes College of Arts & Sciences. School of Music adds Bachelor's degree in Musical Theatre.
- 1985 Stetson joins Trans America Athletic Conference and is a founding member of the women's New South Conference. The John T. Rosa bequest funds purchase of apartments at the College of Law. New Community School of the Arts is inaugurated.
- 1986 A master campus plan is developed.
- 1987 H. Douglas Lee, Executive Vice President, succeeds President Duncan as president and Duncan becomes Chancellor. The sorority houses are dedicated. A \$200 million fund campaign is approved. Hollis Leadership Development Program is funded. Major renovations begin at the College of Law.
- 1989 Griffith Hall, which houses admissions and financial aid, is completed. A master campus landscaping plan which begins the reforestation of Woodland Boulevard is approved.
- 1990 Law School team wins A.B.A. National Mock Trial Competition for second year in a row. The Lynn Center is purchased with a gift of \$3 million from E. M. Lynn, an alumnus. For the sixth year *U.S. News and World Report* ranks Stetson among the best comprehensive universities in the South. A new agreement is made with the Florida Baptist Convention reducing its role in Trustee nominations and reducing its financial support but continuing an affiliation.
- 1991 South African Archbishop Desmond Tutu, winner of the 1984 Nobel Peace prize, speaks out on global conflicts as the inaugural speaker of the James A. Stewart Lecture Series presented by Stetson's Institute for Christian Ethics. William M. and Nina B. Hollis Foundation Inc., makes a gift of \$4.5 million, \$4 million of which establishes a scholarship fund.
- 1992-93 In collaboration with Disney Development Company and the Osceola County School Board, Stetson plans a model school and teaching academy at Celebration. Former President Jimmy Carter gives the Stewart Lecture.
- 1993-94 The \$200 Million Campaign passes the \$106 million mark. A revised charter and by-laws reaffirm Stetson's identity as an independent institution. Baptist funding drops to \$17,000.
- 1994-95 Trustee Mark Hollis and his wife, Lynn, provide \$2.5 million toward the construction of a student activities center. The first School of Music Gala fills the 2,500-plus-seat Peabody Auditorium in Daytona Beach.
- 1995-96 In a message titled "On the Threshold of the 21st Century," Holocaust survivor, Nobel Peace Prize laureate and author Elie Wiesel presents the James A. Stewart Lecture. The College of Law is ranked first in the nation for its trial and appellate programs in the 1995 *U.S. News and World Report's* survey of graduate school programs. Stetson and the Florida Baptists terminate all formal and informal relationships. The endowment climbs to over \$80 million. In a formal inaugural ceremony, the Howard Thurman Program is established to integrate the works of scholars and community leaders to seek solutions to social, religious and ethnic problems.
- 1997-98 Named for Mark and Lynn Hollis of Lakeland, the \$4.3 million, 33,000-square-foot Hollis Center for fitness and recreation is dedicated.

- 1998-99 Celebrated author and observer of the national scene with more than 30 years in print and broadcast journalism, Bill Moyers delivers the 1998 James A. Stewart Lecture, addressing the topic “Ethics for a New Millennium.” Six task forces are established within the university's newly formed Values Council as a means to develop strategic plans for implementing Stetson’s commitment to its core values. The council's activities and plans underscore the university’s mission to be an inclusive community, recognizing the dignity, worth and equality of all people. The Stetson College of Law opens a \$8.5 million Law Library and Legal Information Center that is one of the most technologically-advanced facilities of its kind in the Southeast, housing a 370,000-volume library collection and hundreds of network connections to access online legal resources.
- 1999 The opening of Melching Field at Conrad Park – a \$4.5 million state-of-the-art baseball stadium funded through a collaboration with Stetson, the City of DeLand and the DeLand Sports Redevelopment Association. Final phase of the \$200 Million Campaign, the largest fund-raising effort in Stetson’s history, begins during Stetson Weekend. The \$5.3 million expansion and renovation of the duPont-Ball Library is completed and dedicated. First annual Undergraduate Scholarship and Performance Day showcases students’ academic achievements in a campus-wide celebration open to the public.
- 2000 Author of the bestseller, *Reason for Hope: A Spiritual Journey*, and world-renowned primatologist Jane Goodall delivers the James A. Stewart Lecture. Christine Lynn of Boca Raton donates \$10 million for extensive renovations to the Eugene M. and Christine Lynn Business Center, which houses the School of Business Administration. Construction begins on the permanent home for the Stetson University Center at Celebration. Stetson acquires \$2.6 million Oscar Bluemner art collection.
- 2001 The \$200 Million Campaign concludes with a victory celebration during Stetson Weekend in January. The original goal of \$200 million was surpassed, with the campaign raising \$235,584,479. Stetson’s third campus, the \$7.2 million Stetson University Center at Celebration, opens its doors to students for the fall semester. Construction of the first phase of a \$2 million Amelia Avenue safety and beautification streetscape project is complete -- adding gates, brick pavers and landscaping to the roadway that borders the university.
- 2002 Historic Holler Fountain is brought back to life and beautifies the DeLand campus again with light and spray displays. The Roland George Investments Program team defends its national title at the student portfolio management competition. Stetson breaks ground for a women’s fastpitch softball complex. A \$12 million renovation of the Lynn Business Center is complete and the facility opens in the fall -- featuring technology-advanced classrooms and labs in a state-of-the-art facility. The Stetson College of Law opens a new student life center that houses offices for career services, student life and student organizations, as well as a lounge, fitness center and swimming pool. The law school also launches a part-time law program and breaks ground for a law center and campus in Tampa.
- 2003 Trustees approve a new landscaping policy, to plant only trees and shrubs native to Florida. The Lynn Business Center is the first building in Florida certified as a green building by the U.S. Green Building Council under its Leadership in Energy and Environmental Design (LEED) Green Building Rating System™. Our environmental efforts win recognition from the Council for Sustainable Florida, which gives Stetson one of only 16 “2003 Sustainable Florida Awards.” An Executive Master of Business Administration (EMBA) degree program for senior-level executives begins at the Stetson University Center at Celebration. A gift of \$1 million from Martha Apgar honoring the late Rev. LeRoy Lawson makes possible the Lawson Lecture Series, the Lawson Endowed Scholarship for students in Philosophy, and the Lawson Seminar and Reading Room in Elizabeth Hall.

- 2004 The College of Law opens its Tampa Law Center, a three-story, 73,500-square-foot building offering evening courses for Juris Doctor students and housing the Tampa branch of Florida's Second District Court of Appeal. Stetson welcomes its largest-ever incoming class and its largest overall student body in the fall semester. Three hurricanes cross West Volusia closing Stetson for 9 class days and causing an estimated \$400,000 in damages. A new Health and Wellness Task Force joins the six other Values Council task forces. A new Family Business major, the first in the nation, strives to give students interested in family businesses credibility and marketability.
- 2005 Dr. Leonard Nance is named Dean of First Year Studies, inaugurating a program designed to improve first year students' college experience at Stetson. The School of Business Administration begins a new Executive Passport program to help working adults with 40 to 60 hours of college credit earn a bachelor's degree in Business Administration in Saturday classes at the Celebration campus. Hulley Tower, which housed the Eloise Chimes, is taken down to its stone base when it is found that years of water damage have made it an unsafe structure. Construction begins on six new student residence buildings; one is a traditional residence hall, the other five offer apartment living. Stover Theatre celebrates its 75th anniversary as a performance hall, and the Theater Program at Stetson marks its 100th season of presenting plays.
- 2006 Music student Donovan Singletary wins the prestigious Metropolitan Opera's National Council Grand Finals and political science student Greg Nolan is awarded the Truman Scholarship. Dr. Greg Sapp is named to the new Marchman Chair of Civic and Social Responsibility. Drs. Ranjini Thaver and Neal Long of Economics win national service-learning honors from Campus Compact for their microcredit program. A \$17.2 million residence hall and "University Village" apartment complex opens for 338 students. Dolly and Homer Hand donate \$1 million to build a center for Stetson's Oscar Bluemner art collection. Martha Apgar gives \$1 million to fund the John N. Apgar Jr. Lecture Series featuring major conservative speakers. The Marshall and Vera Lea Rinker Foundation gives \$1 million toward an environmental learning center near the Gillespie Museum and native landscaping on campus. Former U.S. Rep Clay Shaw donates the papers from his 13 terms in Congress to Stetson, his alma mater.

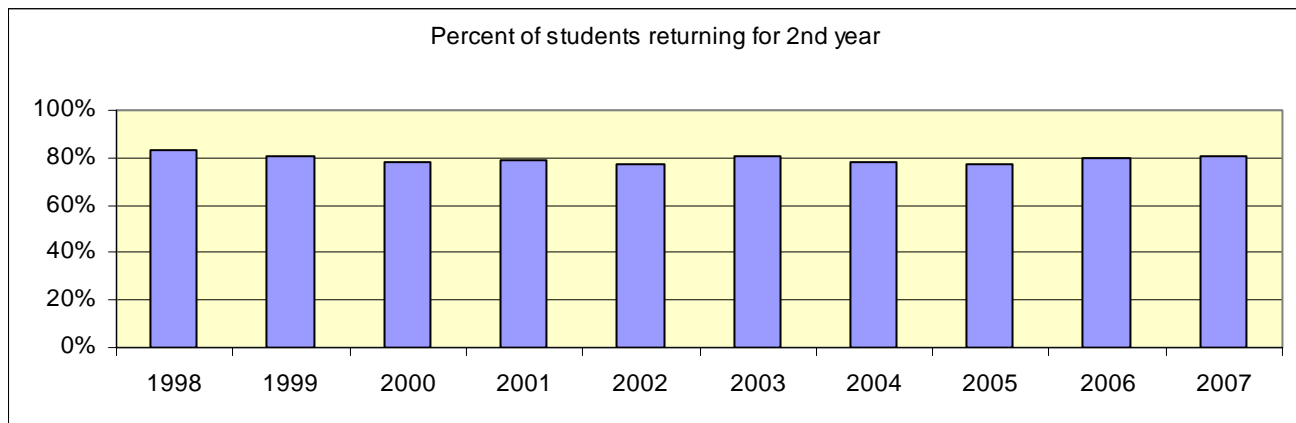
KEY INDICATORS

Student Retention Analysis

In the Fall of 2006, Stetson enrolled 567 new, full-time first-time-in-college students and 102 new transfer students. Eighty-one percent of the new, first-time-in-college students re-enrolled for classes in the Fall of 2007 and 75.5% of the transfer students re-enrolled. The tables and graphs on this page describe longitudinal retention rates and characteristics of returners & non-returners.

Percent of New (first-time-in-college) Students Returning for Second Year

1998	1999	2000	2001	2002	2003	2004	2005	2006	2007
83%	81%	78%	79%	77%	81%	78%	77%	80%	81%



Characteristics of Returning Students

		% of First Year Students Fall '06 Returning in Fall 2007			% of New Transfers Fall '06 Returning in Fall 2007		
		Initial cohort*	# returning	%	Initial cohort	# returning	%
TOTAL		567	461	81.3%	102	77	75.5%
Gender	Female	338	281	83.1%	61	45	73.8%
	Male	229	180	78.6%	41	32	78.0%
Race	International	18	15	83.3%	6	5	83.3%
	African American	45	37	82.2%	1	1	100%
	Latino/a	58	53	91.4%	13	9	69.2%
	Asian American	13	10	76.9%	1	1	100%
	Native American	1	0	0%	0	0	
	White	404	325	80.4%	73	55	75.3%
	Unknown, Other	28	21	75.0%	8	6	75.0%
School	Arts & Sciences	225	186	82.7%	55	42	76.4%
	Business	127	101	79.5%	30	21	70.0%
	Music	58	50	86.2%	11	9	81.8%
	Discovery	157	124	79.0%	6	5	83.3%

*This is the cohort used for IPEDS and other reports.

Retention Analysis, continued

Cumulative GPA (end of Spring 2007) of Fall 2006 new students

	Returners			Non-Returners		
	Mean	Median	Std. Dev.	Mean	Median	Std. Dev.
First Year	2.86	2.95	.6886	2.14	2.12	.9372
Transfers	2.99	3.00	.6434	1.93	2.14	1.0122

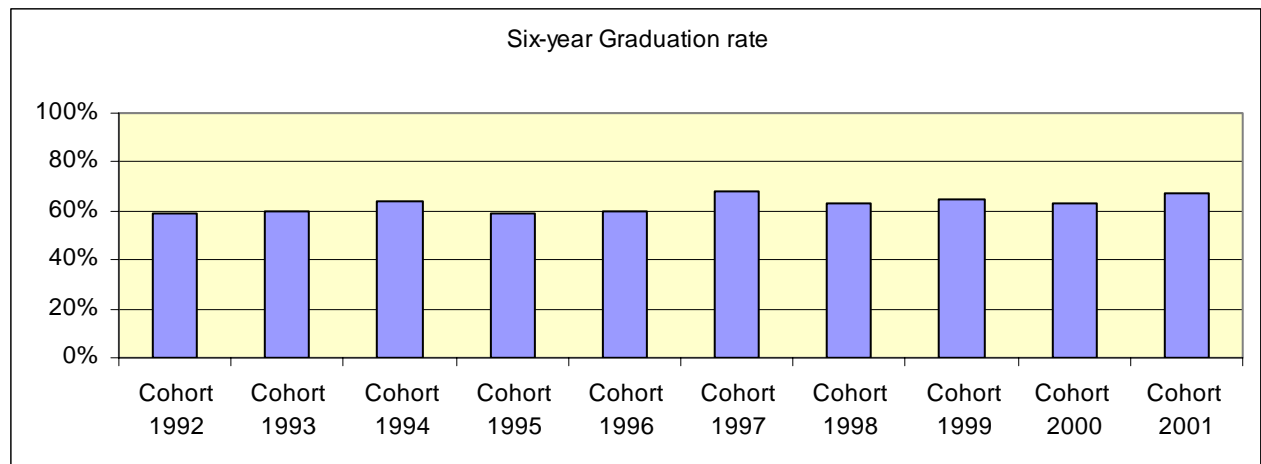
Average SAT of Fall 2006 new students

	Returners			Non-Returners		
	Mean	Median	Std. Dev.	Mean	Median	Std. Dev.
First Year	1137	1120	144.574	1088	1090	123.660
Transfers	1052	1070	152.936	1034	1035	113.110

Average HS GPA of Fall 2006 new students

	Returners			Non-Returners		
	Mean	Median	Std. Dev.	Mean	Median	Std. Dev.
First Year	3.77	3.79	.5592	3.71	3.66	.6121
Transfers	3.36	3.36	.6264	3.06	3.06	.4796

Graduation Rates	First Year Students			
	4-year	5-year	6-year	
Cohort: 1992	501	46%	57%	59%
Cohort: 1993	483	49%	58%	60%
Cohort: 1994	474	54%	62%	64%
Cohort: 1995	464	49%	57%	59%
Cohort: 1996	416	51%	60%	60%
Cohort: 1997	504	56%	66%	68%
Cohort: 1998	539	52%	62%	63%
Cohort: 1999	548	57%	64%	65%
Cohort: 2000	502	53%	61%	63%
Cohort: 2001	527	55%	66%	67%
Cohort: 2002	542	55%	65%	
Cohort: 2003	523	50%		



NSSE Survey 2006

The NSSE results on the following four pages are from the survey of first-year students and seniors in the spring of 2006 conducted by the *Indiana University Center for Postsecondary Research*. The “Selected Peers” are Drake, Eckerd, Elon, Furman, Rollins, Samford, St. Lawrence, Trinity (TX), Richmond, and Xavier (OH). Stetson will continue to participate in this important study that measures the level of student engagement at the university.



National Survey of Student Engagement

NSSE 2006 Engagement Item Frequency Distributions^a Stetson University

		First-Year Students				Seniors			
		Stetson		Selected Peers		Stetson		Selected Peers	
		Count	%	Count	%	Count	%	Count	%
Asked questions in class or contributed to class discussions	Response Options								
	Never	4	1%	22	1%	2	1%	20	1%
	Sometimes	103	33%	738	25%	47	19%	428	18%
	Often	108	35%	1073	38%	75	30%	718	30%
	Very often	94	31%	1028	36%	123	50%	1197	51%
	Total	309	100%	2861	100%	247	100%	2363	100%
Made a class presentation	Never	28	9%	180	5%	1	0%	31	1%
	Sometimes	201	65%	1442	49%	60	25%	635	26%
	Often	63	21%	940	35%	105	43%	984	42%
	Very often	16	5%	299	11%	80	32%	710	31%
	Total	308	100%	2861	100%	246	100%	2360	100%
Worked with classmates outside of class to prepare class assignments	Never	25	8%	127	4%	9	4%	59	2%
	Sometimes	159	51%	1152	39%	87	36%	648	27%
	Often	97	32%	1132	40%	91	37%	962	41%
	Very often	28	9%	449	16%	60	24%	690	29%
	Total	309	100%	2860	100%	247	100%	2359	100%
Participated in a community-based project (e.g. service learning) as part of a regular course	Never	161	53%	1529	53%	117	48%	959	41%
	Sometimes	110	37%	707	28%	92	38%	821	36%
	Often	19	7%	338	13%	23	10%	339	15%
	Very often	8	3%	150	6%	11	4%	176	8%
	Total	298	100%	2724	100%	243	100%	2295	100%
Discussed ideas from your readings or classes with faculty members outside of class	Never	116	38%	979	35%	53	22%	439	18%
	Sometimes	117	39%	1201	44%	109	44%	1093	48%
	Often	43	15%	355	14%	46	19%	459	20%
	Very often	22	8%	192	7%	35	14%	304	14%
	Total	298	100%	2727	100%	243	100%	2295	100%
Received prompt written or oral feedback from faculty on your academic performance	Never	18	6%	94	4%	5	2%	38	2%
	Sometimes	103	34%	792	29%	57	24%	500	22%
	Often	124	42%	1293	48%	113	47%	1148	51%
	Very often	50	17%	514	19%	66	27%	590	26%
	Total	295	100%	2693	100%	241	100%	2276	100%
Number of assigned textbooks, books, or book-length packs of course readings	None	0	0%	4	0%	2	1%	15	1%
	Between 1-4	31	11%	199	8%	36	15%	323	14%
	Between 5-10	112	39%	767	31%	78	32%	837	38%
	Between 11-20	105	36%	1027	38%	81	33%	656	29%
	More than 20	43	14%	662	22%	44	18%	432	19%
	Total	291	100%	2659	100%	241	100%	2263	100%
Number of books read on your own (not assigned) for personal enjoyment or academic enrichment	None	56	20%	591	22%	50	21%	362	16%
	Between 1-4	174	59%	1595	60%	124	51%	1306	58%
	Between 5-10	38	13%	348	13%	46	19%	405	18%
	Between 11-20	12	4%	77	3%	13	5%	114	5%
	More than 20	13	5%	50	2%	8	3%	76	3%
	Total	293	100%	2661	100%	241	100%	2263	100%

		First-Year Students				Seniors			
		Stetson		Selected Peers		Stetson		Selected Peers	
<i>Response Options</i>		<i>Count</i>	<i>%</i>	<i>Count</i>	<i>%</i>	<i>Count</i>	<i>%</i>	<i>Count</i>	<i>%</i>
Number of written papers or reports of 20 pages or more	None	247	84%	2156	81%	73	31%	755	33%
	Between 1-4	42	15%	427	16%	146	60%	1291	57%
	Between 5-10	3	1%	38	1%	19	8%	172	8%
	Between 11-20	0	0%	25	1%	2	1%	28	1%
	More than 20	1	0%	13	1%	1	0%	17	1%
	Total	293	100%	2659	100%	241	100%	2263	100%
Number of written papers or reports between 5 and 19 pages	None	20	7%	131	5%	19	9%	76	3%
	Between 1-4	136	46%	1129	43%	94	38%	734	32%
	Between 5-10	106	37%	1036	38%	88	36%	919	41%
	Between 11-20	29	10%	299	11%	25	10%	397	18%
	More than 20	2	1%	66	3%	15	6%	137	6%
	Total	293	100%	2661	100%	241	100%	2263	100%
Number of written papers or reports of fewer than 5 pages	None	6	2%	33	1%	14	6%	69	3%
	Between 1-4	76	26%	610	22%	40	16%	570	24%
	Between 5-10	104	35%	949	34%	63	28%	701	30%
	Between 11-20	76	26%	637	25%	70	29%	474	22%
	More than 20	31	11%	432	18%	54	22%	449	21%
	Total	293	100%	2661	100%	241	100%	2263	100%
Practicum, internship, field experience, co-op experience, or clinical assignment	Have not decided	44	16%	261	10%	18	8%	114	5%
	Do not plan to do	6	2%	51	2%	38	17%	300	14%
	Plan to do	212	74%	2090	79%	37	16%	208	9%
	Done	22	8%	215	9%	146	60%	1611	72%
	Total	284	100%	2617	100%	239	100%	2233	100%
Worked on a research project with a faculty member outside of course or program requirements	Have not decided	125	44%	1039	40%	27	12%	207	9%
	Do not plan to do	56	20%	493	19%	129	54%	1230	55%
	Plan to do	101	36%	959	37%	17	7%	138	6%
	Done	3	1%	120	5%	66	27%	657	29%
	Total	285	100%	2611	100%	239	100%	2232	100%
Quality of relationships with other students	1 Unfriendly, Unsupportive, Sense of Alienation	2	1%	19	1%	2	1%	20	1%
	2	8	3%	57	2%	2	1%	49	2%
	3	11	4%	125	5%	16	6%	95	4%
	4	32	12%	246	9%	26	11%	188	9%
	5	58	21%	519	20%	44	18%	393	18%
	6	96	34%	831	32%	73	31%	701	31%
	7 Friendly, Supportive, Sense of Belonging	77	27%	818	31%	75	31%	788	35%
	Total	284	100%	2615	100%	238	100%	2234	100%
	Quality of relationships with faculty members	1 Unavailable, Unhelpful, Unsympathetic	1	0%	11	0%	4	2%	13
2		10	4%	22	1%	1	1%	20	1%
3		11	4%	89	3%	12	5%	64	3%
4		34	12%	306	11%	20	9%	182	8%
5		79	27%	741	28%	45	19%	468	21%
6		100	35%	908	35%	81	34%	777	35%
7 Available, Helpful, Sympathetic		49	18%	538	21%	75	30%	711	32%
Total		284	100%	2615	100%	238	100%	2235	100%

		First-Year Students				Seniors			
		Stetson		Selected Peers		Stetson		Selected Peers	
<i>Response Options</i>		<i>Count</i>	<i>%</i>	<i>Count</i>	<i>%</i>	<i>Count</i>	<i>%</i>	<i>Count</i>	<i>%</i>
Preparing for class (studying, reading, writing, doing homework or lab work, analyzing data, rehearsing, and other academic activities)	0 hr/wk	2	1%	2	0%	1	1%	3	0%
	1-5 hr/wk	26	9%	197	8%	28	13%	265	12%
	6-10 hr/wk	73	26%	481	20%	38	16%	599	27%
	11-15 hr/wk	68	24%	633	25%	54	22%	485	21%
	16-20 hr/wk	53	18%	557	21%	44	18%	388	17%
	21-25 hr/wk	31	11%	354	13%	29	12%	252	11%
	26-30 hr/wk	10	4%	217	8%	22	9%	124	5%
	30+ hr/wk	21	7%	159	5%	22	9%	114	5%
	Total	284	100%	2600	100%	238	100%	2230	100%
Working for pay on campus	0 hr/wk	170	61%	1860	72%	128	54%	1325	59%
	1-5 hr/wk	12	4%	204	8%	21	9%	251	11%
	6-10 hr/wk	26	9%	331	12%	20	9%	317	14%
	11-15 hr/wk	66	22%	115	5%	44	18%	168	8%
	16-20 hr/wk	9	3%	59	2%	13	5%	108	5%
	21-25 hr/wk	0	0%	17	1%	3	1%	35	2%
	26-30 hr/wk	0	0%	3	0%	4	2%	7	0%
	30+ hr/wk	0	0%	13	1%	5	2%	18	1%
	Total	283	100%	2602	100%	238	100%	2229	100%
Working for pay off campus	0 hr/wk	211	75%	2154	83%	149	63%	1140	52%
	1-5 hr/wk	19	7%	123	4%	21	9%	188	8%
	6-10 hr/wk	15	5%	91	3%	12	5%	211	9%
	11-15 hr/wk	15	5%	76	3%	12	5%	183	8%
	16-20 hr/wk	11	4%	70	3%	23	9%	185	8%
	21-25 hr/wk	7	3%	27	1%	7	3%	119	5%
	26-30 hr/wk	4	1%	15	1%	4	2%	52	2%
	30+ hr/wk	1	0%	44	2%	10	4%	150	7%
	Total	283	100%	2600	100%	238	100%	2228	100%
Participating in co-curricular activities (organizations, campus publications, student government, fraternity or sorority, intercollegiate or intramural sports, etc.)	0 hr/wk	66	23%	436	17%	48	20%	429	19%
	1-5 hr/wk	106	37%	915	34%	77	32%	747	33%
	6-10 hr/wk	51	19%	569	21%	50	21%	418	19%
	11-15 hr/wk	22	8%	305	12%	20	8%	279	13%
	16-20 hr/wk	15	5%	164	7%	14	6%	147	7%
	21-25 hr/wk	9	3%	83	3%	19	8%	95	4%
	26-30 hr/wk	4	1%	49	2%	2	1%	31	1%
	30+ hr/wk	11	4%	81	3%	8	4%	83	4%
	Total	284	100%	2602	100%	238	100%	2229	100%
Relaxing and socializing (watching TV, partying, etc.)	0 hr/wk	7	3%	20	1%	1	0%	5	0%
	1-5 hr/wk	75	26%	534	20%	57	23%	502	22%
	6-10 hr/wk	84	30%	778	29%	66	27%	702	31%
	11-15 hr/wk	54	19%	559	22%	53	22%	467	21%
	16-20 hr/wk	31	12%	344	14%	34	15%	272	13%
	21-25 hr/wk	16	6%	177	7%	12	5%	128	6%
	26-30 hr/wk	6	2%	68	3%	4	2%	51	2%
	30+ hr/wk	10	4%	118	5%	11	5%	101	5%
	Total	283	100%	2598	100%	238	100%	2228	100%

		First-Year Students				Seniors			
		Stetson		Selected Peers		Stetson		Selected Peers	
<i>Response Options</i>		<i>Count</i>	<i>%</i>	<i>Count</i>	<i>%</i>	<i>Count</i>	<i>%</i>	<i>Count</i>	<i>%</i>
Providing care for dependents living with you (parents, children, spouse, etc.)	0 hr/wk	245	87%	2358	90%	193	82%	1900	85%
	1-5 hr/wk	20	7%	118	5%	19	7%	145	6%
	6-10 hr/wk	6	2%	40	2%	7	3%	56	3%
	11-15 hr/wk	6	2%	28	1%	5	2%	15	1%
	16-20 hr/wk	2	1%	13	1%	6	2%	27	1%
	21-25 hr/wk	0	0%	6	0%	2	1%	12	1%
	26-30 hr/wk	1	0%	7	0%	1	0%	6	0%
	30+ hr/wk	2	1%	27	1%	5	2%	65	3%
	Total	282	100%	2597	100%	238	100%	2226	100%
Commuting to class (driving, walking, etc.)	0 hr/wk	57	21%	705	27%	42	19%	285	13%
	1-5 hr/wk	184	65%	1689	65%	154	64%	1704	76%
	6-10 hr/wk	30	10%	133	5%	21	9%	163	7%
	11-15 hr/wk	5	2%	31	1%	13	5%	38	2%
	16-20 hr/wk	3	1%	13	1%	4	2%	15	1%
	21-25 hr/wk	1	0%	5	0%	2	1%	6	0%
	26-30 hr/wk	1	0%	6	0%	1	1%	3	0%
	30+ hr/wk	2	1%	14	1%	1	0%	13	1%
	Total	283	100%	2596	100%	238	100%	2227	100%
Study abroad	Have not decided	80	28%	472	18%	19	8%	121	5%
	Do not plan to do	33	11%	296	11%	140	59%	1067	47%
	Plan to do	166	58%	1785	68%	12	5%	105	5%
	Done	6	2%	61	3%	68	28%	939	43%
	Total	285	100%	2614	100%	239	100%	2232	100%
Which of the following best describes where you are living now while attending college?	Dormitory or campus housing	228	83%	2314	90%	88	37%	745	33%
	Residence, walking distance	10	4%	57	3%	33	14%	676	32%
	Residence, driving distance	29	11%	157	7%	94	40%	636	29%
	Fraternity or sorority house	7	3%	5	0%	22	9%	141	6%
	Total	274	100%	2533	100%	237	100%	2198	100%
Father's educational attainment	Did not finish HS	17	6%	67	3%	6	2%	60	3%
	Graduated from HS	52	19%	330	13%	38	16%	311	14%
	Attended, no degree	43	16%	246	10%	42	17%	198	9%
	Completed Associate's	19	7%	135	5%	19	8%	124	6%
	Completed Bachelor's	72	27%	840	34%	68	29%	712	33%
	Completed Master's	44	16%	526	21%	41	18%	468	22%
	Completed Doctorate	23	9%	369	14%	21	9%	316	14%
	Total	270	100%	2513	100%	235	100%	2189	100%
Mother's educational attainment	Did not finish HS	11	4%	38	2%	3	1%	56	2%
	Graduated from HS	54	20%	317	13%	48	20%	286	13%
	Attended, no degree	46	16%	295	12%	37	16%	272	12%
	Completed Associate's	37	13%	261	10%	26	11%	255	12%
	Completed Bachelor's	82	31%	964	38%	74	32%	777	35%
	Completed Master's	36	13%	518	21%	40	17%	472	22%
	Completed Doctorate	7	3%	122	5%	8	4%	76	3%
	Total	273	100%	2515	100%	236	100%	2194	100%

Tuition and Fees

Stetson - Historical

Year	Tuition	Undergraduate		Per Credit Hour Fees	
		Fees	Total	U-Grad	Graduate
1988 - 1989	\$7,370	\$305	\$7,675		\$170
1989 - 1990	\$8,100	\$340	\$8,440		\$185
1990 - 1991	\$8,900	\$385	\$9,285		\$200
1991 - 1992	\$9,610	\$410	\$10,020	\$320	\$215
1992 - 1993	\$10,660	\$450	\$11,110	\$355	\$235
1993 - 1994	\$11,510	\$485	\$11,995	\$385	\$255
1994 - 1995	\$12,315	\$555	\$12,870	\$410	\$275
1995 - 1996	\$13,110	\$590	\$13,700	\$440	\$295
1996 - 1997	\$14,100	\$635	\$14,735	\$470	\$315
1997 - 1998	\$15,100	\$665	\$15,765	\$500	\$350
1998 - 1999	\$15,850	\$800	\$16,650	\$525	\$370
1999 - 2000	\$16,640	\$870	\$17,510	\$550	\$390
2000 - 2001	\$17,475	\$910	\$18,385	\$580	\$410
2001 - 2002	\$18,350	\$960	\$19,310	\$610	\$430
*2002 - 2003	\$19,950	\$1275	\$21,225	\$650	\$430
*2003 - 2004	\$21,300	\$1340	\$22,640	\$685	\$450**
*2004 - 2005	\$22,730	\$1405	\$24,135	\$725	\$475**
*2005 - 2006	\$23,975	\$1475	\$25,450	\$760	\$500**
*2006 - 2007	\$25,450	\$1560	\$27,010	\$795	\$525**
2007 - 2008	\$27,100	\$1680	\$28,780	\$825	\$550-\$575**

*New Students

**DeLand campus, Celebration Education majors

2007-08 Graduate tuition - per credit hour

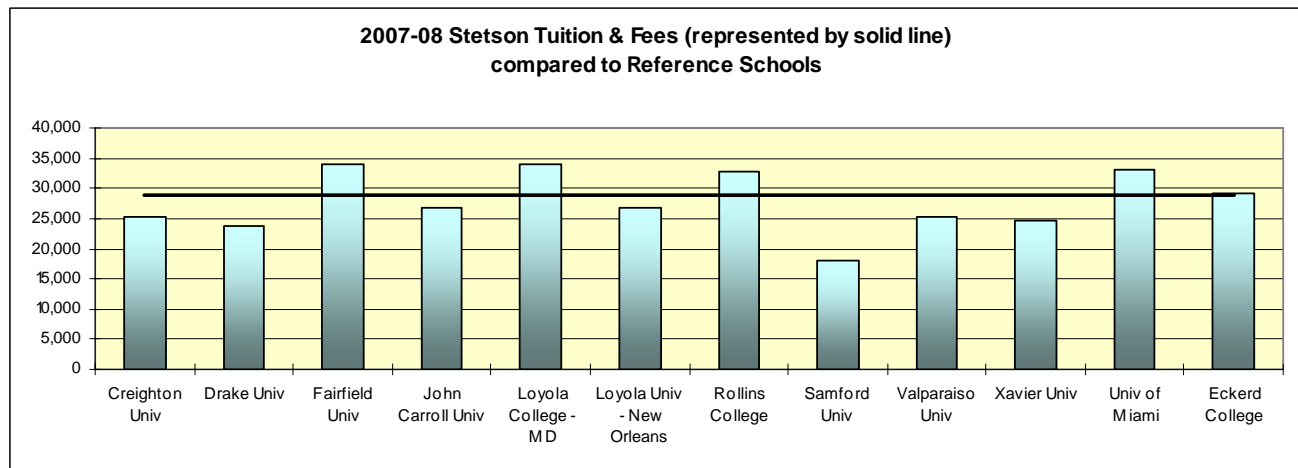
DeLand Campus – A & S Graduate programs	\$550
DeLand Campus – Business programs	\$575
Celebration Campus: Teacher Education	\$550
Counselor Education	\$550
Business Administration	\$675
Law School: JD/MBA	\$700

2007 - 08 Peer Schools Comparison - Tuition and Fees

Creighton University	25,262	Loyola Univ – New Orleans	26,718*
Drake University	23,692	Rollins College	32,640
Fairfield University	33,905	Samford University	17,920
John Carroll University	26,659	Valparaiso University	25,200
Loyola College – MD	33,940	Xavier University	24,600
		Stetson University	28,780
Other			
University of Miami	33,018	Eckerd College	29,136

Primary source: US News

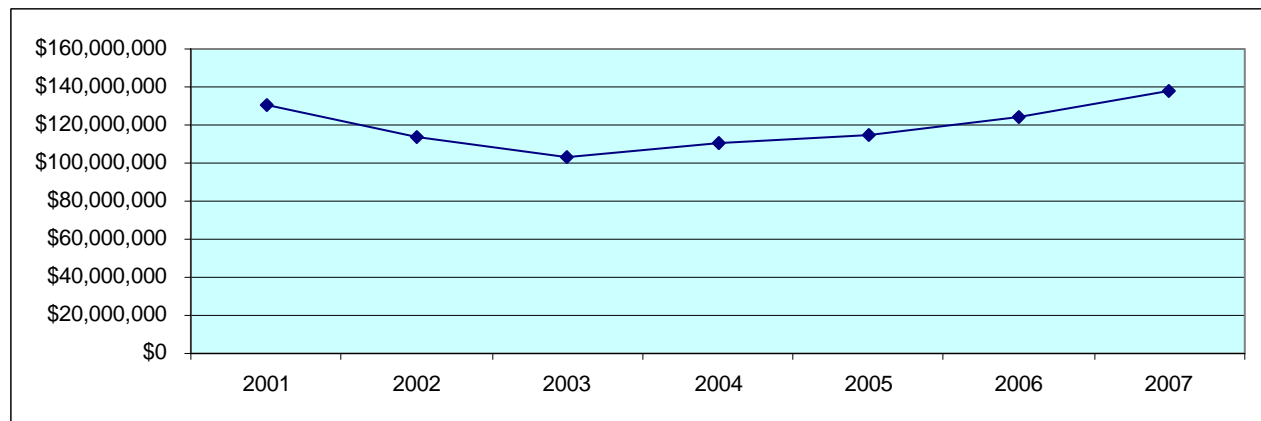
*from college website



Financial Information

Endowment - Market Value

5/31/01	5/31/02	5/31/03	5/31/04	5/31/05	5/31/06	5/31/07
\$130,407,000	113,679,000	103,268,623	111,045,000	114,753,000	124,428,000	137,557,000



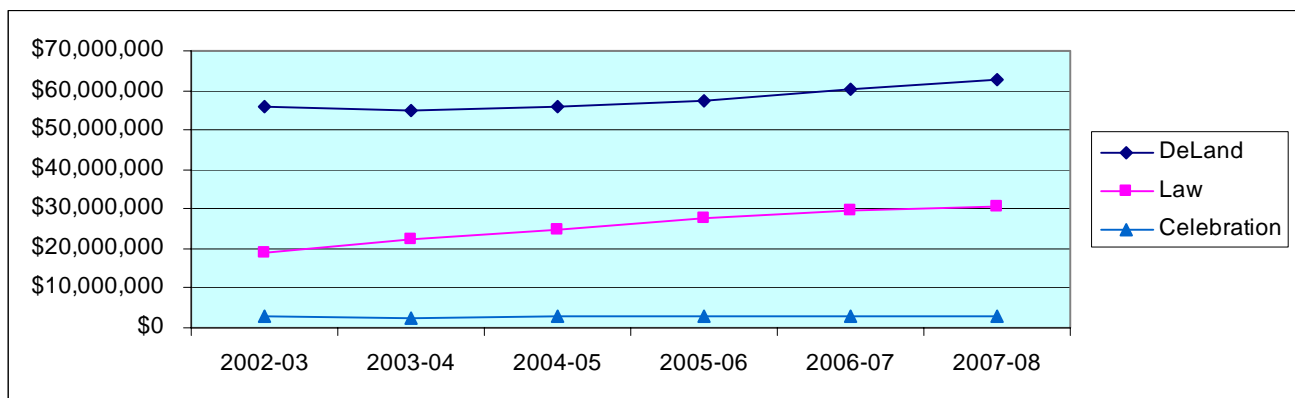
Endowment - Peer Schools

School	Market Value End FY06	National Rank in Endowment Assets
Creighton University	\$351,841,000	159th
Loyola Univ - New Orleans	\$325,657,000	164th
Rollins College	\$310,356,000	174th
Samford University	\$272,356,000	195th
Fairfield University	\$214,759,000	223rd
Valparaiso University	\$166,852,000	265th
Loyola College - MD	\$157,757,000	273rd
John Carroll University	\$156,231,000	274th
Drake University	\$131,549,000	301st
Stetson University	\$124,428,000	309th
Xavier University	\$108,089,000	332nd

Source: 2006 NACUBO Endowment Study

Annual Budget

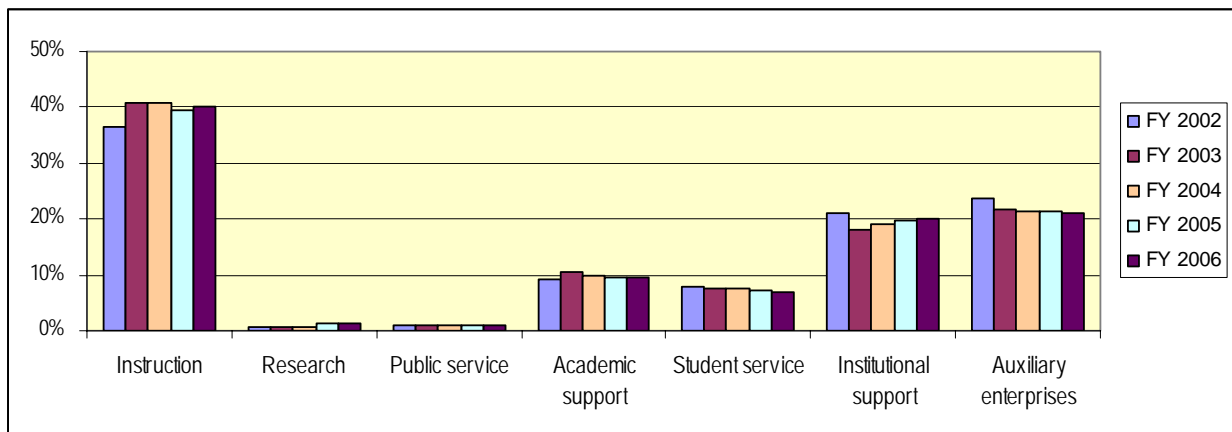
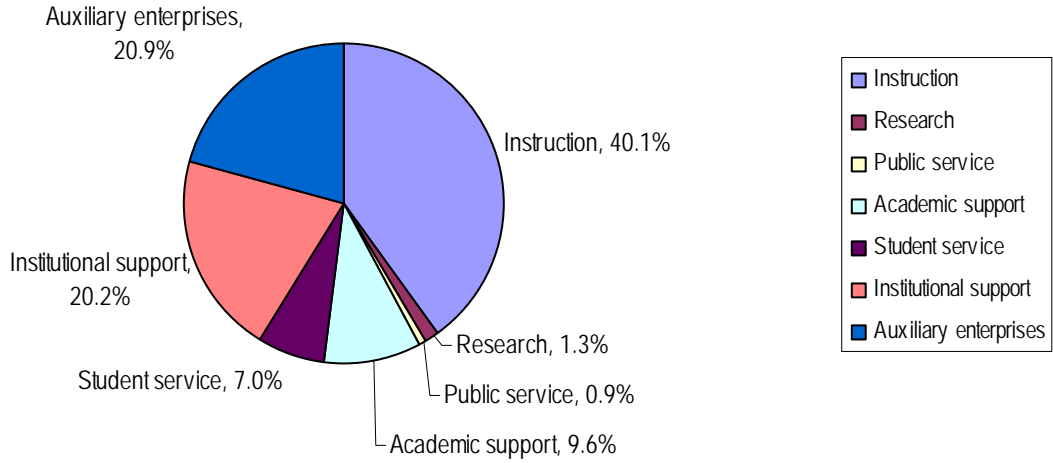
	2002-03	2003-04	2004-05	2005-06	2006-07	2007-08
DeLand	\$55,670,000	\$54,902,000	\$56,105,000	\$57,236,000	\$60,099,000	\$62,737,000
Law	\$19,188,000	\$22,287,000	\$25,013,000	\$27,576,000	\$29,625,000	\$30,804,000
Celebration	\$3,118,000	\$2,550,000	\$2,864,000	\$2,691,000	\$2,891,000	\$2,951,000



Expenses

Finance - Fiscal year 2006

(source: IPEDS Finance Report)

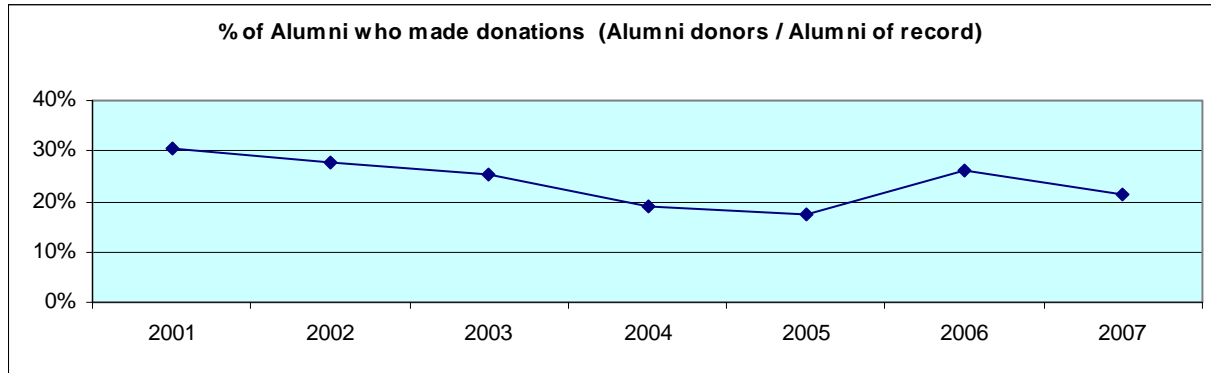


Alumni Giving Profile

	2001	2002	2003	2004*	2005*	2006*	2007*
Alumni of record	14,911	14,718	14,341	12,422	12,935	8,802	10,147
Alumni solicited	10,255	10,116	9,528	6,742	7,384	8,221	9,574
Alumni donors	4,534	4,069	3,653	2,390	2,274	2,286	2,155
Giving percent of record	30.4%	27.6%	25.5%	19.2%	17.6%	26.0%	21.2%

Source: CAE Report

*undergraduate only



Student Financial Aid

Scholarships/Grants - Undergraduates

	2006-07		2007-08	
	Scholarships & Grants		Scholarships & Grants	
	Total	Average	Total	Average
Institutional	\$24,003,615	\$11,766	\$25,818,390	\$12,981
Federal Need-based	\$1,815,201	\$3,682	\$1,842,374	\$3,971
Federal Non-need-based	\$36,000	\$1,500	\$34,500	\$1,500
Florida Merit	\$3,010,309	\$2,588	\$3,042,989	\$3,004
Florida Need-based	\$469,300	\$1,282	\$573,334	\$1,575
Florida Non-need-based	\$4,563,875	\$2,783	\$4,560,196	\$2,981
External	\$469,176	\$2,418	\$553,678	\$2,977
TOTAL Scholarships/Grants	\$34,367,476	\$15,977	\$36,425,461	\$17,247

Total Aid and Self-Help* (2007-2008)

	First Year Students	Full-time Undergrads
Total financial aid	\$13,677,671	\$51,429,879
Average financial aid package	\$24,914	\$24,502
Total Self-help	\$2,167,487	\$11,245,133
Average self-help	\$6,881	\$8,526

*Self help includes work-study and loans, excludes PLUS loans.

ACADEMIC PROGRAMS

Degrees and Programs Offered (2007-08)

College of Arts and Sciences

American Studies	B.A.	International Studies	B.A.
Aquatic & Marine Biology*	B.S.	Latin American Studies	B.A.
Art	B.A.	Mathematics	B.A., B.S.
Biology	B.A., B.S.	Modern Languages	
Biochemistry*	B.S.	French	B.A.
Chemistry	B.S.	German	B.A.
Communication Studies	B.A.	Spanish	B.A.
Computer Information Systems*	B.S.	Molecular Biology*	B.S.
Computer Science	B.S.	Music	B.A.
Digital Arts	B.A.	Philosophy	B.A.
Economics	B.A., B.S.	Physics	B.S.
Elementary Education*	B.A., B.S.	Political Science	B.A., B.S.
English	B.A.	Psychology	B.A., B.S.
Environmental Science	B.A., B.S.	Religious Studies	B.A.
Geography	B.A., B.S.	Russian Studies	B.A.
History	B.A.	Secondary Education**	B.A., B.S.
Humanities	B.A.	Social Science*	B.A.
Integrative Health Sciences		Sociology	B.A., B.S.
Health Science	B.S.	Sport Management	B.A.
Rehabilitative Studies*	B.S.	Theatre Arts	B.A.

* Minor NOT available

** Secondary Education programs are available in Biology, English, Modern Languages, Mathematics and Social Science

Minors only

Africana Studies	Art History & Studio Art	Journalism
Anthropology	Creative Writing	Russian
Applied Ethics	Health Care Issues	Women and Gender Studies

Cooperative Programs

Engineering	Marine Science	Pre-Law
Forestry and Environmental Studies	Medical Technology	Pre-Med

School of Business Administration

Accounting Information Systems	B.B.A.	International Business*	B.B.A.
Economics*	B.B.A.	Management	B.B.A.
Family Business	B.B.A.	Management Information Systems	B.B.A.
Finance	B.B.A.	Marketing	B.B.A.
General Business	B.B.A.		

* Minor NOT available

Minors only

Applied Statistics	Business Law	Entrepreneurship
--------------------	--------------	------------------

School of Music

B.A. Music
B.A. Digital Arts - Sound Track

B.M.E. Instrumental/General
B.M.E. Vocal/General

B.M. Performance
Guitar
Orchestral Instrument
Piano/Organ
Voice

B.M. Music Technology
B.M. Theory and Composition
B.M. Elective Studies in a Specific Outside Field
B.M. Elective Studies in Business

Minors

General Music
(must be added to a non-music degree)

Church Music
(must be added to a music degree)

Graduate

Curriculum and Instruction	Ed.S.	Mental Health Counseling	M.S.
Educational Leadership	M.Ed., Ed.S.	Reading Education	M.Ed.
English	M.A.	School Counseling	M.S.
Exceptional Student Education/ESOL	M.Ed.	Executive Master of Business Administration	M.B.A.
Marital, Couple, & Family Counseling/Therapy	M.S.	Master of Accountancy	M.Acc.
		Master of Business Administration	M.B.A.

Enrollment by Major - Undergraduate (Fall 2007)

Includes Double Majors

College of Arts and Sciences

Major	Frequency	% of A&S Majors	Major	Frequency	% of A&S Majors
American Studies	5	0.4%	Geography	1	0.1%
Aquatic & Marine Biology	20	1.7%	German	6	0.5%
Art	32	2.7%	Health Science	55	4.6%
Biochemistry	18	1.5%	History	37	3.1%
Biology	106	8.9%	Humanities	13	1.1%
Chemistry	13	1.1%	International Studies	19	1.6%
Communication Studies	72	6.1%	International Theatre	1	0.1%
Computer Information Systems	3	0.3%	Latin American Studies	1	0.1%
Computer Science	27	2.3%	Mathematics	23	1.9%
Digital Arts-Art Track	10	0.8%	Med Tech	2	0.2%
Digital Arts-Computer Science	5	0.4%	Molecular Biology	12	1.0%
Digital Arts-Music Track	1	0.1%	Philosophy	12	1.0%
Digital Arts-Sound Track	6	0.5%	Physics	23	1.9%
Economics – BA	11	0.9%	Political Science	117	9.8%
Education, Elementary	77	6.5%	Psychology	150	12.6%
Education, Secondary (English)	4	0.3%	Rehabilitative Studies	21	1.8%
Education, Secondary (German)	2	0.2%	Religious Studies	28	2.4%
Education, Secondary (Math)	3	0.3%	Russian Studies	10	0.8%
Education, Secondary (Soc Sci)	8	0.7%	Social Science	5	0.4%
Education, Secondary (Spanish)	2	0.2%	Sociology	26	2.2%
English	78	6.6%	Spanish	26	2.2%
Environmental Science	21	1.8%	Sport Management	51	4.3%
French	9	0.8%	Theatre Arts	18	1.5%
			Total A&S Majors	1190	100.0%

School of Business

Major	Frequency	% of Bus. Majors
Accounting Info Systems	69	9.1%
E-Business Technology	11	1.5%
Economics – BBA	2	0.3%
Family Business	24	3.2%
Finance	155	20.4%
General Business	214	28.2%
International Business	101	13.3%
Management	67	8.8%
Management Info Systems	14	1.8%
Marketing	101	13.3%
Total Business Majors	758	100.0%

School of Music

Major	Frequency	% of Mus. Majors
BM Outside Field-Business	19	8.3%
BM Outside Field-Digital Art	1	0.4%
BM Outside Field	19	8.3%
Guitar	9	3.9%
Music Ed-Instrumental/Gen	49	21.5%
Music Education-Vocal	24	10.5%
Music Technology	5	2.2%
Orchestral Instrument	39	17.1%
Piano/Organ	13	5.7%
Theory & Comp-Comp	11	4.8%
Theory & Comp:Theory	3	1.3%
Voice	36	15.8%
Total Music Majors	228	100.0%

Discovery (Undeclared)	235
No Major Necessary, visiting, transient, etc.	9

Enrollment by Minor - Undergraduate (Fall 2007)

Includes Double Minors

	School of Student's Major				School of Student's Major		
	A & S	Business	Music		A & S	Business	Music
Accounting Minor	0	5	0	German	8	3	2
Africana Studies	0	0	1	Health Care Issues	5	1	0
American Studies	2	1	0	Health Science	10	0	0
Anthropology	5	0	0	History	17	2	0
Applied Ethics Minor	1	0	0	Humanities	6	0	0
Art	7	2	0	International Studies	7	0	0
Art History	13	1	0	Journalism	27	3	0
Biology	8	0	0	Latin American Studies	4	1	0
Business Economics	0	1	0	Management	4	9	0
Business Law	20	55	0	Management Info Systems	1	18	0
Chemistry	6	0	0	Marketing	12	7	0
Church Music – Voice	0	0	1	Mathematics	9	0	0
Communication Studies	6	3	0	Music Minor	19	9	1
Computer Science	3	0	0	Philosophy	8	0	0
Digital Arts	7	7	0	Physics	2	1	0
E-Business Technology	4	16	1	Political Science	14	7	0
Economics	3	1	0	Psychology	21	9	0
Education	18	3	1	Religious Studies	21	4	1
English	10	4	1	Russian	5	0	0
English – Creative Writing	17	2	1	Russian Studies	1	1	0
Environmental Science	4	1	0	Sociology	14	4	0
Family Business	4	9	0	Spanish	42	32	2
Finance	1	9	0	Sport Management	2	15	0
French	5	6	0	Theatre Arts	6	1	0
General Business Admin	31	0	0	Women & Gender Studies	10	1	0
Geography	1	0	0	TOTALS	451	254	12

Enrollment by Major - Graduate (Fall 2007)

Major	#	%	Major	#	%
Curriculum and Instruction	4	0.9%	Master of Accountancy	19	4.5%
Educational Leadership	56	13.1%	Master of Business Admin	133	31.2%
English	6	1.4%	Mental Health Counseling	31	7.3%
Exceptional Education	2	0.5%	No Major Necessary*	36	8.5%
Law (MBA/JD)	63	14.8%	Reading Education	23	5.4%
Marital, Couple & Fam CSL/Ther	30	7.0%	School Counseling	23	5.4%
			TOTALS	426	

*20 Arts & Sciences, 16 Business

Enrollment by Major - Undergraduate (Historical)

Includes Double Majors

Arts & Sciences	2000	2001	2002	2003	2004	2005	2006	2007
American Studies	6	5	5	5	8	12	8	5
Aquatic & Marine Biology		7	13	16	20	19	23	20
Art	42	36	35	34	36	37	35	32
Biochemistry	31	29	20	15	17	23	25	18
Biology	110	113	95	105	98	94	108	106
Biology - Molecular	3	5	4	3	6	8	8	12
Biology – special		1	2					
Chemistry	14	17	14	12	16	12	16	13
Communication Studies	73	72	69	57	73	78	68	72
Computer Info Systems	11	14	4	2	3	3	2	3
Computer Science	49	34	26	18	13	24	18	27
Digital Arts	82	67	63	51	44	28	28	22
Economics	4	11	10	7	5	5	5	11
Education - Elementary	78	75	89	99	92	88	80	77
Education – General		10	1	17				
Education - Secondary	17	21	29	21	15	21	12	19
English	72	68	67	83	97	90	94	78
Environmental Science	19	19	21	17	13	20	17	21
Foreign Language - French	11	8	6	8	6	7	10	9
Foreign Language - German	5	3	8	6	7	12	8	6
Foreign Language - Spanish	20	21	17	17	17	22	28	26
Geography	6	4	2	2			1	1
History	31	20	34	42	39	36	42	37
Humanities	4	8	10	8	9	12	15	13
Integ Health - Health Science		15	39	35	47	45	53	55
Integ Health -Rehab Studies	2	9	18	18	17	19	23	21
International Studies	6	13	18	18	29	27	15	19
International Theatre								1
Latin American Studies	1	1	3	3	2	3	2	1
Mathematics	13	9	10	15	19	31	22	23
Med Tech	1		1		1	2	2	2
Music Lib. Arts	3	7	3	9	7	9	7	
Philosophy	13	9	11	14	14	22	20	12
Physics	21	17	16	15	14	15	20	23
Political Science	102	99	108	113	106	116	131	117
Psychology	132	135	146	139	143	139	137	150
Religious Studies	16	16	29	28	34	33	20	28
Russian Studies	2	2	16	13	13	10	9	10
SES-Athletic Training	22	14	5	2				
SES-Exercise Science	45	27	7	3				
SES-Movement Therapy	13	1						
SES-Sport Communications	1							
Social Science	4	3	2	1	7	8	4	5
Sociology	45	35	37	42	38	39	30	26
Sport Admin/Mgmt	44	40	35	42	48	46	44	51
Theatre Arts	11	13	14	17	21	22	26	18
Total	1185	1133	1159	1172	1241	1237	1216	1190

Enrollment by Major - Undergraduate (Historical), continued

Business	2000	2001	2002	2003	2004	2005	2006	2007
Accounting Info Systems	81	60	55	59	60	75	80	69
Business Economics	10		14	14	9	7	6	2
Computer Info Systems	32	30	17	4				
Electronic Business Tech		13	40	37	37	24	14	11
Family Business					5	19	18	24
Finance	88	99	102	107	93	91	103	155
General Business	239	232	209	216	199	217	241	214
International Business	79	86	77	63	65	82	80	101
Management	72	73	72	81	89	88	79	67
Management Info Systems								14
Marketing	104	110	119	107	110	99	111	101
Total	705	703	705	688	667	702	732	758

Music	2000	2001	2002	2003	2004	2005	2006	2007
Bach of Music w/Bus Adm	16	14	13	15	5	7	14	19
Bach of Music w/outside Field	6	13	20	19	27	23	17	19
Bachelor of Music w/Dig Arts	5	8	5	4	3	2	5	1
Music Education	74	71	69	70	79	80	85	73
Music Lib. Arts	3	7	3	9	7	9		
Music Technology								5
Musical Theater					1	1		
Performance:								
Guitar	10	10	8	7	8	8	6	9
Orchestral Instrument	14	21	21	26	24	30	28	39
Piano/Organ	7	11	9	17	17	10	13	13
Voice	38	54	36	34	26	30	31	36
Theory & Composition	16	11	13	9	10	11	12	14
Undeclared (Music)	1	1						
Total	187	214	194	201	200	202	211	228

No major necessary, visiting transient				12	4	12	8	9
Discovery	192	220	193	226	287	233	244	235

Degrees Awarded by Major - Undergraduate (Historical)

(includes second majors)

Arts & Sciences	7/1/00 to 6/30/01	7/1/01 to 6/30/02	7/1/02 to 6/30/03	7/1/03 to 6/30/04	7/1/04 to 6/30/05	7/1/05 to 6/30/06	7/1/06 to 6/30/07
American Studies	2	2	3		3	2	3
Art	8	11	8	5	7	9	11
Biology	24	19	24	26	25	21	17
Biology, Aquatic					4	1	2
Biology, Molecular			1	1	3	2	
Bio-Chemistry	4	10	11	1	3	4	5
Chemistry		2	3	2	1	2	2
Communications	19	22	21	16	19	12	21
Communications, Other	2						
Computer Information Systems						1	
Computer Science	9	5	7	6	1	3	3
Digital Arts	16	15	20	11	15	8	5
Economics	1	2	3	2	2	1	1
English	22	23	11	20	21	21	24
Environmental Science / Studies	5	7	4	7	3	6	3
Modern Language: French	2	3	1	2	3	1	2
Modern Language: German	2		1		1	3	3
Modern Language: Spanish	8	8	6	5	12	3	9
Geography	3	2		2			
Health Sciences		2	10	3	17	10	11
History	6	4	5	8	10	17	10
Humanities	4	2	4	3	1	1	6
International Studies/Sciences	2	1	4	2	6	7	4
Latin American Studies				1	1		1
Linguistics, Comparative Study				1			
Mathematics	3	4	3	4	2	6	3
Medical Technology							
Music – Liberal Arts		3			4		5
Philosophy	2	4	4	4	6	6	8
Physics	5	4	1	5	2	2	2
Political Science	12	19	20	24	18	21	26
Physiological PSY, Psy-biology		1					
Psychology	32	29	31	34	27	39	29
Religious Studies	5	6	9	6	12	12	8
Russian Studies	1		2	2	6	4	2
SES: Athletic Trng, Sports Med	3	6	2	2			
SES: Ex Sci & Mvmt Therapy	20	15	3	3	5	5	4
SES: Sport & Fitness Admin	12	12	10	10	6	17	10
Social Sciences	3	7	2	4	2	3	1
Sociology	22	11	10	13	8	15	9
Teacher Educ – Elem	16	18	18	28	21	27	15
Teacher Educ - English							
Teacher Educ – General					1	1	
Theatre Arts	3	3	1	3	5	5	8
Total	278	282	263	266	283	298	273

Degrees Awarded by Major - Undergraduate (Historical), continued

Business	7/1/00 to 6/30/01	7/1/01 to 6/30/02	7/1/02 to 6/30/03	7/1/03 to 6/30/04	7/1/04 to 6/30/05	7/1/05 to 6/30/06	7/1/06 to 6/30/07
Accounting	20	18	10	20	16	14	21
Business Administration	45	29	30	36	33	35	43
Business Economics	2	3	1	4	3	3	
Electronic Business Tech			10	14	15	7	4
Family Business						5	2
Finance	26	34	30	36	32	30	25
Information Resources (CIS)	12	6	10	3			
International Business	8	15	18	15	9	14	13
Management	16	24	29	26	28	22	31
Marketing	41	39	43	26	39	28	29
Total Business	170	168	181	180	175	158	168

Music							
Music Perf – Piano & Organ	1	1		3	3	2	6
Music Perf – Orch Instrument	2	8	1	2	4	4	8
Music Perf – Viola, Guitar		2	2	1	1	2	1
Music Perf – Voice	7	4	6	6	4	1	7
Music – Other	1	5	12	9	12	16	6
Music Theory & Composition	2	1	2	2	1	6	1
Teacher Educ – Music	12	16	19	10	5	10	27
Total Music	25	37	42	33	30	41	56

TOTAL	473	487	486	479	488	497	497
--------------	------------	------------	------------	------------	------------	------------	------------

Degrees Awarded - by Degree Type (Historical)

	2000-01	2001-02	2002-03	2003-04	2004-05	2005-06	2006-07
BACHELORS	473	487	486	479	488	497	497
Arts & Sciences	278	282	263	266	283	298	274
Business	170	168	181	180	175	158	168
Music	25	37	42	33	30	41	55
MASTERS	119	136	118	182	181	223	190
Arts & Sciences	40	42	53	78	76	96	74
Business	79	94	65	104	105	127	116
LAW	257	240	255	284	254	304	362

College of Law

Law School Tuition & Fees – Full-time

2000-01	2001-02	2002-03	2003-04	2004-05	2005-06	2006-07	2007-08
\$21,165	\$21,905	\$22,785	\$23,924	\$24,760	\$26,280	\$27,860	\$29,240

Law School Tuition – Full-time Summer Session

2000	2001	2002	2003	2004	2005	2006	2007
\$5,305	\$5,475	\$5,695	\$5,980	\$6,200	\$6,550	\$6,950	7,298

Law School Key Facts

- Ranked among the nation's top 100 law schools by *U.S. News & World Report*
- Ranked No. 1 for trial advocacy and No. 5 for legal writing by *U.S. News & World Report*
- Small classes and individual attention to student needs
- Nationally acclaimed faculty who excel in their fields
- State-of-the-art library and classrooms
- Seven courtrooms
- One of few law schools to share space with a working court, Florida's Second District Court of Appeal
- Centers for Excellence in Advocacy, Elder Law, Higher Education Law and Policy, and International Law
- Home to the National Clearinghouse for Science, Technology and the Law, and Institutes for Biodiversity Law and Policy and Caribbean Law and Policy
- Home to three academic journals, including the *Stetson Law Review*
- Honors program for top-ranked students
- 2005 world champions and 2006 silver medalists at the Vis International Arbitration Moot in Vienna, Austria
- Vibrant campus life with diverse student organizations, interscholastic activities and competitions
- Summer programs in Buenos Aires, Argentina; Tianjin, China; Granada, Spain; The Hague, Netherlands; and Freiburg, Germany
- The first law school in Florida to require pro bono service by students and faculty
- Excellent career development services
- Campuses in beautiful Gulfport and Tampa, Florida

For more information on the College of Law, visit www.law.stetson.edu.

STUDENT INFORMATION

SAT / ACT Scores

Fall 2007 First Year Students

	75th Percentile	25th Percentile	Average
SAT Math	590	480	537
SAT Reading	600	500	553
SAT Total	1200	1030	1122
ACT Math	25	19	23
ACT English	27	20	23
ACT Composite	26	21	23
High School GPA	4.06	3.30	3.70

92% submitted SAT scores
 35% submitted ACT scores
 99% submitted High School GPA

Range of SAT / ACT Scores

Fall 2007 First Year Students

<u>SAT</u>	<u>Reading</u>	<u>Math</u>	<u>ACT</u>	<u>Composite</u>	<u>English</u>	<u>Math</u>
700 - 800	6.5%	2.7%	30 - 36	6.2%	11.9%	5.7%
600 - 699	23.3%	19.6%	24 - 29	42.0%	34.2%	37.8%
500 - 599	45.6%	45.2%	18 - 23	46.1%	44.1%	46.1%
400 - 499	23.3%	29.0%	12 - 17	5.7%	9.3%	10.4%
300 - 399	1.4%	3.5%	6 - 11	--	.5%	--

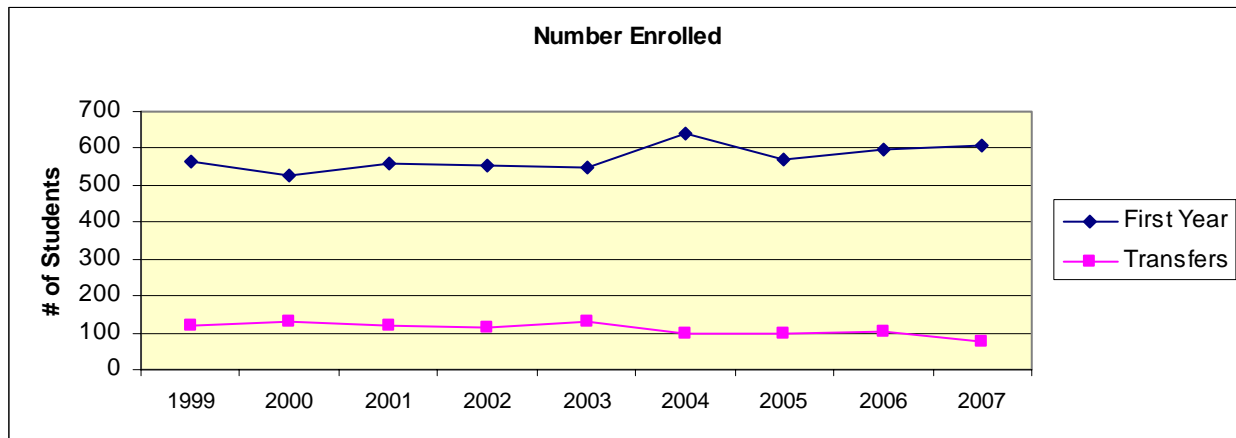
First Year & Transfer Students

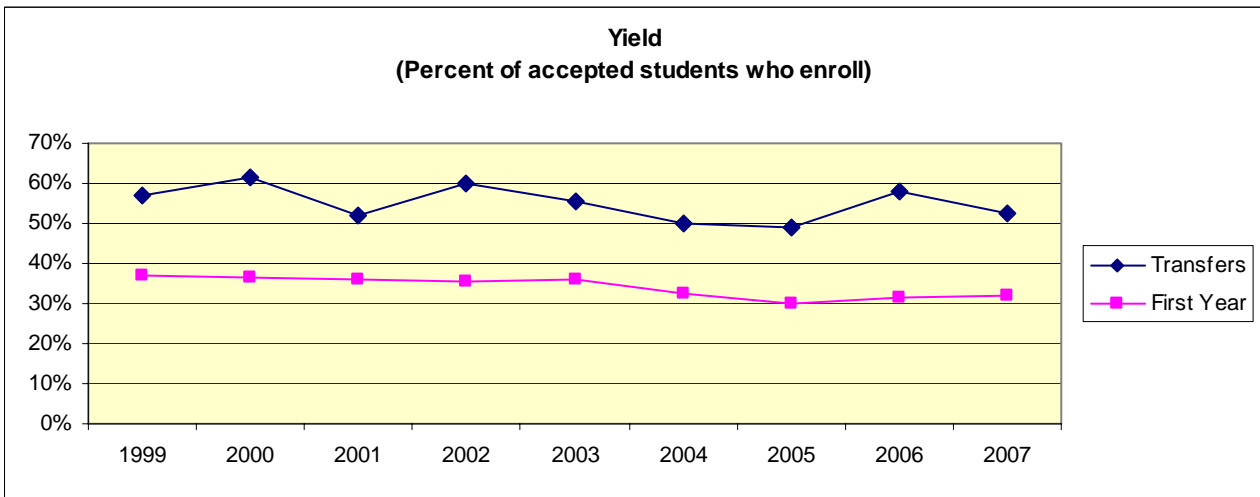
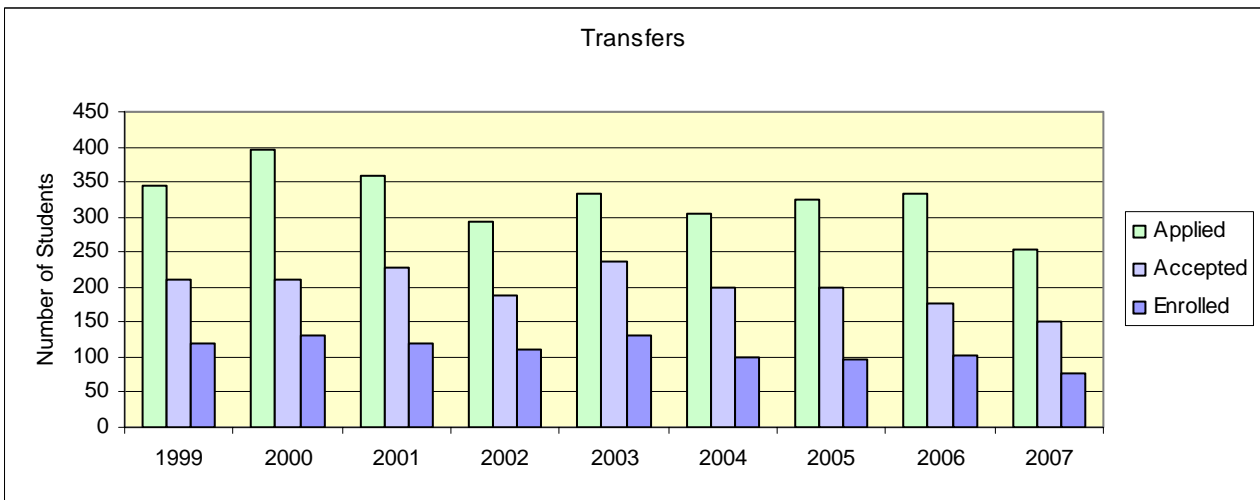
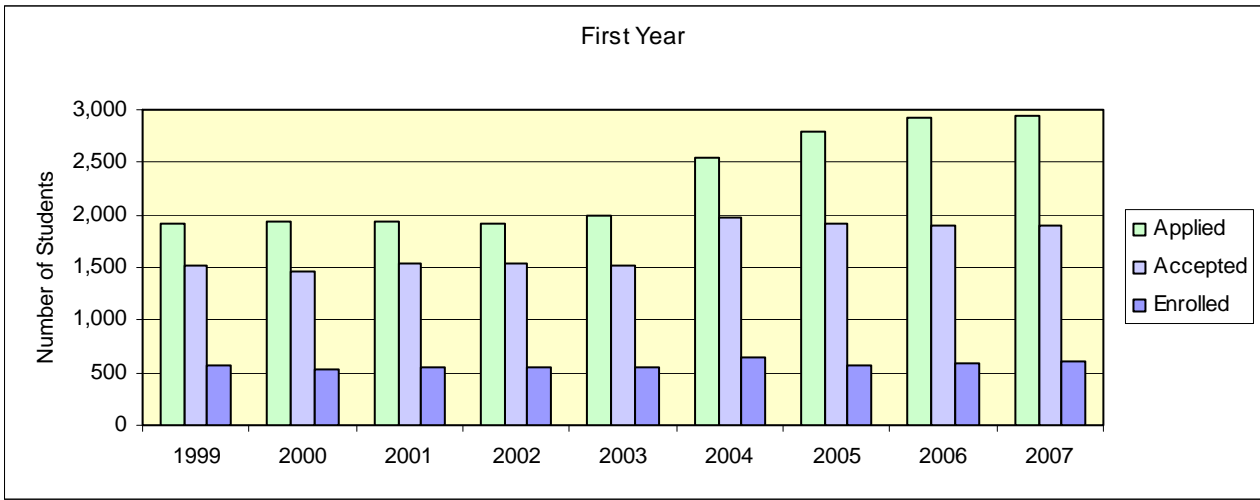
(Source: Admission's Office "Entering Class Profile")*

First Year	1999	2000	2001	2002	2003	2004	2005	2006	2007
Inquired**	25,866	30,980	24,542	26,826	34,558	30,530	27,630	26,791	31013
Applied	1,913	1,941	1,942	1,919	1,992	2,540	2,782	2,919	2947
Accepted	1,523	1,456	1,545	1,542	1,527	1,980	1,918	1,896	1890
Enrolled									
Men	228	252	244	222	244	262	246	240	256
Women	335	277	313	329	302	379	325	356	350
TOTAL	563	529	557	551	546	641	571	596	606
Yield rate for accepted students	37.0%	36.3%	36.1%	35.7%	35.8%	32.4%	29.8%	31.4%	32.0%
Transfers									
Inquired	1,696	1,771	1,815	1,929	1,421	1,024	1,029	674	591
Applied	344	397	359	293	334	306	325	334	254
Accepted	210	211	228	187	237	200	200	176	150
Enrolled									
Men	48	51	47	36	52	37	40	41	31
Women	72	79	72	76	79	63	58	61	45
TOTAL	120	130	119	112	131	100	98	102	76
Yield rate for accepted students	57.1%	61.6%	52.2%	59.9%	55.3%	50.0%	49.0%	58.0%	52.6%
Special	12	14	20	17	19	21	18	17	10
TOTAL	695	673	696	684	696	762	687	713	692

*This report is based upon the Admission's Office "Entering Class Profile" prepared in August for the first university faculty meeting each year. Final statistics for matriculating students are prepared by the Institutional Research Office in September for reporting purposes and may differ based on the criteria for determining "new" students and the time of the download.

** "Inquired" includes mailing lists purchased from College Board and other sources.





Student Life Statistics*

Fall 2007	First-time, first year students	Undergraduates
Percent from out of state	20%	19%
Percent of men who join fraternities	29%	27%
Percent of women who join sororities	27%	25%
Percent of who live on campus	90%	72%
Percent who live off campus or commute	10%	18%
Percent of students 25 and older	0	5%
Average of full-time students	18	20
Average of all students (full and part-time)	18	20

*CDS Methodology

Enrollment of New Students by School

	Fall 2002	Fall 2003	Fall 2004	Fall 2005	Fall 2006	Fall 2007
First Year A & S	244	217	290	260	253	278
First Year Business	137	130	136	139	127	120
First Year Music	48	57	48	55	58	72
First Year Discovery	115	142	162	117	157	125
Total First Year Freshmen	544	546	636	571	595	595
New Transfers A & S	58	62	56	56	55	38
New Transfers Business	39	37	19	27	30	16
New Transfers Music	6	19	12	10	11	18
New Transfers Discovery	3	8	8	6	6	2
Total New Transfers	106	126	95	99	102	74
Total New A & S	302	279	346	316	308	316
Total New Business	176	167	155	166	157	136
Total New Music	54	76	60	65	69	90
Total New Discovery	118	150	170	123	163	127
Total New Students	650	672	731	670	697	669

Notes about these students counts:

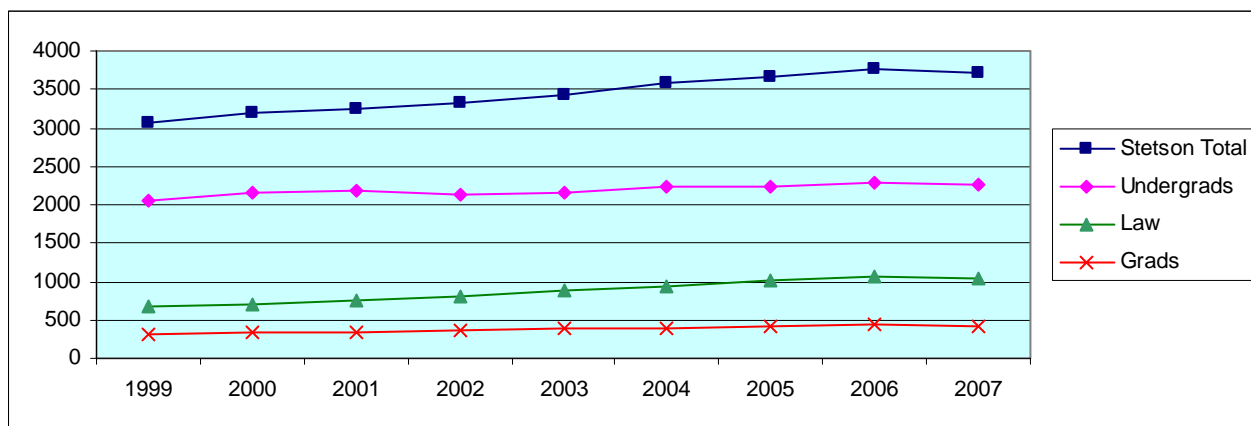
- 1) They include only students who were in the fall census counts -- i.e., they do not include students who paid deposits to attend, but did not make it to the census count.
- 2) They do not include visiting students or transfer transient students which are reported as "new students" in some Admissions reports -- i.e., the counts include only students who we expect to return in subsequent terms.
- 3) They include only DeLand students -- i.e., no Celebration Passport undergrads.

Enrollment

Census Headcount, Fall Semester (Historical)

	<u>1999</u>	<u>2000</u>	<u>2001</u>	<u>2002</u>	<u>2003</u>	<u>2004</u>	<u>2005</u>	<u>2006</u>	<u>2007</u>
<u>Full-time</u>									
Undergraduates	1965	2064	2063	2063	2070	2163	2160	2185	2176
Graduates	48	63	61	81	93	123	141	146	203*
Post-Bacc	<u>13</u>	<u>6</u>	<u>6</u>	<u>5</u>	<u>4</u>	<u>6</u>	<u>8</u>	<u>14</u>	<u>6</u>
DeLand	2026	2133	2130	2149	2167	2292	2309	2345	2385
College of Law	<u>658</u>	<u>680</u>	<u>727</u>	<u>711</u>	<u>736</u>	<u>784</u>	<u>825</u>	<u>853</u>	<u>821</u>
University (Full-time)	2684	2813	2857	2860	2903	3076	3134	3198	3206
<u>Part-time</u>									
Undergraduates	97	91	111	79	91	67	74	88	88
Graduates	185	219	227	250	259	247	245	255	186*
Post-Bacc	<u>72</u>	<u>48</u>	<u>37</u>	<u>30</u>	<u>27</u>	<u>26</u>	<u>21</u>	<u>17</u>	<u>31</u>
DeLand	354	358	375	359	377	340	340	360	305
College of Law	<u>15</u>	<u>28</u>	<u>23</u>	<u>99</u>	<u>159</u>	<u>161</u>	<u>191</u>	<u>204</u>	<u>210</u>
University (Part-time)	369	386	398	458	536	501	531	564	515
<u>Total</u>									
Undergraduates	2062	2155	2174	2142	2161	2230	2234	2273	2264
Graduates	233	282	288	331	352	370	386	401	389
Post-Bacc	<u>85</u>	<u>54</u>	<u>43</u>	<u>35</u>	<u>31</u>	<u>32</u>	<u>29</u>	<u>31</u>	<u>37</u>
DeLand	2380	2491	2505	2508	2544	2632	2649	2705	2690
College of Law	<u>673</u>	<u>708</u>	<u>750</u>	<u>810</u>	<u>895</u>	<u>945</u>	<u>1016</u>	<u>1057</u>	<u>1031</u>
TOTAL University	3053	3199	3255	3318	3439	3577	3665	3762	3721

*Counseling students with 6 credit hours are full-time



Census Enrollment by Campus

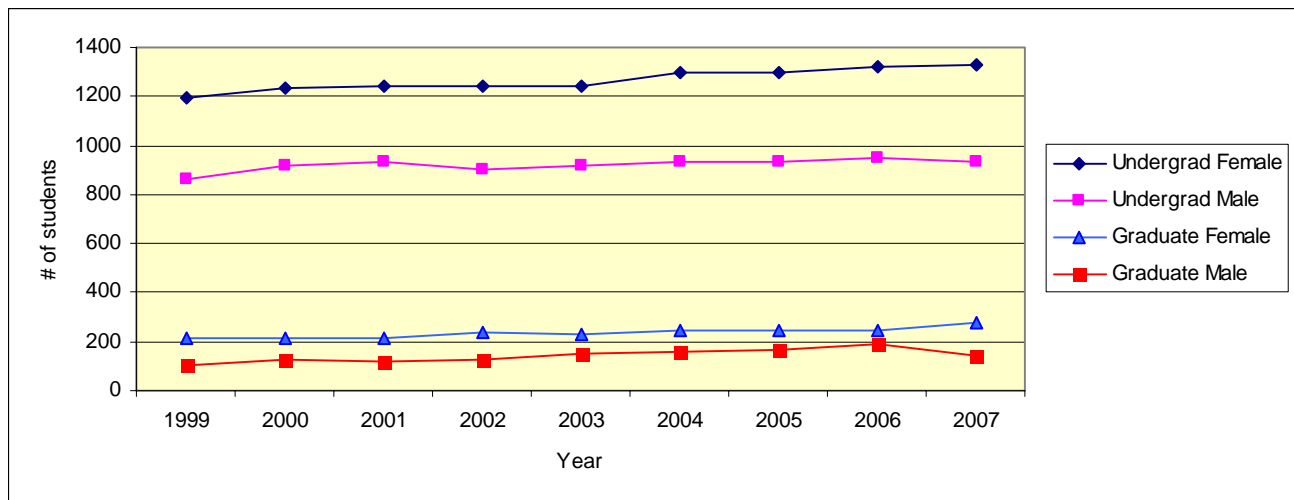
Undergraduates	Fall 2005		Fall 2006		Fall 2007	
	FT	PT	FT	PT	FT	PT
DeLand	2150	71	2163	79	2152	76
Celebration	<u>10</u>	<u>3</u>	<u>22</u>	<u>9</u>	<u>24</u>	<u>12</u>
Undergraduate Total	2160	74	2185	88	2176	88

Graduates	Fall 2003		Fall 2004		Fall 2005		Fall 2006		Fall 2007	
	FT	PT	FT	PT	FT	PT	FT	PT	FT	PT
DeLand Graduates	65	116	87	132	74	141	73	150	121	90
DeLand P-Bacc	<u>4</u>	<u>25</u>	<u>6</u>	<u>26</u>	<u>3</u>	<u>18</u>	<u>12</u>	<u>15</u>	<u>5</u>	<u>28</u>
DeLand Total	69	141	93	158	77	159	85	165	126	118
Celebration Graduates	28	78	36	65	67	36	71	63	81	34
Celebration P-Bacc	<u>0</u>	<u>2</u>	<u>0</u>	<u>0</u>	<u>0</u>	<u>3</u>	<u>2</u>	<u>2</u>	<u>1</u>	<u>3</u>
Celebration Total	28	80	36	65	72	64	73	65	82	37
MBA/JD	<u>0</u>	<u>65</u>	<u>0</u>	<u>50</u>	<u>0</u>	<u>43</u>	<u>2</u>	<u>42</u>	<u>1</u>	<u>62</u>
Graduate Total	<u>97</u>	<u>286</u>	<u>129</u>	<u>273</u>	<u>149</u>	<u>266</u>	<u>160</u>	<u>272</u>	<u>209</u>	<u>217</u>

Enrollment by Gender (Historical)

		1999	2000	2001	2002	2003	2004	2005	2006	2007
Undergraduate	Male	864	921	931	900	920	930	937	949	935
	Female	1198	1234	1243	1242	1241	1300	1297	1324	1329
	Total	2062	2155	2174	2142	2161	2230	2234	2273	2264

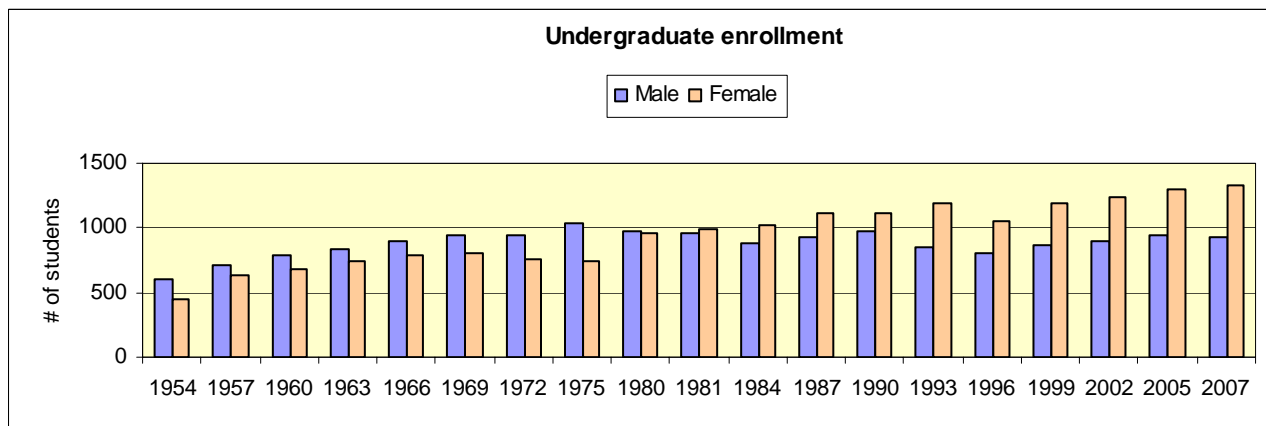
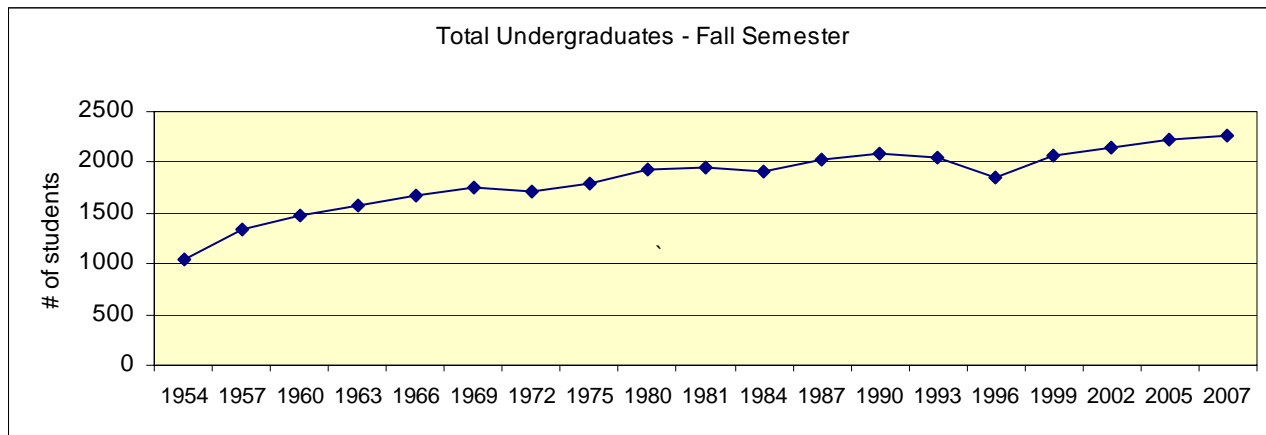
Graduate (excl Law)		1999	2000	2001	2002	2003	2004	2005	2006	2007
Male	101	124	118	125	151	159	168	188	146	
Female	217	212	213	241	232	243	247	244	280	
Total	318	336	331	366	383	402	415	432	426	



Headcount, Fall Semester (Historical - 1954 to 2007)

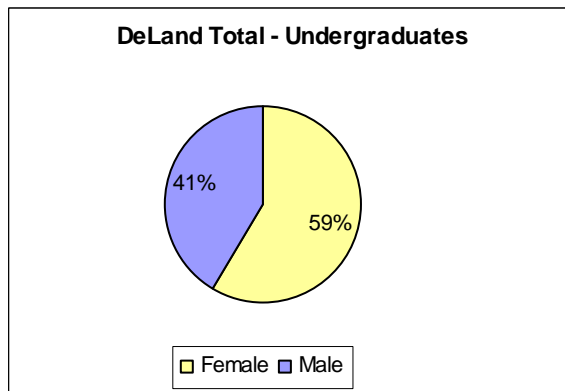
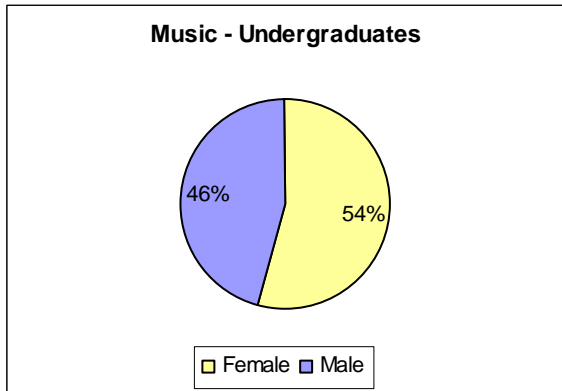
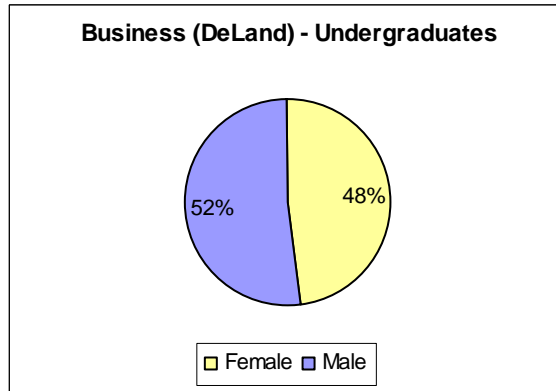
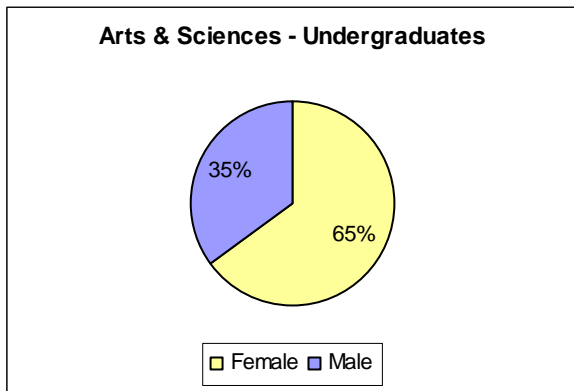
Undergraduate	Male		Female		TOTAL
	#	%	#	%	
Fall 1954	598	57%	444	43%	1042
Fall 1957	711	53%	634	47%	1345
Fall 1960	792	54%	676	46%	1468
Fall 1963	831	53%	737	47%	1568
Fall 1966	893	53%	782	47%	1675
Fall 1969	944	54%	806	46%	1750
Fall 1972	946	55%	763	45%	1709
Fall 1975	1035	58%	748	42%	1783
Fall 1980	972	50%	955	50%	1927
Fall 1981	954	49%	997	51%	1951
Fall 1984	882	46%	1021	54%	1903
Fall 1987	927	46%	1110	54%	2037
Fall 1990	973	47%	1118	53%	2091
Fall 1993	855	42%	1190	58%	2045
Fall 1996	804	43%	1047	57%	1851
Fall 1999	864	42%	1198	58%	2062
Fall 2002	900	42%	1242	58%	2142
Fall 2005	937	42%	1297	58%	2234
Fall 2007	935	41%	1329	59%	2264

Source: HEGIS and IPEDS Enrollment Reports



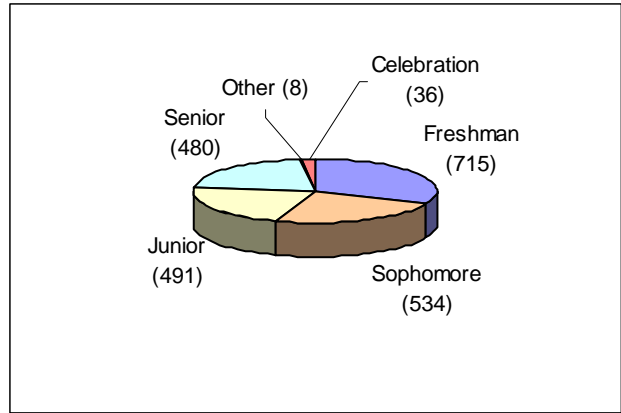
College or School & Gender (Fall 2007)

	Female	Male	Total
Arts & Sciences			
Undergraduate	862	465	1327
DeLand Graduate	119	17	136
Celebration Graduate	50	9	59
A & S Total	1031	491	1522
Business			
Undergraduate	323	354	677
Passport Undergrad	23	13	36
DeLand Graduate	56	52	108
Celebration Graduate	26	34	60
Law-MBA Graduate	29	34	63
Total	457	487	944
Music			
Undergraduate only	121	103	224
Law	546	485	1031
Stetson Total	2155	1566	3721



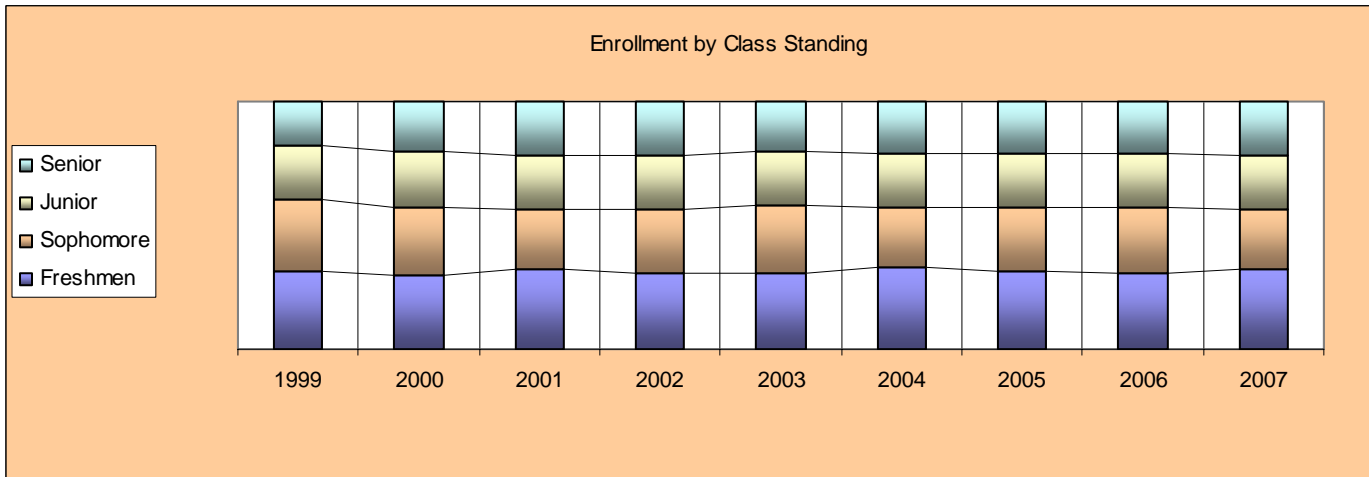
Class Standing* - Undergraduate (Fall 2007)

Headcount	Female	Male	Total
Freshmen	396	319	715
Sophomore	319	215	534
Junior	283	208	491
Senior	301	179	480
Other	7	1	8
Celebration	23	13	36
TOTAL	1329	935	2264



Class Standings - Undergraduate (Historical)

	1999	2000	2001	2002	2003	2004	2005	2006	2007
Freshmen	651	632	690	659	657	738	697	693	715
Sophomore	581	586	528	544	594	539	579	590	534
Junior	453	489	480	460	455	481	482	489	491
Senior	359	430	468	469	438	459	462	460	480
Other	18	18	8	10	17	13	14	10	8
Celebration								31	36



***Class Standing Definitions:**

- Freshmen 0 – 26 hours earned
- Sophomore 27 – 59 hours earned
- Junior 60 – 89 hours earned
- Senior 90+ hours earned

Ethnicity (Fall 2007)

	Undergraduate		Graduate & Post Bacc		Law	
	#	%	#	%	#	%
African American	105	4.6%	26	6.1%	69	6.7%
Native American	8	.4%	0		6	.6%
Asian	48	2.1%	7	1.6%	28	2.7%
Hispanic / Latino	199	8.8%	30	7.0%	95	9.2%
White (US Resid)	1687	74.5%	313	73.5%	768	74.5%
Intl / Res. Alien	76	3.4%	14	3.3%	20	1.9%
Other	49	2.2%	4	.9%	16	1.6%
Unknown	92	4.1%	32	7.5%	29	2.8%

Enrollment By Ethnicity - Undergraduate (Historical)

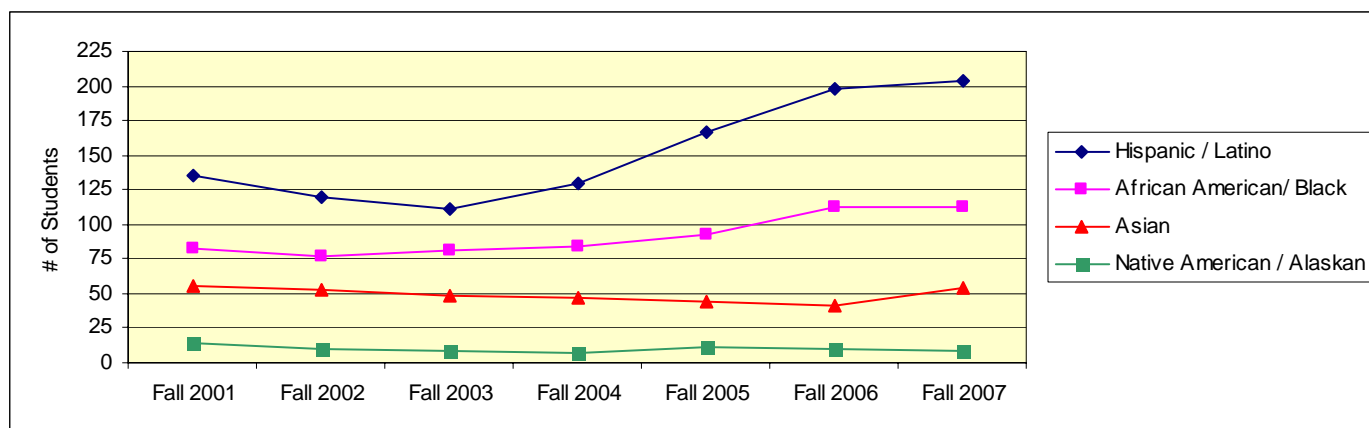
	Fall 2001	Fall 2002	Fall 2003	Fall 2004	Fall 2005	Fall 2006	Fall 2007
African American	80	73	77	80	89	109	105
Native American	14	10	9	7	11	10	8
Asian	45	47	45	39	39	38	48
Hispanic / Latino	123	109	104	124	158	193	199
White (US Resid)	1789	1766	1800	1802	1730	1716	1687
Intl / Non-Res. Alien	87	71	74	79	81	62	76
Other*	36	66	52	99	126	145	49
Unknown*							92
Total	2174	2142	2161	2230	2234	2273	2264

*Other and Unknown combined prior to Fall 2007

ALANA Enrollment - Undergraduate (Historical)

(Ethnicity of all students, including non-residents, who do not consider themselves White/Caucasian)

	Fall 2001	Fall 2002	Fall 2003	Fall 2004	Fall 2005	Fall 2006	Fall 2007
Hispanic / Latino	135	120	111	130	167	198	204
African American / Black	83	77	81	84	92	112	113
Asian	56	52	49	47	44	41	54
Native American / Alaskan	14	10	9	7	11	10	8

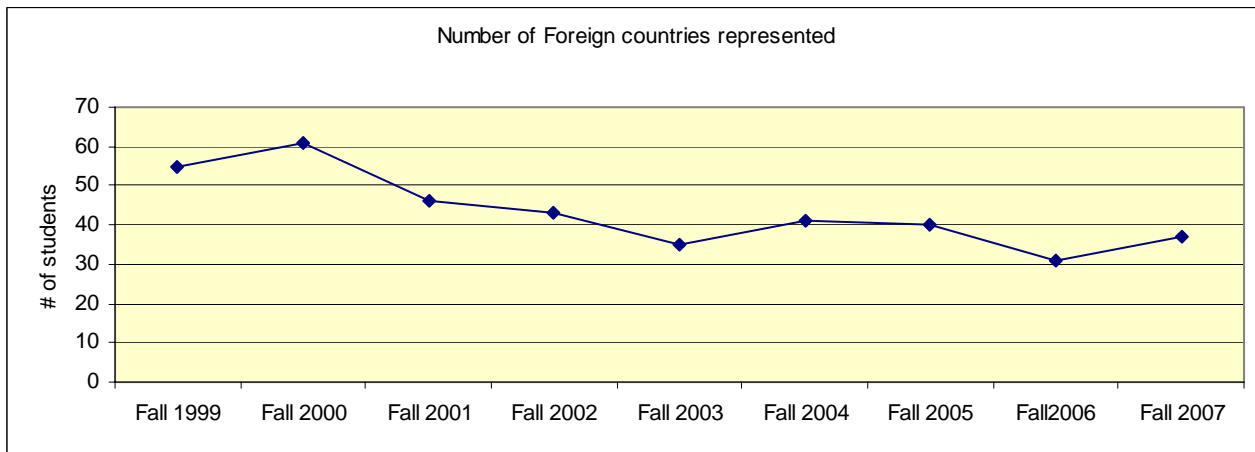


International / Non-Resident Students Home country - Undergraduate (Fall 2007)

United Kingdom	12	Argentina	1	Kyrgyz Republic	1
Jamaica	8	Bahrain	1	Lebanon	1
Canada	7	Belarus	1	Morocco	1
Bermuda	3	Bulgaria	1	Nigeria	1
China	3	Cayman Islands	1	Phillipines	1
Germany	3	Columbia	1	Poland	1
Venezuela	3	Croatia	1	Saudi Arabia	1
Australia	2	Dominican Republic	1	Slovenia	1
Egypt	2	France	1	Spain	1
Japan	2	Iceland	1	Sri Lanka	1
Netherlands Antilles	2	India	1	Tanzania	1
South Africa	2	Korea	1	Uruguay	1
				Vietnam	1

Number of Foreign Countries represented (Historical)

1999-00	2000-01	2001-02	2002-03	2003-04	2004-05	2005-06	2006-07	2007-08
55	61	46	43	35	41	40	31	37



Enrollment by Home State - Fall 2007 (Undergraduates)



Enrollment by Home State - Undergraduate (Historical)

	1999	2000	2001	2002	2003	2004	2005	2006	2007
Alabama	8	6	6	9	2			2	1
Alaska	1	1	1	1			1	1	1
Arizona		2	2	2	3	1	1	3	2
Arkansas	1	2	2	2	2	1		3	2
California	5	5	5	4	4	8	12	9	9
Colorado	3	2	1	4	6	12	11	11	8
Connecticut	26	27	24	33	24	29	31	37	40
Delaware					1	1	1	2	1
Florida	1530	1606	1657	1594	1665	1705	1672	1776	1757
Georgia	45	40	52	51	39	36	33	27	30
Hawaii									
Idaho			1	2					
Illinois	15	16	16	11	16	13	15	13	13
Indiana	7	7	6	9	3	3	5	6	4
Iowa	3	2		2			1	2	2
Kansas	3	3	5	6	3	1		1	
Kentucky	11	5	4	6	5	6	10	7	3
Louisiana	3	4	2	4	3	3	1	2	3
Maine	6	3	2	9	9	11	9	18	17
Maryland	12	9	14	18	17	21	23	17	19
Massachusetts	34	33	45	44	41	52	53	54	47
Michigan	6	2	2	3	2	4	5	6	7
Minnesota	3	4	4	4	3	7	8	4	5
Mississippi	2	3	3	2	3	1	1	3	4
Missouri	10	11	9	8	6	9	7	5	5
Montana									
Nebraska				1		3	1	1	
Nevada	2	1						1	1
New Hampshire	6	15	13	16	21	20	21	17	17
New Jersey	12	12	14	21	23	26	28	25	26
New Mexico	2	1	1	2	2	2	2	3	2
New York	45	41	47	47	30	36	41	32	36
North Carolina	9	12	10	11	6	7	11	11	11
North Dakota			1						
Ohio	13	11	14	14	11	10	12	9	16
Oklahoma	2	4	5	4	3	3	3		
Oregon	3	3	1	2	2	2	2	1	
Pennsylvania	23	28	22	31	22	21	26	21	20
Rhode Island	3	4	4	8	7	6	3	4	6
South Carolina	12	11	12	13	15	12	12	5	3
South Dakota	1	1	1	1			1	1	1
Tennessee	9	9	11	14	18	16	12	6	7
Texas	13	17	16	17	11	16	17	16	16
Utah	1		3	3	2	2	1	1	3
Vermont	2	4	3	2	6	5	3	3	2
Virginia	7	14	17	19	14	16	19	18	16
Washington	1	1	1	2	1	2	1	1	
West Virginia	1	1	2	1	2	2	2	3	6
Wisconsin	3	5	5	6	7	5	6	4	1
Wyoming						1			
Total	1904	1988	2066	2063	2060	2137	2124	2192	2170

Undergraduate Enrollment by Florida County (Historical)

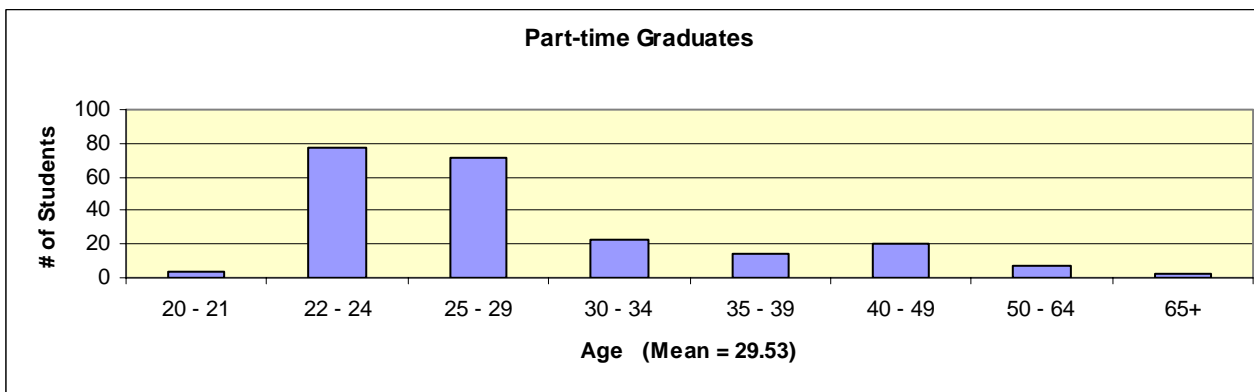
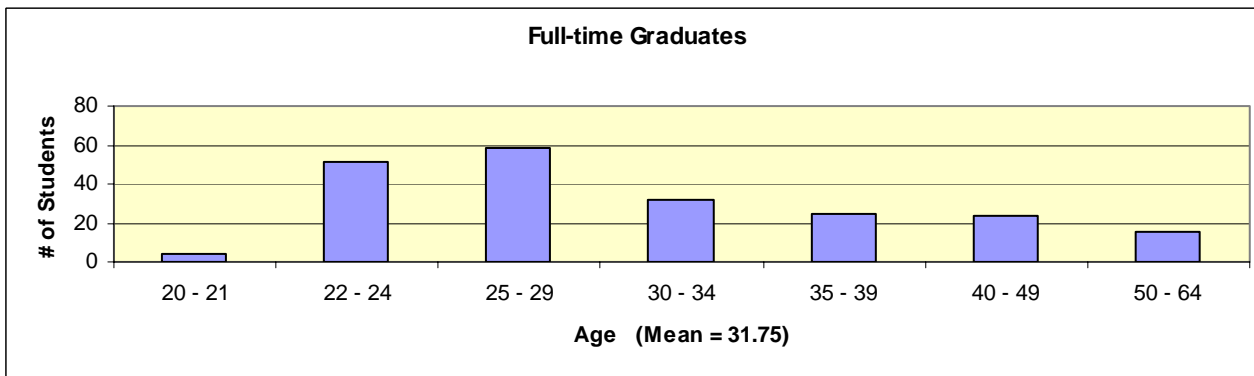
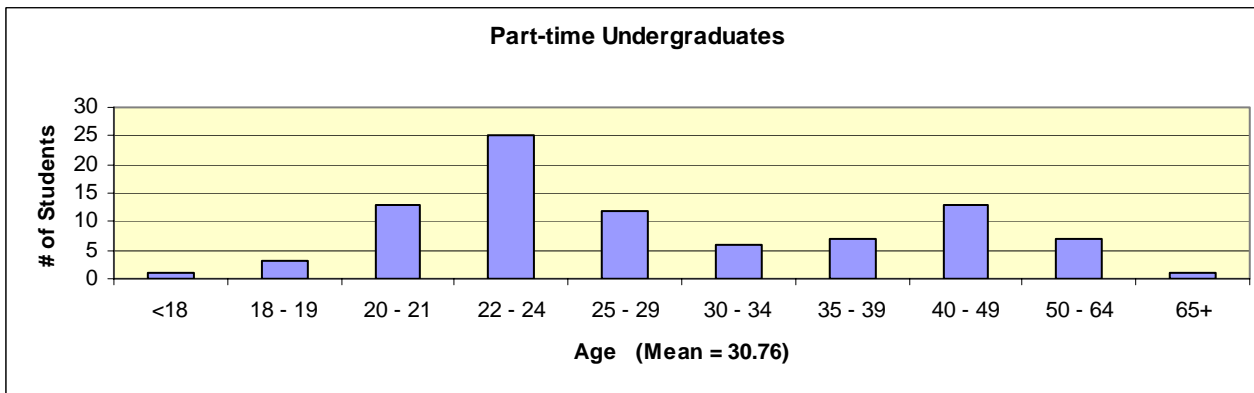
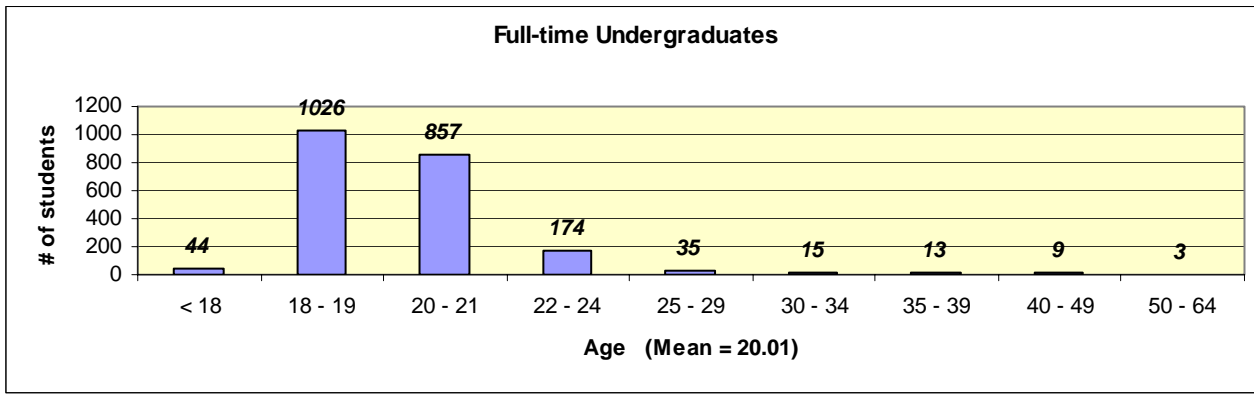
	2003	2004	2005	2006	2007
Alachua	15	12	17	15	10
Bay	9	8	7	11	10
Bradford	0	2	0	0	0
Brevard	82	92	91	91	76
Broward	60	58	58	62	62
Charlotte	10	8	15	13	13
Citrus	10	12	9	10	16
Clay	7	13	13	15	18
Collier	38	41	34	37	42
Columbia	1	1	2	1	0
Dade	33	38	50	39	37
Desoto	1	2	3	5	4
Dixie	1	1	1	0	0
Duval	65	63	56	51	53
Escambia	10	8	7	3	3
Flagler	19	22	23	30	33
Gadsden	1	1	0	0	0
Gilchrist	0	0	0	0	0
Gulf	1	0	0	1	1
Hardee	1	2	1	0	1
Hendry	1	2	1	1	1
Hernando	12	12	11	13	14
Highlands	5	5	6	6	4
Hillsborough	35	27	33	38	42
Indian River	23	23	21	28	31
Jackson	0	1	1	1	1
Jefferson	0	0	0	0	0
Lafayette	0	1	1	1	1
Lake	40	43	38	51	58

	2003	2004	2005	2006	2007
Lee	48	43	51	44	41
Leon	11	9	14	16	16
Madison	2	2	1	3	2
Manatee	17	25	25	29	28
Marion	33	34	23	17	21
Martin	20	22	32	37	39
Monroe	10	8	9	11	8
Nassau	4	6	3	4	4
Okaloosa	11	11	14	11	11
Okeechobee	1	3	3	2	4
Orange	128	136	151	144	152
Osceola	12	17	22	35	34
Palm Beach	101	100	103	91	105
Pasco	16	16	18	19	18
Pinellas	61	54	59	60	68
Polk	37	33	33	32	35
Putnam	3	2	4	7	5
Santa Rosa	7	9	4	4	2
Sarasota	31	34	33	38	33
Seminole	118	121	103	125	119
St. Johns	25	30	19	30	29
St. Lucie	24	23	23	25	23
Sumter	0	1	1	3	1
Suwannee	1	1	0	1	2
Taylor	0	0	0	0	0
Union	0		1	1	1
Volusia	426	443	405	464	419
Wakulla	1	1	1	0	
Walton	0	0	0	0	1

Enrollment by Religious Affiliation - Undergraduate (Fall 2007)

Anglican	8	Eastern Religions, Other	13	Presbyterian	75
Assembly of God	9	Episcopal	40	Protestant Christian	35
Baptist	128	Greek Orthodox	5	Reformed	2
Buddhism	3	Hindu	3	Seventh Day Adventist	7
Catholic	377	Islam (Muslim/Moslem)	5	Unitarian	2
Christian Science	3	Jewish	38	United Church of Christ	6
Church of Christ	8	Lutheran	49	Non Denominational Christian	124
Church of God	10	Methodist	115	No preference	221
Church of the Brethren	2	Mormon Latter Day Saints	6	Unknown	889
Church of the Nazarene	2	Others	45	TOTAL	2264
Disciples of Christ	18	Pentacostal Holiness	16		

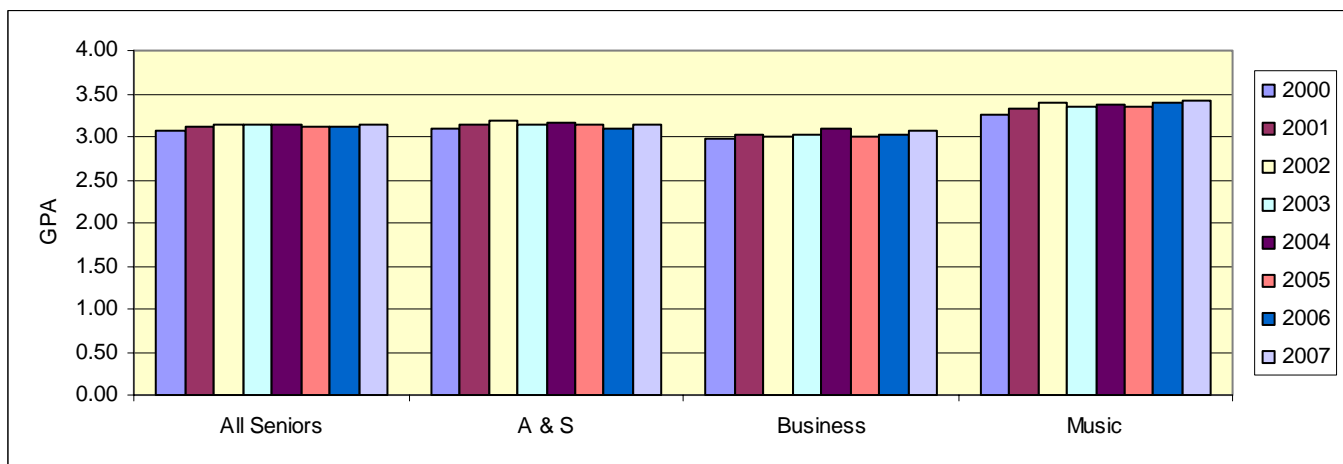
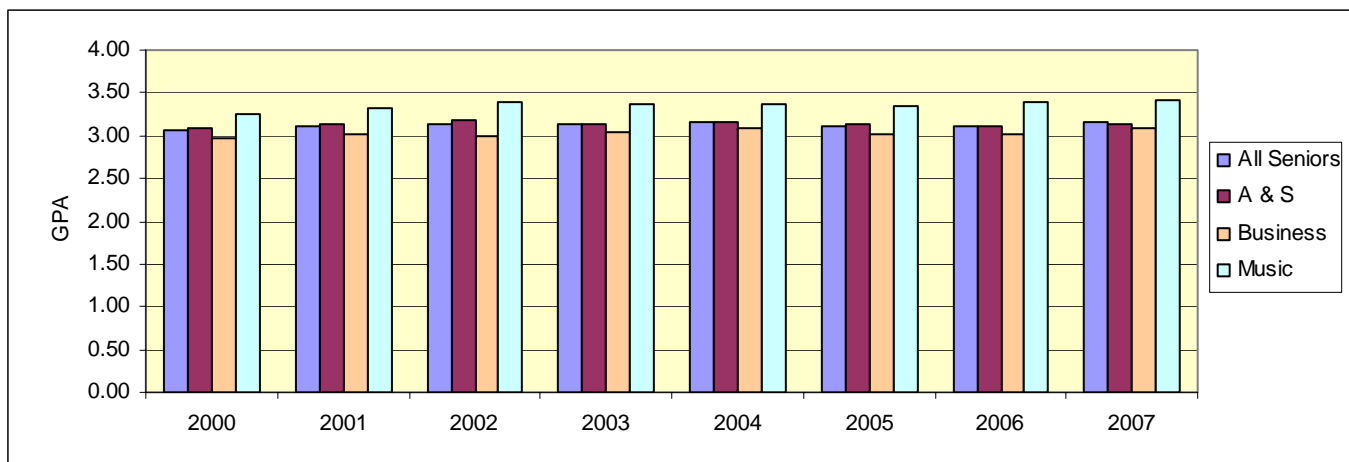
Age Distribution (Fall 2007)



Average Senior cumulative GPA's (Historical)

(Spring Semester)	2000	2001	2002	2003	2004	2005	2006	2007
All Seniors	3.07	3.11	3.14	3.13	3.15	3.12	3.11	3.15
Arts & Sciences	3.09	3.13	3.18	3.13	3.16	3.14	3.10	3.13
Business	2.98	3.02	2.99	3.03	3.09	3.01	3.02	3.08
Music	3.26	3.33	3.39	3.36	3.37	3.35	3.40	3.42

Spring 2007	All seniors	A & S	Business	Music
95th Percentile (Top 5%)	3.93	3.94	3.90	3.94
90th Percentile (Top 10%)	3.84	3.85	3.77	3.89
80th Percentile (Top 1/5)	3.66	3.65	3.60	3.80
75th Percentile (Top 1/4)	3.58	3.57	3.50	3.78
67th Percentile (Top 1/3)	3.45	3.44	3.34	3.65
60th Percentile (Top 40%)	3.34	3.33	3.22	3.57
50th Percentile (Top 1/2, median)	3.17	3.15	3.07	3.44
40th Percentile	3.02	2.98	2.90	3.37
25th Percentile	2.78	2.75	2.69	3.15



Class Statistics

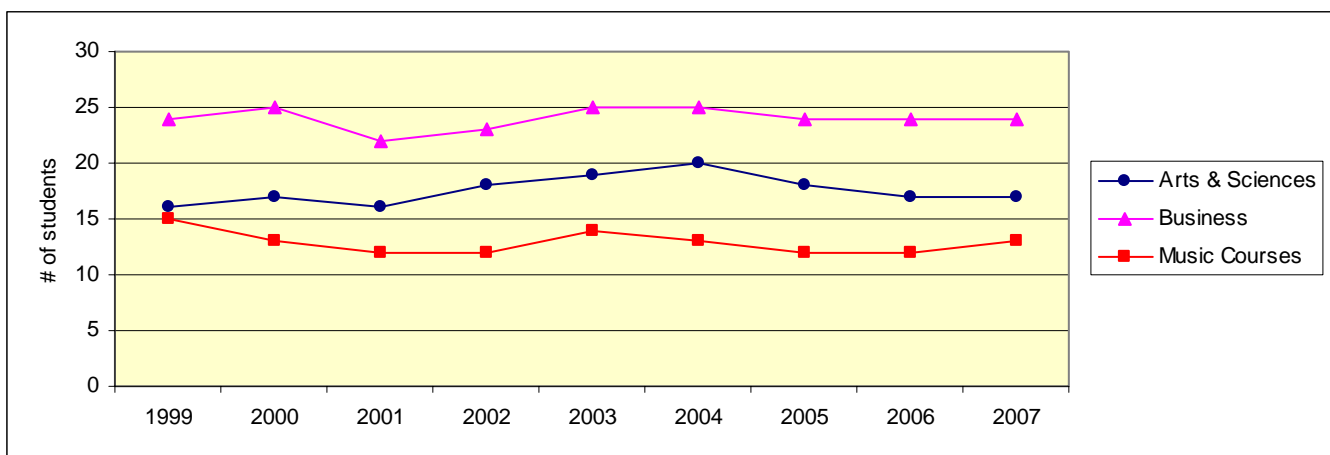
Average Class Size - Undergraduate (Fall 2007)

	Lower Level	Upper Level	Combined
Arts & Sciences	21	12	17
Education	22	11	14
Humanities	19	12	16
Natural Sciences	25	11	20
Social Sciences	23	15	19
Business	26	23	24
Music Courses	15	9	13
Music Ensembles	20	13	17
Applied Music	3	2	3

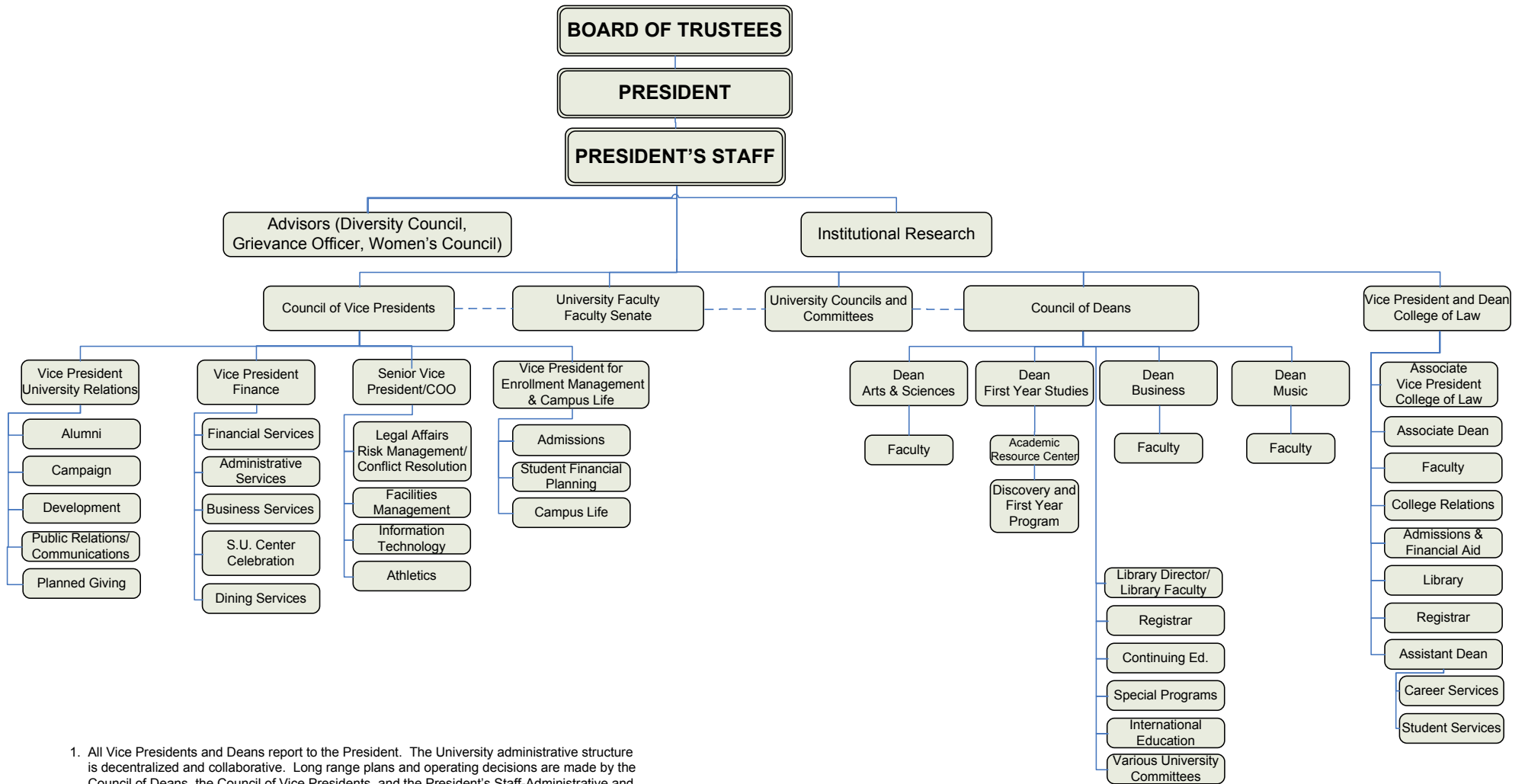
Independent Study is excluded from the above. The number of Independent Study sections across all schools = 80.

Average Class Size - Undergraduate (Historical)

	1999	2000	2001	2002	2003	2004	2005	2006	2007
Arts & Sciences	16	17	16	18	19	20	18	17	17
Education	12	14	13	12	15	13	12	12	14
Humanities	15	17	15	16	17	17	17	16	16
Natural Sciences	18	18	17	18	20	22	19	20	20
Social Sciences	17	21	19	22	22	24	23	21	19
Business	24	25	22	23	25	25	24	24	24
Music Courses	15	13	12	12	14	13	12	12	13
Music Ensembles	15	17	18	16	17	17	17	17	17
Applied Music	2	3	2	2	2	2	3	3	3

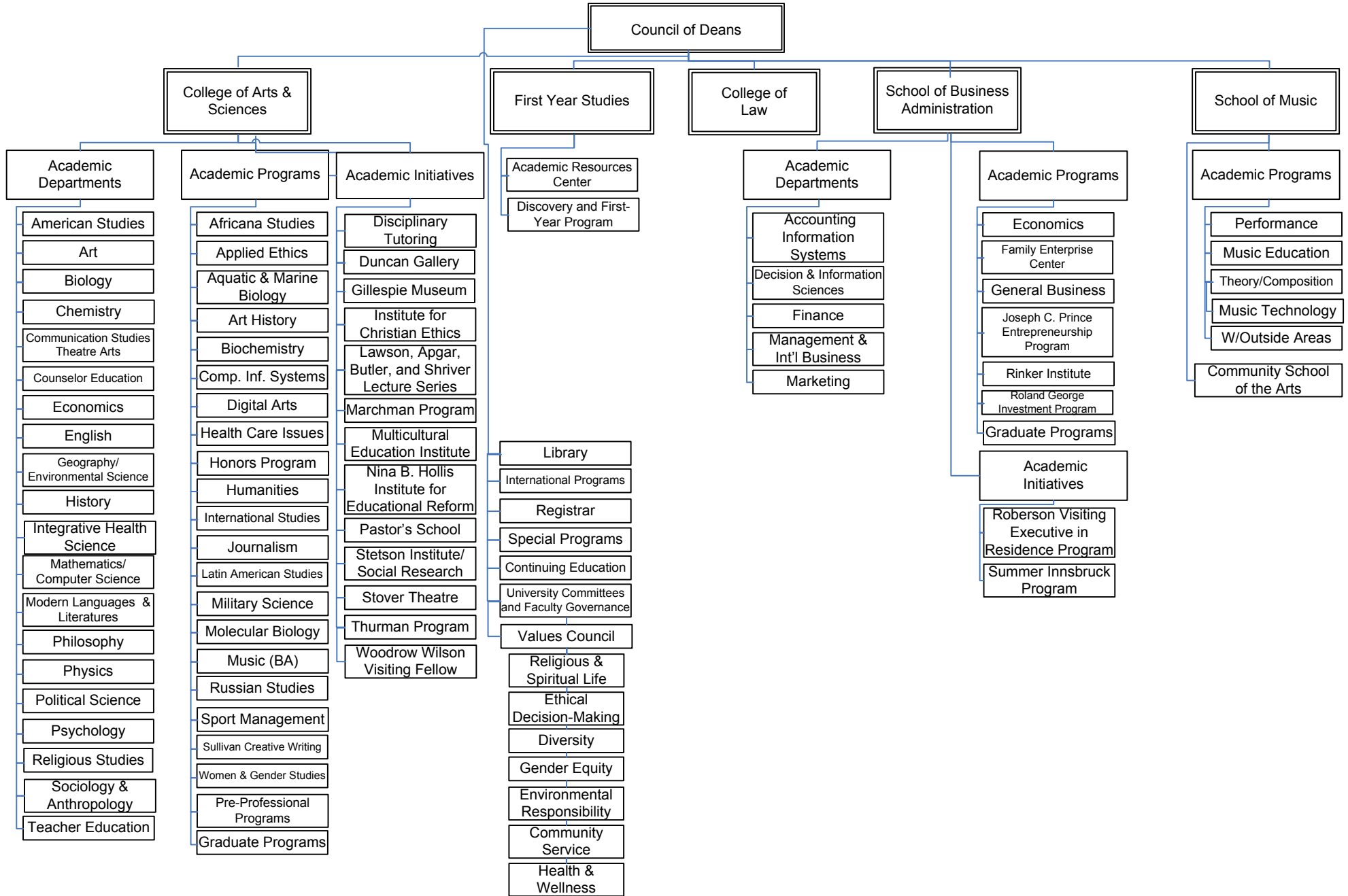


STETSON UNIVERSITY ORGANIZATIONAL CHART 2007-08



1. All Vice Presidents and Deans report to the President. The University administrative structure is decentralized and collaborative. Long range plans and operating decisions are made by the Council of Deans, the Council of Vice Presidents, and the President's Staff-Administrative and President's Staff-Long Range Planning Committee.
2. The Senior Vice President and Chief Operating Officer represents the President in his absence and consults directly with all Vice Presidents and Deans as needed.
3. While the College of Law is an integral part of the University, its geographic location and status as a graduate professional school pragmatically make it a more autonomous unit within the University administrative structure.
4. The Director of Athletics makes regular reports to the President and President's Staff.

ACADEMIC ORGANIZATIONAL CHART 2007-08



Faculty

Full-time Faculty - by Rank, Gender, Ethnicity (DeLand)

	NR/Alien		Black, non-Hispanic		Asian / Pacific Islander		Hispanic		White, non-Hispanic		Other	Total
	Men	Women	Men	Women	Men	Women	Men	Women	Men	Women	M / W	

As of 11/1/99

Professors			1				1		42	10		54
Associate professors			1	1		1		2	39	20		64
Assistant professors			1	3	1	1	1		13	20		40
Instructors/Lecturers								3	4	9		16
Other faculty			1						3	4		8
TOTAL			4	4	1	2	2	5	101	63		182

As of 11/1/01

Professors			1						47	12		60
Associate professors			1	3		2		2	35	18		61
Assistant professors		1	3	1	1		3		12	23		44
Instructors/Lecturers							1	3	7	12		23
Other faculty					1				5	2		8
TOTAL		1	5	4	2	2	4	5	106	67		196

As of 11/1/03

Professors			1						51	14		66
Associate professors			1	4		2	1	2	30	21		61
Assistant professors			2	1	2		1		18	19	1 / 0	44
Instructors/Lecturers								3	6	6		15
Other faculty	1				1				5	1		8
TOTAL	1		4	5	3	2	2	5	110	61	1 / 0	194

As of 11/1/05

Professors			1		1	1		1	51	15		71
Associate professors				4		1	1	1	27	24		58
Assistant professors	2	1	1	1			1		21	16	1 / 0	44
Instructors/Lecturers		1						2	5	11		19
TOTAL	2	2	2	5	1	2	2	4	104	66	1 / 0	191

As of 11/1/07

Professors			1			1		1	50	16		69
Associate professors	2			3		1	2		27	29		64
Assistant professors	2	1	1	1					13	6	1 / 0	25
Instructors/Lecturers		1					1	2	6	9		19
Other faculty					1				2	4	0 / 1	8
TOTAL	4	2	2	4	1	2	3	3	98	64	1 / 1	185

Source: IPEDS Fall Staff Survey

Percent of Full-Time teaching Faculty with Terminal Degrees, DeLand - Historical

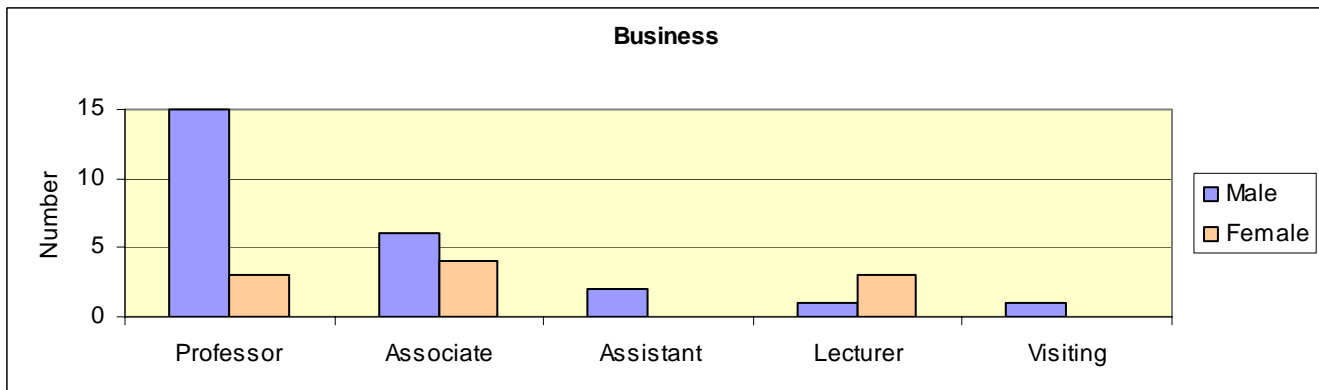
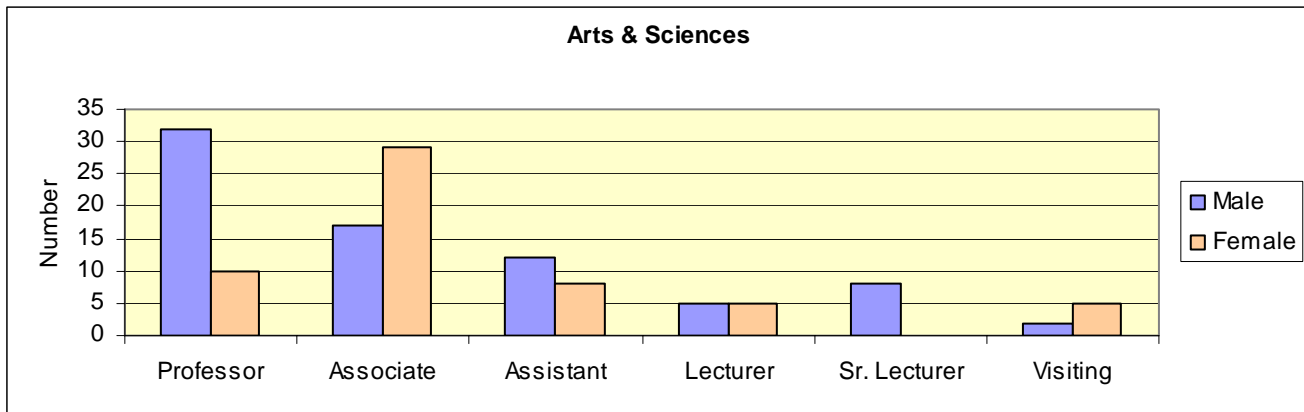
(includes Sabbaticals/Leaves)

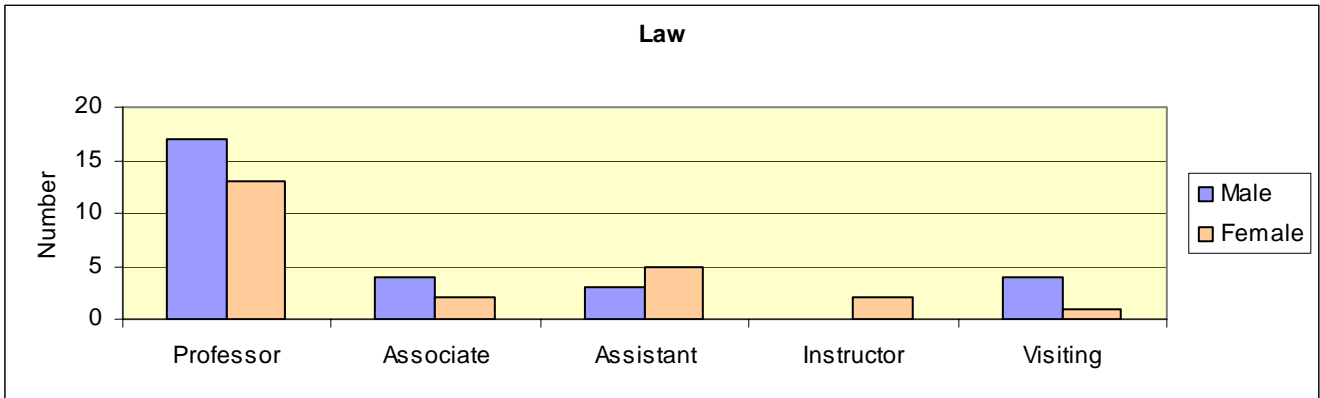
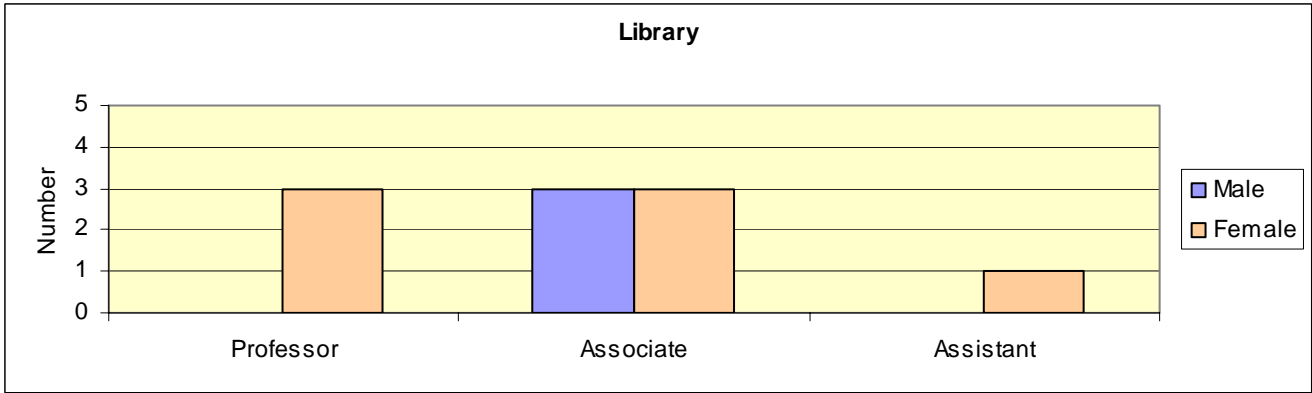
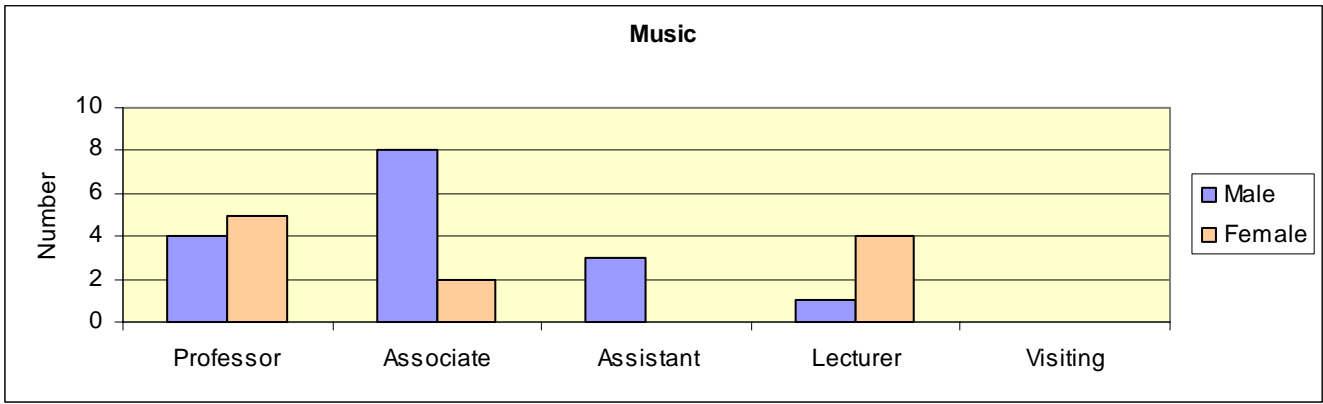
	2000	2001	2002	2003	2004	2005	2006	2007
Professors	100%	100%	100%	100%	100%	100%	100%	100%
Associate Professors	98%	98%	97%	97%	96%	97%	94%	94%
Assistant Professors	83%	84%	84%	82%	81%	83%	93%	92%
Instructors/Lecturers/Visiting	51%	54%	45%	52%	48%	60%	62%	63%
Senior Lecturer			100%	100%	100%	100%	100%	100%
TOTAL	87%	88%	88%	90%	89%	90%	92%	92%

Full-time Faculty By School and Gender (Fall 2007)

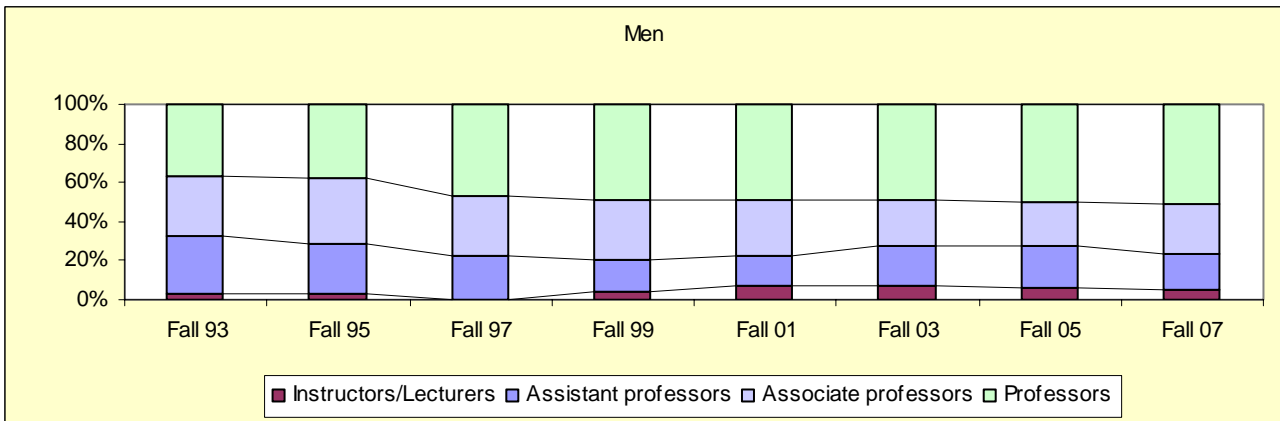
(includes Sabbaticals/Leaves)

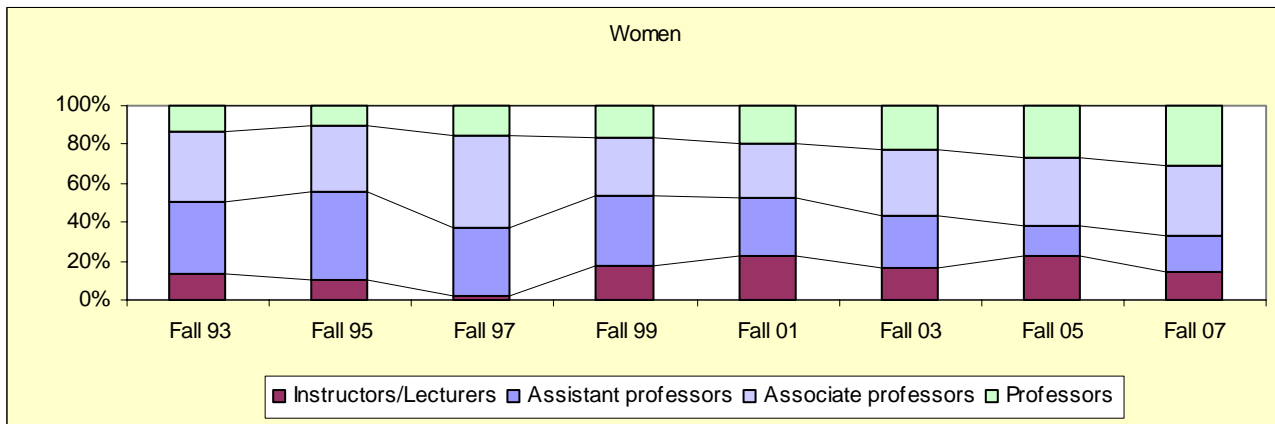
	Arts & Science		Business		Music		Library		Law	
	Male	Female	Male	Female	Male	Female	Male	Female	Male	Female
Professor	32	10	15	3	4	5	0	3	17	13
Associate	17	29	6	4	8	2	3	3	4	2
Assistant	12	8	2	0	3	0	0	1	3	5
Instructor									0	2
Lecturer	5	5	1	3	1	4				
Sr. Lecturer	8	0								
Visiting	2	5	1						4	1
TOTAL	76	57	25	10	16	11	3	7	28	23





Full-Time Instructional Faculty by Gender - Historical





Source: IPEDS Faculty Salary Survey

Student-Faculty Ratio

The table below shows the ratio of full-time equivalent undergraduate students to full-time equivalent instructional faculty for the fall semester.

	Fall 2000	Fall 2001	Fall 2002	Fall 2003	Fall 2004	Fall 2005	Fall 2006	Fall 2007
Student-faculty ratio	10.4 to 1	10.3 to 1	10.7 to 1	11.1 to 1	11.7 to 1	11.7 to 1	11.3 to 1	11.1 to 1
Student FTE*	2107.1	2120.4	2101.3	2118.3	2197.6	2200.2	2235.9	2224.6
Faculty FTE**	202.6	205.1	196.4	191.7	187.4	188.7	197.7	200.0

*Full-time undergraduates + Part-time undergraduate credit hours / 12

**Full-time faculty excluding sabbatical/leaves and faculty in stand alone grad programs (CSL) + 1/3 Part-time faculty

Staff

(Including DeLand, Celebration and Law School)

	Fall 2004		Fall 2005		Fall 2006	
	Full-time	Part-time	Full-time	Part-time	Full-time	Part-time
Instruction	231	113	243	112	237	103
Executive	114	1	118	0	113	0
Other Professional	134	14	139	10	152	12
Technical, paraprofessional	5	1	6	1	6	1
Clerical and secretarial	139	16	141	18	139	19
Skilled crafts	5	0	4	0	4	0
Service/Maintenance	111	16	107	7	112	6
TOTAL	739	161	758	148	763	141
	900		906		904	

Source: IPEDS: EAP - Employees by Assigned position report or Staff Survey