

TABLE OF CONTENTS

INTRODUCTION	3
GENERAL INFORMATION	5
Statement of Institutional Purpose	5
I. Educational Mission	5
II. Values and Vision	5
III. Heritage and Character	6
Accreditation.....	7
Historical Timeline	7
KEY INDICATORS.....	13
Student Retention Analysis.....	13
Graduation Rates.....	14
Senior Survey Statistics - Postgraduate Plans.....	15
Primary Activity After Graduation	15
Degree Desired	15
Subject Area of Planned Degree	16
Long Term Career Plans	16
Tuition and Fees	17
Stetson - Historical	17
2006 - 07 Peer Schools Comparison - Tuition and Fees	18
Financial Information	18
Endowment - Market Value.....	18
Endowment - Reference Schools	19
Annual Budget	19
Alumni Giving Profile	20
Student Financial Aid	20
Scholarships/Grants (2006-2007)	20
Total Aid and Self-Help* (2006-2007).....	20
ACADEMIC PROGRAMS.....	21
Degrees and Programs Offered (2006-07).....	21
College of Arts and Sciences	21
School of Business Administration	21
School of Music	22
Graduate.....	22
Enrollment by Major - Undergraduate (Fall 2006).....	23
Enrollment by Minor - Undergraduate (Fall 2006)	24
Enrollment by Major - Graduate (Fall 2006).....	24
Enrollment by Major - Undergraduate (Historical)	25
Degrees Awarded by Major - Undergraduate (Historical)	27
Degrees Awarded - by Degree Type (Historical)	28
College of Law.....	29
STUDENT INFORMATION	31
SAT / ACT Scores	31
Range of SAT / ACT Scores.....	31
First-time Freshmen & Transfers.....	32

Enrollment	34
Headcount, Fall Semester (Historical).....	34
Enrollment by Campus	35
Enrollment by Gender (Historical)	35
Headcount, Fall Semester (Historical - 1954 to 2005)	36
College or School & Gender (Fall 2006).....	37
Class Standing* - Undergraduate (Fall 2006)	38
Class Standings - Undergraduate (Historical)	38
Ethnicity (Fall 2006).....	39
Enrollment By Ethnicity - Undergraduate (Historical)	39
ALANA Enrollment - Undergraduate (Historical).....	39
International / Non-Resident Students Home country - Undergraduate (Fall 2006).....	40
Number of Foreign Countries represented (Historical).....	40
Enrollment by Home State - Undergraduate (Fall 2006).....	41
Enrollment by Home State - Undergraduate (Historical)	42
Undergraduate Enrollment by Florida County (Historical).....	43
Enrollment by Religious Affiliation - Undergraduate (Fall 2006)	43
Age Distribution (Fall 2006)	44
Average Senior cumulative GPA's (Historical)	45
Class Statistics	46
Average Class Size - Undergraduate (Fall 2006)	46
Average Class Size - Undergraduate (Historical).....	46
 STUDENT LIFE	 47
Athletics.....	47
Intercollegiate Athletics.....	47
Intramural Program.....	47
Organizations and Clubs.....	47
Social Organizations	47
Honorary and Academic Organizations.....	48
Religious Organizations.....	48
Service Organizations.....	48
Campus Life Organizations	48
Special Interest Organizations	49
 ADMINISTRATION, FACULTY AND STAFF	 51
2006-07 Organizational Chart	51
Faculty	52
Full-time Faculty - by Rank, Gender, Ethnicity	52
Percent of Full-Time teaching Faculty with Terminal Degrees - Historical	53
Full-time Faculty By School and Gender (Fall 2006)	53
Full-Time Instructional Faculty by Gender - Historical	54
Student-Faculty Ratio	55
Staff.....	55
Presidents of Stetson University	56
Board of Trustees (2006-2007).....	56
Academic and Administrative Officers	57

INTRODUCTION

Dear Stetson Community:

Much of the planning and evaluation necessary to improve the effectiveness of the University begins with an understanding of basic institutional facts. The *Stetson University Fact Book* is prepared annually by the Institutional Research Office to provide a better understanding of a variety of issues at Stetson. By sharing and discussing this information, members of the Stetson community are able to more effectively contribute to the planning processes of the University. As you use this information, please let us know how future editions can be improved.

Dr. John M. Tichenor
Director of Institutional Research

GENERAL INFORMATION

Statement of Institutional Purpose Approved by the Board of Trustees, February 4, 2000

I. Educational Mission

Our mission at Stetson University is to provide an excellent education in a creative community where learning and values meet, and to foster in students the qualities of mind and heart that will prepare them to reach their full potential as informed citizens of local communities and the world.

At Stetson, the art of teaching is practiced through programs solidly grounded in a tradition of liberal learning that stimulates critical thinking, imaginative inquiry, creative expression, and lively intellectual debate. The art of learning is enhanced through small interactive classes, close student-faculty alliances, and collaborative approaches that provide the foundation for rewarding careers and advanced study in selective graduate and professional programs. We embrace diverse methodologies to foster effective communication, information and technological literacy, and aesthetic appreciation. We encourage the development of informed convictions, independent judgment, and lifelong commitments to learning that are characteristic features of the enlightened citizen. In bringing together learning and values, the University encourages all of its members to demonstrate personal integrity; to develop an appreciation for the spiritual dimension of life; to embrace leadership in an increasingly complex, interdependent, and technological world; and to commit to active forms of social responsibility.

II. Values and Vision

From its founding, Stetson University has affirmed the importance of spiritual life and the quest for truth in its educational mission. The University motto, *Pro Deo et Veritate* (“For God and Truth”), is a symbol of this commitment, and it expresses our determination to integrate the pursuit of a liberal education with the search for meaning in our lives and in our communities.

Chartered as an independent and comprehensive university, Stetson has had an historical relationship with the Christian community and the Baptist denominations. That relationship has shaped our commitment to build an inclusive community. Today, the University includes persons from diverse religious, ethnic, cultural, economic, and intellectual backgrounds. It is thus from varying perspectives that members of the University community have joined together to affirm collectively

- the centrality of knowledge, examined ideas, and independent judgment in the life of an educated person;
- the inherent dignity, worth, and equality of all persons;
- the importance of community in human life;
- the role of religious and spiritual quests for meaning in human experience;
- the value of diverse persons and differing ideas in an educational community;
- the responsibility we share to work toward social justice;
- the necessity for decisions to be guided by ethics and social responsibility; and
- the obligation of individuals and communities to act as responsible stewards of the natural environment.

In our curriculum and co-curricular activities, then, we aim to infuse traditional liberal education with the values of religious and spiritual life, ethical decision-making, human diversity and commonality, gender equity, community service, and environmental responsibility. We aspire to develop distinctive, innovative, and interdisciplinary undergraduate and graduate programs that are centered on vigorous intellectual inquiry, informed by these values, increasingly global in perspective, and worthy of local and national recognition.

III. Heritage and Character

Florida's first private university, Stetson University was founded in 1883 by Henry A. DeLand, a New York philanthropist, as DeLand Academy. In 1887, the Legislature of the State of Florida enacted the Charter of DeLand University as an independent institution of higher learning. The university's name was changed in 1889 to honor John B. Stetson, the nationally-known hat manufacturer who gave generously of his time and means to advance the quality and reputation of the institution, and who served, with Mr. DeLand and others, as a founding trustee of the University. The first charter stated that the objective of the University should be "to promote the general interests of education, and to qualify its students to engage in the learned professions or other employments of society, and to discharge honorably and usefully the various duties of life." Stetson's first president, Dr. John F. Forbes, clearly described the commitment to teaching that has been a hallmark of the University throughout its history:

Buildings, libraries and apparatus are good and give added power, but the vital contact of students with a vigorous and stimulating mind and heart--this is the sine qua non of a successful education...The most important thing is to find men and women of large heart and mind, apt to teach and full of enthusiasm and stimulating power...to develop in the student the habit of independent judgment--of investigating statements and principles for oneself, and thus for oneself discover their truth or falsity.

Today, Stetson University is a non-sectarian, comprehensive, private university composed of individually strong undergraduate programs in various colleges and schools, and a selected group of academically distinctive graduate, professional, and continuing education programs. We seek academically talented individuals with leadership potential and records of personal growth and community service. We promote and support scholarly and creative activity among students, faculty, and staff as a means to enhance learning, teaching, and professional development, and as a contribution to the broader base of knowledge.

Accreditation

- ◆ Accredited by the Commission on Colleges of the Southern Association of Colleges and Schools (1866 Southern Lane, Decatur, Georgia 30033-4097, Telephone (404) 679-4501) to award the Bachelor's, Master's and Specialist in Education degrees in the College of Arts and Sciences; Bachelor's degrees in the School of Music; Bachelor's and Master's degrees in the School of Business Administration; and the Juris Doctor and the Master of Laws degree in the College of Law.
- ◆ AACSB International – The Association to Advance Collegiate Schools of Business
- ◆ American Bar Association
- ◆ American Chemical Society
- ◆ Council for Accreditation of Counseling and Related Educational Programs
- ◆ National Association of Schools of Music
- ◆ National Council for Accreditation of Teacher Education

Historical Timeline

- 1883 Henry A. DeLand founds the DeLand Academy, November 5, originally housed in the First Baptist Church.
- 1884 DeLand Hall is completed, the first building in Florida to be continuously used for higher education.
- 1885 The institution becomes DeLand College, and John Franklin Forbes is named the first president. An affiliation with the Florida Baptist Convention is achieved.
- 1886 Stetson Hall (oldest residence hall in Florida) is occupied.
- 1887 The Florida legislature grants the charter to DeLand University defining a self-perpetuating Board of Trustees to be three-fourths Baptists with the president also to be a Baptist.
- 1889 The name is changed to John B. Stetson University, and Mr. Stetson becomes chairman of the Board of Trustees.
- 1892 Elizabeth Hall is built by Mr. Stetson--the north and south wings are completed in 1897.
- 1898 The *Florida Times Union* calls Presentation Day, February 10, "the most memorable day in...higher education" in Florida. President William R. Harper of the University of Chicago addresses the gathering leading to an affiliation (May 17) with Chicago until 1908. The University receives the wings of Elizabeth Hall, the Monroe Health Museum, and \$100,000 endowment Forbes has collected. This latter makes the University no longer dependent upon the largess of any one person.
- 1900 College of Law is founded as first law school in Florida.
- 1902 Flagler Hall becomes home of Law and Technology.
- 1904 The colorful Lincoln Hulley becomes president.
- 1907 Efforts by Baptists to change charter fail; Florida Baptist Convention founds Columbia College.
- 1908 Sampson Hall is constructed as the University's library.

- 1919 With the closing of Columbia College, a new agreement, the "Hulley-Rogers Agreement," is made with the Florida Baptist Convention giving it a voice in choosing trustees.
- 1932 Stetson joins Southern Association of Colleges and Schools. Hulley resists this action believing Stetson does not need this endorsement.
- 1934 President Hulley dies, January 20. Charles S. Farriss is named acting president. In August, William Sims Allen becomes the third president of Stetson.
- 1938 Most remembered football game, Stetson beats Florida, 16-14.
- 1943 Low point of enrollment during World War II, 362. With war's end, enrollment booms to 2,554 in 1947.
- 1947 President Allen's poor health causes him to resign in September; Dean Harry Garwood is named acting president.
- 1948 J. Ollie Edmunds assumes presidency, January 1, welcomed by William Hugh McEniry, Acting Dean, and Fred (Bud) Dickinson, President of Student Association.
- 1954 The beautiful Commons Building burns at Christmas. Carlton Union Building succeeds it (1957). College of Law moves to St. Petersburg.
- 1960 Stetson becomes first white college in Florida to admit a black student, Cornelius Hunter.
- 1963 Ford Foundation challenge grant of \$1,500,000 is largest single grant to that date. Matching funds are secured.
- 1964 The duPont-Ball Library is dedicated.
- 1967 President Edmunds resigns and Paul F. Geren becomes president.
- 1969 President Geren resigns; the day before his resignation is to take effect, he is killed in an automobile accident.
- 1970 Vice President John Johns, after serving as acting president, following President Geren's death, becomes the sixth president.
- 1974 Edmunds Center is built as a field house and multi-purpose assembly hall.
- 1976 President Johns goes to Furman University as president, and George Borders becomes acting chief administrator.
- 1977 Pope A. Duncan becomes Stetson's seventh president.
- 1978 A program of renovation of older buildings is inaugurated. Acquisition of Gillespie Museum property begins a series of real estate purchases to redefine the south boundary of the campus. Position of provost is established.
- 1979 Ten-year \$50 million campaign begins. The university's first \$1 million gift is committed by Kenneth Kirchman, trustee alumnus. The campaign is successfully concluded in five years, 1984.
- 1982- 83 Centennial of the University is celebrated with year-long activities. Gilbert Lycan's *Stetson University: The First 100 Years* is published. Phi Beta Kappa, Gamma of Florida, is installed as first chapter in a private university in Florida. Roland George Investments Program is begun. In 1989 the Roland and Sarah George Institute for Applied Investments is funded by a bequest in the will of Sarah George.

- 1984 Chancellor J. Ollie Edmunds dies. Master of Accountancy added. College of Liberal Arts becomes College of Arts & Sciences. School of Music adds Bachelor's degree in Musical Theatre.
- 1985 Stetson joins Trans America Athletic Conference and is a founding member of the women's New South Conference. The John T. Rosa bequest funds purchase of apartments at the College of Law. New Community School of the Arts is inaugurated.
- 1986 A master campus plan is developed.
- 1987 H. Douglas Lee, Executive Vice President, succeeds President Duncan as president and Duncan becomes Chancellor. The sorority houses are dedicated. A \$200 million fund campaign is approved. Hollis Leadership Development Program is funded. Major renovations begin at the College of Law.
- 1989 Griffith Hall, which houses admissions and financial aid, is completed. A master campus landscaping plan which begins the reforestation of Woodland Boulevard is approved.
- 1990 Law School team wins A.B.A. National Mock Trial Competition for second year in a row. The Lynn Center is purchased with a gift of \$3 million from E. M. Lynn, an alumnus. For the sixth year *U.S. News and World Report* ranks Stetson among the best comprehensive universities in the South. A new agreement is made with the Florida Baptist Convention reducing its role in Trustee nominations and reducing its financial support but continuing an affiliation.
- 1991 South African Archbishop Desmond Tutu, winner of the 1984 Nobel Peace prize, speaks out on global conflicts as the inaugural speaker of the James A. Stewart Lecture Series presented by Stetson's Institute for Christian Ethics. William M. and Nina B. Hollis Foundation Inc., makes a gift of \$4.5 million, \$4 million of which establishes a scholarship fund.
- 1992-93 In collaboration with Disney Development Company and the Osceola County School Board, Stetson plans a model school and teaching academy at Celebration. Former President Jimmy Carter gives the Stewart Lecture.
- 1993-94 The \$200 Million Campaign passes the \$106 million mark. A revised charter and by-laws reaffirm Stetson's identity as an independent institution. Baptist funding drops to \$17,000.
- 1994-95 Trustee Mark Hollis and his wife, Lynn, provide \$2.5 million toward the construction of a student activities center. The first School of Music Gala fills the 2,500-plus-seat Peabody Auditorium in Daytona Beach.
- 1995-96 In a message titled "On the Threshold of the 21st Century," Holocaust survivor, Nobel Peace Prize laureate and author Elie Wiesel presents the James A. Stewart Lecture. The College of Law is ranked first in the nation for its trial and appellate programs in the 1995 *U.S. News and World Report's* survey of graduate school programs. Stetson and the Florida Baptists terminate all formal and informal relationships. The endowment climbs to over \$80 million. In a formal inaugural ceremony, the Howard Thurman Program is established to integrate the works of scholars and community leaders to seek solutions to social, religious and ethnic problems.
- 1997-98 Named for Mark and Lynn Hollis of Lakeland, the \$4.3 million, 33,000-square-foot Hollis Center for fitness and recreation is dedicated.

- 1998-99 Celebrated author and observer of the national scene with more than 30 years in print and broadcast journalism, Bill Moyers delivers the 1998 James A. Stewart Lecture, addressing the topic “Ethics for a New Millennium.” Six task forces are established within the university's newly formed Values Council as a means to develop strategic plans for implementing Stetson’s commitment to its core values. The council's activities and plans underscore the university’s mission to be an inclusive community, recognizing the dignity, worth and equality of all people. The Stetson College of Law opens a \$8.5 million Law Library and Legal Information Center that is one of the most technologically-advanced facilities of its kind in the Southeast, housing a 370,000-volume library collection and hundreds of network connections to access online legal resources.
- 1999 The opening of Melching Field at Conrad Park – a \$4.5 million state-of-the-art baseball stadium funded through a collaboration with Stetson, the City of DeLand and the DeLand Sports Redevelopment Association. Final phase of the \$200 Million Campaign, the largest fund-raising effort in Stetson’s history, begins during Stetson Weekend. The \$5.3 million expansion and renovation of the duPont-Ball Library is completed and dedicated. First annual Undergraduate Scholarship and Performance Day showcases students’ academic achievements in a campus-wide celebration open to the public.
- 2000 Author of the bestseller, *Reason for Hope: A Spiritual Journey*, and world-renowned primatologist Jane Goodall delivers the James A. Stewart Lecture. Christine Lynn of Boca Raton donates \$10 million for extensive renovations to the Eugene M. and Christine Lynn Business Center, which houses the School of Business Administration. Construction begins on the permanent home for the Stetson University Center at Celebration. Stetson acquires \$2.6 million Oscar Bluemner art collection.
- 2001 The \$200 Million Campaign concludes with a victory celebration during Stetson Weekend in January. The original goal of \$200 million was surpassed, with the campaign raising \$235,584,479. Stetson’s third campus, the \$7.2 million Stetson University Center at Celebration, opens its doors to students for the fall semester. Construction of the first phase of a \$2 million Amelia Avenue safety and beautification streetscape project is complete -- adding gates, brick pavers and landscaping to the roadway that borders the university.
- 2002 Historic Holler Fountain is brought back to life and beautifies the DeLand campus again with light and spray displays. The Roland George Investments Program team defends its national title at the student portfolio management competition. Stetson breaks ground for a women’s fastpitch softball complex. A \$12 million renovation of the Lynn Business Center is complete and the facility opens in the fall -- featuring technology-advanced classrooms and labs in a state-of-the-art facility. The Stetson College of Law opens a new student life center that houses offices for career services, student life and student organizations, as well as a lounge, fitness center and swimming pool. The law school also launches a part-time law program and breaks ground for a law center and campus in Tampa.
- 2003 Trustees approve a new landscaping policy, to plant only trees and shrubs native to Florida. The Lynn Business Center is the first building in Florida certified as a green building by the U.S. Green Building Council under its Leadership in Energy and Environmental Design (LEED) Green Building Rating System™. Our environmental efforts win recognition from the Council for Sustainable Florida, which gives Stetson one of only 16 “2003 Sustainable Florida Awards.” An Executive Master of Business Administration (EMBA) degree program for senior-level executives begins at the Stetson University Center at Celebration. A gift of \$1 million from Martha Apgar honoring the late Rev. LeRoy Lawson makes possible the Lawson Lecture Series, the Lawson Endowed Scholarship for students in Philosophy, and the Lawson Seminar and Reading Room in Elizabeth Hall.

- 2004 The College of Law opens its Tampa Law Center, a three-story, 73,500-square-foot building offering evening courses for Juris Doctor students and housing the Tampa branch of Florida's Second District Court of Appeal. Stetson welcomes its largest-ever incoming class and its largest overall student body in the fall semester. Three hurricanes cross West Volusia closing Stetson for 9 class days and causing an estimated \$400,000 in damages. A new Health and Wellness Task Force joins the six other Values Council task forces. A new Family Business major, the first in the nation, strives to give students interested in family businesses credibility and marketability.
- 2005 Dr. Leonard Nance is named Dean of First Year Studies, inaugurating a program designed to improve first year students' college experience at Stetson. The School of Business Administration begins a new Executive Passport program to help working adults with 40 to 60 hours of college credit earn a bachelor's degree in Business Administration in Saturday classes at the Celebration campus. Hulley Tower, which housed the Eloise Chimes, is taken down to its stone base when it is found that years of water damage have made it an unsafe structure. Construction begins on six new student residence buildings; one is a traditional residence hall, the other five offer apartment living. Stover Theatre celebrates its 75th anniversary as a performance hall, and the Theater Program at Stetson marks its 100th season of presenting plays.
- 2006 Music student Donovan Singletary wins the prestigious Metropolitan Opera's National Council Grand Finals and political science student Greg Nolan is awarded the Truman Scholarship. Dr. Greg Sapp is named to the new Marchman Chair of Civic and Social Responsibility. Drs. Ranjini Thaver and Neal Long of Economics win national service-learning honors from Campus Compact for their microcredit program. A \$17.2 million residence hall and "University Village" apartment complex opens for 338 students. Dolly and Homer Hand donate \$1 million to build a center for Stetson's Oscar Bluemner art collection. Martha Apgar gives \$1 million to fund the John N. Apgar Jr. Lecture Series featuring major conservative speakers. The Marshall and Vera Lea Rinker Foundation gives \$1 million toward an environmental learning center near the Gillespie Museum and native landscaping on campus. Former U.S. Rep Clay Shaw donates the papers from his 13 terms in Congress to Stetson, his alma mater.

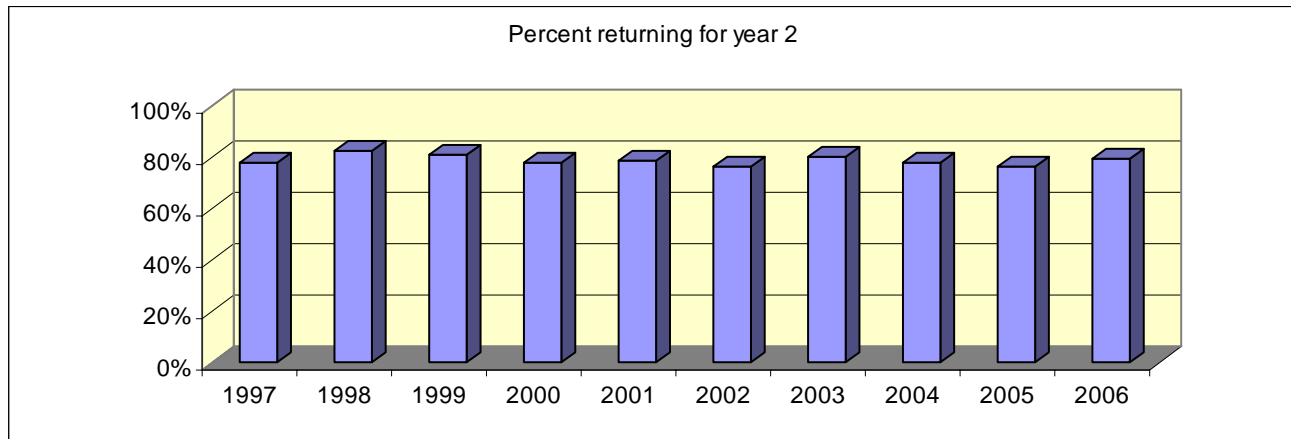
KEY INDICATORS

Student Retention Analysis

In the Fall of 2005, Stetson enrolled 548 new, first-time-in-college students and 97 new transfer students. Eighty percent of the new, first-time-in-college students re-enrolled for classes in the Fall of 2006 and 73.2% of the transfer students re-enrolled. The tables and graphs on this page describe longitudinal retention rates and characteristics of returners & non-returners.

Percent of New (first-time-in-college) Students Returning for Second Year

1997	1998	1999	2000	2001	2002	2003	2004	2005	2006
78%	83%	81%	78%	79%	77%	81%	78%	77%	80%



Characteristics of Returning Students

		% of New Freshman Fall '05 Returning in Fall 2006			% of New Transfers Fall '05 Returning in Fall 2006		
		Initial cohort	# returning	%	Initial cohort	# returning	%
TOTAL		548	437	79.7%	97	71	73.2%
Gender	Female	312	240	76.9%	56	39	69.6%
	Male	236	197	83.5%	41	32	78.0%
Race	International	15	13	86.7%	6	6	100%
	African American	16	13	81.3%	4	1	25.0%
	Latino/a	53	44	83.0%	10	9	90.0%
	Asian American	11	9	81.8%	1	0	0
	Native American	4	4	100%	2	2	100%
	White	396	316	79.8%	69	49	71.0%
	Unknown, Other	53	38	71.7%	5	4	80.0%
School	Arts & Sciences	238	191	80.3%	55	35	63.6%
	Business	139	120	86.3%	26	23	88.5%
	Music	55	44	80.0%	10	8	80.0%
	Discovery	116	82	70.7%	6	5	83.3%

Retention Analysis, continued

Cumulative GPA (end of Spring 2006) of Fall 2005 new students

	Returners			Non-Returners		
	Mean	Median	Std. Dev.	Mean	Median	Std. Dev.
New Freshman	2.90	2.94	.6610	2.12	2.10	.9044
New Transfers	3.03	3.09	.5931	2.36	2.33	.9275

Average SAT of Fall 2005 new students

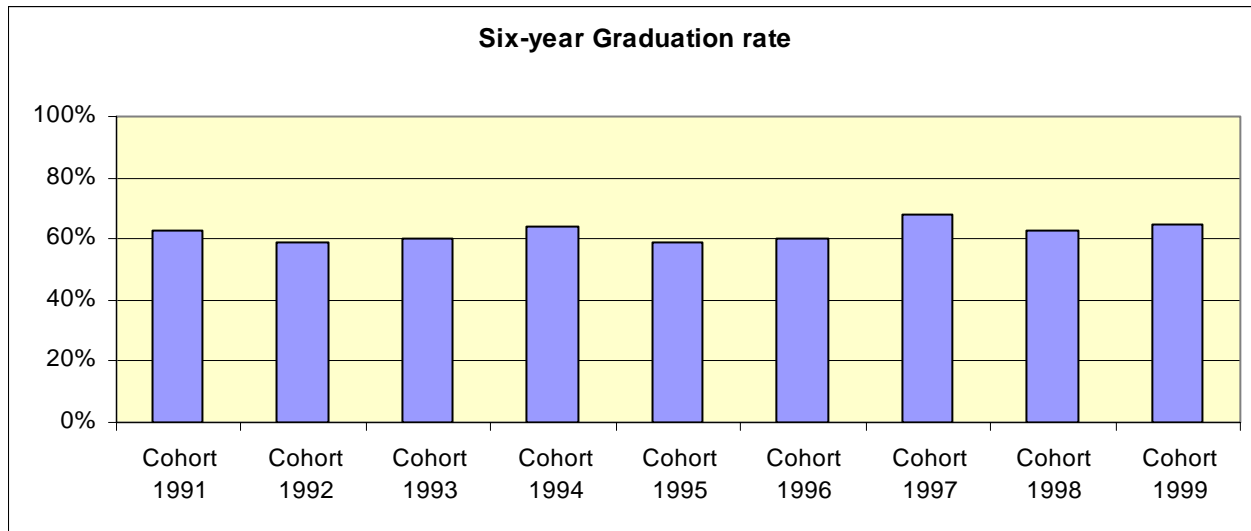
	Returners			Non-Returners		
	Mean	Median	Std. Dev.	Mean	Median	Std. Dev.
New Freshman	1167	1160	125.660	1099	1090	107.689
New Transfers	1067	1080	175.012	1048	1005	121.590

Average HS GPA of Fall 2005 new students

	Returners			Non-Returners		
	Mean	Median	Std. Dev.	Mean	Median	Std. Dev.
New Freshman	3.80	3.83	.5433	3.63	3.60	.4958
New Transfers	3.33	3.27	.5312	3.33	3.34	.4799

Graduation Rates

	New Freshmen	4-year	5-year	6-year
Cohort: 1991	460	52%	62%	63%
Cohort: 1992	501	46%	57%	59%
Cohort: 1993	483	49%	58%	60%
Cohort: 1994	474	54%	62%	64%
Cohort: 1995	464	49%	57%	59%
Cohort: 1996	416	51%	60%	60%
Cohort: 1997	504	56%	66%	68%
Cohort: 1998	539	52%	62%	63%
Cohort: 1999	548	57%	64%	65%



Senior Survey Statistics - Postgraduate Plans

The following statistics are from the HEDS Spring 2005 Senior Survey of 357 May 2005 graduates; 270 surveys were returned for a response rate of 75.6%

Primary Activity After Graduation	Percent
Employment Full-Time	55.7%
Employment Part-Time	3.9%
Grad School Full-Time	31.0%
Grad School Part-Time	.4%
Additional U-grad coursework	1.6%
Military Service	.4%
Volunteer Activity	.8%
Traveling	2.0%
Undecided	3.5%
Other Activity	.8%

Degree Desired	Fall 2005 plans	Future plans*
Master's A & S – M.A./M.S.	28.6%	32.1%
Master's Business – M.B.A.	15.3%	29.6%
Other Professional Master's Degree	6.1%	3.8%
Law Degree	17.3%	5.7%
Medical Degree	10.2%	6.9%
Ph.D.	5.1%	22.0%
Other Doctoral		5.7%
Other Degree	17.3%	11.9%

*Multiple Responses Allowed

Spring 2005 Senior Survey Results, continued

Subject Area of Planned Degree

	Fall 2005	Future		Fall 2005	Future
Law	19.8%	6.8%	Physics	2.1%	
Medicine	10.4%	5.4%	Engineering		.7%
Architecture		.7%	Anthropology		.7%
Business	22.9%	32.0%	Economics		1.4%
Communications, Media	2.1%	5.4%	Political Science/Govt.	3.1%	2.7%
Education	5.2%	12.2%	Psychology	4.2%	6.1%
Health Related Field	5.2%	4.8%	Sociology	2.1%	2.7%
Social Work		.7%	English		5.4%
Theology	3.1%	4.1%	Fine/Performing Arts	8.3%	9.5%
Biological/Life Sciences	6.3%	4.1%	Foreign Languages	4.2%	3.4%
Chemistry	1.0%	.7%	History		3.4%
Earth Science		1.4%	Humanities		2.7%

Long Term Career Plans

Accounting	3.0%	Law	6.8%
Advertising, Public Relations	3.0%	Library or Information Science	.9%
Architecture, Design, or Planning	.9%	Management	3.4%
Arts/Entertainment	6.8%	Marketing, Sales	3.8%
Biology/Life Science	2.1%	Mathematics, Statistics	.4%
Broadcasting, Media Productions	.4%	Medical Doctor	4.3%
Business Owner, Entrepreneur	10.6%	Medicine, Health Care, Other	6.4%
College/Univ Administration	1.3%	Military Science	.9%
College/Univ Teaching or Research	9.4%	Physical Science	.4%
Education, Teaching/Admin	7.2%	Publishing, Print Journalism	.4%
Engineering	.4%	Religious Ministry or Service	1.7%
Finance	4.3%	Social Science or Services	2.6%
Foreign Service, Diplomacy	1.7%	Sports, Recreation	1.7%
Government, Politics, Public Policy	2.6%	Other	4.7%
Homemaker	1.7%	Undecided	5.1%
Hospitality, Travel/Tourism	1.3%		

Tuition and Fees

Stetson - Historical

Year	Tuition	Undergraduate		Per Credit Hour Fees	
		Fees	Total	U-Grad	Graduate
1987 - 1988	\$6,730	\$280	\$7,010		\$155
1988 - 1989	\$7,370	\$305	\$7,675		\$170
1989 - 1990	\$8,100	\$340	\$8,440		\$185
1990 - 1991	\$8,900	\$385	\$9,285		\$200
1991 - 1992	\$9,610	\$410	\$10,020	\$320	\$215
1992 - 1993	\$10,660	\$450	\$11,110	\$355	\$235
1993 - 1994	\$11,510	\$485	\$11,995	\$385	\$255
1994 - 1995	\$12,315	\$555	\$12,870	\$410	\$275
1995 - 1996	\$13,110	\$590	\$13,700	\$440	\$295
1996 - 1997	\$14,100	\$635	\$14,735	\$470	\$315
1997 - 1998	\$15,100	\$665	\$15,765	\$500	\$350
1998 - 1999	\$15,850	\$800	\$16,650	\$525	\$370
1999 - 2000	\$16,640	\$870	\$17,510	\$550	\$390
2000 - 2001	\$17,475	\$910	\$18,385	\$580	\$410
2001 - 2002	\$18,350	\$960	\$19,310	\$610	\$430
*2002 - 2003	\$19,950	\$1275	\$21,225	\$650	\$430
*2003 - 2004	\$21,300	\$1340	\$22,640	\$685	\$450**
*2004 - 2005	\$22,730	\$1405	\$24,135	\$725	\$475**
*2005 - 2006	\$23,975	\$1475	\$25,450	\$760	\$500**
*2006 - 2007	\$25,450	\$1560	\$27,010	\$795	\$525**

*New Students

**DeLand campus, Celebration Education majors

2006-07 Undergraduate Tuition by entry date

	Tuition	Fees
Students entering during fiscal year 2005-06 and 2006-07	\$25,450	\$1,560
Students entering during fiscal year 2004-05	\$35,345	\$1,560
Students entering during fiscal year 2003-04 and before	\$25,090	\$1,560

2006-07 Graduate tuition - per credit hour

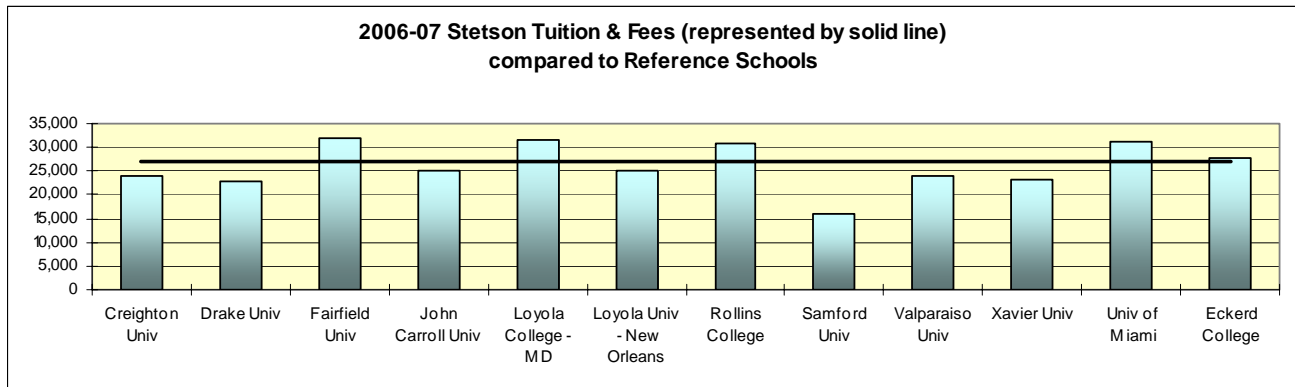
DeLand Campus	\$525
Celebration Campus: Teacher Education	\$525
Counselor Education	\$525
Business Administration	\$625
Law School: JD/MBA	\$650

2006 - 07 Peer Schools Comparison - Tuition and Fees

Creighton University	23,832	Loyola Univ – New Orleans	25,246*
Drake University	22,682	Rollins College	30,860
Fairfield University	31,955	Samford University	16,000
John Carroll University	25,072	Valparaiso University	24,000
Loyola College – MD	31,500	Xavier University	23,240
		Stetson University	26,905
Other			
University of Miami	31,232	Eckerd College	27,618

Source: US News

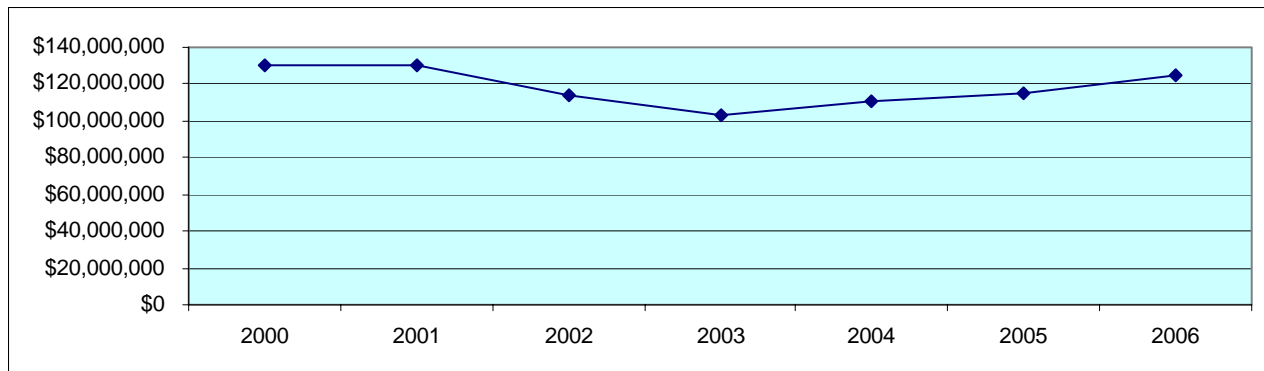
*from college website



Financial Information

Endowment - Market Value

5/31/00	5/31/01	5/31/02	5/31/03	5/31/04	5/31/05	5/31/06
\$130,066,800	\$130,407,000	113,679,000	103,268,623	111,045,000	114,753,000	124,428,000



Endowment - Reference Schools

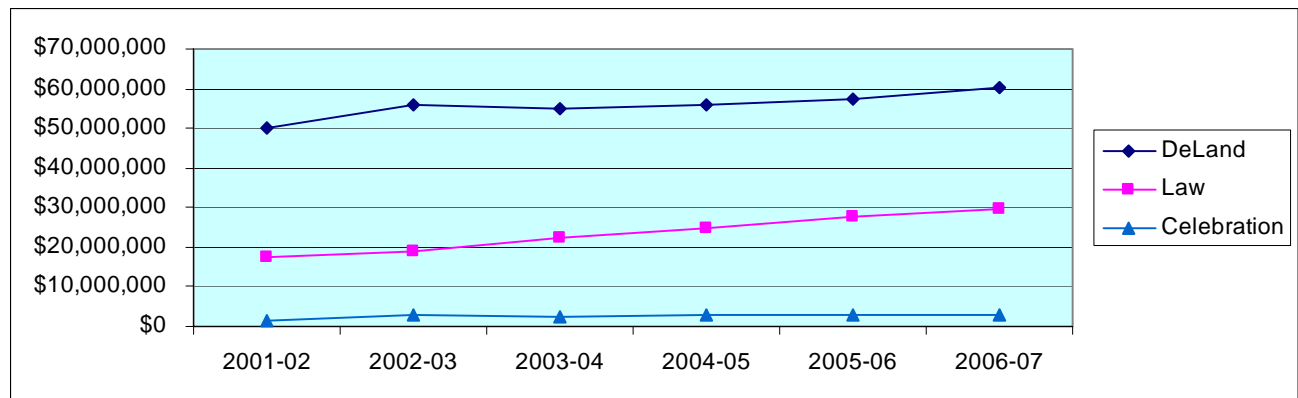
School	Market Value End FY05	National Rank in Endowment Assets
Loyola Univ - New Orleans*	\$304,244,000	152nd
Samford University	\$255,336,000	186th
Creighton University	\$239,517,000	195th
Rollins College	\$268,685,000	177th
Fairfield University	\$179,679,000	233rd
John Carroll University	\$142,390,000	274th
Loyola College - MD	\$143,610,000	272nd
Valparaiso University	\$143,096,000	273rd
Stetson University	\$114,753,000	311th
Drake University	\$119,020,000	305th
Xavier University	\$100,298,000	334th

Source: 2005 NACUBO Endowment Study

*End of Year FY04

Annual Budget

	2001-02	2002-03	2003-04	2004-05	2005-06	2006-07
DeLand	\$49,944,000	\$55,670,000	\$54,902,000	\$56,105,000	\$57,236,000	\$60,099,000
Law	\$17,285,000	\$19,188,000	\$22,287,000	\$25,013,000	\$27,576,000	\$29,625,000
Celebration	\$1,524,000	\$3,118,000	\$2,550,000	\$2,864,000	\$2,691,000	\$2,891,000

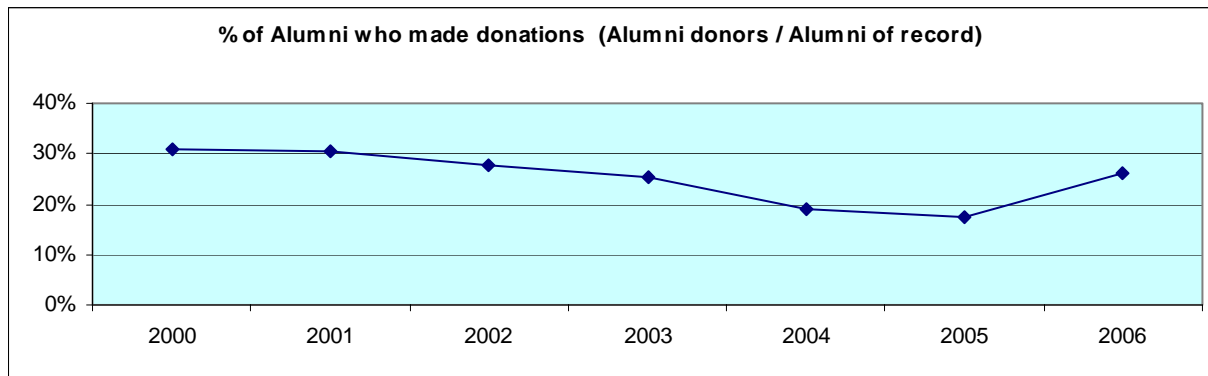


Alumni Giving Profile

	2000	2001	2002	2003	2004*	2005*	2006*
Alumni of record	18,724	14,911	14,718	14,341	12,422	12,935	8,802
Alumni solicited	14,358	10,255	10,116	9,528	6,742	7,384	8,221
Alumni donors	5,759	4,534	4,069	3,653	2,390	2,274	2,286
Giving percent of record	30.8%	30.4%	27.6%	25.5%	19.2%	17.6%	26.0%

Source: CAE Report

*undergraduate only



Student Financial Aid

Scholarships/Grants (2006-2007)

<i>Undergraduates</i>	Scholarships & Grants	
	Total	Average
Institutional	\$24,003,615	\$11,766
Federal Need-based	\$1,815,201	\$3,682
Federal Non-need-based	\$36,000	\$1,500
Florida Merit	\$3,010,309	\$2,588
Florida Need-based	\$469,300	\$1,282
Florida Non-need-based	\$4,563,875	\$2,783
External	\$469,176	\$2,418
TOTAL Scholarships/Grants	\$34,367,476	\$15,977

Total Aid and Self-Help* (2006-2007)

	New Full-time Freshman	Full-time Undergrads
Total financial aid	\$13,685,372	\$49,057,223
Average financial aid package	\$24,179	\$23,032
Total Self-help	\$1,943,968	\$10,694,986
Average self-help	\$6,191	\$8,189

*Self help includes work-study and loans.

ACADEMIC PROGRAMS

Degrees and Programs Offered (2006-07)

College of Arts and Sciences

American Studies	B.A.	Latin American Studies	B.A.
Aquatic & Marine Biology*	B.S.	Mathematics	B.A., B.S.
Art	B.A.	Medical Technology	B.S.
Biology	B.A., B.S.	Modern Languages	
Biochemistry*	B.S.	French	B.A.
Chemistry	B.S.	German	B.A.
Communication Studies	B.A.	Spanish	B.A.
Computer Information Systems*	B.S.	Molecular Biology*	B.S.
Computer Science	B.S.	Music	B.A.
Digital Arts	B.A.	Philosophy	B.A.
Economics	B.A., B.S.	Physics	B.S.
Elementary Education*	B.A., B.S.	Political Science	B.A., B.S.
English	B.A.	Psychology	B.A., B.S.
Environmental Science	B.A., B.S.	Religious Studies	B.A.
Geography	B.A., B.S.	Russian Studies	B.A.
History	B.A.	Secondary Education**	B.A., B.S.
Humanities	B.A.	Social Science*	B.A.
Integrative Health Sciences		Sociology	B.A., B.S.
Health Science	B.S.	Sport Management	B.A.
Rehabilitative Studies*	B.S.	Theatre Arts	B.A.
International Studies	B.A.		

* Minor NOT available

** Secondary Education programs are available in Biology, Chemistry, English, Modern Languages, Mathematics and Social Science

Minors only

Africana Studies	Art History & Studio Art	Journalism
Anthropology	Creative Writing	Russian
Applied Ethics	Health Care Issues	Women and Gender Studies

Cooperative Programs

Engineering	Pre-Med	Forestry and Environmental Studies
Medical Technology	Pre-Law	

School of Business Administration

Accounting Information Systems	B.B.A.	International Business*	B.B.A.
Economics*	B.B.A.	Management	B.B.A.
Family Business	B.B.A.	Management Information Systems	B.B.A.
Finance	B.B.A.	Marketing	B.B.A.
General Business Administration	B.B.A.		

* Minor NOT available

Minors only

Applied Statistics	Business Law
--------------------	--------------

School of Music

B.A. Music
B.A. Digital Arts - Music Track

B.M.E. Instrumental/General
B.M.E. Vocal/General

B.M. Performance
Guitar
Orchestral Instrument
Piano/Organ
Voice

B.M. Theory and Composition
B.M. Elective Studies in a Specific Outside Field
Digital Arts
Business
Other

Minors

General Music
(must be added to a non-music degree)

Church Music
(must be added to a music degree)

Graduate

Curriculum and Instruction	Ed.S.	Mental Health Counseling	M.S.
Educational Leadership	M.Ed., Ed.S.	Reading Education	M.Ed.
English	M.A.	School Counseling	M.S., Ed.S.
Exceptional Student Education	M.Ed.	Accounting	M.Acc.
Marital, Couple, & Family Counseling/Therapy	M.S.	Executive MBA	M.B.A.
		General Business Administration	M.B.A.

Enrollment by Major - Undergraduate (Fall 2006)

Includes Double Majors

College of Arts and Sciences

Major	Frequency	% of A&S Majors	Major	Frequency	% of A&S Majors
American Studies	8	0.7%	History	42	3.5%
Aquatic & Marine Biology	23	1.9%	Humanities	15	1.2%
Art	35	2.9%	International Studies	15	1.2%
Biochemistry	25	2.1%	Latin American Studies	2	0.2%
Biology	108	8.9%	Mathematics	22	1.8%
Chemistry	16	1.3%	Med Tech	2	0.2%
Communication Studies	68	5.6%	Molecular Biology	8	0.7%
Computer Information Systems	2	0.2%	Music	7	0.6%
Computer Science	18	1.5%	Philosophy	20	1.6%
Digital Arts-Art Track	22	1.8%	Physics	20	1.6%
Digital Arts-Computer Science	2	0.2%	Political Science	131	10.8%
Digital Arts-Music Track	4	0.3%	Psychology	137	11.3%
Economics – BA	5	0.4%	Rehabilitative Studies	23	1.9%
Elementary Education	80	6.6%	Religious Studies	20	1.6%
English-Sec Education Certif	5	0.4%	Russian Studies	9	0.7%
English	94	7.7%	Social Science-Sec Ed Certif	5	0.4%
Environmental Science	17	1.4%	Social Science	4	0.3%
French	10	0.8%	Sociology	30	2.5%
Geography	1	0.1%	Spanish	28	2.3%
German - Sec Education	2	0.2%	Sport Management	44	3.6%
German	8	0.7%	Theatre Arts	26	2.1%
Health Science	53	4.4%	Total A&S Majors	1216	100.0%

School of Business

Major	Frequency	% of Bus. Majors
Accounting Info Systems	80	10.9%
E-Business Technology	14	1.9%
Economics – BBA	6	0.8%
Family Business	18	2.5%
Finance	103	14.1%
General Business Admin	241	32.9%
International Business	80	10.9%
Management	79	10.8%
Marketing	111	15.2%
Total Business Majors	732	100.0%

School of Music

Major	Frequency	% of Mus. Majors
BM Outside Field-Business	14	6.6%
BM Outside Field-Digital Art	5	2.4%
BM Outside Field	17	8.1%
Guitar	6	2.8%
Music Ed-Instrumental/Gen	56	26.5%
Music Education-Vocal	29	13.7%
Orchestral Instrument	28	13.3%
Piano/Organ	13	6.2%
Theory & Comp-Comp	8	3.8%
Theory & Comp:Theory	4	1.9%
Vocal/General	1	0.5%
Voice	30	14.2%
Total Music Majors	211	100.0%

Discovery (Undeclared)	244
No Major Necessary, visiting, transient, etc.	8

Enrollment by Minor - Undergraduate (Fall 2006)

Includes Double Minors

	School of Student's Major				School of Student's Major		
	A & S	Business	Music		A & S	Business	Music
Accounting Minor	1	6	0	Health Care Issues	7	0	0
Africana Studies	0	1	0	Health Science	6	0	0
American Studies	3	2	0	History	15	1	0
Anthropology	7	0	0	Humanities	2	0	0
Applied Ethics Minor	5	0	0	International Studies	12	0	0
Applied Statistics	1	0	0	Journalism	27	1	0
Art	13	4	0	Latin American Studies	2	1	0
Art History	15	1	1	Management	6	9	0
Biology	5	0	0	Marketing	6	7	0
Business Law	19	40	0	Mathematics	11	2	0
Chemistry	3	0	0	Music	1	0	0
Communication Studies	8	8	0	Music Minor	24	9	0
Computer Science	3	0	0	Philosophy	2	0	0
Digital Arts	9	9	0	Physics	3	0	0
E-Business Technology	6	48	1	Political Science	12	4	0
Economics	4	1	0	Psychology	23	7	0
Education	16	1	0	Religious Studies	42	4	2
English	13	2	1	Russian	3	0	0
English – Creative Writing	16	2	1	Russian Studies	2	0	0
Environmental Science	3	0	0	Sociology	11	6	0
Family Business	4	9	0	Spanish	33	27	1
Finance	4	6	0	Sport Management	4	8	0
French	6	6	0	Theatre Arts	7	0	1
General Business Admin	26	2	0	Women & Gender Studies	8	0	0
German	8	6	1	TOTALS	467	240	9

Enrollment by Major - Graduate (Fall 2006)

Major	#	%	Major	#	%
Curriculum and Instruction	3	0.7%	Master of Accountancy	19	4.4%
Educational Leadership	49	11.3%	Master of Business Admin	160	37.0%
English	10	2.3%	Mental Health Counseling	30	6.9%
Except Student ED/Varying Exc	1	0.2%	No Major Necessary	31	7.2%
Exceptional Education	5	1.2%	Reading Education	20	4.6%
Law	42	9.7%	School Counseling	26	6.0%
Marital, Couple & Fam CSL/Ther	36	8.3%	TOTALS	432	100.0%

Enrollment by Major - Undergraduate (Historical)

Includes Double Majors

Arts & Sciences	1999	2000	2001	2002	2003	2004	2005	2006
American Studies	6	6	5	5	5	8	12	8
Aquatic & Marine Biology			7	13	16	20	19	23
Art	31	42	36	35	34	36	37	35
Biochemistry	32	31	29	20	15	17	23	25
Biology	114	110	113	95	105	98	94	108
Biology - Molecular	1	3	5	4	3	6	8	8
Biology – special			1	2				
Chemistry	15	14	17	14	12	16	12	16
Communication Studies	55	73	72	69	57	73	78	68
Computer Info Systems	4	11	14	4	2	3	3	2
Computer Science	54	49	34	26	18	13	24	18
Digital Arts	74	82	67	63	51	44	28	28
Economics	3	4	11	10	7	5	5	5
Education - Elementary	72	78	75	89	99	92	88	80
Education – General			10	1	17			
Education - Secondary	17	17	21	29	21	15	21	12
English	66	72	68	67	83	97	90	94
Environmental Science	24	19	19	21	17	13	20	17
Foreign Language - French	10	11	8	6	8	6	7	10
Foreign Language - German	4	5	3	8	6	7	12	8
Foreign Language - Spanish	20	20	21	17	17	17	22	28
Geography	7	6	4	2	2			1
History	28	31	20	34	42	39	36	42
Honors								
Humanities	7	4	8	10	8	9	12	15
Integ Health - Health Science			15	39	35	47	45	53
Integ Health -Rehab Studies		2	9	18	18	17	19	23
International Studies	6	6	13	18	18	29	27	15
Journalism self-defined								
Latin American Studies		1	1	3	3	2	3	2
Mathematics	18	13	9	10	15	19	31	22
Med Tech		1		1		1	2	2
Music Lib. Arts	3	3	7	3	9	7	9	7
Philosophy	12	13	9	11	14	14	22	20
Physical Education	1							
Physics	13	21	17	16	15	14	15	20
Political Science	73	102	99	108	113	106	116	131
Psychology	101	132	135	146	139	143	139	137
Religious Studies	15	16	16	29	28	34	33	20
Russian Studies	2	2	2	16	13	13	10	9
SES-Athletic Training	24	22	14	5	2			
SES-Exercise Science	51	45	27	7	3			
SES-Movement Therapy	24	13	1					
SES-Sport Communications	4	1						
Social Science	2	4	3	2	1	7	8	4
Sociology	47	45	35	37	42	38	39	30
Sport Admin/Mgmt	39	44	40	35	42	48	46	44
Theatre Arts	11	11	13	14	17	21	22	26
Total	1090	1185	1133	1159	1172	1241	1237	1216

Enrollment by Major - Undergraduate (Historical), continued

Business	1999	2000	2001	2002	2003	2004	2005	2006
Accounting Info Systems	87	81	60	55	59	60	75	80
Business Economics	7	10		14	14	9	7	6
Computer Info Systems	34	32	30	17	4			
Electronic Business Tech			13	40	37	37	24	14
Family Business						5	19	18
Finance	77	88	99	102	107	93	91	103
General Business Admin	221	239	232	209	216	199	217	241
International Business	56	79	86	77	63	65	82	80
Management	80	72	73	72	81	89	88	79
Marketing	92	104	110	119	107	110	99	111
Total	654	705	703	705	688	667	702	732

Music	1999	2000	2001	2002	2003	2004	2005	2006
Bach of Music w/Bus Adm	11	16	14	13	15	5	7	14
Bach of Music w/outside Field	16	6	13	20	19	27	23	17
Bachelor of Music w/Dig Arts	8	5	8	5	4	3	2	5
Music Education	82	74	71	69	70	79	80	85
Music Lib. Arts	3	3	7	3	9	7	9	
Musical Theater	1					1	1	
Performance:								
Guitar	8	10	10	8	7	8	8	6
Orchestral Instrument	23	14	21	21	26	24	30	28
Piano								
Piano/Organ	5	7	11	9	17	17	10	13
Voice	29	38	54	36	34	26	30	31
Theory & Composition	6	16	11	13	9	10	11	12
Undeclared (Music)	8	1	1					
Total	197	187	214	194	201	200	202	211

No major necessary, visiting transient					12	4	12	8
Discovery	224	192	220	193	226	287	233	244

Degrees Awarded by Major - Undergraduate (Historical)

(includes second majors)

Arts & Sciences	7/1/99 to 6/30/00	7/1/00 to 6/30/01	7/1/01 to 6/30/02	7/1/02 to 6/30/03	7/1/03 to 6/30/04	7/1/04 to 6/30/05	7/1/05 to 6/30/06
American Studies	1	2	2	3		3	2
Art	6	8	11	8	5	7	9
Biology	20	24	19	24	26	25	21
Biology, Aquatic						4	1
Biology, Molecular				1	1	3	2
Bio-Chemistry	5	4	10	11	1	3	4
Chemistry	6		2	3	2	1	2
Communications	10	19	22	21	16	19	12
Communications, Other	1	2					
Computer Information Systems							1
Computer Science	5	9	5	7	6	1	3
Web Page, Digital/Multimedia	4	16	15	20	11	15	8
Economics	2	1	2	3	2	2	1
English	12	22	23	11	20	21	21
Environmental Science / Studies	6	5	7	4	7	3	6
Modern Language: French	1	2	3	1	2	3	1
Modern Language: German		2		1		1	3
Modern Language: Spanish	1	8	8	6	5	12	3
Geography	2	3	2		2		
Health Sciences			2	10	3	17	10
History	11	6	4	5	8	10	17
Humanities	5	4	2	4	3	1	1
International Studies/Sciences		2	1	4	2	6	7
Latin American Studies					1	1	
Linguistics, Comparative Study					1		
Mathematics	3	3	4	3	4	2	6
Medical Technology	1						
Music – Liberal Arts			3			4	
Philosophy	1	2	4	4	4	6	6
Physics	1	5	4	1	5	2	2
Political Science	10	12	19	20	24	18	21
Physiological PSY, Psy-biology			1				
Psychology	24	32	29	31	34	27	39
Religious Studies	8	5	6	9	6	12	12
Russian Studies		1		2	2	6	4
SES: Athletic Trng, Sports Med	4	3	6	2	2		
SES: Ex Sci & Mvmt Therapy	20	20	15	3	3	5	5
SES: Sport & Fitness Admin	8	12	12	10	10	6	17
Social Sciences	2	3	7	2	4	2	3
Sociology	11	22	11	10	13	8	15
Teacher Educ – Elem	20	16	18	18	28	21	27
Teacher Educ - English	1						
Teacher Educ – General						1	1
Theatre Arts	1	3	3	1	3	5	5
Total	213	278	282	263	266	283	298

Degrees Awarded by Major - Undergraduate (Historical), continued

Business	7/1/99 to 6/30/00	7/1/00 to 6/30/01	7/1/01 to 6/30/02	7/1/02 to 6/30/03	7/1/03 to 6/30/04	7/1/04 to 6/30/05	7/1/05 to 6/30/06
Accounting	15	20	18	10	20	16	14
Business Administration	37	45	29	30	36	33	35
Business Economics	2	2	3	1	4	3	3
Electronic Business Tech				10	14	15	7
Family Business							5
Finance	22	26	34	30	36	32	30
Information Resources (CIS)	5	12	6	10	3		
International Business	7	8	15	18	15	9	14
Management	24	16	24	29	26	28	22
Marketing	33	41	39	43	26	39	28
Total Business	145	170	168	181	180	175	158

Music							
Music Perf – Piano & Organ		1	1		3	3	2
Music Perf – Orch Instrument	6	2	8	1	2	4	4
Music Perf – Viola, Guitar	1		2	2	1	1	2
Music Perf – Voice	2	7	4	6	6	4	1
Music – Other	5	1	5	12	9	12	16
Music Theory & Composition		2	1	2	2	1	6
Teacher Educ – Music	11	12	16	19	10	5	10
Total Music	25	25	37	42	33	30	41

TOTAL	383	473	487	486	479	488	497
--------------	------------	------------	------------	------------	------------	------------	------------

Degrees Awarded - by Degree Type (Historical)

	1999-00	2000-01	2001-02	2002-03	2003-04	2004-05	2005-06
BACHELORS	383	473	487	486	479	488	497
Arts & Sciences	213	278	282	263	266	283	298
Business	145	170	168	181	180	175	158
Music	25	25	37	42	33	30	41
MASTERS	122	119	136	118	182	181	223
Arts & Sciences	48	40	42	53	78	76	96
Business	74	79	94	65	104	105	127
LAW	243	257	240	255	284	254	304

College of Law

Law School Tuition – Full-time

1999-00	2000-01	2001-02	2002-03	2003-04	2004-05	2005-06	2006-07
\$20,350	\$21,165	\$21,905	\$22,785	\$23,924	\$24,760	\$26,280	\$27,860

Law School Tuition – Full-time Summer Session

1999	2000	2001	2002	2003	2004	2005	2006
\$5,100	\$5,305	\$5,475	\$5,695	\$5,980	\$6,200	\$6,550	\$6,950

Law School Key Facts

- Ranked No. 1 for trial advocacy and No. 4 for legal writing by U.S. News & World Report
- Small classes and individual attention to student needs
- Nationally acclaimed faculty who excel in their fields
- State-of-the-art library, courtrooms and classrooms
- Centers for Excellence in Advocacy, Elder Law, Higher Education Law and Policy, and International Law
- Home to the National Clearinghouse for Science, Technology and the Law
- Headquarters, National Conference of Law Reviews
- Home to three academic journals, including the Stetson Law Review
- Honors program for top-ranked students
- 2005 world champions and 2006 silver medalists at the Vis International Arbitration Moot in Vienna, Austria
- One of only three law schools to share space with a working court, Florida's Second District Court of Appeal
- Vibrant campus life with diverse student organizations, interscholastic activities and competitions
- Summer programs in Buenos Aires, Argentina; Tianjin, China; Granada, Spain; The Hague, Netherlands; and Freiburg, Germany
- The first law school in Florida to require pro bono service by students and faculty
- Excellent career development services
- Campuses in beautiful Gulfport and Tampa, Florida

For more information on the College of Law, visit www.law.stetson.edu.

STUDENT INFORMATION

SAT / ACT Scores

Fall 2006 New Freshmen

	75th Percentile	25th Percentile	Average
SAT - Math	610	500	557
SAT – Reading	620	500	564
SAT – Total	1220	1030	1132
ACT Math	25	20	23
ACT English	27	21	24
ACT Composite	27	21	24
High School GPA	4.11	3.37	3.76

91% of new freshman submitted SAT scores

34% of new freshman submitted ACT scores

99% of new freshman submitted High School GPA

Range of SAT / ACT Scores

Fall 2006 New Freshmen

<u>SAT</u>	<u>Reading</u>	<u>Math</u>	<u>ACT</u>	<u>Composite</u>	<u>English</u>	<u>Math</u>
700 - 800	7.0%	3.9%	30 - 36	7.2%	12.3%	5.6%
600 - 699	31.0%	26.0%	24 - 29	48.2%	41.0%	43.1%
500 - 599	39.5%	48.4%	18 - 23	43.1%	40.0%	43.1%
400 - 499	20.0%	20.2%	12 - 17	1.5%	6.2%	8.2%
300 - 399	2.5%	1.5%	6 - 11	--	.5%	--

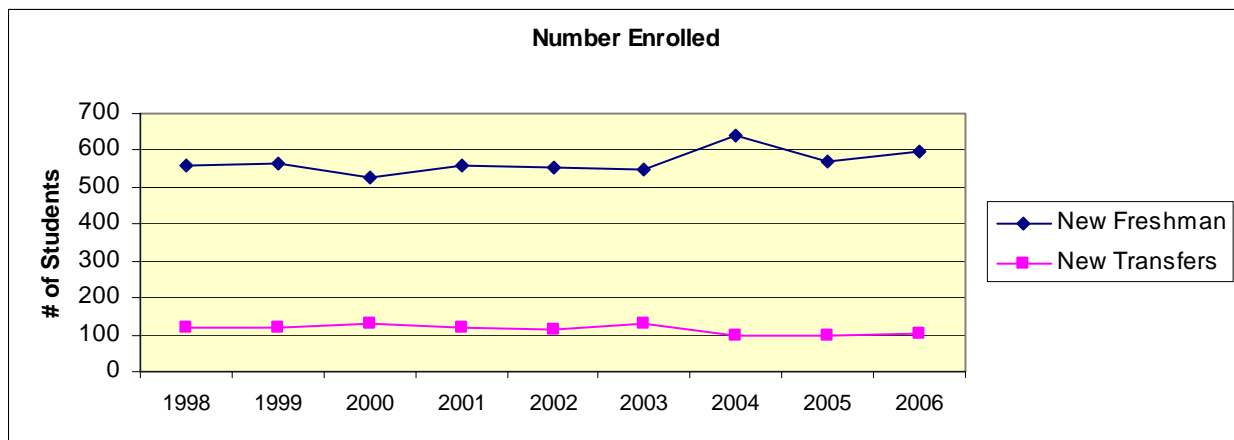
First-time Freshmen & Transfers

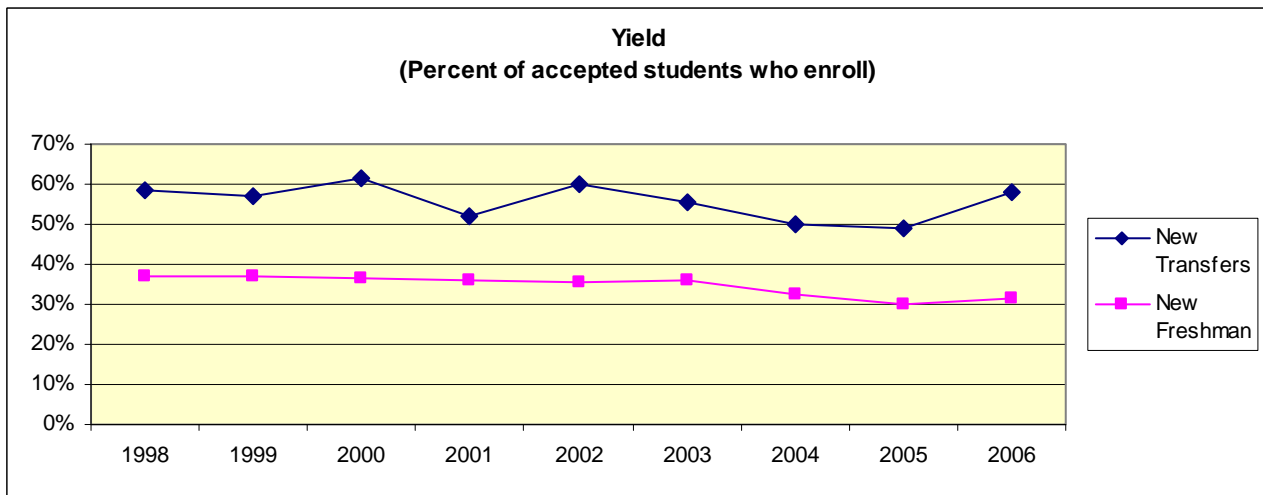
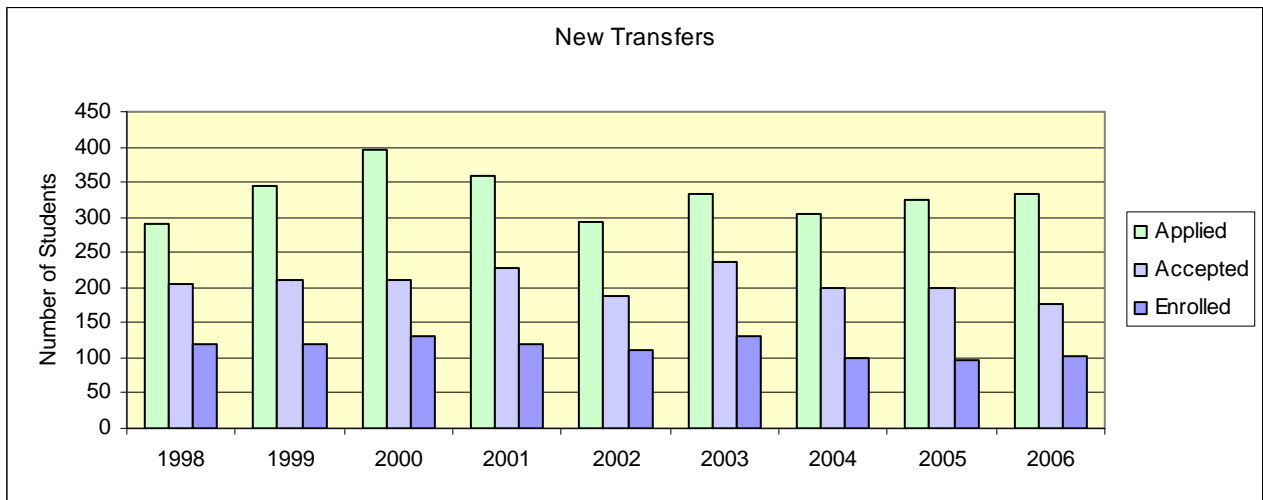
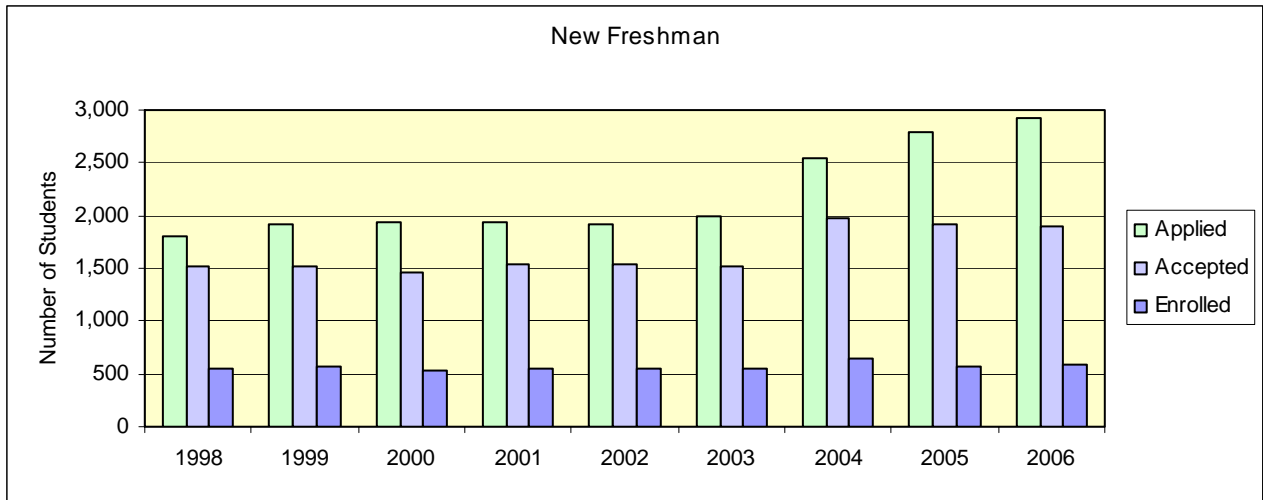
(Source: Admission's Office "Entering Class Profile")*

Freshman	1998	1999	2000	2001	2002	2003	2004	2005	2006
Inquired**	26,535	25,866	30,980	24,542	26,826	34,558	30,530	27,630	26,791
Applied	1,797	1,913	1,941	1,942	1,919	1,992	2,540	2,782	2,919
Accepted	1,521	1,523	1,456	1,545	1,542	1,527	1,980	1,918	1,896
Enrolled									
Men	237	228	252	244	222	244	262	246	240
Women	320	335	277	313	329	302	379	325	356
TOTAL	557	563	529	557	551	546	641	571	596
Yield rate for accepted students	36.6%	37.0%	36.3%	36.1%	35.7%	35.8%	32.4%	29.8%	31.4%
Transfers									
Inquired	1,782	1,696	1,771	1,815	1,929	1,421	1,024	1,029	674
Applied	290	344	397	359	293	334	306	325	334
Accepted	205	210	211	228	187	237	200	200	176
Enrolled									
Men	52	48	51	47	36	52	37	40	61
Women	68	72	79	72	76	79	63	58	41
TOTAL	120	120	130	119	112	131	100	98	102
Yield rate for accepted students	58.5%	57.1%	61.6%	52.2%	59.9%	55.3%	50.0%	49.0%	58.0%
Special	10	12	14	20	17	19	21	18	17
TOTAL	687	695	673	696	684	696	762	687	715

*This report is based upon the Admission's Office "Entering Class Profile" prepared in August for the first university faculty meeting each year. Final statistics for matriculating students are prepared by the Institutional Research Office in September for reporting purposes and may differ based on the criteria for determining "new" students and the time of the download.

** "Inquired" includes mailing lists purchased from College Board and other sources.

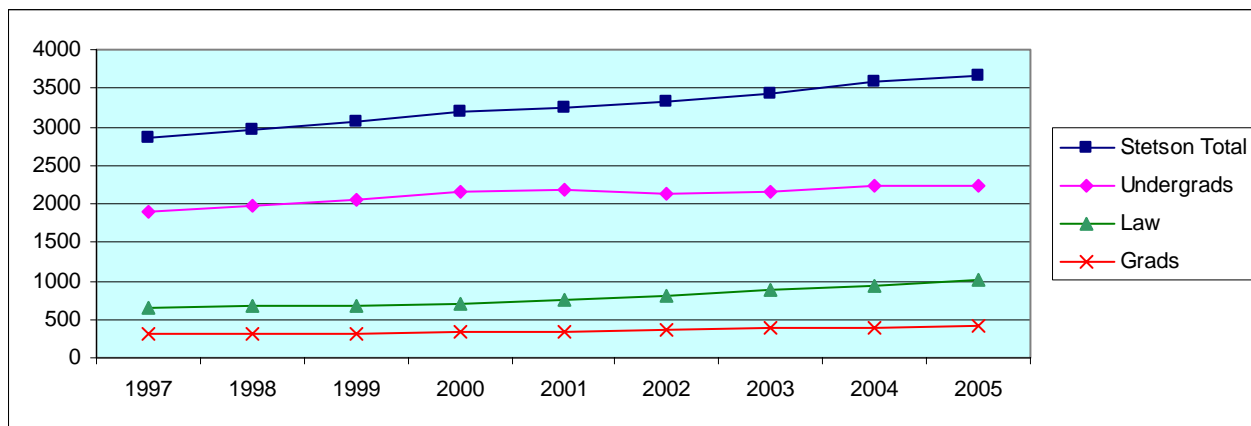




Enrollment

Headcount, Fall Semester (Historical)

	<u>1998</u>	<u>1999</u>	<u>2000</u>	<u>2001</u>	<u>2002</u>	<u>2003</u>	<u>2004</u>	<u>2005</u>	<u>2006</u>
<u>Full-time</u>									
Undergraduates	1913	1965	2064	2063	2063	2070	2163	2160	2185
Graduates	57	48	63	61	81	93	123	141	146
Post-Bacc	9	13	6	6	5	4	6	8	14
DeLand	1979	2026	2133	2130	2149	2167	2292	2309	2345
College of Law	668	658	680	727	711	736	784	825	853
University (Full-time)	2647	2684	2813	2857	2860	2903	3076	3134	3198
<u>Part-time</u>									
Undergraduates	74	97	91	111	79	91	67	74	88
Graduates	167	185	219	227	250	259	247	245	255
Post-Bacc	68	72	48	37	30	27	26	21	17
DeLand	309	354	358	375	359	377	340	340	360
College of Law	11	15	28	23	99	159	161	191	204
University (Part-time)	320	369	386	398	458	536	501	531	564
<u>Total</u>									
Undergraduates	1987	2062	2155	2174	2142	2161	2230	2234	2273
Graduates	224	233	282	288	331	352	370	386	401
Post-Bacc	77	85	54	43	35	31	32	29	31
Deland	2288	2380	2491	2505	2508	2544	2632	2649	2705
College of Law	679	673	708	750	810	895	945	1016	1057
TOTAL University	2967	3053	3199	3255	3318	3439	3577	3665	3762



Enrollment by Campus

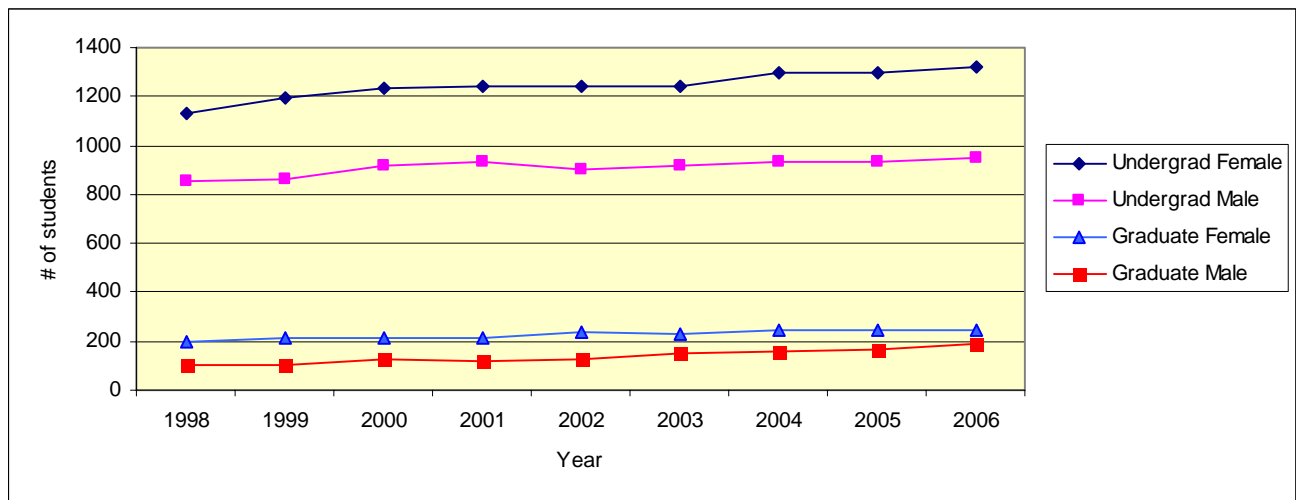
Undergraduates	Fall 2005		Fall 2006	
	FT	PT	FT	PT
DeLand	2150	71	2163	79
Celebration	<u>10</u>	<u>3</u>	<u>22</u>	<u>9</u>
Undergraduate Total	2160	74	2185	88

Graduates	Fall 2002		Fall 2003		Fall 2004		Fall 2005		Fall 2006	
	FT	PT	FT	PT	FT	PT	FT	PT	FT	PT
DeLand Graduates	57	148	65	116	87	132	74	141	73	150
DeLand P-Bacc	<u>3</u>	<u>29</u>	<u>4</u>	<u>25</u>	<u>6</u>	<u>26</u>	<u>3</u>	<u>18</u>	<u>12</u>	<u>15</u>
DeLand Total	60	177	69	141	93	158	77	159	85	165
Celebration Graduates	24	57	28	78	36	65	67	36	71	63
Celebration P-Bacc	<u>2</u>	<u>1</u>	<u>0</u>	<u>2</u>	<u>0</u>	<u>0</u>	<u>0</u>	<u>3</u>	<u>2</u>	<u>2</u>
Celebration Total	26	58	28	80	36	65	72	64	73	65
MBA/JD	<u>0</u>	<u>45</u>	<u>0</u>	<u>65</u>	<u>0</u>	<u>50</u>	<u>0</u>	<u>43</u>	<u>2</u>	<u>42</u>
Graduate Total	<u>86</u>	<u>280</u>	<u>97</u>	<u>286</u>	<u>129</u>	<u>273</u>	<u>149</u>	<u>266</u>	<u>160</u>	<u>272</u>

Enrollment by Gender (Historical)

		1998	1999	2000	2001	2002	2003	2004	2005	2006
Undergraduate	Male	852	864	921	931	900	920	930	937	949
	Female	1135	1198	1234	1243	1242	1241	1300	1297	1324
	Total	1987	2062	2155	2174	2142	2161	2230	2234	2273

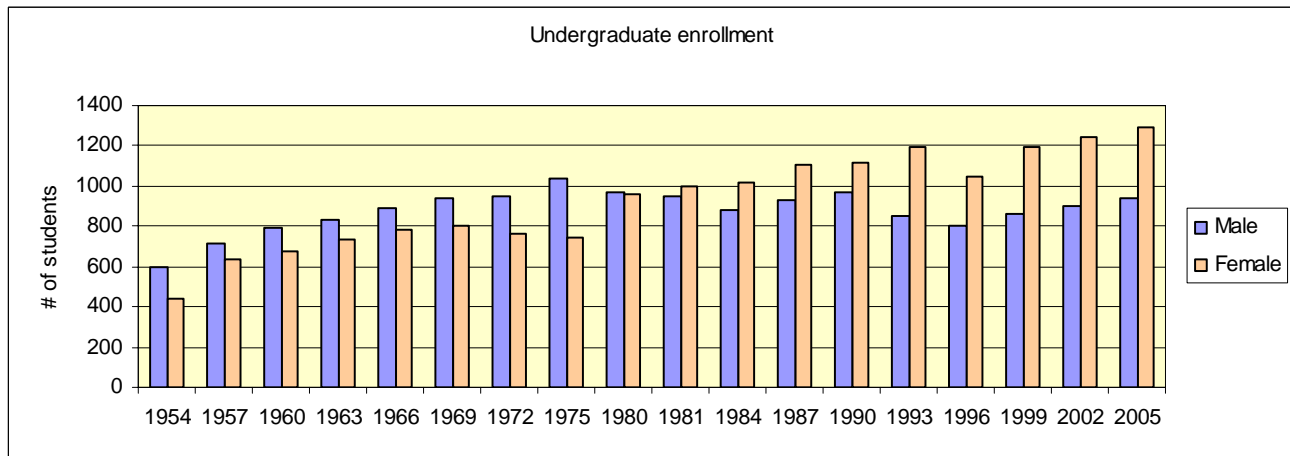
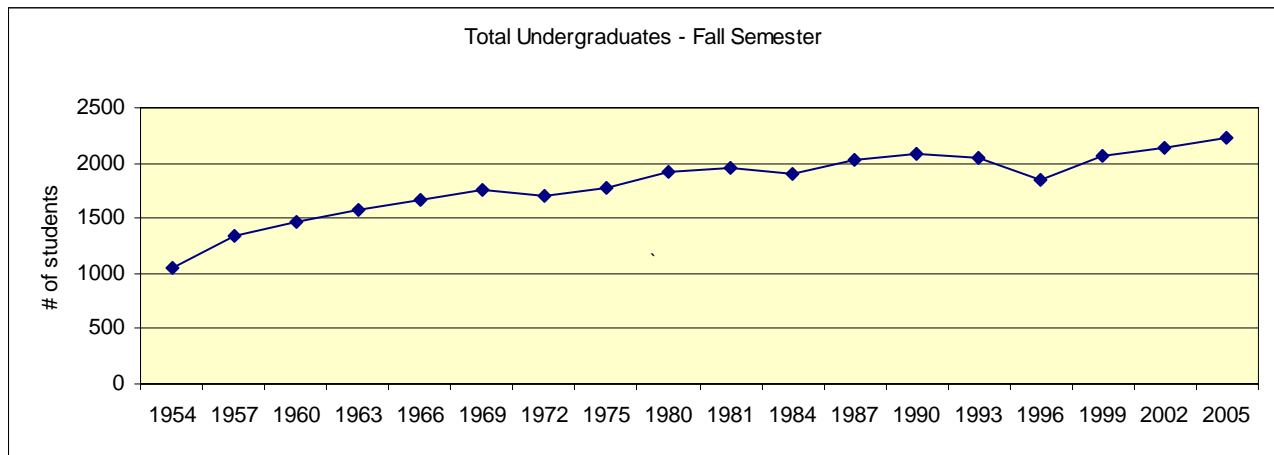
Graduate (excl Law)		1998	1999	2000	2001	2002	2003	2004	2005	2006
Male		102	101	124	118	125	151	159	168	188
Female		199	217	212	213	241	232	243	247	244
Total		301	318	336	331	366	383	402	415	432



Headcount, Fall Semester (Historical - 1954 to 2005)

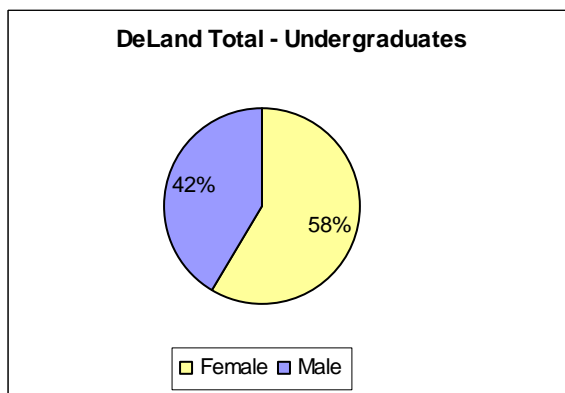
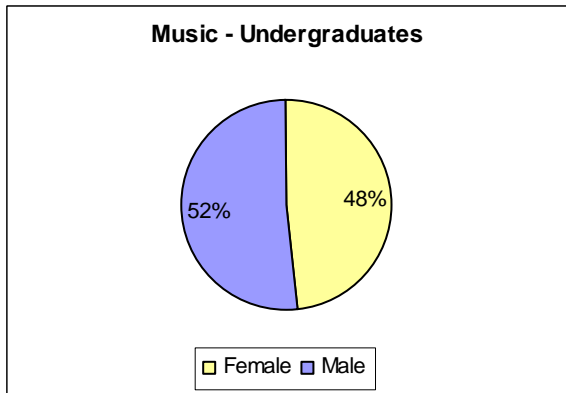
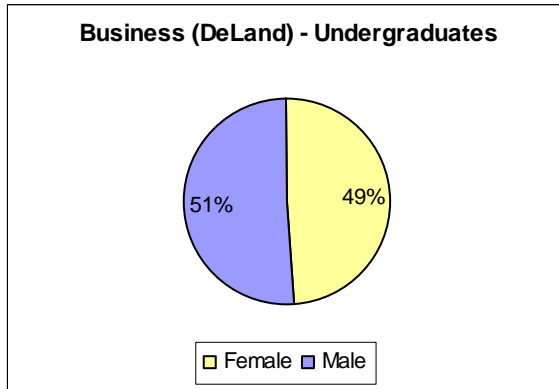
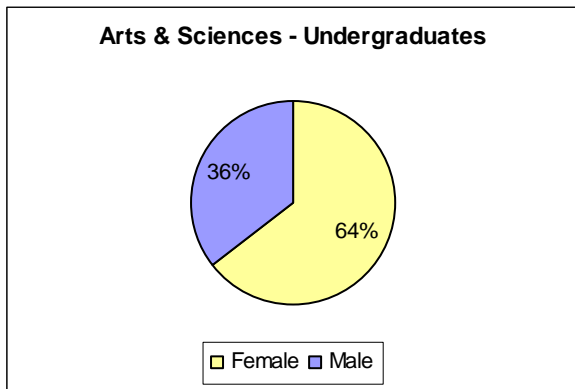
Undergraduate	Male		Female		TOTAL
	#	%	#	%	
Fall 1954	598	57%	444	43%	1042
Fall 1957	711	53%	634	47%	1345
Fall 1960	792	54%	676	46%	1468
Fall 1963	831	53%	737	47%	1568
Fall 1966	893	53%	782	47%	1675
Fall 1969	944	54%	806	46%	1750
Fall 1972	946	55%	763	45%	1709
Fall 1975	1035	58%	748	42%	1783
Fall 1980	972	50%	955	50%	1927
Fall 1981	954	49%	997	51%	1951
Fall 1984	882	46%	1021	54%	1903
Fall 1987	927	46%	1110	54%	2037
Fall 1990	973	47%	1118	53%	2091
Fall 1993	855	42%	1190	58%	2045
Fall 1996	804	43%	1047	57%	1851
Fall 1999	864	42%	1198	58%	2062
Fall 2002	900	42%	1242	58%	2142
Fall 2005	937	42%	1297	58%	2234

Source: HEGIS and IPEDS Enrollment Reports



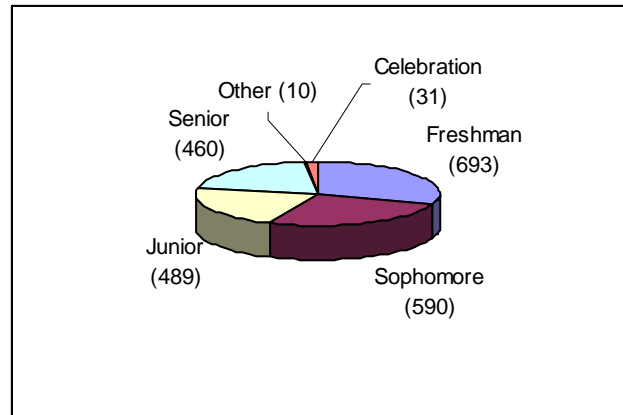
College or School & Gender (Fall 2006)

	Female	Male	Total
Arts & Sciences			
Undergraduate	880	487	1367
DeLand Graduate	106	28	134
Celebration Graduate	48	15	63
A & S Total	1034	530	1564
Business			
Undergraduate	327	342	669
Passport Undergrad	18	13	31
DeLand Graduate	44	72	116
Celebration Graduate	29	46	75
Law-MBA Graduate	17	27	44
Total	435	500	935
Music			
Undergraduate only	99	107	206
Law	562	495	1057
Stetson Total	2130	1632	3762



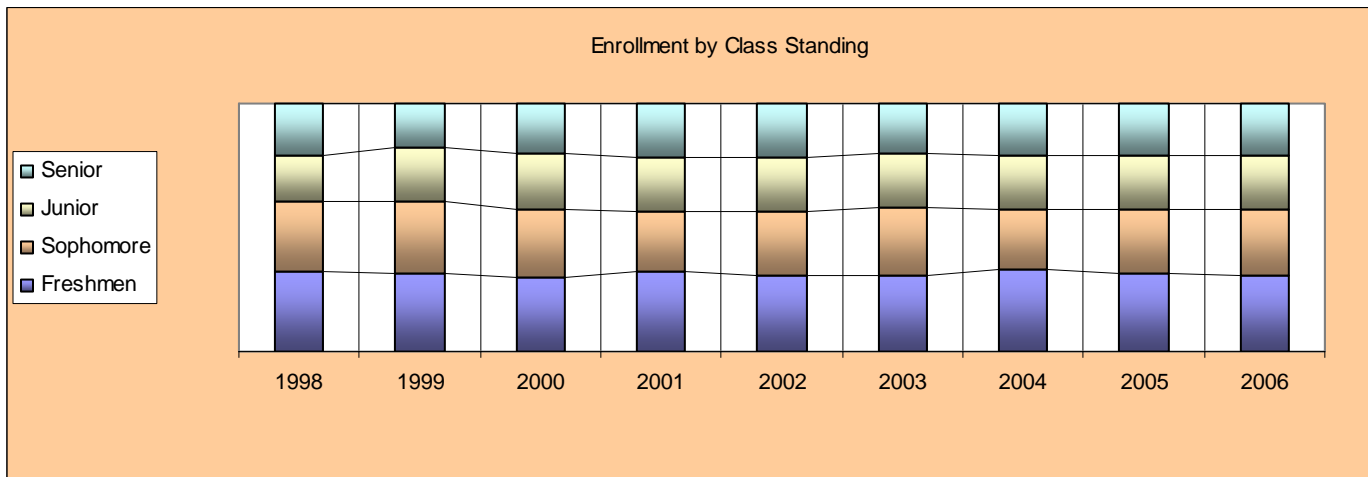
Class Standing* - Undergraduate (Fall 2006)

Headcount	Female	Male	Total
Freshmen	398	295	693
Sophomore	337	253	590
Junior	289	200	489
Senior	276	184	460
Other	6	4	10
Celebration	18	13	31
TOTAL	1324	949	2273



Class Standings - Undergraduate (Historical)

	1998	1999	2000	2001	2002	2003	2004	2005	2006
Freshmen	640	651	632	690	659	657	738	697	693
Sophomore	563	581	586	528	544	594	539	579	590
Junior	366	453	489	480	460	455	481	482	489
Senior	409	359	430	468	469	438	459	462	460
Other	9	18	18	8	10	17	13	14	10
Celebration									31



*Class Standing Definitions:

Freshmen	0 – 26 hours earned
Sophomore	27 – 59 hours earned
Junior	60 – 89 hours earned
Senior	90+ hours earned

Ethnicity (Fall 2006)

	Undergraduate		Graduate & Post Bacc		Law	
	#	%	#	%	#	%
African American	109	4.8%	20	4.6%	61	5.8%
Native American	10	.4%	0		6	.6%
Asian	38	1.7%	7	1.6%	27	2.6%
Hispanic / Latino	193	8.5%	33	7.6%	110	10.4%
White (US Resid)	1716	75.5%	334	77.3%	805	76.2%
Intl / Res. Alien	62	2.7%	21	4.9%	22	2.1%
Other / Unknown	145	6.4%	17	3.9%	26	2.5%

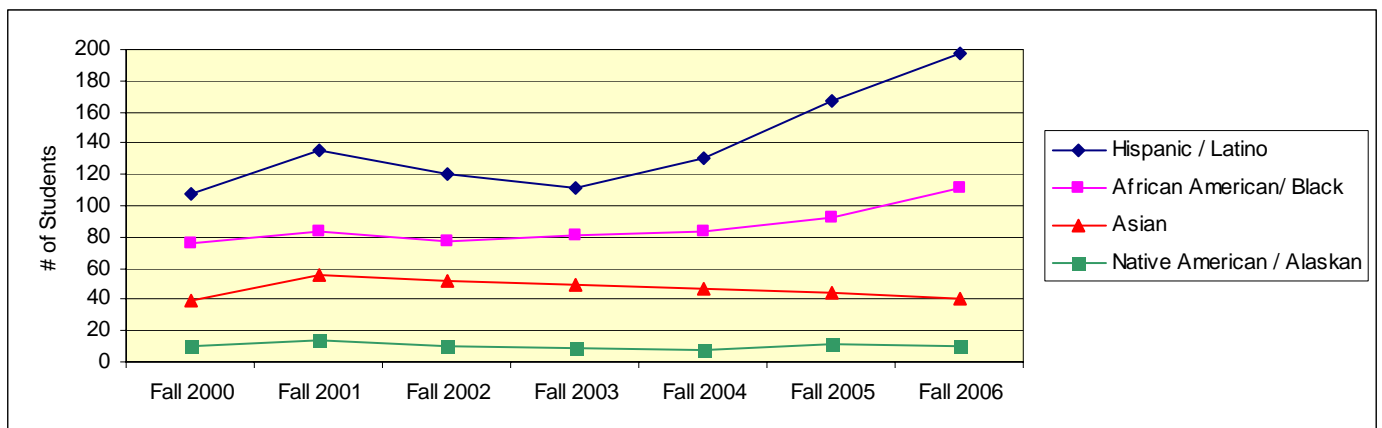
Enrollment By Ethnicity - Undergraduate (Historical)

	Fall 2000	Fall 2001	Fall 2002	Fall 2003	Fall 2004	Fall 2005	Fall 2006
African American	76	80	73	77	80	89	109
Native American	10	14	10	9	7	11	10
Asian	39	45	47	45	39	39	38
Hispanic / Latino	108	123	109	104	124	158	193
White (US Resid)	1766	1789	1766	1800	1802	1730	1716
Intl / Non-Res. Alien	156	87	71	74	79	81	62
Other / Unknown		36	66	52	99	126	145
Total	2155	2174	2142	2161	2230	2234	2273

ALANA Enrollment - Undergraduate (Historical)

(Ethnicity of all students, including non-residents, who do not consider themselves White/Caucasian)

	Fall 2000	Fall 2001	Fall 2002	Fall 2003	Fall 2004	Fall 2005	Fall 2006
Hispanic / Latino	108	135	120	111	130	167	198
African American / Black	76	83	77	81	84	92	112
Asian	39	56	52	49	47	44	41
Native American / Alaskan	10	14	10	9	7	11	10

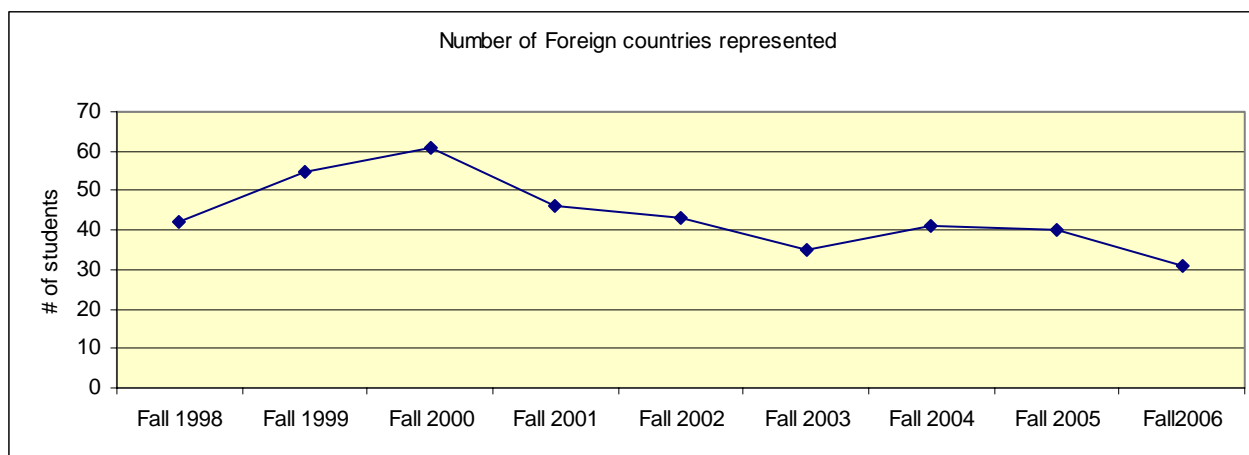


International / Non-Resident Students Home country - Undergraduate (Fall 2006)

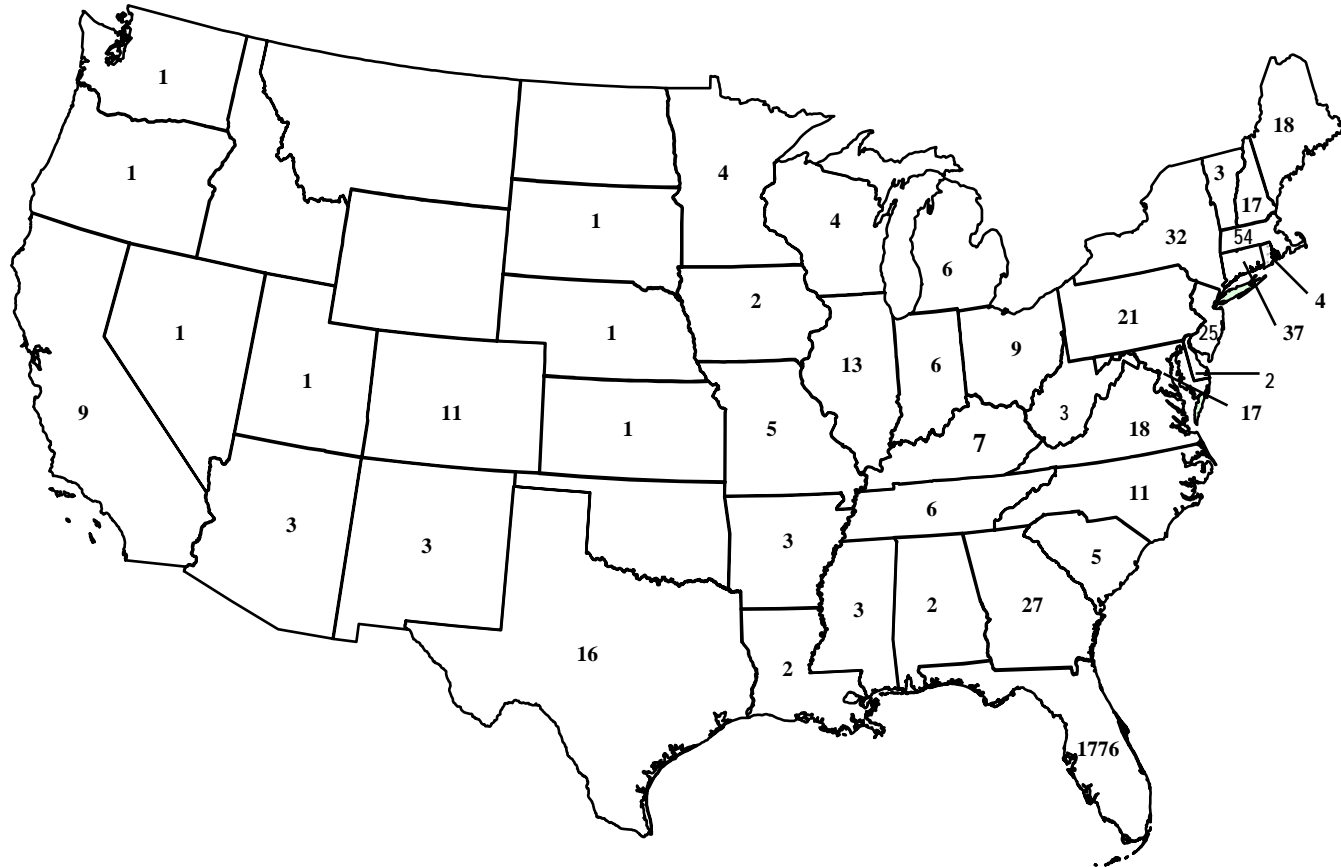
Jamaica	8	Bermuda	1	Peru	1
United Kingdom	8	Bulgaria	1	Serbia	1
Canada	7	Chile	1	Slovenia	1
Germany	4	Croatia	1	South Africa	1
Australia	2	England	1	Sri Lanka	1
Japan	2	France	1	Switzerland	1
Poland	2	Kenya	1	Tanzania	1
Spain	2	Morocco	1	Trinidad and Tobago	1
Venezuela	2	Netherland Antilles	1	Uruguay	1
Argentina	1	Nigeria	1		
Bahamas	1	Norway	1		

Number of Foreign Countries represented (Historical)

1998-99	1999-00	2000-01	2001-02	2002-03	2003-04	2004-05	2005-06	2006-07
42	55	61	46	43	35	41	40	31



Enrollment by Home State - Fall 2006 (Undergraduates)



Enrollment by Home State - Undergraduate (Historical)

	1998	1999	2000	2001	2002	2003	2004	2005	2006
Alabama	1	8	6	6	9	2			2
Alaska		1	1	1	1			1	1
Arizona			2	2	2	3	1	1	3
Arkansas	1	1	2	2	2	2	1		3
California	4	5	5	5	4	4	8	12	9
Colorado	5	3	2	1	4	6	12	11	11
Connecticut	21	26	27	24	33	24	29	31	37
Delaware						1	1	1	2
Florida	1510	1530	1606	1657	1594	1665	1705	1672	1776
Georgia	39	45	40	52	51	39	36	33	27
Hawaii									
Idaho				1	2				
Illinois	16	15	16	16	11	16	13	15	13
Indiana	7	7	7	6	9	3	3	5	6
Iowa	4	3	2		2			1	2
Kansas	2	3	3	5	6	3	1		1
Kentucky	7	11	5	4	6	5	6	10	7
Louisiana	3	3	4	2	4	3	3	1	2
Maine	5	6	3	2	9	9	11	9	18
Maryland	14	12	9	14	18	17	21	23	17
Massachusetts	33	34	33	45	44	41	52	53	54
Michigan	6	6	2	2	3	2	4	5	6
Minnesota	3	3	4	4	4	3	7	8	4
Mississippi	2	2	3	3	2	3	1	1	3
Missouri	9	10	11	9	8	6	9	7	5
Montana									
Nebraska					1		3	1	1
Nevada	2	2	1						1
New Hampshire	6	6	15	13	16	21	20	21	17
New Jersey	15	12	12	14	21	23	26	28	25
New Mexico	2	2	1	1	2	2	2	2	3
New York	47	45	41	47	47	30	36	41	32
North Carolina	11	9	12	10	11	6	7	11	11
North Dakota				1					
Ohio	12	13	11	14	14	11	10	12	9
Oklahoma	2	2	4	5	4	3	3	3	
Oregon	3	3	3	1	2	2	2	2	1
Pennsylvania	16	23	28	22	31	22	21	26	21
Rhode Island	5	3	4	4	8	7	6	3	4
South Carolina	10	12	11	12	13	15	12	12	5
South Dakota	1	1	1	1	1			1	1
Tennessee	10	9	9	11	14	18	16	12	6
Texas	15	13	17	16	17	11	16	17	16
Utah	1	1		3	3	2	2	1	1
Vermont	2	2	4	3	2	6	5	3	3
Virginia	3	7	14	17	19	14	16	19	18
Washington	1	1	1	1	2	1	2	1	1
West Virginia	1	1	1	2	1	2	2	2	3
Wisconsin	1	3	5	5	6	7	5	6	4
Wyoming							1		
Total	1858	1904	1988	2066	2063	2060	2137	2124	2192

Undergraduate Enrollment by Florida County (Historical)

	2002	2003	2004	2005	2006
Alachua	13	15	12	17	15
Bay	12	9	8	7	11
Bradford	0	0	2	0	0
Brevard	66	82	92	91	91
Broward	63	60	58	58	62
Charlotte	8	10	8	15	13
Citrus	9	10	12	9	10
Clay	9	7	13	13	15
Collier	28	38	41	34	37
Columbia	2	1	1	2	1
Dade	30	33	38	50	39
Desoto	0	1	2	3	5
Dixie	0	1	1	1	0
Duval	53	65	63	56	51
Escambia	10	10	8	7	3
Flagler	18	19	22	23	30
Gadsden	0	1	1	0	0
Gilchrist	0	0	0	0	0
Gulf	2	1	0	0	1
Hardee	1	1	2	1	0
Hendry	1	1	2	1	1
Hernando	9	12	12	11	13
Highlands	4	5	5	6	6
Hillsborough	37	35	27	33	38
Indian River	26	23	23	21	28
Jackson	1	0	1	1	1
Jefferson	0	0	0	0	0
Lafayette	1	0	1	1	1
Lake	38	40	43	38	51

	2002	2003	2004	2005	2006
Lee	51	48	43	51	44
Leon	13	11	9	14	16
Madison	1	2	2	1	3
Manatee	17	17	25	25	29
Marion	35	33	34	23	17
Martin	25	20	22	32	37
Monroe	7	10	8	9	11
Nassau	3	4	6	3	4
Okaloosa	12	11	11	14	11
Okeechobee	1	1	3	3	2
Orange	123	128	136	151	144
Osceola	11	12	17	22	35
Palm Beach	87	101	100	103	91
Pasco	15	16	16	18	19
Pinellas	72	61	54	59	60
Polk	44	37	33	33	32
Putnam	8	3	2	4	7
Santa Rosa	5	7	9	4	4
Sarasota	35	31	34	33	38
Seminole	103	118	121	103	125
St. Johns	18	25	30	19	30
St. Lucie	21	24	23	23	25
Sumter	1	0	1	1	3
Suwannee	1	1	1	0	1
Taylor	0	0	0	0	0
Union	0	0		1	1
Volusia	420	426	443	405	464
Wakulla	0	1	1	1	0

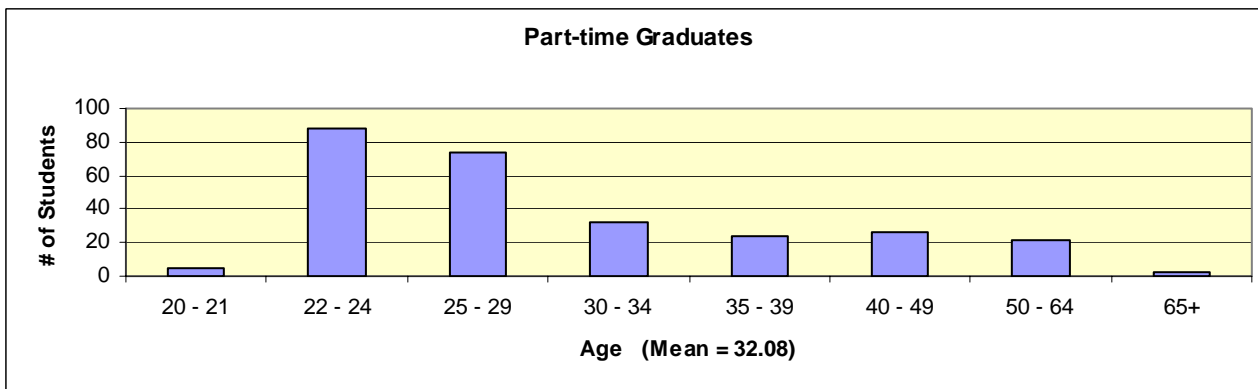
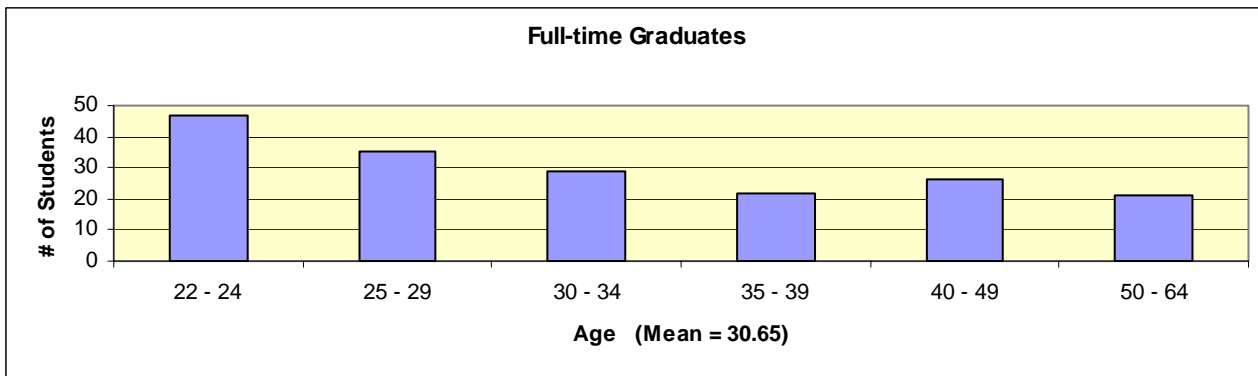
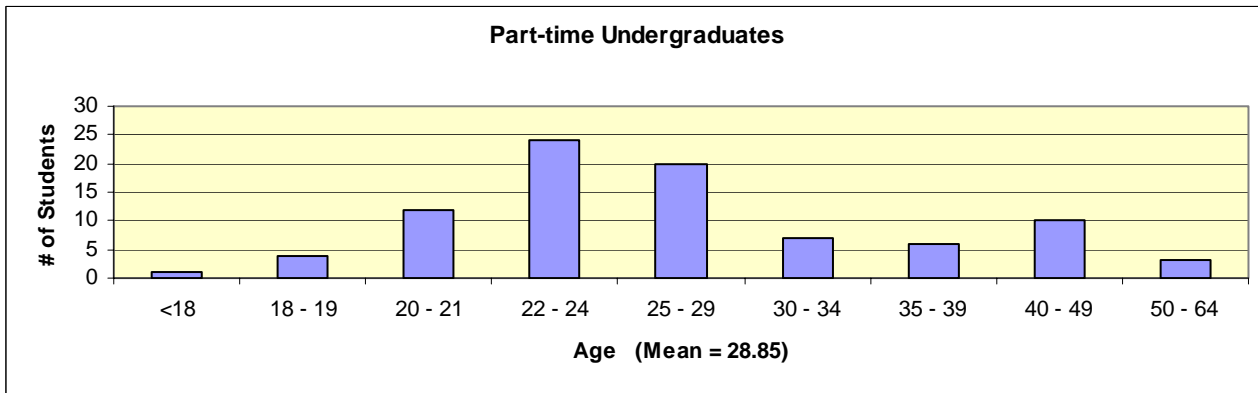
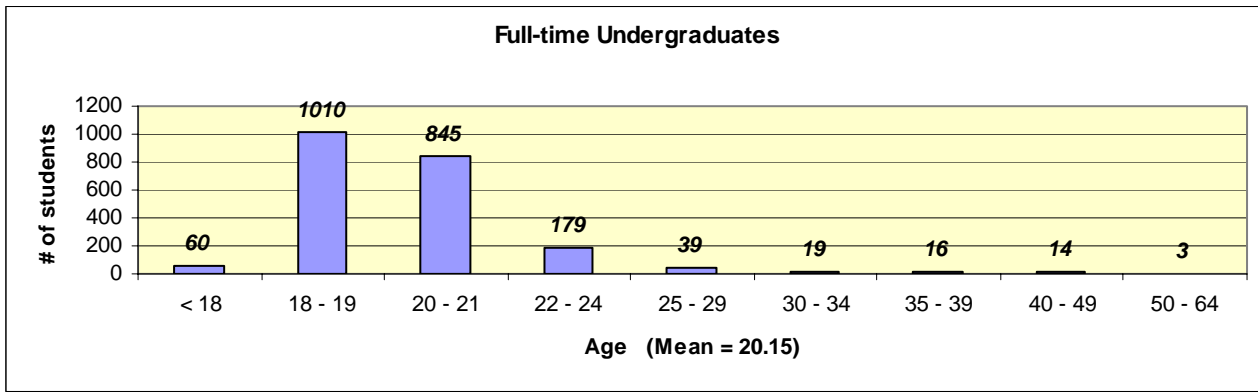
Enrollment by Religious Affiliation - Undergraduate (Fall 2006)

Anglican	4
Assembly of God	5
Baptist	136
Buddhism	2
Catholic	363
Christian Science	3
Church of Christ	14
Church of God	13
Church of the Brethren	2
Church of the Nazarene	1
Disciples of Christ	10

Eastern Religions, Other	5
Episcopal	32
Greek Orthodox	6
Hindu	2
Islam (Muslim/Moslem)	7
Jewish	32
Lutheran	52
Methodist	107
Mormon Latter Day Saints	9
Others	51
Pentacostal Holiness	12

Presbyterian	82
Protestant Christian	54
Reformed	1
Seventh Day Adventist	4
Unitarian	1
United Church of Christ	5
Non Denominational Christian	118
No preference	299
Unknown	841
TOTAL	2273

Age Distribution (Fall 2006)

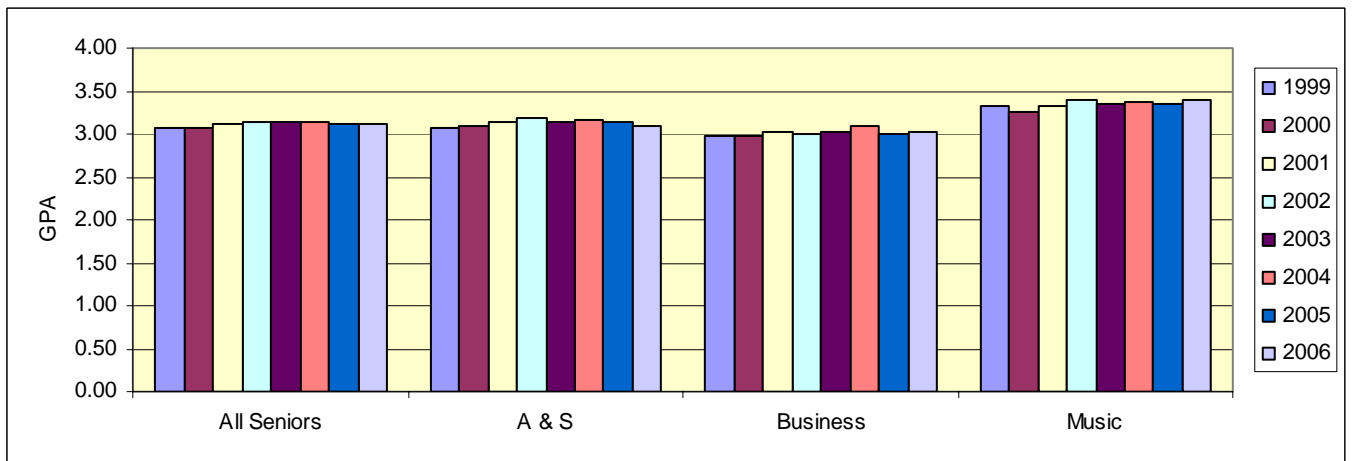
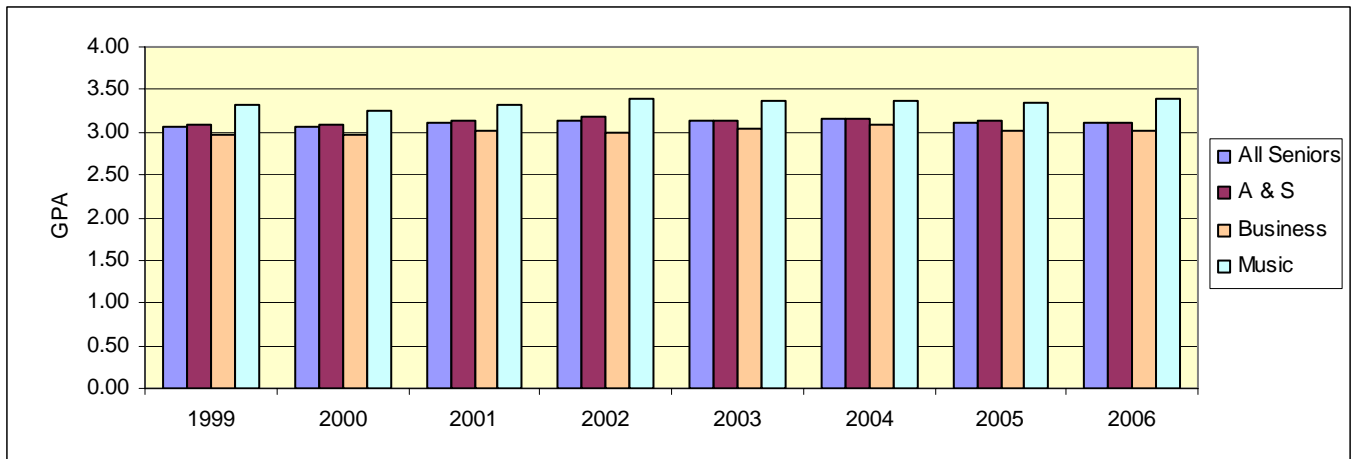


Average Senior cumulative GPA's (Historical)

(Spring Semester)	1999	2000	2001	2002	2003	2004	2005	2006
All Seniors	3.07	3.07	3.11	3.14	3.13	3.15	3.12	3.11
Arts & Sciences	3.08	3.09	3.13	3.18	3.13	3.16	3.14	3.10
Business	2.97	2.98	3.02	2.99	3.03	3.09	3.01	3.02
Music	3.33	3.26	3.33	3.39	3.36	3.37	3.35	3.40

Spring 2006

	All seniors	A & S	Business	Music
95th Percentile (Top 5%)	3.92	3.92	3.86	3.98
90th Percentile (Top 10%)	3.81	3.82	3.72	3.92
80th Percentile (Top 1/5)	3.61	3.60	3.50	3.78
75th Percentile (Top 1/4)	3.53	3.53	3.41	3.76
67th Percentile (Top 1/3)	3.37	3.41	3.30	3.65
60th Percentile (Top 40%)	3.29	3.26	3.17	3.55
50th Percentile (Top 1/2, median)	3.14	3.11	3.00	3.41
40th Percentile	2.99	2.98	2.86	3.33
25th Percentile	2.71	2.69	2.64	3.18



Class Statistics

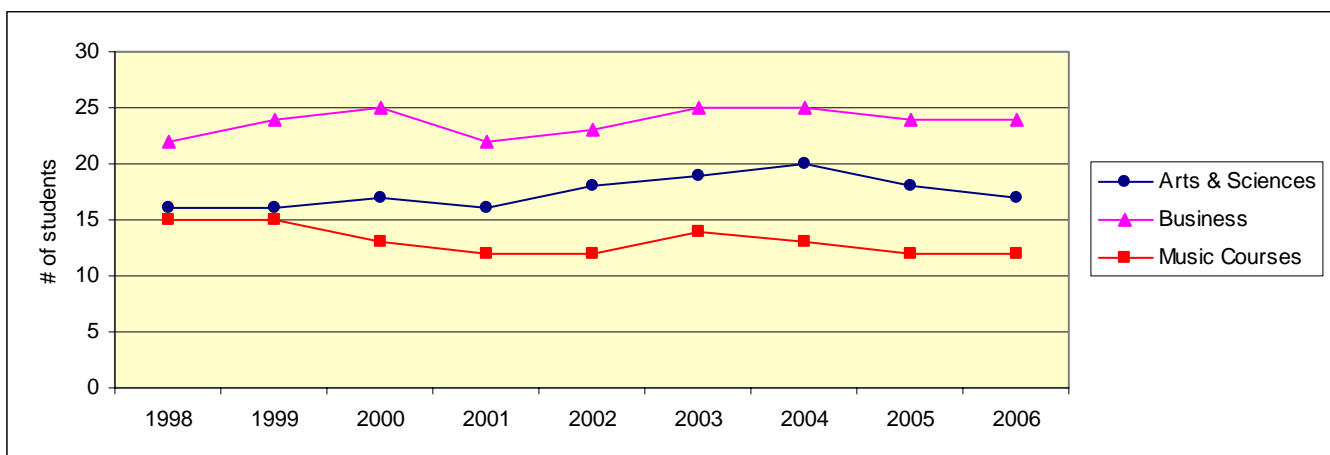
Average Class Size - Undergraduate (Fall 2006)

	Lower Level	Upper Level	Combined
Arts & Sciences	22	12	17
Education	22	9	12
Humanities	19	11	16
Natural Sciences	27	11	20
Social Sciences	25	16	21
Business	29	21	24
Music Courses	13	9	12
Music Ensembles	17	17	17
Applied Music	3	2	3

Independent Study is excluded from the above. The number of Independent Study sections across all schools = 63.

Average Class Size - Undergraduate (Historical)

	1998	1999	2000	2001	2002	2003	2004	2005	2006
Arts & Sciences	16	16	17	16	18	19	20	18	17
Education	14	12	14	13	12	15	13	12	12
Humanities	16	15	17	15	16	17	17	17	16
Natural Sciences	18	18	18	17	18	20	22	19	20
Social Sciences	18	17	21	19	22	22	24	23	21
Business	22	24	25	22	23	25	25	24	24
Music Courses	15	15	13	12	12	14	13	12	12
Music Ensembles	15	15	17	18	16	17	17	17	17
Applied Music	2	2	3	2	2	2	2	3	3



STUDENT LIFE

Athletics

Intercollegiate Athletics

Stetson is a member of the National Collegiate Athletic Association, and both men's and women's teams compete on a Division I level. Hatter basketball and baseball teams play national schedules and have achieved ranking as major powers.

Men's Teams

Baseball
Basketball
Crew
Cross Country
Golf
Soccer
Tennis

Women's Teams

Basketball
Crew
Cross Country
Golf
Soccer
Softball
Tennis
Volleyball

Intramural Program

The Intramural Program offers young men and women the opportunity to manage, officiate, direct and participate in physical activities with the conviction that this participation will promote stability, coordination, sportsmanship, and a sense of leadership which will touch all aspects of their lives. The following sports are available to both men and women:

Basketball
Bowling
Darts
Dodge Ball
Flag Football

Indoor Volleyball
Kickball
Outdoor Soccer
Sand Volleyball
Softball

Swimming
Table Tennis
Ultimate Frisbee
Water Polo (Inner tube)

Organizations and Clubs

Stetson has many organizations open to all students, affording a variety of activity. Membership in some organizations is based upon special interests or academic achievement; others are primarily social.

Social Organizations

Social Sororities

Alpha Chi Omega
Alpha Kappa Alpha
Alpha Xi Delta
Delta Delta Delta
Pi Beta Phi
Zeta Tau Alpha

Social Fraternities

Alpha Phi Alpha
Delta Sigma Phi
Lambda Chi Alpha
Phi Sigma Kappa
Pi Kappa Phi
Sigma Nu
Sigma Phi Epsilon

Honorary and Academic Organizations

Alpha Kappa Delta (Sociology)	Phi Alpha Delta (Pre-Law)
Alpha Kappa Psi	Phi Alpha Theta (History)
American Choral Directors Association	Philosophy
American Marketing Association	Phi Beta Kappa (General)
American Medical Student Association	Phi Eta Sigma
Association for Computing Machines	Phi Mu Alpha Sinfonia
Beta Alpha Psi	Phi Theta Kappa Alumni
Beta Beta Beta (Biology)	Pi Delta Phi (French)
Chi Sigma Iota (Counseling)	Pi Kappa Delta
Collegiate Music Educators Conference	Pi Kappa Lambda
Delta Phi Alpha (German)	Pi Sigma Alpha (Political Science)
Florida Future Educators of America	Psi Chi (Psychology)
Gamma Sigma Epsilon (Chemistry)	Rho Lambda
Gamma Theta Upsilon (Geology)	Sigma Alpha Iota
German Club	Sigma Delta Pi (Spanish)
Graduate Business Society	Sigma Pi Sigma (Physics)
Kappa Delta Pi	Society of Physics Students
Lambda Pi Eta	Stetson Russian Club
Mortar Board	Student Affiliates of the American Chemical Society
Omicron Delta Epsilon	Theta Alpha Kappa (Religious Studies)
Omicron Delta Kappa (Leadership)	Theta Alpha Phi (Theatre)
Order of Omega	

Religious Organizations

Baptist Collegiate Ministry	Jewish Student Organization
Canterbury House	Latter-Day Saint Student Association
Catholic Campus Ministry	Stetson Christian Fellowship
Chi Alpha Christian Fellowship	Wesley House
Fellowship of Christian Athletes	Young Life
Intervarsity Christian Fellowship	

Service Organizations

Best Buddies	Habitat for Humanity	Providing Animals with Service
C.A.U.S.E.	Into the Streets	Roots and Shoots
Circle K International		

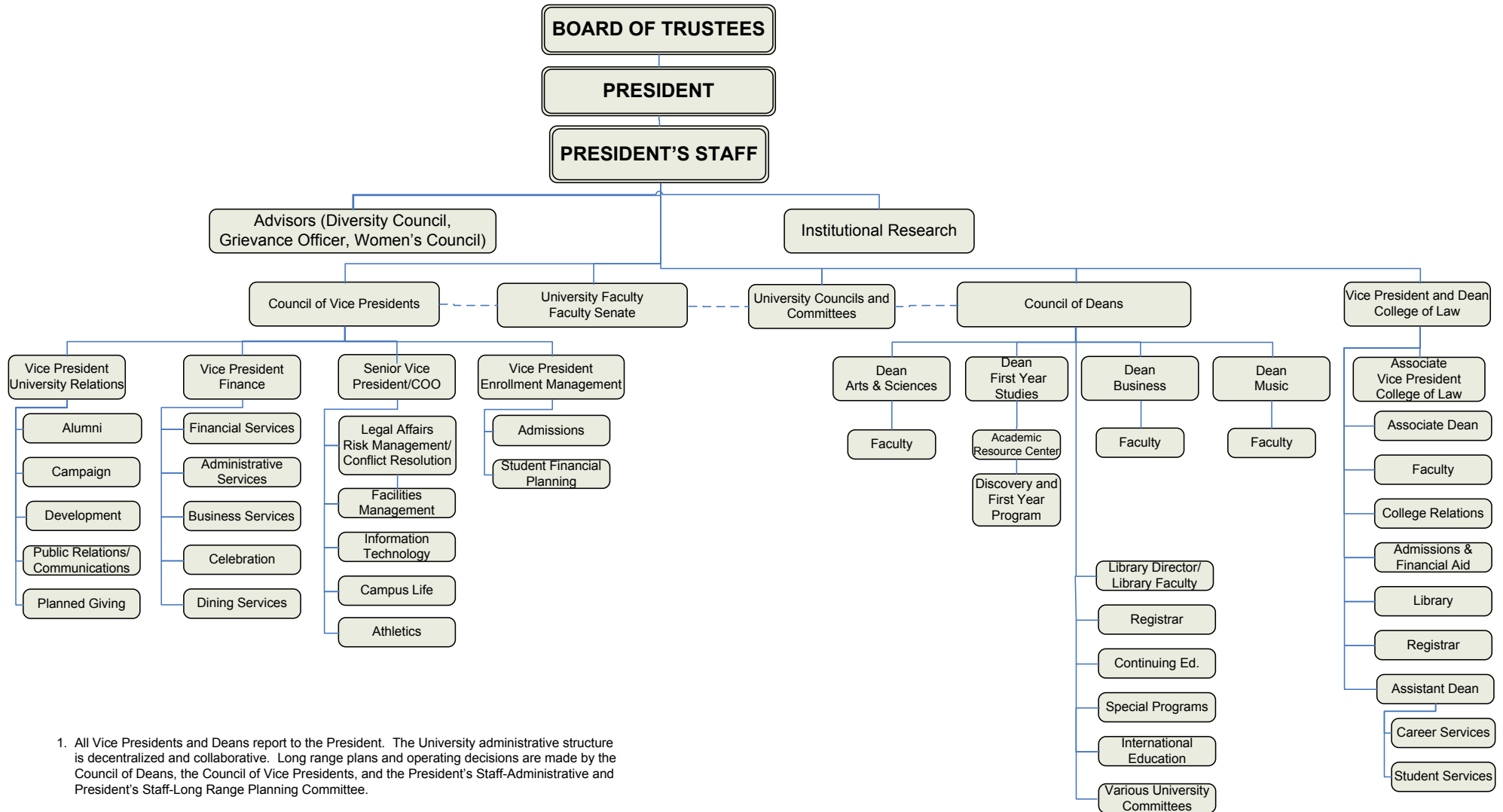
Campus Life Organizations

BAACHUS/GAMMA	Leadership Advisory Board (LAB)
Council for Student Activities (CSA)	Multicultural Student Council (MSC)
Family Weekend	Panhellenic Council (PH)
FOCUS	Student Government Association (SGA)
Greenfeather	The Reporter (Newspaper)
Interfraternity Council (IFC)	Touchstone Literary Magazine / Poetry
	At An Uncouth Hour

Special Interest Organizations

Aikido Club	Film Society	Numbered as Red (Art Club)
Asian Student Association	Green Hat Media	O.S.A.P.E.
Assoc. of Disability Advocates	Hip-Hop Hatter Dance Team	PARSEC (Astronomy Club)
Black Student Association	H.O.L.A. (Latin American)	QED Club
Caribbean Club	Honors Council	Rotaract Club
Chess Club	Impact	STAND Coalition - Students
Club Bridge	Indian Student Association	Taking Action Now: Darfur
College Bowl Team	International Organization	Stetson Gospel Choir
College Democrats	Kaleidoscope	Student Alumni Association
College Republicans	MedEx	Student Ambassadors
Crew Club	Model United Nations	Stetson Patriots Association
Dance Arts Society	Model US Senate	Ultimate Players Club
Dance Team	Muslim Student Association	WHAT Radio

STETSON UNIVERSITY ORGANIZATIONAL CHART 2006-07



1. All Vice Presidents and Deans report to the President. The University administrative structure is decentralized and collaborative. Long range plans and operating decisions are made by the Council of Deans, the Council of Vice Presidents, and the President's Staff-Administrative and President's Staff-Long Range Planning Committee.
2. The Senior Vice President and Chief Operating Officer represents the President in his absence and consults directly with all Vice Presidents and Deans as needed.
3. While the College of Law is an integral part of the University, its geographic location and status as a graduate professional school pragmatically make it a more autonomous unit within the University administrative structure.
4. The Director of Athletics makes regular reports to the President and President's Staff.

Faculty

Full-time Faculty - by Rank, Gender, Ethnicity

	NR/ Alien		Black, non-Hispanic		Asian / Pacific Islander		Hispanic		White, non-Hispanic		Other	Total
	Men	Wome	Men	Wome	Men	Wome	Men	Wome	Men	Wome	Men	

As of 10/1/97

Professors			1		1				38	6		46
Associate professors			1			1	2	2	32	25		63
Assistant professors				3	1	2			25	17		48
Instructors/Lecturers										1		1
TOTAL			2	3	2	3	2	2	95	49		158

As of 11/1/99

Professors			1				1		42	10		54
Associate professors			1	1		1		2	39	20		64
Assistant professors			1	3	1	1	1		13	20		40
Instructors/Lecturers								3	4	9		16
Other faculty			1						3	4		8
TOTAL			4	4	1	2	2	5	101	63		182

As of 11/1/01

Professors			1						47	12		60
Associate professors			1	3		2		2	35	18		61
Assistant professors		1	3	1	1		3		12	23		44
Instructors/Lecturers							1	3	7	12		23
Other faculty					1				5	2		8
TOTAL		1	5	4	2	2	4	5	106	67		196

As of 11/1/03

Professors			1						51	14		66
Associate professors			1	4		2	1	2	30	21		61
Assistant professors			2	1	2		1		18	19	1	44
Instructors/Lecturers								3	6	6		15
Other faculty	1				1				5	1		8
TOTAL	1		4	5	3	2	2	5	110	61	1	194

As of 11/1/05

Professors			1		1	1		1	51	15		7
Associate professors				4		1	1	1	27	24		58
Assistant professors	2	1	1	1			1		21	16	1	44
Instructors/Lecturers		1						2	5	11		19
TOTAL	2	2	2	5	1	2	2	4	104	66	1	191

Source: IPEDS Fall Staff Survey

Percent of Full-Time teaching Faculty with Terminal Degrees - Historical

(includes Sabbaticals/Leaves)

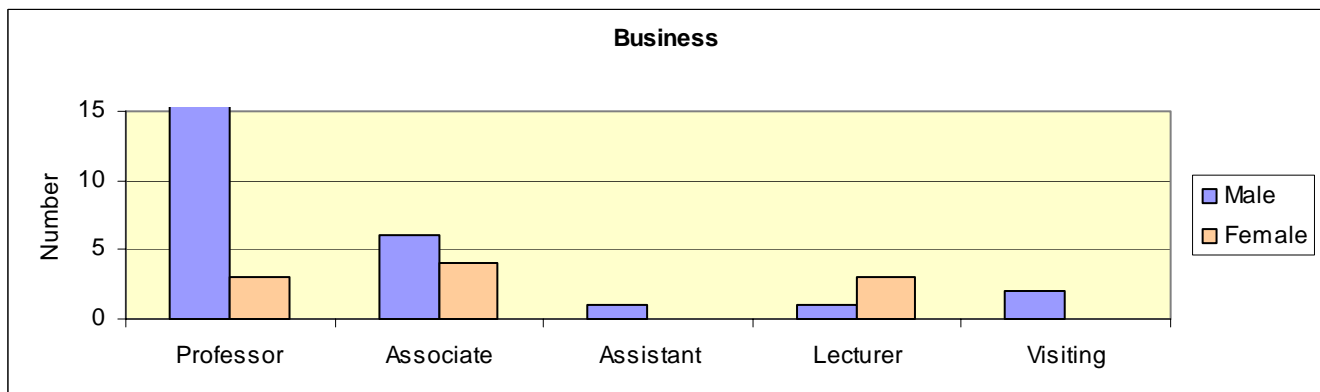
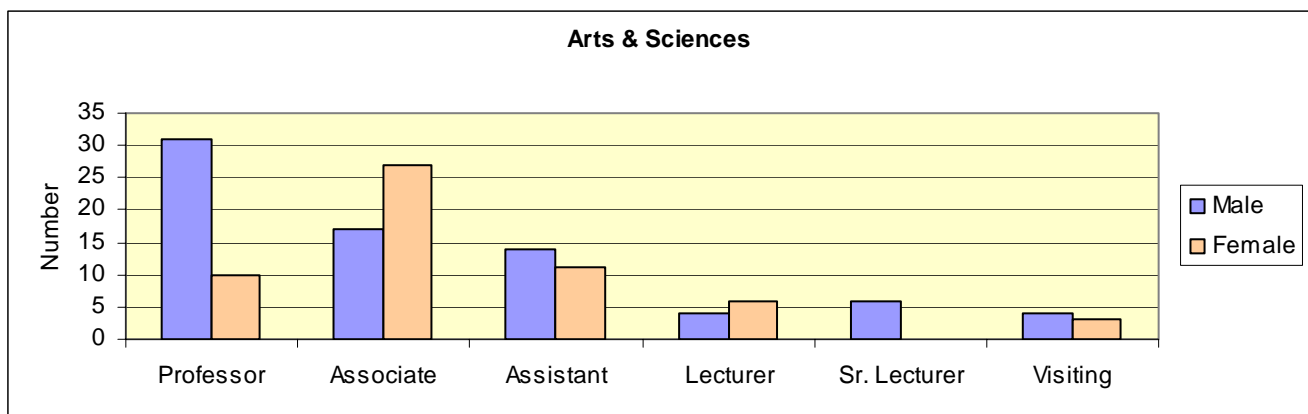
	1999	2000	2001	2002	2003	2004	2005	2006
Professors	100%	100%	100%	100%	100%	100%	100%	100%
Associate Professors	98%	98%	98%	97%	97%	96%	97%	94%
Assistant Professors	80%	83%	84%	84%	82%	81%	83%	93%
Instructors/Lecturers/Visiting	50%	51%	54%	45%	52%	48%	60%	62%
Senior Lecturer				100%	100%	100%	100%	100%
TOTAL	88%	87%	88%	88%	90%	89%	90%	92%

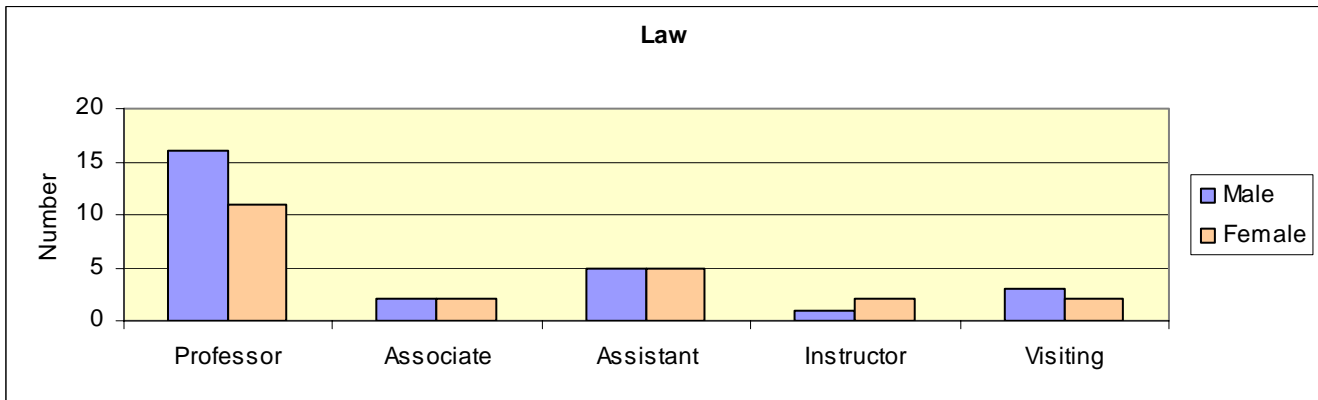
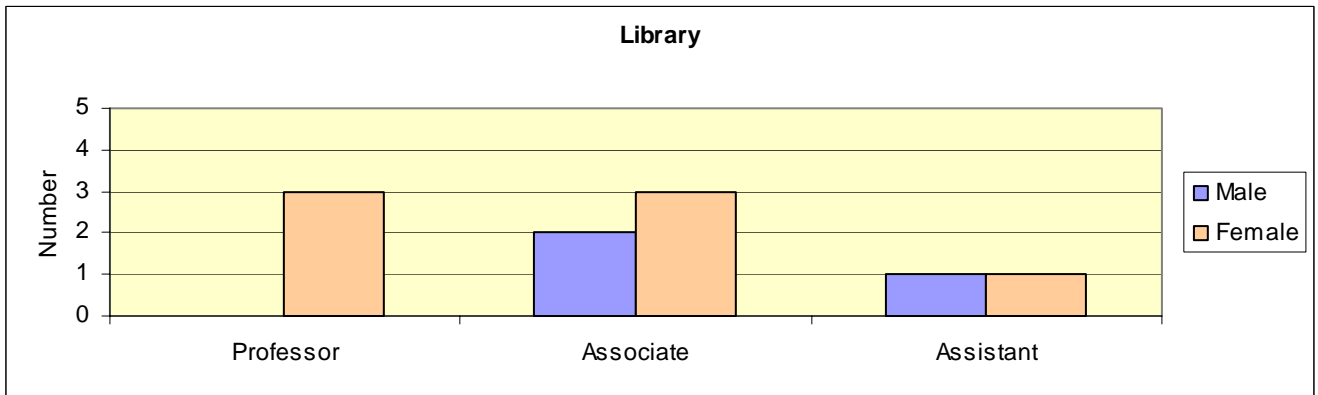
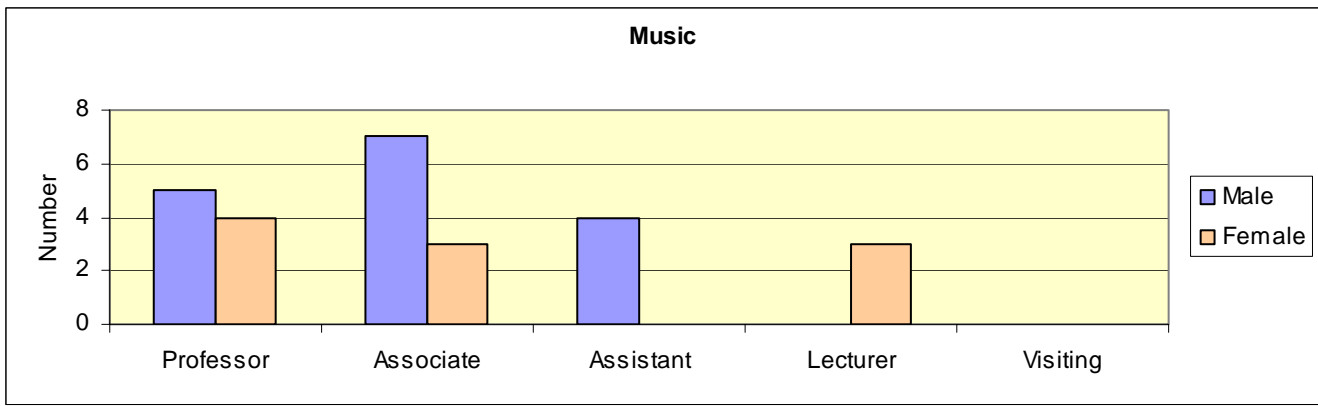
*Not available

Full-time Faculty By School and Gender (Fall 2006)

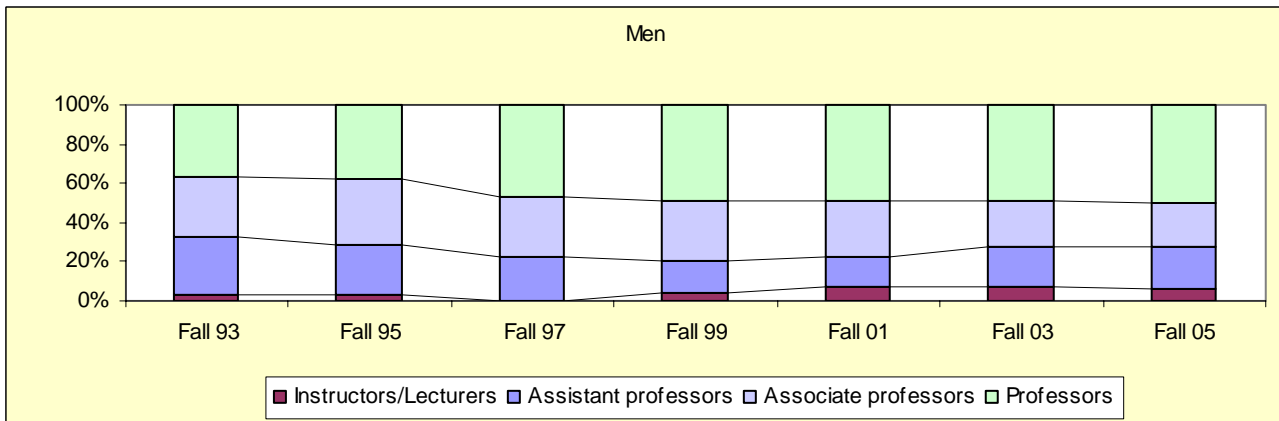
(includes Sabbaticals/Leaves)

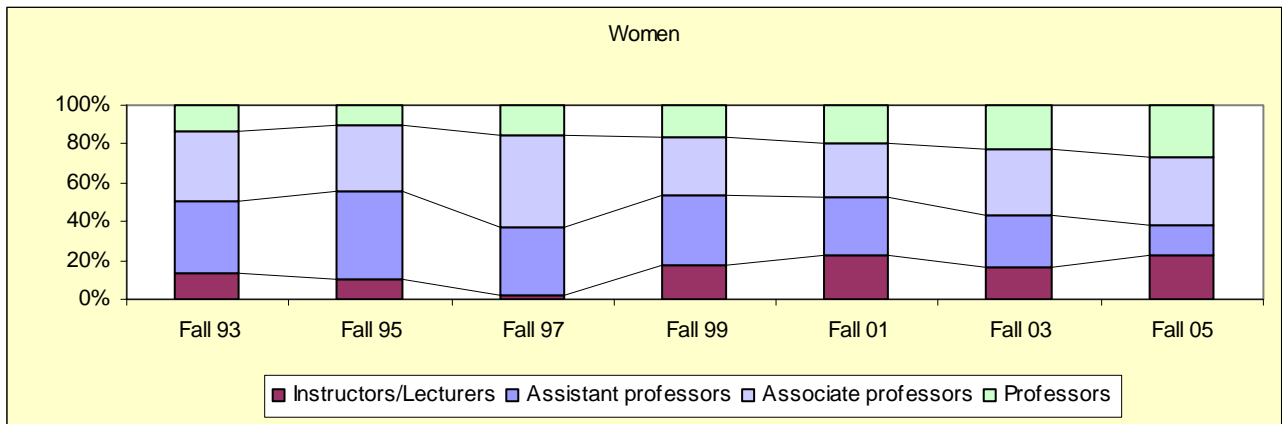
	Arts & Science		Business		Music		Library		Law	
	Male	Female	Male	Female	Male	Female	Male	Female	Male	Female
Professor	31	10	16	3	5	4	0	3	16	11
Associate	17	27	6	4	7	3	2	3	2	2
Assistant	14	11	1	0	4	0	1	1	5	5
Instructor									1	2
Lecturer	4	6	1	3	0	3				
Sr. Lecturer	6	0								
Visiting	4	3	2	0					43	2
TOTAL	76	57	26	10	16	10	3	7	27	22





Full-Time Instructional Faculty by Gender - Historical





Source: IPEDS Faculty Salary Survey

Student-Faculty Ratio

The table below shows the ratio of full-time equivalent undergraduate students to full-time equivalent instructional faculty for the fall semester.

Fall 1999	Fall 2000	Fall 2001	Fall 2002	Fall 2003	Fall 2004	Fall 2005	Fall 2006
10.5 to 1	10.4 to 1	10.3 to 1	10.7 to 1	11.1 to 1	11.7 to 1	11.7 to 1	11.3 to 1

*not available

Staff

(Including DeLand, Celebration and Law School)

	Fall 2003		Fall 2004		Fall 2005	
	Full-time	Part-time	Full-time	Part-time	Full-time	Part-time
Instruction	236	109	231	113	243	112
Executive	110	1	114	1	118	0
Other Professional	147	15	134	14	139	10
Technical, paraprofessional	10	0	5	1	6	1
Clerical and secretarial	112	7	139	16	141	18
Skilled crafts	10	0	5	0	4	0
Service/Maintenance	91	12	111	16	107	7
TOTAL	716	144	739	161	758	148
	861		900		906	

Source: IPEDS: EAP - Employees by Assigned position report or Staff Survey

Presidents of Stetson University

H. Douglas Lee	1987- Present
Pope A. Duncan	1977 – 1987
George R. Borders	(Acting) July, 1976 to July, 1977
John E. Johns	1969 – 1976 (Acting, June, 1969 to April, 1970)
Paul F. Geren	1967 – 1969
J. Ollie Edmunds	1948 – 1967
Harry C. Garwood (acting)	September to December, 1947
William Sims Allen	1934 – 1947
Charles S. Farriss (acting)	January to August, 1934
Lincoln Hulley	1904 – 1934
Charles S. Farriss (acting)	September 1903 to September 1904
Warren S. Gordis (acting)	September, 1895 to June, 1896
John F. Forbes	1885 – 1903

Board of Trustees (2006-2007)

Cynthia R. Brown Ormond Beach, Florida	Mark C. Hollis Lakeland, Florida
J. Hyatt Brown Ormond Beach, Florida	R. Dean Hollis Omaha, Nebraska
S. Sammy Cacciatore, Jr. Melbourne, Florida (Chair, Law Board)	Jill Jinks Atlanta, Georgia
Max Cleland Atlanta, Georgia	C. Paul Johnson Napa, California
Nelson Clemmens Goshen, Kentucky (Chair, Business Board)	Hal Kantor Orlando, Florida
Nestor De Armas Winter Park, Florida (Board Chair)	Diana Lee Kunze Brecksville, Ohio (Chair, Arts and Sciences Board)
Diane Disney State College, Pennsylvania	Joseph W. Landers, Jr. Tallahassee, Florida
Franklin T. Gaylord Eustis, Florida	L. Patrick Lane DeLand, Florida (Chair, Music Board)
Leo Govoni Clearwater, Florida	H. Douglas Lee DeLand, Florida
Dolly Hand Belle Glade, Florida	Carroll E. Lewis Ocala, Florida

Christine E. Lynn
Boca Raton, Florida

Billy Raley
Lake Mary, Florida

Richard A. McMahan
DeLand, Florida

Terry J. Rhodes
Tallahassee, Florida

Jane Edmunds Novak
Ponte Vedra Beach, Florida

David B. Rinker
West Palm Beach, Florida

Harlan Paul
DeLand, Florida

David M. Strickland
Jacksonville, Florida

Luis Prats
Tampa, Florida

Arthur P. Sullivan
Palm Beach, Florida

Officers, Trustee Emeriti

Mack N. Cleveland, Jr.
Sanford, Florida
(General Counsel Emeritus)

Thomas F. Wands
DeLand, Florida

Dennis C. McNamara, Sr.
Orlando, Florida

Patricia M. Wilson
Frostproof, Florida

Academic and Administrative Officers

H. Douglas Lee
President

Darby Dickerson
Vice President & Dean of the College of Law

James R. Beasley
Senior Vice President and Chief Operating Officer

Grady Ballenger
Dean of the College of Arts and Sciences

Linda P. Davis
Vice President for University Relations

Leonard L. Nance
Dean of First Year Studies

Sally Dowling
Vice President for Finance

James H. Scheiner
Dean of the School of Business Administration

Deborah Thompson
*Vice President for Enrollment Management and
Campus Life*

James E. Woodward
*Dean of the School of Music and
Chair of the Council of Deans*