

# INTRODUCTION

Dear Stetson Community:

Much of the planning and evaluation necessary to improve the effectiveness of the University begins with an understanding of basic institutional facts. The *Stetson University Fact Book* is prepared annually by the Institutional Research Office to provide a better understanding of a variety of issues at Stetson. By sharing and discussing this information, members of the Stetson community are able to more effectively contribute to the planning processes of the University. As you use this information, please let us know how future editions can be improved.

Dr. John M. Tichenor  
Director of Institutional Research

# GENERAL INFORMATION

## Statement of Institutional Purpose Approved by the Board of Trustees, February 4, 2000

### I. Educational Mission

Our mission at Stetson University is to provide an excellent education in a creative community where learning and values meet, and to foster in students the qualities of mind and heart that will prepare them to reach their full potential as informed citizens of local communities and the world.

At Stetson, the art of teaching is practiced through programs solidly grounded in a tradition of liberal learning that stimulates critical thinking, imaginative inquiry, creative expression, and lively intellectual debate. The art of learning is enhanced through small interactive classes, close student-faculty alliances, and collaborative approaches that provide the foundation for rewarding careers and advanced study in selective graduate and professional programs. We embrace diverse methodologies to foster effective communication, information and technological literacy, and aesthetic appreciation. We encourage the development of informed convictions, independent judgment, and lifelong commitments to learning that are characteristic features of the enlightened citizen. In bringing together learning and values, the University encourages all of its members to demonstrate personal integrity; to develop an appreciation for the spiritual dimension of life; to embrace leadership in an increasingly complex, interdependent, and technological world; and to commit to active forms of social responsibility.

### II. Values and Vision

From its founding, Stetson University has affirmed the importance of spiritual life and the quest for truth in its educational mission. The University motto, *Pro Deo et Veritate* (“For God and Truth”), is a symbol of this commitment, and it expresses our determination to integrate the pursuit of a liberal education with the search for meaning in our lives and in our communities.

Chartered as an independent and comprehensive university, Stetson has had an historical relationship with the Christian community and the Baptist denominations. That relationship has shaped our commitment to build an inclusive community. Today, the University includes persons from diverse religious, ethnic, cultural, economic, and intellectual backgrounds. It is thus from varying perspectives that members of the University community have joined together to affirm collectively

- the centrality of knowledge, examined ideas, and independent judgment in the life of an educated person;
- the inherent dignity, worth, and equality of all persons;
- the importance of community in human life;
- the role of religious and spiritual quests for meaning in human experience;
- the value of diverse persons and differing ideas in an educational community;
- the responsibility we share to work toward social justice;
- the necessity for decisions to be guided by ethics and social responsibility; and
- the obligation of individuals and communities to act as responsible stewards of the natural environment.

In our curriculum and co-curricular activities, then, we aim to infuse traditional liberal education with the values of religious and spiritual life, ethical decision-making, human diversity and commonality, gender equity, community service, and environmental responsibility. We aspire to develop distinctive, innovative, and interdisciplinary undergraduate and graduate programs that are centered on vigorous intellectual inquiry, informed by these values, increasingly global in perspective, and worthy of local and national recognition.

### **III. Heritage and Character**

Florida's first private university, Stetson University was founded in 1883 by Henry A. DeLand, a New York philanthropist, as DeLand Academy. In 1887, the Legislature of the State of Florida enacted the Charter of DeLand University as an independent institution of higher learning. The university's name was changed in 1889 to honor John B. Stetson, the nationally-known hat manufacturer who gave generously of his time and means to advance the quality and reputation of the institution, and who served, with Mr. DeLand and others, as a founding trustee of the University. The first charter stated that the objective of the University should be "to promote the general interests of education, and to qualify its students to engage in the learned professions or other employments of society, and to discharge honorably and usefully the various duties of life." Stetson's first president, Dr. John F. Forbes, clearly described the commitment to teaching that has been a hallmark of the University throughout its history:

Buildings, libraries and apparatus are good and give added power, but the vital contact of students with a vigorous and stimulating mind and heart--this is the sine qua non of a successful education...The most important thing is to find men and women of large heart and mind, apt to teach and full of enthusiasm and stimulating power...to develop in the student the habit of independent judgment--of investigating statements and principles for oneself, and thus for oneself discover their truth or falsity.

Today, Stetson University is a non-sectarian, comprehensive, private university composed of individually strong undergraduate programs in various colleges and schools, and a selected group of academically distinctive graduate, professional, and continuing education programs. We seek academically talented individuals with leadership potential and records of personal growth and community service. We promote and support scholarly and creative activity among students, faculty, and staff as a means to enhance learning, teaching, and professional development, and as a contribution to the broader base of knowledge.

## Accreditation

- ◆ Accredited by the Commission on Colleges of the Southern Association of Colleges and Schools (1866 Southern Lane, Decatur, Georgia 30033-4097, Telephone (404) 679-4501) to award the Bachelor's, Master's and Specialist in Education degrees in the College of Arts and Sciences; Bachelor's degrees in the School of Music; Bachelor's and Master's degrees in the School of Business Administration; and the Juris Doctor and the Master of Laws degree in the College of Law.
- ◆ AACSB International – The Association to Advance Collegiate Schools of Business
- ◆ American Bar Association
- ◆ American Chemical Society
- ◆ Council for Accreditation of Counseling and Related Educational Programs
- ◆ National Association of Schools of Music
- ◆ National Council for Accreditation of Teacher Education

## Historical Timeline

- 1883 Henry A. DeLand founds the DeLand Academy, November 5, originally housed in the First Baptist Church.
- 1884 DeLand Hall is completed, the first building in Florida to be continuously used for higher education.
- 1885 The institution becomes DeLand College, and John Franklin Forbes is named the first president. An affiliation with the Florida Baptist Convention is achieved.
- 1886 Stetson Hall (oldest residence hall in Florida) is occupied.
- 1887 The Florida legislature grants the charter to DeLand University defining a self-perpetuating Board of Trustees to be three-fourths Baptists with the president also to be a Baptist.
- 1889 The name is changed to John B. Stetson University, and Mr. Stetson becomes chairman of the Board of Trustees.
- 1892 Elizabeth Hall is built by Mr. Stetson--the north and south wings are completed in 1897.
- 1898 The *Florida Times Union* calls Presentation Day, February 10, "the most memorable day in...higher education" in Florida. President William R. Harper of the University of Chicago addresses the gathering leading to an affiliation (May 17) with Chicago until 1908. The University receives the wings of Elizabeth Hall, the Monroe Health Museum, and \$100,000 endowment Forbes has collected. This latter makes the University no longer dependent upon the largess of any one person.
- 1900 College of Law is founded as first law school in Florida.
- 1902 Flagler Hall becomes home of Law and Technology.
- 1904 The colorful Lincoln Hulley becomes president.

- 1907 Efforts by Baptists to change charter fail; Florida Baptist Convention founds Columbia College.
- 1908 Sampson Hall is constructed as the University's library.
- 1919 With the closing of Columbia College, a new agreement, the "Hulley-Rogers Agreement," is made with the Florida Baptist Convention giving it a voice in choosing trustees.
- 1932 Stetson joins Southern Association of Colleges and Schools. Hulley resists this action believing Stetson does not need this endorsement.
- 1934 President Hulley dies, January 20. Charles S. Farriss is named acting president. In August, William Sims Allen becomes the third president of Stetson.
- 1938 Most remembered football game, Stetson beats Florida, 16-14.
- 1943 Low point of enrollment during World War II, 362. With war's end, enrollment booms to 2,554 in 1947.
- 1947 President Allen's poor health causes him to resign in September; Dean Harry Garwood is named acting president.
- 1948 J. Ollie Edmunds assumes presidency, January 1, welcomed by William Hugh McEniry, Acting Dean, and Fred (Bud) Dickinson, President of Student Association.
- 1954 The beautiful Commons Building burns at Christmas. Carlton Union Building succeeds it (1957). College of Law moves to St. Petersburg.
- 1960 Stetson becomes first white college in Florida to admit a black student, Cornelius Hunter.
- 1963 Ford Foundation challenge grant of \$1,500,000 is largest single grant to that date. Matching funds are secured.
- 1964 The duPont-Ball Library is dedicated.
- 1967 President Edmunds resigns and Paul F. Geren becomes president.
- 1969 President Geren resigns; the day before his resignation is to take effect, he is killed in an automobile accident.
- 1970 Vice President John Johns, after serving as acting president, following President Geren's death, becomes the sixth president.
- 1974 Edmunds Center is built as a field house and multi-purpose assembly hall.
- 1976 President Johns goes to Furman University as president, and George Borders becomes acting chief administrator.
- 1977 Pope A. Duncan becomes Stetson's seventh president.
- 1978 A program of renovation of older buildings is inaugurated. Acquisition of Gillespie Museum property begins a series of real estate purchases to redefine the south boundary of the campus. Position of provost is established.
- 1979 Ten-year \$50 million campaign begins. The university's first \$1 million gift is committed by Kenneth Kirchman, trustee alumnus. The campaign is successfully concluded in five years, 1984.

- 1982- 83 Centennial of the University is celebrated with year-long activities. Gilbert Lycan's *Stetson University: The First 100 Years* is published. Phi Beta Kappa, Gamma of Florida, is installed as first chapter in a private university in Florida. Roland George Investments Program is begun. In 1989 the Roland and Sarah George Institute for Applied Investments is funded by a bequest in the will of Sarah George.
- 1984 Chancellor J. Ollie Edmunds dies. Master of Accountancy added. College of Liberal Arts becomes College of Arts & Sciences. School of Music adds Bachelor's degree in Musical Theatre.
- 1985 Stetson joins Trans America Athletic Conference and is a founding member of the women's New South Conference. The John T. Rosa bequest funds purchase of apartments at the College of Law. New Community School of the Arts is inaugurated.
- 1986 A master campus plan is developed.
- 1987 H. Douglas Lee, Executive Vice President, succeeds President Duncan as president and Duncan becomes Chancellor. The sorority houses are dedicated. A \$200 million fund campaign is approved. Hollis Leadership Development Program is funded. Major renovations begin at the College of Law.
- 1989 Griffith Hall, which houses admissions and financial aid, is completed. A master campus landscaping plan which begins the reforestation of Woodland Boulevard is approved.
- 1990 Law School team wins A.B.A. National Mock Trial Competition for second year in a row. The Lynn Center is purchased with a gift of \$3 million from E. M. Lynn, an alumnus. For the sixth year *U.S. News and World Report* ranks Stetson among the best comprehensive universities in the South. A new agreement is made with the Florida Baptist Convention reducing its role in Trustee nominations and reducing its financial support but continuing an affiliation.
- 1991 South African Archbishop Desmond Tutu, winner of the 1984 Nobel Peace prize, speaks out on global conflicts as the inaugural speaker of the James A. Stewart Lecture Series presented by Stetson's Institute for Christian Ethics. William M. and Nina B. Hollis Foundation Inc., makes a gift of \$4.5 million, \$4 million of which establishes a scholarship fund.
- 1992-93 In collaboration with Disney Development Company and the Osceola County School Board, Stetson plans a model school and teaching academy at Celebration. Former President Jimmy Carter gives the Stewart Lecture.
- 1993-94 The \$200 Million Campaign passes the \$106 million mark. A revised charter and by-laws reaffirm Stetson's identity as an independent institution. Baptist funding drops to \$17,000.
- 1994-95 Trustee Mark Hollis and his wife, Lynn, provide \$2.5 million toward the construction of a student activities center. The first School of Music Gala fills the 2,500-plus-seat Peabody Auditorium in Daytona Beach.
- 1995-96 In a message titled "On the Threshold of the 21st Century," Holocaust survivor, Nobel Peace Prize laureate and author Elie Wiesel presents the James A. Stewart Lecture. The College of Law is ranked first in the nation for its trial and appellate programs in the 1995 *U.S. News and World Report's* survey of graduate school programs. Stetson and the Florida Baptists terminate all formal and informal relationships. The endowment climbs to over \$80 million. In a formal inaugural ceremony, the Howard Thurman Program is established to integrate the works of scholars and community leaders to seek solutions to social, religious and ethnic problems.

- 1997-98 Named for Mark and Lynn Hollis of Lakeland, the \$4.3 million, 33,000-square-foot Hollis Center for fitness and recreation is dedicated.
- 1998-99 Celebrated author and observer of the national scene with more than 30 years in print and broadcast journalism, Bill Moyers delivers the 1998 James A. Stewart Lecture, addressing the topic "Ethics for a New Millennium." Six task forces are established within the university's newly formed Values Council as a means to develop strategic plans for implementing Stetson's commitment to its core values. The council's activities and plans underscore the university's mission to be an inclusive community, recognizing the dignity, worth and equality of all people. The Stetson College of Law opens a \$8.5 million Law Library and Legal Information Center that is one of the most technologically-advanced facilities of its kind in the Southeast, housing a 370,000-volume library collection and hundreds of network connections to access online legal resources.
- 1999 The opening of Melching Field at Conrad Park – a \$4.5 million state-of-the-art baseball stadium funded through a collaboration with Stetson, the City of DeLand and the DeLand Sports Redevelopment Association. Final phase of the \$200 Million Campaign, the largest fund-raising effort in Stetson's history, begins during Stetson Weekend. The \$5.3 million expansion and renovation of the duPont-Ball Library is completed and dedicated. First annual Undergraduate Scholarship and Performance Day showcases students' academic achievements in a campus-wide celebration open to the public.
- 2000 Author of the bestseller, *Reason for Hope: A Spiritual Journey*, and world-renowned primatologist Jane Goodall delivers the James A. Stewart Lecture. Christine Lynn of Boca Raton donates \$10 million for extensive renovations to the Eugene M. and Christine Lynn Business Center, which houses the School of Business Administration. Construction begins on the permanent home for the Stetson University Center at Celebration. Stetson acquires \$2.6 million Oscar Bluemner art collection.
- 2001 The \$200 Million Campaign concludes with a victory celebration during Stetson Weekend in January. The original goal of \$200 million was surpassed, with the campaign raising \$235,584,479. Stetson's third campus, the \$7.2 million Stetson University Center at Celebration, opens its doors to students for the fall semester. Construction of the first phase of a \$2 million Amelia Avenue safety and beautification streetscape project is complete -- adding gates, brick pavers and landscaping to the roadway that borders the university.
- 2002 Historic Holler Fountain is brought back to life and beautifies the DeLand campus again with light and spray displays. The Roland George Investments Program team defends its national title at the student portfolio management competition. Stetson breaks ground for a women's fastpitch softball complex. A \$12 million renovation of the Lynn Business Center is complete and the facility opens in the fall -- featuring technology-advanced classrooms and labs in a state-of-the-art facility. The Stetson College of Law opens a new student life center that houses offices for career services, student life and student organizations, as well as a lounge, fitness center and swimming pool. The law school also launches a part-time law program and breaks ground for a law center and campus in Tampa.

- 2003 Trustees approve a new landscaping policy, to plant only trees and shrubs native to Florida. The Lynn Business Center is the first building in Florida certified as a green building by the U.S. Green Building Council under its Leadership in Energy and Environmental Design (LEED) Green Building Rating System™. Our environmental efforts win recognition from the Council for Sustainable Florida, which gives Stetson one of only 16 “2003 Sustainable Florida Awards.” An Executive Master of Business Administration (EMBA) degree program for senior-level executives begins at the Stetson University Center at Celebration. A gift of \$1 million from Martha Apgar honoring the late Rev. LeRoy Lawson makes possible the Lawson Lecture Series, the Lawson Endowed Scholarship for students in Philosophy, and the Lawson Seminar and Reading Room in Elizabeth Hall.
- 2004 The College of Law opens its Tampa Law Center, a three-story, 73,500-square-foot building offering evening courses for Juris Doctor students and housing the Tampa branch of Florida’s Second District Court of Appeal. Stetson welcomes its largest-ever incoming class and its largest overall student body in the fall semester. Three hurricanes cross West Volusia closing Stetson for 9 class days and causing an estimated \$400,000 in damages. A new Health and Wellness Task Force joins the six other Values Council task forces. A new Family Business major, the first in the nation, strives to give students interested in family businesses credibility and marketability.
- 2005 Dr. Leonard Nance is named Dean of First Year Studies, inaugurating a program designed to improve first year students’ college experience at Stetson. The School of Business Administration begins a new Executive Passport program to help working adults with 40 to 60 hours of college credit earn a bachelor's degree in Business Administration in Saturday classes at the Celebration campus. Hulley Tower, which housed the Eloise Chimes, is taken down to its stone base when it is found that years of water damage have made it an unsafe structure. Construction begins on six new student residence buildings; one is a traditional residence hall, the other five offer apartment living. Stover Theatre celebrates its 75th anniversary as a performance hall, and the Theater Program at Stetson marks its 100th season of presenting plays.



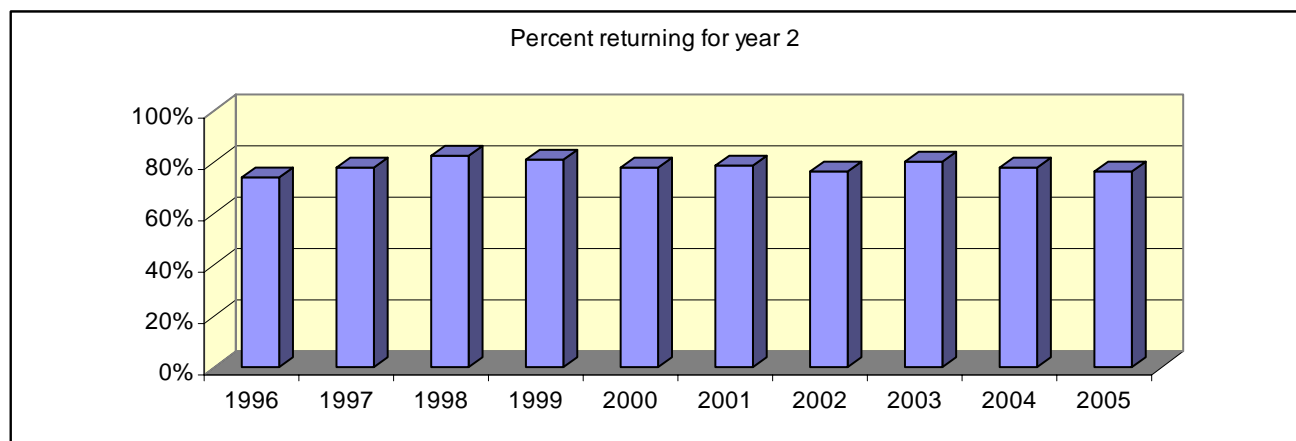
## KEY INDICATORS

### Student Retention Analysis

In the Fall of 2004, Stetson enrolled 600 new, first-time-in-college students and 95 new transfer students. Seventy-seven percent of the new, first-time-in-college students re-enrolled for classes in the Fall of 2005 and 79% of the transfer students re-enrolled. The tables and graphs on this page describe longitudinal retention rates and characteristics of returners & non-returners.

#### Percent of New (first-time-in-college) Students Returning for Second Year

1996	1997	1998	1999	2000	2001	2002	2003	2004	2005
74%	78%	83%	81%	78%	79%	77%	81%	78%	77%



#### Characteristics of Returning Students

		% of New Freshman Fall '04 Returning in Fall 2005			% of New Transfers Fall '04 Returning in Fall 2005		
		Initial cohort	# returning	%	Initial cohort	# returning	%
<b>TOTAL</b>		600	459	76.5%	95	75	78.9%
<b>Gender</b>	Female	356	277	77.8%	57	42	73.7%
	Male	244	182	74.6%	38	33	86.8%
<b>Race</b>	International	17	14	82.4%	3	3	100.0%
	African American	17	16	94.1%	5	2	40.0%
	Latino/a	1	1	100.0%	0	0	-
	Asian American	9	8	88.9%	1	0	0.0%
	Native American	43	34	79.1%	6	6	100.0%
	White	475	358	75.4%	71	58	81.7%
	Unknown, Other	38	28	73.7%	9	6	66.7%
<b>School</b>	Arts & Sciences	410	302	73.7%	64	49	76.6%
	Business	141	117	83.0%	19	17	89.5%
	Music	49	40	81.6%	12	9	75.0%

## Retention Analysis, continued

### Cumulative GPA (end of Spring 2005) of Fall 2004 new students

	Returners			Non-Returners		
	Mean	Median	Std. Dev.	Mean	Median	Std. Dev.
New Freshman	2.91	2.96	.6878	2.12	2.13	.9747
New Transfers	2.99	3.05	.6299	2.26	2.26	.9844

### Average SAT of Fall 2004 new students

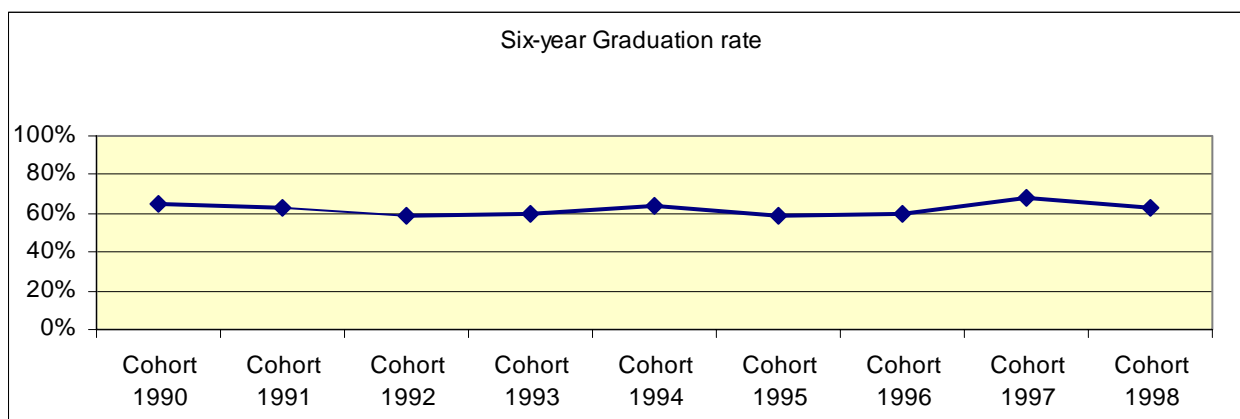
	Returners			Non-Returners		
	Mean	Median	Std. Dev.	Mean	Median	Std. Dev.
New Freshman	1150	1140	128.388	1109	1090	125.254
New Transfers	1047	1040	165.991	1044	1055	190.183

### Average HS GPA of Fall 2004 new students

	Returners			Non-Returners		
	Mean	Median	Std. Dev.	Mean	Median	Std. Dev.
New Freshman	3.75	3.75	.5752	3.48	3.50	.4205
New Transfers	3.41	3.31	.7349	3.02	3.05	.6713

## Graduation Rates

	New Freshmen	4-year	5-year	6-year
Cohort: 1988	548	47%	59%	62%
Cohort: 1989	492	53%	64%	66%
Cohort: 1990	408	55%	64%	65%
Cohort: 1991	460	52%	62%	63%
Cohort: 1992	501	46%	57%	59%
Cohort: 1993	483	49%	58%	60%
Cohort: 1994	474	54%	62%	64%
Cohort: 1995	464	49%	57%	59%
Cohort: 1996	416	51%	60%	60%
Cohort: 1997	504	56%	66%	68%
Cohort: 1998	539	52%	62%	63%



## Senior Survey Statistics - Postgraduate Plans

The following statistics are from the HEDS Spring 2005 Senior Survey of 357 May 2005 graduates; 270 surveys were returned for a response rate of 75.6%

### Primary Activity After Graduation

	<b>Percent</b>
Employment Full-Time	55.7%
Employment Part-Time	3.9%
Grad School Full-Time	31.0%
Grad School Part-Time	.4%
Additional U-grad coursework	1.6%
Military Service	.4%
Volunteer Activity	.8%
Traveling	2.0%
Undecided	3.5%
Other Activity	.8%

### Degree Desired

	<b>Fall 2005 plans</b>	<b>Future plans*</b>
Master's A & S – M.A./M.S.	28.6%	32.1%
Master's Business – M.B.A.	15.3%	29.6%
Other Professional Master's Degree	6.1%	3.8%
Law Degree	17.3%	5.7%
Medical Degree	10.2%	6.9%
Ph.D.	5.1%	22.0%
Other Doctoral		5.7%
Other Degree	17.3%	11.9%

\*Multiple Responses Allowed

## Spring 2005 Senior Survey Results, continued

### Subject Area of Planned Degree

	Fall 2005	Future		Fall 2005	Future
Law	19.8%	6.8%	Physics	2.1%	
Medicine	10.4%	5.4%	Engineering		.7%
Architecture		.7%	Anthropology		.7%
Business	22.9%	32.0%	Economics		1.4%
Communications, Media	2.1%	5.4%	Political Science/Govt.	3.1%	2.7%
Education	5.2%	12.2%	Psychology	4.2%	6.1%
Health Related Field	5.2%	4.8%	Sociology	2.1%	2.7%
Social Work		.7%	English		5.4%
Theology	3.1%	4.1%	Fine/Performing Arts	8.3%	9.5%
Biological/Life Sciences	6.3%	4.1%	Foreign Languages	4.2%	3.4%
Chemistry	1.0%	.7%	History		3.4%
Earth Science		1.4%	Humanities		2.7%

### Long Term Career Plans

Accounting	3.0%	Law	6.8%
Advertising, Public Relations	3.0%	Library or Information Science	.9%
Architecture, Design, or Planning	.9%	Management	3.4%
Arts/Entertainment	6.8%	Marketing, Sales	3.8%
Biology/Life Science	2.1%	Mathematics, Statistics	.4%
Broadcasting, Media Productions	.4%	Medical Doctor	4.3%
Business Owner, Entrepreneur	10.6%	Medicine, Health Care, Other	6.4%
College/Univ Administration	1.3%	Military Science	.9%
College/Univ Teaching or Research	9.4%	Physical Science	.4%
Education, Teaching/Admin	7.2%	Publishing, Print Journalism	.4%
Engineering	.4%	Religious Ministry or Service	1.7%
Finance	4.3%	Social Science or Services	2.6%
Foreign Service, Diplomacy	1.7%	Sports, Recreation	1.7%
Government, Politics, Public Policy	2.6%	Other	4.7%
Homemaker	1.7%	Undecided	5.1%
Hospitality, Travel/Tourism	1.3%		

## Results from Alumni/ae Surveys

The HEDS *Alumni/ae Survey* conducted by the Institutional Research Office approximately every two years offers insights into a variety of issues, including the outcomes of our general education program. The following tables present results from three cohorts of Stetson graduates (1991, 1993 and 1996) as well as graduates from comparison institutions. The abilities/types of knowledge (e.g., write effectively, communicate well orally, etc.) are examined from two perspectives: 1) “How important are the abilities/type of knowledge in current personal and professional activities?” and 2) “How did the undergraduate experience enhance the abilities/type of knowledge?”

	<b><i>Greatly Important</i></b> in current personal and professional activities					
<i>Abilities/type of knowledge developed in Bachelor Program</i>	Stetson Grads			Comparison Grads		
	1993	1996	1998	1993	1996	1998
Acquire new skills / knowledge on my own	74%	85%	84%	72%	83%	82%
Think analytically and logically	73%	81%	83%	75%	84%	85%
Formulate creative/original ideas & solutions	61%	64%	69%	62%	65%	67%
Academic ability		44%	51%		44%	45%
Write effectively	67%	61%	72%	72%	65%	66%
Use quantitative tools (e.g., statistics, graphs)	21%	38%	33%	25%	40%	42%
Appreciate Arts		24%	26%		27%	28%
Gain knowledge in a field		64%	65%		62%	62%
Speak/read foreign language		11%	14%		12%	13%
Develop social awareness		37%	46%		43%	46%
Place problems in perspective		49%	57%		52%	55%
Identify/understand moral and ethical issues	32%	54%	58%	32%	56%	58%
Self-understanding		64%	66%		63%	62%
Function independently		95%	89%		90%	89%
Develop self-esteem		65%	63%		65%	62%
Establish course of action		86%	79%		83%	82%
Intellectual self-confidence		79%	80%		75%	72%
Desire for continued learning		71%	70%		71%	69%
Lead & supervise tasks & groups of people	51%	68%	70%	50%	63%	58%
Relate well to people of different races, nations, & religions	58%	70%	77%	54%	66%	66%
Function effectively as a team member	66%	84%	80%	64%	77%	76%
Communicate well orally	84%	89%	90%	84%	84%	85%
Understand others		75%	85%		80%	81%
Understand scientific process		18%	24%		28%	26%
Use computers, technology	69%	66%	56%	63%	56%	55%

## Results from Alumni/ae Surveys, continued

	Enhanced <i>Greatly</i> in current personal and professional activities					
<i>Abilities/type of knowledge developed in Bachelor Program</i>	Stetson Grads			Comparison Grads		
	1993	1996	1998	1993	1996	1998
Acquire new skills / knowledge on my own	46%	57%	58%	46%	61%	62%
Think analytically and logically	47%	44%	51%	52%	60%	62%
Formulate creative/original ideas & solutions	36%	34%	47%	32%	42%	46%
Academic ability		56%	58%		55%	58%
Write effectively	49%	50%	47%	57%	59%	61%
Use quantitative tools (e.g., statistics, graphs)	21%	30%	30%	18%	27%	29%
Appreciate arts		29%	35%		41%	41%
Gain knowledge of a field		41%	43%		38%	37%
Read/speak a foreign language		11%	12%		15%	17%
Develop social awareness		21%	19%		35%	39%
Place problems in perspective		21%	21%		29%	35%
Identify/understand moral and ethical issues	17%	26%	30%	21%	39%	40%
Self-understanding		36%	42%		41%	46%
Function independently		48%	42%		50%	55%
Develop self-esteem		33%	37%		36%	37%
Establish course of action		46%	49%		43%	41%
Intellectual self-confidence		47%	51%		47%	48%
Desire for continued learning		54%	50%		59%	59%
Lead & supervise tasks & groups of people	33%	31%	31%	26%	24%	28%
Relate well to others	27%	28%	31%	20%	27%	27%
Function effectively as a team member	39%	52%	52%	36%	35%	39%
Communicate well orally	55%	47%	46%	47%	38%	41%
Understand others		30%	35%		36%	40%
Under scientific process		26%	19%		27%	26%
Use computers, technology	25%	35%	39%	20%	19%	22%

1993 comparison group contains results from Rollins College, U of Puget Sound, Wake Forest, and Hamline. 1996 comparison group contains results from U of Richmond, St. Lawrence, U of Puget Sound, and Centre. 1998/99 comparison group contains results from Albright College, Beloit College, Centre College, College of the Holy Cross, Denison U, Southwestern U, Wake Forest, St. Lawrence U, Willamette U. Note: Comparison data changes depending on which schools participated in the study.

*Source: HEDS Alumni/ae Surveys conducted in 1998, 2002 and 2004*

## Tuition and Fees

### Stetson - Historical

Year	Undergraduate			Per Credit Hour Fees	
	Tuition	Fees	Total	U-Grad	Graduate
1986 - 1987	\$6,100	\$250	\$6,350		\$200
1987 - 1988	\$6,730	\$280	\$7,010		\$155
1988 - 1989	\$7,370	\$305	\$7,675		\$170
1989 - 1990	\$8,100	\$340	\$8,440		\$185
1990 - 1991	\$8,900	\$385	\$9,285		\$200
1991 - 1992	\$9,610	\$410	\$10,020	\$320	\$215
1992 - 1993	\$10,660	\$450	\$11,110	\$355	\$235
1993 - 1994	\$11,510	\$485	\$11,995	\$385	\$255
1994 - 1995	\$12,315	\$555	\$12,870	\$410	\$275
1995 - 1996	\$13,110	\$590	\$13,700	\$440	\$295
1996 - 1997	\$14,100	\$635	\$14,735	\$470	\$315
1997 - 1998	\$15,100	\$665	\$15,765	\$500	\$350
1998 - 1999	\$15,850	\$800	\$16,650	\$525	\$370
1999 - 2000	\$16,640	\$870	\$17,510	\$550	\$390
2000 - 2001	\$17,475	\$910	\$18,385	\$580	\$410
2001 - 2002	\$18,350	\$960	\$19,310	\$610	\$430
*2002 - 2003	\$19,950	\$1275	\$21,225	\$650	\$430
*2003 - 2004	\$21,300	\$1340	\$22,640	\$685	\$450**
*2004 - 2005	\$22,730	\$1405	\$24,135	\$725	\$475**
*2005 - 2006	\$23,975	\$1475	\$25,450	\$760	\$500**

\*New Students

\*\*DeLand campus, Celebration Education majors

### 2005-06 Undergraduate Tuition by entry date

	Tuition	Fees
New students during fiscal year 2005-06	\$23,975	\$1,475
Students entering during fiscal year 2004-05	\$23,910	\$1,455
Students entering during fiscal year 2003-04	\$23,670	\$1,455
Students entering during fiscal year 2002-03 and before	\$23,275	\$1,185

### 2005-06 Graduate tuition - per credit hour

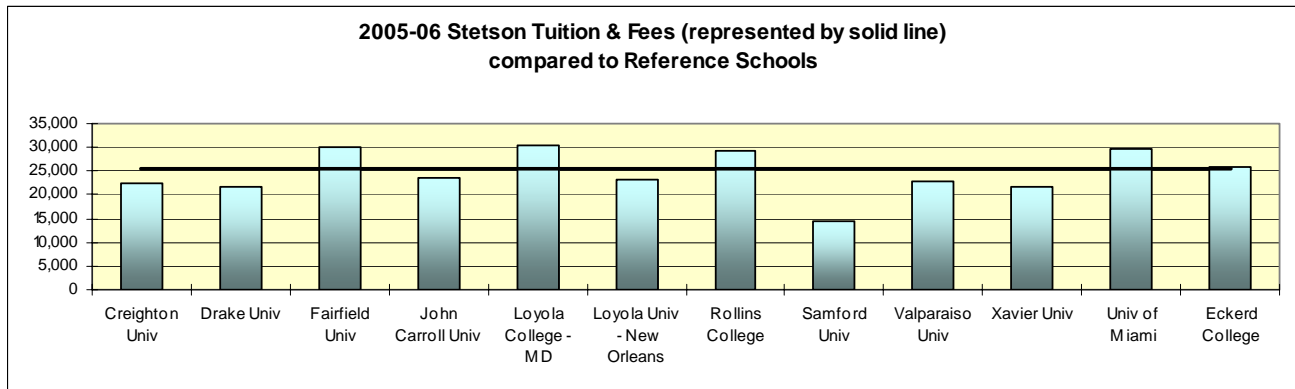
DeLand Campus	\$500
Celebration Campus: Teacher Education	\$500
Counselor Education	\$500
Business Administration	\$600
Law School: JD/MBA	\$625

## 2005 - 06 Peer Schools Comparison - Tuition and Fees

Creighton University	22,382	Loyola Univ – New Orleans	23,200*
Drake University	21,500	Rollins College	29,224
Fairfield University	30,235	Samford University	14,642
John Carroll University	23,630	Valparaiso University	22,750
Loyola College – MD	30,500	Xavier University	21,850
		<b>Stetson University</b>	<b>25,450</b>
<b>Other</b>			
University of Miami	29,504	Eckerd College	25,804

Source: IPEDS

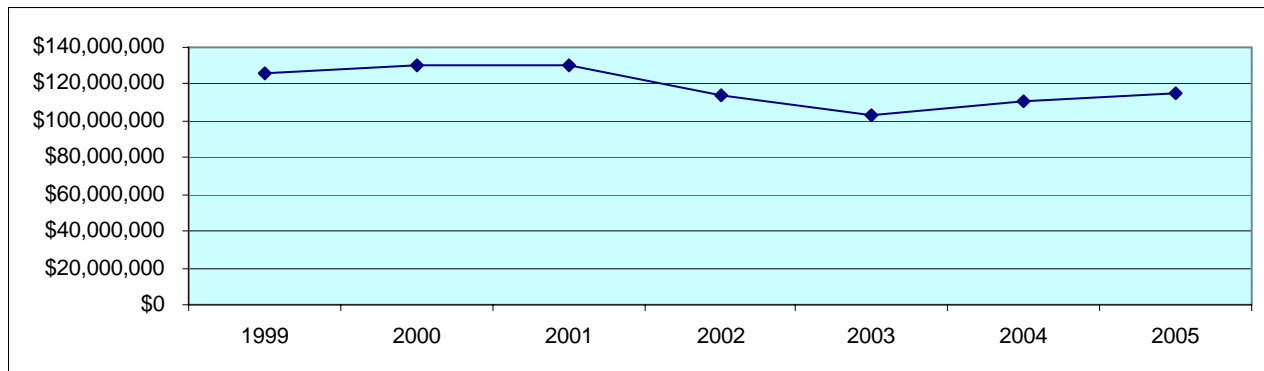
\*from US News



## Financial Information

### Endowment - Market Value

12/31/99	5/31/00	5/31/01	5/31/02	5/31/03	5/31/04	5/31/05
\$125,930,588	\$130,066,800	\$130,407,000	113,679,000	103,268,623	111,045,000	114,753,000





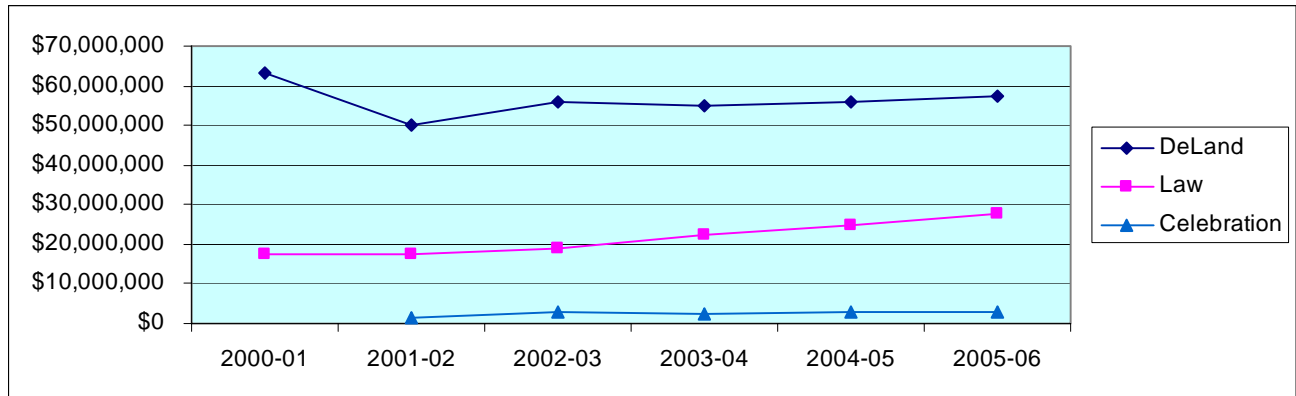
## Endowment - Reference Schools

School	Market Value End FY04	National Rank in Endowment Assets
Loyola Univ - New Orleans	\$304,244,000	152nd
Samford University	\$236,923,000	184th
Creighton University	\$216,379,000	194th
Rollins College	\$211,543,000	198th
Fairfield University	\$137,909,000	267th
John Carroll University	\$135,802,000	270th
Loyola College - MD	\$133,332,000	273rd
Valparaiso University	\$130,427,000	274th
<b>Stetson University</b>	<b>\$111,045,000</b>	<b>302nd</b>
Drake University	\$107,847,000	309th
Xavier University	\$94,024,000	333rd

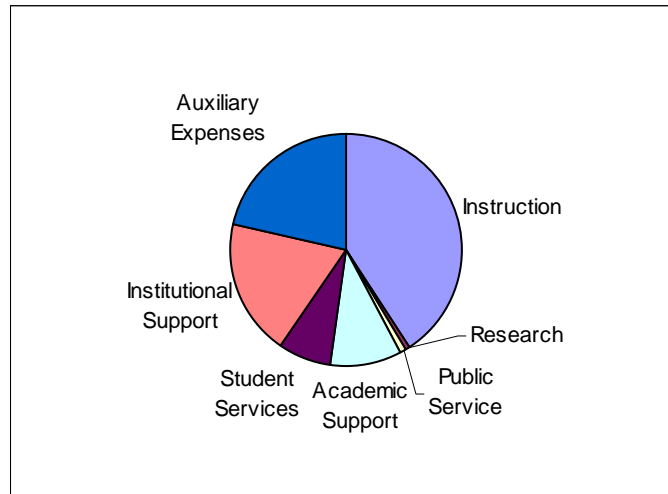
Source: 2004 NACUBO Endowment Study

## Annual Budget

	2000-01	2001-02	2002-03	2003-04	2004-05	2005-06
DeLand	\$63,377,000	\$49,944,000	\$55,670,000	\$54,902,000	\$56,105,000	\$57,236,000
Law	\$17,285,000	\$17,285,000	\$19,188,000	\$22,287,000	\$25,013,000	\$27,576,000
Celebration		\$1,524,000	\$3,118,000	\$2,550,000	\$2,864,000	\$2,691,000



## Expenditures – Fiscal Year 2004



Source: IPEDS Finance Survey

## Physical Plant Statistics

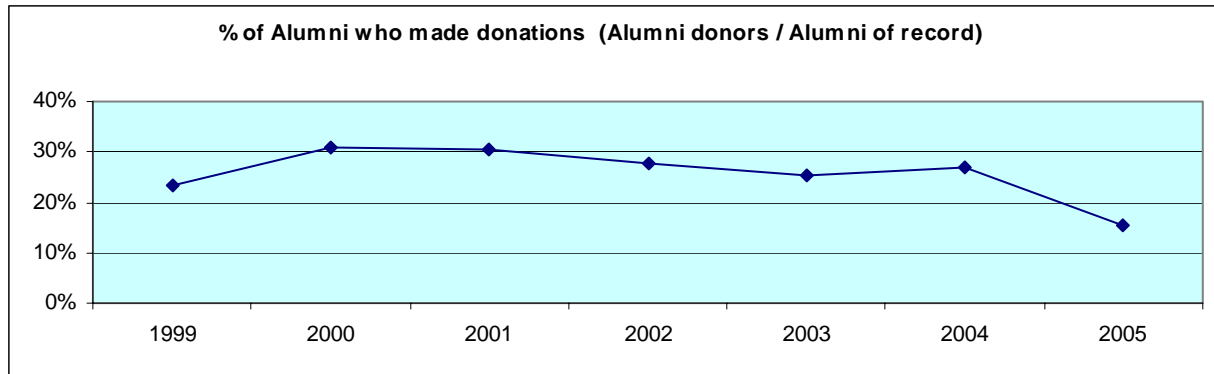
Type of Building	# of buildings	Square footage
Academic	18	390,065
Administrative	11	83,331
Student Services	5	166,612
Athletic facilities	3	58,299
Residence Halls	22	348,438

Source: Stetson University Facilities Index

## Alumni Giving Profile

	1999	2000	2001	2002	2003	2004	2005
Alumni of record	18,240	18,724	14,911	14,718	14,341	10,297	19,761
Alumni solicited	16,040	14,358	10,255	10,116	9,528	8,984	13,360
Alumni donors	4,273	5,759	4,534	4,069	3,653	2,788	3,044
Giving percent of record	23.43%	30.8%	30.4%	27.6%	25.5%	27.1%	15.4%

Source: CAE Report



## Student Financial Aid

### Scholarships/Grants (2005-2006)

<i>Undergraduates</i>	Scholarships & Grants	
	Total	Average
Institutional	\$22,464,842	\$11,306
Federal Need-based	\$1,556,589	\$3,760
Federal Non-need-based	\$30,000	\$1,500
Florida Merit	\$3,026,459	\$2,888
Florida Need-based	\$504,973	\$1,305
Florida Non-need-based	\$4,262,430	\$2,802
External	\$584,890	\$2,543
<b>TOTAL Scholarships/Grants</b>	<b>\$32,430,183</b>	<b>\$15,421</b>

### Total Aid and Self-Help\* (2005-2006)

	New Full-time Freshman	Full-time Undergrads
Total financial aid	\$12,754,649	\$46,537,168
Average financial aid package	\$23,796	\$21,655
Total Self-help	\$2,625,585	\$10,621,903
Average self-help	\$7,233	\$7,974

\*Self help includes work-study and loans.

# ACADEMIC PROGRAMS

## Degrees and Programs Offered (2005-06)

### College of Arts and Sciences

American Studies	B.A.	Latin American Studies	B.A.
Aquatic & Marine Biology*	B.S.	Mathematics	B.A., B.S.
Art	B.A.	Medical Technology	B.S.
Biology	B.A., B.S.	Modern Languages	
Biochemistry*	B.S.	French	B.A.
Chemistry	B.S.	German	B.A.
Communication Studies	B.A.	Spanish	B.A.
Computer Information Systems*	B.S.	Molecular Biology*	B.S.
Computer Science	B.S.	Music	B.A.
Digital Arts	B.A.	Philosophy	B.A.
Economics	B.A., B.S.	Physics	B.S.
Elementary Education*	B.A., B.S.	Political Science	B.A., B.S.
English	B.A.	Psychology	B.A., B.S.
Environmental Science	B.A., B.S.	Religious Studies	B.A.
Geography	B.A., B.S.	Russian Studies	B.A.
History	B.A.	Secondary Education*	B.A., B.S.
Humanities	B.A.	Social Science*	B.A.
Integrative Health Sciences		Social Science - Education*	B.A.
Health Science	B.S.	Sociology	B.A., B.S.
Rehabilitative Studies*	B.S.	Sport Management	B.A.
International Studies	B.A.	Theatre Arts	B.A.

\* Minor NOT available

### Minors only

Africana Studies	Art History & Studio Art	Journalism
Anthropology	Creative Writing	Russian
Applied Ethics	Health Care Issues	Women and Gender Studies

### Cooperative Programs

Engineering	Pre-Med	Forestry and Environmental Studies
Medical Technology	Pre-Law	

### School of Business Administration

Accounting Information Systems	B.B.A.	General Business Administration	B.B.A.
Economics*	B.B.A.	International Business*	B.B.A.
Electronic Business Technology	B.B.A.	Management	B.B.A.
Family Business	B.B.A.	Marketing	B.B.A.
Finance	B.B.A.		

\* Minor NOT available

### Minors only

Applied Statistics	Business Law
--------------------	--------------

## School of Music

B.A. Music  
B.A. Digital Arts - Music Track

B.M.E. Instrumental/General  
B.M.E. Vocal/General

B.M. Performance  
Guitar  
Orchestral Instrument  
Piano/Organ  
Voice

B.M. Theory and Composition  
B.M. Elective Studies in a Specific Outside Field  
Digital Arts  
Business  
Other

## Minors

General Music

Church Music (must be attached to a music degree)

## Graduate

Mental Health Counseling	M.S.	Curriculum and Instruction	Ed.S.
Marital, Couple, & Family		English	M.A.
Counseling/Therapy	M.S.	Educational Leadership	M.Ed., Ed.S.
School Counseling	M.S., Ed.S.	Accounting	M.Acc.
Reading Education	M.Ed.	Executive MBA	M.B.A.
Exceptional Student Education	M.Ed.	General Business Administration	M.B.A.

## Enrollment by Major - Undergraduate (Fall 2005)

Includes Double Majors

### College of Arts and Sciences

Major	Frequency	% of A&S Majors	Major	Frequency	% of A&S Majors
American Studies	12	0.9%	History	36	2.8%
Aquatic & Marine Biology	19	1.5%	Humanities	12	0.9%
Art	37	2.9%	International Studies	27	2.1%
Biochemistry	23	1.8%	Latin American Studies	3	0.2%
Biology-Sec Education Certif	1	0.1%	Math-Sec Education Certif	4	0.3%
Biology	94	7.3%	Mathematics	31	2.4%
Chemistry	12	0.9%	Med Tech	2	0.2%
Communication Studies	78	6.1%	Molecular Biology	8	0.6%
Computer Information Systems	3	0.2%	Music	9	0.7%
Computer Science	24	1.9%	Philosophy	22	1.7%
Digital Arts-Art Track	20	1.6%	Physics	15	1.2%
Digital Arts-Computer Science	3	0.2%	Political Science	116	9.1%
Digital Arts-Music Track	5	0.4%	Psychology	139	10.9%
Economics – BA	5	0.4%	Rehabilitative Studies	19	1.5%
Elementary Education	88	6.9%	Religious Studies	33	2.6%
English-Sec Education Certif	8	0.6%	Russian Studies	10	0.8%
English	90	7.0%	Social Science-Sec Ed Certif	5	0.4%
Environmental Science	20	1.6%	Social Science	8	0.6%
French	7	0.5%	Sociology	39	3.0%
General Studies	43	3.4%	Spanish	22	1.7%
German - Sec Education	3	0.2%	Sport Administration	1	0.1%
German	12	0.9%	Sport Management	45	3.5%
Health Science	45	3.5%	Theatre Arts	22	1.7%
			<b>Total A&amp;S Majors</b>	<b>1280</b>	<b>100.0%</b>

### School of Business

Major	Frequency	% of Bus. Majors
Accounting-Public	1	0.1%
Accounting Information	74	10.5%
E-Business Technology	24	3.4%
Economics – BBA	7	1.0%
Family Business	19	2.7%
Finance	91	13.0%
General Business Admin	217	30.9%
International Business	82	11.7%
Management	88	12.5%
Marketing	99	14.1%
<b>Total Business Majors</b>	<b>702</b>	<b>100.0%</b>

### School of Music

Major	Frequency	% of Mus. Majors
BM Outside Field-Business	7	3.5%
BM Outside Field-Digital Art	2	1.0%
BM Outside Field	23	11.4%
Guitar	8	4.0%
Music Ed-Instrumental/Gen	56	27.7%
Music Education-Vocal	24	11.9%
Music Theatre Honors	1	0.5%
Orchestral Instrument	30	14.9%
Piano/Organ	10	5.0%
Theory & Comp-Comp	6	3.0%
Theory & Comp:Theory	5	2.5%
Voice	30	14.9%
<b>Total Music Majors</b>	<b>202</b>	<b>100.0%</b>

Discovery (Undeclared)	190
No Major Necessary	12

## Enrollment by Minor - Undergraduate (Fall 2005)

Includes Double Minors

	School of Student's Major				School of Student's Major		
	A & S	Business	Music		A & S	Business	Music
Accounting Minor	2	9		Geography	3		
Africana Studies	1	1		German	7	6	
American Studies	2	2		Health Care Issues	10		
Anthropology	5			Health Science	2		
Applied Ethics Minor	5			History	12	4	
Applied Statistics	1			International Studies	5	2	
Art	11			Journalism	23	2	
Art History	8	1		Latin American Studies	1		
Biology	4			Management	6	10	
Business Law	23	39	1	Marketing	17	18	
Chemistry	5			Mathematics	11	1	
Communication Studies	6	9		Music Minor	28	8	
Computer Science	1			Philosophy	7		
Digital Arts	12	7		Physics	4		
E-Business Technology	6	42		Political Science	13	4	1
Economics	5	1		Psychology	33	8	
Education	27	1		Religious Studies	30	4	3
English	10	2	1	Russian	5		
English – Creative Writing	12		1	Russian Studies	3		
Environmental Science	1			Sociology	17	4	
Family Business	4	12		Spanish	39	16	1
Finance	1	5		Sport Management	3	4	
French	13	5		Theatre Arts	7	1	1
General Business Admin	23	3		Women & Gender Studies	12		
				<b>TOTALS</b>	<b>486</b>	<b>231</b>	<b>9</b>

## Enrollment by Major - Graduate (Fall 2005)

Major	#	%	Major	#	%
Counseling:Marr/Fam Therapy	5	1.2%	Marital, Couple & Fam CSL/Ther	40	9.6%
Curriculum and Instruction	2	0.5%	Master of Accountancy	13	3.1%
Education	1	0.2%	Master of Business Admin	142	34.2%
Educational Leadership	54	13.0%	Mental Health Counseling	27	6.5%
English	13	3.1%	No Major Necessary	29	7.0%
Except Student ED/Varying Exc	1	0.2%	Reading Education	15	3.6%
Exceptional Education	7	1.7%	School Counseling	23	5.5%
Law	43	10.4%	<b>TOTALS</b>	<b>415</b>	

## Enrollment by Major - Undergraduate (Historical)

Includes Double Majors

<b>Arts &amp; Sciences</b>	<b>1998</b>	<b>1999</b>	<b>2000</b>	<b>2001</b>	<b>2002</b>	<b>2003</b>	<b>2004</b>	<b>2005</b>
American Studies	11	6	6	5	5	5	8	12
Aquatic & Marine Biology				7	13	16	20	19
Art	23	31	42	36	35	34	36	37
Biochemistry	30	32	31	29	20	15	17	23
Biology	111	114	110	113	95	105	98	94
Biology - Molecular		1	3	5	4	3	6	8
Biology – special	3			1	2			
Chemistry	17	15	14	17	14	12	16	12
Communication Studies	46	55	73	72	69	57	73	78
Computer Info Systems	12	4	11	14	4	2	3	3
Computer Science	44	54	49	34	26	18	13	24
Digital Arts	50	74	82	67	63	51	44	28
Economics	7	3	4	11	10	7	5	5
Education - Elementary	89	72	78	75	89	99	92	88
Education – General	1			10	1	17		
Education - Secondary	16	17	17	21	29	21	15	21
English	64	66	72	68	67	83	97	90
Environmental Science	31	24	19	19	21	17	13	20
Foreign Language - French	12	10	11	8	6	8	6	7
Foreign Language - German	1	4	5	3	8	6	7	12
Foreign Language - Spanish	15	20	20	21	17	17	17	22
Geography	1	7	6	4	2	2		
History	37	28	31	20	34	42	39	36
Honors								
Humanities	6	7	4	8	10	8	9	12
Integ Health - Health Science				15	39	35	47	45
Integ Health -Rehab Studies			2	9	18	18	17	19
International Studies	2	6	6	13	18	18	29	27
Journalism self-defined	1							
Latin American Studies			1	1	3	3	2	3
Mathematics	18	18	13	9	10	15	19	31
Med Tech	1		1		1		1	2
Music Lib. Arts	2	3	3	7	3	9	7	9
Philosophy	10	12	13	9	11	14	14	22
Physical Education		1						
Physics	14	13	21	17	16	15	14	15
Political Science	84	73	102	99	108	113	106	116
Psychology	108	101	132	135	146	139	143	139
Religious Studies	20	15	16	16	29	28	34	33
Russian Studies	3	2	2	2	16	13	13	10
SES-Athletic Training	20	24	22	14	5	2		
SES-Exercise Science	55	51	45	27	7	3		
SES-Movement Therapy	21	24	13	1				
SES-Sport Communications	7	4	1					
Social Science	4	2	4	3	2	1	7	8
Sociology	33	47	45	35	37	42	38	39
Sport Admin/Mgmt	33	39	44	40	35	42	48	46
Theatre Arts	12	11	11	13	14	17	21	22
<b>Total</b>	<b>1075</b>	<b>1090</b>	<b>1185</b>	<b>1133</b>	<b>1159</b>	<b>1172</b>	<b>1241</b>	<b>1237</b>



## Enrollment by Major - Undergraduate (Historical), continued

<b>Business</b>	<b>1998</b>	<b>1999</b>	<b>2000</b>	<b>2001</b>	<b>2002</b>	<b>2003</b>	<b>2004</b>	<b>2005</b>
Accounting Info Systems	80	87	81	60	55	59	60	75
Business Economics	4	7	10		14	14	9	7
Computer Info Systems	15	34	32	30	17	4		
Electronic Business Tech				13	40	37	37	24
Family Business							5	19
Finance	63	77	88	99	102	107	93	91
General Business Admin	212	221	239	232	209	216	199	217
International Business	42	56	79	86	77	63	65	82
Management	66	80	72	73	72	81	89	88
Marketing	67	92	104	110	119	107	110	99
<b>Total</b>	<b>549</b>	<b>654</b>	<b>705</b>	<b>703</b>	<b>705</b>	<b>688</b>	<b>667</b>	<b>702</b>

<b>Music</b>	<b>1998</b>	<b>1999</b>	<b>2000</b>	<b>2001</b>	<b>2002</b>	<b>2003</b>	<b>2004</b>	<b>2005</b>
Bach of Music w/Bus Adm	17	11	16	14	13	15	5	7
Bach of Music w/outside Field	11	16	6	13	20	19	27	23
Bachelor of Music w/Dig Arts	7	8	5	8	5	4	3	2
Music Education	87	82	74	71	69	70	79	80
Music Lib. Arts	2	3	3	7	3	9	7	9
Musical Theater		1					1	1
Performance:								
Guitar	11	8	10	10	8	7	8	8
Orchestral Instrument	19	23	14	21	21	26	24	30
Piano	1							
Piano/Organ	9	5	7	11	9	17	17	10
Voice	25	29	38	54	36	34	26	30
Theory & Composition	5	6	16	11	13	9	10	11
Undeclared (Music)	5	8	1	1				
<b>Total</b>	<b>197</b>	<b>197</b>	<b>187</b>	<b>214</b>	<b>194</b>	<b>201</b>	<b>200</b>	<b>202</b>

No major or college						12	47	55
Discovery	242	224	192	220	193	209	240	190

## Degrees Awarded by Major - Undergraduate (Historical)

(includes second majors)

Arts & Sciences	7/1/98 to 6/30/99	7/1/99 to 6/30/00	7/1/00 to 6/30/01	7/1/01 to 6/30/02	7/1/02 to 6/30/03	7/1/03 to 6/30/04	7/1/04 to 6/30/05
American Studies	3	1	2	2	3		3
Art	4	6	8	11	8	5	7
Biology	25	20	24	19	24	26	25
Biology, Aquatic							4
Biology, Molecular					1	1	3
Bio-Chemistry	4	5	4	10	11	1	3
Chemistry	3	6		2	3	2	1
Communications	14	10	19	22	21	16	19
Communications, Other	2	1	2				
Computer Science	8	5	9	5	7	6	1
Web Page, Digital/Multimedia	4	4	16	15	20	11	15
Economics	5	2	1	2	3	2	2
English	16	12	22	23	11	20	21
Environmental Science / Studies	6	6	5	7	4	7	3
Foreign Language: French	3	1	2	3	1	2	3
Foreign Language: German	1		2		1		1
Foreign Language: Spanish	1	1	8	8	6	5	12
Geography	2	2	3	2		2	
Health Sciences				2	10	3	17
History	13	11	6	4	5	8	10
Humanities	1	5	4	2	4	3	1
International Studies/Sciences			2	1	4	2	6
Latin American Studies						1	1
Linguistics, Comparative Study						1	
Mathematics	3	3	3	4	3	4	2
Medical Technology		1					
Music – Liberal Arts	2			3			4
Philosophy	1	1	2	4	4	4	6
Physics	3	1	5	4	1	5	2
Political Science	23	10	12	19	20	24	18
Physiological PSY, Psy-biology				1			
Psychology	28	24	32	29	31	34	27
Religious Studies	5	8	5	6	9	6	12
Russian Studies	1		1		2	2	6
SES: Athletic Trng, Sports Med		4	3	6	2	2	
SES: Ex Sci & Mvmt Therapy	15	20	20	15	3	3	5
SES: Sport & Fitness Admin	6	8	12	12	10	10	6
Social Sciences	2	2	3	7	2	4	2
Sociology	9	11	22	11	10	13	8
Teacher Educ – Elem	34	20	16	18	18	28	21
Teacher Educ - English	3	1					
Teacher Educ – General							1
Theatre Arts	5	1	3	3	1	3	5
<b>Total</b>	<b>255</b>	<b>213</b>	<b>278</b>	<b>282</b>	<b>263</b>	<b>266</b>	<b>283</b>

## Degrees Awarded by Major - Undergraduate (Historical), continued

<b>Business</b>	<b>7/1/98 to 6/30/99</b>	<b>7/1/99 to 6/30/00</b>	<b>7/1/00 to 6/30/01</b>	<b>7/1/01 to 6/30/02</b>	<b>7/1/02 to 6/30/03</b>	<b>7/1/03 to 6/30/04</b>	<b>7/1/04 to 6/30/05</b>
Accounting	22	15	20	18	10	20	16
Business Administration	38	37	45	29	30	36	33
Business Economics		2	2	3	1	4	3
Electronic Business Tech					10	14	15
Finance	29	22	26	34	30	36	32
Information Resources (CIS)	3	5	12	6	10	3	
International Business	3	7	8	15	18	15	9
Management	17	24	16	24	29	26	28
Marketing	19	33	41	39	43	26	39
<b>Total Business</b>	<b>131</b>	<b>145</b>	<b>170</b>	<b>168</b>	<b>181</b>	<b>180</b>	<b>175</b>

## Music

Music Perf – Piano & Organ	2		1	1		3	3
Music Perf – Orch Instrument	2	6	2	8	1	2	4
Music Perf – Viola, Guitar	5	1		2	2	1	1
Music Perf – Voice	5	2	7	4	6	6	4
Music – Other	7	5	1	5	12	9	12
Music Theory & Composition	1		2	1	2	2	1
Teacher Educ – Music	19	11	12	16	19	10	5
<b>Total Music</b>	<b>41</b>	<b>25</b>	<b>25</b>	<b>37</b>	<b>42</b>	<b>33</b>	<b>30</b>

<b>TOTAL</b>	<b>427</b>	<b>383</b>	<b>473</b>	<b>487</b>	<b>486</b>	<b>479</b>	<b>488</b>
--------------	------------	------------	------------	------------	------------	------------	------------

## Degrees Awarded - by Degree Type (Historical)

	<b>1998-99</b>	<b>1999-00</b>	<b>2000-01</b>	<b>2001-02</b>	<b>2002-03</b>	<b>2003-04</b>	<b>2004-05</b>
<b>BACHELORS</b>	<b>427</b>	<b>383</b>	<b>473</b>	<b>487</b>	<b>486</b>	<b>479</b>	<b>488</b>
Arts & Sciences	255	213	278	282	263	266	283
Business	131	145	170	168	181	180	175
Music	41	25	25	37	42	33	30
<b>MASTERS</b>	<b>118</b>	<b>122</b>	<b>119</b>	<b>136</b>	<b>118</b>	<b>182</b>	<b>181</b>
Arts & Sciences	23	48	40	42	53	78	76
Business	95	74	79	94	65	104	105
<b>LAW</b>	<b>202</b>	<b>243</b>	<b>257</b>	<b>240</b>	<b>255</b>	<b>284</b>	<b>254</b>

## College of Law

### Law School Tuition – Full-time

1998-99	1999-00	2000-01	2001-02	2002-03	2003-04	2004-05	2005-06
\$19,750	\$20,350	\$21,165	\$21,905	\$22,785	\$23,924	\$24,760	\$26,280

### Law School Tuition – Full-time Summer Session

1998	1999	2000	2001	2002	2003	2004	2005
\$4,950	\$5,100	\$5,305	\$5,475	\$5,695	\$5,980	\$6,200	\$6,550

### Law School Key Facts

- Ranked No. 1 for trial advocacy and No. 3 for legal writing by U.S. News & World Report
- Small classes and individual attention to student needs
- Nationally acclaimed faculty who excel in their fields
- State-of-the-art library, courtrooms and classrooms
- Centers for Excellence in Advocacy, Elder Law, Higher Education Law and Policy, and International Law
- Home to the National Clearinghouse for Science, Technology and the Law
- Headquarters, National Conference of Law Reviews
- Two academic journals
- Honors program for top-ranked students
- 2005 world champions at the Vis International Arbitration Moot, first U.S. law school to win since 1996
- One of only three law schools to share space with a working court, Florida's Second District Court of Appeal
- Vibrant campus life with diverse student organizations, interscholastic activities and competitions
- Summer programs in Buenos Aires, Argentina; Granada, Spain; The Hague, Netherlands; Freiburg, Germany; and Tianjin, China
- The first law school in Florida to require pro bono service by students and faculty
- Excellent career development services
- Campuses in beautiful Gulfport and Tampa, Florida

For more information on the College of Law, visit [www.law.stetson.edu](http://www.law.stetson.edu).

# STUDENT INFORMATION

## SAT / ACT Scores

Fall 2005 New Freshmen

	75th Percentile	25th Percentile	Average
SAT - Math	613	520	572
SAT - Verbal	620	520	573
SAT - Total	1240	1060	1154

ACT Math	26	21	23
ACT English	27	21	24
ACT Composite	27	22	24

High School GPA	4.12	3.43	3.77
-----------------	------	------	------

90% of new freshman submitted SAT scores  
 44% of new freshman submitted ACT scores  
 96% of new freshman submitted High School GPA

## Range of SAT / ACT Scores

Fall 2005 New Freshmen

SAT	Verbal	Math
700 - 800	4.0%	4.5%
600 - 699	33.2%	30.8%
500 - 599	48.8%	52.0%
400 - 499	13.6%	12.3%
300 - 399	.4%	.4%

ACT	Composite	English	Math
30 - 36	6.2%	13.0%	5.5%
24 - 29	49.6%	43.3%	39.5%
18 - 23	42.1%	36.6%	50.0%
12 - 17	2.1%	6.7%	5.0%
6 - 11	--	.4%	--

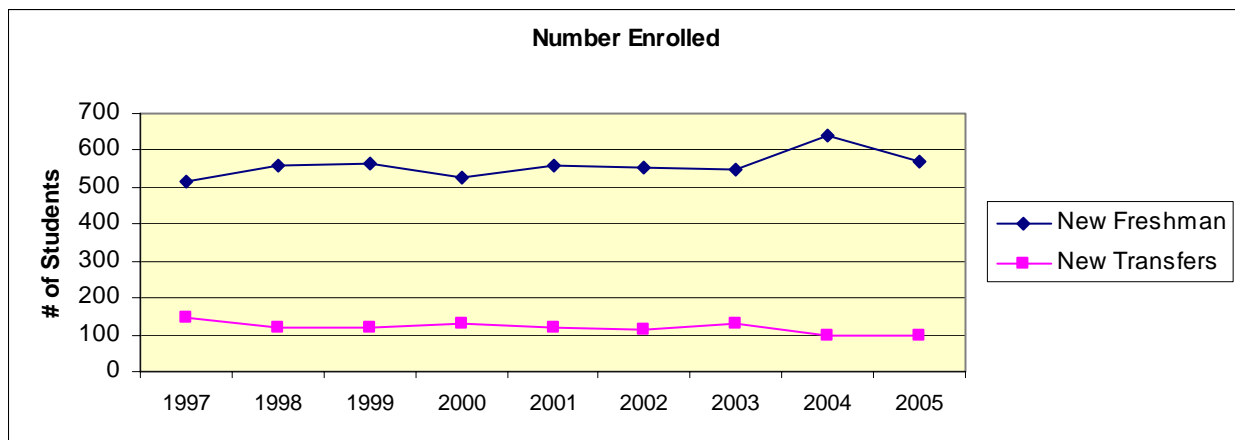
## First-time Freshmen & Transfers

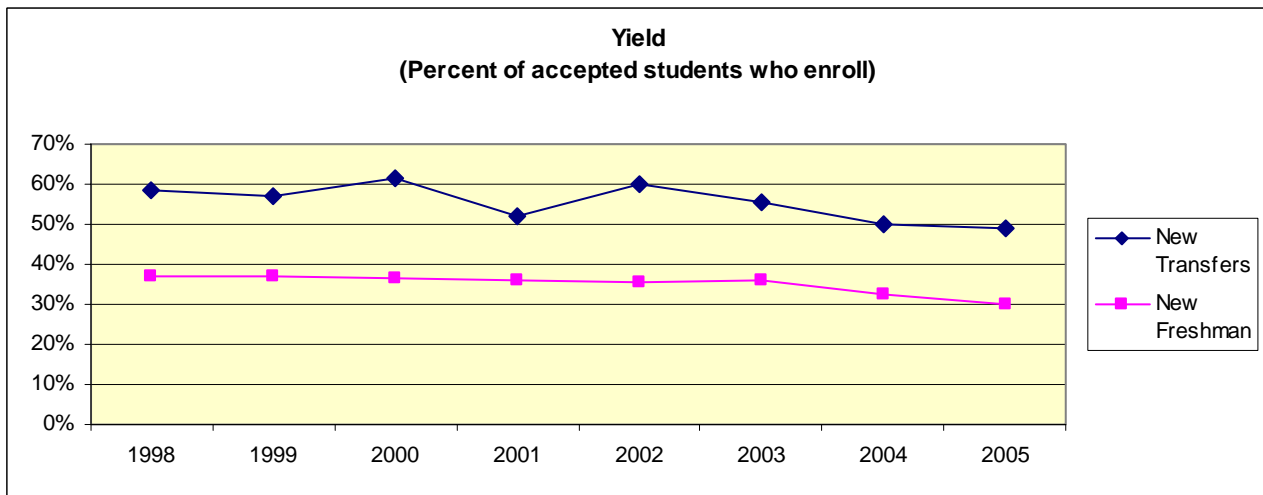
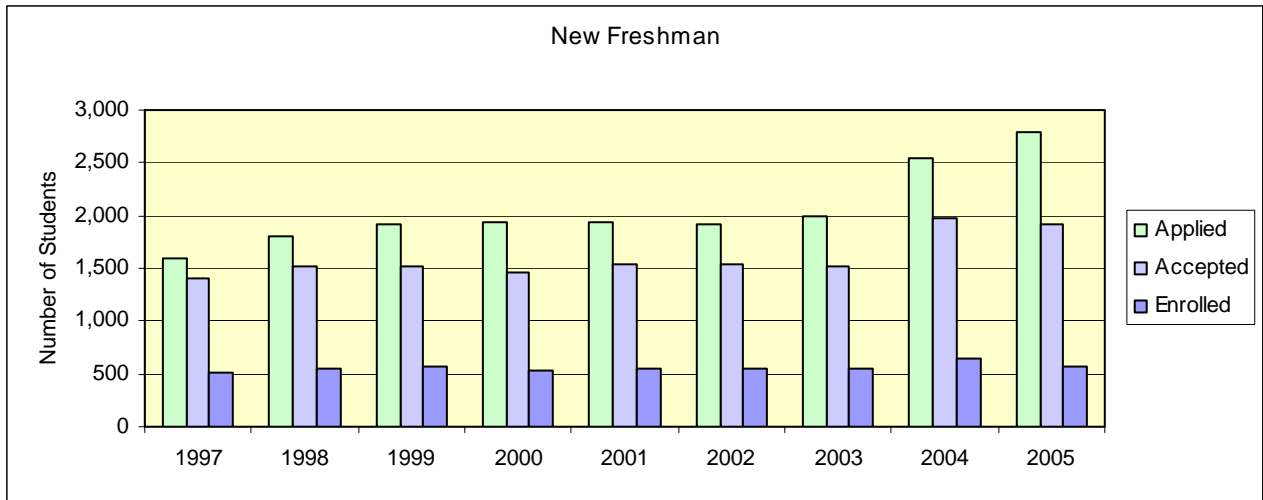
(Source: Admission's Office "Entering Class Profile")\*

<b>Freshman</b>	<b>1997</b>	<b>1998</b>	<b>1999</b>	<b>2000</b>	<b>2001</b>	<b>2002</b>	<b>2003</b>	<b>2004</b>	<b>2005</b>
<b>Inquired**</b>	25,157	26,535	25,866	30,980	24,542	26,826	34,558	30,530	27,630
<b>Applied</b>	1,592	1,797	1,913	1,941	1,942	1,919	1,992	2,540	2,782
Accepted	1,396	1,521	1,523	1,456	1,545	1,542	1,527	1,980	1,918
Enrolled									
Men	219	237	228	252	244	222	244	262	246
Women	296	320	335	277	313	329	302	379	325
<b>TOTAL</b>	<b>515</b>	<b>557</b>	<b>563</b>	<b>529</b>	<b>557</b>	<b>551</b>	<b>546</b>	<b>641</b>	<b>571</b>
Yield rate for accepted students	36.9%	36.6%	37.0%	36.3%	36.1%	35.7%	35.8%	32.4%	29.8%
<b>Transfers</b>									
<b>Inquired</b>	1,739	1,782	1,696	1,771	1,815	1,929	1,421	1,024	1,029
<b>Applied</b>	327	290	344	397	359	293	334	306	325
Accepted	249	205	210	211	228	187	237	200	200
Enrolled									
Men	55	52	48	51	47	36	52	37	40
Women	92	68	72	79	72	76	79	63	58
<b>TOTAL</b>	<b>147</b>	<b>120</b>	<b>120</b>	<b>130</b>	<b>119</b>	<b>112</b>	<b>131</b>	<b>100</b>	<b>98</b>
	59%	58.5%	57.1%	61.6%	52.2%	59.9%	55.3%	50.0%	49.0%
<b>Special</b>	6	10	12	14	20	17	19	21	18
<b>TOTAL</b>	<b>668</b>	<b>687</b>	<b>695</b>	<b>673</b>	<b>696</b>	<b>684</b>	<b>696</b>	<b>762</b>	<b>687</b>

\*This report is based upon the Admission's Office "Entering Class Profile" prepared in August for the first university faculty meeting each year. Final statistics for matriculating students are prepared by the Institutional Research Office in September for reporting purposes and may differ based on the criteria for determining "new" students and the time of the download.

\*\* "Inquired" includes mailing lists purchased from College Board and other sources.

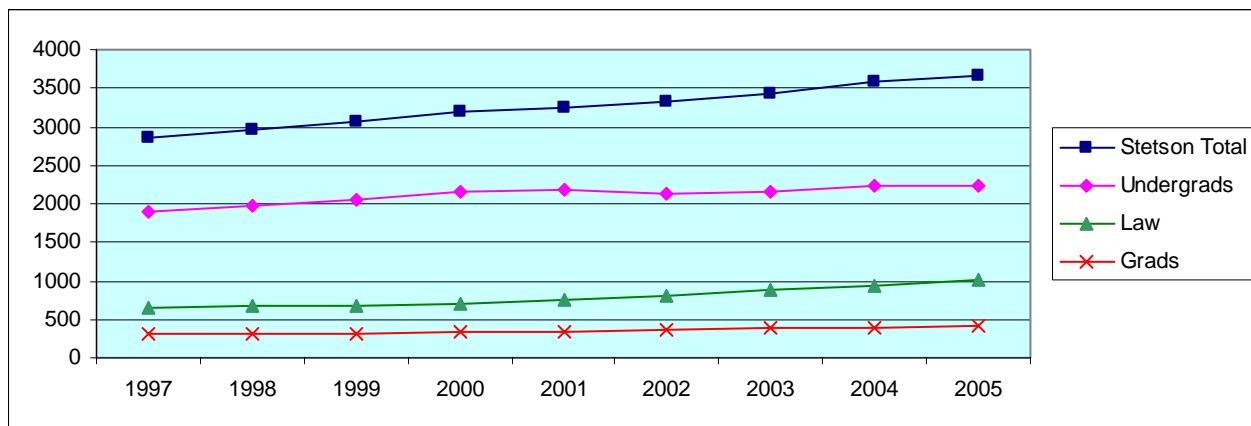




## Enrollment

### Headcount, Fall Semester (Historical)

	<u>1997</u>	<u>1998</u>	<u>1999</u>	<u>2000</u>	<u>2001</u>	<u>2002</u>	<u>2003</u>	<u>2004</u>	<u>2005</u>
<b><u>Full-time</u></b>									
Undergraduates	1840	1913	1965	2064	2063	2063	2070	2163	2160
Graduates	60	57	48	63	61	81	93	123	141
Post-Bacc	<u>8</u>	<u>9</u>	<u>13</u>	<u>6</u>	<u>6</u>	<u>5</u>	<u>4</u>	<u>6</u>	<u>8</u>
DeLand	1908	1979	2026	2133	2130	2149	2167	2292	2309
College of Law	<u>629</u>	<u>668</u>	<u>658</u>	<u>680</u>	<u>727</u>	<u>711</u>	<u>736</u>	<u>784</u>	<u>825</u>
<b>University (Full-time)</b>	<b>2537</b>	<b>2647</b>	<b>2684</b>	<b>2813</b>	<b>2857</b>	<b>2860</b>	<b>2903</b>	<b>3076</b>	<b>3134</b>
<b><u>Part-time</u></b>									
Undergraduates	68	74	97	91	111	79	91	67	74
Graduates	177	167	185	219	227	250	259	247	245
Post-Bacc	<u>59</u>	<u>68</u>	<u>72</u>	<u>48</u>	<u>37</u>	<u>30</u>	<u>27</u>	<u>26</u>	<u>21</u>
DeLand	304	309	354	358	375	359	377	340	340
College of Law	<u>16</u>	<u>11</u>	<u>15</u>	<u>28</u>	<u>23</u>	<u>99</u>	<u>159</u>	<u>161</u>	<u>191</u>
<b>University (Part-time)</b>	<b>320</b>	<b>320</b>	<b>369</b>	<b>386</b>	<b>398</b>	<b>458</b>	<b>536</b>	<b>501</b>	<b>531</b>
<b><u>Total</u></b>									
Undergraduates	1908	1987	2062	2155	2174	2142	2161	2230	2234
Graduates	237	224	233	282	288	331	352	370	386
Post-Bacc	<u>67</u>	<u>77</u>	<u>85</u>	<u>54</u>	<u>43</u>	<u>35</u>	<u>31</u>	<u>32</u>	<u>29</u>
DeLand	2212	2288	2380	2491	2505	2508	2544	2632	2649
College of Law	<u>645</u>	<u>679</u>	<u>673</u>	<u>708</u>	<u>750</u>	<u>810</u>	<u>895</u>	<u>945</u>	<u>1016</u>
<b>TOTAL University</b>	<b>2857</b>	<b>2967</b>	<b>3053</b>	<b>3199</b>	<b>3255</b>	<b>3318</b>	<b>3439</b>	<b>3577</b>	<b>3665</b>





## Graduate Enrollment

	Fall 2002		Fall 2003		Fall 2004		Fall 2005	
	FT	PT	FT	PT	FT	PT	FT	PT
DeLand Graduates	57	148	65	116	87	132	74	141
DeLand P-Bacc	<u>3</u>	<u>29</u>	<u>4</u>	<u>25</u>	<u>6</u>	<u>26</u>	<u>3</u>	<u>18</u>
DeLand Total	60	177	69	141	93	158	77	159
Celebration Graduates	24	57	28	78	36	65	67	36
Celebration P-Bacc	<u>2</u>	<u>1</u>	<u>0</u>	<u>2</u>	<u>0</u>	<u>0</u>	<u>0</u>	<u>3</u>
Celebration Total	26	58	28	80	36	65	72	64
MBA/JD	<u>0</u>	<u>45</u>	<u>0</u>	<u>65</u>	<u>0</u>	<u>50</u>	<u>0</u>	<u>43</u>
<b>Graduate Total</b>	<b><u>86</u></b>	<b><u>280</u></b>	<b><u>97</u></b>	<b><u>286</u></b>	<b><u>129</u></b>	<b><u>273</u></b>	<b><u>149</u></b>	<b><u>266</u></b>

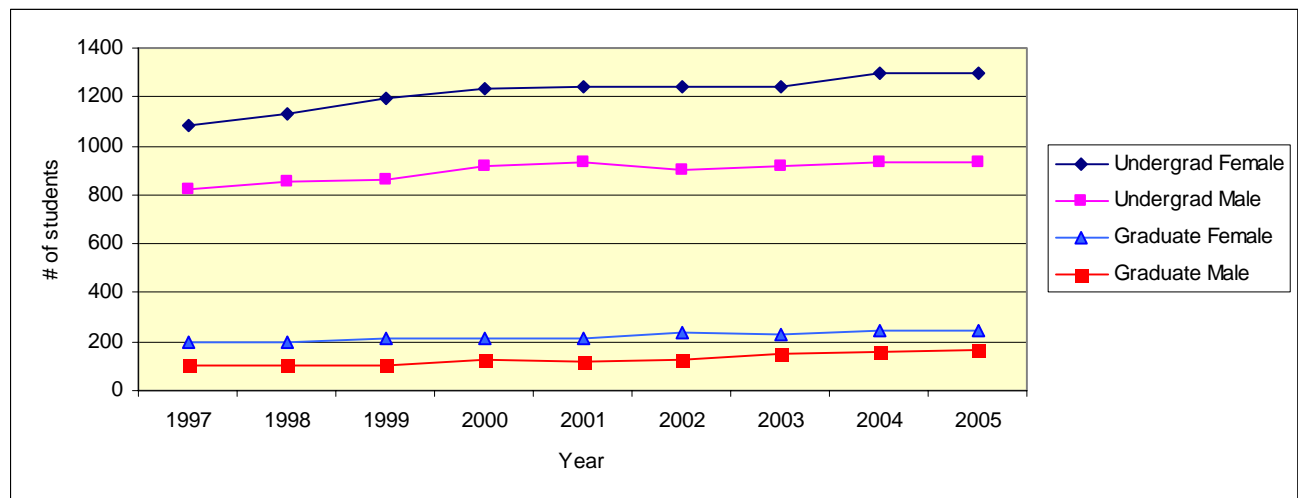
## Enrollment by Gender (Historical)

### Undergraduate Students

	1997	1998	1999	2000	2001	2002	2003	2004	2005
Male	824	852	864	921	931	900	920	930	937
Female	1084	1135	1198	1234	1243	1242	1241	1300	1297
Total	1908	1987	2062	2155	2174	2142	2161	2230	2234

### Graduate Students (excluding College of Law)

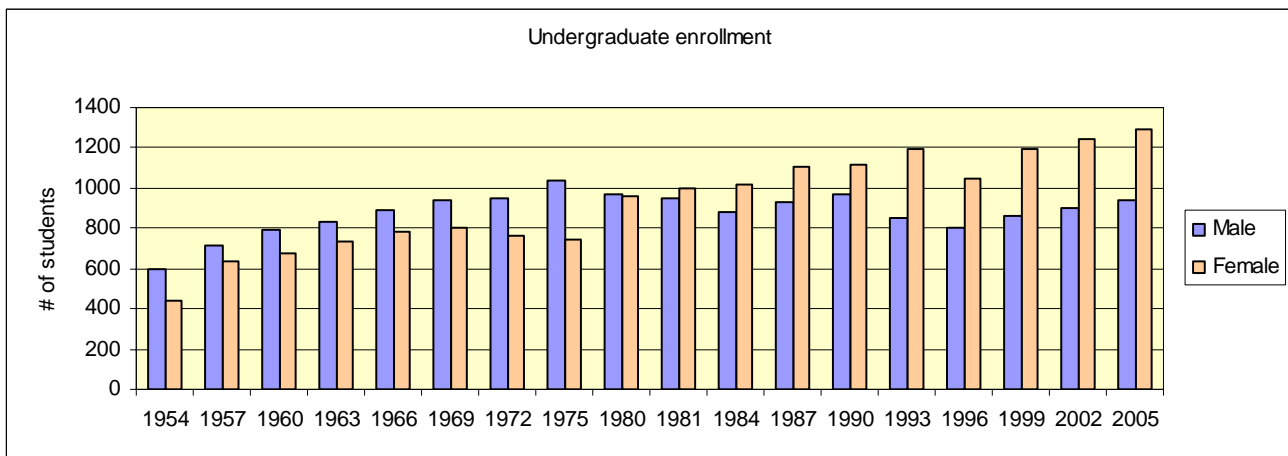
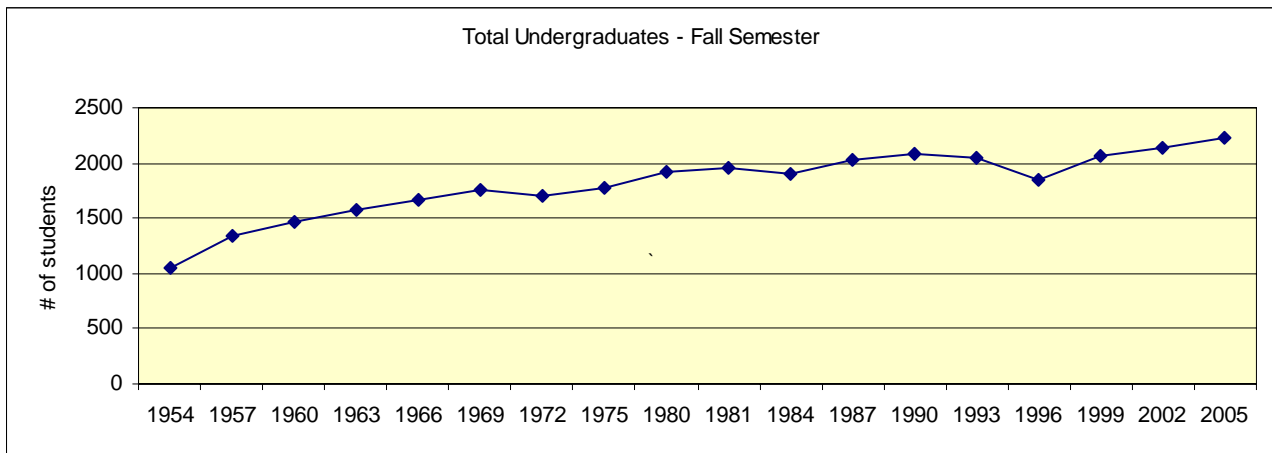
	1997	1998	1999	2000	2001	2002	2003	2004	2005
Male	106	102	101	124	118	125	151	159	168
Female	198	199	217	212	213	241	232	243	247
Total	304	301	318	336	331	366	383	402	415



### Headcount, Fall Semester (Historical - 1954 to 2005)

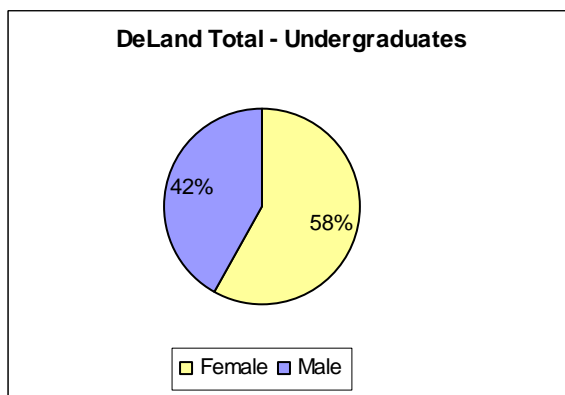
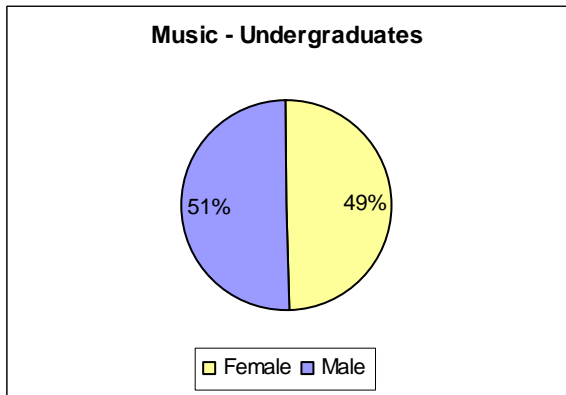
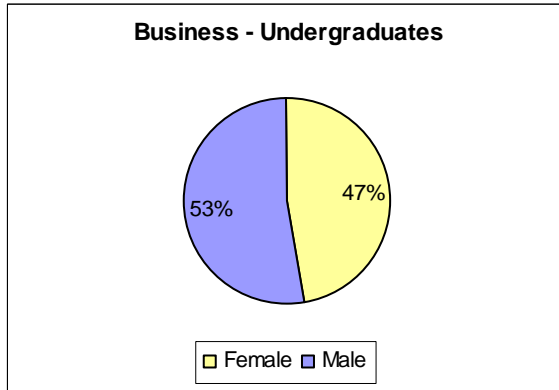
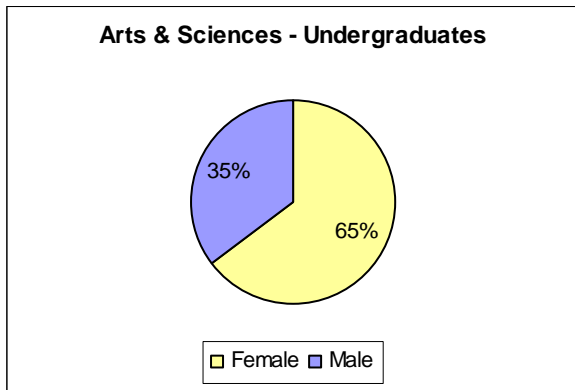
Undergraduate	Male		Female		TOTAL
	#	%	#	%	
Fall 1954	598	57%	444	43%	1042
Fall 1957	711	53%	634	47%	1345
Fall 1960	792	54%	676	46%	1468
Fall 1963	831	53%	737	47%	1568
Fall 1966	893	53%	782	47%	1675
Fall 1969	944	54%	806	46%	1750
Fall 1972	946	55%	763	45%	1709
Fall 1975	1035	58%	748	42%	1783
Fall 1980	972	50%	955	50%	1927
Fall 1981	954	49%	997	51%	1951
Fall 1984	882	46%	1021	54%	1903
Fall 1987	927	46%	1110	54%	2037
Fall 1990	973	47%	1118	53%	2091
Fall 1993	855	42%	1190	58%	2045
Fall 1996	804	43%	1047	57%	1851
Fall 1999	864	42%	1198	58%	2062
Fall 2002	900	42%	1242	58%	2142
Fall 2005	937	42%	1297	58%	2234

Source: HEGIS and IPEDS Enrollment Reports



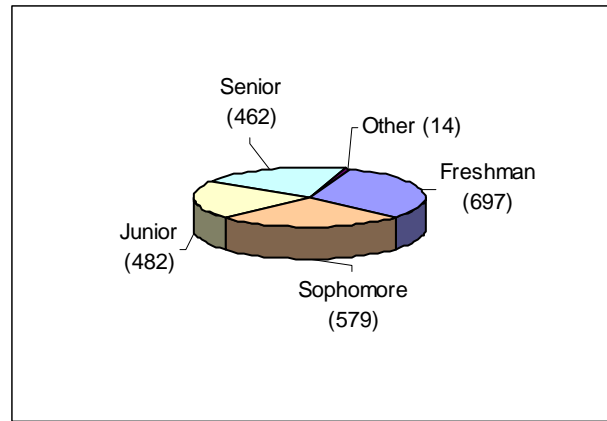
**College or School & Gender (Fall 2005)**

	<b>Female</b>	<b>Male</b>	<b>Total</b>
<b>Arts &amp; Sciences</b>			
Undergraduate	883	482	1365
DeLand Graduate	108	29	137
Celebration Graduate	57	14	71
<b>A &amp; S Total</b>	<b>1048</b>	<b>525</b>	<b>1573</b>
<b>Business</b>			
Undergraduate	317	356	673
DeLand Graduate	34	65	99
Celebration Graduate	27	38	65
Law-MBA Graduate	21	22	43
<b>Total</b>	<b>399</b>	<b>481</b>	<b>880</b>
<b>Music</b>			
Undergraduate only	97	99	196
<b>Law</b>	<b>542</b>	<b>474</b>	<b>1016</b>
<b>Stetson Total</b>	<b>2086</b>	<b>1579</b>	<b>3665</b>



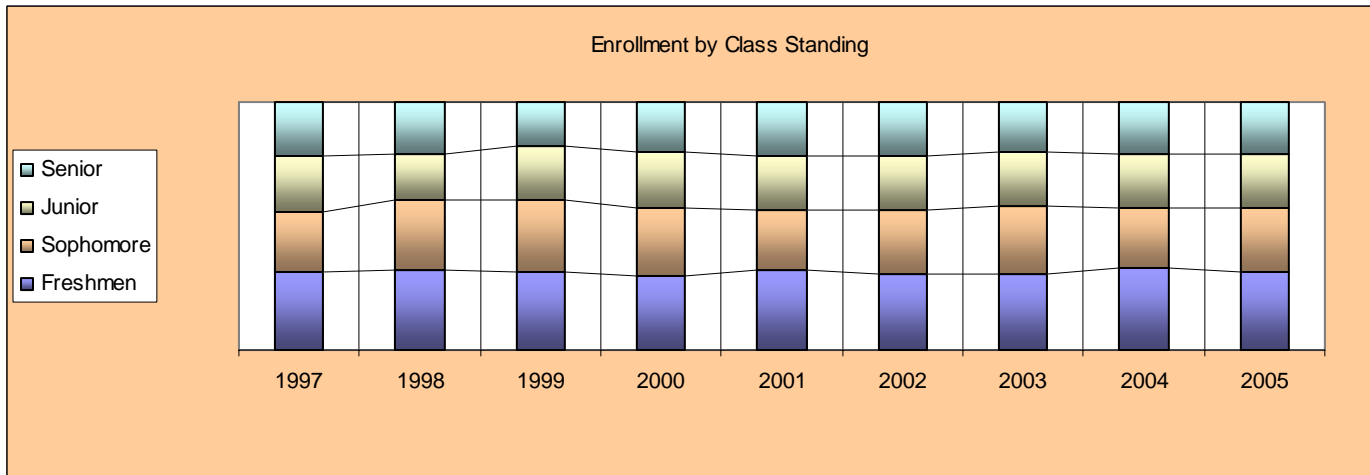
**Class Standing\* - Undergraduate (Fall 2005)**

Headcount	Female	Male	Total
Freshmen	387	310	697
Sophomore	333	246	579
Junior	282	200	482
Senior	286	176	462
Other	9	5	14
<b>TOTAL</b>	<b>1297</b>	<b>937</b>	<b>2234</b>



**Class Standings - Undergraduate (Historical)**

	1997	1998	1999	2000	2001	2002	2003	2004	2005
Freshmen	597	640	651	632	690	659	657	738	697
Sophomore	464	563	581	586	528	544	594	539	579
Junior	428	366	453	489	480	460	455	481	482
Senior	412	409	359	430	468	469	438	459	462
Other	7	9	18	18	8	10	17	13	14



**\*Class Standing Definitions:**

- Freshmen            0 – 26 hours earned
- Sophomore        27 – 59 hours earned
- Junior              60 – 89 hours earned
- Senior              90+ hours earned

## Ethnicity (Fall 2005)

	Undergraduate		Graduate & Post Bacc		Law	
	#	%	#	%	#	%
African American	89	4.0%	21	5.1%	58	5.7%
Native American	11	.5%	1	.2%	5	.5%
Asian	39	1.7%	9	2.2%	24	2.4%
Hispanic / Latino	158	7.1%	34	8.2%	120	11.8%
White (US Resid)	1730	77.4%	304	73.3%	774	76.2%
Intl / Res. Alien	81	3.6%	20	4.8%	8	.8%
Other / Unknown	126	5.6%	26	6.3%	27	2.7%

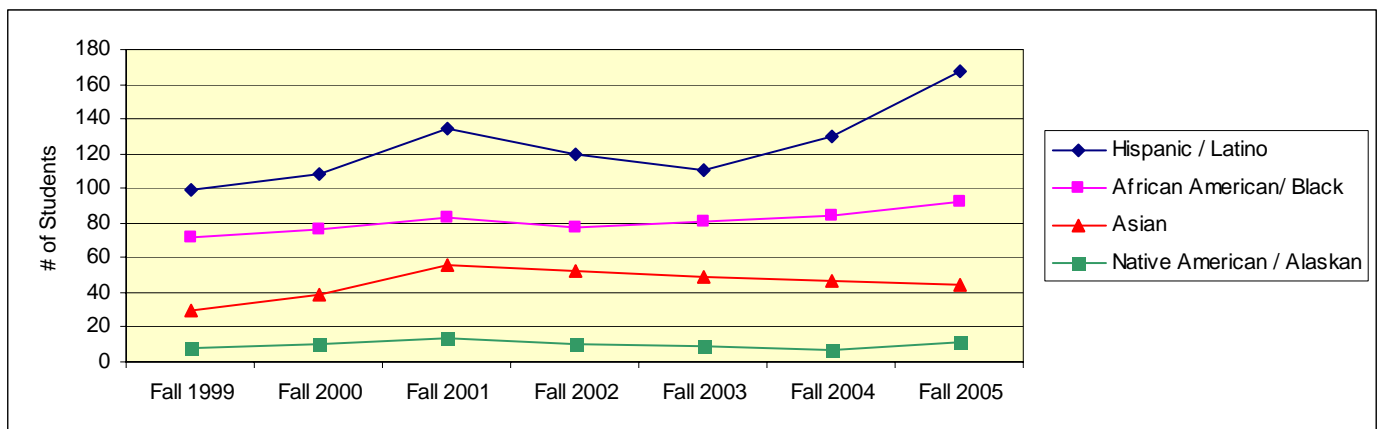
## Enrollment By Ethnicity - Undergraduate (Historical)

	Fall 1999	Fall 2000	Fall 2001	Fall 2002	Fall 2003	Fall 2004	Fall 2005
African American	72	76	80	73	77	80	89
Native American	8	10	14	10	9	7	11
Asian	30	39	45	47	45	39	39
Hispanic / Latino	99	108	123	109	104	124	158
White (US Resid)	1706	1766	1789	1766	1800	1802	1730
Intl / Non-Res. Alien	147	156	87	71	74	79	81
Other / Unknown			36	66	52	99	126
Total	2062	2155	2174	2142	2161	2230	2234

## ALANA Enrollment - Undergraduate (Historical)

(Ethnicity of all students, including non-residents, who do not consider themselves White/Caucasian)

	Fall 1999	Fall 2000	Fall 2001	Fall 2002	Fall 2003	Fall 2004	Fall 2005
Hispanic / Latino	99	108	135	120	111	130	167
African American / Black	72	76	83	77	81	84	92
Asian	30	39	56	52	49	47	44
Native American / Alaskan	8	10	14	10	9	7	11

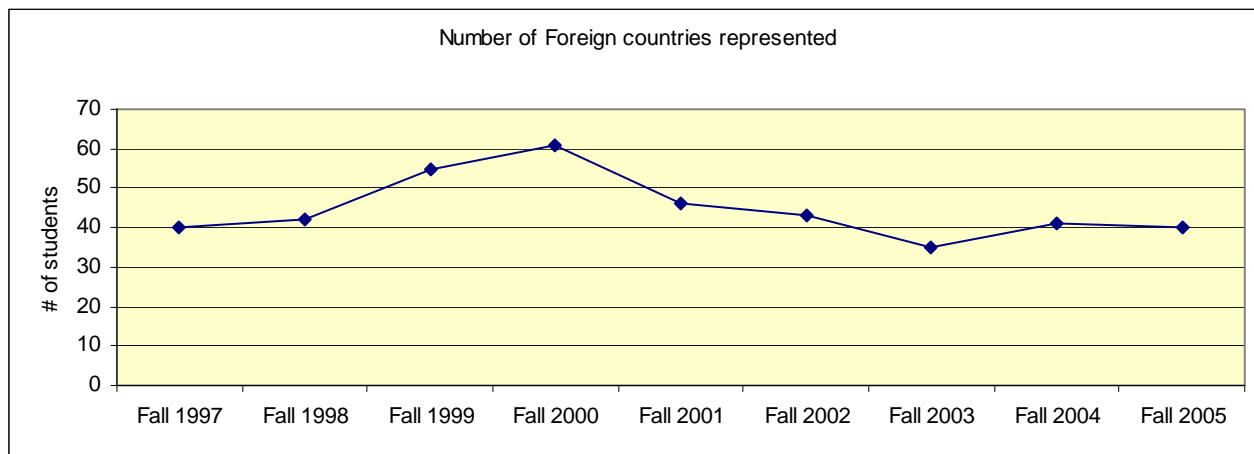


## International / Non-Resident Students Home country - Undergraduate (Fall 2005)

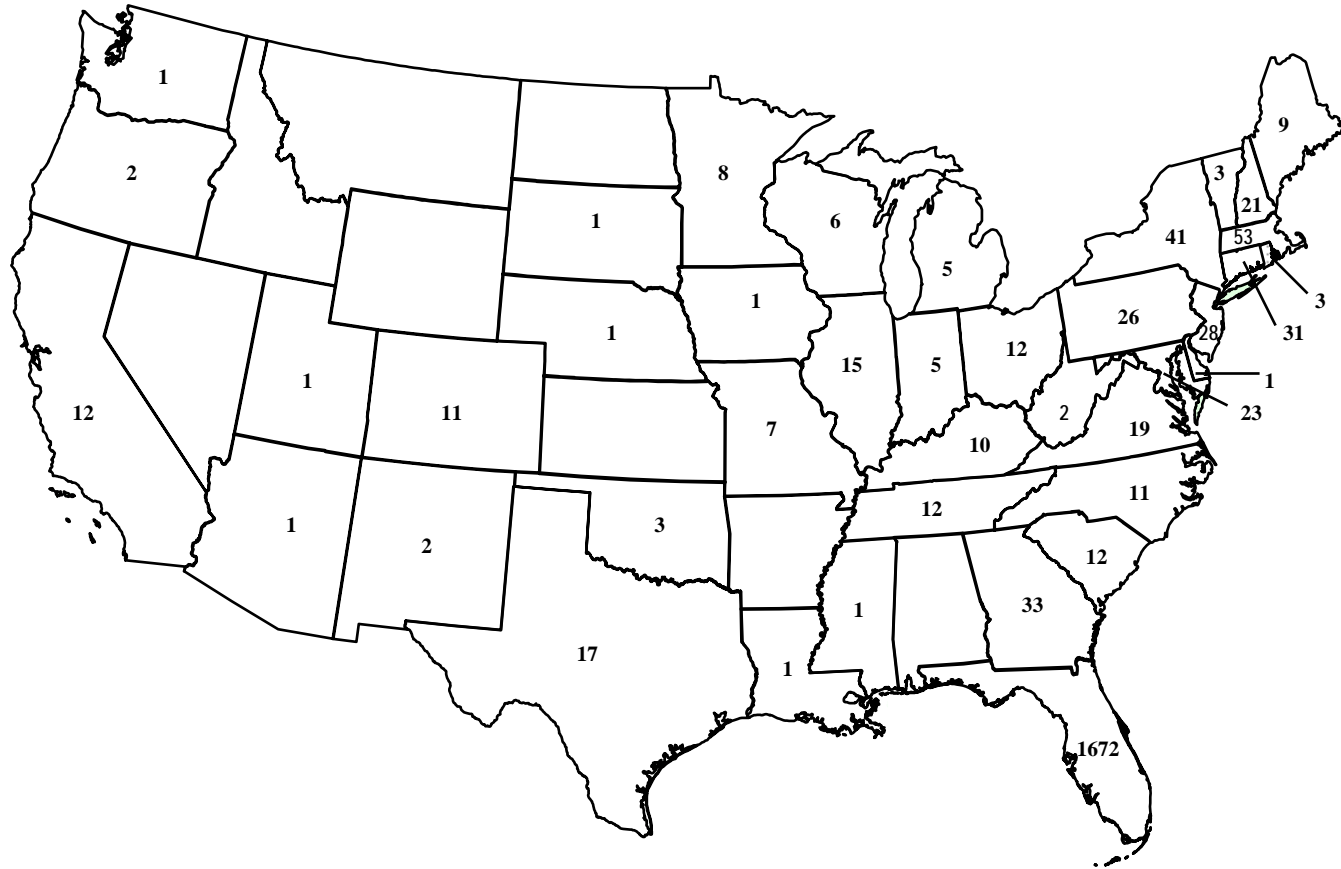
Canada	10	Ireland	2	Belarus	1	Kyrgyzstan	1
Jamaica	8	Norway	2	Colombia	1	Mexico	1
England	6	Russia	2	Cuba	1	Nigeria	1
Germany	4	Spain	2	El Salvador	1	Peru	1
Japan	3	Sweden	2	France	1	Poland	1
Venezuela	3	Switzerland	2	Hungary	1	Serbia	1
Brazil	2	Trinidad & Tobago	2	Iceland	1	Sri Lanka	1
Bulgaria	2	Aruba	1	India	1	Tanzania	1
Cayman Islands	2	Austria	1	Jordan	1	Uganda	1
Honduras	2	Bahamas	1	Kenya	1	United Kingdom	1

## Number of Foreign Countries represented (Historical)

1997-98	1998-99	1999-00	2000-01	2001-02	2002-03	2003-04	2004-05	2005-06
40	42	55	61	46	43	35	41	40



# Enrollment by Home State - Fall 2005 (Undergraduates)



**Enrollment by Home State - Undergraduate (Historical)**

	1997	1998	1999	2000	2001	2002	2003	2004	2005
Alabama	1	1	8	6	6	9	2		
Alaska			1	1	1	1			1
Arizona	1			2	2	2	3	1	1
Arkansas	1	1	1	2	2	2	2	1	
California	2	4	5	5	5	4	4	8	12
Colorado	8	5	3	2	1	4	6	12	11
Connecticut	19	21	26	27	24	33	24	29	31
Delaware							1	1	1
Florida	1432	1510	1530	1606	1657	1594	1665	1705	1672
Georgia	32	39	45	40	52	51	39	36	33
Hawaii	1								
Idaho					1	2			
Illinois	12	16	15	16	16	11	16	13	15
Indiana	11	7	7	7	6	9	3	3	5
Iowa	4	4	3	2		2			1
Kansas		2	3	3	5	6	3	1	
Kentucky	8	7	11	5	4	6	5	6	10
Louisiana	2	3	3	4	2	4	3	3	1
Maine	8	5	6	3	2	9	9	11	9
Maryland	16	14	12	9	14	18	17	21	23
Massachusetts	33	33	34	33	45	44	41	52	53
Michigan	8	6	6	2	2	3	2	4	5
Minnesota	5	3	3	4	4	4	3	7	8
Mississippi	1	2	2	3	3	2	3	1	1
Missouri	7	9	10	11	9	8	6	9	7
Montana									
Nebraska	1					1		3	1
Nevada		2	2	1					
New Hampshire	7	6	6	15	13	16	21	20	21
New Jersey	25	15	12	12	14	21	23	26	28
New Mexico	1	2	2	1	1	2	2	2	2
New York	46	47	45	41	47	47	30	36	41
North Carolina	11	11	9	12	10	11	6	7	11
North Dakota					1				
Ohio	15	12	13	11	14	14	11	10	12
Oklahoma	1	2	2	4	5	4	3	3	3
Oregon	3	3	3	3	1	2	2	2	2
Pennsylvania	17	16	23	28	22	31	22	21	26
Rhode Island	10	5	3	4	4	8	7	6	3
South Carolina	5	10	12	11	12	13	15	12	12
South Dakota		1	1	1	1	1			1
Tennessee	10	10	9	9	11	14	18	16	12
Texas	10	15	13	17	16	17	11	16	17
Utah	1	1	1		3	3	2	2	1
Vermont	3	2	2	4	3	2	6	5	3
Virginia	7	3	7	14	17	19	14	16	19
Washington	1	1	1	1	1	2	1	2	1
West Virginia	1	1	1	1	2	1	2	2	2
Wisconsin	2	1	3	5	5	6	7	5	6
Wyoming								1	
Total	1789	1858	1904	1988	2066	2063	2060	2137	2124



## Undergraduate Enrollment by Florida County (Historical)

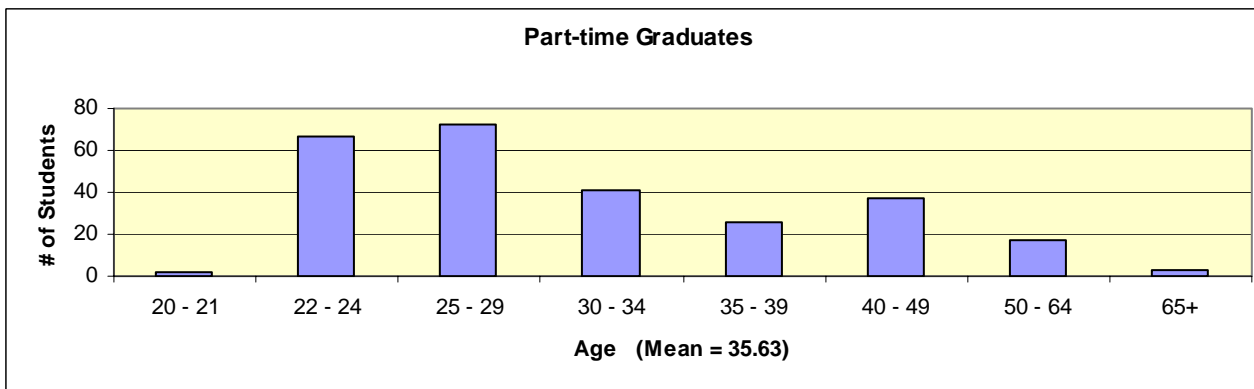
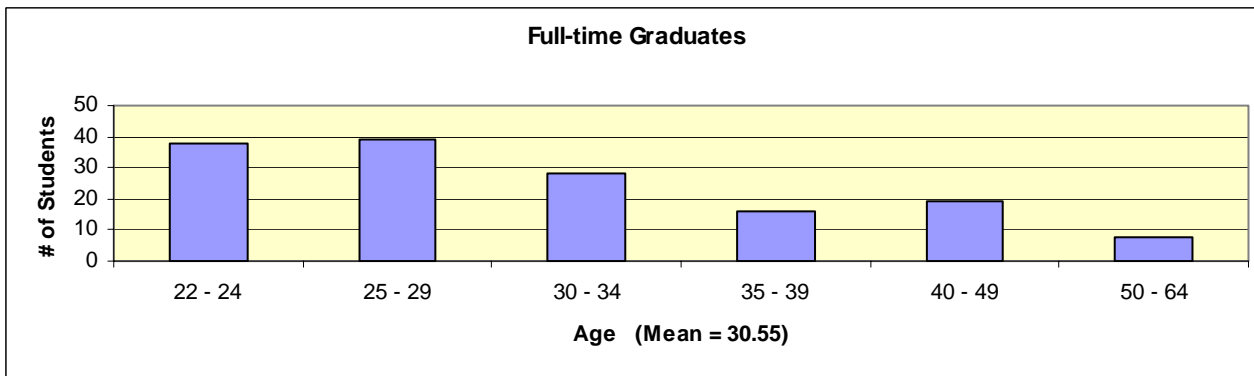
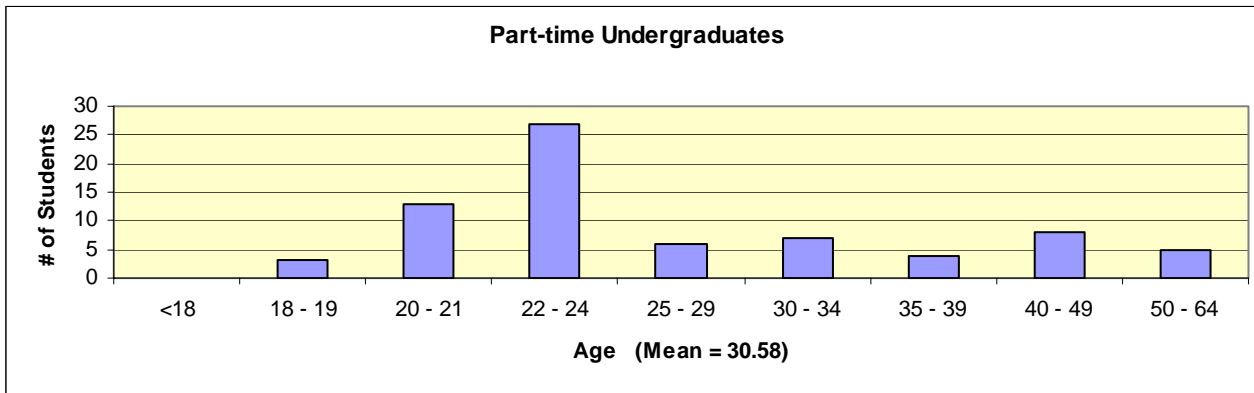
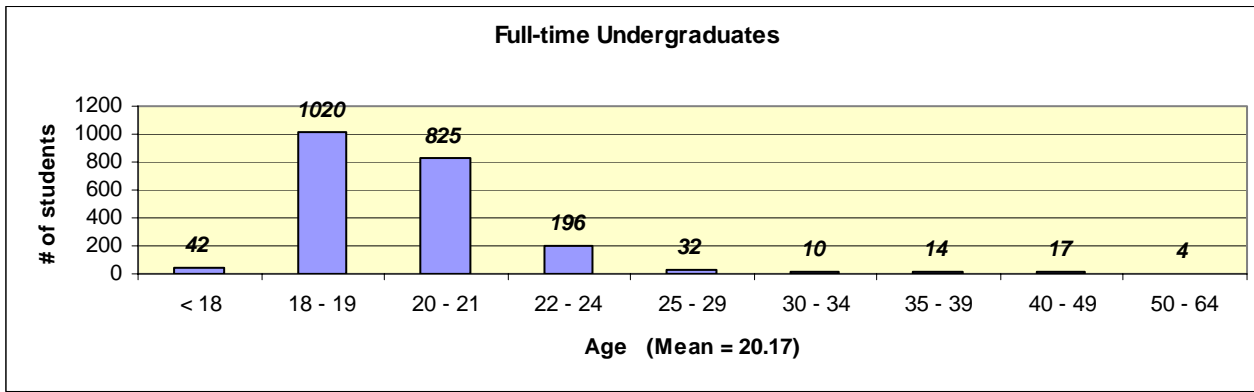
	2001	2002	2003	2004	2005
Alachua	10	13	15	12	17
Bay	10	12	9	8	7
Bradford	1	0	0	2	0
Brevard	71	66	82	92	91
Broward	62	63	60	58	58
Charlotte	10	8	10	8	15
Citrus	16	9	10	12	9
Clay	8	9	7	13	13
Collier	35	28	38	41	34
Columbia	2	2	1	1	2
Dade	24	30	33	38	50
Desoto	2	0	1	2	3
Dixie	2	0	1	1	1
Duval	50	53	65	63	56
Escambia	11	10	10	8	7
Flagler	21	18	19	22	23
Gadsden	1	0	1	1	0
Gilchrist	0	0	0	0	0
Gulf	4	2	1	0	0
Hardee	1	1	1	2	1
Hendry	0	1	1	2	1
Hernando	8	9	12	12	11
Highlands	5	4	5	5	6
Hillsborough	44	37	35	27	33
Indian River	35	26	23	23	21
Jackson	0	1	0	1	1
Jefferson	1	0	0	0	0
Lafayette	1	1	0	1	1
Lake	40	38	40	43	38

	2001	2002	2003	2004	2005
Lee	49	51	48	43	51
Leon	13	13	11	9	14
Madison	1	1	2	2	1
Manatee	17	17	17	25	25
Marion	33	35	33	34	23
Martin	29	25	20	22	32
Monroe	8	7	10	8	9
Nassau	2	3	4	6	3
Okaloosa	9	12	11	11	14
Okeechobee	1	1	1	3	3
Orange	112	123	128	136	151
Osceola	14	11	12	17	22
Palm Beach	89	87	101	100	103
Pasco	15	15	16	16	18
Pinellas	76	72	61	54	59
Polk	34	44	37	33	33
Putnam	7	8	3	2	4
Santa Rosa	4	5	7	9	4
Sarasota	53	35	31	34	33
Seminole	99	103	118	121	103
St. Johns	19	18	25	30	19
St. Lucie	24	21	24	23	23
Sumter	0	1	0	1	1
Suwannee	2	1	1	1	0
Taylor	0	0	0	0	0
Union	1	0	0		1
Volusia	468	420	426	443	405
Wakulla	0	0	1	1	1

## Enrollment by Religious Affiliation - Undergraduate (Fall 2005)

Anglican	4	Eastern Religions, Other	4	Presbyterian	86
Assembly of God	2	Episcopal	33	Protestant Christian	78
Baptist	142	Greek Orthodox	9	Reformed	1
Brethren, Nonspec	1	Islam (Muslim/Moslem)	2	Seventh Day Adventist	3
Buddhism	1	Jewish	28	Unitarian	1
Catholic	314	Lutheran	55	United Church of Christ	4
Christian Science	1	Mennonite	1	Universalist	1
Church of Christ	13	Methodist	99	Non Denominational Christian	98
Church of God	7	Morman Latter Day Saints	9	No preference	405
Church of the Nazarene	1	Others	47	Unknown	768
Congregational	1	Pentacostal Holiness	7	<b>TOTAL</b>	<b>2234</b>
Disciples of Christ	8				

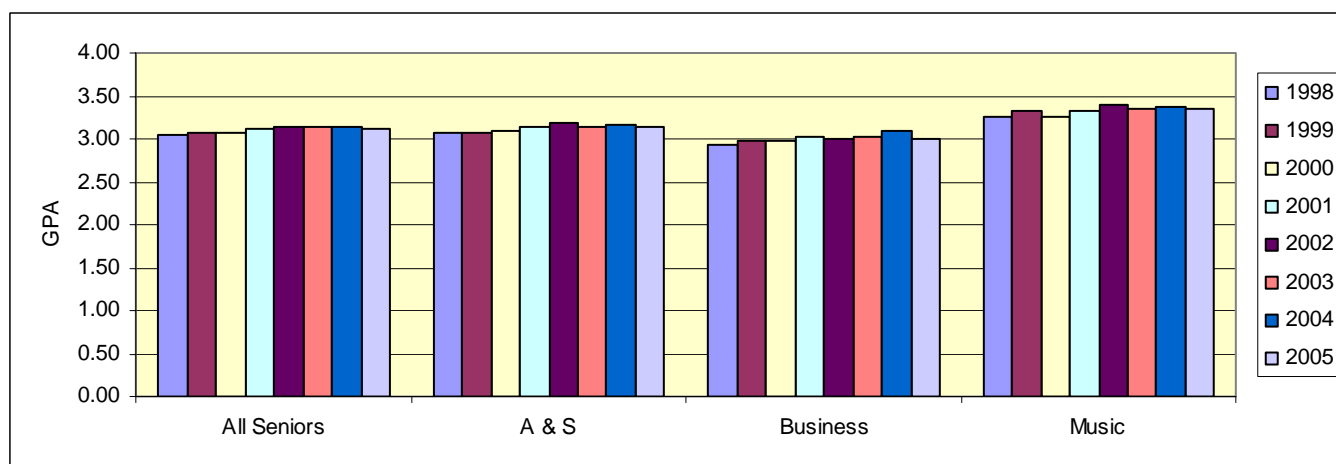
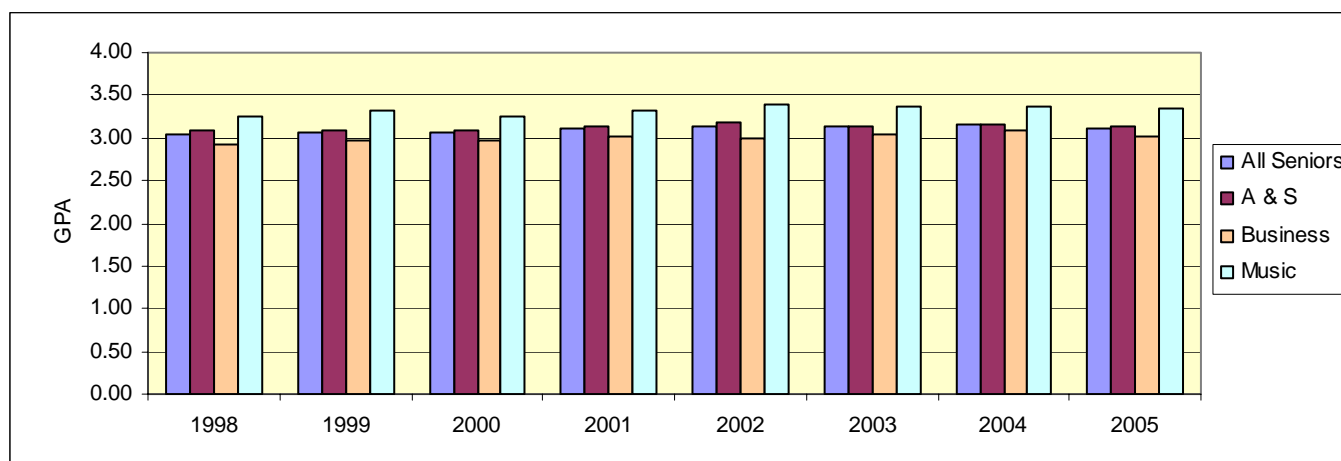
# Age Distribution (Fall 2005)



## Average Senior GPA's (Historical)

(Spring Semester)	1998	1999	2000	2001	2002	2003	2004	2005
All Seniors	3.05	3.07	3.07	3.11	3.14	3.13	3.15	3.12
Arts & Sciences	3.08	3.08	3.09	3.13	3.18	3.13	3.16	3.14
Business	2.92	2.97	2.98	3.02	2.99	3.03	3.09	3.01
Music	3.26	3.33	3.26	3.33	3.39	3.36	3.37	3.35

Spring 2005	All seniors	A & S	Business	Music
95th Percentile (Top 5%)	3.92	3.93	3.85	3.98
90th Percentile (Top 10%)	3.79	3.84	3.75	3.91
80th Percentile (Top 1/5)	3.61	3.66	3.52	3.75
75th Percentile (Top 1/4)	3.53	3.55	3.40	3.61
67th Percentile (Top 1/3)	3.42	3.44	3.25	3.56
60th Percentile (Top 40%)	3.31	3.33	3.14	3.50
50th Percentile (Top 1/2, median)	3.15	3.19	3.01	3.41
40th Percentile	3.01	3.03	2.83	3.32
25th Percentile	2.74	2.79	2.57	3.08



## Class Statistics

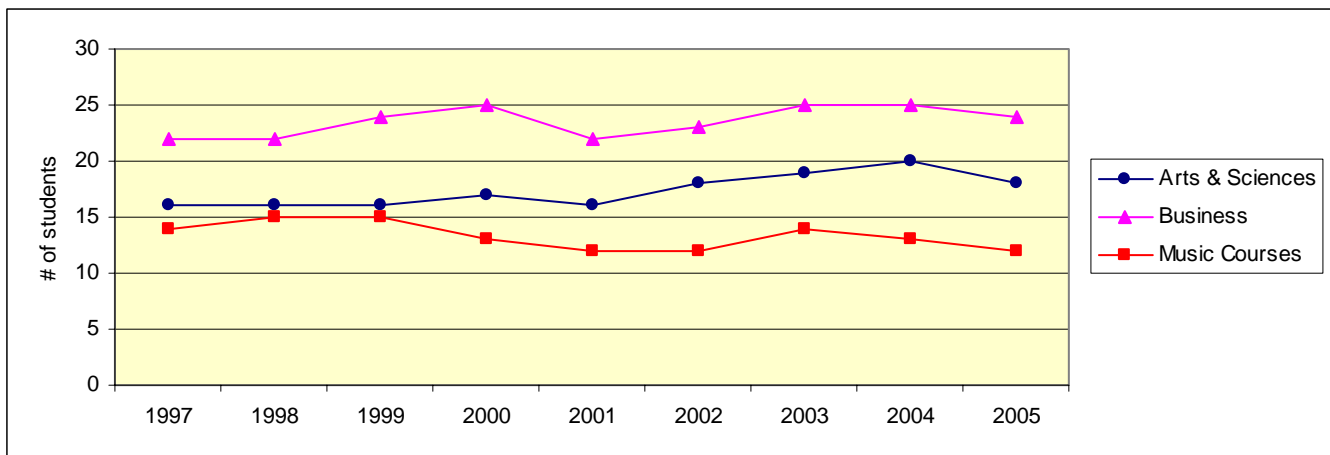
### Average Class Size - Undergraduate (Fall 2005)

	Lower Level	Upper Level	Combined
Arts & Sciences	23	13	18
Education	23	9	12
Humanities	19	13	17
Natural Sciences	27	10	19
Social Sciences	28	17	23
Business	26	23	24
Music Courses	12	11	12
Music Ensembles	16	17	17
Applied Music	3	2	3

Independent Study is excluded from the above. The number of Independent Study sections across all schools = 71.

### Average Class Size - Undergraduate (Historical)

	1997	1998	1999	2000	2001	2002	2003	2004	2005
Arts & Sciences	16	16	16	17	16	18	19	20	18
Education	13	14	12	14	13	12	15	13	12
Humanities	14	16	15	17	15	16	17	17	17
Natural Sciences	17	18	18	18	17	18	20	22	19
Social Sciences	18	18	17	21	19	22	22	24	23
Business	22	22	24	25	22	23	25	25	24
Music Courses	14	15	15	13	12	12	14	13	12
Music Ensembles	14	15	15	17	18	16	17	17	17
Applied Music	2	2	2	3	2	2	2	2	3



## **STUDENT LIFE**

### **Athletics**

#### **Intercollegiate Athletics**

Stetson is a member of the National Collegiate Athletic Association, and both men's and women's teams compete on a Division I level. Hatter basketball and baseball teams play national schedules and have achieved ranking as major powers.

##### **Men's Teams**

Baseball  
Basketball  
Crew  
Cross Country  
Golf  
Soccer  
Tennis

##### **Women's Teams**

Basketball  
Crew  
Cross Country  
Golf  
Soccer  
Softball  
Tennis  
Volleyball

#### **Intramural Program**

The Intramural Program offers young men and women the opportunity to manage, officiate, direct and participate in physical activities with the conviction that this participation will promote stability, coordination, sportsmanship, and a sense of leadership which will touch all aspects of their lives. The following sports are available to both men and women:

Basketball  
Bowling  
Darts  
Flag Football

Indoor Volleyball  
Kickball  
Outdoor Soccer  
Sand Volleyball

Softball  
Swimming  
Table Tennis  
Water Polo (Inner tube)

#### **Organizations and Clubs**

Stetson has many organizations open to all students, affording a variety of activity. Membership in some organizations is based upon special interests or academic achievement; others are primarily social.

#### **Social Organizations**

##### **Social Sororities**

Alpha Chi Omega  
Alpha Kappa Alpha  
Alpha Xi Delta  
Delta Delta Delta  
Pi Beta Phi  
Zeta Tau Alpha

##### **Social Fraternities**

Alpha Phi Alpha  
Delta Sigma Phi  
Lambda Chi Alpha  
Phi Sigma Kappa  
Pi Kappa Phi  
Sigma Nu  
Sigma Phi Epsilon

## **Honorary Organizations**

Alpha Kappa Delta (Sociology)  
Beta Alpha Psi  
Beta Beta Beta (Biology)  
Delta Phi Alpha (German)  
Gamma Sigma Epsilon (Chemistry)  
Gamma Theta Upsilon (Geology)  
Lambda Pi Eta  
Mortar Board  
Omicron Delta Epsilon  
Omicron Delta Kappa (Leadership)  
Order of Omega  
Phi Alpha Delta (Pre-Law)  
Phi Alpha Theta (History)

Phi Beta Kappa (General)  
Phi Eta Sigma  
Phi Theta Kappa Alumni  
Pi Delta Phi (French)  
Pi Kappa Delta  
Pi Sigma Alpha (Political Science)  
Psi Chi (Psychology)  
Rho Lambda  
Sigma Delta Pi (Spanish)  
Sigma Pi Sigma (Physics)  
Theta Alpha Kappa (Religious Studies)  
Theta Alpha Phi (Theatre)

## **Academically Related Organizations**

*College of Arts & Sciences*  
American Medical Student Association  
German Club  
Philosophy  
Society of Physics Students  
Stetson Russian Club  
Student Affiliates of the American Chemical Society

### *Education Program*

Chi Sigma Iota (Counseling)  
Florida Future Educators of America  
Kappa Delta Pi

### *School of Business*

Alpha Kappa Psi  
American Marketing Association  
Association for Computing Machinery  
Graduate Business Society

### *School of Music*

American Choral Directors Association  
Collegiate Music Educators Conference  
Phi Mu Alpha Sinfonia  
Sigma Alpha Iota  
Pi Kappa Lambda

## **Religious Organizations**

Baptist Collegiate Ministry  
Canterbury House  
Catholic Campus Ministry  
Chi Alpha Christian Fellowship  
Fellowship of Christian Athletes  
Intervarsity Christian Fellowship

Jewish Student Organization  
Latter-Day Saint Student Association  
Muslim Student Association  
Stetson Christian Fellowship  
Wesley House  
Young Life

## **Service Organizations**

Best Buddies  
C.A.U.S.E.  
Circle K International

Habitat for Humanity  
Into the Streets  
Providing Animals with Service

Roots and Shoots  
Rotaract Club

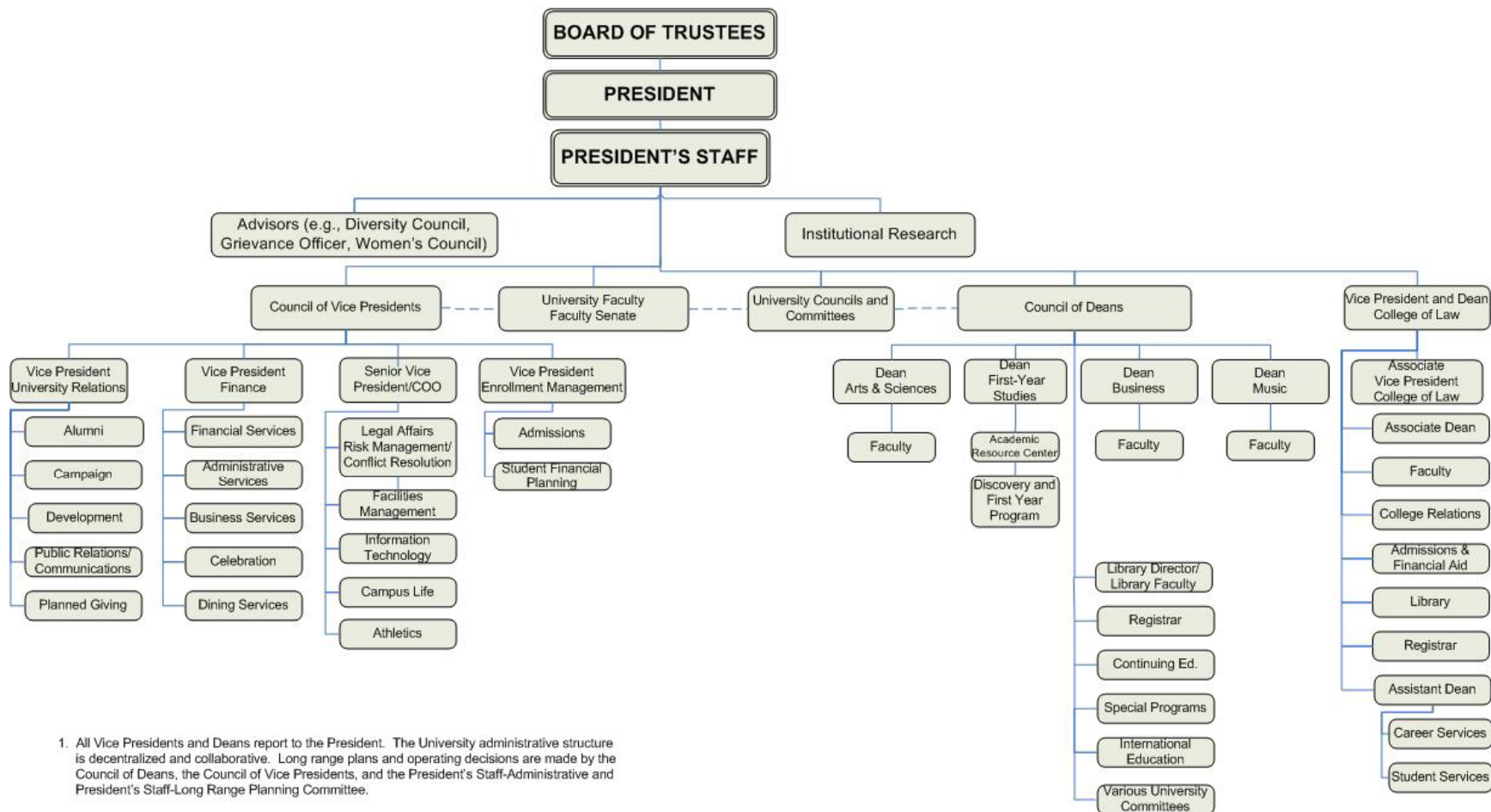
## **Special Interest Organizations**

Aikido Club	Frame Throwers	Numbered as Red
Asian Student Association	Green Hat Media	O.S.A.P.E.
Assoc.of Disability Advocates	Hip-Hop Hatter Dance Team	PARSEC (Astronomy Club)
Black Student Association	H.O.L.A. (Latin American)	QED Club
Caribbean Club	Impact	STAND Coalition - Students
Club Bridge	Indian Student Association	Taking Action Now: Darfur
College Bowl Team	International Student Organization	Stetson Gospel Choir
College Democrats	Kaleidoscope	Student Alumni Association
College Republicans	MedEx	Student Ambassadors
Dance Arts Society	Model United Nations	Stetson Patriots Association
Dance Team	Model US Senate	Ultimate Players Club
Film Society		

## **Campus Life Organizations**

BAACHUS/GAMMA	Multicultural Student Council (MSC)
Council for Student Activities (CSA)	Panhellenic Council (PH)
Family Weekend	Student Advisory Board
FOCUS	Student Government Association (SGA)
Greenfeather	The Reporter (Newspaper)
Interfraternity Council (IFC)	Touchstone Literary Magazine / Poetry
	At An Uncouth Hour

# STETSON UNIVERSITY ORGANIZATIONAL CHART 2005-06



1. All Vice Presidents and Deans report to the President. The University administrative structure is decentralized and collaborative. Long range plans and operating decisions are made by the Council of Deans, the Council of Vice Presidents, and the President's Staff-Administrative and President's Staff-Long Range Planning Committee.
2. The Senior Vice President and Chief Operating Officer represents the President in his absence and consults directly with all Vice Presidents and Deans as needed.
3. While the College of Law is an integral part of the University, its geographic location and status as a graduate professional school pragmatically make it a more autonomous unit within the University administrative structure.
4. The Director of Athletics makes regular reports to the President and President's Staff.



## Faculty

### Full-time Faculty - by Rank, Gender, Ethnicity

	NR/ Alien		Black, non-Hispanic		Asian / Pacific Islander		Hispanic		White, non-Hispanic		Other	Total
	Men	Wome	Men	Wome	Men	Wome	Men	Wome	Men	Wome		

As of 10/1/95

Professors			1						41	6		48
Associate professors					1		1		36	19		57
Assistant professors				3	1	3		3	28	16		54
Instructors/Lecturers						1			3	5		9
TOTAL			1	3	2	4	1	3	108	46		168

As of 10/1/97

Professors			1		1				38	6		46
Associate professors			1			1	2	2	32	25		63
Assistant professors				3	1	2			25	17		48
Instructors/Lecturers										1		1
TOTAL			2	3	2	3	2	2	95	49		158

As of 11/1/99

Professors			1				1		42	10		54
Associate professors			1	1		1		2	39	20		64
Assistant professors			1	3	1	1	1		13	20		40
Instructors/Lecturers								3	4	9		16
Other faculty			1						3	4		8
TOTAL			4	4	1	2	2	5	101	63		182

As of 11/1/01

Professors			1						47	12		60
Associate professors			1	3		2		2	35	18		61
Assistant professors		1	3	1	1		3		12	23		44
Instructors/Lecturers							1	3	7	12		23
Other faculty					1				5	2		8
TOTAL		1	5	4	2	2	4	5	106	67		196

As of 11/1/03

Professors			1						51	14		66
Associate professors			1	4		2	1	2	30	21		61
Assistant professors			2	1	2		1		18	19	1	44
Instructors/Lecturers								3	6	6		15
Other faculty	1				1				5	1		8
TOTAL	1		4	5	3	2	2	5	110	61	1	194

Source: IPEDS Fall Staff Survey

## Percent of Full-Time teaching Faculty with Terminal Degrees - Historical

(includes Sabbaticals/Leaves)

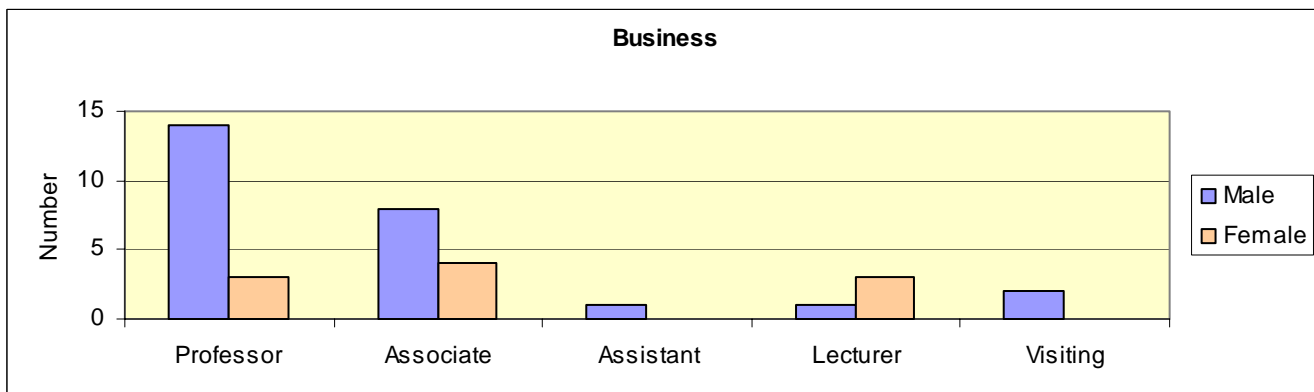
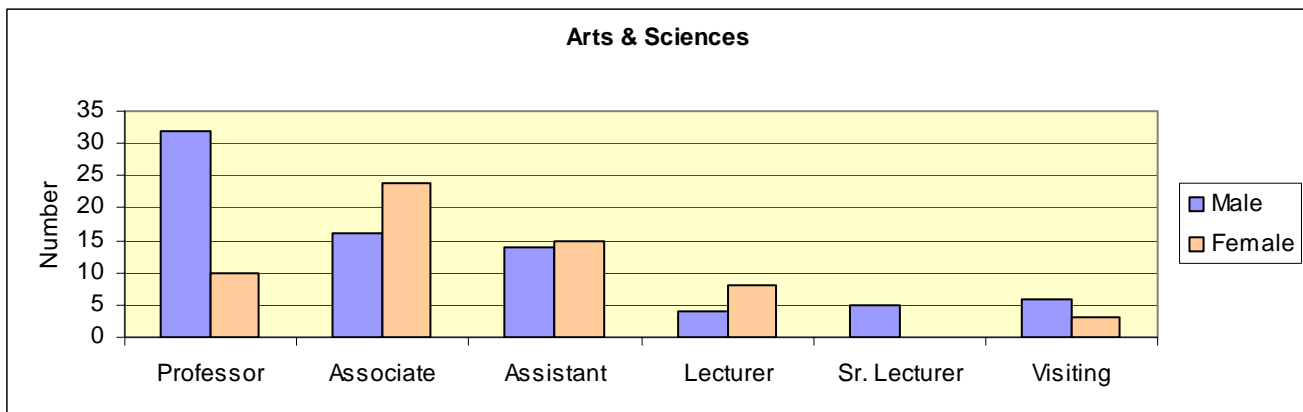
	1998	1999	2000	2001	2002	2003	2004	2005
Professors	100%	100%	100%	100%	100%	100%	100%	100%
Associate Professors	100%	98%	98%	98%	97%	97%	96%	97%
Assistant Professors	90%	80%	83%	84%	84%	82%	81%	85%
Instructors/Lecturers/Visiting	44%	50%	51%	54%	45%	52%	48%	76%
Senior Lecturer					100%	100%	100%	100%
<b>TOTAL</b>	<b>90%</b>	<b>88%</b>	<b>87%</b>	<b>88%</b>	<b>88%</b>	<b>90%</b>	<b>89%</b>	<b>92%</b>

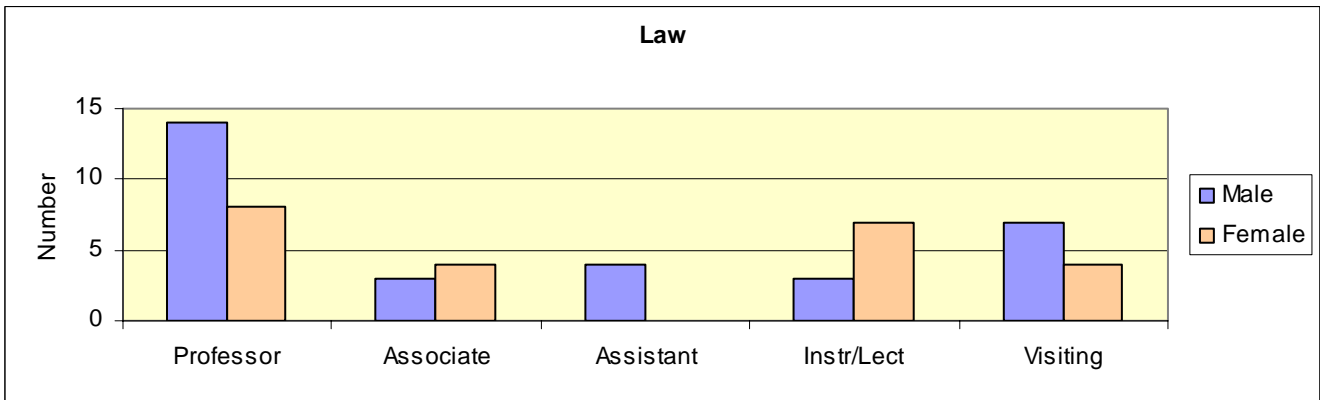
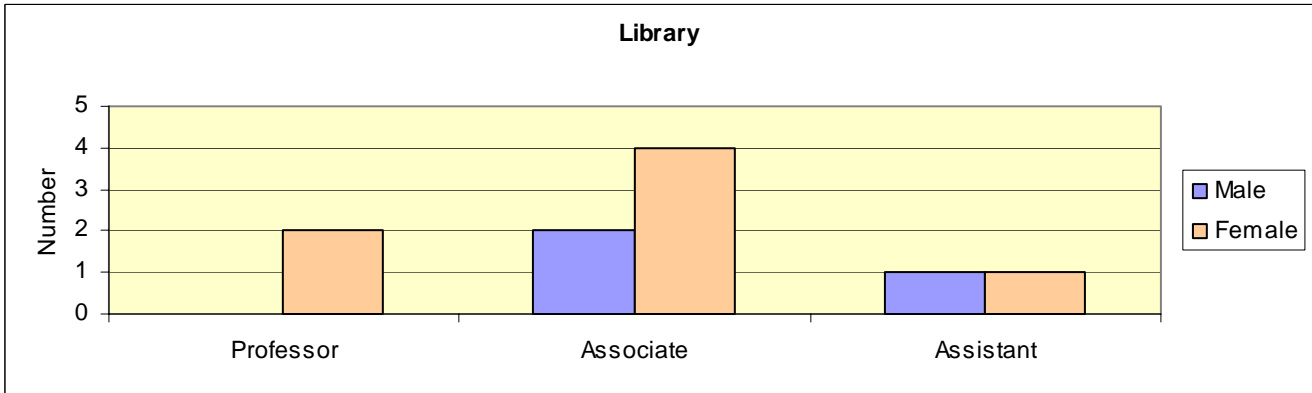
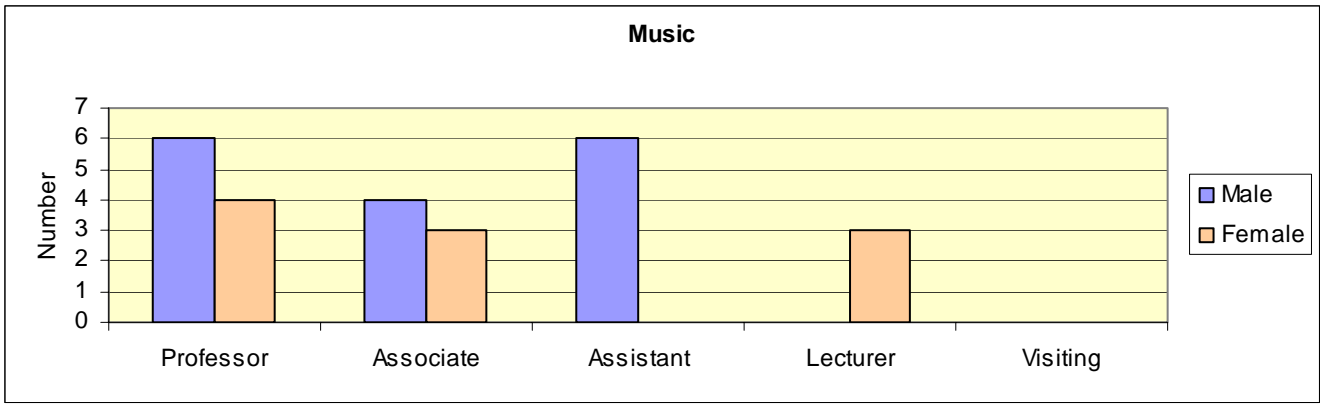
\*Not available

## Full-time Faculty By School and Gender (Fall 2005)

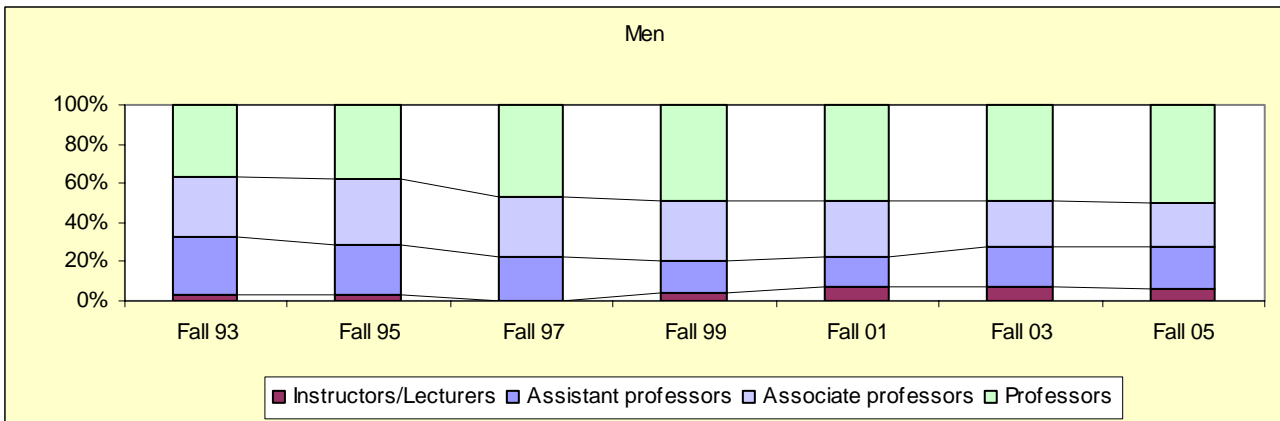
(includes Sabbaticals/Leaves)

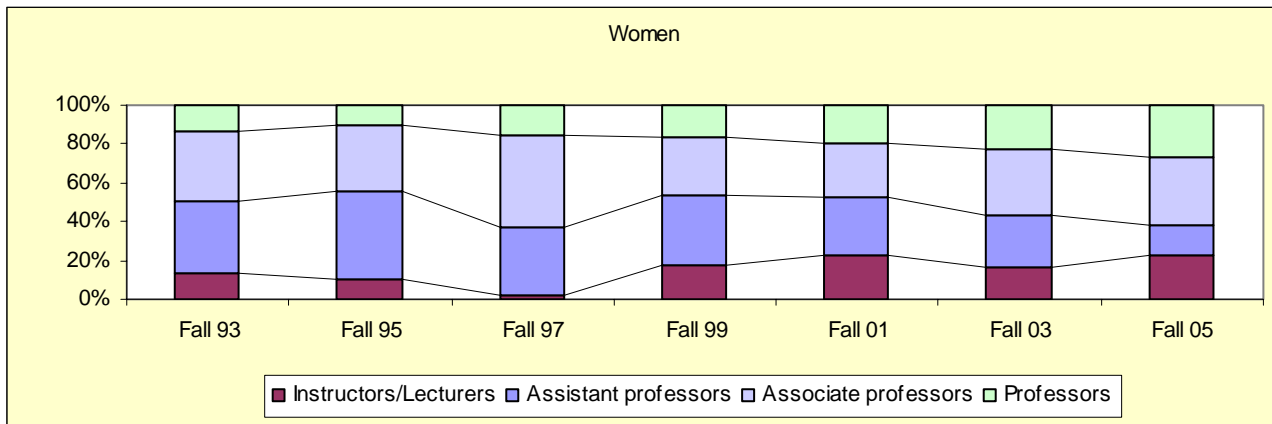
	Arts & Science		Business		Music		Library		Law	
	Male	Female	Male	Female	Male	Female	Male	Female	Male	Female
Professor	32	10	14	3	6	4	0	2	14	8
Associate	16	24	8	4	4	3	2	4	3	4
Assistant	14	15	1	0	6	0	1	1	4	0
Instructor									2	7
Lecturer	4	8	1	3	0	3			1	0
Sr. Lecturer	5	0								
Visiting	6	3	2	0					7	4
<b>TOTAL</b>	<b>77</b>	<b>60</b>	<b>26</b>	<b>10</b>	<b>16</b>	<b>10</b>	<b>3</b>	<b>7</b>	<b>31</b>	<b>23</b>





## Full-Time Instructional Faculty by Gender - Historical





Source: IPEDS Faculty Salary Survey

### Student-Faculty Ratio

The table below shows the ratio of full-time equivalent undergraduate students to full-time equivalent instructional faculty for the fall semester.

Fall 1998	Fall 1999	Fall 2000	Fall 2001	Fall 2002	Fall 2003	Fall 2004	Fall 2005
10.5 to 1	10.5 to 1	10.4 to 1	10.3 to 1	10.7 to 1	11.1 to 1	11.7 to 1	11.7 to 1

\*not available

### Staff

(Including DeLand, Celebration and Law School)

	Fall 2002		Fall 2003		Fall 2004	
	Full-time	Part-time	Full-time	Part-time	Full-time	Part-time
Instruction	239	103	236	109	231	113
Executive	111	2	110	1	114	1
Other Professional	138	10	147	15	134	14
Technical, paraprofessional	17	2	10		5	1
Clerical and secretarial	121	6	112	7	139	16
Skilled crafts	13		10		5	16
Service/Maintenance	93	6	91	12	111	
<b>TOTAL</b>	<b>732</b>	<b>129</b>	<b>716</b>	<b>144</b>	<b>739</b>	<b>161</b>
	<b>861</b>		<b>860</b>		<b>900</b>	

Source: IPEDS: EAP - Employees by Assigned position report or Staff Survey

## Presidents of Stetson University

H. Douglas Lee	1987- Present
Pope A. Duncan	1977 – 1987
George R. Borders	(Acting) July, 1976 to July, 1977
John E. Johns	1969 – 1976 (Acting, June, 1969 to April, 1970)
Paul F. Geren	1967 – 1969
J. Ollie Edmunds	1948 – 1967
Harry C. Garwood (acting)	September to December, 1947
William Sims Allen	1934 – 1947
Charles S. Farriss (acting)	January to August, 1934
Lincoln Hulley	1904 – 1934
Charles S. Farriss (acting)	September 1903 to September 1904
Warren S. Gordis (acting)	September, 1895 to June, 1896
John F. Forbes	1885 – 1903

## Board of Trustees (2005-2006)

Robert G. Beatty Miami, Florida	Franklin T. Gaylord Eustis, Florida
Richard Beauchamp Boca Grande, Florida	Dolly Hand Belle Glade, Florida
Peter Brockway Boca Raton, Florida	Mark C. Hollis Lakeland, Florida
Cynthia R. Brown Daytona Beach, Florida	R. Dean Hollis Omaha, Nebraska
J. Hyatt Brown Daytona Beach, Florida	Jill Jinks Atlanta, Georgia
S. Sammy Cacciatore, Jr. Melbourne, Florida	Hal Kantor Orlando, Florida
Max Cleland Atlanta, Georgia	Diana Lee Kunze Brecksville, Ohio (Chair, Arts and Sciences Board)
Nelson Clemmens Goshen, Kentucky (Chair, Business Board)	Joseph W. Landers, Jr. Tallahassee, Florida (Board Chair)
Nestor De Armas Winter Park, Florida	L. Patrick Lane DeLand, Florida (Chair, Music Board)
Diane Disney State College, Pennsylvania	

H. Douglas Lee  
DeLand, Florida

Carroll E. Lewis  
Ocala, Florida

Christine E. Lynn  
Boca Raton, Florida

Richard A. McMahan  
DeLand, Florida

Jane Edmunds Novak  
Ponte Vedra Beach, Florida

Harlan Paul  
DeLand, Florida

Luis Prats  
Tampa, Florida

Billy Raley  
Lake Mary, Florida

Terry J. Rhodes  
Tallahassee, Florida

David B. Rinker  
West Palm Beach, Florida

Marsha Rydberg  
Tampa, Florida  
(Chair, Law Board)

David M. Strickland  
Jacksonville, Florida

Arthur P. Sullivan  
Palm Beach, Florida

### **Officers, Trustee Emeriti**

Mack N. Cleveland, Jr.  
Sanford, Florida  
(General Counsel Emeritus)

Dennis C. McNamara, Sr.  
Orlando, Florida

Thomas F. Wands  
DeLand, Florida

B. Frank Wheeler, Jr.  
Oviedo, Florida

Patricia M. Wilson  
Frostproof, Florida

## **Academic and Administrative Officers**

H. Douglas Lee  
*President*

James R. Beasley  
*Senior Vice President and Chief Operating Officer*

Linda P. Davis  
*Vice President for University Relations*

Sally Dowling  
*Vice President for Finance*

Deborah Thompson  
*Vice President for Enrollment Management*

Darby Dickerson  
*Vice President & Dean of the College of Law*

Grady Ballenger  
*Dean of the College of Arts and Sciences*

Leonard L. Nance  
*Dean of First Year Studies*

James H. Scheiner  
*Dean of the School of Business Administration*

James E. Woodward  
*Dean of the School of Music and  
Chair of the Council of Deans*

## Academic Departments / Programs (2005-06)

### College of Arts & Sciences

#### **Department**

American Studies  
Art  
Biology  
Chemistry  
Communication Studies and Theatre Arts  
Counselor Education  
  
Economics  
English  
Geography & Environmental Science  
History  
Integrative Health Sciences/Sport Management  
Mathematics and Computer Science  
Modern Languages & Literature  
Philosophy  
Physics  
Political Science  
Psychology  
Religious Studies  
  
Sociology  
Teacher Education

#### **Chairs**

Paul Croce  
Roberta Favis  
Michael King  
Peter Hauck  
Kenneth McCoy  
Lynn Landis Long (Larry Rosen, Spring  
sabbatical replacement)\*  
Neal Long  
Thomas Farrell  
Bruce C. Bradford  
Paul Steeves (Venzke sabbatical replacement)\*  
Michele Skelton  
Lisa Coulter  
Richard Ferland  
Ronald Hall  
George Glander  
Anne Hallum  
Richard Kindred  
Mitchell Reddish (Kandy Queen-Sutherland,  
Fall sabbatical replacement)  
Diane Everett  
Adrienne Perry

#### **Special Programs**

Africana Studies  
Applied Ethics  
Aquatic and Marine Biology  
Biochemistry  
COSM\*S  
Digital Arts  
Environmental Sciences  
General Studies  
Health Care Issues  
Honors Program  
Humanities  
Institute for Christian Ethics  
International Studies  
Journalism  
Latin American Studies  
Russian Studies  
Stetson Institute for Social Research  
Women and Gender Studies

#### **Chair / Coordinator / Director**

Shawnrece Miller  
Ronald Hall  
Melissa Gibbs  
Harry Price  
Terry Farrell  
Matt Roberts  
Tony Abbott  
John Pearson  
Michele Skelton  
Michael Denner  
William Wayne Dickson  
Dixon Sutherland  
T. Wayne Bailey  
Michael W. McFarland  
Robert Sitler  
Eugene Huskey  
John K. Schorr  
Yves Clemmen



## **Advising Committees**

First-Year English  
Pre-Health  
Pre-Law  
Undergraduate Teacher Education  
Grant and Fellowships  
Discovery  
Pre-Engineering

Megan O'Neill  
Michael King  
T. Wayne Bailey  
Elizabeth Dershimer  
Karen Kaivola  
Leonard Nance  
Kevin Riggs

## **School of Business Administration**

### **Department**

Accounting  
Decision and Information Sciences  
Finance  
Management  
Marketing

### **Chairs**

Judson P. Stryker  
Fred K. Augustine, Jr.  
Lawrence J. Belcher  
Monique Forte  
Stephen T. Barnett

### **Special Programs**

Family Business Center  
Roland George Investments Program  
Joseph C. Prince Entrepreneurial Program  
Applied Statistics  
Director of Graduate Business Programs

### **Chair / Coordinator / Director**

Gregory K. McCann  
Lawrence J. Belcher  
William A. Andrews  
Betty M. Thorne  
Frank A. DeZoort

\*Chair's duties will be distributed among dept. faculty, but the person listed here will serve as the primary contact and will attend Chair's meetings.