

# TABLE OF CONTENTS

INTRODUCTION .....	3
GENERAL INFORMATION .....	5
Statement of Institutional Purpose .....	5
I. Educational Mission .....	5
II. Values and Vision .....	5
III. Heritage and Character .....	6
Accreditation.....	7
Historical Timeline .....	7
KEY INDICATORS .....	11
High School Class Rank of New Freshmen .....	11
Mean High School GPA .....	11
Decision to Attend Stetson .....	12
Student Retention Analysis.....	13
Graduation Rates.....	14
Senior Survey Statistics - Postgraduate Plans.....	15
Primary Activity After Graduation .....	15
Degree Desired .....	15
Subject Area of Planned Degree .....	16
Long Term Career Plans .....	16
Results from Alumni/ae Surveys .....	17
Tuition and Fees .....	19
Stetson - Historical .....	19
2003 - 04 Reference Schools Comparison - Tuition and Fees .....	19
Financial Information .....	20
Endowment - Market Value.....	20
Endowment - Reference Schools.....	20
Annual Budget.....	21
Expenditures – Fiscal Year 2002.....	21
Alumni Giving Profile .....	22
Student Financial Aid .....	22
Scholarships/Grants (2003-2004).....	22
Total Aid and Self Help (2003-2004).....	22
ACADEMIC PROGRAMS .....	23
Degrees and Programs Offered (2003-04).....	23
College of Arts and Sciences .....	23
School of Business Administration .....	23
School of Music .....	23
Graduate.....	24
Enrollment by Major - Undergraduate (Fall 2003).....	25
Enrollment by Minor - Undergraduate (Fall 2003) .....	26
Enrollment by Major - Graduate (Fall 2003).....	26
Enrollment by Major - Undergraduate (Historical).....	27
Degrees Awarded by Major - Undergraduate (Historical) .....	29
Degrees Awarded - by Degree Type (Historical).....	30
College of Law.....	30
STUDENT INFORMATION .....	32
Admissions .....	32
High School Class Rank - New Freshman .....	32

SAT / ACT Scores .....	32
Range of SAT / ACT Scores .....	32
First-time Freshmen & Transfers.....	33
Enrollment .....	35
Headcount, Fall Semester (Historical).....	35
Enrollment by Gender (Historical) .....	36
Headcount, Fall Semester (Historical - 1954 to 2002) .....	36
College or School & Gender (Fall 2003).....	38
Class Standing - Undergraduate (Fall 2003) .....	39
Class Standings - Undergraduate (Historical) .....	39
Ethnicity (Fall 2003).....	40
Enrollment By Ethnicity - Undergraduate (Historical) .....	40
ALANA Enrollment - Undergraduate (Historical).....	40
International / Non-Resident Students Home country - Undergraduate (Fall 2003).....	41
Number of Foreign Countries represented (Historical).....	41
Enrollment by Home State - Undergraduate (Fall 2003).....	42
Enrollment by Home State - Undergraduate (Historical).....	43
Undergraduate Enrollment by Florida County (Historical).....	44
Enrollment by Religious Affiliation - Undergraduate (Fall 2003).....	44
Age Distribution (Fall 2003) .....	45
Average Senior GPA's (Historical).....	46
Class Statistics .....	47
Average Class Size - Undergraduate (Fall 2003) .....	47
Average Class Size - Undergraduate (Historical).....	47
<b>STUDENT LIFE.....</b>	<b>48</b>
Athletics.....	48
Intercollegiate Athletics.....	48
Intramural Program.....	48
Organizations and Clubs.....	48
Social Organizations.....	48
Honorary Organizations.....	48
Academically Related Organizations .....	49
Religious Organizations.....	49
Special Interest Organizations .....	49
Service Organizations.....	49
Campus Life Organizations .....	50
<b>ADMINISTRATION, FACULTY AND STAFF.....</b>	<b>52</b>
2003-04 Organizational Chart .....	52
Faculty .....	53
Full-time Faculty - by Rank, Gender, Ethnicity .....	53
Percent of Full-Time teaching Faculty with Terminal Degrees - Historical .....	54
Full-time Faculty By School and Gender (Fall 2003) .....	54
Full-time Instructional Faculty by Gender - Historical .....	56
Faculty-Student Ratio .....	56
DeLand Full-time Faculty Growth (1987-88 to 1999-00).....	56
Presidents of Stetson University .....	57
Board of Trustees (2003-2004).....	57
Academic and Administrative Officers .....	59
Academic Departments / Programs .....	60

## INTRODUCTION

Dear Stetson Community:

Much of the planning and evaluation necessary to improve the effectiveness of the University begins with an understanding of basic institutional facts. The *Stetson University Fact Book* is prepared annually by the Institutional Research Office to provide a better understanding of a variety of issues at Stetson. By sharing and discussing this information, members of the Stetson community are able to more effectively contribute to the planning processes of the University. As you use this information, please let us know how future editions can be improved.

Dr. John M. Tichenor  
Director of Institutional Research



# GENERAL INFORMATION

## Statement of Institutional Purpose Approved by the Board of Trustees, February 4, 2000

### I. Educational Mission

Our mission at Stetson University is to provide an excellent education in a creative community where learning and values meet, and to foster in students the qualities of mind and heart that will prepare them to reach their full potential as informed citizens of local communities and the world.

At Stetson, the art of teaching is practiced through programs solidly grounded in a tradition of liberal learning that stimulates critical thinking, imaginative inquiry, creative expression, and lively intellectual debate. The art of learning is enhanced through small interactive classes, close student-faculty alliances, and collaborative approaches that provide the foundation for rewarding careers and advanced study in selective graduate and professional programs. We embrace diverse methodologies to foster effective communication, information and technological literacy, and aesthetic appreciation. We encourage the development of informed convictions, independent judgment, and lifelong commitments to learning that are characteristic features of the enlightened citizen. In bringing together learning and values, the University encourages all of its members to demonstrate personal integrity; to develop an appreciation for the spiritual dimension of life; to embrace leadership in an increasingly complex, interdependent, and technological world; and to commit to active forms of social responsibility.

### II. Values and Vision

From its founding, Stetson University has affirmed the importance of spiritual life and the quest for truth in its educational mission. The University motto, *Pro Deo et Veritate* (“For God and Truth”), is a symbol of this commitment, and it expresses our determination to integrate the pursuit of a liberal education with the search for meaning in our lives and in our communities.

Chartered as an independent and comprehensive university, Stetson has had an historical relationship with the Christian community and the Baptist denominations. That relationship has shaped our commitment to build an inclusive community. Today, the University includes persons from diverse religious, ethnic, cultural, economic, and intellectual backgrounds. It is thus from varying perspectives that members of the University community have joined together to affirm collectively

- the centrality of knowledge, examined ideas, and independent judgment in the life of an educated person;
- the inherent dignity, worth, and equality of all persons;
- the importance of community in human life;
- the role of religious and spiritual quests for meaning in human experience;
- the value of diverse persons and differing ideas in an educational community;
- the responsibility we share to work toward social justice;
- the necessity for decisions to be guided by ethics and social responsibility; and
- the obligation of individuals and communities to act as responsible stewards of the natural environment.

In our curriculum and co-curricular activities, then, we aim to infuse traditional liberal education with

the values of religious and spiritual life, ethical decision-making, human diversity and commonality, gender equity, community service, and environmental responsibility. We aspire to develop distinctive, innovative, and interdisciplinary undergraduate and graduate programs that are centered on vigorous intellectual inquiry, informed by these values, increasingly global in perspective, and worthy of local and national recognition.

### **III. Heritage and Character**

Florida's first private university, Stetson University was founded in 1883 by Henry A. DeLand, a New York philanthropist, as DeLand Academy. In 1887, the Legislature of the State of Florida enacted the Charter of DeLand University as an independent institution of higher learning. The university's name was changed in 1889 to honor John B. Stetson, the nationally-known hat manufacturer who gave generously of his time and means to advance the quality and reputation of the institution, and who served, with Mr. DeLand and others, as a founding trustee of the University. The first charter stated that the objective of the University should be "to promote the general interests of education, and to qualify its students to engage in the learned professions or other employments of society, and to discharge honorably and usefully the various duties of life." Stetson's first president, Dr. John F. Forbes, clearly described the commitment to teaching that has been a hallmark of the University throughout its history:

Buildings, libraries and apparatus are good and give added power, but the vital contact of students with a vigorous and stimulating mind and heart--this is the sine qua non of a successful education...The most important thing is to find men and women of large heart and mind, apt to teach and full of enthusiasm and stimulating power...to develop in the student the habit of independent judgment--of investigating statements and principles for oneself, and thus for oneself discover their truth or falsity.

Today, Stetson University is a non-sectarian, comprehensive, private university composed of individually strong undergraduate programs in various colleges and schools, and a selected group of academically distinctive graduate, professional, and continuing education programs. We seek academically talented individuals with leadership potential and records of personal growth and community service. We promote and support scholarly and creative activity among students, faculty, and staff as a means to enhance learning, teaching, and professional development, and as a contribution to the broader base of knowledge.

## Accreditation

- ◆ Accredited by the Commission on Colleges of the Southern Association of Colleges and Schools (1866 Southern Lane, Decatur, Georgia 30033-4097, Telephone (404) 679-4501) to award the Bachelor's, Master's and Specialist in Education degrees in the College of Arts and Sciences; Bachelor's degrees in the School of Music; Bachelor's and Master's degrees in the School of Business Administration; and the Juris Doctor and the Master of Laws degree in the College of Law.
- ◆ AACSB International – The Association to Advance Collegiate Schools of Business
- ◆ American Bar Association
- ◆ American Chemical Society
- ◆ Council for Accreditation of Counseling and Related Educational Programs
- ◆ National Association of Schools of Music
- ◆ National Council for Accreditation of Teacher Education

## Historical Timeline

- 1883 Henry A. DeLand founds the DeLand Academy, November 5, originally housed in the First Baptist Church.
- 1884 DeLand Hall is completed, the first building in Florida to be continuously used for higher education.
- 1885 The institution becomes DeLand College, and John Franklin Forbes is named the first president. An affiliation with the Florida Baptist Convention is achieved.
- 1886 Stetson Hall (oldest residence hall in Florida) is occupied.
- 1887 The Florida legislature grants the charter to DeLand University defining a self-perpetuating Board of Trustees to be three-fourths Baptists with the president also to be a Baptist.
- 1889 The name is changed to John B. Stetson University, and Mr. Stetson becomes chairman of the Board of Trustees.
- 1892 Elizabeth Hall is built by Mr. Stetson--the north and south wings are completed in 1897.
- 1898 The *Florida Times Union* calls Presentation Day, February 10, "the most memorable day in...higher education" in Florida. President William R. Harper of the University of Chicago addresses the gathering leading to an affiliation (May 17) with Chicago until 1908. The University receives the wings of Elizabeth Hall, the Monroe Health Museum, and \$100,000 endowment Forbes has collected. This latter makes the University no longer dependent upon the largess of any one person.
- 1900 College of Law is founded as first law school in Florida.
- 1902 Flagler Hall becomes home of Law and Technology.
- 1904 The colorful Lincoln Hulley becomes president.
- 1907 Efforts by Baptists to change charter fail; Florida Baptist Convention founds Columbia College.

- 1908 Sampson Hall is constructed as the University's library.
- 1919 With the closing of Columbia College, a new agreement, the "Hulley-Rogers Agreement," is made with the Florida Baptist Convention giving it a voice in choosing trustees.
- 1932 Stetson joins Southern Association of Colleges and Schools. Hulley resists this action believing Stetson does not need this endorsement.
- 1934 President Hulley dies, January 20. Charles S. Farriss is named acting president. In August, William Sims Allen becomes the third president of Stetson.
- 1938 Most remembered football game, Stetson beats Florida, 16-14.
- 1943 Low point of enrollment during World War II, 362. With war's end, enrollment booms to 2,554 in 1947.
- 1947 President Allen's poor health causes him to resign in September; Dean Harry Garwood is named acting president.
- 1948 J. Ollie Edmunds assumes presidency, January 1, welcomed by William Hugh McEniry, Acting Dean, and Fred (Bud) Dickinson, President of Student Association.
- 1954 The beautiful Commons Building burns at Christmas. Carlton Union Building succeeds it (1957). College of Law moves to St. Petersburg.
- 1960 Stetson becomes first white college in Florida to admit a black student, Cornelius Hunter.
- 1963 Ford Foundation challenge grant of \$1,500,000 is largest single grant to that date. Matching funds are secured.
- 1964 The duPont-Ball Library is dedicated.
- 1967 President Edmunds resigns and Paul F. Geren becomes president.
- 1969 President Geren resigns; the day before his resignation is to take effect, he is killed in an automobile accident.
- 1970 Vice President John Johns, after serving as acting president, following President Geren's death, becomes the sixth president.
- 1974 Edmunds Center is built as a field house and multi-purpose assembly hall.
- 1976 President Johns goes to Furman University as president, and George Borders becomes acting chief administrator.
- 1977 Pope A. Duncan becomes Stetson's seventh president.
- 1978 A program of renovation of older buildings is inaugurated. Acquisition of Gillespie Museum property begins a series of real estate purchases to redefine the south boundary of the campus. Position of provost is established.
- 1979 Ten-year \$50 million campaign begins. The university's first \$1 million gift is committed by Kenneth Kirchman, trustee alumnus. The campaign is successfully concluded in five years, 1984.
- 1982- 83 Centennial of the University is celebrated with year-long activities. Gilbert Lycan's *Stetson University: The First 100 Years* is published. Phi Beta Kappa, Gamma of Florida, is installed as first chapter in a private university in Florida. Roland George Investments Program is begun. In 1989 the Roland and Sarah George Institute for Applied Investments is funded by a bequest in the will of Sarah George.
- 1984 Chancellor J. Ollie Edmunds dies. Master of Accountancy added. College of Liberal Arts



becomes College of Arts & Sciences. School of Music adds Bachelor's degree in Musical Theatre.

- 1985 Stetson joins Trans America Athletic Conference and is a founding member of the women's New South Conference. The John T. Rosa bequest funds purchase of apartments at the College of Law. New Community School of the Arts is inaugurated.
- 1986 A master campus plan is developed.
- 1987 H. Douglas Lee, Executive Vice President, succeeds President Duncan as president and Duncan becomes Chancellor. The sorority houses are dedicated. A \$200 million fund campaign is approved. Hollis Leadership Development Program is funded. Major renovations begin at the College of Law.
- 1989 Griffith Hall, which houses admissions and financial aid, is completed. A master campus landscaping plan which begins the reforestation of Woodland Boulevard is approved.
- 1990 Law School team wins A.B.A. National Mock Trial Competition for second year in a row. The Lynn Center is purchased with a gift of \$3 million from E. M. Lynn, an alumnus. For the sixth year *U.S. News and World Report* ranks Stetson among the best comprehensive universities in the South. A new agreement is made with the Florida Baptist Convention reducing its role in Trustee nominations and reducing its financial support but continuing an affiliation.
- 1991 South African Archbishop Desmond Tutu, winner of the 1984 Nobel Peace prize, speaks out on global conflicts as the inaugural speaker of the James A. Stewart Lecture Series presented by Stetson's Institute for Christian Ethics. William M. and Nina B. Hollis Foundation Inc., makes a gift of \$4.5 million, \$4 million of which establishes a scholarship fund.
- 1992-93 In collaboration with Disney Development Company and the Osceola County School Board, Stetson plans a model school and teaching academy at Celebration. Former President Jimmy Carter gives the Stewart Lecture.
- 1993-94 The \$200 Million Campaign passes the \$106 million mark. A revised charter and by-laws reaffirm Stetson's identity as an independent institution. Baptist funding drops to \$17,000.
- 1994-95 Trustee Mark Hollis and his wife, Lynn, provide \$2.5 million toward the construction of a student activities center. The first School of Music Gala fills the 2,500-plus-seat Peabody Auditorium in Daytona Beach.
- 1995-96 In a message titled "On the Threshold of the 21st Century," Holocaust survivor, Nobel Peace Prize laureate and author Elie Wiesel presents the James A. Stewart Lecture. The College of Law is ranked first in the nation for its trial and appellate programs in the 1995 *U.S. News and World Report's* survey of graduate school programs. Stetson and the Florida Baptists terminate all formal and informal relationships. The endowment climbs to over \$80 million. In a formal inaugural ceremony, the Howard Thurman Program is established to integrate the works of scholars and community leaders to seek solutions to social, religious and ethnic problems.
- 1997-98 Named for Mark and Lynn Hollis of Lakeland, the \$4.3 million, 33,000-square-foot Hollis Center for fitness and recreation is dedicated.

1998-99 Celebrated author and observer of the national scene with more than 30 years in print and

broadcast journalism, Bill Moyers delivers the 1998 James A. Stewart Lecture, addressing the topic “Ethics for a New Millennium.” Six task forces are established within the university's newly formed Values Council as a means to develop strategic plans for implementing Stetson’s commitment to its core values. The council's activities and plans underscore the university’s mission to be an inclusive community, recognizing the dignity, worth and equality of all people. The Stetson College of Law opens a \$8.5 million Law Library and Legal Information Center that is one of the most technologically-advanced facilities of its kind in the Southeast, housing a 370,000-volume library collection and hundreds of network connections to access online legal resources.

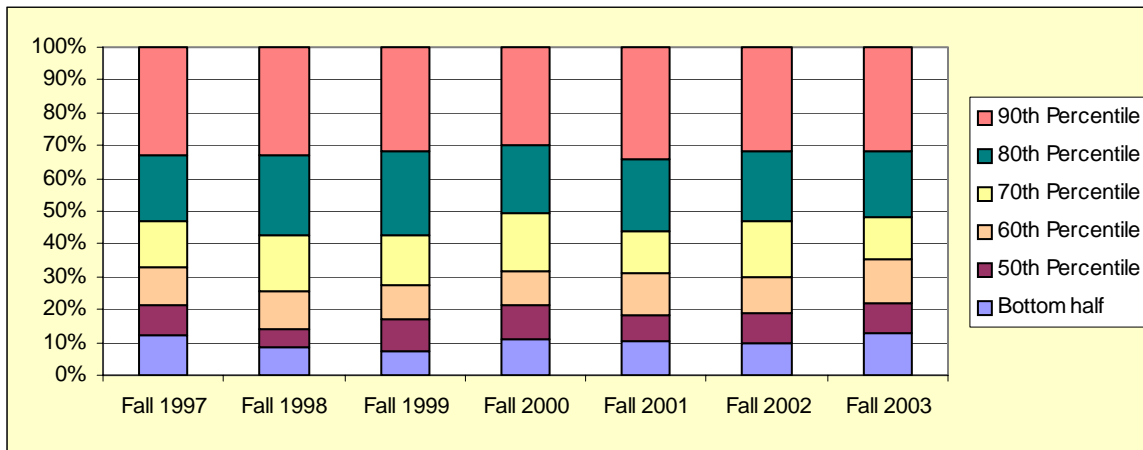
- 1999 The opening of Melching Field at Conrad Park – a \$4.5 million state-of-the-art baseball stadium funded through a collaboration with Stetson, the City of DeLand and the DeLand Sports Redevelopment Association. Final phase of the \$200 Million Campaign, the largest fund-raising effort in Stetson’s history, begins during Stetson Weekend. The \$5.3 million expansion and renovation of the duPont-Ball Library is completed and dedicated. First annual Undergraduate Scholarship and Performance Day showcases students’ academic achievements in a campus-wide celebration open to the public.
- 2000 Author of the bestseller, *Reason for Hope: A Spiritual Journey*, and world-renowned primatologist Jane Goodall delivers the James A. Stewart Lecture. Christine Lynn of Boca Raton donates \$10 million for extensive renovations to the Eugene M. and Christine Lynn Business Center, which houses the School of Business Administration. Construction begins on the permanent home for the Stetson University Center at Celebration. Stetson acquires \$2.6 million Oscar Bluemner art collection.
- 2001 The \$200 Million Campaign concludes with a victory celebration during Stetson Weekend in January. The original goal of \$200 million was surpassed, with the campaign raising \$235,584,479. Stetson’s third campus, the \$7.2 million Stetson University Center at Celebration, opens its doors to students for the fall semester. Construction of the first phase of a \$2 million Amelia Avenue safety and beautification streetscape project is complete -- adding gates, brick pavers and landscaping to the roadway that borders the university.
- 2002 Historic Holler Fountain is brought back to life and beautifies the DeLand campus again with light and spray displays. The Roland George Investments Program team defends its national title at the student portfolio management competition. Stetson breaks ground for a women’s fastpitch softball complex. A \$12 million renovation of the Lynn Business Center is complete and the facility opens in the fall -- featuring technology-advanced classrooms and labs in a state-of-the-art facility. The Stetson College of Law opens a new student life center that houses offices for career services, student life and student organizations, as well as a lounge, fitness center and swimming pool. The law school also launches a part-time law program and breaks ground for a law center and campus in Tampa.

## KEY INDICATORS

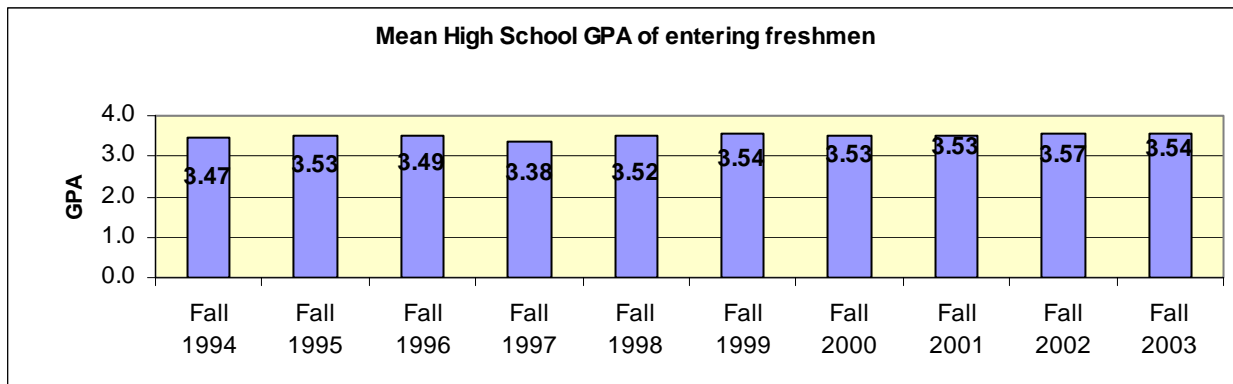
Two predictors of persistence and success in college are class rank and high school GPA. Stetson has consistently recruited high academic achievers, with at least 30% of Stetson’s incoming freshman graduating in the top 10% of their high school class.

### High School Class Rank of New Freshmen

	Fall 1997	Fall 1998	Fall 1999	Fall 2000	Fall 2001	Fall 2002	Fall 2003
90th Percentile	33.0%	33.1%	31.7%	29.9%	34.1%	31.7%	31.5%
80th Percentile	53.0%	57.1%	57.2%	50.6%	56.4%	53.2%	51.8%
70th Percentile	67.0%	74.2%	72.4%	68.2%	68.6%	70.0%	64.5%
60th Percentile	78.6%	86.2%	83.1%	78.4%	81.9%	80.8%	78.0%
50th Percentile	88.0%	91.6%	92.5%	89.1%	89.7%	90.2%	87.3%
Bottom half	12.0%	8.4%	7.5%	10.9%	10.3%	9.8%	12.7%



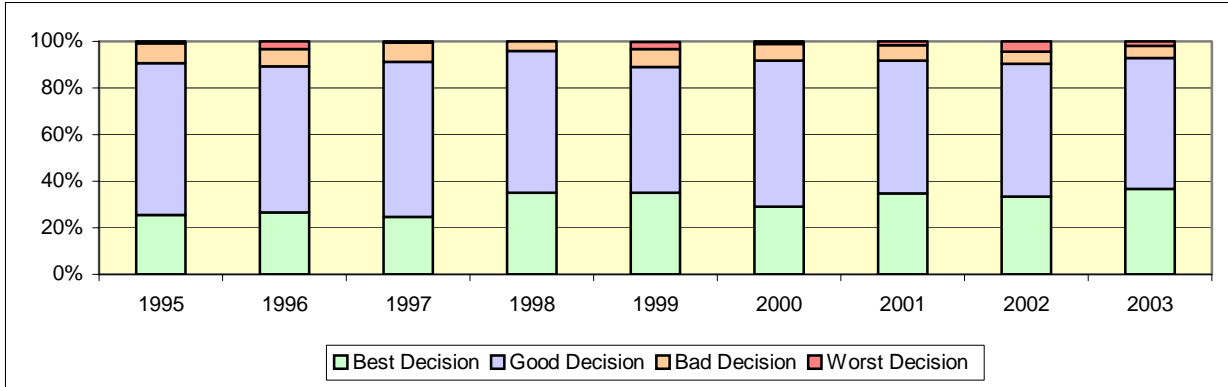
### Mean High School GPA



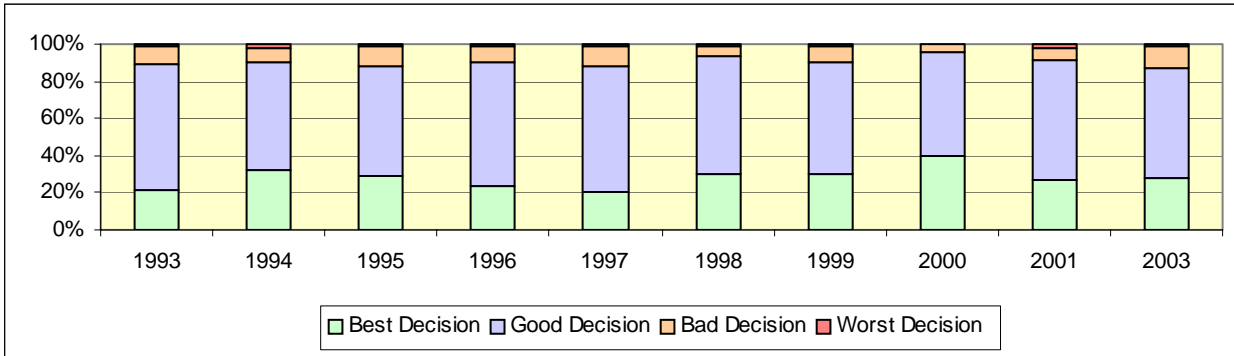
## Decision to Attend Stetson

The Institutional Research Office surveys Stetson students at various points in their educational careers. The basic cycle of student surveys includes: 1) Admitted Student Survey (of attenders and non-attenders); 2) Student Satisfaction Survey of a random sample of Freshmen, Sophomore, and Juniors conducted each Spring; 3) Senior Survey of graduating students each Spring; and 4) bi-annual Alumni Survey of students who graduated five years prior to survey. From satisfaction with campus facilities to perspectives on university policies, these surveys examine a wide variety of issues. The graphs below present longitudinal results of the survey item, **“Thinking back on your decision to attend Stetson, how would you describe that decision now?”**

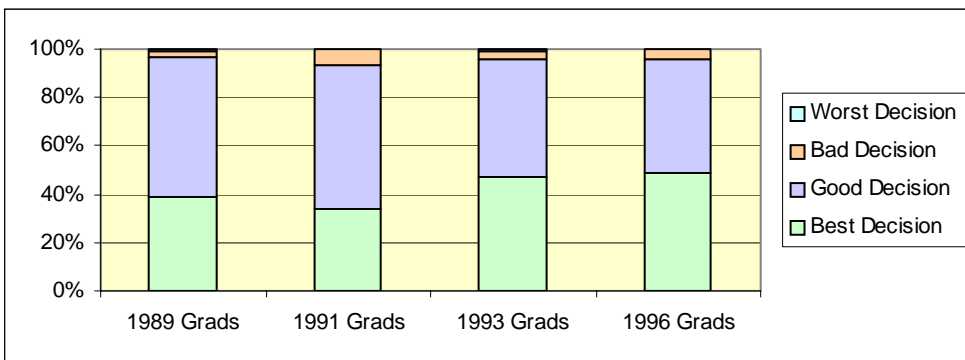
### Student Satisfaction Survey



### Senior Survey



### Alumni Survey

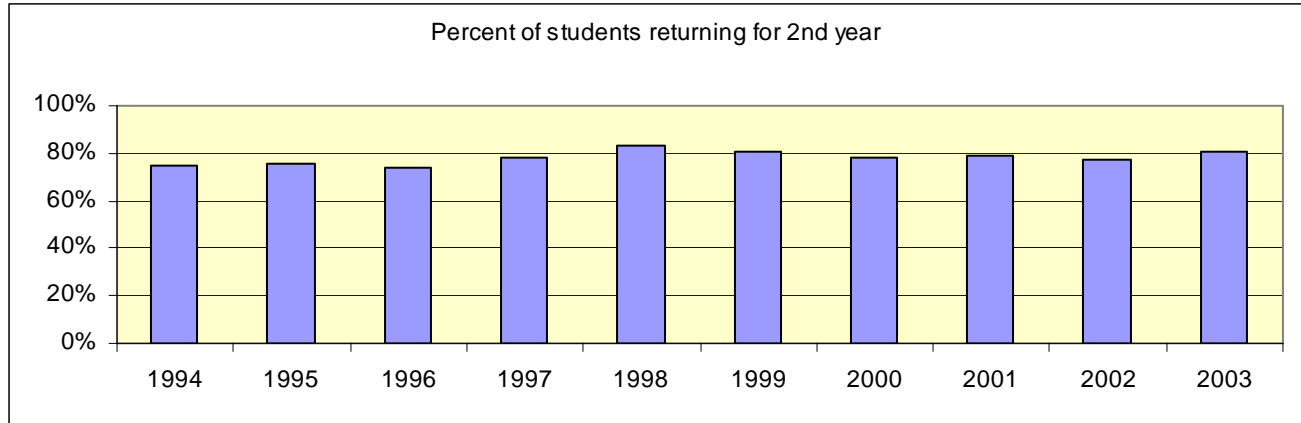


## Student Retention Analysis

In the Fall of 2002, Stetson enrolled 544\* new, first-time-in-college students and 106 new transfer students. Eighty-one percent of the new, first-time-in-college students re-enrolled for classes in the Fall of 2003 and 79% of the transfer students re-enrolled. The tables and graphs on this page describe longitudinal retention rates and characteristics of returners & non-returners.

### Percent of New (first-time-in-college) Students Returning for Second Year

1994	1995	1996	1997	1998	1999	2000	2001	2002	2003
75%	76%	74%	78%	83%	81%	78%	79%	77%	81%



### Characteristics of Returning Students

		% of New Freshman Fall '02 Returning in Fall 2003			% of New Transfers Fall '02 Returning in Fall 2003		
		Initial cohort	# returning	%	Initial cohort	# returning	%
<b>TOTAL</b>		544	438	80.5%	106	84	79.2%
<b>Gender</b>	Female	325	272	83.7%	72	55	76.4%
	Male	219	166	75.8%	34	29	85.3%
<b>Race</b>	International	13	12	92.3%	3	2	66.7%
	African American	20	14	70.0%	2	1	50.0%
	Latino/a	24	15	62.5%	3	2	66.7%
	Asian American	13	12	92.3%	2	1	50.0%
	Native American	2	1	50.0%			
	White	450	367	81.6%	85	71	83.5%
	Unknown, Other	22	17	77.3%	11	7	63.6%
<b>School</b>	Arts & Sciences	359	291	81.1%	61	45	73.8%
	Business	137	106	77.4%	39	34	87.2%
	Music	48	41	85.4%	6	5	83.3%

**Cumulative GPA (end of Spring 2003) of Fall 2002 new students**

	Returners			Non-Returners		
	Mean	Median	Std. Dev.	Mean	Median	Std. Dev.
New Freshman	2.88	2.91	.6757	1.87	1.87	.9784
New Transfers	3.01	3.09	.6872	2.53	2.61	1.17

**Average SAT of Fall 2002 new students**

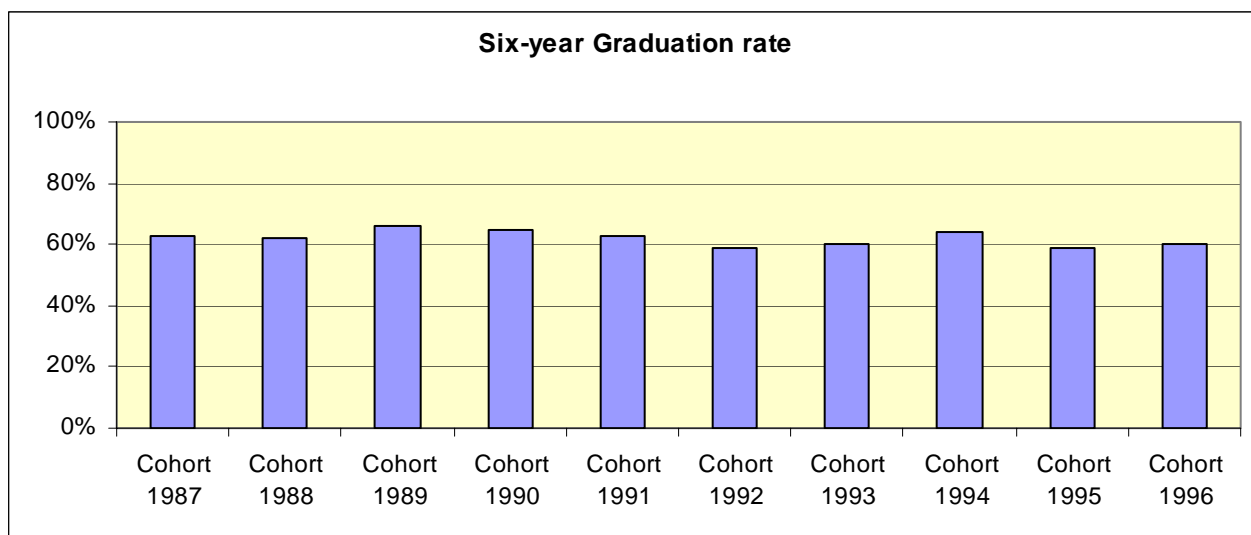
	Returners			Non-Returners		
	Mean	Median	Std. Dev.	Mean	Median	Std. Dev.
New Freshman	1138	1140	134.12	1061	1040	110.42
New Transfers	1064	1065	154.92	1016	910	204.16

**Average HS GPA of Fall 2002 new students**

	Returners			Non-Returners		
	Mean	Median	Std. Dev.	Mean	Median	Std. Dev.
New Freshman	3.63	3.79	.4199	3.29	3.34	.5072
New Transfers	3.35	3.46	.6123	3.29	3.30	.4346

**Graduation Rates**

	New Freshmen	4-year	5-year	6-year
Cohort: 1987	493	51%	61%	63%
Cohort: 1988	548	47%	59%	62%
Cohort: 1989	492	53%	64%	66%
Cohort: 1990	408	55%	64%	65%
Cohort: 1991	460	52%	62%	63%
Cohort: 1992	501	46%	57%	59%
Cohort: 1993	483	49%	58%	60%
Cohort: 1994	474	54%	62%	64%
Cohort: 1995	464	49%	57%	59%
Cohort: 1996	416	51%	60%	60%



## Senior Survey Statistics - Postgraduate Plans

The following statistics are from the HEDS Spring 2003 Senior Survey of 368 May 2003 graduates; 217 surveys were returned for a response rate of 59%.

### Primary Activity After Graduation

	<b>Percent</b>
Employment Full-Time	57.1%
Employment Part-Time	1.4%
Grad School Full-Time	34.0%
Grad School Part-Time	.9%
Military Service	.9%
Volunteer Activity	.9%
Raise a Family	.9%
Traveling	.9%
Undecided	1.4%
Other Activity	1.4%

### Degree Desired

	<b>Fall 2003 plans</b>	<b>Future plans*</b>
Master's A & S – M.A./M.S.	28.6%	30.7%
Master's Business – M.B.A.	10.4%	34.3%
Other Professional Master's Degree	14.3%	2.9%
Law Degree	14.3%	13.6%
Medical Degree	9.1%	5.0%
Ph.D.	3.9%	19.3%
Other Doctoral	1.3%	2.9%
Other Degree	18.2%	10.7%

\*Multiple Responses Allowed

### Subject Area of Planned Degree

	Fall 2003	Future		Fall 2003	Future
Law	13.1%	13.8%	Earth Science		1.6%
Medicine	11.9%	5.7%	Anthropology		.8%
Business	20.2%	38.2%	Economics		.8%
Communications, Media	1.2%	4.1%	Political Science/Govt.	1.2%	2.4%
Education	6.0%	9.8%	Psychology	7.1%	4.1%
Health Related Field	6.0%	4.9%	Sociology	1.2%	
Social Work	1.2%	2.4%	English	2.4%	2.4%
Theology	6.0%	1.6%	Fine/Performing Arts	14.3%	11.4%
Biological/Life Sciences	2.4%	2.4%	Foreign Languages	2.4%	1.6%
Chemistry	1.2%	.8%	History		1.6%
Computer Science	2.4%	1.6%	Humanities		2.4%

### Long Term Career Plans

Accounting	1.5%	Law	8.0%
Advertising, Public Relations	3.0%	Management	3.5%
Arts/Entertainment	8.5%	Marketing, Sales	3.5%
Biology/Life Science	1.0%	Medical Doctor	4.0%
Business Owner, Entrepreneur	10.0%	Medicine, Health Care, Other	5.0%
College/University Administration	.5%	Military Science	.5%
College/Univ Teaching or Research	6.5%	Physical Science	1.0%
Computer Prog, Science or Tech	4.0%	Publishing, Print Journalism	1.0%
Education, Teaching/Admin	8.0%	Religious Ministry or Service	2.0%
Environ. Science/Natural Resources	.5%	Social Science or Services	2.5%
Finance	4.0%	Sports, Recreation	1.0%
Foreign Service, Diplomacy	3.0%	Other	9.0%
Government, Politics, Public Policy	1.5%	Undecided	5.5%
Homemaker	1.5%		



## Results from Alumni/ae Surveys

The HEDS *Alumni/ae Survey* conducted by the Institutional Research Office approximately every two years offers insights into a variety of issues, including the outcomes of our general education program. The following tables presents results from three cohorts of Stetson graduates (1991, 1993 and 1996) as well as graduates from peer institutions. The abilities/types of knowledge (e.g., write effectively, communicate well orally, etc.) are examined from two perspectives: 1) How important are the abilities/type of knowledge in current personal and professional activities?, and 2) How did the undergraduate experience enhance the abilities/type of knowledge?

<i>Abilities/type of knowledge developed in Bachelor Program</i>	<b><i>Greatly Important</i></b> in current personal and professional activities					
	Stetson Grads			Peer Grads.		
	1991	1993	1996	1991	1993	1996
Acquire new skills / knowledge on my own	71%	74%	85%	72%	72%	83%
Think analytically and logically	76%	73%	81%	73%	75%	84%
Formulate creative/original ideas & solutions	64%	61%	64%	66%	62%	65%
Academic ability			44%			44%
Write effectively	75%	67%	61%	68%	72%	65%
Use quantitative tools (e.g., statistics, graphs)	20%	21%	38%	19%	25%	40%
Appreciate Arts			24%			27%
Gain knowledge in a field			64%			62%
Speak/read foreign language			11%			12%
Develop social awareness			37%			43%
Place problems in perspective			49%			52%
Identify/understand moral and ethical issues	34%	32%	54%	31%	32%	56%
Self-understanding			64%			63%
Function independently			95%			90%
Develop self-esteem			65%			65%
Establish course of action			86%			83%
Intellectual self-confidence			79%			75%
Desire for continued learning			71%			71%
Lead & supervise tasks & groups of people	60%	51%	68%	51%	50%	63%
Relate well to people of different races, nations, & religions	56%	58%	70%	55%	54%	66%
Function effectively as a team member	65%	66%	84%	62%	64%	77%
Communicate well orally	84%	84%	89%	81%	84%	84%
Understand others			75%			80%
Understand scientific process			18%			28%
Use computers, technology	64%	69%	66%	58%	63%	56%

	Enhanced <i>Greatly</i> in current personal and professional activities					
<i>Abilities/type of knowledge developed in Bachelor Program</i>	Stetson Grads			Peer Grads.		
	1991	1993	1996	1991	1993	1996
Acquire new skills / knowledge on my own	41%	46%	57%	50%	46%	61%
Think analytically and logically	48%	47%	44%	55%	52%	60%
Formulate creative/original ideas & solutions	33%	36%	34%	40%	32%	42%
Academic ability			56%			55%
Write effectively	44%	49%	50%	57%	57%	59%
Use quantitative tools (e.g., statistics, graphs)	20%	21%	30%	15%	18%	27%
Appreciate arts			29%			41%
Gain knowledge of a field			41%			38%
Read/speak a foreign language			11%			15%
Develop social awareness			21%			35%
Place problems in perspective			21%			29%
Identify/understand moral and ethical issues	22%	17%	26%	31%	21%	39%
Self-understanding			36%			41%
Function independently			48%			50%
Develop self-esteem			33%			36%
Establish course of action			46%			43%
Intellectual self-confidence			47%			47%
Desire for continued learning			54%			59%
Lead & supervise tasks & groups of people	32%	33%	31%	25%	26%	24%
Relate well to others	22%	27%	28%	36%	20%	27%
Function effectively as a team member	42%	39%	52%	32%	36%	35%
Communicate well orally	40%	55%	47%	41%	47%	38%
Understand others			30%			36%
Under scientific process			26%			27%
Use computers, technology	28%	25%	35%	22%	20%	19%

1991 peer group contains results from Hamline, Oberlin, and U of Puget Sound. 1993 peer group contains results from Rollins College, U of Puget Sound, Wake Forest, and Hamline. 1996 peer group contains results from U of Richmond, St. Lawrence, U of Puget Sound, and Centre.

*Source: HEDS Alumni/ae Surveys conducted in 1996, 1998 and 2002*

## Tuition and Fees

### Stetson - Historical

Year	Undergraduate			Per Credit Hour Fees	
	Tuition	Fees	Total	U-Grad	Graduate
1991 - 1992	\$9,610	\$410	\$10,020	\$320	\$215
1992 - 1993	\$10,660	\$450	\$11,110	\$355	\$235
1993 - 1994	\$11,510	\$485	\$11,995	\$385	\$255
1994 - 1995	\$12,315	\$555	\$12,870	\$410	\$275
1995 - 1996	\$13,110	\$590	\$13,700	\$440	\$295
1996 - 1997	\$14,100	\$635	\$14,735	\$470	\$315
1997 - 1998	\$15,100	\$665	\$15,765	\$500	\$350
1998 - 1999	\$15,850	\$800	\$16,650	\$525	\$370
1999 - 2000	\$16,640	\$870	\$17,510	\$550	\$390
2000 - 2001	\$17,475	\$910	\$18,385	\$580	\$410
2001 - 2002	\$18,350	\$960	\$19,310	\$610	\$430
*2002 - 2003	\$19,950	\$1275	\$21,225	\$650	\$430
*2003 - 2004	\$21,300	\$1340	\$22,640	\$685	\$450**

\*New Students

\*\*DeLand campus

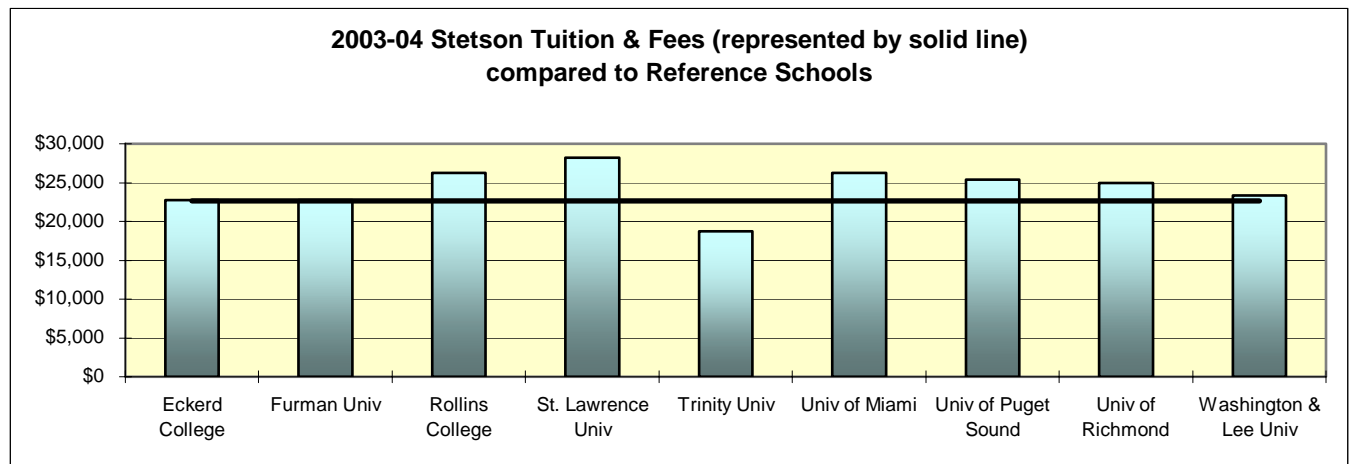
### 2003 - 04 Reference Schools Comparison - Tuition and Fees

Furman Univ	22,712	Trinity Univ	18,697
Rollins College	26,250	Univ of Puget Sound	25,360
St. Lawrence Univ	28,190	Univ of Richmond	24,940
Stetson	22,640	Washington & Lee Univ	23,295

#### Other

Univ of Miami	26,280	Eckerd College	22,774
---------------	--------	----------------	--------

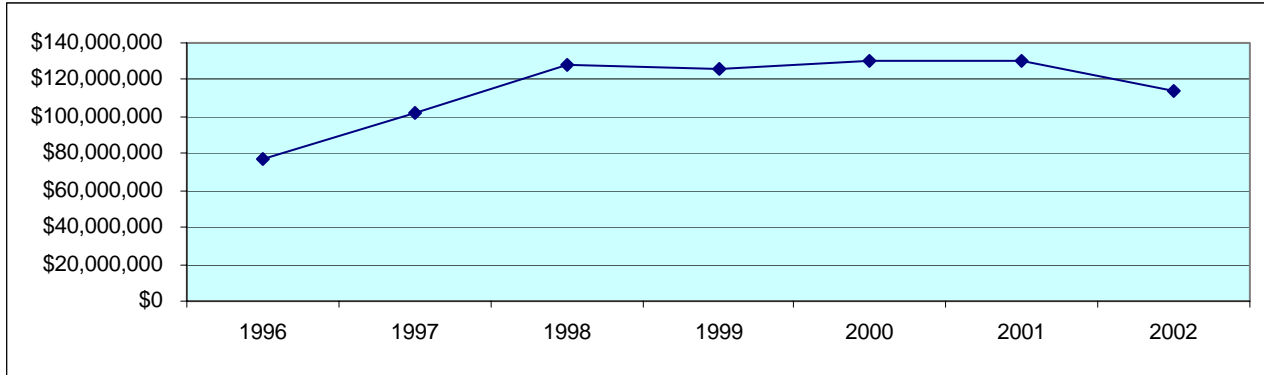
Source: HEDS Consortium



## Financial Information

### Endowment - Market Value

5/31/96	5/31/97	5/31/98	12/31/99	5/31/00	5/31/01	5/31/02
\$76,820,000	\$102,012,000	\$127,858,000	\$125,930,588	\$130,066,800	\$130,407,000	113,679,000



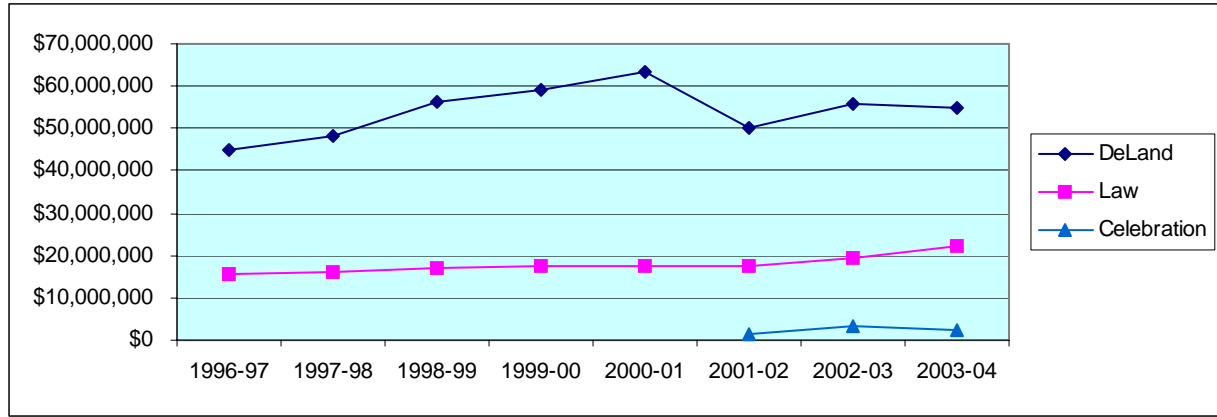
### Endowment - Reference Schools

School	Market Value End FY02	National Rank in Endowment Assets
University of Richmond	\$998,201,000	40th
Trinity University	\$599,347,000	73rd
Washington & Lee University	\$435,561,000	95th
Furman University	\$229,999,000	164th
St. Lawrence University	\$173,999,000	194th
University of Puget Sound	\$168,702,000	199th
Rollins College	\$124,864,000	258th
Stetson	\$113,679,000	274th

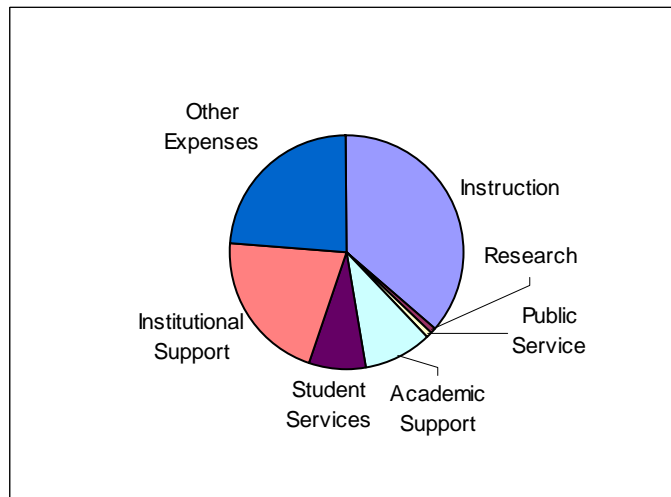
Source: 2002 NACUBO Endowment Study

## Annual Budget

	1998-99	1999-00	2000-01	2001-02	2002-03	2003-04
DeLand	\$56,200,000	\$59,073,000	\$63,377,000	\$49,944,000	\$55,670,000	\$54,902,000
Law	\$17,000,000	\$17,616,000	\$17,285,000	\$17,285,000	\$19,188,000	\$22,287,000
Celebration				\$1,524,000	\$3,118,000	\$2,550,000



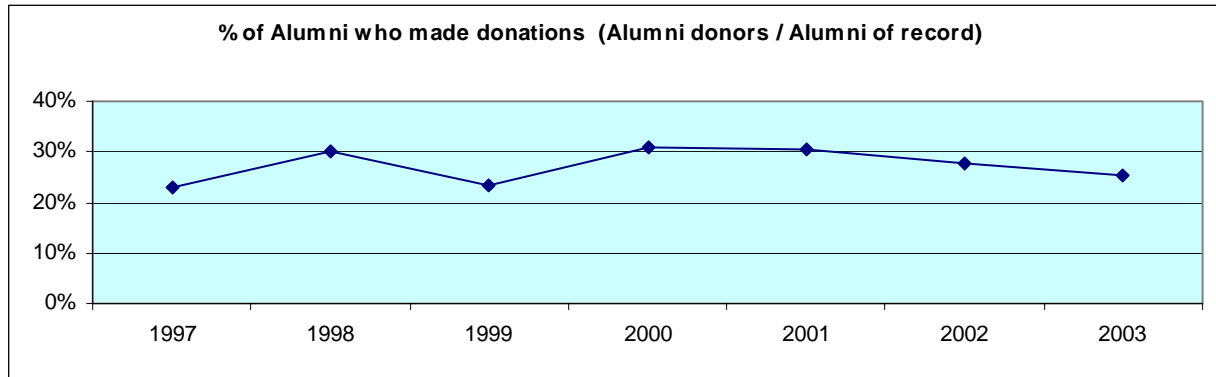
## Expenditures – Fiscal Year 2002



Source: IPEDS Finance Survey

## Alumni Giving Profile

	1997	1998	1999	2000	2001	2002	2003
Alumni of record	19,278	18,940	18,240	18,724	14,911	14,718	14,341
Alumni solicited	11,098	14,526	16,040	14,358	10,255	10,116	9,528
Alumni donors	4,402	5,723	4,273	5,759	4,534	4,069	3,653
Giving percent of record	22.83%	30.22%	23.43%	30.8%	30.4%	27.6%	25.5%



## Student Financial Aid

### Scholarships/Grants (2003-2004)

<i>Undergraduates</i>	Scholarships & Grants	
	Total	Average
Institutional	\$18,431,089	\$9,635
Federal Need-based	\$1,744,044	\$3,413
Federal Non-need-based	\$12,000	\$1,500
Florida Merit	\$2,508,585	\$2,592
Florida Need-based	\$416,900	\$954
Florida Non-need-based	\$3,299,400	\$2,226
External Need-based	\$5,110	\$730
External	\$701,994	\$3,176
<b>TOTAL Scholarships/Grants</b>	<b>\$27,119,122</b>	<b>\$13,274</b>

### Total Aid and Self-Help\* (2003-2004)

	New Full-time Freshman	Full-time Undergrads
Total financial aid	\$10,417,372	\$38,771,036
Average financial aid package	\$20,072	\$19,232
Total Self-help	\$2,138,145	\$9,772,740
Average self-help	\$7,636	\$8,603

\*Self help includes work-study and loans.

# ACADEMIC PROGRAMS

## Degrees and Programs Offered (2003-04)

### College of Arts and Sciences

American Studies	B.A.	Latin American Studies	B.A.
Aquatic & Marine Biology*	B.S.	Mathematics	B.A., B.S.
Art	B.A.	Modern Languages	
Biology	B.A., B.S.	French	B.A.
Biochemistry*	B.S.	German	B.A.
Chemistry	B.S.	Spanish	B.A.
Communication Studies	B.A.	Molecular Biology*	B.S.
Computer Science	B.S.	Music	B.A.
Digital Arts	B.A.	Philosophy	B.A.
Economics	B.A., B.S.	Physics	B.S.
Elementary Education*	B.A., B.S.	Political Science	B.A., B.S.
English	B.A.	Psychology	B.A., B.S.
Environmental Science	B.A., B.S.	Religious Studies	B.A.
Geography	B.A., B.S.	Russian Studies	B.A.
History	B.A.	Secondary Education*	B.A., B.S.
Humanities	B.A.	Social Science*	B.A.
Integrative Health Sciences		Social Science - Education*	B.A.
Health Science	B.S.	Sociology	B.A., B.S.
Rehabilitative Studies	B.S.	Sport Management	B.A.
International Studies	B.A.	Theatre Arts	B.A.

\* Minor NOT available

### Minors only

Africana Studies	Art History & Studio Art	Russian
Anthropology	Health Care Issues	Women and Gender Studies
Applied Ethics	Journalism	

### Cooperative Programs

Engineering	Pre-Med	Forestry and Environmental Studies
Medical Technology	Pre-Law	

### School of Business Administration

Accounting Information Systems	B.B.A.	General Business Administration	B.B.A.
Economics*	B.B.A.	International Business*	B.B.A.
Electronic Business Technology	B.B.A.	Management	B.B.A.
Finance	B.B.A.	Marketing	B.B.A.

\* Minor NOT available

### Minors only

Applied Statistics	Business Law	Family Business
--------------------	--------------	-----------------

### School of Music

B.A. Music  
B.A. Digital Arts - Music Track

B.M.E. Instrumental/General  
B.M.E. Vocal/General

B.M. Performance  
Piano/Organ  
Voice  
Guitar  
Orchestral Instrument

B.M. Theory and Composition  
B.M. Elective Studies in a Specific Outside Field  
Digital Arts  
Business  
Other

**Minors**

General Music

Church Music (must be attached to a music degree)

**Graduate**

Mental Health Counseling  
Marital, Couple, & Family  
Counseling/Therapy  
School Counseling  
Education  
Reading Education  
Exceptional Student Education/  
Varying Exceptionalities

M.S.	Career Teacher	Ed.S.
	English	M.A.
M.S.	Educational Leadership	M.Ed., Ed.S.
M.S.		M.B.A./M.Ed.
M.A.		M.B.A./Ed.S.
M.Ed.	Accounting	M.Acc.
	General Business Administration	M.B.A.
M.Ed.		



## Enrollment by Major - Undergraduate (Fall 2003)

### Includes Double Majors

#### College of Arts and Sciences

Major	Frequency	% of A&S Majors	Major	Frequency	% of A&S Majors
American Studies	5	0.4%	German – Sec. Education	1	0.1%
Aquatic & Marine Biology	16	1.4%	Health Science	35	3.0%
Art	34	2.9%	History	42	3.6%
Athletic Training	2	0.2%	Humanities	8	0.7%
Biochemistry	15	1.3%	International Studies	18	1.5%
Biology	105	9.0%	Latin American Studies	3	0.3%
Biology-Sec. Education	2	0.2%	Math.-Sec. Education	5	0.4%
Chemistry	12	1.0%	Mathematics	15	1.3%
Communication Studies	57	4.9%	Molecular Biology	3	0.3%
Computer Information Systems	2	0.2%	Music	9	0.8%
Computer Science	18	1.5%	Philosophy	14	1.2%
Digital Arts-Art Track	33	2.8%	Physics	15	1.3%
Digital Arts-Computer Science	12	1.0%	Political Science	113	9.6%
Digital Arts-Music Track	6	0.5%	Psychology	139	11.9%
Economics	7	0.6%	Rehabilitative Studies	18	1.5%
Elementary Education	99	8.4%	Religious Studies	28	2.4%
English	83	7.1%	Russian Studies	13	1.1%
English-Sec. Education	5	0.4%	Social Science	1	0.1%
Environmental Science	17	1.5%	Social Science-Sec. Educ.	8	0.7%
Exercise Science	3	0.3%	Sociology	42	3.6%
French	8	0.7%	Spanish	17	1.5%
Gen Studies in Ed	17	1.5%	Sport Administration	6	0.5%
Geography	2	0.2%	Sport Management	36	3.1%
German	6	0.5%	Theatre Arts	17	1.5%
			<b>Total A&amp;S Majors</b>	<b>1172</b>	<b>100.0%</b>

#### School of Business

Major	Frequency	% of Bus. Majors
Accounting Info Systems	54	7.8%
Accounting – Public	5	0.7%
Computer Information Systems	4	0.6%
E-Business Technology	37	5.4%
Economics	14	2.0%
Finance	107	15.6%
General Business Admin.	216	31.4%
International Business	63	9.2%
Management	81	11.8%
Marketing	107	15.6%
<b>Total Business Majors</b>	<b>688</b>	<b>100.0%</b>
Discovery (Undeclared)	209	
No Major Necessary	12	

#### School of Music

Major	Frequency	% of Mus. Majors
B.M. Outside Field	19	9.5%
B.M. Outside Field-Business	15	7.5%
B.M. Outside Field-Digital Art	4	2.0%
Guitar	7	3.5%
Music Ed-Instrumental/Gen.	55	27.4%
Music Education-Vocal	15	7.5%
Orchestral Instrument	26	12.9%
Piano/Organ	17	8.5%
Theory & Comp:Theory	3	1.5%
Theory & Comp-Comp.	6	3.0%
Vocal/General	5	2.5%
Voice	29	14.4%
<b>Total Music Majors</b>	<b>201</b>	<b>100.0%</b>

## Enrollment by Minor - Undergraduate (Fall 2003)

Includes Double Minors

	School of Student's Major				School of Student's Major		
	A & S	Business	Music		A & S	Business	Music
Accounting Minor	2	6		Health Care Issues	5		
Africana Studies	2			Health Science	1	1	
American Studies	2			History	11	4	
Anthropology	10			Humanities	2		
Applied Ethics Minor	1	1		Information Technology	1	2	
Applied Statistics		2		International Studies	1	1	
Art	6	4		Journalism	20	5	1
Art History	5			Latin American Studies	2		
Biology	4	2		Management	3	12	
Business Law	17	52		Marketing	16	16	
Chemistry	9			Mathematics	13	4	
Church Music Minor			1	Music Minor	35	9	1
Communication Studies	8	10	1	Philosophy	6	3	
Computer Science		2		Physics			
Digital Arts	9	7		Political Science	21	8	
E-Business Technology	7	61		Psychology	42	12	
Economics	1	2		Religious Studies	18	5	3
Education	21			Russian	6		
English	11	2	3	Russian Studies	2	1	
English Creative Writing	4	1		Sociology	17	8	
Environmental Science	2			Spanish	22	13	
Exercise Science		1		Sport Administration	3	2	
Family Business	4	9		Sport Management	1	5	
Finance	2	12		Theatre Arts	10		1
French	14	10	1	Varying Exceptionalities	1		
General Business Admin.	21	3	1	Women & Gender Studies	11		
Geography	1			<b>TOTALS</b>	<b>437</b>	<b>300</b>	<b>13</b>
German	4	2					

## Enrollment by Major - Graduate (Fall 2003)

Major	#	%	Major	#	%
General Business Administration	168	43.9%	Counseling – School Guid & Family	3	0.8%
Accounting	5	1.3%	School Counseling	24	6.3%
Elementary Education	1	0.3%	Counseling – Marriage & Family	29	7.6%
Education	2	0.5%	Mental Health Counseling	19	5.0%
Reading Education	14	3.7%	English	6	1.6%
Exceptional Student Education	9	2.3%	None Declared	31	8.1%
Career Teacher	19	5.0%	<b>TOTAL</b>	<b>383</b>	<b>100.0</b>
Educational Leadership	53	13.8%			

## Enrollment by Major - Undergraduate (Historical)

Includes Double Majors\*

Arts & Sciences	1994	1995	1996	1997	1998	1999	2000	2001	2002	2003
American Studies	5	6	10	11	11	6	6	5	5	5
Aquatic & Marine Biology								7	13	16
Art	12	11	13	17	23	31	42	36	35	34
Biochemistry				12	30	32	31	29	20	15
Biology	120	120	112	114	111	114	110	113	95	105
Biology - Molecular						1	3	5	4	3
Biology - special					3			1	2	
Chemistry	34	29	30	19	17	15	14	17	14	12
Communication Studies	38	35	40	51	46	55	73	72	69	57
Computer Info Systems			2	12	12	4	11	14	4	2
Computer Science	23	20	32	35	44	54	49	34	26	18
Digital Arts			8	26	50	74	82	67	63	51
Economics	4	7	4	5	7	3	4	11	10	7
Education - Elementary	110	100	100	100	89	72	78	75	89	99
Education – General					1			10	1	17
Education - Secondary	24	17	16	19	16	17	17	21	29	21
English	123	82	70	62	64	66	72	68	67	83
Environmental Science			3	18	31	24	19	19	21	17
Foreign Language - French	14	11	9	5	12	10	11	8	6	8
Foreign Language - German	7	4	3		1	4	5	3	8	6
Foreign Language - Spanish	12	16	9	5	15	20	20	21	17	17
Foreign Language Combo	2	1								
Geography	11	11	6	2	1	7	6	4	2	2
History	40	36	35	39	37	28	31	20	34	42
Honors	1		4	1						
Humanities	6	5	2	3	6	7	4	8	10	8
Integ Health – Health Science								15	39	35
International Studies		1			2	6	6	13	18	18
Journalism self-defined					1					
Latin American Studies		2	2	1			1	1	3	3
Mathematics	17	26	25	19	18	18	13	9	10	15
Med Tech	3	2	2	2	1		1		1	
Philosophy	3	7	1	2	10	12	13	9	11	14
Physical Education						1				
Physics	16	23	17	15	14	13	21	17	16	15
Political Science	114	98	89	87	84	73	102	99	108	113
Psychology	149	140	127	121	108	101	132	135	146	139
Religious Studies	5	7	10	13	20	15	16	16	29	28
Russian Studies	8	8	5	5	3	2	2	2	16	13
SES-Athletic Training	6	7	4	8	20	24	22	14	5	2
SES-Exercise Science	56	51	37	46	55	51	45	27	7	3
SES-Movement Therapy		1	13	12	21	24	13	1		
SES – Rehabilitative Studies							2	9	18	18
SES-Sport Admin/Mgmt	24	27	29	26	33	39	44	40	35	42
SES-Sport Communications	2	6	9	11	7	4	1			
Social Science	4	3	3	3	4	2	4	3	2	1
Sociology	31	33	25	21	33	47	45	35	37	42
Theatre Arts	6	10	10	8	12	11	11	13	14	17
<b>Total</b>	<b>1030</b>	<b>963</b>	<b>916</b>	<b>956</b>	<b>1073</b>	<b>1087</b>	<b>1182</b>	<b>1126</b>	<b>1156</b>	<b>1163</b>

## Enrollment by Major - Undergraduate (Historical), continued

<b>Business</b>	<b>1994</b>	<b>1995</b>	<b>1996</b>	<b>1997</b>	<b>1998</b>	<b>1999</b>	<b>2000</b>	<b>2001</b>	<b>2002</b>	<b>2003</b>
Accounting Info Systems	148	127	88	85	80	87	81	60	55	59
Business Economics	7	7	7	4	4	7	10		14	14
Computer Info Systems			1	8	15	34	32	30	17	4
Electronic Business Tech								13	40	37
Finance	77	76	77	80	63	77	88	99	102	107
General Business Admin	223	202	200	200	212	221	239	232	209	216
International Business				18	42	56	79	86	77	63
Management	70	83	82	68	66	80	72	73	72	81
Marketing	65	74	83	76	67	92	104	110	119	107
Undeclared (Business)										
<b>Total</b>	<b>590</b>	<b>569</b>	<b>538</b>	<b>539</b>	<b>549</b>	<b>654</b>	<b>705</b>	<b>703</b>	<b>705</b>	<b>688</b>

<b>Music</b>	<b>1994</b>	<b>1995</b>	<b>1996</b>	<b>1997</b>	<b>1998</b>	<b>1999</b>	<b>2000</b>	<b>2001</b>	<b>2002</b>	<b>2003</b>
Bach of Music w/Bus Adm				10	17	11	16	14	13	15
Bach of Music w/outside Field			4	7	11	16	6	13	20	19
Bachelor of Music w/Dig Arts				7	7	8	5	8	5	4
Church Music	1	1								
Music Education	80	96	75	87	87	82	74	71	69	70
Music Lib. Arts	7	9	9	6	2	3	3	7	3	9
Musical Theater	4	3	2			1				
Performance:										
Guitar	11	12	10	13	11	8	10	10	8	7
Orchestral Instrument	23	23	13	20	19	23	14	21	21	26
Piano	13	7	6	2	1					
Piano/Organ			1	6	9	5	7	11	9	17
Voice	16	24	24	19	25	29	38	54	36	34
Theory & Composition	2	9	5	6	5	6	16	11	13	9
Undeclared (Music)	1	3	21	1	5	8	1	1		
<b>Total</b>	<b>158</b>	<b>187</b>	<b>170</b>	<b>184</b>	<b>199</b>	<b>200</b>	<b>190</b>	<b>221</b>	<b>197</b>	<b>210</b>

No major or college										12
Discovery	221	231	227	229	242	224	192	220	193	209

\*Statistics for 1994 – 1997 do **not** include double majors.

## Degrees Awarded by Major - Undergraduate (Historical)

<b>Program</b>	<b>7/1/96 to 6/30/97</b>	<b>7/1/97 to 6/30/98</b>	<b>7/1/98 to 6/30/99</b>	<b>7/1/99 to 6/30/00</b>	<b>7/1/00 to 6/30/01</b>	<b>7/1/01 to 6/30/02</b>	<b>7/1/02 to 6/30/03</b>
American Studies	4	6	2	1	1	1	2
Art	4	3	4	2	5	10	5
Biology	18	27	25	20	23	19	24
Biology, Molecular							1
Bio-Chemistry			4	2	4	9	11
Chemistry	3	7	3	6		2	3
Communications	20	16	14	10	19	22	21
Communications, Other		4	2	1	2		
Computer & Info Science	5						
Computer Science		3	12	9	7	3	7
Computer Science, Other (DA)					16	17	19
Economics	2	1	4	1	1		1
English	23	19	15	11	21	21	11
Environmental Science / Studies	1	1	5	5	5	7	4
Foreign Language: French	3	2	3			1	1
Foreign Language: German	2				1		1
Foreign Language: Spanish	6	5	1	1	3	7	
Geography	6	1	2		1		
Health Sciences						2	9
History	13	10	12	10	6	5	5
Humanities	2	2	1	5	3	2	4
International Studies/Sciences		1			1	1	4
Latin American Studies		1					
Mathematics	5	8	3	3	3	3	3
Medical Technology				1			
Philosophy	3		1	1	1	3	4
Physics	2	3	3	1	5	4	1
Political Science	16	23	22	10	10	18	19
Physiological PSY, Psy-biology						1	
Psychology	34	35	28	24	30	27	30
Religious Studies	3	8	3	5	3	4	6
Russian Studies	2	1	1		1		
SES: Athletic Trng, Sports Med		2		4	3	6	2
SES: Ex Sci & Mvmt Therapy		14	15	20	20	15	3
SES: Sport & Fitness Admin	6	9	6	8	12	12	10
Social Science Teacher Educ	1						
Social Sciences	1	4	2	2	3	7	2
Sociology	12	7	9	11	21	11	10
Teacher Educ – Elem	30	23	34	20	16	18	18
Teacher Educ - English	2	4	3	1			
Teaching & Coaching - Phys Ed	11						
Theatre Arts	3	1	4	1	2	1	1
<b>Arts &amp; Sciences Total</b>	<b>243</b>	<b>251</b>	<b>243</b>	<b>196</b>	<b>249</b>	<b>259</b>	<b>242</b>
<b>Business</b>							
Business Administration	39	35	38	37	44	30	30

Accounting	28	19	22	15	20	18	10
Business Economics	2			2	1	2	
Business, Other (CIS)			3	5	9	6	9
Electronic Business Tech							9
Finance	23	31	29	20	24	33	27
International Business			3	7	8	14	18
Management	25	26	16	23	16	24	28
Marketing	35	32	19	32	40	39	39
<b>Business Total</b>	<b>152</b>	<b>143</b>	<b>130</b>	<b>141</b>	<b>162</b>	<b>166</b>	<b>170</b>

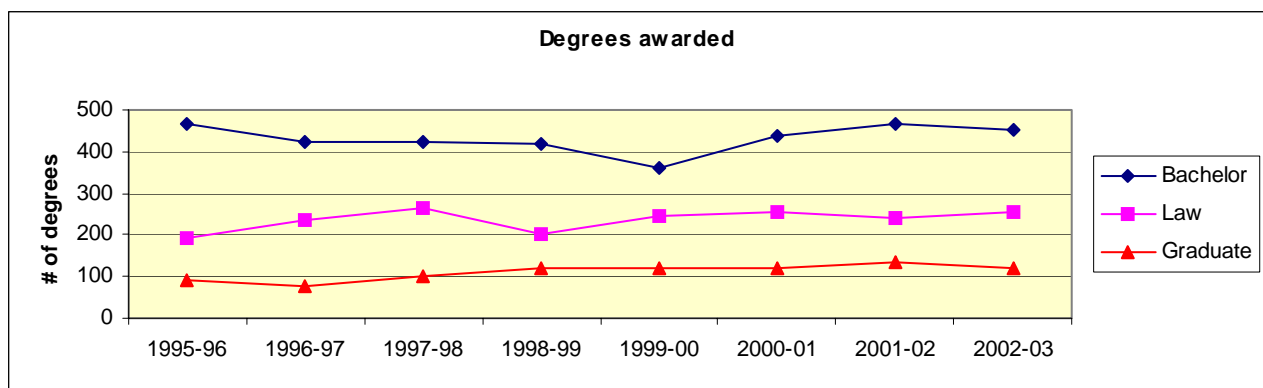
<b>Music</b>							
Music Perf - Piano & Organ	6	1	1		1	1	
Music Perf – Viola, Guitar							2
Music Perf - Voice	2	5	5	2	7	7	6
Music – Other	11	8	15	6	1	8	12
Music, General Performance		1	2	6	2	11	1
Music Theory & Composition		2	1		2	1	2
Teacher Educ – Music	11	13	19	11	12	12	19
<b>Music Total</b>	<b>30</b>	<b>30</b>	<b>43</b>	<b>25</b>	<b>25</b>	<b>40</b>	<b>42</b>

<b>UNDERGRADUATE TOTAL</b>	<b>425</b>	<b>424</b>	<b>416</b>	<b>362</b>	<b>436</b>	<b>465</b>	<b>454</b>
----------------------------	------------	------------	------------	------------	------------	------------	------------

Source: IPEDS Completion Reports (classified by CIP codes)

### Degrees Awarded - by Degree Type (Historical)

	1995-96	1996-97	1997-98	1998-99	1999-00	2000-01	2001-02	2002-03
<b>Arts &amp; Sciences</b>								
Bachelor	277	243	251	243	196	249	259	242
Graduate	47	40	39	23	48	40	42	53
<b>Business</b>								
Bachelor	151	152	143	130	141	162	166	170
Graduate	46	36	63	95	74	79	94	65
<b>Music</b>								
	36	30	30	43	25	25	40	42
<b>Law</b>								
	191	235	265	202	243	257	240	255



### College of Law

### **Law School Tuition** (*10 credit hours or more*)

1996-97	1997-98	1998-99	1999-00	2000-01	2001-02	2002-03	2003-04
\$18,175	\$18,975	\$19,750	\$20,350	\$21,165	\$21,905	\$22,785	\$23,924

### **Law School Tuition for Summer Session** (*5 credit hours or more*)

1996	1997	1998	1999	2000	2001	2002	2003
\$4,550	\$4,750	\$4,950	\$5,100	\$5,305	\$5,475	\$5,695	\$5,980

### **Law School Key Facts**

- Ranked Number One in trial advocacy by *U.S. News & World Report*
- Outstanding intercollegiate competition opportunities
- Only law school in the nation to win all five national-level law school trial competitions in one academic year
- Centers for Excellence in Advocacy, Dispute Resolution, Elder Law, Health Law, and International Law & Business
- Accomplished faculty who are experts in their fields
- Practice-based clinics and internships
- The first law school in Florida to establish a clinical program
- Concentration programs in Advocacy, Elder Law, Health Law and International Law
- Honors program for top students
- Part-time J.D. program beginning Fall 2002
- Joint J.D./M.B.A. program
- LL.M. in International Law and Business
- Small classes and individual attention to student needs
- A solid, skill-based curriculum
- Excellent job placement services
- Summer programs in Estonia and Spain
- The first law school in Florida and one of the first law schools in the nation to require pro bono service by students and faculty
- Vibrant student life with a diversity of student organizations, interscholastic activities and competitions
- State-of-the-art Law Library and Legal Information Center
- Superb facilities, with advanced computer and Internet technology
- International, national and regional continuing legal education (CLE) programs
- Beautiful Tampa Bay location

For more information on the College of Law, visit [www.law.stetson.edu](http://www.law.stetson.edu).

## STUDENT INFORMATION

### Admissions

#### High School Class Rank - New Freshman

	Fall 2000	Fall 2001	Fall 2002	Fall 2003
Top 10% of high school graduating class	29.9%	34.1%	31.7%	31.5%
Top 20% of high school graduating class	50.6%	56.4%	53.2%	51.8%
Top 25% of high school graduating class	59.4%	62.7%	61.2%	58.2%
Top 50% of high school graduating class	89.1%	89.7%	90.2%	87.3%

1999 - 85% of new freshmen submitted class rank

2000 - 81% of new freshmen submitted class rank

2001 - 77% of new freshmen submitted class rank

2002 - 77% of new freshmen submitted class rank

2003 - 74% of new freshmen submitted class rank

### SAT / ACT Scores

#### Fall 2003 New Freshmen

	75th Percentile	25th Percentile	Average
SAT - Math	610	510	564
SAT - Verbal	620	520	572
SAT - Total	1230	1050	1143

ACT Math	26	20	23
ACT English	27	21	24
ACT Composite	27	21	24

High School GPA	4.00	3.20	3.54
-----------------	------	------	------

92% of new freshman submitted SAT scores

40% of new freshman submitted ACT scores

95% of new freshman submitted High School GPA

### Range of SAT / ACT Scores

#### Fall 2003 New Freshmen

SAT	Verbal	Math
700 - 800	6.8%	4.2%
600 - 699	28.6%	28.6%
500 - 599	49.8%	48.9%
400 - 499	14.6%	17.2%
300 - 399	.2%	1.1%

ACT	Composite	English	Math
30 - 36	7.3%	11.7%	7.3%
24 - 29	48.8%	44.4%	41.5%
18 - 23	42.9%	37.1%	42.4%
12 - 17	1.0%	6.3%	8.8%
6 - 11	--	.5%	--

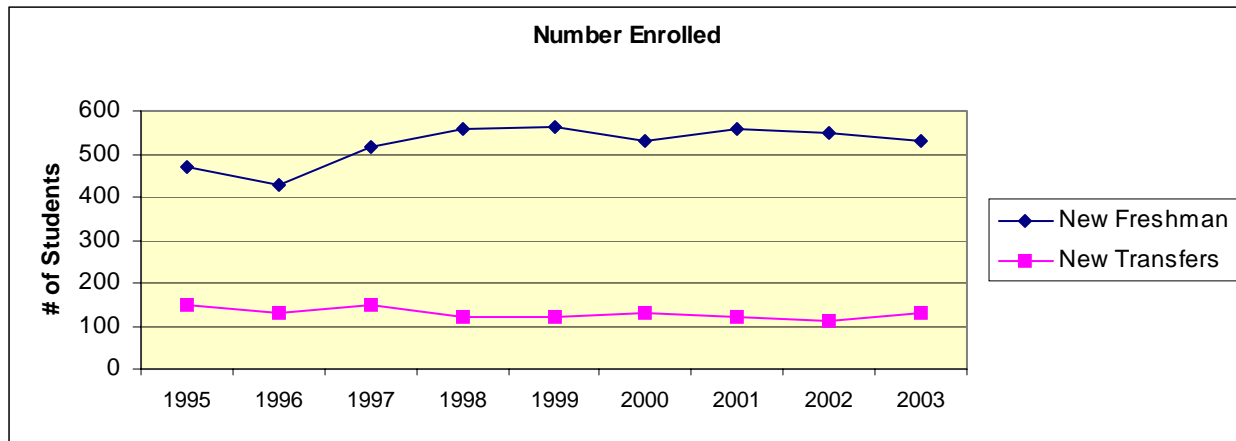


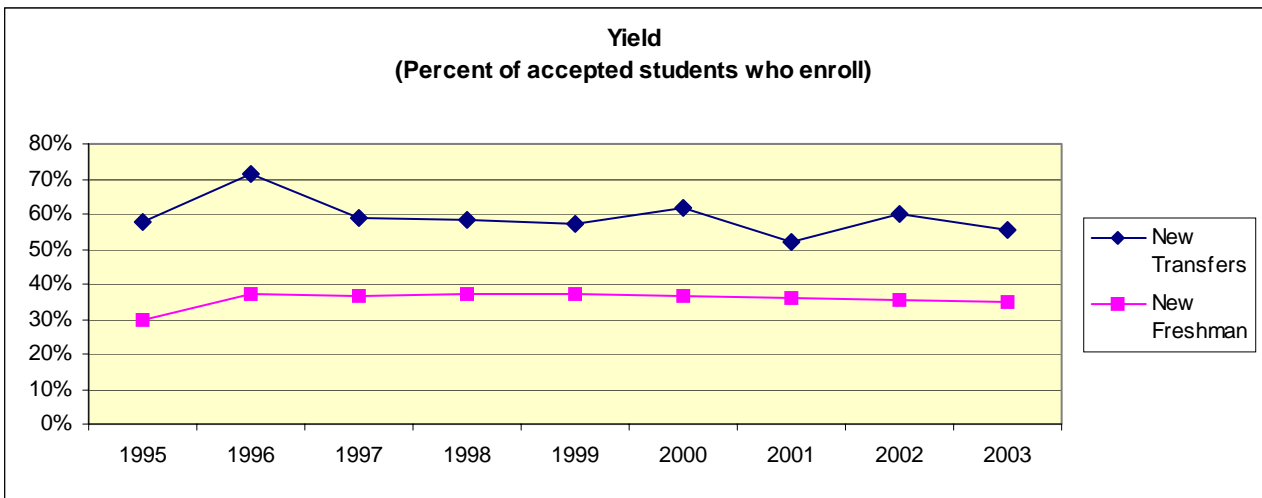
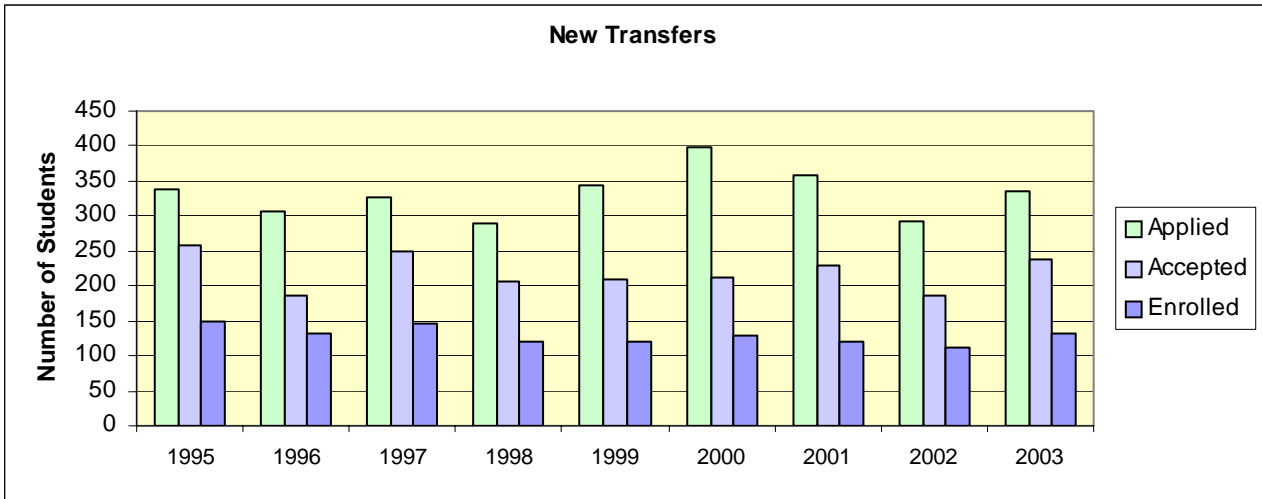
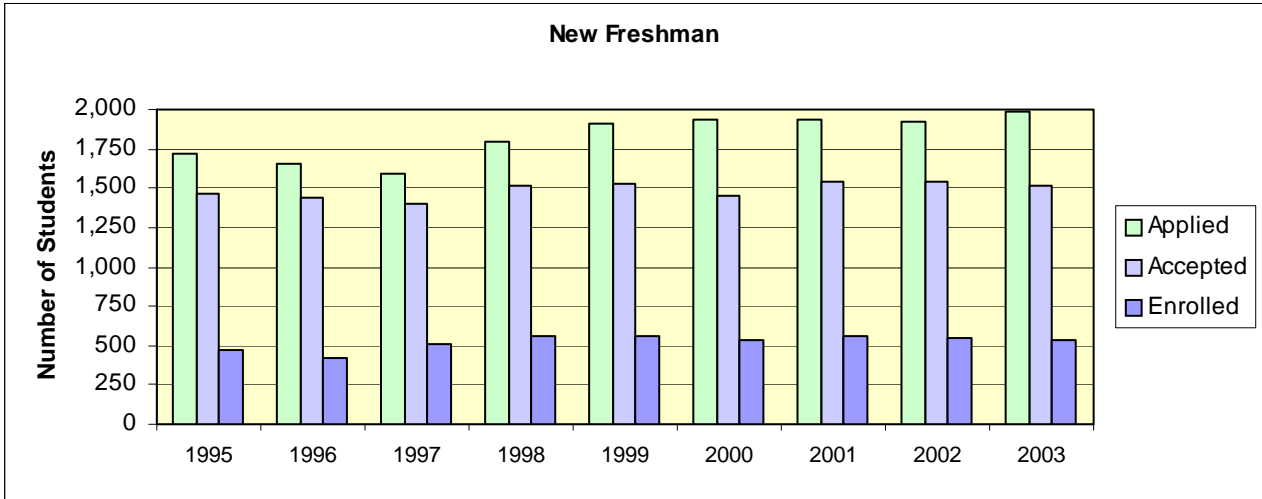
## First-time Freshmen & Transfers

(Source: Admission's Office "Entering Class Profile")

<b>Freshman</b>	<b>1995</b>	<b>1996</b>	<b>1997</b>	<b>1998</b>	<b>1999</b>	<b>2000</b>	<b>2001</b>	<b>2002</b>	<b>2003</b>
<b>Inquired*</b>	26,688	24,174	25,157	26,535	25,866	30,980	24,542	26,826	34,558
<b>Applied</b>	1,722	1,660	1,592	1,797	1,913	1,941	1,942	1,919	1,992
Accepted	1,463	1,435	1,396	1,521	1,523	1,456	1,545	1,542	1,510
Enrolled									
Men	214	193	219	237	228	252	244	222	240
Women	258	233	296	320	335	277	313	329	289
<b>TOTAL</b>	<b>472</b>	<b>426</b>	<b>515</b>	<b>557</b>	<b>563</b>	<b>529</b>	<b>559</b>	<b>551</b>	<b>529</b>
Yield rate for accepted students	32.3%	29.7%	36.9%	36.6%	37.0%	36.3%	36.2%	35.7%	35.0%
<b>Transfers</b>									
<b>Inquired</b>	2,026	1,919	1,739	1,782	1,696	1,771	1,815	1,929	1,421
<b>Applied</b>	339	306	327	290	344	397	359	293	334
Accepted	259	185	249	205	210	211	228	187	237
Enrolled									
Men	56	69	55	52	48	51	47	36	52
Women	94	63	92	68	72	79	72	76	79
<b>TOTAL</b>	<b>150</b>	<b>132</b>	<b>147</b>	<b>120</b>	<b>120</b>	<b>130</b>	<b>119</b>	<b>112</b>	<b>131</b>
	57.9%	71.4%	59%	58.5%	57.1%	61.6%	52.2%	59.9%	55.3%
<b>Special</b>	9	4	6	10	12	14	20	17	36
<b>TOTAL</b>	<b>631</b>	<b>562</b>	<b>668</b>	<b>687</b>	<b>695</b>	<b>673</b>	<b>698</b>	<b>680</b>	<b>696</b>

\* "Inquired" includes mailing lists purchased from College Board and other sources.

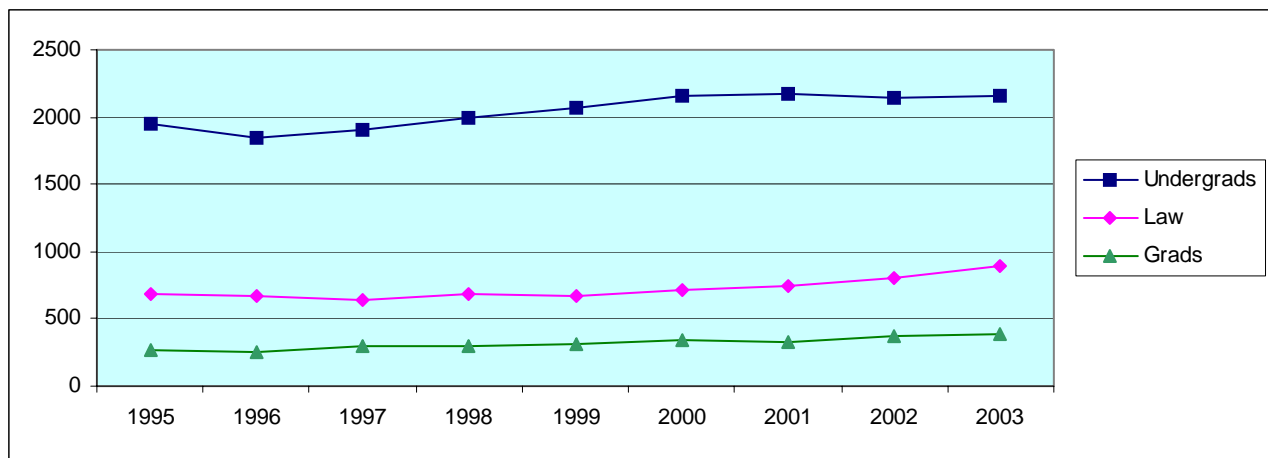




## Enrollment

### Headcount, Fall Semester (Historical)

	<u>1995</u>	<u>1996</u>	<u>1997</u>	<u>1998</u>	<u>1999</u>	<u>2000</u>	<u>2001</u>	<u>2002</u>	<u>2003</u>
<b><u>Full-time</u></b>									
Undergraduates	1891	1784	1840	1913	1965	2064	2063	2063	2070
Graduates	47	45	60	57	48	63	61	81	93
Post-Bacc	<u>20</u>	<u>21</u>	<u>8</u>	<u>9</u>	<u>13</u>	<u>6</u>	<u>6</u>	<u>5</u>	<u>4</u>
DeLand	1958	1850	1908	1979	2026	2133	2130	2149	2167
College of Law	<u>676</u>	<u>668</u>	<u>629</u>	<u>668</u>	<u>658</u>	<u>680</u>	<u>727</u>	<u>711</u>	<u>736</u>
<b>University (Full-time)</b>	<b>2634</b>	<b>2518</b>	<b>2537</b>	<b>2647</b>	<b>2684</b>	<b>2813</b>	<b>2857</b>	<b>2860</b>	<b>2903</b>
<b><u>Part-time</u></b>									
Undergraduates	59	67	68	74	97	91	111	79	91
Graduates	117	123	177	167	185	219	227	250	259
Post-Bacc	<u>83</u>	<u>68</u>	<u>59</u>	<u>68</u>	<u>72</u>	<u>48</u>	<u>37</u>	<u>30</u>	<u>27</u>
DeLand	259	258	304	309	354	358	375	359	377
College of Law	<u>3</u>	<u>8</u>	<u>16</u>	<u>11</u>	<u>15</u>	<u>28</u>	<u>23</u>	<u>99</u>	<u>159</u>
<b>University (Part-time)</b>	<b>262</b>	<b>266</b>	<b>320</b>	<b>320</b>	<b>369</b>	<b>386</b>	<b>398</b>	<b>458</b>	<b>536</b>
<b><u>Total</u></b>									
Undergraduates	1950	1851	1908	1987	2062	2155	2174	2142	2161
Graduates	164	168	237	224	233	282	288	331	352
Post-Bacc	<u>103</u>	<u>89</u>	<u>67</u>	<u>77</u>	<u>85</u>	<u>54</u>	<u>43</u>	<u>35</u>	<u>31</u>
DeLand	2217	2108	2212	2288	2380	2491	2505	2508	2544
College of Law	<u>679</u>	<u>676</u>	<u>645</u>	<u>679</u>	<u>673</u>	<u>708</u>	<u>750</u>	<u>810</u>	<u>895</u>
<b>TOTAL University</b>	<b>2896</b>	<b>2784</b>	<b>2857</b>	<b>2967</b>	<b>3053</b>	<b>3199</b>	<b>3255</b>	<b>3318</b>	<b>3439</b>



## Graduate Enrollment

	Fall 2001		Fall 2002		Fall 2003	
	FT	PT	FT	PT	FT	PT
DeLand Graduates	51	153	57	148	65	116
DeLand P-Bacc	<u>6</u>	<u>32</u>	<u>3</u>	<u>29</u>	<u>4</u>	<u>25</u>
DeLand Total	57	185	60	177	69	141
Celebration Graduates	8	35	24	57	28	78
Celebration P-Bacc	<u>0</u>	<u>4</u>	<u>2</u>	<u>1</u>	<u>0</u>	<u>2</u>
Celebration Total	8	39	26	58	28	80
MBA/JD	<u>2</u>	<u>40</u>	<u>0</u>	<u>45</u>	<u>0</u>	<u>65</u>
<b>Graduate Total</b>	<b><u>67</u></b>	<b><u>264</u></b>	<b><u>86</u></b>	<b><u>280</u></b>	<b><u>97</u></b>	<b><u>286</u></b>

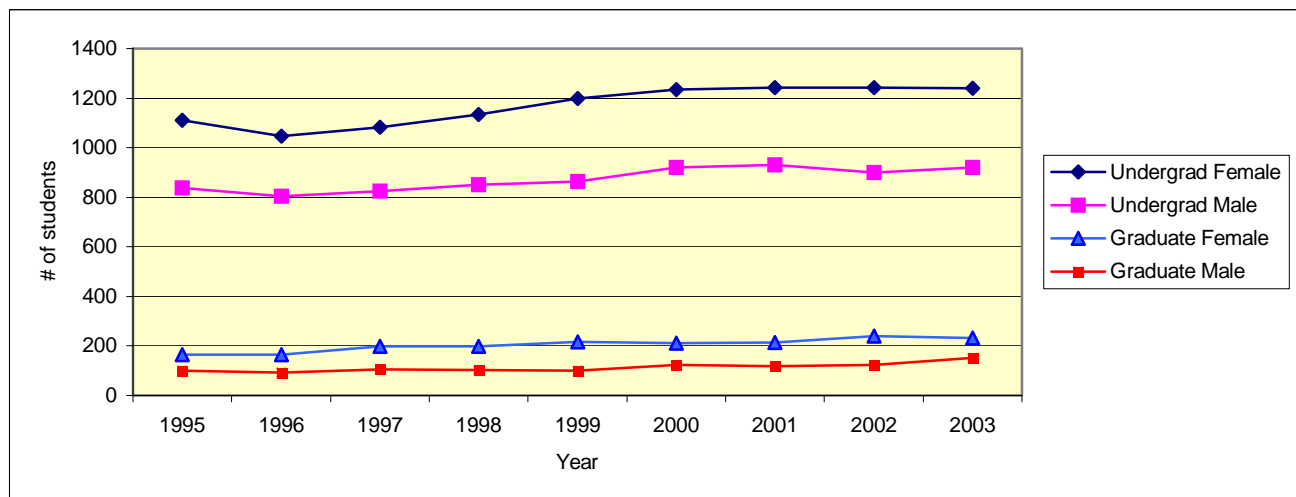
## Enrollment by Gender (Historical)

### Undergraduate Students

	1995	1996	1997	1998	1999	2000	2001	2002	2003
Male	838	804	824	852	864	921	931	900	920
Female	1112	1047	1084	1135	1198	1234	1243	1242	1241
Total	1950	1851	1908	1987	2062	2155	2174	2142	2161

### Graduate Students (excluding College of Law)

	1995	1996	1997	1998	1999	2000	2001	2002	2003
Male	101	93	106	102	101	124	118	125	151
Female	166	164	198	199	217	212	213	241	232
Total	267	257	304	301	318	336	331	366	383

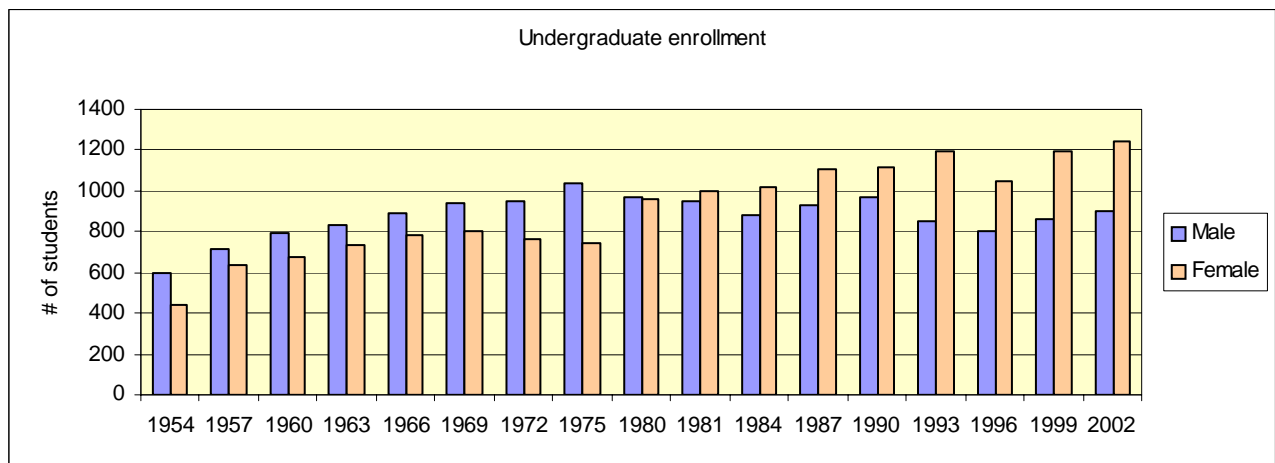
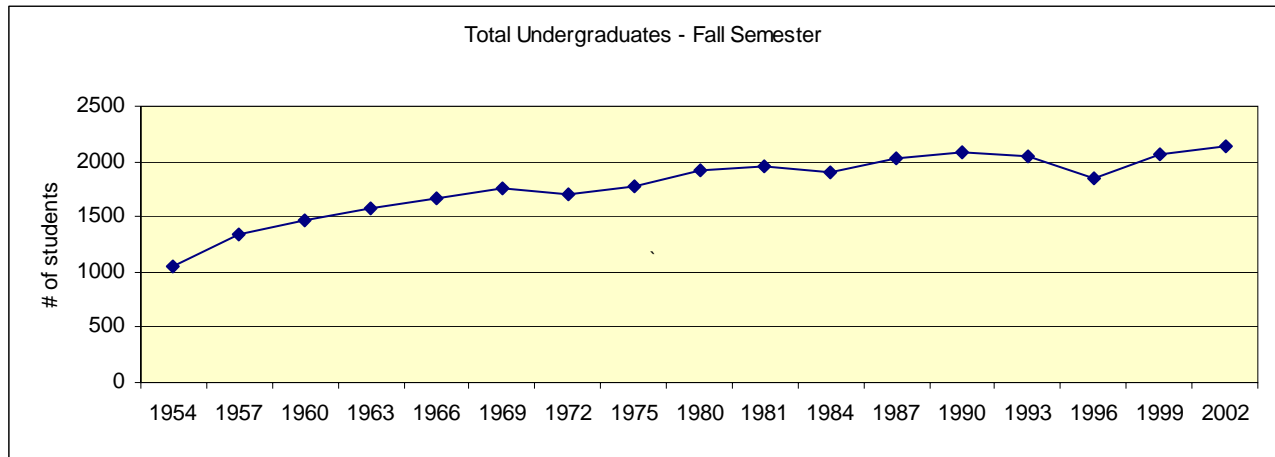


## Headcount, Fall Semester (Historical - 1954 to 2002)

## Undergraduate

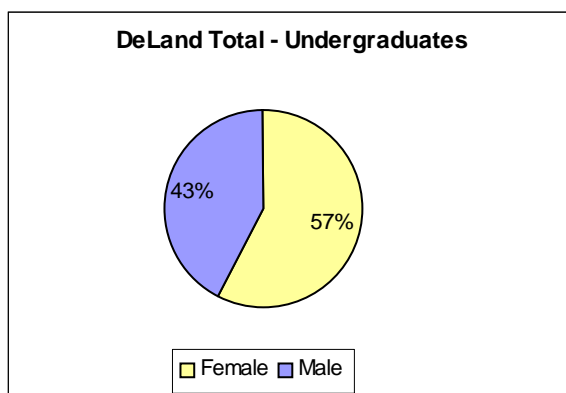
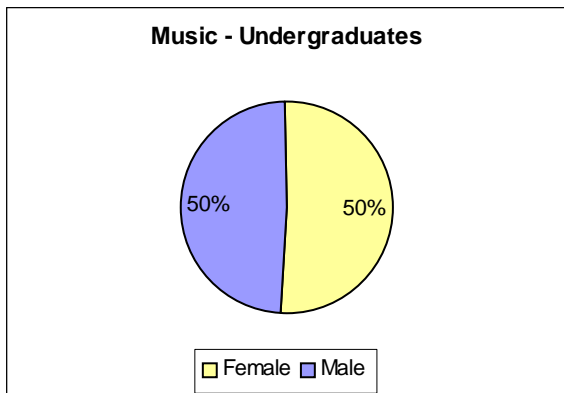
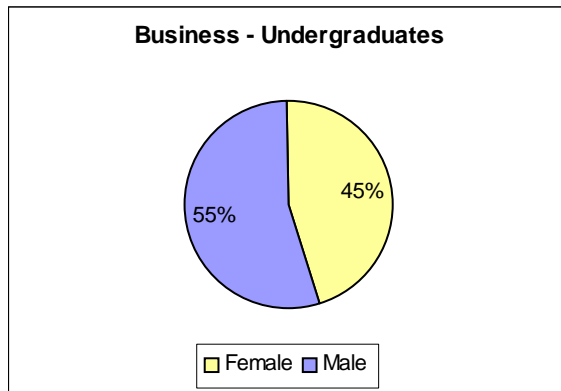
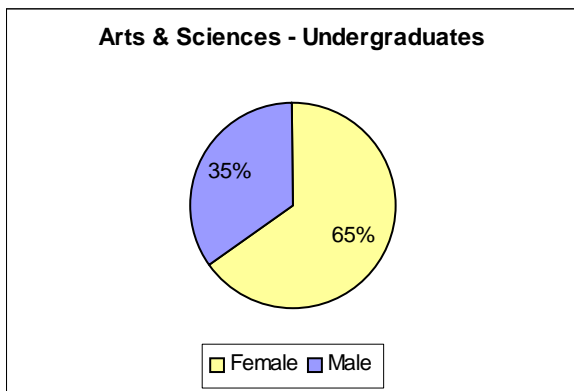
	Full-time			Part-time		
	Male	Female	TOTAL	Male	Female	TOTAL
Fall 1954	584	427	1011	14	17	31
Fall 1957	697	623	1320	14	11	25
Fall 1960	777	664	1441	15	12	27
Fall 1963	800	719	1519	31	18	49
Fall 1966	869	748	1617	24	34	58
Fall 1969	906	760	1666	38	46	84
Fall 1972	899	718	1617	47	45	92
Fall 1975	964	710	1674	71	38	109
Fall 1980	954	932	1886	18	23	41
Fall 1981	932	975	1907	22	22	44
Fall 1984	857	996	1853	25	25	50
Fall 1987	894	1081	1975	33	29	62
Fall 1990	943	1079	2022	30	39	69
Fall 1993	821	1143	1964	34	47	81
Fall 1996	783	1001	1784	21	46	67
Fall 1999	827	1138	1965	37	60	97
Fall 2002	868	1195	2063	32	47	79

Source: HEGIS and IPEDS Enrollment Reports



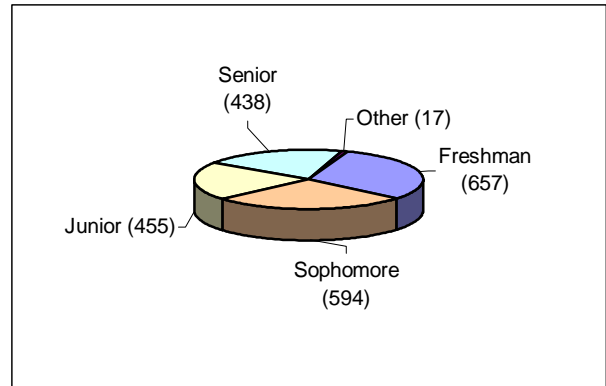
**College or School & Gender (Fall 2003)**

	<b>Female</b>	<b>Male</b>	<b>Total</b>
<b>Arts &amp; Sciences</b>			
Undergraduate	840	454	1294
DeLand Graduate	114	24	138
Celebration Graduate	47	19	66
<b>A &amp; S Total</b>	<b>1001</b>	<b>497</b>	<b>1498</b>
<b>Business</b>			
Undergraduate	298	365	663
DeLand Graduate	30	42	72
Celebration Graduate	16	26	42
Law-MBA Graduate	25	40	65
<b>Total</b>	<b>369</b>	<b>473</b>	<b>842</b>
<b>Music</b>			
Undergraduate only	103	101	204
<b>Law</b>	<b>485</b>	<b>410</b>	<b>895</b>
<b>Stetson Total</b>	<b>1958</b>	<b>1481</b>	<b>3439</b>



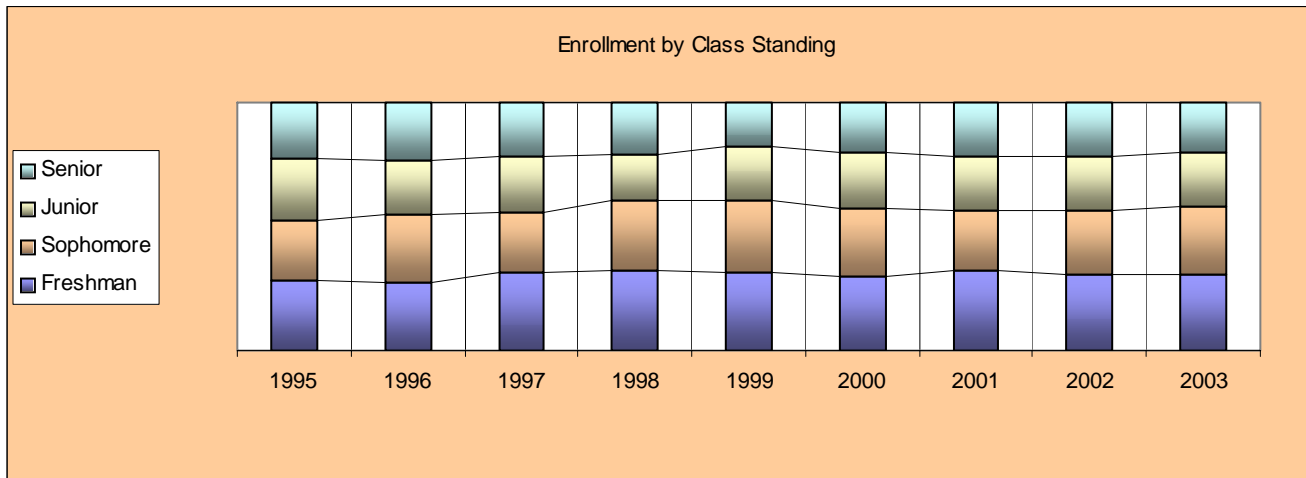
### Class Standing - Undergraduate (Fall 2003)

Headcount	Female	Male	Total
Freshman	357	300	657
Sophomore	353	241	594
Junior	271	184	455
Senior	250	188	438
Other	10	7	17
<b>TOTAL</b>	<b>1241</b>	<b>920</b>	<b>2161</b>



### Class Standings - Undergraduate (Historical)

	1995	1996	1997	1998	1999	2000	2001	2002	2003
Freshman	542	497	597	640	651	632	690	659	657
Sophomore	482	503	464	563	581	586	528	544	594
Junior	472	400	428	366	453	489	480	460	455
Senior	443	435	412	409	359	430	468	469	438
Other	11	16	7	9	18	18	8	10	17



## Ethnicity (Fall 2003)

	Undergraduate		Graduate & Post Bacc		Law	
	#	%	#	%	#	%
African American	77	3.6%	26	6.8%	52	5.8%
Native American	9	0.4%	1	0.3%	3	0.3%
Asian	45	2.1%	6	1.6%	25	2.8%
Hispanic / Latino	104	4.8%	20	5.2%	82	9.2%
White (US Resid)	1800	83.3%	300	78.3%	706	78.9%
Intl / Res. Alien	74	3.4%	10	2.6%	9	1.0%
Other / Unknown	52	2.4%	20	5.2%	18	2.0%

\*Resident status of students unknown

## Enrollment By Ethnicity - Undergraduate (Historical)

	Fall 1997	Fall 1998	Fall 1999	Fall 2000	Fall 2001	Fall 2002	Fall 2003
African American	74	75	72	76	80	73	77
Native American	7	9	8	10	14	10	9
Asian	40	31	30	39	45	47	45
Hispanic / Latino	88	97	99	108	123	109	104
White (US Resid)	1621	1664	1706	1766	1789	1766	1800
Intl / Non-Res. Alien	78*	111	147	156	87	71	74
Other / Unknown					36	66	52
Total	1908	1987	2062	2155	2174	2142	2161

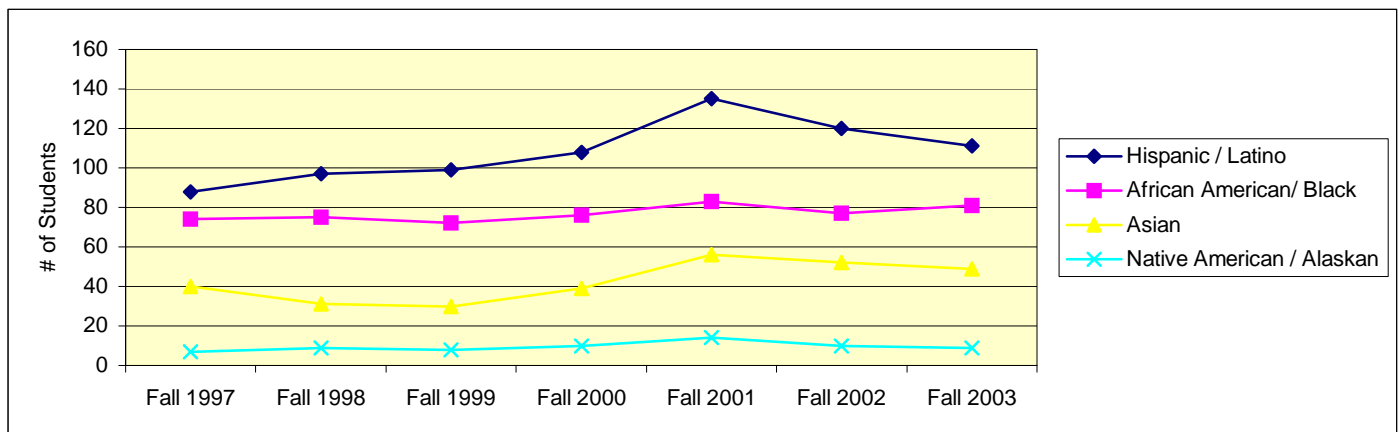
Source: IPEDS Enrollment Reports

\*Some International/Alien students were classified into specific ethnic groups

## ALANA Enrollment - Undergraduate (Historical)

(Ethnicity of all students, including non-residents, who do not consider themselves White/Caucasian)

	Fall 1997	Fall 1998	Fall 1999	Fall 2000	Fall 2001	Fall 2002	Fall 2003
Hispanic / Latino	88	97	99	108	135	120	111
African American/ Black	74	75	72	76	83	77	81
Asian	40	31	30	39	56	52	49
Native American / Alaskan	7	9	8	10	14	10	9



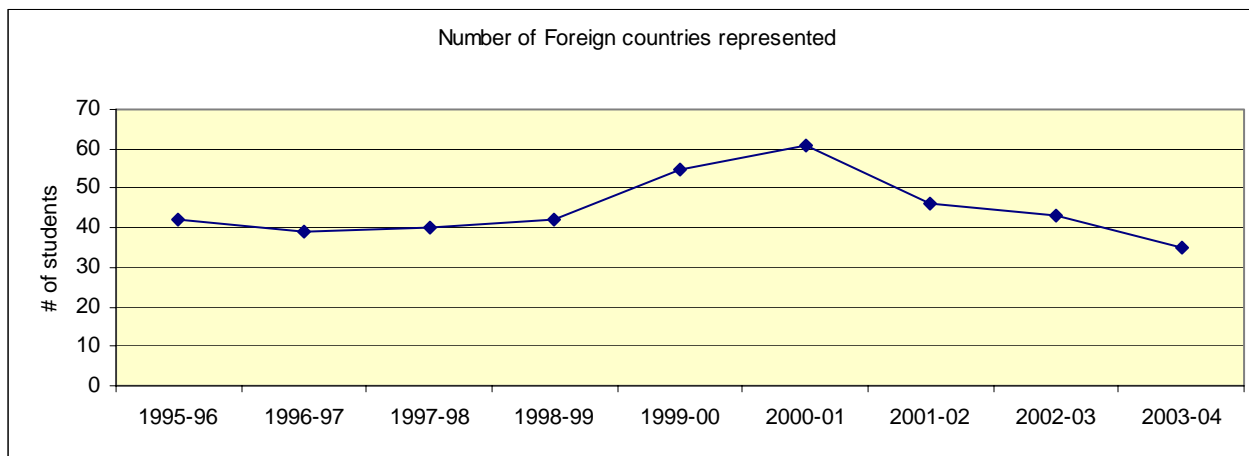


### International / Non-Resident Students Home country - Undergraduate (Fall 2003)

Norway	7	Japan	2	Aruba	1
Germany	6	Spain	2	Ghana	1
England	5	Austria	2	Honduras	1
Sweden	4	Kazakhstan	2	Uruguay	1
Jamaica	4	Brazil	2	India	1
Venezuela	3	Kyrgyzstan	2	Ireland	1
South Africa	3	Bermuda	1	Peru	1
Switzerland	2	Colombia	1	Iceland	1
Bulgaria	2	Taiwan	1	Nigeria	1
France	2	Bahamas	1	Costa Rica	1
Canada	2	Slovakia	1	Cayman Islands	1
Yugoslavia	2	Georgia	1		

### Number of Foreign Countries represented (Historical)

1995-96	1996-97	1997-98	1998-99	1999-00	2000-01	2001-02	2002-03	2003-04
42	39	40	42	55	61	46	43	35



# Enrollment by Home State - Fall 2003 (Undergraduates)



## Enrollment by Home State - Undergraduate (Historical)

	1995	1996	1997	1998	1999	2000	2001	2002	2003
Alabama	3	0	1	1	8	6	6	9	2
Alaska	0	0	0	0	1	1	1	1	0
Arizona	2	2	1	0	0	2	2	2	3
Arkansas	3	2	1	1	1	2	2	2	2
California	1	2	2	4	5	5	5	4	4
Colorado	5	2	8	5	3	2	1	4	6
Connecticut	23	15	19	21	26	27	24	33	24
Delaware	0	0	0	0	0	0	0	0	1
District of Columbia	1	2	2	0	0	0	1	0	1
Florida	1465	1399	1432	1510	1530	1606	1657	1594	1665
Georgia	51	33	32	39	45	40	52	51	39
Hawaii	0	1	1	0	0	0	0	0	0
Idaho							1	2	0
Illinois	6	12	12	16	15	16	16	11	16
Indiana	7	8	11	7	7	7	6	9	3
Iowa	0	1	4	4	3	2	0	2	0
Kansas	0	0	0	2	3	3	5	6	3
Kentucky	9	9	8	7	11	5	4	6	5
Louisiana	4	2	2	3	3	4	2	4	3
Maine	7	8	8	5	6	3	2	9	9
Maryland	12	13	16	14	12	9	14	18	17
Massachusetts	22	23	33	33	34	33	45	44	41
Michigan	8	12	8	6	6	2	2	3	2
Minnesota	4	4	5	3	3	4	4	4	3
Mississippi	2	1	1	2	2	3	3	2	3
Missouri	6	5	7	9	10	11	9	8	6
Nebraska	0	0	1	0	0	0	0	1	0
Nevada	0	0	0	2	2	1	0	0	0
New Hampshire	5	6	7	6	6	15	13	16	21
New Jersey	28	28	25	15	12	12	14	21	23
New Mexico	1	1	1	2	2	1	1	2	2
New York	49	43	46	47	45	41	47	47	30
North Carolina	8	6	11	11	9	12	10	11	6
North Dakota	0	0	0	0	0	0	1	0	0
Ohio	17	17	15	12	13	11	14	14	11
Oklahoma	4	2	1	2	2	4	5	4	3
Oregon	1	1	3	3	3	3	1	2	2
Pennsylvania	11	13	17	16	23	28	22	31	22
Puerto Rico	2	2	1	0	0	1	2	2	2
Rhode Island	8	7	10	5	3	4	4	8	7
South Carolina	5	6	5	10	12	11	12	13	15
South Dakota	0	1	0	1	1	1	1	1	0
Tennessee	10	8	10	10	9	9	11	14	18
Texas	4	9	10	15	13	17	16	17	11
Utah	0	1	1	1	1	0	3	3	2
Vermont	2	2	3	2	2	4	3	2	6
Virginia	14	12	7	3	7	14	17	19	14
Washington	5	2	1	1	1	1	1	2	1
West Virginia	1	1	1	1	1	1	2	1	2
Wisconsin	4	6	2	1	3	5	5	6	7
Armed Forces	1	0	1	0	3	1	3	3	0
	1821	1730	1793	1858	1907	1990	2072	2068	2063

## Undergraduate Enrollment by Florida County (Historical)

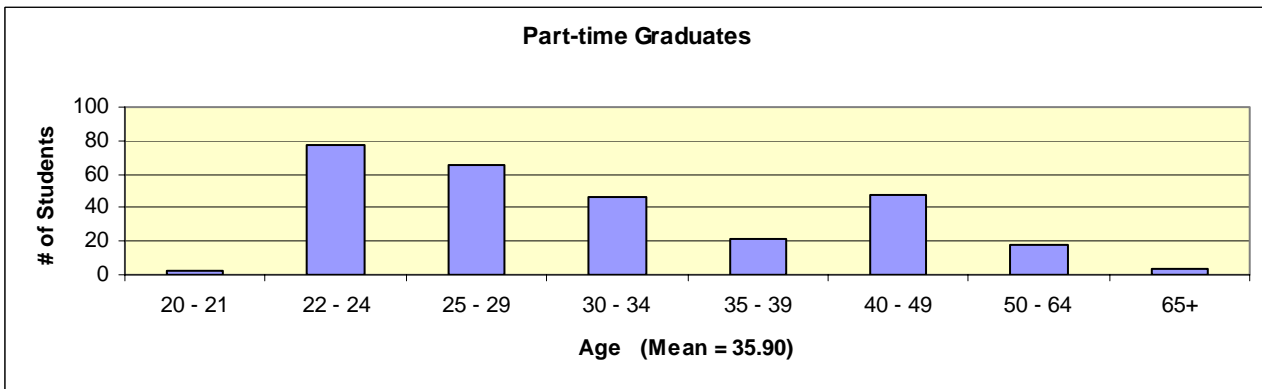
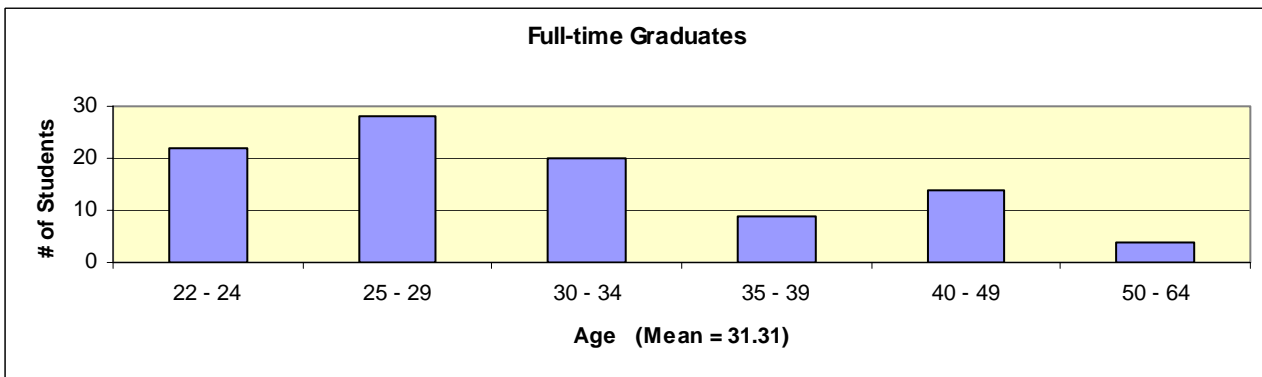
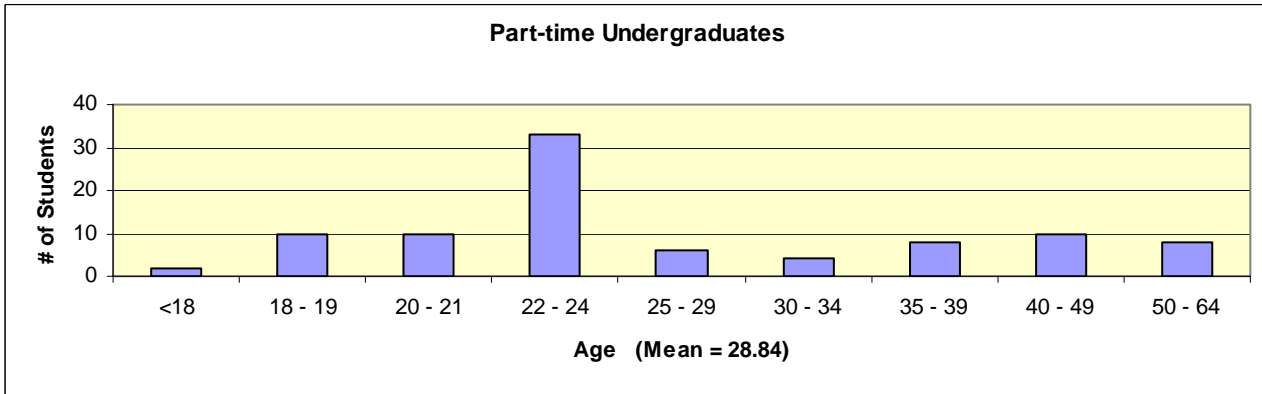
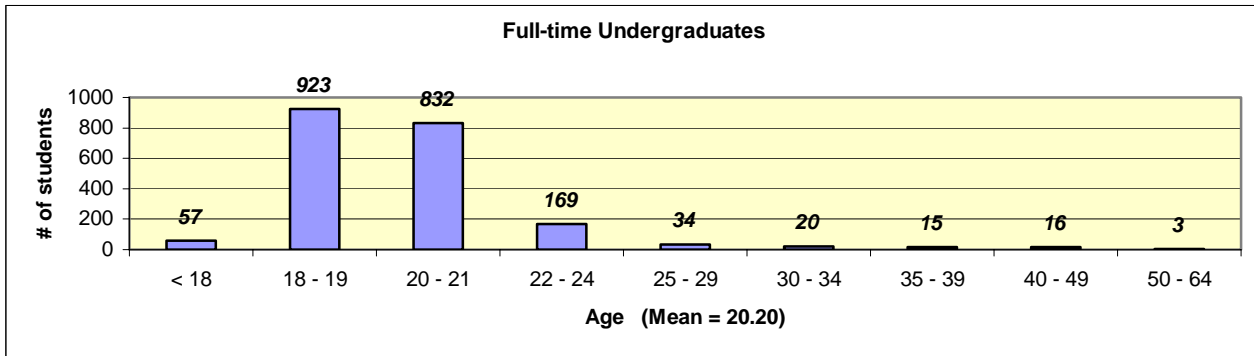
	1999	2000	2001	2002	2003
Alachua	17	15	10	13	15
Bay	11	10	10	12	9
Bradford	2	2	1	0	0
Brevard	68	73	71	66	82
Broward	59	73	62	63	60
Charlotte	13	11	10	8	10
Citrus	6	10	16	9	10
Clay	15	12	8	9	7
Collier	34	33	35	28	38
Columbia	4	3	2	2	1
Dade	32	27	24	30	33
Desoto	2	2	2	0	1
Dixie	2	2	2	0	1
Duval	44	46	50	53	65
Escambia	5	9	11	10	10
Flagler	18	17	21	18	19
Gadsden	1	2	1	0	1
Gilchrist	1	0	0	0	0
Gulf	2	2	4	2	1
Hardee	1	1	1	1	1
Hendry	1	1	0	1	1
Hernando	8	5	8	9	12
Highlands	8	9	5	4	5
Hillsborough	55	49	44	37	35
Indian River	35	36	35	26	23
Jackson	0	1	0	1	0
Jefferson	1	1	1	0	0
Lafayette	2	1	1	1	0
Lake	31	34	40	38	40
Lee	66	52	49	51	48

	1999	2000	2001	2002	2003
Leon	19	15	13	13	11
Levy	1	0	0	0	0
Madison	0	0	1	1	2
Manatee	17	17	17	17	17
Marion	29	27	33	35	33
Martin	22	33	29	25	20
Monroe	9	9	8	7	10
Nassau	2	2	2	3	4
Okaloosa	10	9	9	12	11
Okeechobee	0	0	1	1	1
Orange	106	96	112	123	128
Osceola	16	13	14	11	12
Palm Beach	58	74	89	87	101
Pasco	18	18	15	15	16
Pinellas	72	76	76	72	61
Polk	45	40	34	44	37
Putnam	10	7	7	8	3
Santa Rosa	2	2	4	5	7
Sarasota	43	49	53	35	31
Seminole	85	80	99	103	118
St. Johns	16	17	19	18	25
St. Lucie	26	25	24	21	24
Sumter	1	0	0	1	0
Suwannee	1	1	2	1	1
Taylor	1	0	0	0	0
Union	0	0	1	0	0
Volusia	376	447	468	420	426
Wakulla	0	0	0	0	1
Walton	1	1	0	0	0

## Enrollment by Religious Affiliation - Undergraduate (Fall 2003)

Anglican	9	Eastern Religions, Other	6	Others	44
Assembly of God	9	Episcopal	47	Pentacostal Holiness	8
Baptist	162	Evangelical Ref	2	Presbyterian	81
Brethren, Nonspec	1	Greek Orthodox	11	Protestant Christian	136
Buddhism	4	Hindu	5	Quaker	2
Catholic	329	Jain	1	Reformed	1
Christian Science	2	Jewish	26	Seventh Day Adventist	3
Church of Christ	14	Lutheran	54	Universalist	1
Church of God	5	Mennonite	4	Non Denominational	53
Christian & Mission Alliance	1	Methodist	108	No preference	533
Congregational	1	Morman Latter Day Saints	5	Unknown	473
Disciples of Christ	17	Muslim	3	<b>TOTAL</b>	<b>2161</b>

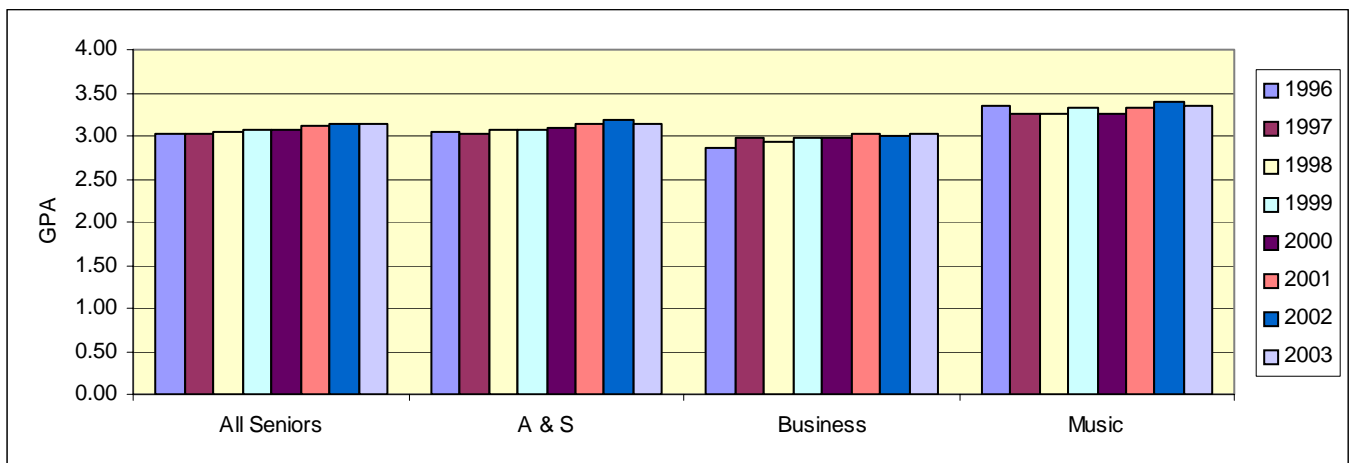
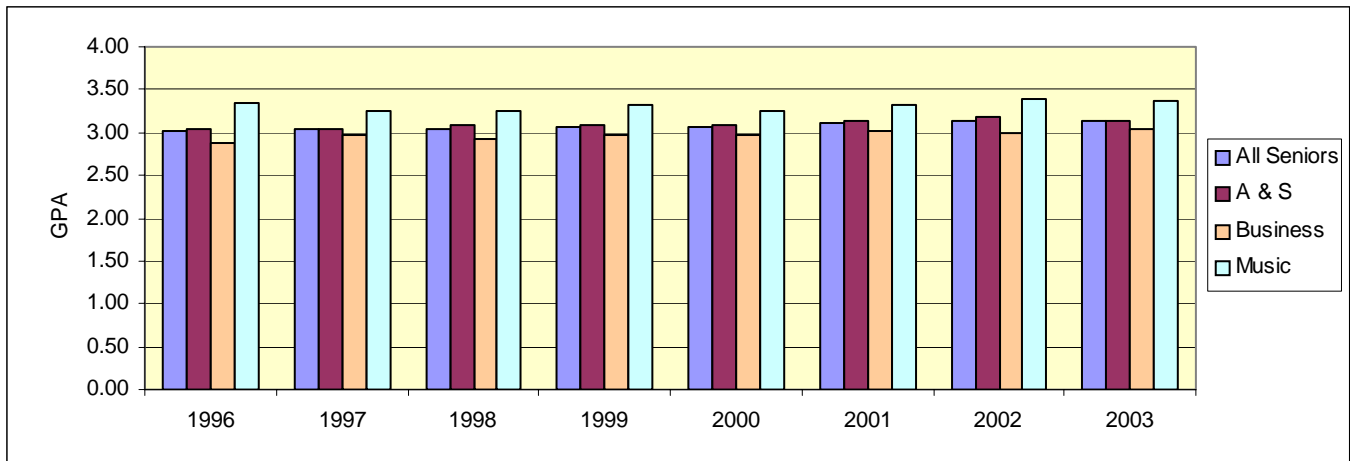
# Age Distribution (Fall 2003)



## Average Senior GPA's (Historical)

(Spring Semester)	1996	1997	1998	1999	2000	2001	2002	2003
All Seniors	3.02	3.03	3.05	3.07	3.07	3.11	3.14	3.13
Arts & Sciences	3.05	3.03	3.08	3.08	3.09	3.13	3.18	3.13
Business	2.87	2.97	2.92	2.97	2.98	3.02	2.99	3.03
Music	3.34	3.25	3.26	3.33	3.26	3.33	3.39	3.36

Spring 2003	All seniors	A & S	Business	Music
95th Percentile (Top 5%)	3.87	3.87	3.78	3.94
90th Percentile (Top 10%)	3.76	3.78	3.65	3.89
80th Percentile (Top 1/5)	3.60	3.61	3.53	3.75
75th Percentile (Top 1/4)	3.53	3.54	3.44	3.72
67th Percentile (Top 1/3)	3.43	3.44	3.25	3.60
60th Percentile (Top 40%)	3.28	3.29	3.16	3.53
50th Percentile (Top 1/2, median)	3.13	3.15	3.01	3.42
40th Percentile	2.99	3.01	2.89	3.32
25th Percentile	2.78	2.80	2.71	3.08



## Class Statistics

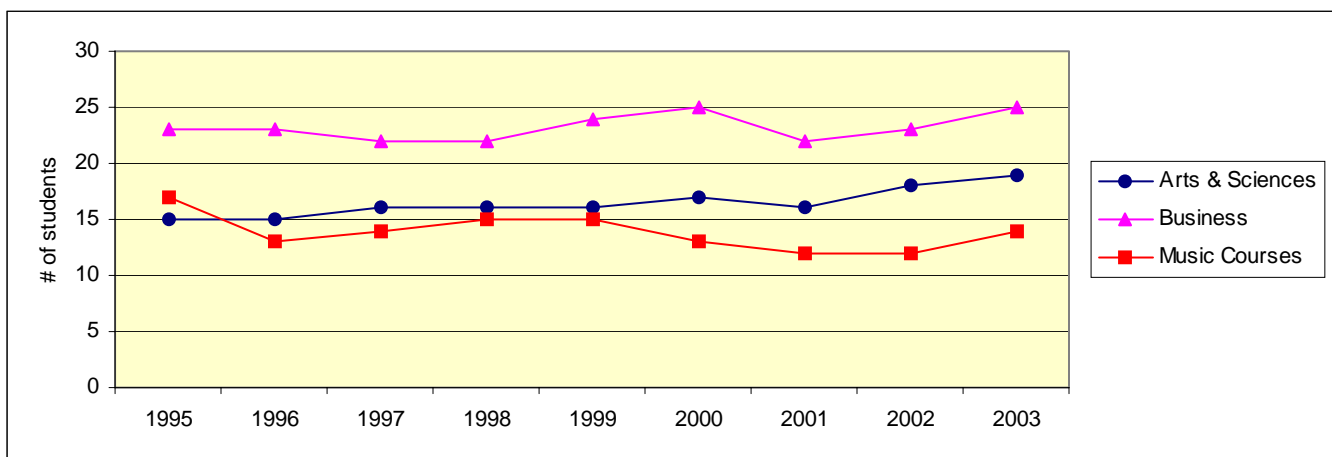
### Average Class Size - Undergraduate (Fall 2003)

	Lower Level	Upper Level	Combined
Arts & Sciences	23	13	19
Education	29	11	15
Humanities	19	12	17
Natural Sciences	26	11	20
Social Sciences	28	17	22
Business	29	23	25
Music Courses	16	11	14
Music Ensembles	20	14	17
Applied Music	3	2	2

Independent Study is excluded from the above. The number of Independent Study sections across all schools = 101.

### Average Class Size - Undergraduate (Historical)

	1995	1996	1997	1998	1999	2000	2001	2002	2003
Arts & Sciences	15	15	16	16	16	17	16	18	19
Education	15	14	13	14	12	14	13	12	15
Humanities	15	13	14	16	15	17	15	16	17
Natural Sciences	19	16	17	18	18	18	17	18	20
Social Sciences	18	18	18	18	17	21	19	22	22
Business	23	23	22	22	24	25	22	23	25
Music Courses	17	13	14	15	15	13	12	12	14
Music Ensembles	13	12	14	15	15	17	18	16	17
Applied Music	2	2	2	2	2	3	2	2	2



## **STUDENT LIFE**

### **Athletics**

#### **Intercollegiate Athletics**

Stetson is a member of the National Collegiate Athletic Association, and both men's and women's teams compete on a Division I level. Hatter basketball and baseball teams play national schedules and have achieved ranking as major powers.

##### **Men's Teams**

Baseball  
Basketball  
Crew  
Cross Country  
Golf  
Soccer  
Tennis

##### **Women's Teams**

Basketball  
Crew  
Cross Country  
Golf  
Soccer  
Softball  
Tennis  
Volleyball

#### **Intramural Program**

The Intramural Program offers young men and women the opportunity to manage, officiate, direct and participate in physical activities with the conviction that this participation will promote stability, coordination, sportsmanship, and a sense of leadership which will touch all aspects of their lives. The following sports are available to both men and women:

Basketball	Kickball	Table Tennis
Bowling	Outdoor Soccer	Tennis
Flag Football	Sand Volleyball	Ultimate Frisbee
Indoor Volleyball	Softball	Water Polo
Indoor Soccer	Swimming	

#### **Organizations and Clubs**

Stetson has many organizations open to all students, affording a variety of activity. Membership in some organizations is based upon special interests or academic achievement; others are primarily social.

#### **Social Organizations**

##### **Social Sororities**

Alpha Chi Omega  
Alpha Kappa Alpha  
Alpha Xi Delta  
Delta Delta Delta  
Pi Beta Phi  
Zeta Tau Alpha

##### **Social Fraternities**

Alpha Phi Alpha  
Alpha Tau Omega  
Lambda Chi Alpha  
Phi Sigma Kappa  
Pi Kappa Phi  
Sigma Nu  
Sigma Phi Epsilon  
Delta Sigma Phi



## **Honorary Organizations**

Beta Beta Beta (Biology)  
Gamma Sigma Epsilon (Chemistry)  
Gamma Theta Upsilon (Geology)  
Lambda Pi Eta  
Mortar Board  
Omicron Delta Epsilon  
Omicron Delta Kappa (Leadership)  
Order of Omega  
Phi Alpha Delta (Pre-Law)

Phi Alpha Theta  
Phi Beta Kappa (General)  
Phi Theta Kappa Alumni  
Pi Kappa Delta  
Pi Kappa Lambda (Music)  
Psi Chi (Psychology)  
Rho Lambda  
Sigma Delta Pi (Spanish)  
Sigma Pi Sigma (Physics)

## **Academically Related Organizations**

*College of Arts & Sciences*  
American Chemical Society  
American Medical Student Association  
Deutsch Club (German)  
Phi Alpha Theta (History)  
Society of Physics Students  
Stetson Russian Club  
Theta Alpha Phi (Theatre)

### *Education Program*

Chi Sigma Iota (Counseling)  
Florida Future Educators of America  
Kappa Delta Pi

### *School of Business*

Alpha Kappa Psi  
American Marketing Association  
Association for Computing Machinery  
Stetson Accounting Association

### *School of Music*

American Choral Directors Association  
Collegiate Music Educators Convention  
Phi Mu Alpha Sinfonia  
Sigma Alpha Iota  
Society of Composers, Inc.

## **Religious Organizations**

Baptist Collegiate Ministry  
Canterbury House  
Catholic Campus Ministry  
Chi Alpha Christian Fellowship  
Fellowship of Christian Athletes

Intersarsity Christian Fellowship  
Muslim Student Organization  
Student Religious Life Council  
Wesley House  
Young Life

## **Special Interest Organizations**

Asian Student Association  
Black Student Association  
Caribbean Club  
Chess Club  
Club Bridge  
College Bowl Team  
College Republicans  
Common Ground  
H.O.L.A. (Latin American)  
Indian Student Association

International Student Association  
Judo Club  
Martial Arts Club  
MedEx  
Model Senate  
Sailing Club  
Stetson Gerontological  
Stetson Rugby Club  
Stetson Young Democrats  
Stetson University Film Club

Stetson Gospel Choir  
Stetson Mentoring for Achievement  
Campaign  
Student Alumni Association  
Swim Club  
Student Ambassadors  
Student Athletic Advisory Board  
The Q.E.D. Club  
World Drum Club

## **Service Organizations**

Best Buddies

Circle K International

Epsilon Sigma Alpha

Habitat for Humanity

Into the Streets

Roots and Shoots

## **Campus Life Organizations**

Alcohol Advisory Board

Council for Student Activities (CSA)

Family Weekend

FOCUS

Greenfeather

Interfraternity Council (IFC)

Multicultural Student Council (MSC)

Panhellenic Council (PH)

Student Advisory Council

Student Government Association (SGA)

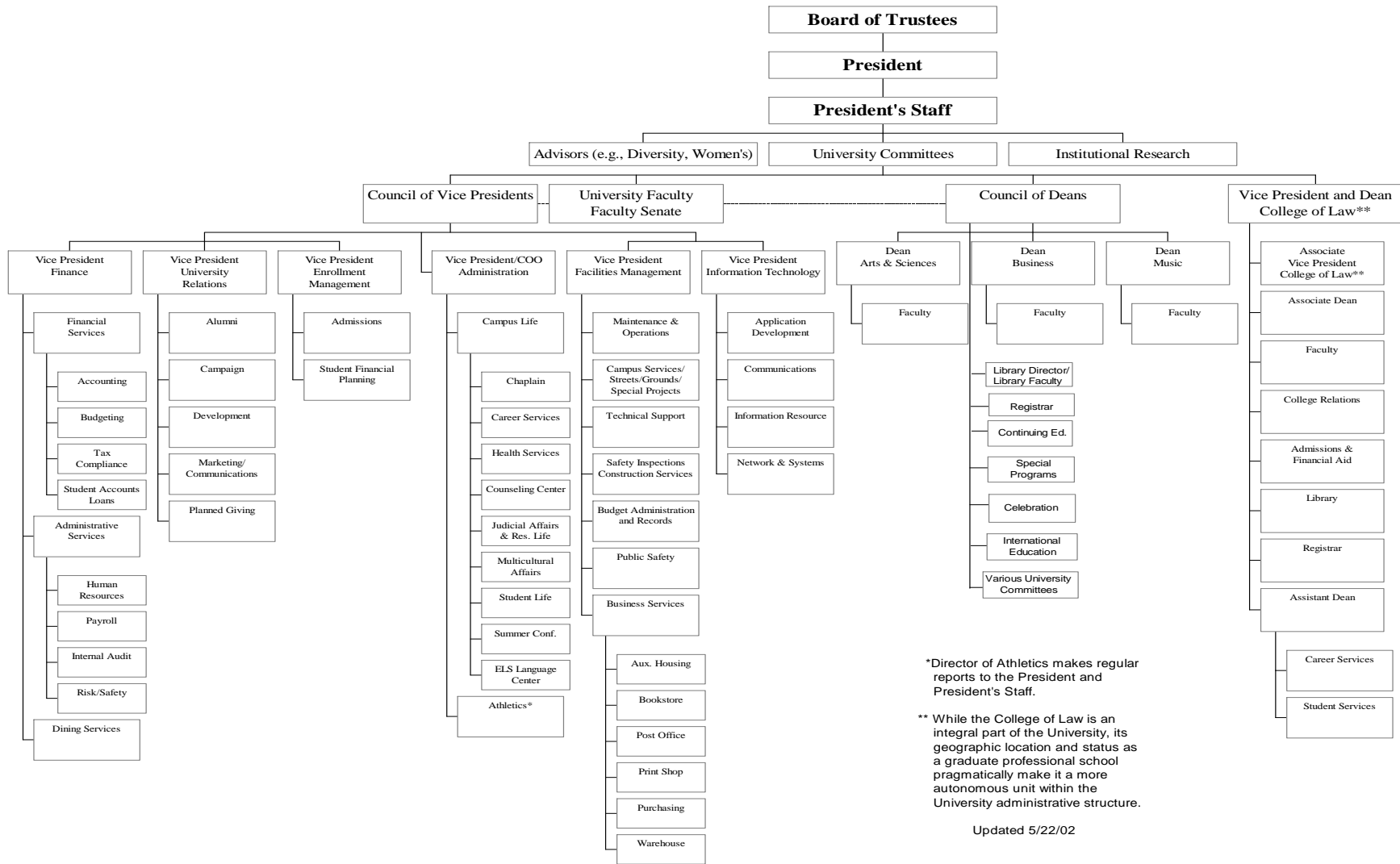
The Reporter (Newspaper)

Touchstone Literary Magazine / Poetry

At An Uncouth Hour



# STETSON UNIVERSITY ORGANIZATIONAL CHART 2003-04



\*Director of Athletics makes regular reports to the President and President's Staff.

\*\* While the College of Law is an integral part of the University, its geographic location and status as a graduate professional school pragmatically make it a more autonomous unit within the University administrative structure.

Updated 5/22/02

## Faculty

### Full-time Faculty - by Rank, Gender, Ethnicity

	NR/ Alien		Black, non-Hispanic		Asian / Pacific Islander		Hispanic		White, non-Hispanic		Other	Total
	Men	Wome	Men	Wome	Men	Wome	Men	Wome	Men	Wome		

As of 10/1/95

Professors			1						41	6		48
Associate professors					1		1		36	19		57
Assistant professors				3	1	3		3	28	16		54
Instructors/Lecturers						1			3	5		9
TOTAL			1	3	2	4	1	3	108	46		168

As of 10/1/97

Professors			1		1				38	6		46
Associate professors			1			1	2	2	32	25		63
Assistant professors				3	1	2			25	17		48
Instructors/Lecturers										1		1
TOTAL			2	3	2	3	2	2	95	49		158

As of 11/1/99

Professors			1				1		42	10		54
Associate professors			1	1		1		2	39	20		64
Assistant professors			1	3	1	1	1		13	20		40
Instructors/Lecturers								3	4	9		16
Other faculty			1						3	4		8
TOTAL			4	4	1	2	2	5	101	63		182

As of 11/1/01

Professors			1						47	12		60
Associate professors			1	3		2		2	35	18		61
Assistant professors		1	3	1	1		3		12	23		44
Instructors/Lecturers							1	3	7	12		23
Other faculty					1				5	2		8
TOTAL		1	5	4	2	2	4	5	106	67		196

As of 11/1/03

Professors			1						51	14		66
Associate professors			1	4		2	1	2	30	21		61
Assistant professors			2	1	2		1		18	19	1	44
Instructors/Lecturers								3	6	6		15
Other faculty	1				1				5	1		8
TOTAL	1		4	5	3	2	2	5	110	61	1	194

Source: IPEDS Fall Staff Survey

## Percent of Full-Time teaching Faculty with Terminal Degrees - Historical

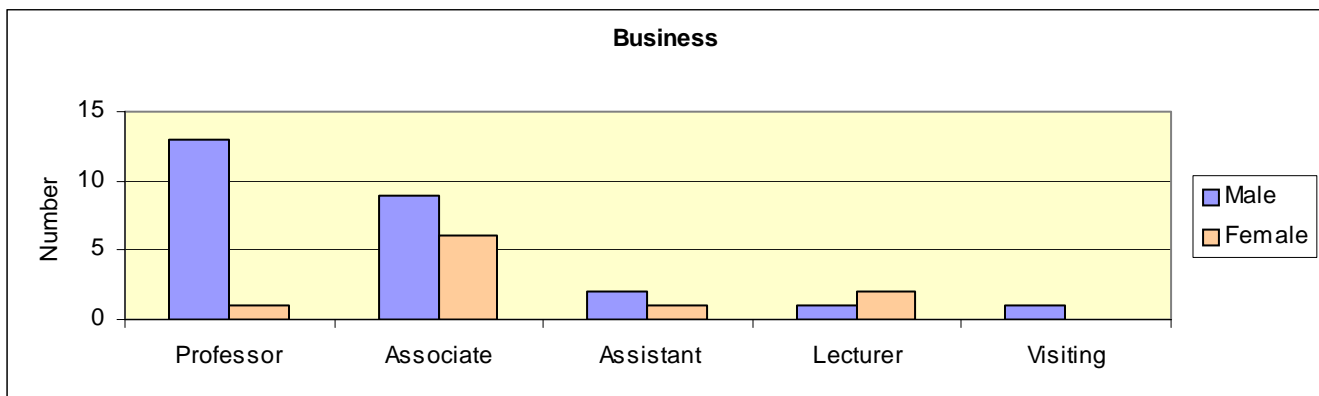
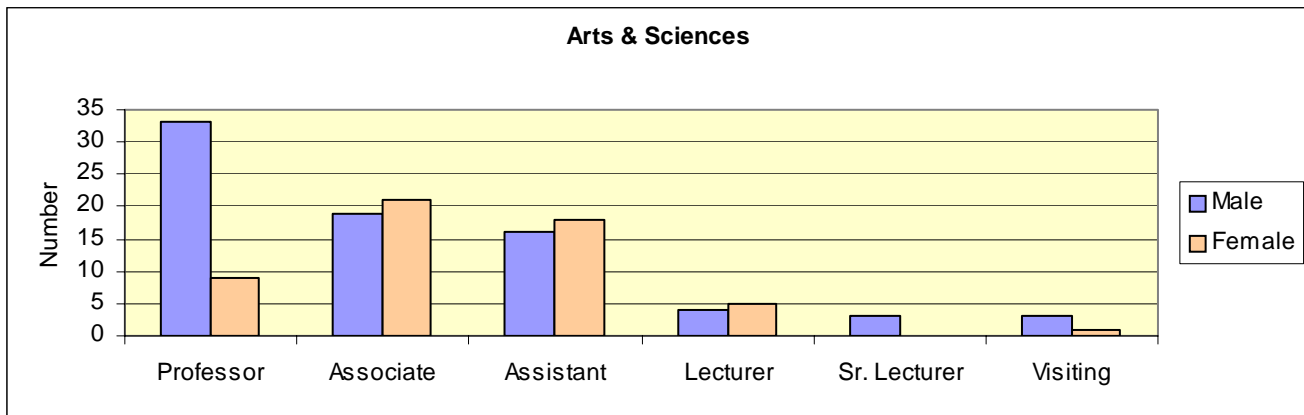
	1996	1997	1998	1999	2000	2001	2002	2003
Professors	100%	100%	100%	100%	100%	100%	100%	100%
Associate Professors	100%	100%	100%	98%	98%	98%	97%	97%
Assistant Professors	85%	98%	90%	80%	83%	84%	84%	82%
Instructors/Lecturers/Visiting Senior Lecturer	50%	38%	44%	50%	51%	54%	45%	52%
<b>TOTAL</b>	<b>93%</b>	<b>96%</b>	<b>90%</b>	<b>88%</b>	<b>87%</b>	<b>88%</b>	<b>88%</b>	<b>90%</b>

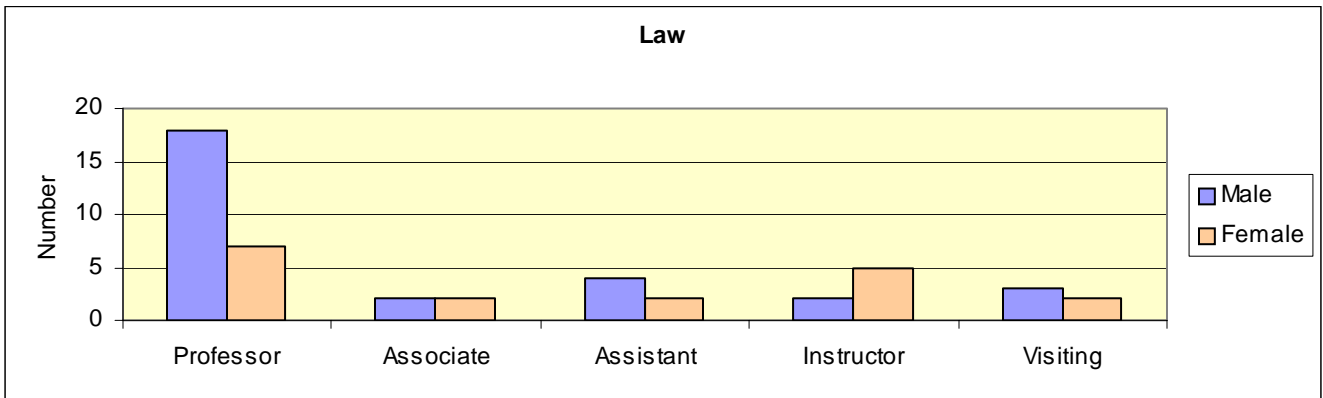
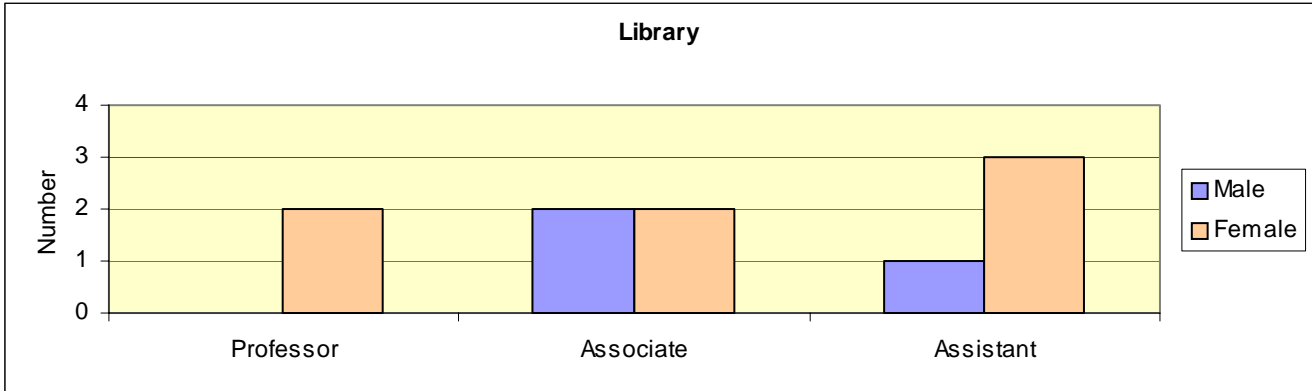
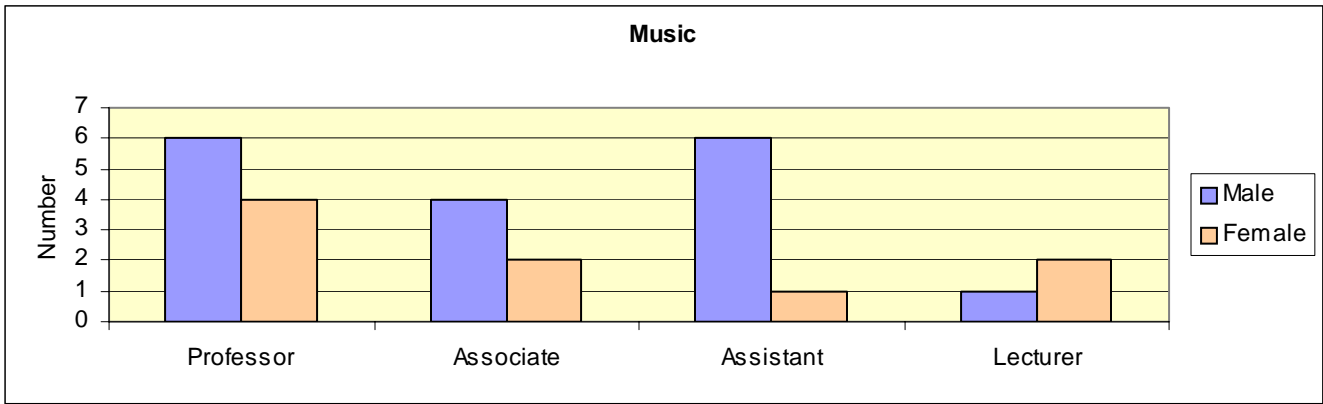
\*Not available

## Full-time Faculty By School and Gender (Fall 2003)

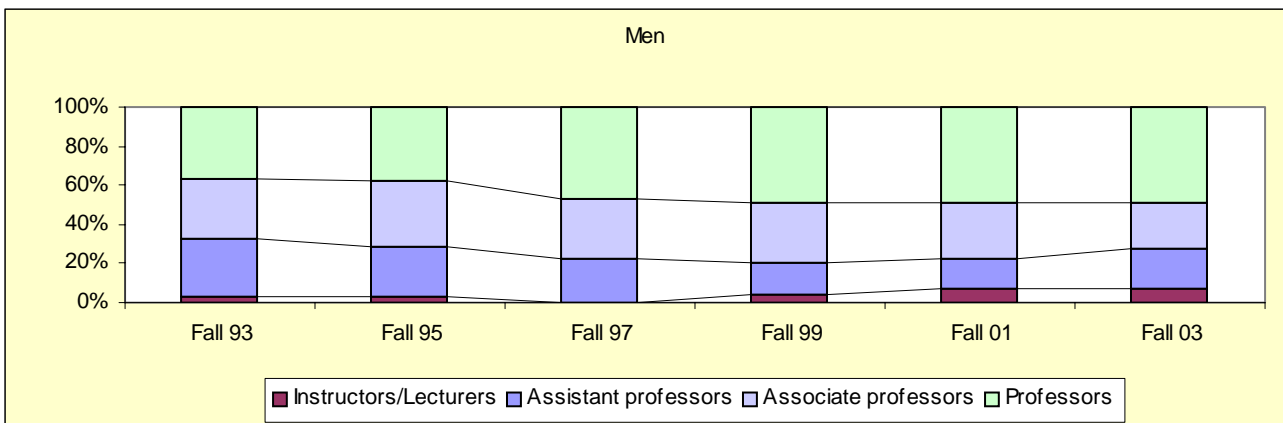
(includes Sabbaticals/Leaves)

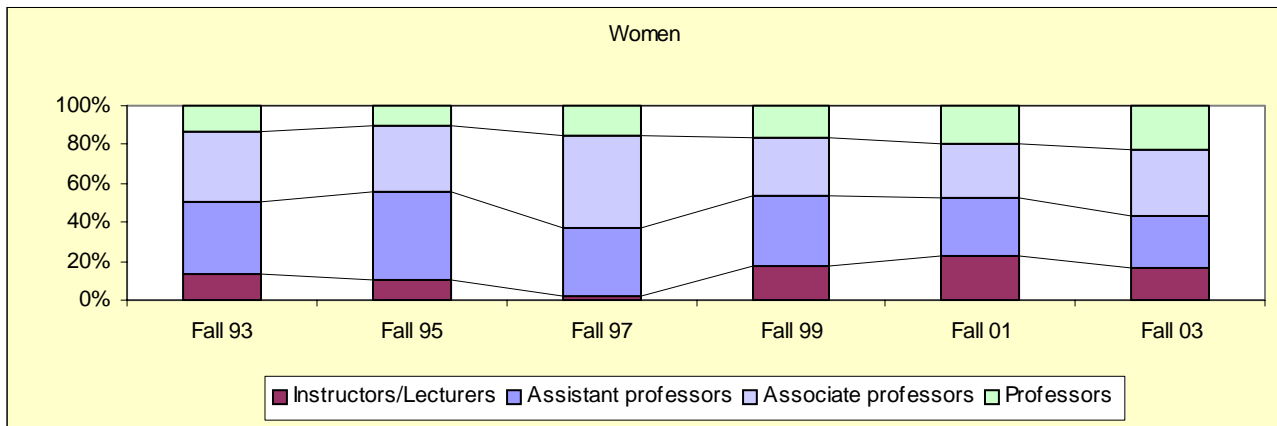
	Arts & Science		Business		Music		Library		Law	
	Male	Female	Male	Female	Male	Female	Male	Female	Male	Female
Professor	33	9	13	1	6	4		2	18	7
Associate	19	21	9	6	4	2	2	2	2	2
Assistant	16	18	2	1	6	1	1	3	4	2
Instructor									2	5
Lecturer	4	5	1	2	1	2				
Sr. Lecturer	3									
Visiting	3	1	1						3	2
<b>TOTAL</b>	<b>78</b>	<b>54</b>	<b>26</b>	<b>10</b>	<b>17</b>	<b>9</b>	<b>3</b>	<b>7</b>	<b>29</b>	<b>18</b>





## Full-time Instructional Faculty by Gender – Historical





Source: IPEDS Faculty Salary Survey

### Faculty-Student Ratio

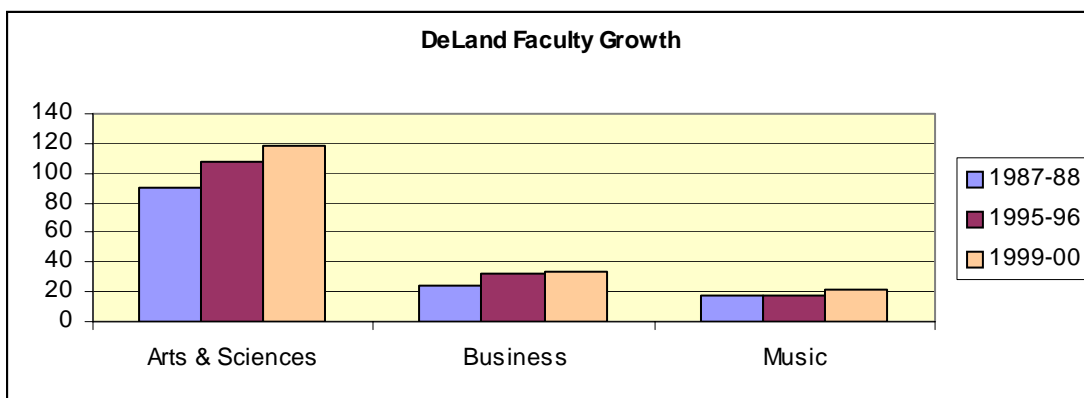
The table below shows the ratio of full-time equivalent undergraduate students to full-time equivalent instructional faculty for the fall semester.

Fall 1996	Fall 1997	Fall 1998	Fall 1999	Fall 2000	Fall 2001	Fall 2002	Fall 2003
10.7 to 1	10.6 to 1	10.5 to 1	10.5 to 1	10.4 to 1	*	10.7 to 1	11.1 to 1

\*not available

### DeLand Full-time Faculty Growth (1987-88 to 1999-00)

	1987-88	1995-96	1999-00	Net Gain Since 1987-88	Net Gain Since 1995-96
<b>Arts &amp; Sciences</b>	90	108	118	28	10
<b>Business</b>	24	32	33	9	1
<b>Music</b>	17.5	18	21	3.5	3
<b>TOTAL</b>	131.5	158	172	40.5	14





## Presidents of Stetson University

H. Douglas Lee	1987- Present
Pope A. Duncan	1977 - 1987
George R. Borders	(Acting) July, 1976 to July, 1977
John E. Johns	1969 – 1976 (Acting, June, 1969 to April, 1970)
Paul F. Geren	1967 – 1969
J. Ollie Edmunds	1948 – 1967
Harry C. Garwood (acting)	September to December, 1947
William Sims Allen	1934 – 1947
Charles S. Farriss (acting)	January to August, 1934
Lincoln Hulley	1904 – 1934
Charles S. Farriss (acting)	September 1903 to September 1904
Warren S. Gordis (acting)	September, 1895 to June, 1896
John F. Forbes	1885 – 1903

## Board of Trustees (2003-2004)

Cynthia R. Brown Daytona Beach, Florida	Mark C. Hollis Lakeland, Florida
J. Hyatt Brown Daytona Beach, Florida	R. Dean Hollis Omaha, Nebraska
S. Sammy Cacciatore, Jr. Melbourne, Florida	Jill Jinks Atlanta, Georgia (Chair, Business Board)
Max Cleland Washington, DC	Joseph W. Landers, Jr. Tallahassee, Florida (Board Chair)
Nestor De Armas Orlando, Florida	H. Douglas Lee DeLand, Florida
Diane Disney State College, Pennsylvania (Chair, Arts and Sciences Board)	Carroll E. Lewis Ocala, Florida
Michael Fronk Winter Park, Florida (Chair, Alumni Board)	Christine E. Lynn Boca Raton, Florida
Franklin T. Gaylord Eustis, Florida	M. Lee McGraw Osterville, Massachusetts
Dolly Hand Belle Glade, Florida	Richard A. McMahan DeLand, Florida
Robert E. Montgomery	Marsha Rydberg

Palm Coast, Florida

Earnest W. Murphy, Jr.  
Daytona Beach, Florida  
(Chair, Music Board)

Jane Edmunds Novak  
Ponte Vedra Beach, Florida

Terry J. Rhodes  
Tallahassee, Florida

David B. Rinker  
West Palm Beach, Florida

Tampa, Florida  
(Chair, Law Board)

David M. Strickland  
Jacksonville, Florida

Arthur P. Sullivan  
Palm Beach, Florida

Thomas F. Wands  
DeLand, Florida

Al Weiss  
Lake Buena Vista, Florida

### **Officers, Trustee Emeriti**

Mack N. Cleveland, Jr.  
Sanford, Florida  
(General Counsel)

Pope Duncan  
DeLand, Florida  
(Chancellor Emeritus)

Dennis C. McNamara, Sr.  
Orlando, Florida

John L. Pelham  
East Palatka, Florida

B. Frank Wheeler, Jr.  
Oviedo, Florida

Patricia M. Wilson  
Frostproof, Florida

## Academic and Administrative Officers

H. Douglas Lee  
*President*

James R. Beasley  
*Vice President for Administration and Chief  
Operating Officer*

Sally Dowling  
*Vice President for Finance*

David S. Noyes, Sr.  
*Vice President for Facilities Management*

Deborah Thompson  
*Vice President for Enrollment Management*

Susan Anderson  
*Executive Director for Alumni Relations*

Darby Dickerson  
*Interim Vice President & Dean of the College  
of Law*

Grady Ballenger  
*Dean of the College of Arts and Sciences*

Paul E. Dascher  
*Dean of the School of Business Administration*

James E. Woodward  
*Dean of the School of Music and  
Chair of the Council of Deans*

Dorothy E. Bressi  
*Associate Vice President of College Relations,  
College of Law*

Ronald D. Clifton  
*Associate Vice President and Director of  
Stetson University Center at Celebration*

Linda P. Davis  
*Vice President for University Relations*

Joseph J. Estenes, Jr.  
*Associate Vice President for Business and  
Operations, Director of Public Safety,  
College of Law*

## Academic Departments / Programs (2003-04)

### College of Arts & Sciences

#### **Department**

American Studies  
Art  
Biology  
Chemistry  
Communication Studies and Theatre Arts  
Counselor Education  
Economics  
English  
Geography & Environmental Science  
History  
Integrative Health Sciences/Sport Management  
Mathematics and Computer Science  
Modern Languages & Literature  
Philosophy  
Physics  
Political Science  
Psychology  
Religious Studies  
Sociology  
Teacher Education

#### **Chairs**

Emily Mieras  
Dan Gunderson  
Michael King  
Peter Hauck  
Kenneth McCoy  
Lynn Landis Long  
Neal Long  
Thomas Farrell  
Bruce C. Bradford  
Kimberly Reiter  
Michele Skelton  
Lisa Coulter  
Richard Ferland  
Ronald Hall  
Kevin Riggs  
Anne Hallum  
Toni Blum  
Mitchell Reddish  
Finnegan Alford-Cooper  
Adrienne Perry

#### **Special Programs**

Africana Studies  
Applied Ethics  
Aquatic and Marine Biology  
COSM\*S  
Digital Arts  
Environmental Sciences  
General Studies  
Health Care Issues  
Honors Program  
Humanities  
Institute for Christian Ethics  
International Studies  
Journalism  
Latin American Studies  
Russian Studies  
Stetson Institute for Social Research  
Women and Gender Studies

#### **Chair / Coordinator / Director**

Shawnrece Miller  
Ronald Hall  
Melissa Gibbs  
Terry Farrell  
Matthew Roberts  
Eric Perramond  
John Pearson  
Michele Skelton  
Ronald Hall, Toni Blum  
William Wayne Dickson  
Dixon Sutherland  
T. Wayne Bailey  
Michael W. McFarland  
Illiana Mankin  
Paul D. Steeves  
John K. Schorr  
Yves Clemmen

## **Advising Committees**

Pre-Health  
Pre-Law  
Grant and Fellowships  
Discovery  
Pre-Engineering

Michael King  
T. Wayne Bailey  
Karen Kaivola  
Lori Snook  
George Glander

## **School of Business Administration**

### **Department**

Accounting  
Decision and Information Sciences  
Finance  
Management  
Marketing

### **Special Programs**

Family Business Center  
Roland George Investments Program  
Joseph C. Prince Entrepreneurial Program  
Applied Statistics  
Director of Graduate Business Programs

### **Chairs**

Judson P. Stryker  
Betty M. Thorne  
Lawrence J. Belcher  
Monique Forte  
Michelle A. DeMoss (Fall 2003)  
Stephen T. Barnett (Spring 2004)

### **Chair / Coordinator / Director**

Gregory K. McCann  
Lawrence J. Belcher  
William A. Andrews  
Betty M. Thorne  
Frank A. DeZoort