

INTRODUCTION

Dear Stetson Community:

Much of the planning and evaluation necessary to improve the effectiveness of the University begins with an understanding of basic institutional facts. The *Stetson University Fact Book* is prepared annually by the Institutional Research Office to provide a better understanding of a variety of issues at Stetson. By sharing and discussing the information in this book, members of the Stetson community are able to more effectively contribute to the planning processes of the University.

Much of the information in this book can also be found on our website at www.stetson.edu/offices/iro. Generally, hardcopy editions of the *Fact Book* are published on a bi-annual basis while the information on the website is updated annually.

As you use this book, please let us know how future editions can be improved. On the last page is a short survey regarding the usefulness of this book. We would greatly appreciate you taking a few minutes to let us know what you think about this book.

Dr. John M. Tichenor
Director of Institutional Research

GENERAL INFORMATION

Statement of Institutional Purpose Approved by the Board of Trustees, February 4, 2000

I. Educational Mission

Our mission at Stetson University is to provide an excellent education in a creative community where learning and values meet, and to foster in students the qualities of mind and heart that will prepare them to reach their full potential as informed citizens of local communities and the world.

At Stetson, the art of teaching is practiced through programs solidly grounded in a tradition of liberal learning that stimulates critical thinking, imaginative inquiry, creative expression, and lively intellectual debate. The art of learning is enhanced through small interactive classes, close student-faculty alliances, and collaborative approaches that provide the foundation for rewarding careers and advanced study in selective graduate and professional programs. We embrace diverse methodologies to foster effective communication, information and technological literacy, and aesthetic appreciation. We encourage the development of informed convictions, independent judgment, and lifelong commitments to learning that are characteristic features of the enlightened citizen. In bringing together learning and values, the University encourages all of its members to demonstrate personal integrity; to develop an appreciation for the spiritual dimension of life; to embrace leadership in an increasingly complex, interdependent, and technological world; and to commit to active forms of social responsibility.

II. Values and Vision

From its founding, Stetson University has affirmed the importance of spiritual life and the quest for truth in its educational mission. The University motto, *Pro Deo et Veritate* (“For God and Truth”), is a symbol of this commitment, and it expresses our determination to integrate the pursuit of a liberal education with the search for meaning in our lives and in our communities.

Chartered as an independent and comprehensive university, Stetson has had an historical relationship with the Christian community and the Baptist denominations. That relationship has shaped our commitment to build an inclusive community. Today, the University includes persons from diverse religious, ethnic, cultural, economic, and intellectual backgrounds. It is thus from varying perspectives that members of the University community have joined together to affirm collectively

- the centrality of knowledge, examined ideas, and independent judgment in the life of an educated person;
- the inherent dignity, worth, and equality of all persons;
- the importance of community in human life;
- the role of religious and spiritual quests for meaning in human experience;
- the value of diverse persons and differing ideas in an educational community;
- the responsibility we share to work toward social justice;
- the necessity for decisions to be guided by ethics and social responsibility; and
-
-

- the obligation of individuals and communities to act as responsible stewards of the natural environment.

In our curriculum and co-curricular activities, then, we aim to infuse traditional liberal education with the values of religious and spiritual life, ethical decision-making, human diversity and commonality, gender equity, community service, and environmental responsibility. We aspire to develop distinctive, innovative, and interdisciplinary undergraduate and graduate programs that are centered on vigorous intellectual inquiry, informed by these values, increasingly global in perspective, and worthy of local and national recognition.

III. Heritage and Character

Florida's first private university, Stetson University was founded in 1883 by Henry A. DeLand, a New York philanthropist, as DeLand Academy. In 1887, the Legislature of the State of Florida enacted the Charter of DeLand University as an independent institution of higher learning. The university's name was changed in 1889 to honor John B. Stetson, the nationally-known hat manufacturer who gave generously of his time and means to advance the quality and reputation of the institution, and who served, with Mr. DeLand and others, as a founding trustee of the University. The first charter stated that the objective of the University should be "to promote the general interests of education, and to qualify its students to engage in the learned professions or other employments of society, and to discharge honorably and usefully the various duties of life." Stetson's first president, Dr. John F. Forbes, clearly described the commitment to teaching that has been a hallmark of the University throughout its history:

Buildings, libraries and apparatus are good and give added power, but the vital contact of students with a vigorous and stimulating mind and heart--this is the sine qua non of a successful education...The most important thing is to find men and women of large heart and mind, apt to teach and full of enthusiasm and stimulating power...to develop in the student the habit of independent judgment--of investigating statements and principles for oneself, and thus for oneself discover their truth or falsity.

Today, Stetson University is a non-sectarian, comprehensive, private university composed of individually strong undergraduate programs in various colleges and schools, and a selected group of academically distinctive graduate, professional, and continuing education programs. We seek academically talented individuals with leadership potential and records of personal growth and community service. We promote and support scholarly and creative activity among students, faculty, and staff as a means to enhance learning, teaching, and professional development, and as a contribution to the broader base of knowledge.

Accreditation

- ◆ Accredited by the Commission on Colleges of the Southern Association of Colleges and Schools (1866 Southern Lane, Decatur, Georgia 30033-4097, Telephone (404) 679-4501) to award the Bachelor's, Master's and Specialist in Education degrees in the College of Arts and Sciences; Bachelor's degrees in the School of Music; Bachelor's and Master's degrees in the School of Business Administration; and the Juris Doctor and the Master of Laws degree in the College of Law.
- ◆ American Assembly of Collegiate Schools of Business - The International Association for Management Education
- ◆ American Bar Association
- ◆ American Chemical Society
- ◆ National Association of Schools of Music
- ◆ National Council for Accreditation of Teacher Education
- ◆ Commission on Accreditation of Allied Health Education Programs

Historical Timeline

- 1883 Henry A. DeLand founds the DeLand Academy, November 5, originally housed in the First Baptist Church.
- 1884 DeLand Hall is completed, the first building in Florida to be continuously used for higher education.
- 1885 The institution becomes DeLand College, and John Franklin Forbes is named the first president. An affiliation with the Florida Baptist Convention is achieved.
- 1886 Stetson Hall (oldest residence hall in Florida) is occupied.
- 1887 The Florida legislature grants the charter to DeLand University defining a self-perpetuating Board of Trustees to be three-fourths Baptists with the president also to be a Baptist.
- 1889 The name is changed to John B. Stetson University, and Mr. Stetson becomes chairman of the Board of Trustees.
- 1892 Elizabeth Hall is built by Mr. Stetson--the north and south wings are completed in 1897.
- 1898 The *Florida Times Union* calls Presentation Day, February 10, "the most memorable day in...higher education" in Florida. President William R. Harper of the University of Chicago addresses the gathering leading to an affiliation (May 17) with Chicago until 1908. The University receives the wings of Elizabeth Hall, the Monroe Health Museum, and \$100,000 endowment Forbes has collected. This latter makes the University no longer dependent upon the largess of any one person.
- 1900 College of Law is founded as first law school in Florida.
- 1902 Flagler Hall becomes home of Law and Technology.
- 1904 The colorful Lincoln Hulley becomes president.
- 1907 Efforts by Baptists to change charter fail; Florida Baptist Convention founds Columbia College.

- 1908 Sampson Hall is constructed as the University's library.
- 1919 With the closing of Columbia College, a new agreement, the "Hulley-Rogers Agreement," is made with the Florida Baptist Convention giving it a voice in choosing trustees.
- 1932 Stetson joins Southern Association of Colleges and Schools. Hulley resists this action believing Stetson does not need this endorsement.
- 1934 President Hulley dies, January 20. Charles S. Farriss is named acting president. In August, William Sims Allen becomes the third president of Stetson.
- 1938 Most remembered football game, Stetson beats Florida, 16-14.
- 1943 Low point of enrollment during World War II, 362. With war's end, enrollment booms to 2,554 in 1947.
- 1947 President Allen's poor health causes him to resign in September; Dean Harry Garwood is named acting president.
- 1948 J. Ollie Edmunds assumes presidency, January 1, welcomed by William Hugh McEniry, Acting Dean, and Fred (Bud) Dickinson, President of Student Association.
- 1954 The beautiful Commons Building burns at Christmas. Carlton Union Building succeeds it (1957). College of Law moves to St. Petersburg.
- 1960 Stetson becomes first white college in Florida to admit a black student, Cornelius Hunter.
- 1963 Ford Foundation challenge grant of \$1,500,000 is largest single grant to that date. Matching funds are secured.
- 1964 The duPont-Ball Library is dedicated.
- 1967 President Edmunds resigns and Paul F. Geren becomes president.
- 1969 President Geren resigns; the day before his resignation is to take effect, he is killed in an automobile accident.
- 1970 Vice President John Johns, after serving as acting president, following President Geren's death, becomes the sixth president.
- 1974 Edmunds Center is built as a field house and multi-purpose assembly hall.
- 1976 President Johns goes to Furman University as president, and George Borders becomes acting chief administrator.
- 1977 Pope A. Duncan becomes Stetson's seventh president.
- 1978 A program of renovation of older buildings is inaugurated. Acquisition of Gillespie Museum property begins a series of real estate purchases to redefine the south boundary of the campus. Position of provost is established.
- 1979 Ten-year \$50 million campaign begins. The university's first \$1 million gift is committed by Kenneth Kirchman, trustee alumnus. The campaign is successfully concluded in five years, 1984.
- 1982- 83 Centennial of the University is celebrated with year-long activities. Gilbert Lycan's *Stetson University: The First 100 Years* is published. Phi Beta Kappa, Gamma of Florida, is installed as first chapter in a private university in Florida. Roland George Investments Program is begun. In 1989 the Roland and Sarah George Institute for Applied Investments is funded by a bequest in the will of Sarah George.

- 1984 Chancellor J. Ollie Edmunds dies. Master of Accountancy added. College of Liberal Arts becomes College of Arts & Sciences. School of Music adds Bachelor's degree in Musical Theatre.
- 1985 Stetson joins Trans America Athletic Conference and is a founding member of the women's New South Conference. The John T. Rosa bequest funds purchase of apartments at the College of Law. New Community School of the Arts is inaugurated.
- 1986 A master campus plan is developed.
- 1987 H. Douglas Lee, Executive Vice President, succeeds President Duncan as president and Duncan becomes Chancellor. The sorority houses are dedicated. A \$200 million fund campaign is approved. Hollis Leadership Development Program is funded. Major renovations begin at the College of Law.
- 1989 Griffith Hall, which houses admissions and financial aid, is completed. A master campus landscaping plan which begins the reforestation of Woodland Boulevard is approved.
- 1990 Law School team wins A.B.A. National Mock Trial Competition for second year in a row. The Lynn Center is purchased with a gift of \$3 million from E. M. Lynn, an alumnus. For the sixth year *U.S. News and World Report* ranks Stetson among the best comprehensive universities in the South. A new agreement is made with the Florida Baptist Convention reducing its role in Trustee nominations and reducing its financial support but continuing an affiliation.
- 1991 South African Archbishop Desmond Tutu, winner of the 1984 Nobel Peace prize, speaks out on global conflicts as the inaugural speaker of the James A. Stewart Lecture Series presented by Stetson's Institute for Christian Ethics. William M. and Nina B. Hollis Foundation Inc., makes a gift of \$4.5 million, \$4 million of which establishes a scholarship fund.
- 1992-93 In collaboration with Disney Development Company and the Osceola County School Board, Stetson plans a model school and teaching academy at Celebration. Former President Jimmy Carter gives the Stewart Lecture.
- 1993-94 The \$200 Million Campaign passes the \$106 million mark. A revised charter and by-laws reaffirm Stetson's identity as an independent institution. Baptist funding drops to \$17,000.
- 1994-95 Trustee Mark Hollis and his wife, Lynn, provide \$2.5 million toward the construction of a student activities center. The first School of Music Gala fills the 2,500-plus-seat Peabody Auditorium in Daytona Beach.
- 1995-96 In a message titled "On the Threshold of the 21st Century," Holocaust survivor, Nobel Peace Prize laureate and author Elie Wiesel presents the James A. Stewart Lecture. The College of Law is ranked first in the nation for its trial and appellate programs in the 1995 *U.S. News and World Report's* survey of graduate school programs. Stetson and the Florida Baptists terminate all formal and informal relationships. The endowment climbs to over \$80 million. In a formal inaugural ceremony, the Howard Thurman Program is established to integrate the works of scholars and community leaders to seek solutions to social, religious and ethnic problems.
- 1997-98 Named for Mark and Lynn Hollis of Lakeland, the \$4.3 million, 33,000-square-foot Hollis Center for fitness and recreation is dedicated.

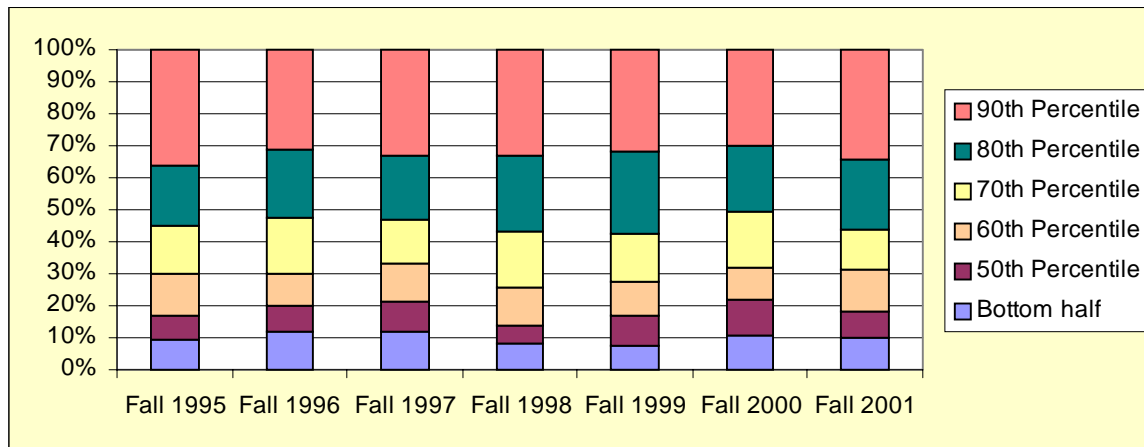
- 1998-99 Celebrated author and observer of the national scene with more than 30 years in print and broadcast journalism, Bill Moyers delivers the 1998 James A. Stewart Lecture, addressing the topic “Ethics for a New Millennium.” Six task forces are established within the university's newly formed Values Council as a means to develop strategic plans for implementing Stetson’s commitment to its core values. The council's activities and plans underscore the university’s mission to be an inclusive community, recognizing the dignity, worth and equality of all people. The Stetson College of Law opens a \$8.5 million Law Library and Legal Information Center that is one of the most technologically-advanced facilities of its kind in the Southeast, housing a 370,000-volume library collection and hundreds of network connections to access online legal resources.
- 1999 The opening of Melching Field at Conrad Park – a \$4.5 million state-of-the-art baseball stadium funded through a collaboration with Stetson, the City of DeLand and the DeLand Sports Redevelopment Association. Final phase of the \$200 Million Campaign, the largest fund-raising effort in Stetson’s history, begins during Stetson Weekend. The \$5.3 million expansion and renovation of the duPont-Ball Library is completed and dedicated. First annual Undergraduate Scholarship and Performance Day showcases students’ academic achievements in a campus-wide celebration open to the public.
- 2000 Author of the bestseller, *Reason for Hope: A Spiritual Journey*, and world-renowned primatologist Jane Goodall delivers the James A. Stewart Lecture. Christine Lynn of Boca Raton donates \$10 million for extensive renovations to the Eugene M. and Christine Lynn Business Center, which houses the School of Business Administration. Construction begins on the permanent home for the Stetson University Center at Celebration. Stetson acquires \$2.6 million Oscar Bluemner art collection.
- 2001 The \$200 Million Campaign concludes with a victory celebration during Stetson Weekend in January. The original goal of \$200 million was surpassed, with the campaign raising \$235,584,479. Stetson’s third campus, the \$7.2 million Stetson University Center at Celebration, opens its doors to students for the fall semester. Construction of the first phase of a \$2 million Amelia Avenue safety and beautification streetscape project is complete -- adding gates, brick pavers and landscaping to the roadway that borders the university.
- 2002 Historic Holler Fountain is brought back to life and beautifies the DeLand campus again with light and spray displays. The Roland George Investments Program team defends its national title at the student portfolio management competition. Stetson breaks ground for a women’s fastpitch softball complex. A \$12 million renovation of the Lynn Business Center is complete and the facility opens in the fall -- featuring technology-advanced classrooms and labs in a state-of-the-art facility. The Stetson College of Law opens a new student life center that houses offices for career services, student life and student organizations, as well as a lounge, fitness center and swimming pool. The law school also launches a part-time law program and breaks ground for a law center and campus in Tampa.

KEY INDICATORS

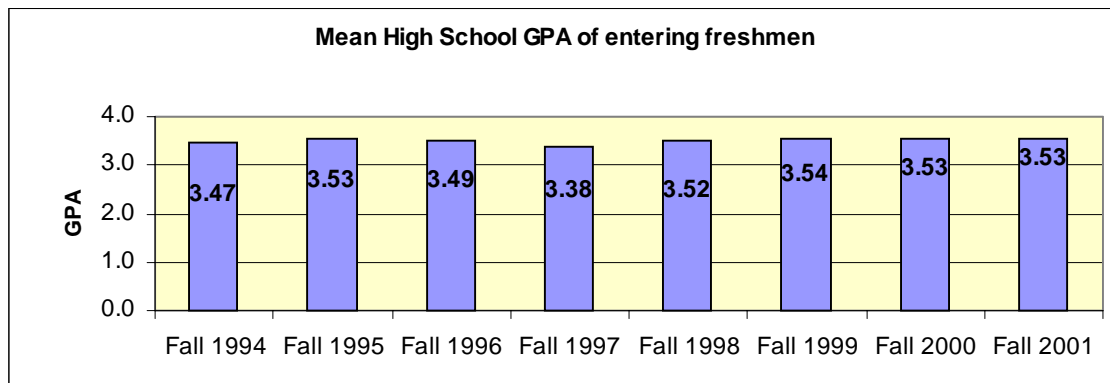
Two predictors of persistence and success in college are class rank and high school GPA. Stetson has consistently recruited high academic achievers, with approximately 30% of Stetson's incoming freshman graduating in the top 10% of their high school class.

High School Class Rank of New Freshmen

	Fall 1995	Fall 1996	Fall 1997	Fall 1998	Fall 1999	Fall 2000	Fall 2001
90th Percentile	36.0%	31.5%	33.0%	33.1%	31.7%	29.9%	34.1%
80th Percentile	55.2%	52.4%	53.0%	57.1%	57.2%	50.6%	56.4%
70th Percentile	70.1%	70.1%	67.0%	74.2%	72.4%	68.2%	68.6%
60th Percentile	83.0%	79.9%	78.6%	86.2%	83.1%	78.4%	81.9%
50th Percentile	90.5%	88.0%	88.0%	91.6%	92.5%	89.1%	89.7%
Bottom half	9.5%	12.0%	12.0%	8.4%	7.5%	10.9%	10.3%



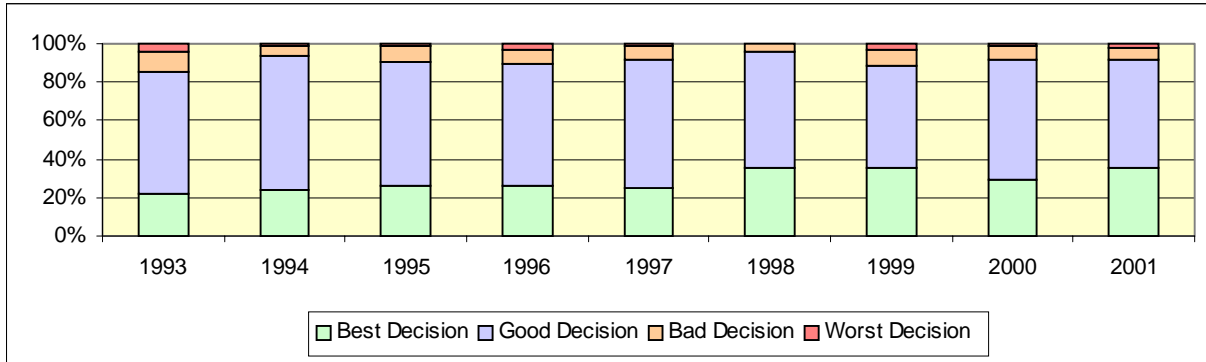
Mean High School GPA



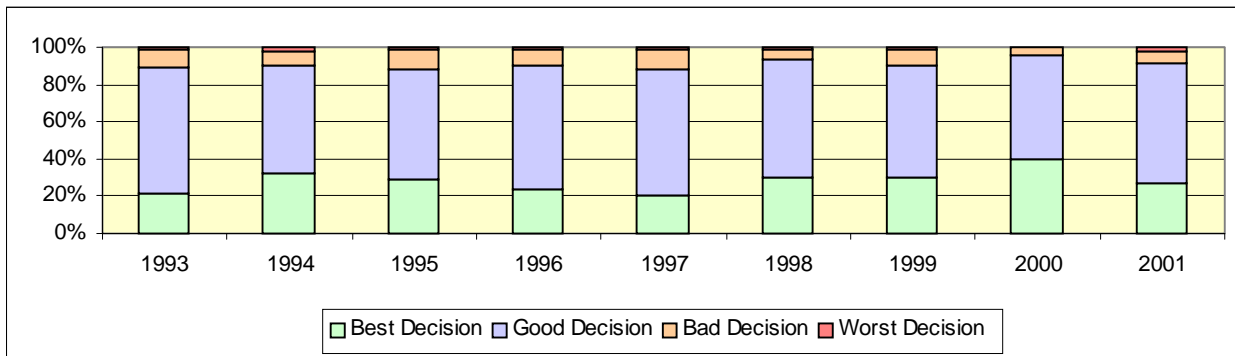
Decision to Attend Stetson

The Institutional Research Office surveys Stetson students at various points in their educational careers. The basic cycle of student surveys includes: 1) Admitted Student Survey (of attenders and non-attenders); 2) Student Satisfaction Survey of a random sample of Freshmen, Sophomore, and Juniors conducted each Spring; 3) Senior Survey of graduating students each Spring; and 4) bi-annual Alumni Survey of students who graduated five years prior to survey. From satisfaction with campus facilities to perspectives on university policies, these surveys examine a wide variety of issues. The graphs below present longitudinal results of the survey item, **“Thinking back on your decision to attend Stetson, how would you describe that decision now?”**

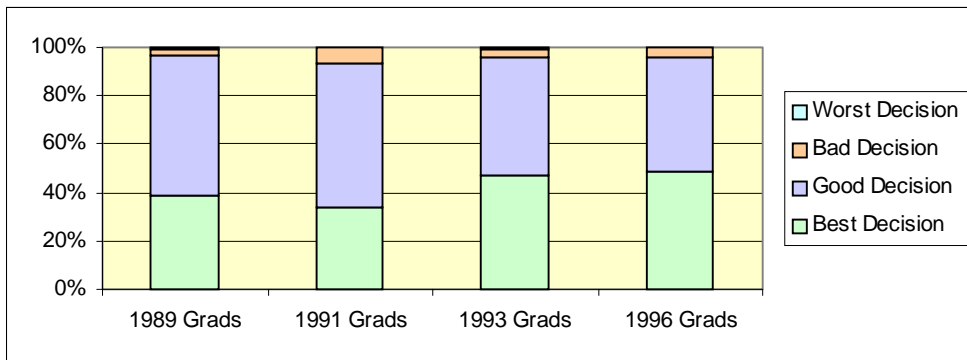
Student Satisfaction Survey



Senior Survey



Alumni Survey

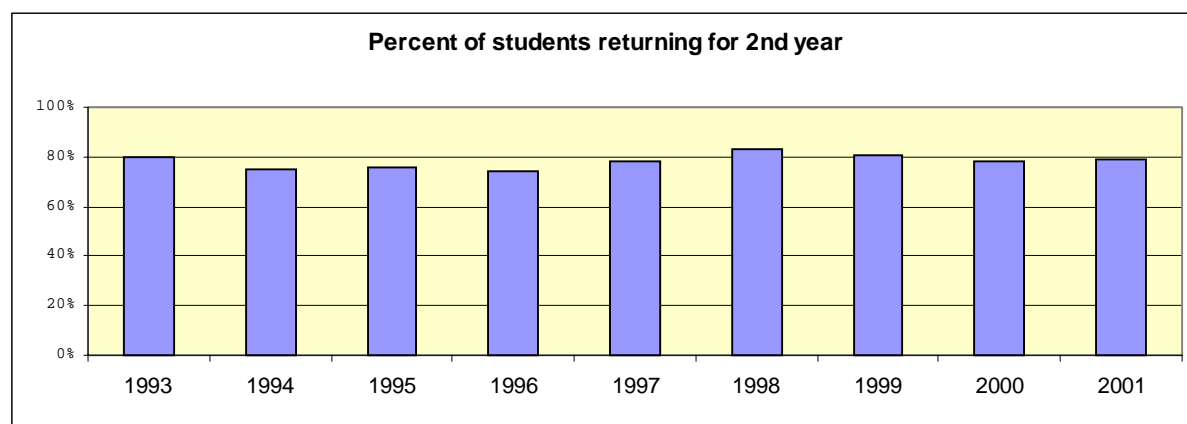


Student Retention Analysis

In the Fall of 2000, Stetson enrolled 510* new, first-time-in-college students. Seventy-nine percent of these students re-enrolled for classes in the Fall of 2001. The tables and graphs on this page describe longitudinal retention rates and characteristics of returners & non-returners.

Percent of New Students Returning for Second Year

1993	1994	1995	1996	1997	1998	1999	2000	2001
80%	75%	76%	74%	78%	83%	81%	78%	79%



Characteristics of Returning Students

		% returned Fall '00 (New - Fall 1998)			% returned Fall '01 (New - Fall 2000)		
		Initial cohort	# returning	%	Initial cohort	# returning	%
TOTAL		549	427	78%	510	401	79%
Gender	Female	326	254	78%	266	222	83%
	Male	223	173	78%	244	179	73%
Race	African American	22	19	86%	18	13	72%
	Latino/a	33	29	88%	31	22	71%
	Asian American	16	13	81%	15	13	87%
	Native American	4	4	100%	1	1	100%
	White	474	362	76%	445	352	79%
School	Arts & Sciences	346	260	75%	330	254	77%
	Business	161	131	81%	135	104	77%
	Music	42	36	86%	45	43	96%

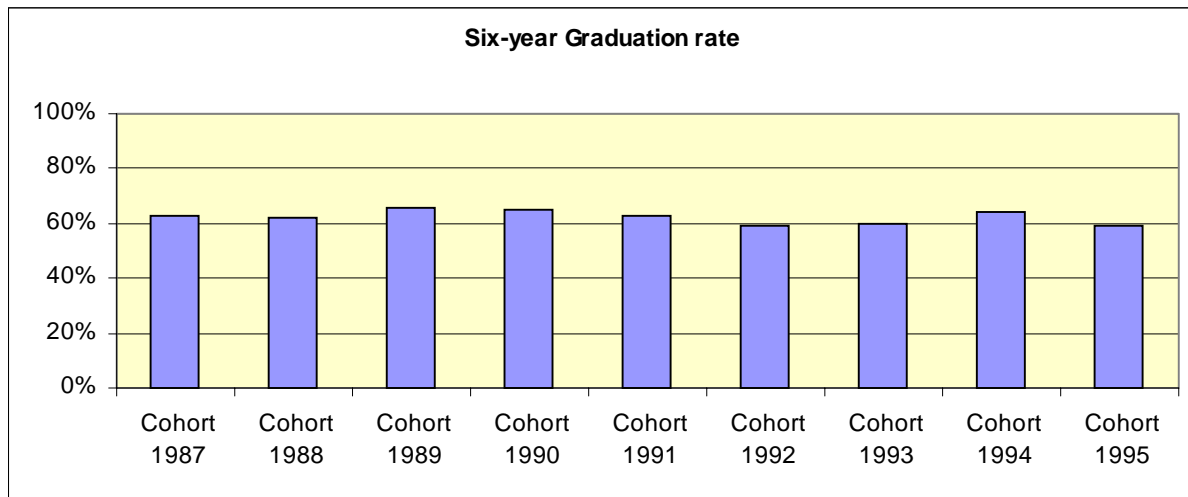
Cumulative GPA of returner and non-returners (Fall 2000 new students)

	Mean	Median	Std. Dev.
Returners	2.86	2.92	.67
Non-Returners	2.06	2.10	.96

*Enrollment as of 10/15/01

Graduation Rates

	New Freshmen	4-year	5-year	6-year
Cohort: 1987	493	51%	61%	63%
Cohort: 1988	548	47%	59%	62%
Cohort: 1989	492	53%	64%	66%
Cohort: 1990	408	55%	64%	65%
Cohort: 1991	460	52%	62%	63%
Cohort: 1992	501	46%	57%	59%
Cohort: 1993	483	49%	58%	60%
Cohort: 1994	474	54%	62%	64%
Cohort: 1995	464	49%	57%	59%



Senior Survey Statistics - Postgraduate Plans

The following statistics are from the HEDS Spring 2001 Senior Survey of 341 May 2001 graduates; 179 surveys were returned for a response rate of 52%.

Primary Activity After Graduation

	Percent
Employment Full-Time	60.2%
Employment Part-Time	.6%
Grad School Full-Time	26.5%
Grad School Part-Time	2.4%
Additional Undergraduate Coursework	2.4%
Volunteer Activity	1.2%
Traveling	1.2%
Undecided	3.6%
Other Activity	1.8%

Senior Survey Statistics - Postgraduate Plans, continued

Degree Desired

	Fall 2001 plans	Future plans*
Master's Arts and Science – M.A./M.S.	22.4%	31.9%
Master's Business – M.B.A.	27.6%	29.3%
Other Professional Master's Degree	3.4%	8.6%
Law Degree	19.0%	12.9%
Medical Degree	3.4%	3.4%
Ph.D.	12.1%	23.3%
Other Doctoral	5.2%	4.3%
Other Degree	6.9%	14.7%

*Multiple Responses Allowed

Subject Area of Planned Degree

	Fall 2001	Future		Fall 2000	Future
Business	36.1%	29.4%	Social Work	1.6%	4.9%
Law	18.0%	12.7%	Sociology	1.6%	2.0%
Psychology	13.1%	10.8%	English	1.6%	5.9%
Medicine	4.9%	4.9%	Political Science/Govt.	1.6%	4.9%
Physics	4.9%	1.0%	Health Related Field		3.9%
Fine/Performing Arts	1.6%	6.9%	Theology		3.9%
Mathematics	4.9%	1.0%	Foreign Languages		3.9%
Education	1.6%	9.8%	Economics		2.0%
Chemistry	3.3%	1.0%	History		2.0%
Biological/Life Sciences	1.6%	6.9%	Earth Science		1.0%
Communications, Media	1.6%	4.9%	Humanities		1.0%
Engineering	1.6%				

Long Term Career Plans

Business Owner, Proprietor, Entrepreneur	11.0%	Management	3.1%
Other	11.0%	Medicine, Health Care, Other	3.1%
College/Univ Teaching or Research	9.8%	Government, Politics, Public Policy	3.1%
Law	9.2%	Computer Prog, Science, Tech	2.5%
Undecided	6.1%	Foreign Serv, Diplomacy, Intl Rel	2.5%
Education, Teaching/Admin	4.9%	Finance	2.5%
Marketing, Sales	4.3%	Sports, Recreation	1.8%
Arts/Entertainment	4.3%	Religious Ministry or Service	1.8%
Accounting	3.7%	Physical Sciences	1.8%
Social Science or Services	3.1%	Envir. Science, Natural Resources	1.2%
Medical Doctor	3.1%	Homemaker	1.2%
Advertising, Public Relations	3.1%	Mathematics, Statistics	1.2%
		Broadcasting, Media Productions	.6%

Results from Alumni/ae Surveys

The HEDS *Alumni/ae Survey* conducted by the Institutional Research Office every two years offers insights into a variety of issues, including the outcomes of our general education program. The following table presents results from two cohorts of Stetson graduates (1991 and 1993) as well as graduates from peer institutions. The abilities/types of knowledge (e.g., write effectively, communicate well orally, etc.) are examined from two perspectives: 1) How essential are the abilities/type of knowledge in current personal and professional activities?, and 2) How did the undergraduate experience enhance the abilities/type of knowledge?

<i>Abilities/type of knowledge developed in Bach. Program</i>	Essential in current personal and professional activities				Enhanced Greatly by undergraduate experience			
	1991 Stetson Grads.	1993 Stetson Grads.	1991 Peer Grads.	1993 Peer Grads.	1991 Stetson Grads.	1993 Stetson Grads.	1991 Peer Grads.	1993 Peer Grads.
Write effectively	75%	67%	68%	72%	44%	49%	57%	57%
Communicate well orally	84%	84%	81%	84%	40%	55%	41%	47%
Acquire new skills / knowledge on my own	71%	74%	72%	72%	41%	46%	50%	46%
Think analytically and logically	76%	73%	73%	75%	48%	47%	55%	52%
Formulate creative/original ideas & solutions	64%	61%	66%	62%	33%	36%	40%	32%
Lead & supervise tasks & groups of people	60%	51%	51%	50%	32%	33%	25%	26%
Relate well to people of different races, nations, & religions	56%	58%	55%	54%	22%	27%	36%	20%
Function effectively as a team member	65%	66%	62%	64%	42%	39%	32%	36%
Use quantitative tools (e.g., statistics, graphs)	20%	21%	19%	25%	20%	21%	15%	18%
Use computers	64%	69%	58%	63%	28%	25%	22%	20%
Identify moral and ethical issues	34%	32%	31%	32%	22%	17%	31%	21%

1991 peer group contains results from Hamline, Oberlin, and Univ. of Puget Sound.

1993 peer group contains results from Rollins College, Univ. of Puget Sound, Wake Forest, and Hamline.

Source: HEDS Alumni/ae Surveys conducted in 1996 and 1998

Tuition and Fees

Stetson - Historical

Year	Undergraduate			Per Credit Hour Fees	
	Tuition	Fees	Total	U-Grad	Graduate
1990 - 1991	\$8,900	\$385	\$9,285		\$200
1991 - 1992	\$9,610	\$410	\$10,020	\$320	\$215
1992 - 1993	\$10,660	\$450	\$11,110	\$355	\$235
1993 - 1994	\$11,510	\$485	\$11,995	\$385	\$255
1994 - 1995	\$12,315	\$555	\$12,870	\$410	\$275
1995 - 1996	\$13,110	\$590	\$13,700	\$440	\$295
1996 - 1997	\$14,100	\$635	\$14,735	\$470	\$315
1997 - 1998	\$15,100	\$665	\$15,765	\$500	\$350
1998 - 1999	\$15,850	\$800	\$16,650	\$525	\$370
1999 - 2000	\$16,640	\$870	\$17,510	\$550	\$390
2000 - 2001	\$17,475	\$910	\$18,385	\$580	\$410
2001 - 2002	\$18,350	\$960	\$19,310	\$610	\$430

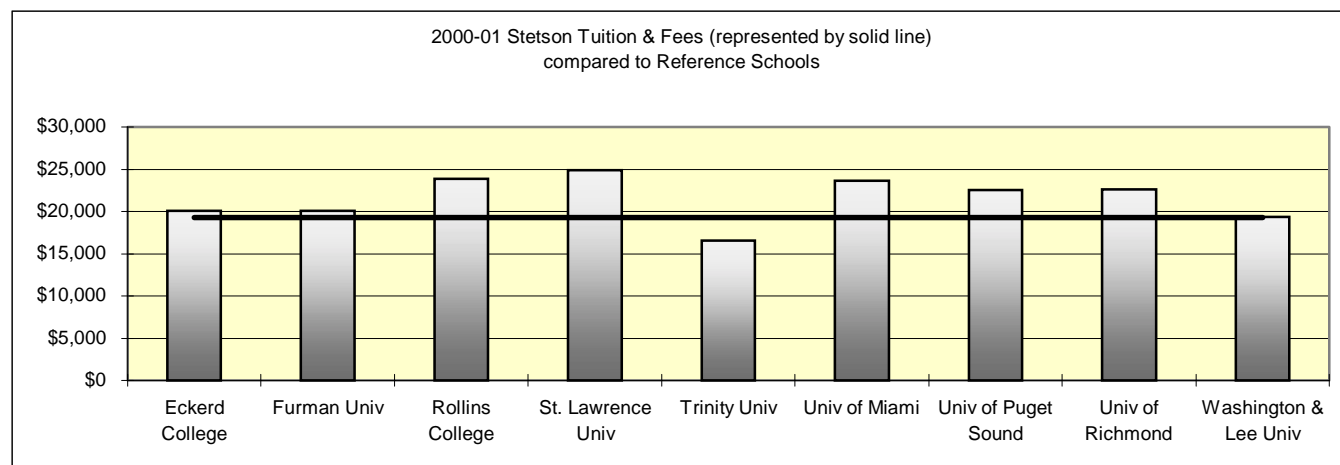
2001 - 02 Reference Schools Comparison - Tuition and Fees

Furman Univ	\$20,076	Trinity Univ	16,554
Rollins College	23,882	Univ of Puget Sound	22,505
St. Lawrence Univ	24,850	Univ of Richmond	22,570
Stetson	19,310	Washington & Lee Univ	19,345

Other

Univ of Miami	23,642	Eckerd College	20,085
---------------	--------	----------------	--------

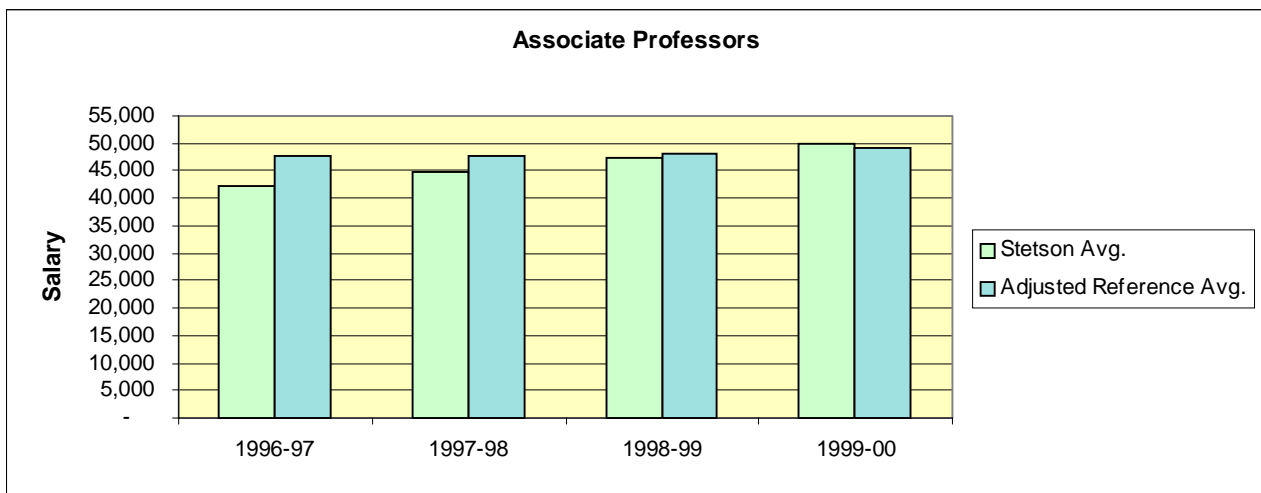
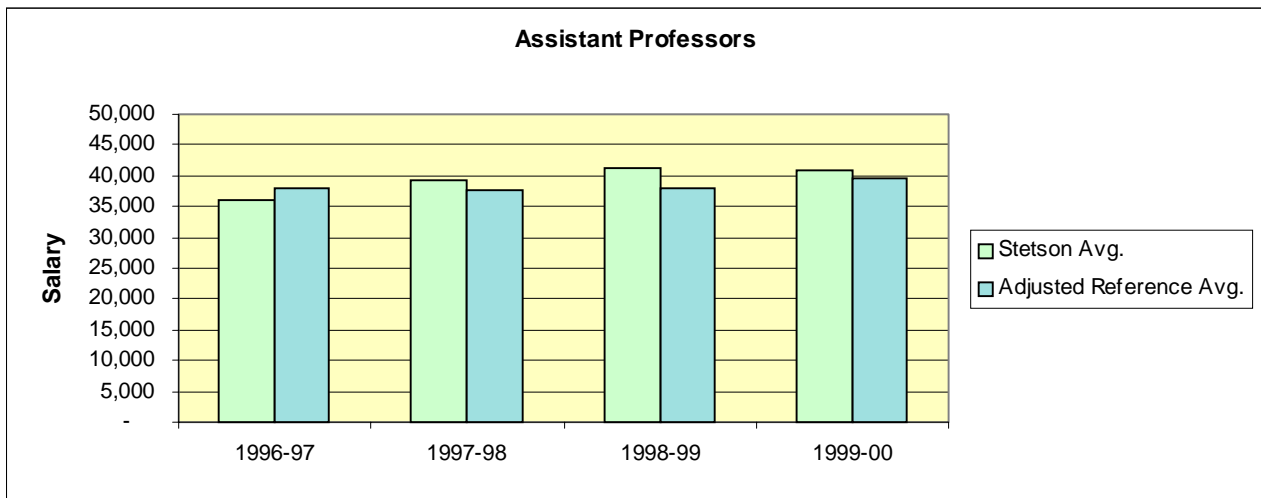
Source: U.S. News & World Report

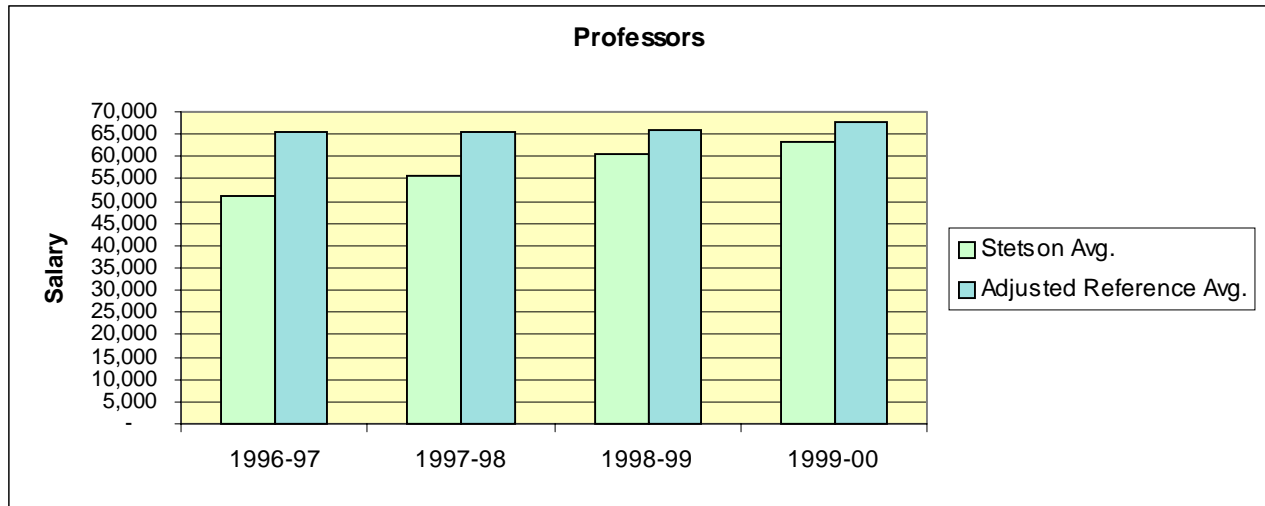


Faculty Compensation

Under the direction of the board of trustees, President Lee appointed a faculty compensation task force during the 1996-97 academic year. Now a standing committee, this group is charged with making recommendations to the President's Staff regarding faculty compensation issues. A major component of this committee's responsibility was establishing reference school salary comparisons and monitoring the progress toward meeting the benchmarks. 1999-00 faculty compensation task force members: Grady Ballenger, Jane Bradford, Paul Dascher, Diane Everett, Karen Kaivola, Leonard Nance, Michael Rickman, Betty Thorne, John Tichenor (ex officio), and Jim Woodward.

The graphs below present the progress made toward matching the average salaries by rank at the reference schools. The reference schools are: Furman University, Rollins College, St. Lawrence University, Trinity University, University of Puget Sound, University of Richmond, and Washington & Lee University. The average salaries at these schools are adjusted for cost of living differences between their locations and the Daytona Beach Metropolitan Statistical Area (MSA). The salaries are also adjusted for state income taxation.

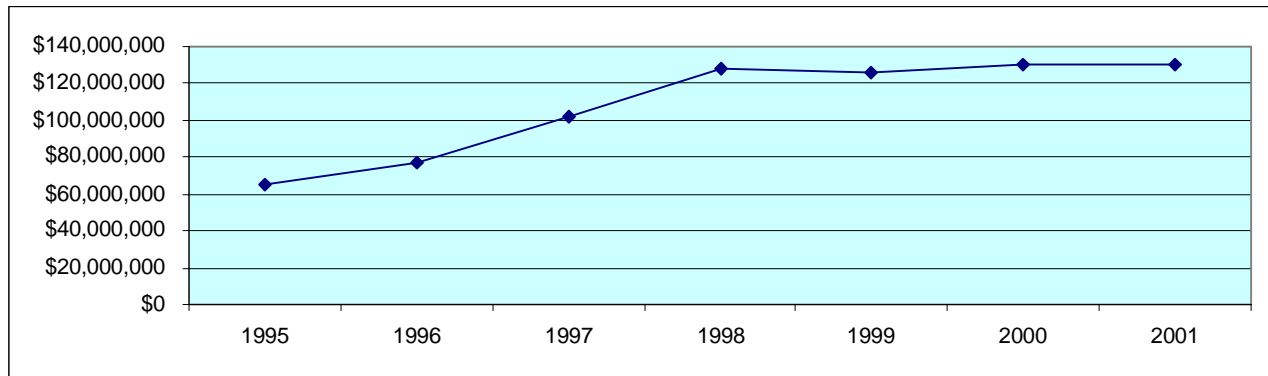




Financial Information

Endowment - Market Value

5/31/95	5/31/96	5/31/97	5/31/98	12/31/99	5/31/00	5/31/01
\$65,364,000	\$76,820,000	\$102,012,000	\$127,858,000	\$125,930,588	\$130,066,800	\$130,407,000

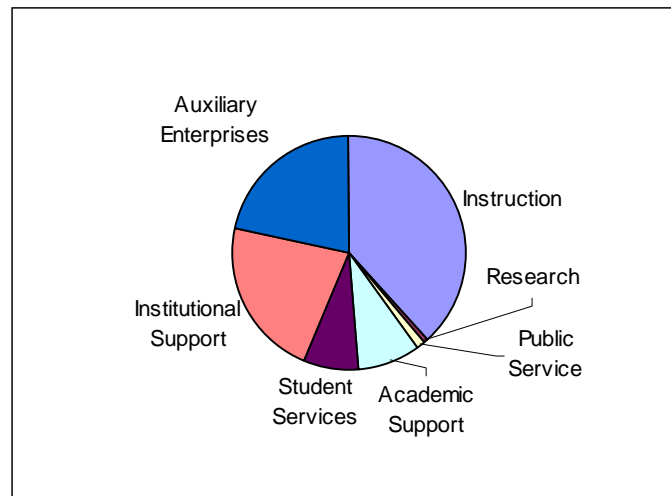


Endowment - Reference Schools

School	Market Value End FY01	National Rank in Endowment Assets
University of Richmond	\$1,122,055,000	34th
Trinity University	\$649,936,000	71st
Washington & Lee University	\$438,392,000	100th
Furman University	\$247,691,000	166th
St. Lawrence University	\$200,091,000	191st
University of Puget Sound	\$188,427,000	195th
Rollins College	\$139,993,000	248th
Stetson	\$130,407,000	265th

Source: 2001 NACUBO Endowment Study

Expenditures – Fiscal Year 2001



Source: IPEDS Finance Survey

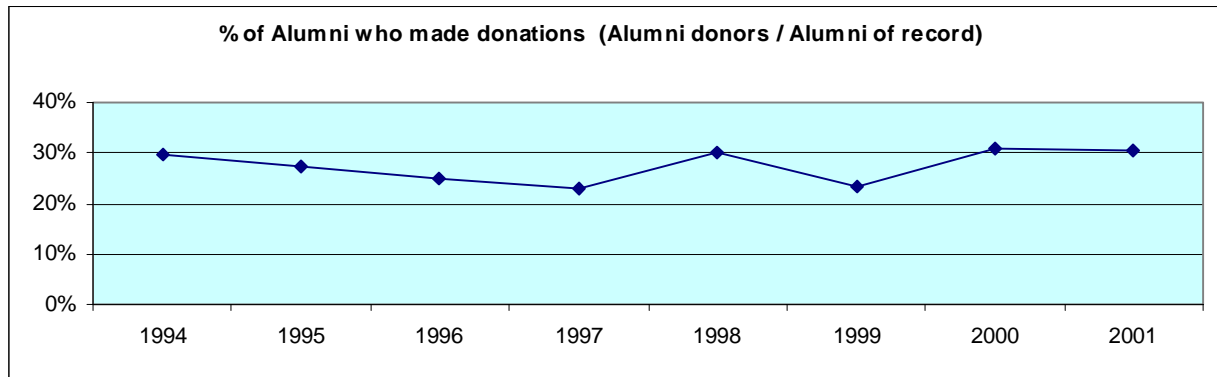
Library holdings

	Books & Bound Journals	Federal Documents	Remote Databases*	Journal Subscriptions		
				Current Paper	Microform	Internet (full-text)**
5/31/93	298,207	220,468	0	1,303	524	0
5/31/94	305,085	225,871	0	1,339	532	0
5/31/95	313,261	229,852	0	1,351	526	0
5/31/96	316,738	234,110	0	1,369	539	0
5/31/97	320,011	236,598	0	1,415	531	0
5/31/98	323,576	238,569	1,315	1,392	517	0
5/31/99	330,109	241,564	1,335	1,389	518	2,430
5/31/00	333,447	245,834	1,320	1,388	514	2,216

* Periodicals and subscriptions accessible through WebCat ** Not held in paper

Alumni Giving Profile

	1995	1996	1997	1998	1999	2000	2001
Alumni of record	18,742	19,312	19,278	18,940	18,240	18,724	14,911
Alumni solicited	11,996	10,872	11,098	14,526	16,040	14,358	10,255
Alumni donors	5,150	4,807	4,402	5,723	4,273	5,759	4,534
Giving percent of record	27.48%	24.89%	22.83%	30.22%	23.43%	30.8%	30.4%



Student Financial Aid

Scholarships/Grants (2001-2002)

	Need-Based	Non-Need-Based
Federal	\$ 1,812,319	0
State	\$511,550	\$ 6,092,039
Institutional*	\$ 7,853,118	\$ 4,266,184
External	0	\$ 509,066
TOTAL	\$10,176,987	\$10,867,289

*excludes athletic aid and tuition waivers

	New Full-time Freshman	Full-time Undergrads
Average need-based gift award	\$ 12,504	\$ 11,186
Average need-based financial aid package	\$ 18,823	\$ 19,003
Students receiving non-need based gift aid	165	580
Average non-need based gift award	\$ 10,160	\$ 9,775

ACADEMIC PROGRAMS

Degrees and Programs Offered (2001-02)

College of Arts and Sciences

American Studies	B.A.		
Aquatic & Marine Biology*	B.S.	Modern Languages	
Art	B.A.	French	B.A.
Biology	B.A., B.S.	German	B.A.
Biochemistry*	B.S.	Spanish	B.A.
Chemistry	B.S.	Philosophy	B.A.
Communication Studies	B.A.	Physics	B.S.
Computer Science	B.S.	Political Science	B.A., B.S.
Computer Information Systems	B.A., B.S.	Psychology	B.A., B.S.
Digital Arts	B.A.	Religious Studies	B.A.
Economics	B.A., B.S.	Russian Studies	B.A.
Elementary Education*	B.A., B.S.	Secondary Education*	B.A., B.S.
English	B.A.	Social Science*	B.A.
Environmental Science	B.A., B.S.	Social Science - Education*	B.A.
Geography	B.A., B.S.	Sociology	B.A., B.S.
History	B.A.	Sport and Exercise Science	
Humanities	B.A.	Athletic Training*	B.S.
International Studies	B.A.	Exercise Science	B.S.
Latin American Studies	B.A.	Rehabilitative Studies*	B.S.
Mathematics	B.A., B.S.	Sports Administration	B.A.
Molecular Biology*	B.S.	Sport Management	B.A.
Music	B.A.	Theatre Arts	B.A.

* Minor NOT available

Minors only

Africana Studies	Anthropology	Health Care Issues	Studio Art
Applied Ethics	Art History	Journalism	Urban Studies
		Russian	Women and Gender Studies

Cooperative Programs

Engineering	Pre-Med	Forestry and Environmental Studies
Medical Technology	Pre-Law	

School of Business Administration

Accounting	B.B.A.	General Business Administration	B.B.A.
Economics*	B.B.A.	International Business*	B.B.A.
Electronic Business Technology	B.B.A.	Management	B.B.A.
Finance	B.B.A.	Marketing	B.B.A.

* Minor NOT available

Minors only

Applied Statistics	Business Law	Family Business
--------------------	--------------	-----------------

School of Music

B.A. Music
B.A. Digital Arts - Music Track

B.M.E. Instrumental/General
B.M.E. Vocal/General

B.M. Performance
Piano/Organ
Voice
Guitar
Orchestral Instrument

B.M. Theory and Composition
B.M. Elective Studies in a Specific Outside Field
Digital Arts
Business
Other

Minors

General Music

Church Music (must be attached to a music degree)

Graduate

Mental Health Counseling
Marriage and Family Therapy
School Counseling & Family
Consultation
Education
Elementary Education
Exceptional Student Education

M.S.	Career Teacher	Ed.S.
M.S.	English	M.A., M.A.T.
M.S.	Educational Leadership	M.Ed., Ed.S.
M.S.		M.B.A./M.Ed.
M.A.		M.B.A./Ed.S.
M.Ed.	Accounting	M.Acc.
M.Ed.	General Business Administration	M.B.A.

Enrollment by Major - Undergraduate (Fall 2001)

Includes Double Majors

College of Arts and Sciences

Major	Frequency	% of A&S		Major	Frequency	% of A&S	
		Majors				Majors	
American Studies	5	0.4%		Health Science	15	1.3%	
Art	36	3.2%		History	20	1.8%	
Biochemistry	29	2.6%		Humanities	8	0.7%	
Biology	113	10.0%		International Studies	13	1.1%	
Biology - Aquatic & Marine	7	0.6%		Latin American Studies	1	0.1%	
Biology - Sec Educ	1	0.1%		Mathematics	9	0.8%	
Biology - Molecular	5	0.4%		Mathematics-Secondary Educ	6	0.5%	
Biomedical Science - Honors	1	0.1%		Music - Liberal Arts	7	0.6%	
Chemistry	17	1.5%		Philosophy	9	0.8%	
Chemistry - Secondary Educ.	2	0.2%		Physics	17	1.5%	
Communication Studies	72	6.4%		Political Science	99	8.7%	
Computer Information Systems	14	1.2%		Psychology	135	11.9%	
Computer Science	34	3.0%		Religious Studies	16	1.4%	
Digital Arts-Art Track	49	4.3%		Russian Studies	2	0.2%	
Digital Arts-Computer Science	11	1.0%		Social Sci - Secondary Educ	8	0.7%	
Digital Arts-Music Track	7	0.6%		Social Science	3	0.3%	
Economics	11	1.0%		Sociology	35	3.1%	
Education - General	10	0.9%		SES - Athletic Training	14	1.2%	
Elementary Education	75	6.6%		SES - Exercise Science	27	2.4%	
English	68	6.0%		SES - Movement Therapy	1	0.1%	
English - Secondary Education	4	0.4%		SES - Rehabilitative Studies	9	0.8%	
Environmental Science	19	1.7%		SES - Sport Administration	33	2.9%	
French	8	0.7%		SES - Sport Management	7	0.6%	
Geography	4	0.4%		Spanish	21	1.9%	
German	3	0.3%		Theatre Arts	13	1.1%	
Total A&S Majors				1133	100.0%		

School of Business

Major	Frequency	% of Bus.	
		Majors	
Accounting	60	8.5%	
E-Business Technology	13	1.8%	
Computer Info Sys - BBA	30	4.3%	
Finance	99	14.1%	
General Business Admin.	232	33.0%	
International Business	86	12.2%	
Management	73	10.4%	
Marketing	110	15.6%	
Total Business Majors	703	100.0%	
Discovery (Undeclared)	220		

School of Music

Major	Frequency	% of Mus.	
		Majors	
Bach of Music w/Bus Adm	14	6.5%	
Bach of Music w/Dig Arts	8	3.7%	
Bach of Music w/outside Field	13	6.1%	
Music Ed, Instrumental/Gen	53	24.8%	
Music Ed, Vocal/General	18	8.4%	
Performance - Guitar	10	4.7%	
Performance - Orchestral	21	9.8%	
Performance - Piano/Organ	11	5.1%	
Performance - Voice	54	25.2%	
Theory & Composition	11	5.1%	
Undeclared (Music)	1	0.5%	
Total Music Majors		214	100.0%

Enrollment by Minor - Undergraduate (Fall 2001)

Includes Double Minors

College of Arts and Sciences					
	#	%		#	%
Africana Studies	2	0.4%	History	19	3.5%
American Studies	1	0.2%	Humanities	4	0.7%
Anthropology	9	1.7%	International Studies	3	0.6%
Applied Ethics	2	0.4%	Journalism	29	5.4%
Art	21	3.9%	Latin American Studies	4	0.7%
Art History	6	1.1%	Leadership	2	0.4%
Biology	20	3.7%	Mathematics	19	3.5%
Chemistry	8	1.5%	Philosophy	8	1.5%
Communication Studies	25	4.7%	Political Science	19	3.5%
Computer Science	9	1.7%	Psychology	66	12.3%
Digital Arts	18	3.4%	Religious Studies	22	4.1%
Economics	4	0.7%	Russian	4	0.7%
Educ-Varying Exceptionalities	5	0.9%	Russian Studies	5	0.9%
English	16	3.0%	SES: Sports Management	2	0.4%
Environmental Studies	3	0.6%	SES: Sports Admin	5	0.9%
French	30	5.6%	Sociology	23	4.3%
Geography	5	0.9%	Spanish	78	14.6%
German	7	1.3%	Theatre Art	12	2.2%
Health Care Issues	10	1.9%	Women & Gender Studies	8	1.5%
Health Science	1	0.2%		2	0.4%
			Total A & S Minors	536	100.0%
School of Business			School of Music		
Accounting	3	0.9%	Music	56	98.2%
Applied Statistics	14	4.0%	Church Music	1	1.8%
Business Law	53	15.1%	Total Music Minors	57	100.0%
Family Business	13	3.7%			
Finance	15	4.3%			
General Business	32	9.1%			
E-Business Technology	36	10.2%			
Information Technology	128	36.4%			
Management	19	5.4%			
Marketing	39	11.1%			
Total Business Minors	352	100.0%			

Enrollment by Major - Graduate (Fall 2001)

Major	#	%	Major	#	%
General Business Administration	141	42.6%	Education Administration	1	.3%
Accounting	8	2.4%	Counseling – School Guid & Family	46	13.9%
Elementary Education	3	.9%	Counseling – Marriage & Family	36	10.9%
Education	5	1.5%	Mental Health Counseling	12	3.6%
Prof Teaching	3	.9%	English	8	2.4%
Exceptional Student Education	14	4.2%	None Declared	33	10.0%
Career Teacher	3	.9%	Law	3	.9%
Educational Leadership	15	4.5%	TOTAL	331	

Enrollment by Major - Undergraduate (Historical)*

Arts & Sciences	1993	1994	1995	1996	1997	1998	1999	2000	2001
American Studies	9	5	6	10	11	8	4	4	4
Art	22	12	11	13	17	20	24	33	33
Aquatic & Marine Biology									6
Biochemistry					12	29	28	30	27
Biology	153	120	120	112	114	110	111	107	112
Chemistry	31	34	29	30	19	17	15	14	17
Communication Studies	31	38	35	40	51	46	53	72	70
Computer Information				2	12	10	4	11	39
Computer Science	26	23	20	32	35	43	53	45	33
Digital Arts				8	26	48	67	75	59
Economics	4	4	7	4	5	6	3	3	1
Education - Elementary	104	110	100	100	100	90	72	76	75
Education - General									10
Education - Secondary	25	24	17	16	19	16	17	16	20
English	110	123	82	70	62	62	61	69	66
Environmental Science				3	18	29	22	19	19
Foreign Language - French	15	14	11	9	5	5	2	5	6
Foreign Language - German	4	7	4	3			3	3	1
Foreign Language - Spanish	11	12	16	9	5	9	9	11	11
Foreign Language Combo	8	2	1						
Geography	6	11	11	6	2	1	1	2	2
History	50	40	36	35	39	34	26	26	18
Honors	1	1		4	1				1
Humanities	8	6	5	2	3	6	7	4	8
Integ Health - Health Science									15
International Studies			1			1	5	5	13
Journalism self-defined						1			
Latin American Studies			2	2	1				
Mathematics	23	17	26	25	19	17	17	12	8
Med Tech	3	3	2	2	2	1		1	
Molecular Biology								3	5
Philosophy	5	3	7	1	2	9	10	10	8
Physical Education	11						1		
Physics	20	16	23	17	15	13	13	20	17
Political Science	107	114	98	89	87	78	71	98	95
Psychology	136	149	140	127	121	102	98	126	127
Religious Studies	2	5	7	10	13	15	10	11	13
Russian Studies	11	8	8	5	5	3	2	2	1
SES-Athletic Training	1	6	7	4	8	20	24	22	14
SES-Exercise Science	22	56	51	37	46	55	51	45	27
SES-Movement Therapy			1	13	12	21	23	13	1
SES - Rehabilitative Studies								2	9
SES-Sport Admin	22	24	27	29	26	32	39	44	40
SES-Sport Communications	1	2	6	9	11	7	4	1	
Social Science	7	4	3	3	3	4	2	4	3
Sociology	28	31	33	25	21	30	42	42	33
Theatre Arts	5	6	10	10	8	9	8	7	10
Discovery (Undeclared)	255	221	231	227	229	242	224	192	212
Total	1277	1251	1194	1143	1185	1249	1226	1285	1289

Enrollment by Major - Undergraduate (Historical), continued*

Business	1993	1994	1995	1996	1997	1998	1999	2000	2001
Accounting	159	148	127	88	85	80	86	80	60
Business Economics	4	7	7	7	4	4	6	5	2
Computer Info Systems				1	8	15	34	30	
Electronic Business Tech									12
Finance	86	77	76	77	80	61	73	83	93
General Business Admin	219	223	202	200	200	212	220	238	232
International Business					18	42	56	75	81
Management	62	70	83	82	68	63	77	70	73
Marketing	67	65	74	83	76	65	89	102	107
Undeclared (Business)									2
Total	597	590	569	538	539	542	641	683	662

Music	1993	1994	1995	1996	1997	1998	1999	2000	2001
Bach of Music w/Bus Adm					10	17	10	16	14
Bach of Music w/outside Field				4	7	11	15	5	12
Bachelor of Music w/Dig Arts					7	7	8	5	8
Church Music	3	1	1						
Music Education	84	80	96	75	87	86	81	74	71
Music Lib. Arts	5	7	9	9	6	2	3	3	6
Musical Theater	4	4	3	2			1		
Performance:									
Guitar	12	11	12	10	13	11	8	10	10
Orchestral Instrument	19	23	23	13	20	19	22	14	20
Piano	16	13	7	6	2	1			
Piano/Organ				1	6	8	4	6	11
Voice	22	16	24	24	19	24	29	38	54
Theory & Composition	5	2	9	5	6	5	6	15	11
Undeclared (Music)	1	1	3	21	1	5	8	1	6
Total	171	158	187	170	184	196	195	187	223

*These statistics do not include double majors

Degrees Awarded by Major - Undergraduate (Historical)

Program	7/1/95 to 6/30/96	7/1/96 to 6/30/97	7/1/97 to 6/30/98	7/1/98 to 6/30/99	7/1/99 to 6/30/00	7/1/00 to 6/30/01
American Studies		4	6	2	1	1
Art	3	4	3	4	2	5
Biology	23	18	27	25	20	23
Bio-Chemistry				4	2	4
Chemistry	7	3	7	3	6	
Communications	11	20	16	14	10	19
Communications, Other	1		4	2	1	2
Computer & Info Science	3	5				
Computer Science			3	12	9	7
Computer Science, Other (DA)						16
Economics	1	2	1	4	1	1
English	28	23	19	15	11	21
Environmental Science / Studies		1	1	5	5	5
Foreign Language	1					
Foreign Language: French	7	3	2	3		
Foreign Language: German		2				1
Foreign Language: Spanish	7	6	5	1	1	3
Geography	8	6	1	2		1
History	9	13	10	12	10	6
Humanities	4	2	2	1	5	3
International Studies/Sciences			1			1
Latin American Studies			1			
Mathematics	2	5	8	3	3	3
Medical Technology					1	
Philosophy	2	3		1	1	1
Physics	5	2	3	3	1	5
Political Science	27	16	23	22	10	10
Psychology	44	34	35	28	24	30
Religious Studies	4	3	8	3	5	3
Russian Studies	2	2	1	1		1
SES: Athletic Trng & Sports Med	1		2		4	3
SES: Ex Science & Mvmt Therapy			14	15	20	20
SES: Sport & Fitness Admin		6	9	6	8	12
Social Science Teacher Educ	2	1				
Social Sciences	1	1	4	2	2	3
Sociology	19	12	7	9	11	21
Teacher Educ - Art						
Teacher Educ - Elem	26	30	23	34	20	16
Teacher Educ - English	1	2	4	3	1	
Teacher Educ - Math						
Teaching & Coaching - Phys Ed	28	11				
Theatre Arts		3	1	4	1	2
Arts & Sciences Total	277	243	251	243	196	249

Business						
Business Administration	39	39	35	38	37	44
Accounting	31	28	19	22	15	20
Business Economics		2			2	1
Business, Other (CIS)				3	5	9
Finance	30	23	31	29	20	24
International Business				3	7	8
Management	31	25	26	16	23	16
Marketing	20	35	32	19	32	40
Business Total	151	152	143	130	141	162

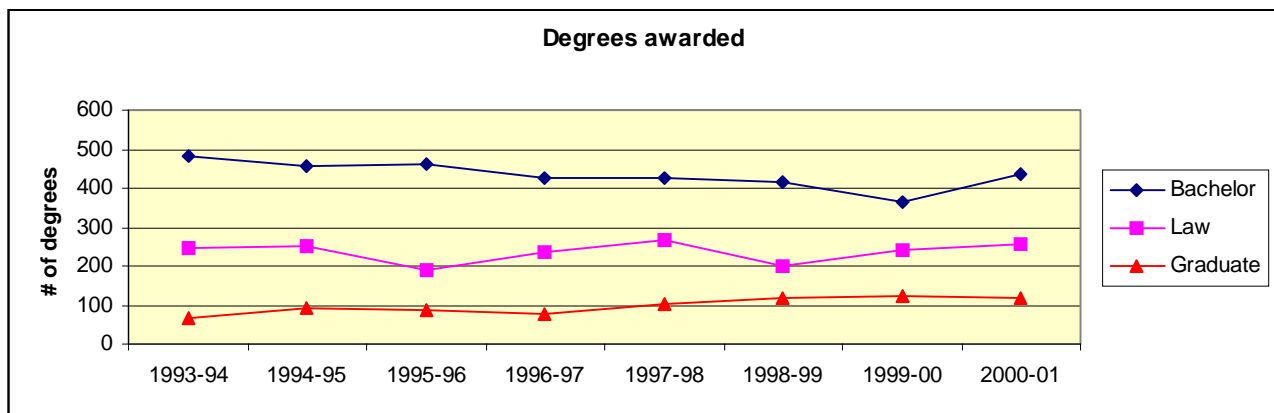
Music						
Music Perf - Piano & Organ	2	6	1	1		1
Music Perf - Voice	5	2	5	5	2	7
Music - Other	6	11	8	15	6	1
Music, General Performance	4		1	2	6	2
Music Theory & Composition	2		2	1		2
Teacher Educ - Music	17	11	13	19	11	12
Music Total	36	30	30	43	25	25

UNDERGRADUATE TOTAL	464	425	424	416	362	436
----------------------------	------------	------------	------------	------------	------------	------------

Source: IPEDS Completion Reports (classified by CIP codes)

Degrees Awarded - by Degree Type (Historical)

	1993-94	1994-95	1995-96	1996-97	1997-98	1998-99	1999-00	2000-01
Arts &								
Bachelor	276	263	277	243	251	243	196	249
Graduate	35	37	47	40	39	23	48	40
Business								
Bachelor	168	157	151	152	143	130	141	162
Graduate	33	40	46	36	63	95	74	79
Music	37	35	36	30	30	43	25	25
Law	246	253	191	235	265	202	243	257



College of Law

Founded in 1900 as Florida's first law school, the College of Law was located on Stetson University's main campus in DeLand for more than half a century. In 1954, the College relocated to a beautiful 21-acre campus in the residential beachfront community of Gulfport, adjacent to St. Petersburg. The campus, with its Mediterranean revival architecture, is a Tampa Bay landmark. The College of Law is accredited by the American Bar Association and has been a member of the Association of American Law Schools since 1931.

There are many distinctive features of a Stetson University College of Law education, among the most significant being its student-centered philosophy. With approximately 700 students, the law school is small enough to provide a close community environment in which students, faculty and staff work together toward one common goal: preparing students to be the best lawyers possible.

Stetson has long been known and honored for its strong tradition of teaching advocacy skills, but its faculty members are multi-dimensional in their talents. They are dedicated and effective classroom teachers; they work closely with students outside of the classroom; they are active in bar associations and other professional organizations; and they are productive scholars.

One of the College's greatest assets is the Stetson Lawyers Association, with a membership of more than 6,000 alumni throughout the United States and the world. Stetson graduates serve as outstanding lawyers, judges and leaders in business, government and education.

Stetson addresses important contemporary legal developments through its Centers for Excellence in advocacy, dispute resolution, elder law, health law, and international law and business. The Centers sponsor conferences, workshops, continuing legal education programs, research projects and scholarship within their subject areas.

Stetson provides a balanced legal education consisting of an in-depth core curriculum, complemented by a broad range of elective courses. Students can specialize their studies by enrolling in the joint J.D./M.B.A. program or one of the Certificates of Concentration programs in advocacy, elder law, health law or international law.

The LL.M. program in international law and business has prepared attorneys from the United States and 23 other countries to enter the global legal marketplace with thorough preparation for commercial and business-related practice or work in related professions. J.D. students can expand their international experience through summer abroad programs in Tallinn, Estonia and Granada, Spain.

The College of Law pursues a simple but important mission, to prepare students to competently, professionally, ethically and compassionately engage in the practice of law, serve in related professions, and pursue public service. For more than a century, the College of Law has fulfilled that mission and has been a powerful force in shaping the legal profession.

Law School Tuition (10 credit hours or more)

1995-96	1996-97	1997-98	1998-99	1999-00	2000-01	2001-02	2002-03
\$18,175	\$18,175	\$18,975	\$19,750	\$20,350	\$21,165	\$21,905	\$22,785

Law School Tuition for Summer Session (5 credit hours or more)

1995	1996	1997	1998	1999	2000	2001	2002
\$4,550	\$4,550	\$4,750	\$4,950	\$5,100	\$5,305	\$5,475	\$5,695

Law School Key Facts

- Ranked Number One in trial advocacy by *U.S. News & World Report*
- Outstanding intercollegiate competition opportunities
- Only law school in the nation to win all five national-level law school trial competitions in one academic year
- Centers for Excellence in Advocacy, Dispute Resolution, Elder Law, Health Law, and International Law & Business
- Accomplished faculty who are experts in their fields
- Practice-based clinics and internships
- The first law school in Florida to establish a clinical program
- Concentration programs in Advocacy, Elder Law, Health Law and International Law
- Honors program for top students
- Part-time J.D. program beginning Fall 2002
- Joint J.D./M.B.A. program
- LL.M. in International Law and Business
- Small classes and individual attention to student needs
- A solid, skill-based curriculum
- Excellent job placement services
- Summer programs in Estonia and Spain
- The first law school in Florida and one of the first law schools in the nation to require pro bono service by students and faculty
- Vibrant student life with a diversity of student organizations, interscholastic activities and competitions
- State-of-the-art Law Library and Legal Information Center
- Superb facilities, with advanced computer and Internet technology
- International, national and regional continuing legal education (CLE) programs
- Beautiful Tampa Bay location

For more information on the College of Law, visit www.law.stetson.edu.

Stetson Center at Celebration

Background to the University's Commitment to a Presence in Celebration

Since 1992, Stetson has actively involved itself in the evolution of the new town of Celebration, Florida, a community built upon American tradition. Celebration's hi-tech comprehensive K-12 school represents a potential model for educational reform through its inclusion of multiple "best practices" in a uniquely designed architectural configuration for multi-graded neighborhoods. Celebration reflects a modern, planned community built upon compatible values, esthetics and lifelong learning. It offers opportunities for varied dimensions of learning and a living laboratory for innovation and research. It, like the University itself, communicates optimism and hope through an open environment which encourages inquiry and involvement.

The Stetson University Center proposed for Celebration will make a significant statement about and provide a tangible example of the University's strong, continuing commitment to quality, multifaceted, lifelong community focused learning. It will firmly establish the University in the heart of Florida in the most important economic and population growth area in the Southeast, after Atlanta. It will offer student and revenue growth potential in areas of the University's proven strength. It will signal a progressive vision from the University for its progress in the new millennium.

Objectives and Vision

We want to benefit from the national spotlight that shines brightly on Celebration. The core vision of the University is to establish a nationally recognized center for educational development and community growth. The Stetson University Center will become the preferred provider of life long learning in Celebration and an important center for teaching training and educational reform. A significant objective is to provide a new venue for selective growth of university courses and degree programs as well as for continuing education.

The University's presence in Celebration is expected to promote better awareness of the University by capitalizing on the image of Celebration, by extending its national public exposure of educational initiatives and by enhancing access to corporate and foundation sponsorships.

Specific local objectives include the addition of value to the quality of life in Celebration itself and to improving teaching and learning at Celebration school. In Celebration, the University will be able to model nationally and internationally best practices in education and re-invent approaches to learning and wellness by bridging higher education with individual needs and interests.

Building Project Team/Planning Process

The University, the Celebration Company, the Architects and the Contractor are interacting throughout the design and building process to assure a flexible, practical purpose-built building conducive to the vision and objectives. The V.P. for Facilities Management is responsible for liaison with architects, contractors and others directly involved in construction. The University's Associate V.P. for Celebration is charged with coordinating relationships with The Celebration Company and with the University Deans and faculty involved in the development of Celebration activities. A Design Review Team will be used to include faculty representing the major program components to be contained in the University Center. This team will meet at regular intervals after the strategic design is ready under the chairmanship of the Celebration A.V.P. to review and comment on plans and progress. Such comments and suggestions will be shared as appropriate by the V.P. for Facilities Management with the architects and contractors. The University's Master Campus Planner will be involved directly with the V.P. and the A.V.P. and others as long as

needed and as is appropriate to the success of the building project. The targeted completion date for the building program is May 2001.

Celebration Program Components

1. K-12 Education Improvement and Reform

Celebration School/Renaissance Initiatives

1550 Osceola Educator Programs

National Educator Programs on Best Practices in Education

Technology Enhancement and Infusion

Funding Sources

Stetson/Renaissance Funds

Tuition and Tuition Support Sponsors

Foundations, Corporations, Private Partners, State and Federal Grants

2. Degree Programs

Undergraduate/Degree Completion Programs

Graduate Programs

Business (Executive MBA)

Education

Counseling

Health (Florida Hospital)

Environmental Studies (Walker Ranch)

Funding Sources

Tuition

Tuition Support Sponsors

3. Community School of the Arts

Courses

Training

Community Performance

Funding Sources

Tuition/Fees

Private/Public Grants

4. Others

Professional Development School Initiatives

Special Projects and Workshops

Community Educational Activities

Continuing Legal education

Technology Certification Courses

STUDENT INFORMATION

Admissions

High School Class Rank - New Freshman

	Fall 1998	Fall 1999	Fall 2000	Fall 2001
Top 10% of high school graduating class	33.1%	31.7%	29.9%	34.1%
Top 20% of high school graduating class	57.1%	57.2%	50.6%	56.4%
Top 25% of high school graduating class	68.0%	65.1%	59.4%	62.7%
Top 50% of high school graduating class	91.6%	92.5%	89.1%	89.7%

1998 - 83% of new freshmen submitted class rank

1999 - 85% of new freshmen submitted class rank

2000 - 81% of new freshmen submitted class rank

2001 - 77% of new freshmen submitted class rank

SAT / ACT Scores

Fall 2001 New Freshmen

	75th Percentile	25th Percentile	Average
SAT - Math	620	500	559
SAT - Verbal	610	510	562
SAT - Total	1210	1020	1120

ACT Math	26	19	24
ACT English	27	20	24
ACT Composite	26	21	24

High School GPA	4.00	3.20	3.53
-----------------	------	------	------

93% of new freshman submitted SAT scores (n = 493)

51% of new freshman submitted ACT scores (n = 269)

94% of new freshman submitted High School GPA (n = 501)

Range of SAT / ACT Scores

Fall 2001 New Freshmen

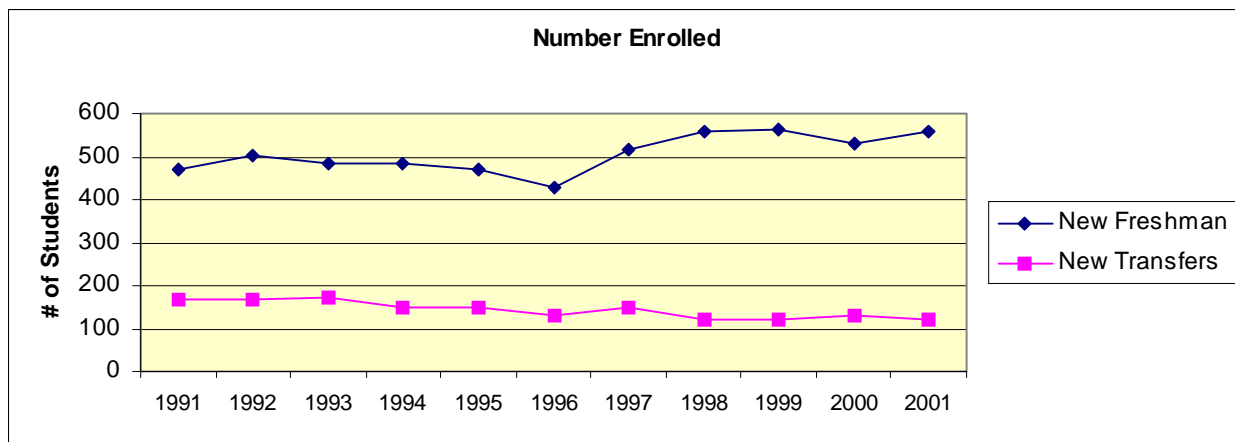
SAT	Verbal	Math
700 - 800	7.1%	4.5%
600 - 699	24.3%	29.0%
500 - 599	48.3%	42.8%
400 - 499	19.9%	22.3%
300 - 399	.4%	1.4%

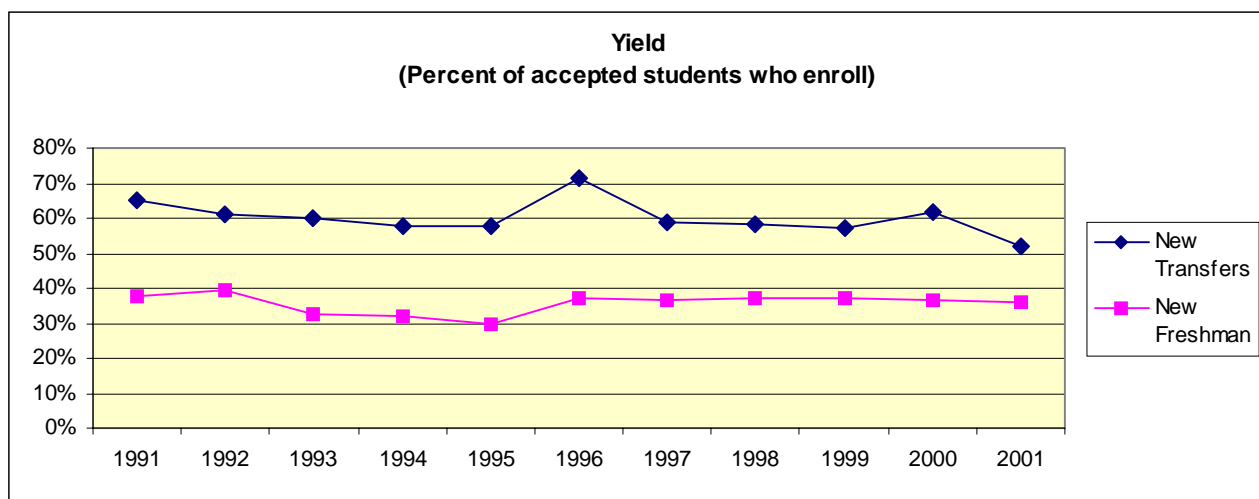
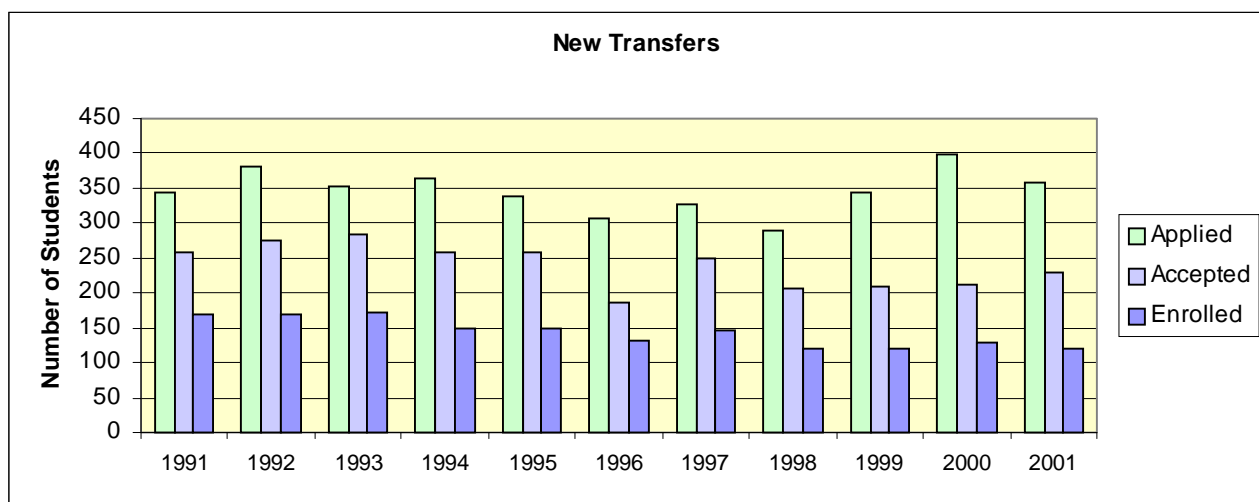
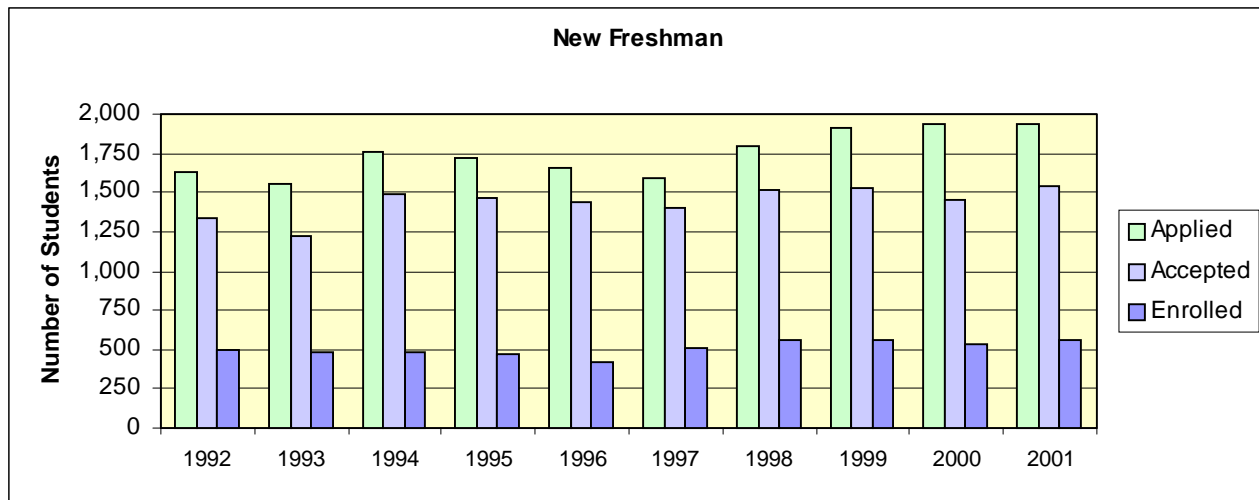
ACT	Composite	English	Math
30 - 36	8.4%	11.7%	6.9%
24 - 29	43.9%	40.5%	44.5%
18 - 23	44.3%	41.3%	41.3%
12 - 17	3.4%	6.5%	7.3%
6 - 11	--	--	--

First-time Freshmen & Transfers - Entering Class Profile

Freshman	1993	1994	1995	1996	1997	1998	1999	2000	2001
Inquired*	19,390	23,611	26,688	24,174	25,157	26,535	25,866	30,980	24,542
Applied	1,557	1,760	1,722	1,660	1,592	1,797	1,913	1,941	1,942
Accepted	1,227	1,491	1,463	1,435	1,396	1,521	1,523	1,456	1,545
Enrolled									
Men	192	200	214	193	219	237	228	252	244
Women	293	285	258	233	296	320	335	277	313
TOTAL	485	485	472	426	515	557	563	529	559
Yield rate for accepted students	39.5%	32.5%	32.3%	29.7%	36.9%	36.6%	37.0%	36.3%	36.2%
Transfers									
Inquired	2,768	2,107	2,026	1,919	1,739	1,782	1,696	1,771	1,815
Applied	353	364	339	306	327	290	344	397	359
Accepted	285	259	259	185	249	205	210	211	228
Enrolled									
Men	78	57	56	69	55	52	48	51	47
Women	93	93	94	63	92	68	72	79	72
TOTAL	171	150	150	132	147	120	120	130	119
	60%	57.9%	57.9%	71.4%	59%	58.5%	57.1%	61.6%	52.2%
Special	10	12	9	4	6	10	12	14	20
TOTAL	666	647	631	562	668	687	695	673	698

* "Inquired" includes mailing lists purchased from College Board and other sources.

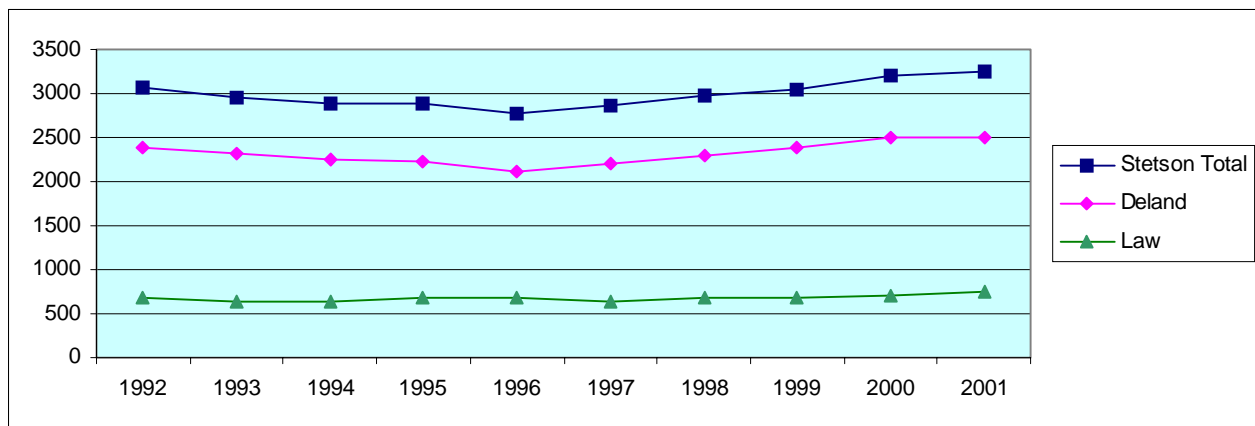




Enrollment

Headcount, Fall Semester (Historical)

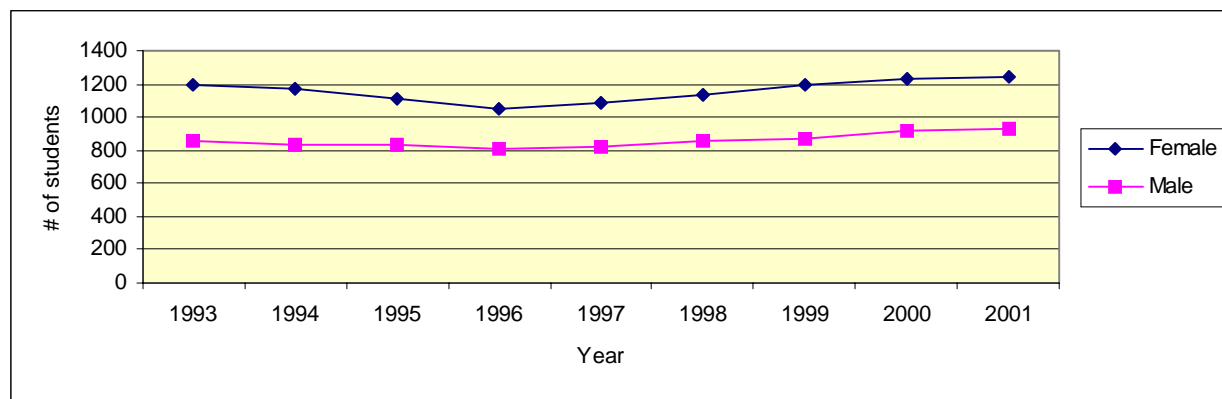
	<u>1993</u>	<u>1994</u>	<u>1995</u>	<u>1996</u>	<u>1997</u>	<u>1998</u>	<u>1999</u>	<u>2000</u>	<u>2001</u>
Full-time									
Undergraduates	1964	1917	1891	1784	1840	1913	1965	2064	2063
Graduates	42	56	47	45	60	57	48	63	61
Post-Bacc	<u>11</u>	<u>22</u>	<u>20</u>	<u>21</u>	<u>8</u>	<u>9</u>	<u>13</u>	<u>6</u>	<u>6</u>
DeLand	2017	1995	1958	1850	1908	1979	2026	2133	2130
College of Law	<u>645</u>	<u>628</u>	<u>676</u>	<u>668</u>	<u>629</u>	<u>668</u>	<u>658</u>	<u>680</u>	<u>727</u>
University (Full-time)	2662	2623	2634	2518	2537	2647	2684	2813	2857
Part-time									
Undergraduates	81	82	59	67	68	74	97	91	111
Graduates	129	115	117	123	177	167	185	219	227
Post-Bacc	<u>81</u>	<u>56</u>	<u>83</u>	<u>68</u>	<u>59</u>	<u>68</u>	<u>72</u>	<u>48</u>	<u>37</u>
DeLand	291	253	259	258	304	309	354	358	375
College of Law	<u>2</u>	<u>7</u>	<u>3</u>	<u>8</u>	<u>16</u>	<u>11</u>	<u>15</u>	<u>28</u>	<u>23</u>
University (Part-time)	293	260	262	266	320	320	369	386	398
Total									
Undergraduates	2045	1999	1950	1851	1908	1987	2062	2155	2174
Graduates	171	171	164	168	237	224	233	282	288
Post-Bacc	<u>92</u>	<u>78</u>	<u>103</u>	<u>89</u>	<u>67</u>	<u>77</u>	<u>85</u>	<u>54</u>	<u>43</u>
DeLand	2308	2248	2217	2108	2212	2288	2380	2491	2505
College of Law	<u>647</u>	<u>635</u>	<u>679</u>	<u>676</u>	<u>645</u>	<u>679</u>	<u>673</u>	<u>708</u>	<u>750</u>
TOTAL University	2955	2883	2896	2784	2857	2967	3053	3199	3255



Enrollment by Gender (Historical)

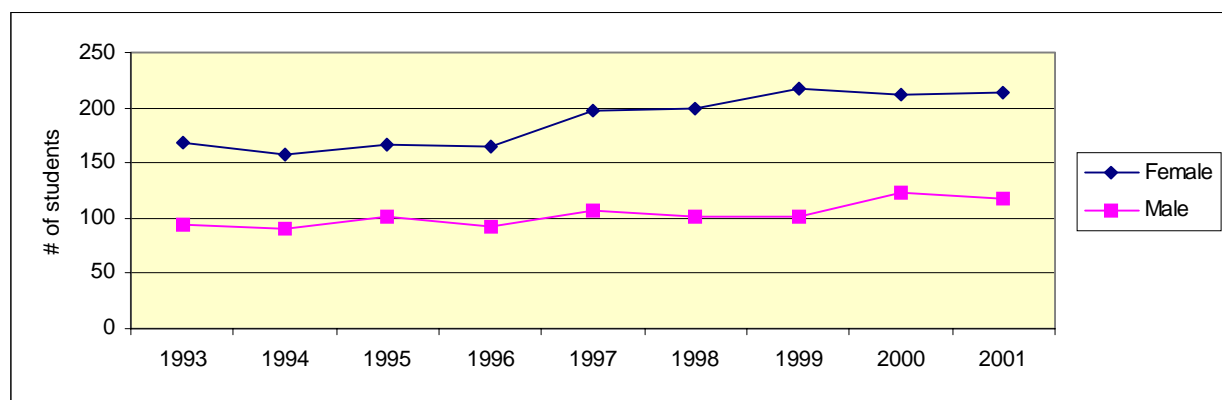
Undergraduate Students

	1993	1994	1995	1996	1997	1998	1999	2000	2001
Male	855	830	838	804	824	852	864	921	1243
Female	1190	1169	1112	1047	1084	1135	1198	1234	931
Total	2045	1999	1950	1851	1908	1987	2062	2155	2174



Graduate Students (excluding College of Law)

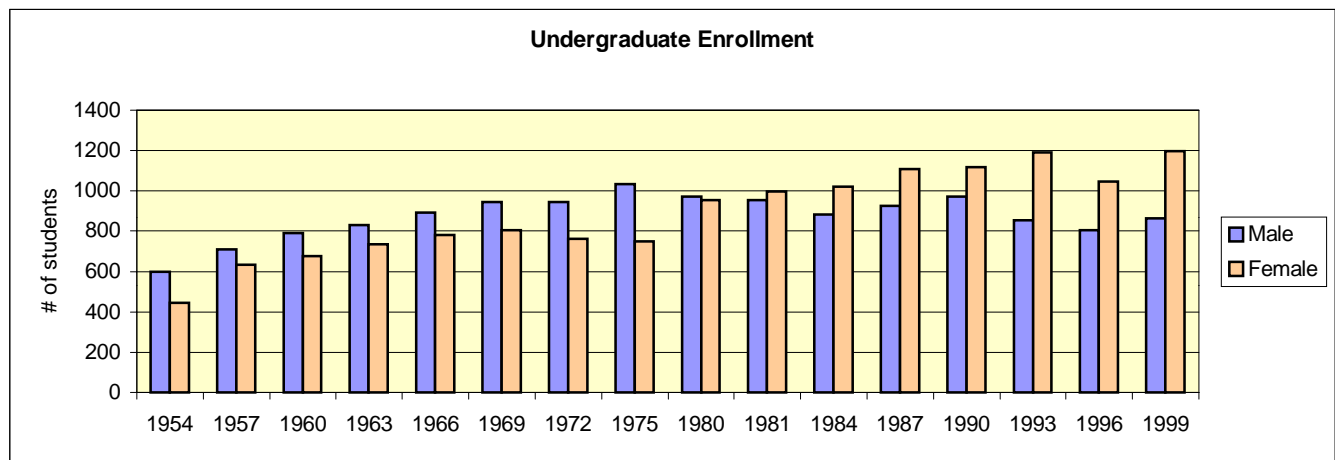
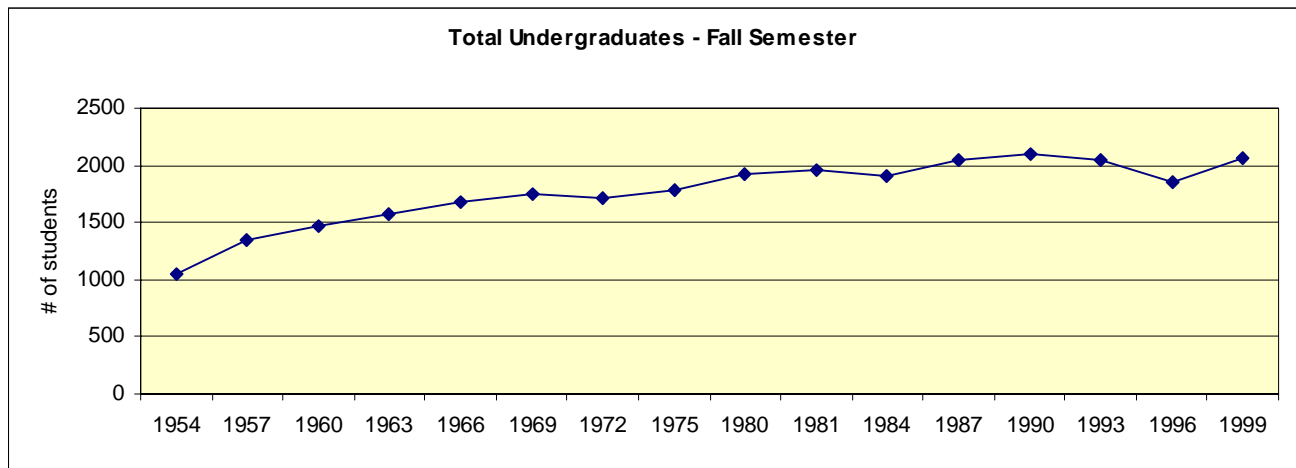
	1993	1994	1995	1996	1997	1998	1999	2000	2001
Male	94	91	101	93	106	102	101	124	213
Female	169	158	166	164	198	199	217	212	118
Total	263	249	267	257	304	301	318	336	331



Headcount, Fall Semester (Historical - 1954 to 1999)

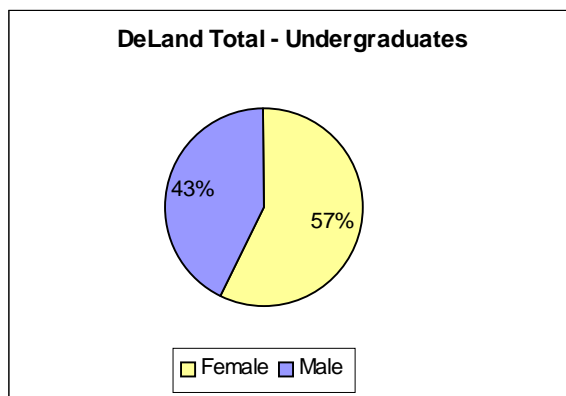
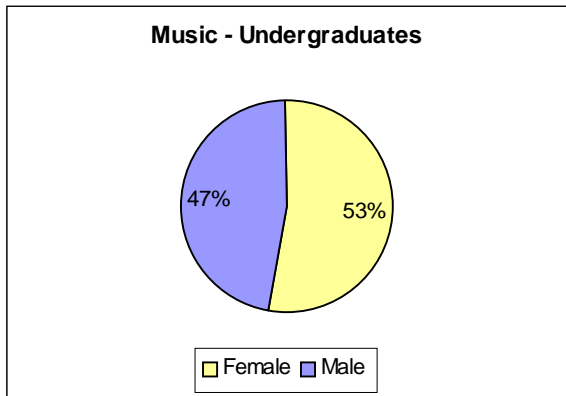
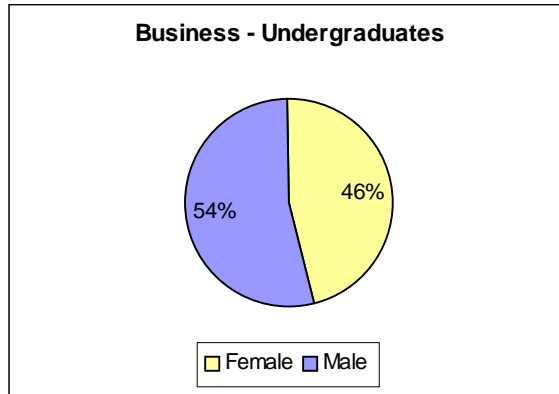
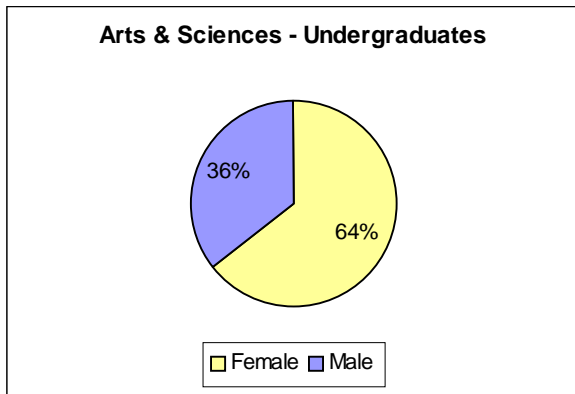
	Full-time			Part-time		
	Male	Female	TOTAL	Male	Female	TOTAL
Fall 1954	584	427	1011	14	17	31
Fall 1957	697	623	1320	14	11	25
Fall 1960	777	664	1441	15	12	27
Fall 1963	800	719	1519	31	18	49
Fall 1966	869	748	1617	24	34	58
Fall 1969	906	760	1666	38	46	84
Fall 1972	899	718	1617	47	45	92
Fall 1975	964	710	1674	71	38	109
Fall 1980	954	932	1886	18	23	41
Fall 1981	932	975	1907	22	22	44
Fall 1984	857	996	1853	25	25	50
Fall 1987	894	1081	1975	33	29	62
Fall 1990	943	1079	2022	30	39	69
Fall 1993	821	1143	1964	34	47	81
Fall 1996	783	1001	1784	21	46	67
Fall 1999	827	1138	1965	37	60	97

Source: HEGIS and IPEDS Enrollment Reports



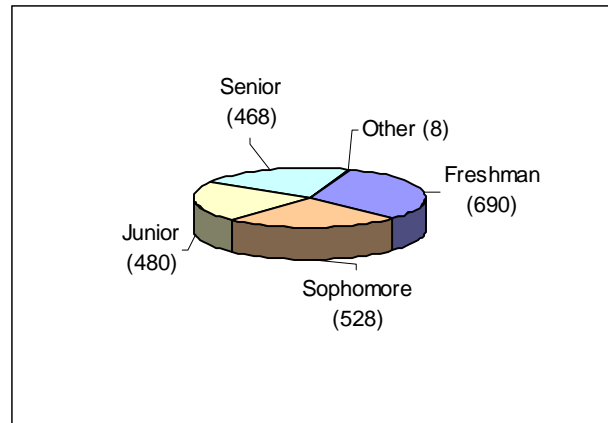
College or School & Gender (Fall 2001)

	Female	Male	Total
Arts & Sciences			
Undergraduate	814	454	1268
Graduate	139	29	168
Total	953	483	1436
Business			
Undergraduate	314	373	687
Graduate	74	89	163
Total	388	462	850
Music			
Undergraduate only	115	104	219
Law	407	343	750
Stetson Total	1863	1392	3255



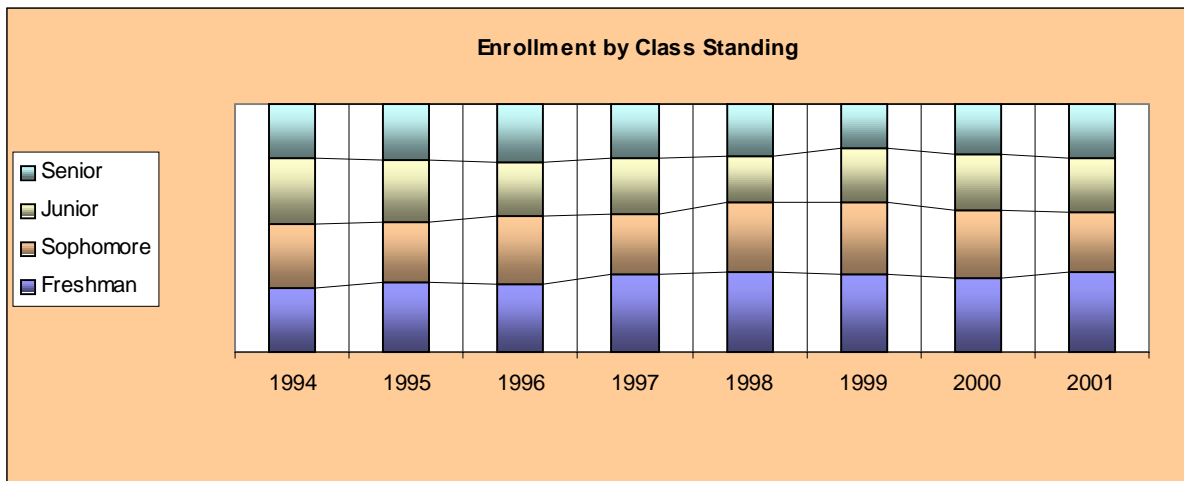
Class Standing - Undergraduate (Fall 2001)

(Headcount)	Female	Male	TOTAL
Freshman	383	307	690
Sophomore	291	237	528
Junior	283	197	480
Senior	280	188	468
Other	6	2	8
TOTAL	1243	931	2174



Class Standings - Undergraduate (Historical)

	1993	1994	1995	1996	1997	1998	1999	2000	2001
Freshman	542	517	542	497	597	640	651	632	690
Sophomore	502	513	482	503	464	563	581	586	528
Junior	519	514	472	400	428	366	453	489	480
Senior	461	439	443	435	412	409	359	430	468
Other	21	16	11	16	7	9	18	18	8



Ethnicity (Fall 2001)

	Undergraduate		Graduate & Post Bacc		Law	
	#	%	#	%	#	%
African American	80	3.7%	25	7.6%	39	5.2%
Native American	14	0.6%	2	0.6%	4	.5%
Asian	45	2.1%	7	2.1%	13	1.7%
Hispanic / Latino	123	5.7%	13	3.9%	53	7.1%
White (US Resid)	1789	82.3%	260	79.2%	602	80.3%
Intl / Res. Alien	87	4.0%	13	3.9%	31	4.1%
Other / Unknown	36	1.6%	9	2.7%	8	1.1%

Enrollment By Ethnicity - Undergraduate (Historical)

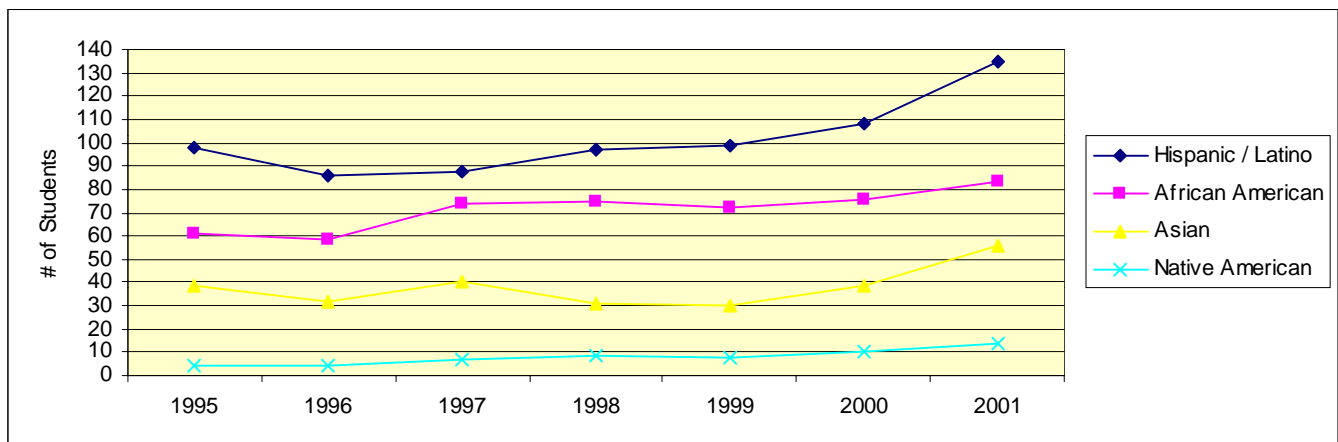
	Fall 1995	Fall 1996	Fall 1997	Fall 1998	Fall 1999	Fall 2000	Fall 2001
African American	61	58	74	75	72	76	80
Native American	4	4	7	9	8	10	14
Asian	39	32	40	31	30	39	45
Hispanic / Latino	98	86	88	97	99	108	123
White (US Resid)	1637	1562	1621	1664	1706	1766	1789
Intl / Non-Res. Alien	111	109	78*	111	147	156	87
Other / Unknown							36
Total	1950	1851	1908	1987	2062	2155	2174

Source: IPEDS Enrollment Reports

*Some International/Alien students were classified into specific ethnic groups

ALANA Enrollment - Undergraduate (Historical)

	Fall 1995	Fall 1996	Fall 1997	Fall 1998	Fall 1999	Fall 2000	Fall 2001
Hispanic / Latino	98	86	88	97	99	108	135
African American/ Black	61	58	74	75	72	76	83
Asian	39	32	40	31	30	39	56
Native American / Alaskan	4	4	7	9	8	10	14

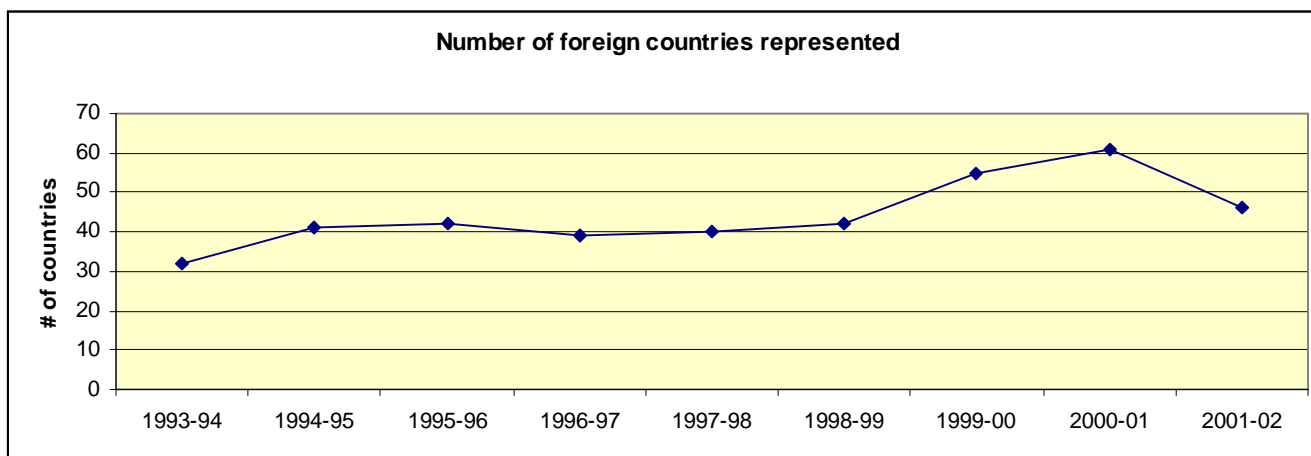


International / Non-Resident Students Home country - Undergraduate (Fall 2001)

Uzbekistan	6	Curacao	2	Netherland Antilles	1
Germany	5	Dominican Republic	2	Nigeria	1
Cayman Islands	4	Antigua	1	Peru	1
Norway	4	Azerbaijan	1	Poland	1
Russia	4	Bosnia	1	South Africa	1
Venezuela	4	France	1	Spain	1
Brazil	3	Ghana	1	St. Marteen	1
Canada	3	Honduras	1	Sweden	1
Colombia	3	Hungary	1	Switzerland	1
England	3	Italy	1	Taiwan	1
Finland	3	Jamaica	1	Trinidad & Tobago	1
India	3	Japan	1	Ukraine	1
Bahamas	2	Kazakhstan	1	Uruguay	1
Bangladesh	2	Krygzstan	1	Yugoslavia	1
Bulgaria	2	Lebanon	1	Netherland Antilles	1
Cayman Islands	2				

Number of Foreign Countries represented (Historical)

1993-94	1994-95	1995-96	1996-97	1997-98	1998-99	1999-00	2000-01	2001-02
32	41	42	39	40	42	55	61	46



Enrollment by Home State - Undergraduate (Fall 2001)

Enrollment by Home State - Undergraduate (Historical)

	1994	1995	1996	1997	1998	1999	2000	2001
Alabama	6	3	0	1	1	8	6	6
Alaska	0	0	0	0	0	1	1	1
Arizona		2	2	1	0	0	2	2
Arkansas	3	3	2	1	1	1	2	2
California	2	1	2	2	4	5	5	5
Colorado	4	5	2	8	5	3	2	1
Connecticut	26	23	15	19	21	26	27	24
Delaware	0	0	0	0	0	0	0	0
District of Columbia	0	1	2	2	0	0	0	1
Florida	1535	1465	1399	1432	1510	1530	1606	1657
Georgia	57	51	33	32	39	45	40	52
Hawaii	0	0	1	1	0	0	0	0
Idaho								1
Illinois	5	6	12	12	16	15	16	16
Indiana	7	7	8	11	7	7	7	6
Iowa	0	0	1	4	4	3	2	0
Kansas	0	0	0	0	2	3	3	5
Kentucky	9	9	9	8	7	11	5	4
Louisiana	4	4	2	2	3	3	4	2
Maine	4	7	8	8	5	6	3	2
Maryland	11	12	13	16	14	12	9	14
Massachusetts	24	22	23	33	33	34	33	45
Michigan	6	8	12	8	6	6	2	2
Minnesota	6	4	4	5	3	3	4	4
Mississippi	1	2	1	1	2	2	3	3
Missouri	6	6	5	7	9	10	11	9
Nebraska	0	0	0	1	0	0	0	0
Nevada	1	0	0	0	2	2	1	0
New Hampshire	3	5	6	7	6	6	15	13
New Jersey	28	28	28	25	15	12	12	14
New Mexico	1	1	1	1	2	2	1	1
New York	40	49	43	46	47	45	41	47
North Carolina	5	8	6	11	11	9	12	10
North Dakota	0	0	0	0	0	0	0	1
Ohio	21	17	17	15	12	13	11	14
Oklahoma	2	4	2	1	2	2	4	5
Oregon	0	1	1	3	3	3	3	1
Pennsylvania	8	11	13	17	16	23	28	22
Puerto Rico	3	2	2	1	0	0	1	2
Rhode Island	8	8	7	10	5	3	4	4
South Carolina	5	5	6	5	10	12	11	12
South Dakota	0	0	1	0	1	1	1	1
Tennessee	10	10	8	10	10	9	9	11
Texas	9	4	9	10	15	13	17	16
Utah	0	0	1	1	1	1	0	3
Vermont	2	2	2	3	2	2	4	3
Virginia	18	14	12	7	3	7	14	17
Washington	3	5	2	1	1	1	1	1
West Virginia	0	1	1	1	1	1	1	2
Wisconsin	4	4	6	2	1	3	5	5
Armed Forces	2	1	0	1	0	3	1	3
	1889	1821	1730	1793	1858	1907	1990	2072

Undergraduate Enrollment by Florida County (Historical)

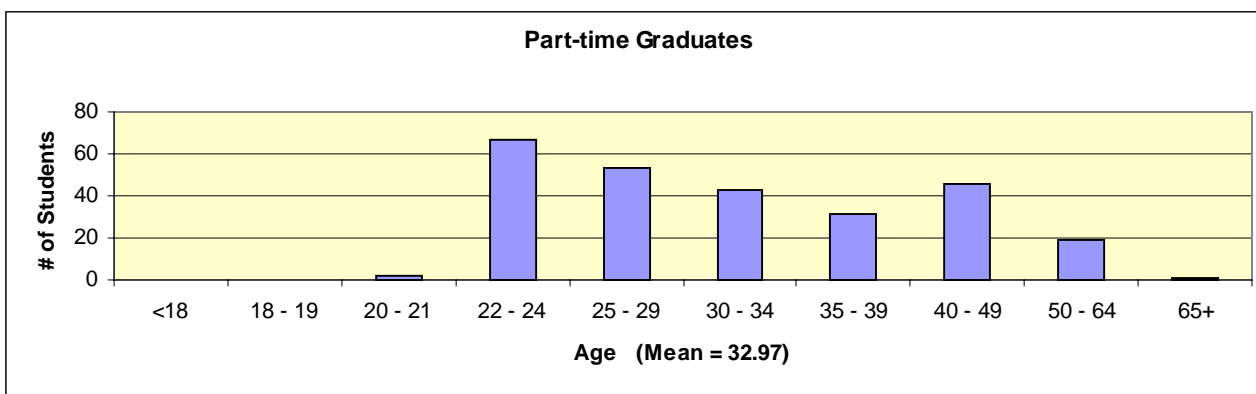
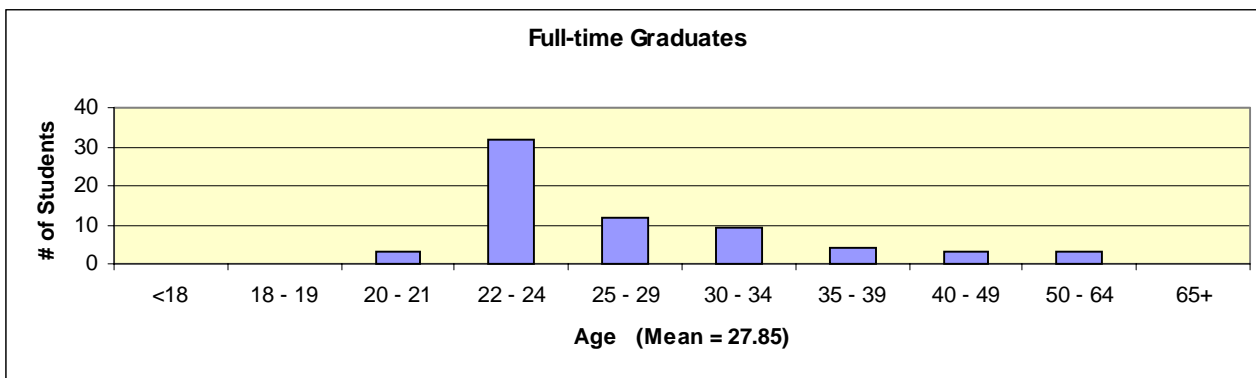
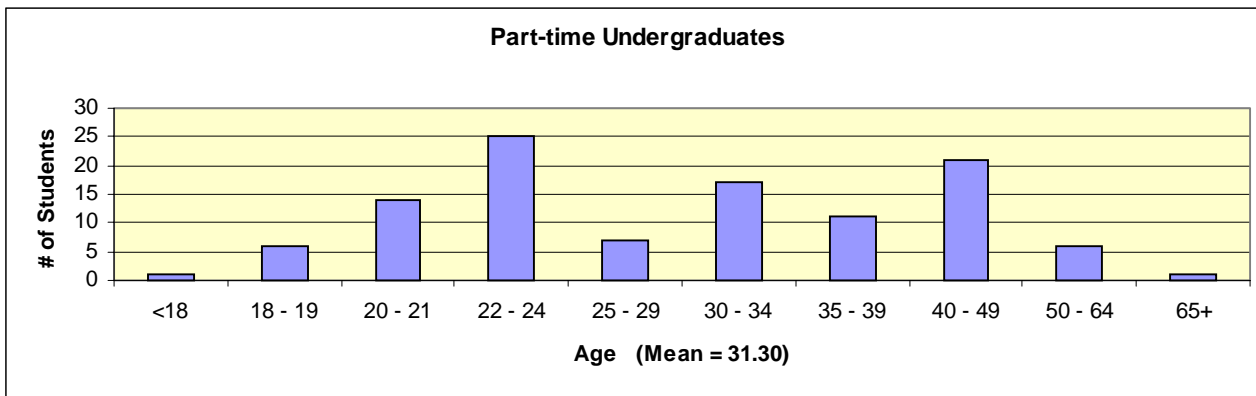
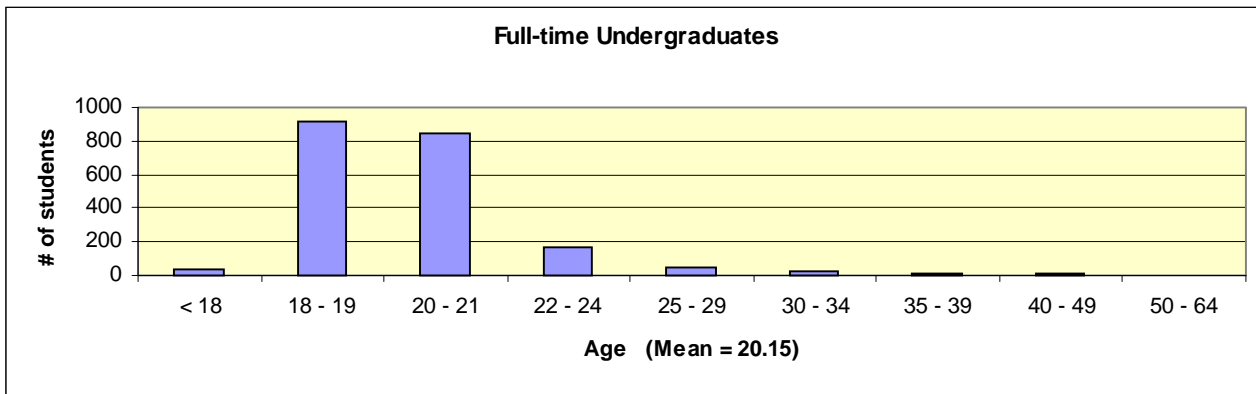
	1997	1998	1999	2000	2001
Alachua	13	18	17	15	10
Bay	5	9	11	10	10
Bradford	2	3	2	2	1
Brevard	55	67	68	73	71
Broward	65	56	59	73	62
Charlotte	14	14	13	11	10
Citrus	5	5	6	10	16
Clay	14	15	15	12	8
Collier	38	34	34	33	35
Columbia	8	5	4	3	2
Dade	40	38	32	27	24
Desoto	1	2	2	2	2
Dixie	1	2	2	2	2
Duval	46	46	44	46	50
Escambia	6	6	5	9	11
Flagler	15	14	18	17	21
Gadsden	1	1	1	2	1
Gilchrist	1		1		
Gulf	1		2	2	4
Hardee	1		1	1	1
Hendry	2	2	1	1	
Hernando	12	11	8	5	8
Highlands	5	9	8	9	5
Hillsborough	60	60	55	49	44
Holmes	1	1			
Indian River	19	27	35	36	35
Jackson				1	
Jefferson		2	1	1	1
Lafayette			2	1	1
Lake	35	41	31	34	40

	1997	1998	1999	2000	2001
Lee	54	58	66	52	49
Leon	22	17	19	15	13
Levy			1		
Madison					1
Manatee	6	12	17	17	17
Marion	25	27	29	27	33
Martin	24	23	22	33	29
Monroe	5	7	9	9	8
Nassau	5	3	2	2	2
Okaloosa	8	11	10	9	9
Okeechobee	1	2			1
Orange	95	106	106	96	112
Osceola	8	15	16	13	14
Palm Beach	67	67	58	74	89
Pasco	17	15	18	18	15
Pinellas	66	75	72	76	76
Polk	43	36	45	40	34
Putnam	8	7	10	7	7
Santa Rosa	1	3	2	2	4
Sarasota	35	38	43	49	53
Seminole	65	68	85	80	99
St. Johns	14	13	16	17	19
St. Lucie	27	31	26	25	24
Sumter	1	1	1		
Suwannee		1	1	1	2
Taylor			1		
Union					1
Volusia	379	385	376	447	468
Walton			1	1	

Enrollment by Religious Affiliation - Undergraduate (Fall 2001)

Anglican	7	Episcopal	41	Presbyterian	77
Assembly of God	14	Evangelical Ref	2	Protestant Christian	182
Baptist	205	Greek Orthodox	10	Quaker	5
Brethren, Nonspec	2	Hindu	7	Reformed	2
Buddhism	2	Islam	2	Seventh Day Adventist	4
Catholic	396	Jain	1	United Church of Christ	1
Church of Christ	13	Jewish	31	Unitarian	1
Church of God	6	Lutheran	49	Universalist	1
Church of the Nazarene	3	Mennonite	5	Wiccan	1
Christadelphian	1	Methodist	135	Non Denominational	37
Christian Science	1	Morman Latter Day Saints	2	No preference	672
Congregational	1	Others	28	Unknown	192
Disciples of Christ	22	Pentacostal Holiness	13	TOTAL	2174

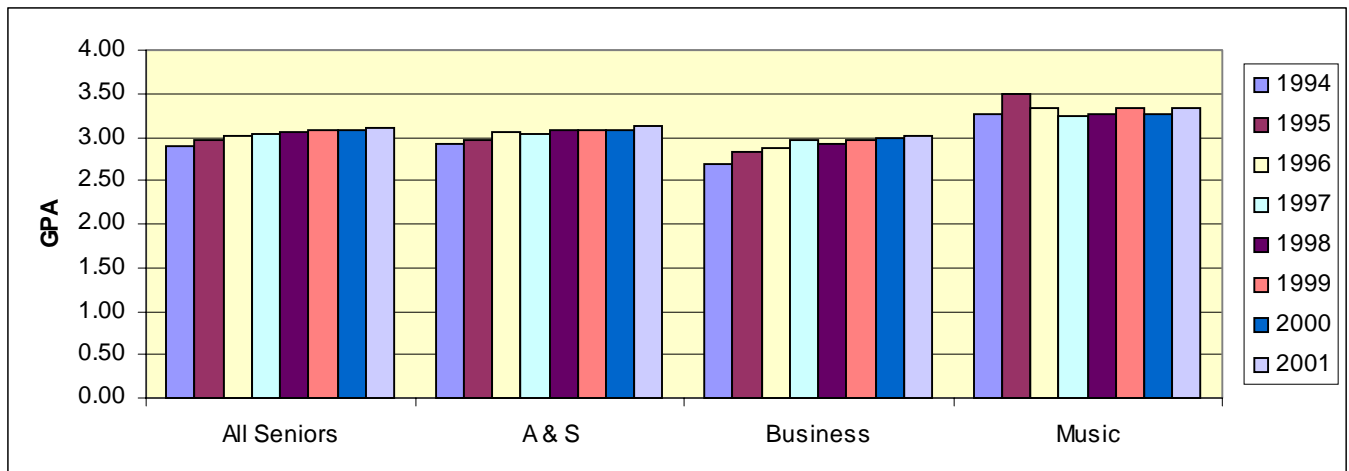
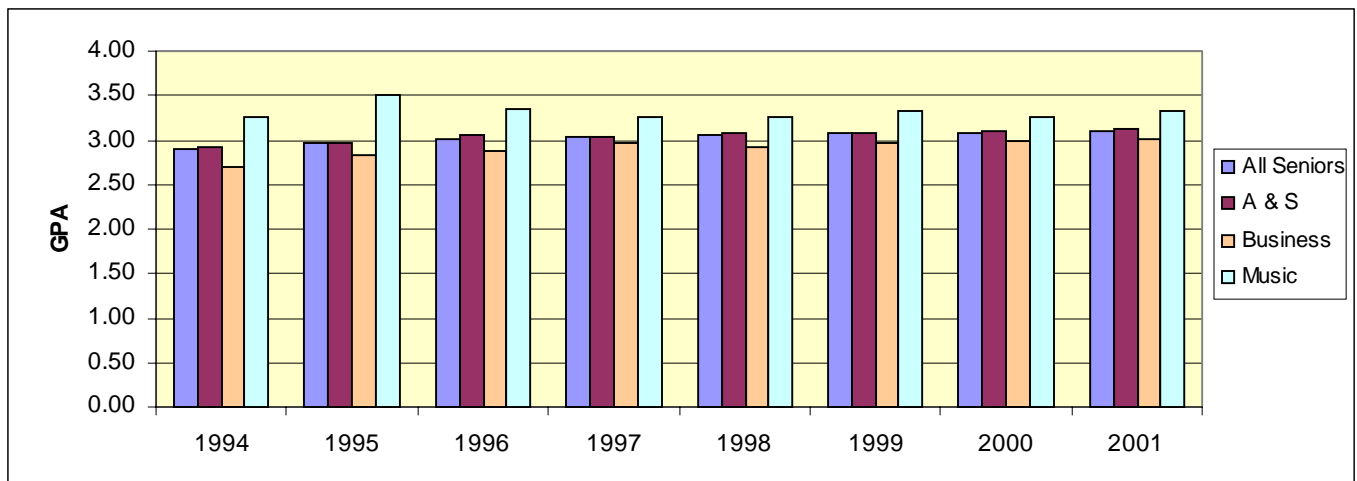
Age Distribution (Fall 2001)



Average Senior GPA's (Historical)

(Spring Semester)	1994	1995	1996	1997	1998	1999	2000	2001
All Seniors	2.90	2.97	3.02	3.03	3.05	3.07	3.07	3.11
Arts & Sciences	2.93	2.97	3.05	3.03	3.08	3.08	3.09	3.13
Business	2.70	2.83	2.87	2.97	2.92	2.97	2.98	3.02
Music	3.26	3.50	3.34	3.25	3.26	3.33	3.26	3.33

	All seniors	A & S	Business	Music
95th Percentile (Top 5%)	3.87	3.87	3.86	3.97
90th Percentile (Top 10%)	3.75	3.75	3.72	3.89
80th Percentile (Top 1/5)	3.61	3.63	3.53	3.69
75th Percentile (Top 1/4)	3.53	3.56	3.44	3.64
67th Percentile (Top 1/3)	3.41	3.45	3.83	3.49
60th Percentile (Top 40%)	3.30	3.30	3.20	3.42
50th Percentile (Top 1/2, median)	3.15	3.15	3.04	3.39
40th Percentile	3.01	3.03	2.88	3.26
25th Percentile	2.70	2.76	2.61	3.14



Class Statistics

Average Class Size - Undergraduate (Fall 2001)

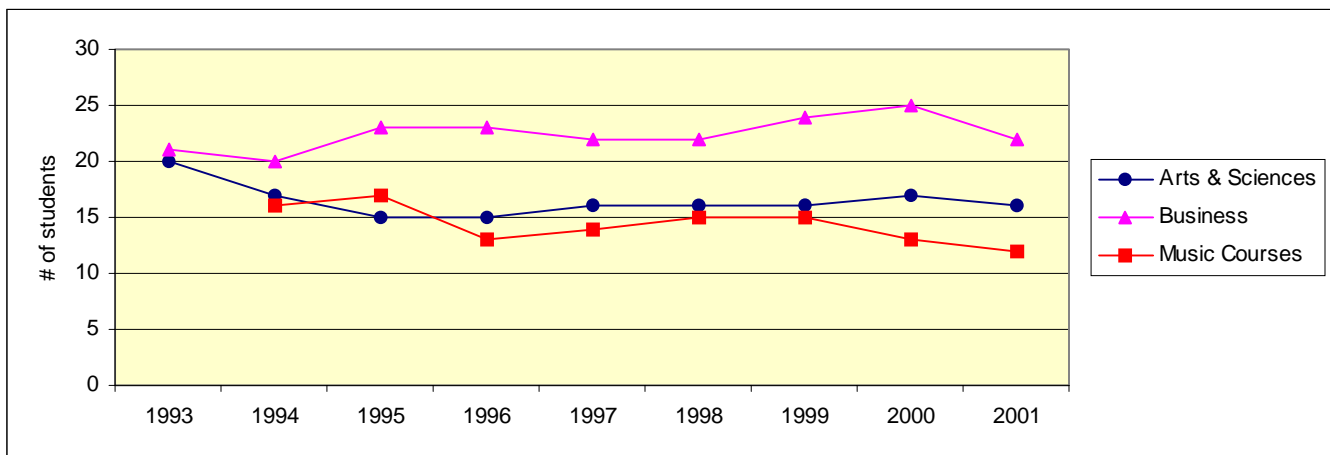
	Lower Level	Upper Level	Combined
Arts & Sciences	21	11	16
Education	20	10	13
Humanities	19	10	15
Natural Sciences	22	10	17
Social Sciences	25	13	19
Business	27	21	22
Music Courses	14	9	12
Music Ensembles	20	17	18
Applied Music	3	2	2

Independent Study is excluded from the above. The number of Independent Study sections across all schools = 94. Average class size = 1

Average Class Size - Undergraduate (Historical)

	1993	1994	1995	1996	1997	1998	1999	2000	2001
Arts & Sciences	20	17	15	15	16	16	16	17	16
Education	19	15	15	14	13	14	12	14	13
Humanities	19	15	15	13	14	16	15	17	15
Natural Sciences	22	19	19	16	17	18	18	18	17
Social Sciences	21	18	18	18	18	18	17	21	19
Business	21	20	23	23	22	22	24	25	22
Music Courses	*	16	17	13	14	15	15	13	12
Music Ensembles	*	12	13	12	14	15	15	17	18
Applied Music	*	1	2	2	2	2	2	3	2

*Data not available



STUDENT LIFE

Athletics

Intercollegiate Athletics

Stetson is a member of the National Collegiate Athletic Association, and both men's and women's teams compete on a Division I level. Hatter basketball and baseball teams play national schedules and have achieved ranking as major powers.

Men's Teams

Baseball
Basketball
Crew
Cross Country
Golf
Soccer
Tennis

Women's Teams

Basketball
Crew
Cross Country
Golf
Soccer
Softball
Tennis
Volleyball

Intramural Program

The Intramural Program offers young men and women the opportunity to manage, officiate, direct and participate in physical activities with the conviction that this participation will promote stability, coordination, sportsmanship, and a sense of leadership which will touch all aspects of their lives. The following sports are available to both men and women:

Basketball
Billiards
Bowling
Dodge Ball
Flag Football

Indoor Volleyball
Indoor Soccer
Outdoor Soccer
Raquetball
Sand Volleyball

Softball
Swimming
Table Tennis
Tennis
Ultimate Frisbee
Water Polo

Organizations and Clubs

Stetson has many organizations open to all students, affording a variety of activity. Membership in some organizations is based upon special interests or academic achievement; others are primarily social.

Social Organizations

Social Sororities

Alpha Chi Omega
Alpha Kappa Alpha
Alpha Xi Delta
Delta Delta Delta
Pi Beta Phi
Zeta Tau Alpha

Social Fraternities

Alpha Phi Alpha
Alpha Tau Omega
Lambda Chi Alpha
Phi Sigma Kappa
Pi Kappa Phi
Sigma Nu
Sigma Phi Epsilon

Honorary Organizations

Beta Beta Beta (Biology)	Phi Alpha Theta
Gamma Sigma Epsilon (Chemistry)	Phi Beta Kappa (General)
Gamma Theta Upsilon (Geology)	Phi Theta Kappa Alumni
Lambda Pi Eta	Pi Kappa Delta
Mortar Board	Pi Kappa Lambda (Music)
Omicron Delta Epsilon	Psi Chi (Psychology)
Omicron Delta Kappa (Leadership)	Rho Lambda
Order of Omega	Sigma Delta Pi (Spanish)
Phi Alpha Delta (Pre-Law)	Sigma Pi Sigma (Physics)

Academically Related Organizations

<i>College of Arts & Sciences</i>	<i>School of Business</i>
American Chemical Society	Alpha Kappa Psi
American Medical Student Association	American Marketing Association
Deutsh Club (German)	Association for Computing Machinery
Phi Alpha Theta (History)	Stetson Accounting Association
Society of Physics Students	
Theta Alpha Phi (Theatre)	<i>School of Music</i>
	American Choral Directors Association
<i>Education Program</i>	Collegiate Music Educators Convention
Chi Sigma Iota (Counseling)	Phi Mu Alpha Sinfonia
Florida Future Educators of America	Sigma Alpha Iota
Kappa Delta Pi	Society of Composers, Inc.

Religious Organizations

Baptist Collegiate Ministry	Fellowship of Christian Athletes
Canterbury House	Intervarsity Christian Fellowship
Catholic Campus Ministry	Student Religious Life Council
Chi Alpha Christian Fellowship	Wesley House
	Young Life

Special Interest Organizations

Black Student Association	International Student Association	Stetson Mentoring for Achievement Campaign
Caribbean Club	Martial Arts Club	Student Alumni Association
Chess Club	MedEx	Swim Club
Club Bridge	Model Senate	Student Ambassadors
College Bowl Team	Sailing Club	Student Athletic Advisory Board
College Republicans	Stetson Gerontological	The Q.E.D. Club
Common Ground	Stetson Rugby Club	World Drum Club
H.O.L.A. (Latin American)	Stetson Young Democrats	
Indian Student Association	Stetson University Film Club	

Service Organizations

Best Buddies
Circle K International

Epsilon Sigma Alpha
Habitat for Humanity

Into the Streets
Roots and Shoots

Campus Life Organizations

Alcohol Advisory Board
Council for Student Activities (CSA)
Family Weekend
FOCUS
Greenfeather
Hatter Yearbook
Interfraternity Council (IFC)

Multicultural Student Council (MSC)
Panhellenic Council (PH)
Student Advisory Board
Student Government Association (SGA)
The Reporter (Newspaper)
Touchstone Literary Magazine / Poetry
At An Uncouth Hour

ADMINISTRATION, FACULTY AND STAFF

2001-02 Organizational Chart

Faculty

Full-time Faculty - by Rank, Gender, Ethnicity

	NR/ Alien	Black, non-Hispanic		Asian / Pacific Islander		Hispanic		White, non-Hispanic		Total	
	Women	Men	Women	Men	Women	Men	Women	Men	Women	Men	Women

As of 10/1/93

Professors		1						41	8	42	8
Associate professors						1	2	34	19	35	21
Assistant professors	2	1	1	1	1		1	32	17	34	22
Instructors/Lecturers					1			3	7	3	8
No Academic Rank								6	1	6	1
TOTAL	2	2	1	1	2	1	3	116	52	120	60

As of 10/1/95

Professors		1						41	6	42	6
Associate professors				1		1		36	19	38	19
Assistant professors			3	1	3		3	28	16	29	25
Instructors/Lecturers					1			3	5	3	6
TOTAL		1	3	2	4	1	3	108	46	112	56

As of 10/1/97

Professors		1		1				38	6	40	6
Associate professors		1			1	2	2	32	25	35	28
Assistant professors			3	1	2			25	17	26	22
Instructors/Lecturers									1		1
TOTAL		2	3	2	3	2	2	95	49	101	57

As of 11/1/99

Professors		1				1		42	10	44	10
Associate professors		1	1		1		2	39	20	40	24
Assistant professors		1	3	1	1	1		13	20	16	24
Instructors/Lecturers							3	4	9	4	12
Other faculty		1						3	4	4	4
TOTAL		4	4	1	2	2	5	101	63	108	74

As of 11/1/01

Professors		1						47	12	48	12
Associate professors		1	3		2		2	35	18	36	25
Assistant professors	1	3	1	1		3		12	23	20	24
Instructors/Lecturers						1	3	7	12	8	15
Other faculty				1				5	2	6	2
TOTAL	1	5	4	2	2	4	5	106	67	118	78

Source: IPEDS Fall Staff Survey

Percent of Full-Time teaching Faculty with Terminal Degrees - Historical

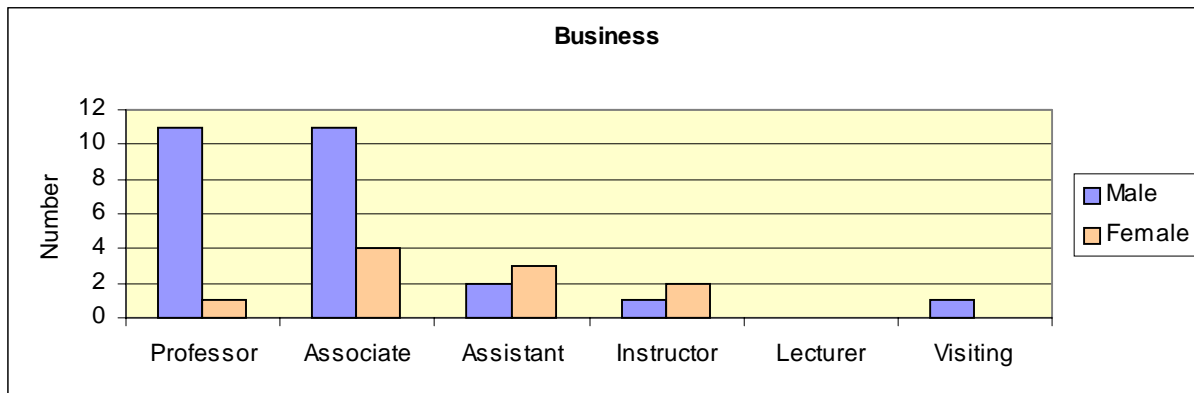
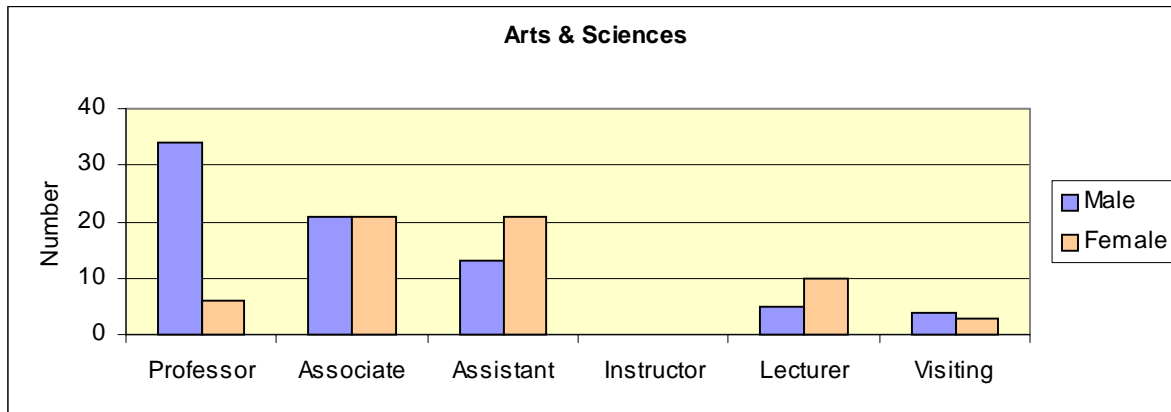
	1994	1995	1996	1997	1998	1999	2000	2001
Professors	100%	*	100%	100%	100%	100%	100%	100%
Associate Professors	100%	*	100%	100%	100%	98%	98%	98%
Assistant Professors	84%	*	85%	98%	90%	80%	83%	84%
Instructors/Lecturers/Visiting	38%	*	50%	38%	44%	50%	51%	54%
TOTAL	89%	*	93%	96%	90%	88%	87%	88%

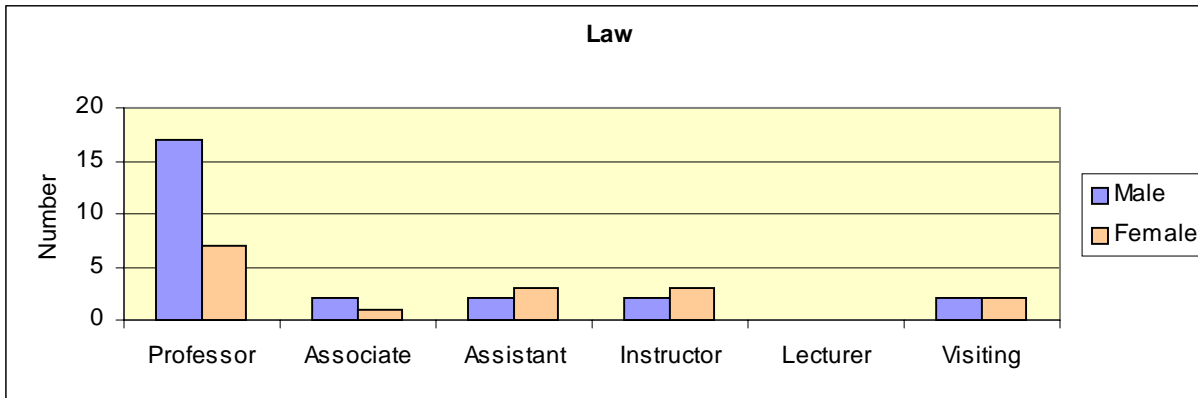
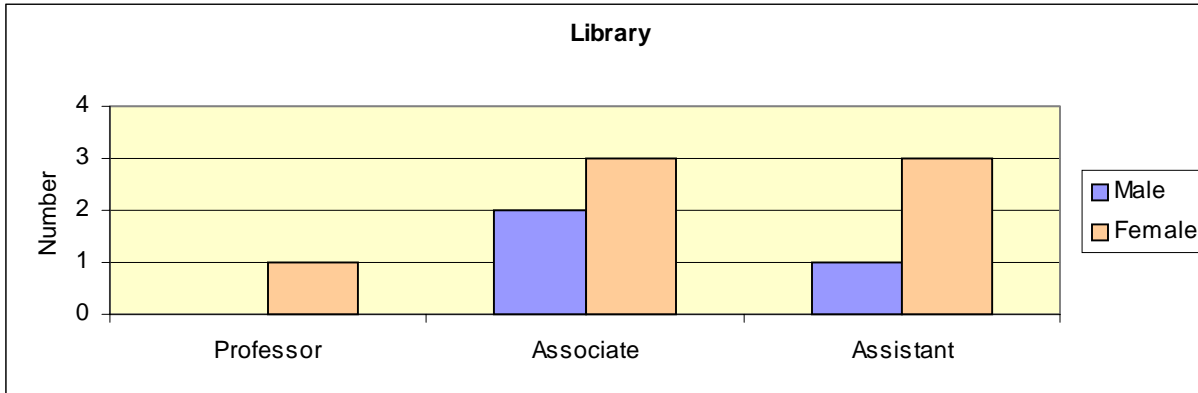
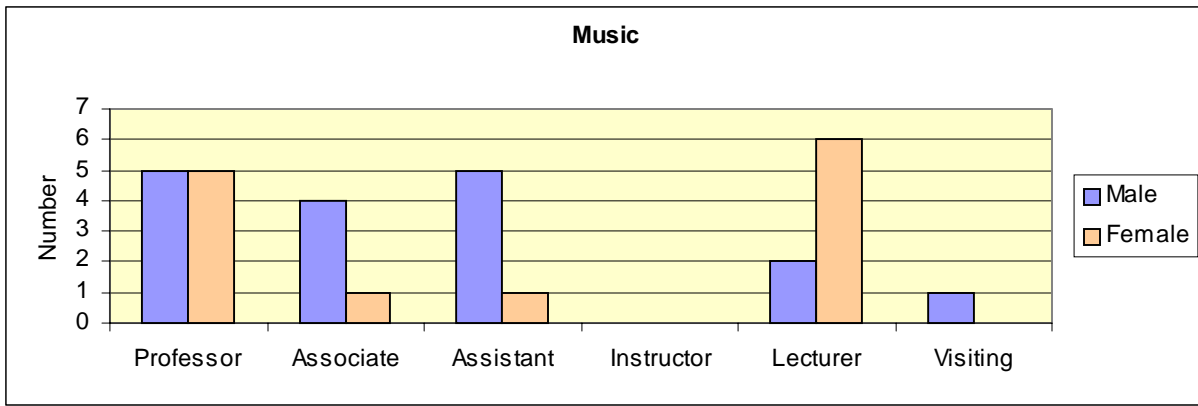
*Not available

Full-time Faculty By School and Gender (2001-02)

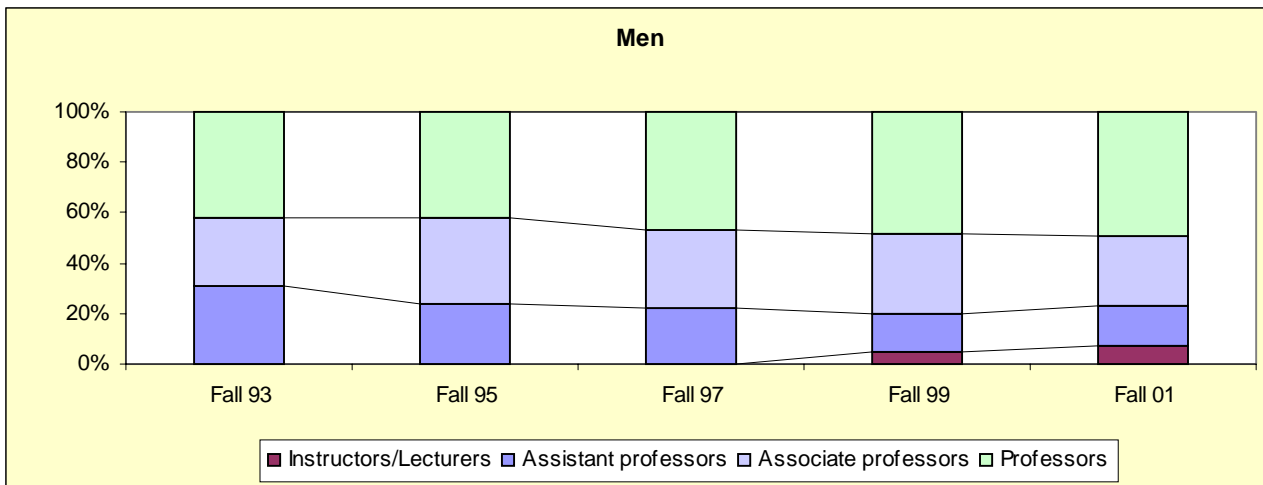
(includes Sabbaticals/Leaves)

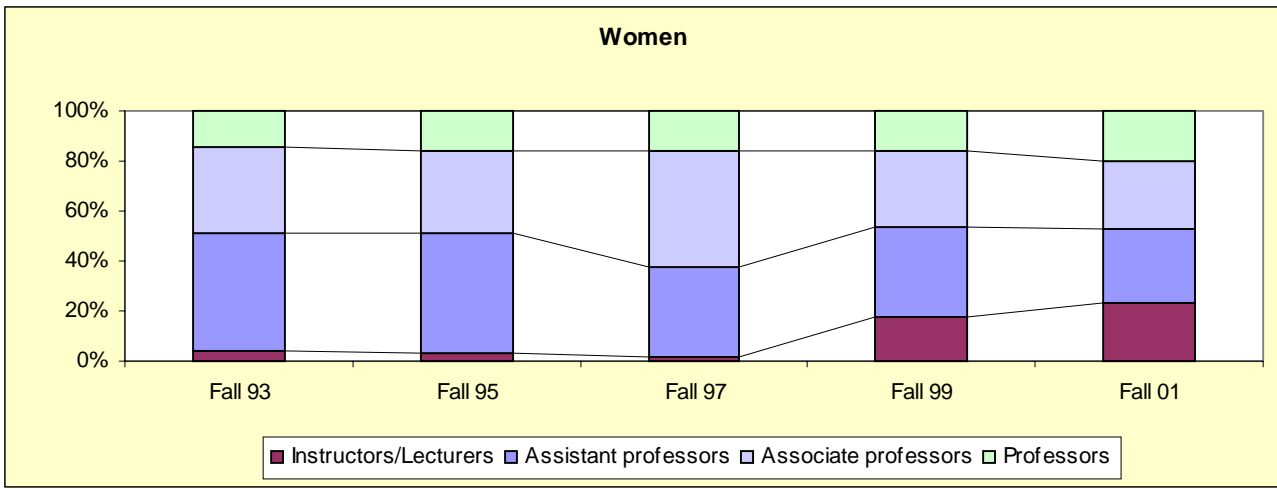
	Arts & Science		Business		Music		Library		Law	
	Male	Female	Male	Female	Male	Female	Male	Female	Male	Female
Professor	34	6	11	1	5	5		1	17	7
Associate	21	21	11	4	4	1	2	3	2	1
Assistant	13	21	2	3	5	1	1	3	2	3
Instructor			1	2					2	3
Lecturer	5	10			2	6				
Visiting	4	3	1		1				2	2
TOTAL	77	61	26	10	17	13	3	7	25	16





Full-time Instructional Faculty by Gender - Historical





Source: IPEDS Faculty Salary Survey

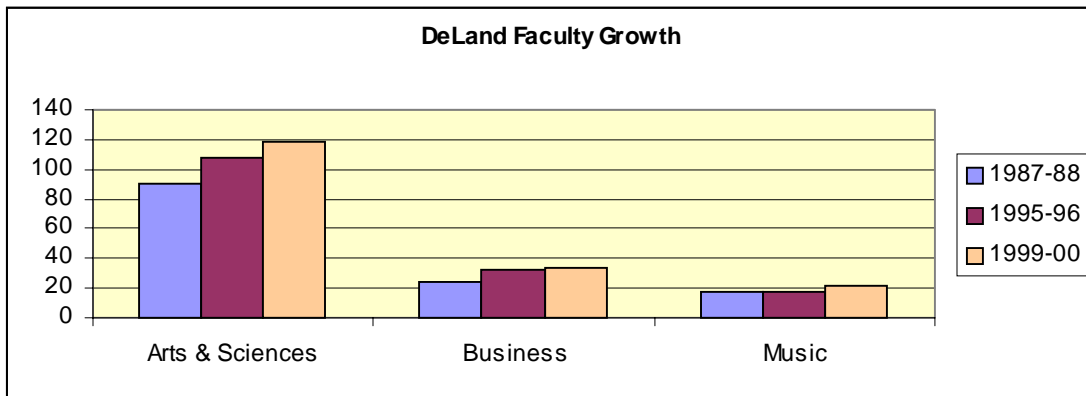
Faculty-Student Ratio

The table below shows the ratio of full-time equivalent undergraduate students to full-time equivalent instructional faculty for the fall semester.

Fall 1994	Fall 1995	Fall 1996	Fall 1997	Fall 1998	Fall 1999	Fall 2000
11 to 1	11 to 1	10.7 to 1	10.6 to 1	10.5 to 1	10.5 to 1	10.4 to 1

DeLand Full-time Faculty Growth (1987-88 to 1999-00)

	1987-88	1995-96	1999-00	Net Gain Since 1987-88	Net Gain Since 1995-96
Arts & Sciences	90	108	118	28	10
Business	24	32	33	9	1
Music	17.5	18	21	3.5	3
TOTAL	131.5	158	172	40.5	14



Presidents of Stetson University

H. Douglas Lee	1987- Present
Pope A. Duncan	1977 - 1987
George R. Borders	(Acting) July, 1976 to July, 1977
John E. Johns	1969 – 1976 (Acting, June, 1969 to April, 1970)
Paul F. Geren	1967 – 1969
J. Ollie Edmunds	1948 – 1967
Harry C. Garwood (acting)	September to December, 1947
William Sims Allen	1934 – 1947
Charles S. Farriss (acting)	January to August, 1934
Lincoln Hulley	1904 – 1934
Charles S. Farriss (acting)	September 1903 to September 1904
Warren S. Gordis (acting)	September, 1895 to June, 1896
John F. Forbes	1885 – 1903

Board of Trustees (2001-2002)

Robin Blanton Vero Beach, Florida (President, Alumni Association)	H. Douglas Lee DeLand, Florida
Cici R. Brown Daytona Beach, Florida	Lee McGraw Lewicki Osterville, Massachusetts
J. Hyatt Brown Daytona Beach, Florida	Carroll E. Lewis Ocala, Florida
S. Sammy Cacciatore, Jr. Melbourne, Florida	Christine E. Lynn Boca Raton, Florida
Nestor De Armas Orlando, Florida	Harvey L. Massey Maitland, Florida
Franklin T. Gaylord Eustis, Florida	Richard A. McMahan DeLand
Dolly Hand Belle Glade, Florida	Robert E. Montgomery Palm Coast, Florida
Mark C. Hollis Lakeland, Florida	Jane Edmunds Novak Ponte Vedra Beach, Florida
R. Dean Hollis Omaha, Nebraska	Thomas M. Pinner, Jr. Tampa, Florida
Joseph W. Landers, Jr. Tallahassee, Florida	Thomas Prince Winter Park, Florida

Terry J. Rhodes
Tallahassee, Florida

David B. Rinker
West Palm Beach, Florida

William Reece Smith, Jr.
Tampa, Florida

David M. Strickland
Jacksonville, Florida

Thomas E. Stringer, Sr.
Lakeland, Florida
(Chair, Law Board)

Arthur P. Sullivan
Palm Beach, Florida

Thomas F. Wands
DeLand, Florida

Al Weiss
Lake Buena Vista, Florida

Trustees Emeriti

Doyle E. Carlton, Jr.
Wauchula, Florida

Thomas R. Horton
DeLand, Florida

Dennis C. McNamara, Sr.
Orlando, Florida

John L. Pelham
East Palatka, Florida

B. Frank Wheeler, Jr.
Oviedo, Florida

Patricia M. Wilson
Frostproof, Florida

Ex-Officio Members

Mack N. Cleveland, Jr.
Sanford, Florida
(General Counsel)

Diane Disney
Washington, DC
(Chair, Arts & Sciences Board)

Pope Duncan
DeLand
(Chancellor)

Dennis Higginbotham
New Smyrna Beach, Florida
(on leave)

Jill Jinks
Atlanta, Georgia
(Chair, Business Board)

Lesa France Kennedy
Daytona Beach, Florida
(on leave)

Hal S. Marchman, Jr.
Holly Hill, Florida
(Assistant Secretary)

Earnest W. Murphy, Jr.
Daytona Beach, Florida
(Chair, Music Board)

Thomas W. Staed
Daytona Beach Shores
(on leave)

Thomas E. Stringer, Sr.
Lakeland, Florida
(Chair, Law Board)

Academic and Administrative Officers

H. Douglas Lee
President

Pope A. Duncan
Chancellor

Shahram Amiri
Vice President for Information Technology

James R. Beasley
*Vice President for Administration and Chief
Operating Officer*

Sally Dowling
Vice President for Finance

David S. Noyes, Sr.
Vice President for Facilities Management

Deborah Thompson
Vice President for Enrollment Management

F. Mark Whittaker
Vice President for University Relations

Susan Anderson
Executive Director for Alumni Relations

Brian G. Miller
*Executive Director of Marketing and
Communications*

Gary W. Vause
Vice President & Dean of the College of Law

Grady Ballenger
Dean of the College of Arts and Sciences

Paul E. Dascher
Dean of the School of Business Administration

James E. Woodward
*Dean of the School of Music and
Chair of the Council of Deans*

Dorothy E. Bressi
*Associate Vice President of College Relations,
College of Law*

Ronald D. Clifton
*Associate Vice President and Director of
Stetson University Center at Celebration*

Linda P. Davis
Associate Vice President for Planned Giving

Joseph J. Estenes, Jr.
*Associate Vice President for Business and
Operations, Director of Public Safety,
College of Law*

Academic Departments / Programs

College of Arts & Sciences

American Studies
Art
Biology
Chemistry
Communication Studies and Theatre Arts
Counselor Education
Economics
Teacher Education
English
Modern Languages & Literature
Geography & Environmental Science
History
Mathematics and Computer Science
Philosophy
Physics
Political Science
Psychology
Religious Studies
Sociology
Sport and Exercise Science

School of Business Administration

Accounting
Decision and Information Sciences
Finance
Management
Marketing

Special Programs

Africana Studies
Applied Ethics
Digital Arts
Discovery
Environmental Sciences
Family Business Center
Health Care Issues
Honors Program
Humanities
International Studies
Journalism
Latin American Studies
Russian Studies
Stetson Institute for Social Research
Women and Gender Studies

Chairs

Paul Jerome Croce
Dan Gunderson
Michael King
Peter Hauck
Kenneth McCoy
Lynn Landis Long
Neal Long
Elizabeth Heins
Thomas Farrell
Richard Ferland
Bruce C. Bradford
Kimberly Reiter
Erich Friedman
Rob Brady
Kevin Riggs
Anne Hallum
Toni Blum
Mitchell Reddish
Finnegan Alford-Cooper
Michele Skelton

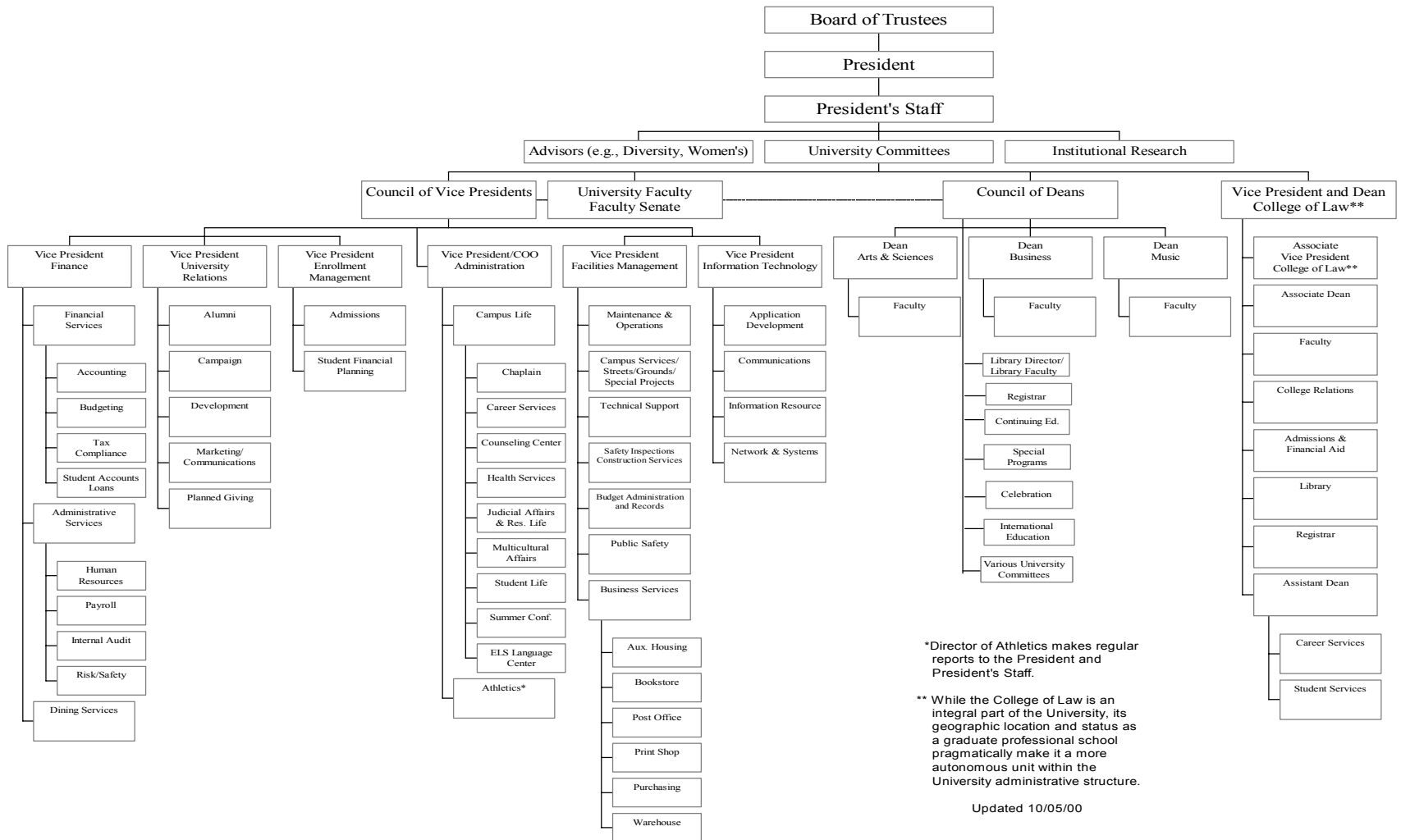
Chairs

Vincent C. Brenner
Betty M. Thorne
Lawrence J. Belcher
Monique Forte
Michelle A. DeMoss

Chair / Coordinator / Director

Paul Jerome Croce
Ronald Hall
Michael DeMurga
Leonard L. Nance
Eric Perramond
Gregory K. McCann
Michele Skelton
William Wayne Dickson
William Wayne Dickson
T. Wayne Bailey
Michael W. McFarland
William R. Nylen
Paul D. Steeves
John K. Schorr
Mary R. Pollock

Stetson University Organizational Chart 2000-2001



*Director of Athletics makes regular reports to the President and President's Staff.

** While the College of Law is an integral part of the University, its geographic location and status as a graduate professional school pragmatically make it a more autonomous unit within the University administrative structure.