

DeLand Campus Priority Projects



Through the planning process, the following six projects were identified as priorities for the DeLand Campus. While no specific time horizon has been assigned to these projects, it is anticipated that they and their associated site enhancements will be the first projects implemented as a part of the Campus Plan's vision.

1 Edmunds Center and Athletic Facility Improvements

Renovation of the existing Edmunds Center and a new exterior plaza for campus events. Expansion of beach volleyball, tennis, and additional space for visiting teams.

2 Hulley Tower

Rebuilding of the historic Hulley Tower and outdoor plaza space for gatherings in the campus heart.

3 Pedestrian Circulation and Landscape Enhancements

- a. Hollis Center pool plaza enhancements
- b. Michigan Ave street closure
- c. South neighborhood arts plaza
- d. Minnesota gateway enhancements on N. Woodland Blvd and N. Amelia Ave
- e. New sidewalk connection to ATC on north side of E. Minnesota
- f. Emily Hall street closure and pedestrianization
- g. Davis and Flagler plaza
- h. Pedestrian lighting and sidewalk improvements

4 Cummings Gym

Renovation and repurposing of the existing Cummings Gym for outward facing and community functions.

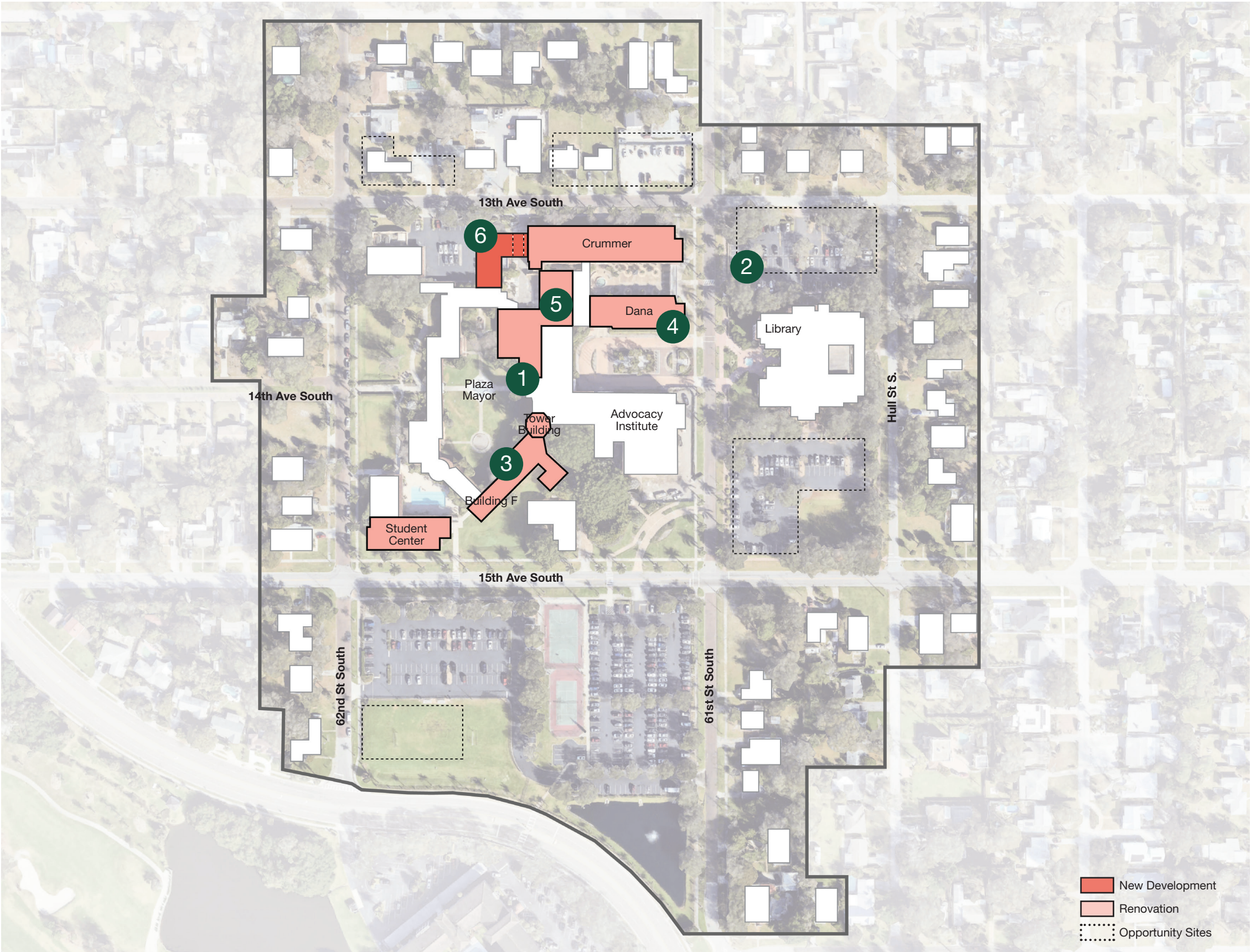
5 Greek Village

A new Greek Village that houses all current IFC & Panhellenic chapters, with flexibility to accommodate more, and provide a unified, equitable community.

6 Music and Creative Arts Center

New performance and instructional space for Music, Theater, Opera, and Creative Arts that fosters interdisciplinary collaboration and consolidation of programs.

Gulfport Campus Priority Projects



Through the planning process, the following six projects were identified as priorities for the Gulfport College of Law Campus. While no specific time horizon has been assigned to these projects, it is anticipated that they and their associated site enhancements will be the first projects implemented as a part of the Campus Plan's vision.

1 Plaza Mayor

Activate Plaza Mayor through furniture, programming, and by adding adjacent student life space.

2 Housing Master Plan

Housing and market demand study to follow campus master plan.

3 Tower Building

Consolidation of administrative functions into the Tower Building, Building F, and a portion of the 2nd floor of the Student Center.

4 Dana Hall

Consolidation of student support and services to be centrally located to the daily student experience and allow for administrative efficiencies.

5 Sebring Courtroom

Repurpose Sebring Courtroom and café for student life space.

6 Crummer Connector

Opportunity for purpose-built space and campus connectivity to Plaza Mayor. Requires demolition of Building H.