

INTRODUCTION

Dear Stetson Community:

Much of the planning and evaluation necessary to improve the effectiveness of the University begins with an understanding of basic institutional facts. The *Stetson University Fact Book* is prepared annually by the Institutional Research Office to provide a better understanding of a variety of issues at Stetson. By sharing and discussing this information, members of the Stetson community are able to more effectively contribute to the planning processes of the University. As you use this information, please let us know how future editions can be improved.

Dr. John M. Tichenor
Director of Institutional Research

GENERAL INFORMATION

Statement of Institutional Purpose Approved by the Board of Trustees, February 4, 2000

I. Educational Mission

Our mission at Stetson University is to provide an excellent education in a creative community where learning and values meet, and to foster in students the qualities of mind and heart that will prepare them to reach their full potential as informed citizens of local communities and the world.

At Stetson, the art of teaching is practiced through programs solidly grounded in a tradition of liberal learning that stimulates critical thinking, imaginative inquiry, creative expression, and lively intellectual debate. The art of learning is enhanced through small interactive classes, close student-faculty alliances, and collaborative approaches that provide the foundation for rewarding careers and advanced study in selective graduate and professional programs. We embrace diverse methodologies to foster effective communication, information and technological literacy, and aesthetic appreciation. We encourage the development of informed convictions, independent judgment, and lifelong commitments to learning that are characteristic features of the enlightened citizen. In bringing together learning and values, the University encourages all of its members to demonstrate personal integrity; to develop an appreciation for the spiritual dimension of life; to embrace leadership in an increasingly complex, interdependent, and technological world; and to commit to active forms of social responsibility.

II. Values and Vision

From its founding, Stetson University has affirmed the importance of spiritual life and the quest for truth in its educational mission. The University motto, *Pro Deo et Veritate* (“For God and Truth”), is a symbol of this commitment, and it expresses our determination to integrate the pursuit of a liberal education with the search for meaning in our lives and in our communities.

Chartered as an independent and comprehensive university, Stetson has had an historical relationship with the Christian community and the Baptist denominations. That relationship has shaped our commitment to build an inclusive community. Today, the University includes persons from diverse religious, ethnic, cultural, economic, and intellectual backgrounds. It is thus from varying perspectives that members of the University community have joined together to affirm collectively

- the centrality of knowledge, examined ideas, and independent judgment in the life of an educated person;
- the inherent dignity, worth, and equality of all persons;
- the importance of community in human life;
- the role of religious and spiritual quests for meaning in human experience;
- the value of diverse persons and differing ideas in an educational community;
- the responsibility we share to work toward social justice;
- the necessity for decisions to be guided by ethics and social responsibility; and
- the obligation of individuals and communities to act as responsible stewards of the natural environment.

In our curriculum and co-curricular activities, then, we aim to infuse traditional liberal education with the values of religious and spiritual life, ethical decision-making, human diversity and commonality,

gender equity, community service, and environmental responsibility. We aspire to develop distinctive, innovative, and interdisciplinary undergraduate and graduate programs that are centered on vigorous intellectual inquiry, informed by these values, increasingly global in perspective, and worthy of local and national recognition.

III. Heritage and Character

Florida's first private university, Stetson University was founded in 1883 by Henry A. DeLand, a New York philanthropist, as DeLand Academy. In 1887, the Legislature of the State of Florida enacted the Charter of DeLand University as an independent institution of higher learning. The university's name was changed in 1889 to honor John B. Stetson, the nationally-known hat manufacturer who gave generously of his time and means to advance the quality and reputation of the institution, and who served, with Mr. DeLand and others, as a founding trustee of the University. The first charter stated that the objective of the University should be "to promote the general interests of education, and to qualify its students to engage in the learned professions or other employments of society, and to discharge honorably and usefully the various duties of life." Stetson's first president, Dr. John F. Forbes, clearly described the commitment to teaching that has been a hallmark of the University throughout its history:

Buildings, libraries and apparatus are good and give added power, but the vital contact of students with a vigorous and stimulating mind and heart--this is the sine qua non of a successful education...The most important thing is to find men and women of large heart and mind, apt to teach and full of enthusiasm and stimulating power...to develop in the student the habit of independent judgment--of investigating statements and principles for oneself, and thus for oneself discover their truth or falsity.

Today, Stetson University is a non-sectarian, comprehensive, private university composed of individually strong undergraduate programs in various colleges and schools, and a selected group of academically distinctive graduate, professional, and continuing education programs. We seek academically talented individuals with leadership potential and records of personal growth and community service. We promote and support scholarly and creative activity among students, faculty, and staff as a means to enhance learning, teaching, and professional development, and as a contribution to the broader base of knowledge.

Accreditation

- ◆ Accredited by the Commission on Colleges of the Southern Association of Colleges and Schools (1866 Southern Lane, Decatur, Georgia 30033-4097, Telephone (404) 679-4501) to award the Bachelor's, Master's and Specialist in Education degrees in the College of Arts and Sciences; Bachelor's degrees in the School of Music; Bachelor's and Master's degrees in the School of Business Administration; and the Juris Doctor and the Master of Laws degree in the College of Law.
- ◆ AACSB International – The Association to Advance Collegiate Schools of Business
- ◆ American Bar Association
- ◆ American Chemical Society
- ◆ Council for Accreditation of Counseling and Related Educational Programs
- ◆ National Association of Schools of Music
- ◆ National Council for Accreditation of Teacher Education

Historical Timeline

- 1883 Henry A. DeLand founds the DeLand Academy, November 5, originally housed in the First Baptist Church.
- 1884 DeLand Hall is completed, the first building in Florida to be continuously used for higher education.
- 1885 The institution becomes DeLand College, and John Franklin Forbes is named the first president. An affiliation with the Florida Baptist Convention is achieved.
- 1886 Stetson Hall (oldest residence hall in Florida) is occupied.
- 1887 The Florida legislature grants the charter to DeLand University defining a self-perpetuating Board of Trustees to be three-fourths Baptists with the president also to be a Baptist.
- 1889 The name is changed to John B. Stetson University, and Mr. Stetson becomes chairman of the Board of Trustees.
- 1892 Elizabeth Hall is built by Mr. Stetson--the north and south wings are completed in 1897.
- 1898 The *Florida Times Union* calls Presentation Day, February 10, "the most memorable day in...higher education" in Florida. President William R. Harper of the University of Chicago addresses the gathering leading to an affiliation (May 17) with Chicago until 1908. The University receives the wings of Elizabeth Hall, the Monroe Health Museum, and \$100,000 endowment Forbes has collected. This latter makes the University no longer dependent upon the largess of any one person.
- 1900 College of Law is founded as first law school in Florida.
- 1902 Flagler Hall becomes home of Law and Technology.
- 1904 The colorful Lincoln Hulley becomes president.
- 1907 Efforts by Baptists to change charter fail; Florida Baptist Convention founds Columbia College.

- 1908 Sampson Hall is constructed as the University's library.
- 1919 With the closing of Columbia College, a new agreement, the "Hulley-Rogers Agreement," is made with the Florida Baptist Convention giving it a voice in choosing trustees.
- 1932 Stetson joins Southern Association of Colleges and Schools. Hulley resists this action believing Stetson does not need this endorsement.
- 1934 President Hulley dies, January 20. Charles S. Farriss is named acting president. In August, William Sims Allen becomes the third president of Stetson.
- 1938 Most remembered football game, Stetson beats Florida, 16-14.
- 1943 Low point of enrollment during World War II, 362. With war's end, enrollment booms to 2,554 in 1947.
- 1947 President Allen's poor health causes him to resign in September; Dean Harry Garwood is named acting president.
- 1948 J. Ollie Edmunds assumes presidency, January 1, welcomed by William Hugh McEniry, Acting Dean, and Fred (Bud) Dickinson, President of Student Association.
- 1954 The beautiful Commons Building burns at Christmas. Carlton Union Building succeeds it (1957). College of Law moves to St. Petersburg.
- 1960 Stetson becomes first white college in Florida to admit a black student, Cornelius Hunter.
- 1963 Ford Foundation challenge grant of \$1,500,000 is largest single grant to that date. Matching funds are secured.
- 1964 The duPont-Ball Library is dedicated.
- 1967 President Edmunds resigns and Paul F. Geren becomes president.
- 1969 President Geren resigns; the day before his resignation is to take effect, he is killed in an automobile accident.
- 1970 Vice President John Johns, after serving as acting president, following President Geren's death, becomes the sixth president.
- 1974 Edmunds Center is built as a field house and multi-purpose assembly hall.
- 1976 President Johns goes to Furman University as president, and George Borders becomes acting chief administrator.
- 1977 Pope A. Duncan becomes Stetson's seventh president.
- 1978 A program of renovation of older buildings is inaugurated. Acquisition of Gillespie Museum property begins a series of real estate purchases to redefine the south boundary of the campus. Position of provost is established.
- 1979 Ten-year \$50 million campaign begins. The university's first \$1 million gift is committed by Kenneth Kirchman, trustee alumnus. The campaign is successfully concluded in five years, 1984.
- 1982- 83 Centennial of the University is celebrated with year-long activities. Gilbert Lycan's *Stetson University: The First 100 Years* is published. Phi Beta Kappa, Gamma of Florida, is installed as first chapter in a private university in Florida. Roland George Investments Program is begun. In 1989 the Roland and Sarah George Institute for Applied Investments is funded by a bequest in the will of Sarah George.

- 1984 Chancellor J. Ollie Edmunds dies. Master of Accountancy added. College of Liberal Arts becomes College of Arts & Sciences. School of Music adds Bachelor's degree in Musical Theatre.
- 1985 Stetson joins Trans America Athletic Conference and is a founding member of the women's New South Conference. The John T. Rosa bequest funds purchase of apartments at the College of Law. New Community School of the Arts is inaugurated.
- 1986 A master campus plan is developed.
- 1987 H. Douglas Lee, Executive Vice President, succeeds President Duncan as president and Duncan becomes Chancellor. The sorority houses are dedicated. A \$200 million fund campaign is approved. Hollis Leadership Development Program is funded. Major renovations begin at the College of Law.
- 1989 Griffith Hall, which houses admissions and financial aid, is completed. A master campus landscaping plan which begins the reforestation of Woodland Boulevard is approved.
- 1990 Law School team wins A.B.A. National Mock Trial Competition for second year in a row. The Lynn Center is purchased with a gift of \$3 million from E. M. Lynn, an alumnus. For the sixth year *U.S. News and World Report* ranks Stetson among the best comprehensive universities in the South. A new agreement is made with the Florida Baptist Convention reducing its role in Trustee nominations and reducing its financial support but continuing an affiliation.
- 1991 South African Archbishop Desmond Tutu, winner of the 1984 Nobel Peace prize, speaks out on global conflicts as the inaugural speaker of the James A. Stewart Lecture Series presented by Stetson's Institute for Christian Ethics. William M. and Nina B. Hollis Foundation Inc., makes a gift of \$4.5 million, \$4 million of which establishes a scholarship fund.
- 1992-93 In collaboration with Disney Development Company and the Osceola County School Board, Stetson plans a model school and teaching academy at Celebration. Former President Jimmy Carter gives the Stewart Lecture.
- 1993-94 The \$200 Million Campaign passes the \$106 million mark. A revised charter and by-laws reaffirm Stetson's identity as an independent institution. Baptist funding drops to \$17,000.
- 1994-95 Trustee Mark Hollis and his wife, Lynn, provide \$2.5 million toward the construction of a student activities center. The first School of Music Gala fills the 2,500-plus-seat Peabody Auditorium in Daytona Beach.
- 1995-96 In a message titled "On the Threshold of the 21st Century," Holocaust survivor, Nobel Peace Prize laureate and author Elie Wiesel presents the James A. Stewart Lecture. The College of Law is ranked first in the nation for its trial and appellate programs in the 1995 *U.S. News and World Report's* survey of graduate school programs. Stetson and the Florida Baptists terminate all formal and informal relationships. The endowment climbs to over \$80 million. In a formal inaugural ceremony, the Howard Thurman Program is established to integrate the works of scholars and community leaders to seek solutions to social, religious and ethnic problems.
- 1997-98 Named for Mark and Lynn Hollis of Lakeland, the \$4.3 million, 33,000-square-foot Hollis Center for fitness and recreation is dedicated.

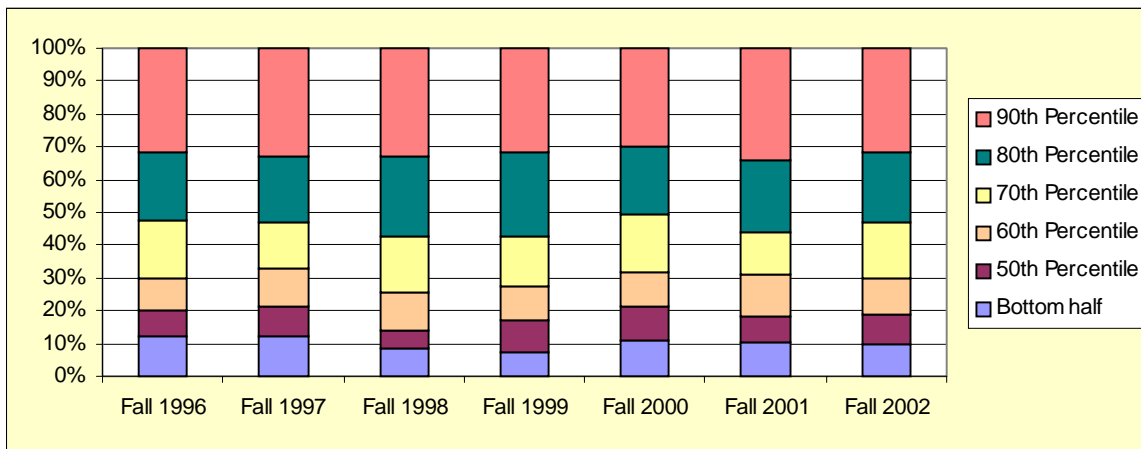
- 1998-99 Celebrated author and observer of the national scene with more than 30 years in print and broadcast journalism, Bill Moyers delivers the 1998 James A. Stewart Lecture, addressing the topic “Ethics for a New Millennium.” Six task forces are established within the university's newly formed Values Council as a means to develop strategic plans for implementing Stetson’s commitment to its core values. The council's activities and plans underscore the university’s mission to be an inclusive community, recognizing the dignity, worth and equality of all people. The Stetson College of Law opens a \$8.5 million Law Library and Legal Information Center that is one of the most technologically-advanced facilities of its kind in the Southeast, housing a 370,000-volume library collection and hundreds of network connections to access online legal resources.
- 1999 The opening of Melching Field at Conrad Park – a \$4.5 million state-of-the-art baseball stadium funded through a collaboration with Stetson, the City of DeLand and the DeLand Sports Redevelopment Association. Final phase of the \$200 Million Campaign, the largest fund-raising effort in Stetson’s history, begins during Stetson Weekend. The \$5.3 million expansion and renovation of the duPont-Ball Library is completed and dedicated. First annual Undergraduate Scholarship and Performance Day showcases students’ academic achievements in a campus-wide celebration open to the public.
- 2000 Author of the bestseller, *Reason for Hope: A Spiritual Journey*, and world-renowned primatologist Jane Goodall delivers the James A. Stewart Lecture. Christine Lynn of Boca Raton donates \$10 million for extensive renovations to the Eugene M. and Christine Lynn Business Center, which houses the School of Business Administration. Construction begins on the permanent home for the Stetson University Center at Celebration. Stetson acquires \$2.6 million Oscar Bluemner art collection.
- 2001 The \$200 Million Campaign concludes with a victory celebration during Stetson Weekend in January. The original goal of \$200 million was surpassed, with the campaign raising \$235,584,479. Stetson’s third campus, the \$7.2 million Stetson University Center at Celebration, opens its doors to students for the fall semester. Construction of the first phase of a \$2 million Amelia Avenue safety and beautification streetscape project is complete -- adding gates, brick pavers and landscaping to the roadway that borders the university.
- 2002 Historic Holler Fountain is brought back to life and beautifies the DeLand campus again with light and spray displays. The Roland George Investments Program team defends its national title at the student portfolio management competition. Stetson breaks ground for a women’s fastpitch softball complex. A \$12 million renovation of the Lynn Business Center is complete and the facility opens in the fall -- featuring technology-advanced classrooms and labs in a state-of-the-art facility. The Stetson College of Law opens a new student life center that houses offices for career services, student life and student organizations, as well as a lounge, fitness center and swimming pool. The law school also launches a part-time law program and breaks ground for a law center and campus in Tampa.

KEY INDICATORS

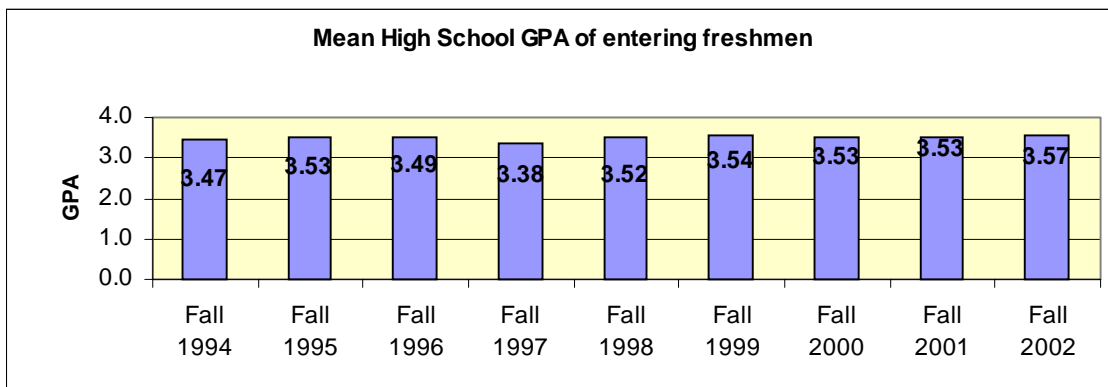
Two predictors of persistence and success in college are class rank and high school GPA. Stetson has consistently recruited high academic achievers, with approximately 30% of Stetson's incoming freshman graduating in the top 10% of their high school class.

High School Class Rank of New Freshmen

	Fall 1996	Fall 1997	Fall 1998	Fall 1999	Fall 2000	Fall 2001	Fall 2002
90th Percentile	31.5%	33.0%	33.1%	31.7%	29.9%	34.1%	31.7%
80th Percentile	52.4%	53.0%	57.1%	57.2%	50.6%	56.4%	53.2%
70th Percentile	70.1%	67.0%	74.2%	72.4%	68.2%	68.6%	70.0%
60th Percentile	79.9%	78.6%	86.2%	83.1%	78.4%	81.9%	80.8%
50th Percentile	88.0%	88.0%	91.6%	92.5%	89.1%	89.7%	90.2%
Bottom half	12.0%	12.0%	8.4%	7.5%	10.9%	10.3%	9.8%



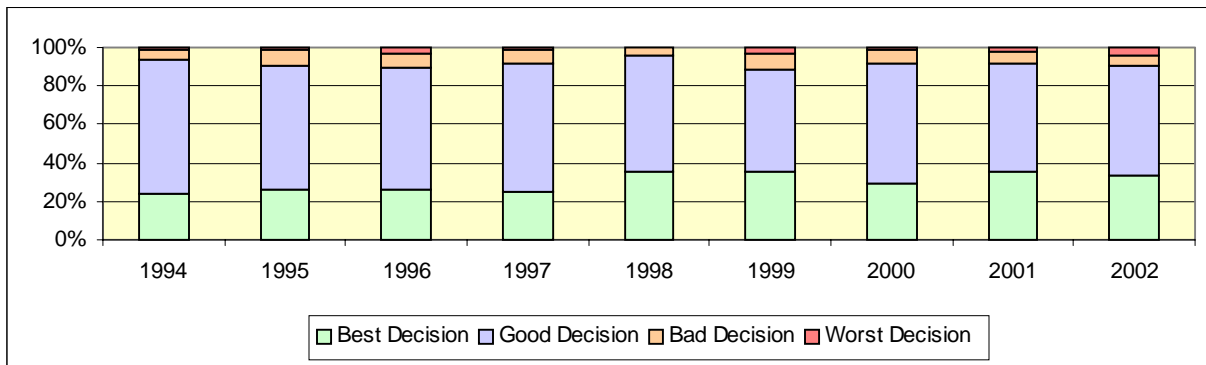
Mean High School GPA



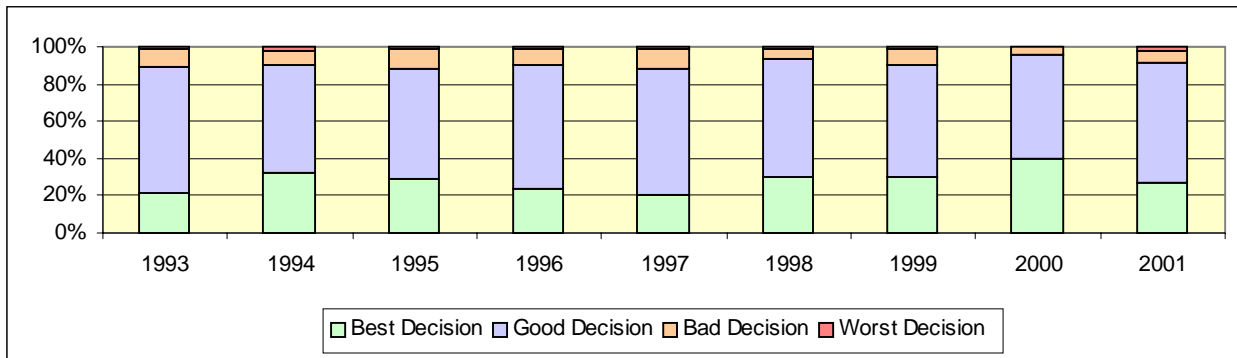
Decision to Attend Stetson

The Institutional Research Office surveys Stetson students at various points in their educational careers. The basic cycle of student surveys includes: 1) Admitted Student Survey (of attenders and non-attenders); 2) Student Satisfaction Survey of a random sample of Freshmen, Sophomore, and Juniors conducted each Spring; 3) Senior Survey of graduating students each Spring; and 4) bi-annual Alumni Survey of students who graduated five years prior to survey. From satisfaction with campus facilities to perspectives on university policies, these surveys examine a wide variety of issues. The graphs below present longitudinal results of the survey item, **“Thinking back on your decision to attend Stetson, how would you describe that decision now?”**

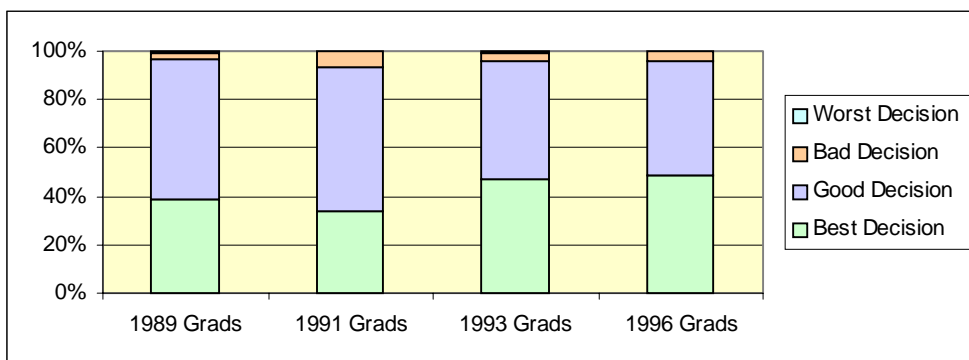
Student Satisfaction Survey



Senior Survey



Alumni Survey

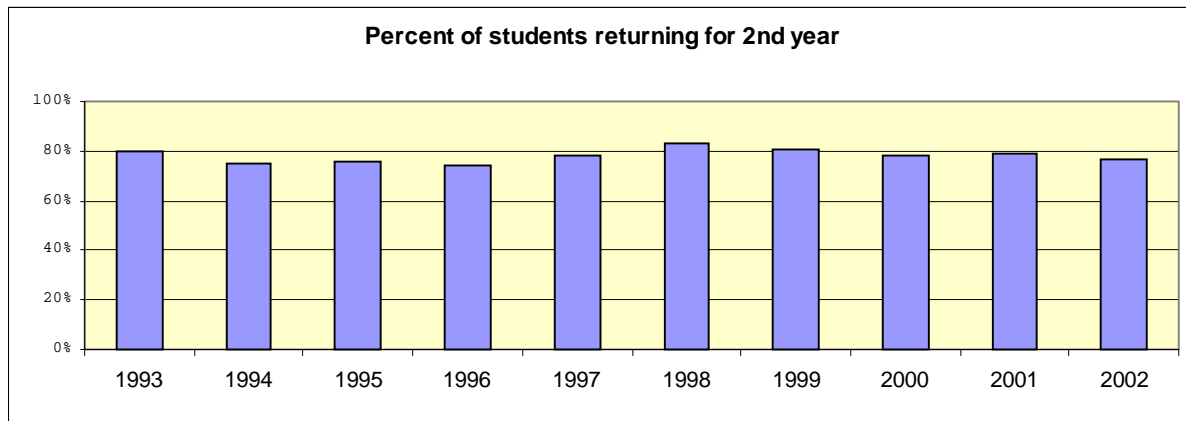


Student Retention Analysis

In the Fall of 2001, Stetson enrolled 532* new, first-time-in-college students and 128 new transfer students. Seventy-seven percent of the new, first-time-in-college students re-enrolled for classes in the Fall of 2002 and 76% of the transfer students re-enrolled. The tables and graphs on this page describe longitudinal retention rates and characteristics of returners & non-returners.

Percent of New (first-time-in-college) Students Returning for Second Year

1993	1994	1995	1996	1997	1998	1999	2000	2001	2002
80%	75%	76%	74%	78%	83%	81%	78%	79%	77%



Characteristics of Returning Students

		% of New Freshman Fall '01 Returning in Fall 2002			% of New Transfers Fall '01 Returning in Fall 2002		
		Initial cohort	# returning	%	Initial cohort	# returning	%
TOTAL		532	412	77.4%	128	97	75.8%
Gender	Female	301	229	76.1%	76	57	75.0%
	Male	231	183	79.2%	52	40	76.9%
Race	International	17	13	76.5%	9	7	77.8%
	African American	21	13	61.9%	4	4	100%
	Latino/a	37	26	70.3%	9	3	33.3%
	Asian American	8	6	75.0%	2	2	100%
	Native American	5	3	60.0%	0	0	
	White	425	336	79.1%	101	79	78.2%
	Unknown, Other	19	15	78.9%	3	2	66.7%
School	Arts & Sciences	325	248	76.3%	82	63	76.8%
	Business	149	119	79.9%	35	25	71.4%
	Music	58	45	77.6%	11	9	81.8%

Cumulative GPA (end of Spring 2002) of Fall 2001 new students

	Returners			Non-Returners		
	Mean	Median	Std. Dev.	Mean	Median	Std. Dev.
New Freshman	2.88	2.93	.6719	2.18	2.28	.9447
New Transfers	2.94	3.00	.6348	2.08	2.41	1.11

Average SAT of Fall 2001 new students

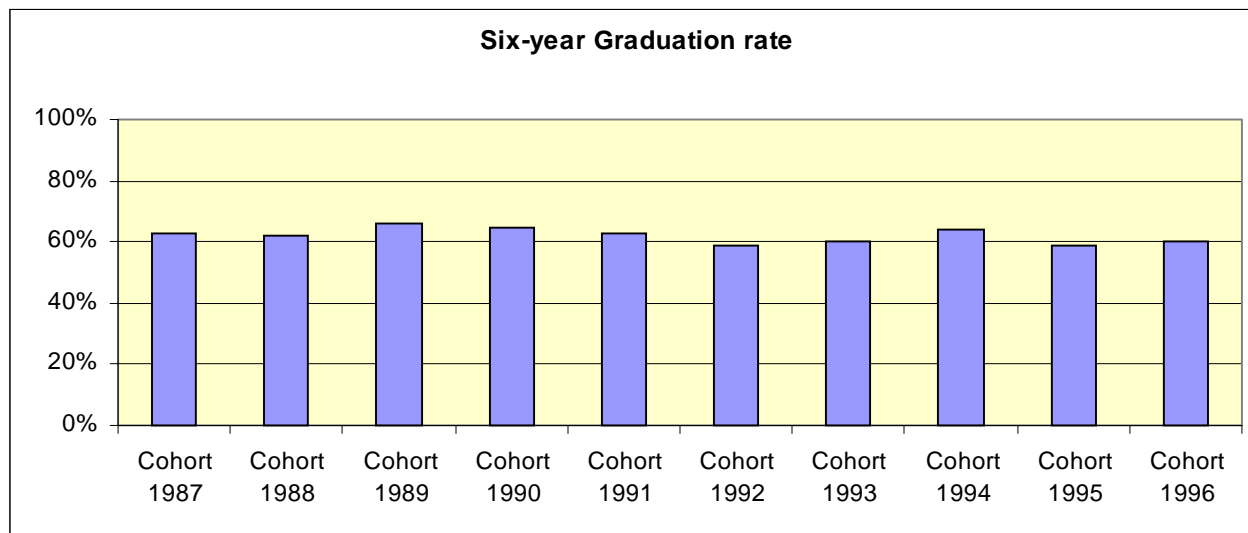
	Returners			Non-Returners		
	Mean	Median	Std. Dev.	Mean	Median	Std. Dev.
New Freshman	1132	1120	141.24	1080	1070	137.35
New Transfers	1032	1090	155.08	998	980	161.07

Average HS GPA of Fall 2001 new students

	Returners			Non-Returners		
	Mean	Median	Std. Dev.	Mean	Median	Std. Dev.
New Freshman	3.68	3.69	.6409	3.49	3.50	.6304
New Transfers	3.34	3.37	.5931	3.40	3.62	.6107

Graduation Rates

	New Freshmen	4-year	5-year	6-year
Cohort: 1987	493	51%	61%	63%
Cohort: 1988	548	47%	59%	62%
Cohort: 1989	492	53%	64%	66%
Cohort: 1990	408	55%	64%	65%
Cohort: 1991	460	52%	62%	63%
Cohort: 1992	501	46%	57%	59%
Cohort: 1993	483	49%	58%	60%
Cohort: 1994	474	54%	62%	64%
Cohort: 1995	464	49%	57%	59%
Cohort: 1996	416	51%	60%	60%



Senior Survey Statistics - Postgraduate Plans

The following statistics are from the HEDS Spring 2001 Senior Survey of 341 May 2001 graduates; 179 surveys were returned for a response rate of 52%.

Primary Activity After Graduation

	Percent
Employment Full-Time	60.2%
Employment Part-Time	.6%
Grad School Full-Time	26.5%
Grad School Part-Time	2.4%
Additional Undergrad Coursework	2.4%
Volunteer Activity	1.2%
Traveling	1.2%
Undecided	3.6%
Other Activity	1.8%

Degree Desired

	Fall 2001 plans	Future plans*
Master's A & S – M.A./M.S.	22.4%	31.9%
Master's Business – M.B.A.	27.6%	29.3%
Other Professional Master's Degree	3.4%	8.6%
Law Degree	19.0%	12.9%
Medical Degree	3.4%	3.4%
Ph.D.	12.1%	23.3%
Other Doctoral	5.2%	4.3%
Other Degree	6.9%	14.7%

*Multiple Responses Allowed

Subject Area of Planned Degree

	Fall 2001	Future		Fall 2000	Future
Business	36.1%	29.4%	Social Work	1.6%	4.9%
Law	18.0%	12.7%	Sociology	1.6%	2.0%
Psychology	13.1%	10.8%	English	1.6%	5.9%
Medicine	4.9%	4.9%	Political Science/Govt.	1.6%	4.9%
Physics	4.9%	1.0%	Health Related Field		3.9%
Fine/Performing Arts	1.6%	6.9%	Theology		3.9%
Mathematics	4.9%	1.0%	Foreign Languages		3.9%
Education	1.6%	9.8%	Economics		2.0%
Chemistry	3.3%	1.0%	History		2.0%
Biological/Life Sciences	1.6%	6.9%	Earth Science		1.0%
Communications, Media	1.6%	4.9%	Humanities		1.0%
Engineering	1.6%				

Long Term Career Plans

Business Owner, Proprietor, Entrepreneur	11.0%	Management	3.1%
Other	11.0%	Medicine, Health Care, Other	3.1%
College/Univ Teaching or Research	9.8%	Government, Politics, Public Policy	3.1%
Law	9.2%	Computer Prog, Science, Tech	2.5%
Undecided	6.1%	Foreign Serv, Diplomacy, Intl Rel	2.5%
Education, Teaching/Admin	4.9%	Finance	2.5%
Marketing, Sales	4.3%	Sports, Recreation	1.8%
Arts/Entertainment	4.3%	Religious Ministry or Service	1.8%
Accounting	3.7%	Physical Sciences	1.8%
Social Science or Services	3.1%	Envir. Science, Natural Resources	1.2%
Medical Doctor	3.1%	Homemaker	1.2%
Advertising, Public Relations	3.1%	Mathematics, Statistics	1.2%
		Broadcasting, Media Productions	.6%

Results from Alumni/ae Surveys

The HEDS *Alumni/ae Survey* conducted by the Institutional Research Office approximately every two years offers insights into a variety of issues, including the outcomes of our general education program. The following tables presents results from three cohorts of Stetson graduates (1991, 1993 and 1996) as well as graduates from peer institutions. The abilities/types of knowledge (e.g., write effectively, communicate well orally, etc.) are examined from two perspectives: 1) How important are the abilities/type of knowledge in current personal and professional activities?, and 2) How did the undergraduate experience enhance the abilities/type of knowledge?

<i>Abilities/type of knowledge developed in Bachelor Program</i>	Greatly Important in current personal and professional activities					
	Stetson Grads			Peer Grads.		
	1991	1993	1996	1991	1993	1996
Acquire new skills / knowledge on my own	71%	74%	85%	72%	72%	83%
Think analytically and logically	76%	73%	81%	73%	75%	84%
Formulate creative/original ideas & solutions	64%	61%	64%	66%	62%	65%
Academic ability			44%			44%
Write effectively	75%	67%	61%	68%	72%	65%
Use quantitative tools (e.g., statistics, graphs)	20%	21%	38%	19%	25%	40%
Appreciate Arts			24%			27%
Gain knowledge in a field			64%			62%
Speak/read foreign language			11%			12%
Develop social awareness			37%			43%
Place problems in perspective			49%			52%
Identify/understand moral and ethical issues	34%	32%	54%	31%	32%	56%
Self-understanding			64%			63%
Function independently			95%			90%
Develop self-esteem			65%			65%
Establish course of action			86%			83%
Intellectual self-confidence			79%			75%
Desire for continued learning			71%			71%
Lead & supervise tasks & groups of people	60%	51%	68%	51%	50%	63%
Relate well to people of different races, nations, & religions	56%	58%	70%	55%	54%	66%
Function effectively as a team member	65%	66%	84%	62%	64%	77%
Communicate well orally	84%	84%	89%	81%	84%	84%
Understand others			75%			80%
Understand scientific process			18%			28%
Use computers, technology	64%	69%	66%	58%	63%	56%

<i>Abilities/type of knowledge developed in Bachelor Program</i>	Enhanced Greatly in current personal and professional activities					
	Stetson Grads			Peer Grads.		
	1991	1993	1996	1991	1993	1996
Acquire new skills / knowledge on my own	41%	46%	57%	50%	46%	61%
Think analytically and logically	48%	47%	44%	55%	52%	60%
Formulate creative/original ideas & solutions	33%	36%	34%	40%	32%	42%
Academic ability			56%			55%
Write effectively	44%	49%	50%	57%	57%	59%
Use quantitative tools (e.g., statistics, graphs)	20%	21%	30%	15%	18%	27%
Appreciate arts			29%			41%
Gain knowledge of a field			41%			38%
Read/speak a foreign language			11%			15%
Develop social awareness			21%			35%
Place problems in perspective			21%			29%
Identify/understand moral and ethical issues	22%	17%	26%	31%	21%	39%
Self-understanding			36%			41%
Function independently			48%			50%
Develop self-esteem			33%			36%
Establish course of action			46%			43%
Intellectual self-confidence			47%			47%
Desire for continued learning			54%			59%
Lead & supervise tasks & groups of people	32%	33%	31%	25%	26%	24%
Relate well to others	22%	27%	28%	36%	20%	27%
Function effectively as a team member	42%	39%	52%	32%	36%	35%
Communicate well orally	40%	55%	47%	41%	47%	38%
Understand others			30%			36%
Under scientific process			26%			27%
Use computers, technology	28%	25%	35%	22%	20%	19%

1991 peer group contains results from Hamline, Oberlin, and U of Puget Sound. 1993 peer group contains results from Rollins College, U of Puget Sound, Wake Forest, and Hamline. 1996 peer group contains results from U of Richmond, St. Lawrence, U of Puget Sound, and Centre.

Source: HEDS Alumni/ae Surveys conducted in 1996, 1998 and 2002

Tuition and Fees

Stetson - Historical

Year	Undergraduate			Per Credit Hour Fees	
	Tuition	Fees	Total	U-Grad	Graduate
1991 - 1992	\$9,610	\$410	\$10,020	\$320	\$215
1992 - 1993	\$10,660	\$450	\$11,110	\$355	\$235
1993 - 1994	\$11,510	\$485	\$11,995	\$385	\$255
1994 - 1995	\$12,315	\$555	\$12,870	\$410	\$275
1995 - 1996	\$13,110	\$590	\$13,700	\$440	\$295
1996 - 1997	\$14,100	\$635	\$14,735	\$470	\$315
1997 - 1998	\$15,100	\$665	\$15,765	\$500	\$350
1998 - 1999	\$15,850	\$800	\$16,650	\$525	\$370
1999 - 2000	\$16,640	\$870	\$17,510	\$550	\$390
2000 - 2001	\$17,475	\$910	\$18,385	\$580	\$410
2001 - 2002	\$18,350	\$960	\$19,310	\$610	\$430
*2002 - 2003	\$19,450	\$1025	\$20,475	\$650	\$430
**2002 - 2003	\$19,950	\$1275	\$21,225	\$650	\$430

*Continuing Students

**New Students

2002 - 03 Reference Schools Comparison - Tuition and Fees

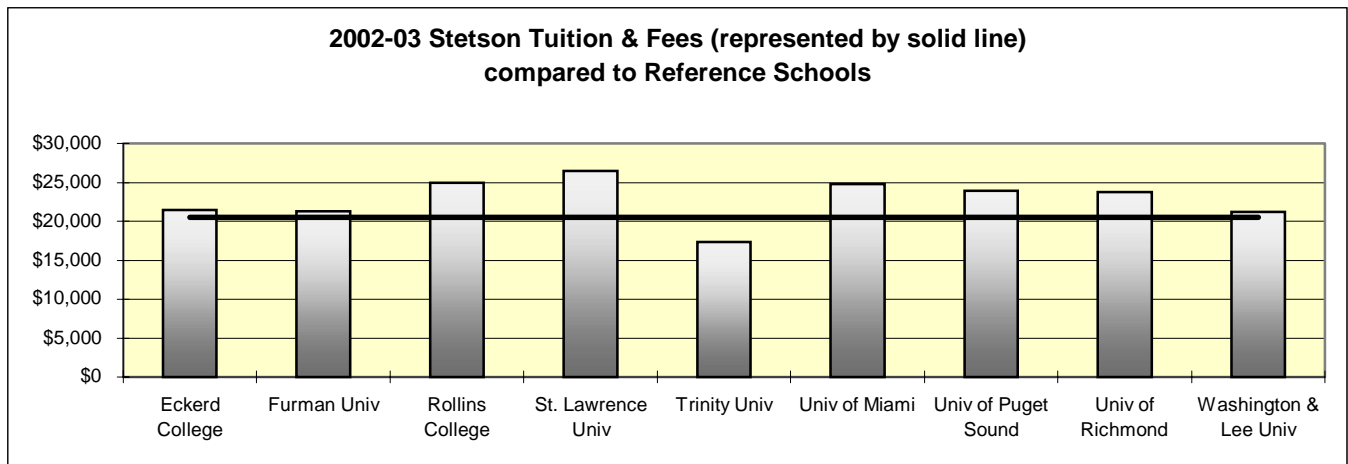
Furman Univ	21,264	Trinity Univ	17,364
Rollins College	24,958	Univ of Puget Sound	23,945
St. Lawrence Univ	26,480	Univ of Richmond	23,730
Stetson	20,475	Washington & Lee Univ	21,175

Other

Univ of Miami

Eckerd College

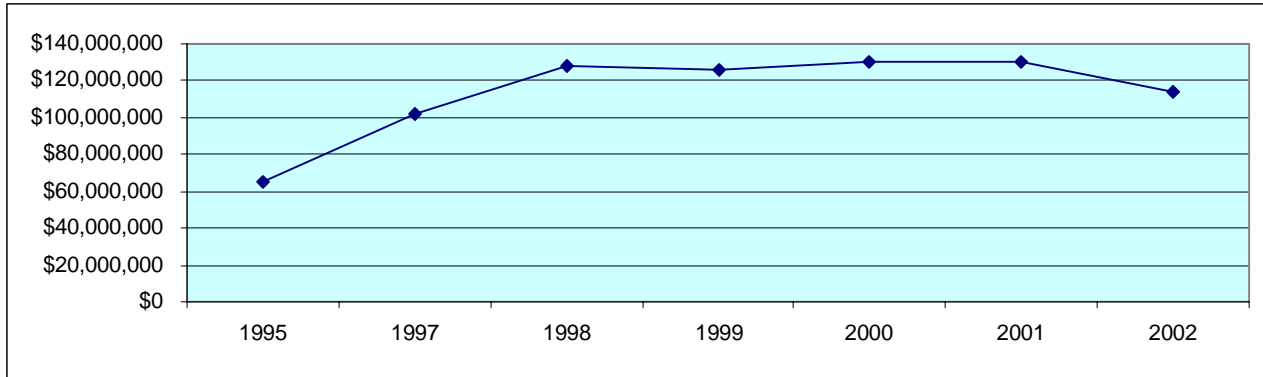
Source: U.S. News & World Report



Financial Information

Endowment - Market Value

5/31/96	5/31/97	5/31/98	12/31/99	5/31/00	5/31/01	5/31/02
\$76,820,000	\$102,012,000	\$127,858,000	\$125,930,588	\$130,066,800	\$130,407,000	\$113,679,000



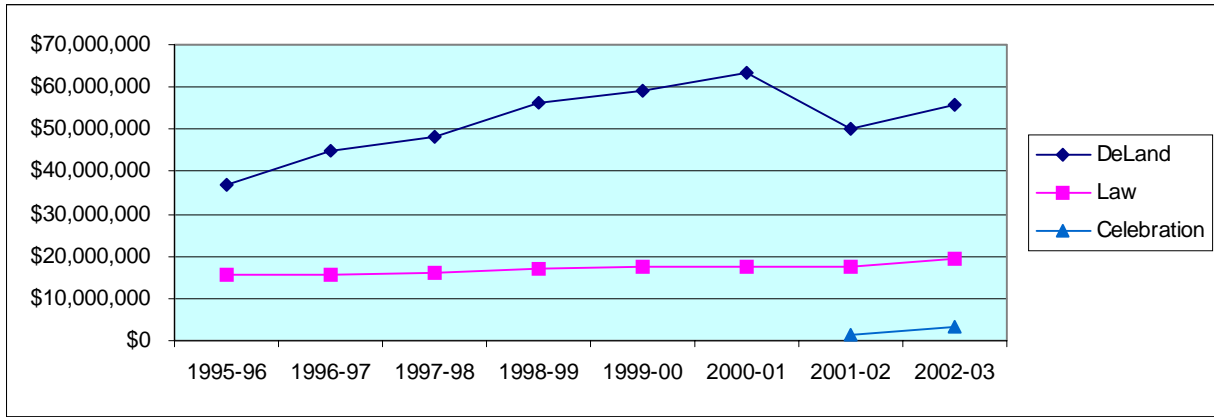
Endowment - Reference Schools

School	Market Value End FY02	National Rank in Endowment Assets
University of Richmond	\$998,201,000	40th
Trinity University	\$599,347,000	73rd
Washington & Lee University	\$435,561,000	95th
Furman University	\$229,999,000	164th
St. Lawrence University	\$173,999,000	194th
University of Puget Sound	\$168,702,000	199th
Rollins College	\$124,864,000	258th
Stetson	\$113,679,000	274th

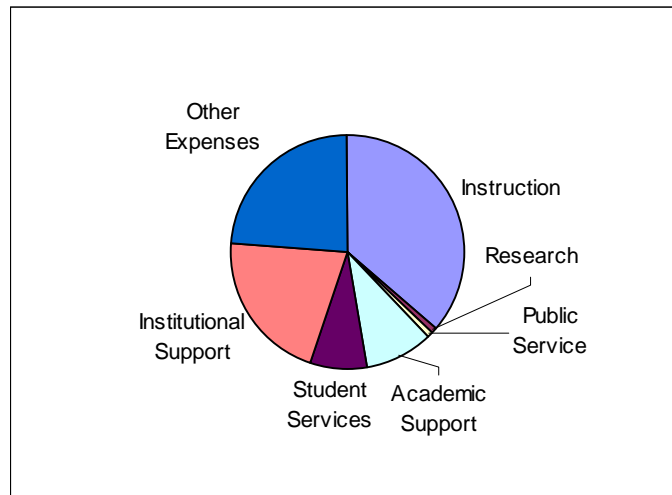
Source: 2002 NACUBO Endowment Study

Annual Budget

	1997-98	1998-99	1999-00	2000-01	2001-02	2002-03
DeLand	\$48,200,000	\$56,200,000	\$59,073,000	\$63,377,000	\$49,944,000	\$55,670,000
Law	\$16,000,000	\$17,000,000	\$17,616,000	\$17,285,000	\$17,285,000	\$19,188,000
Celebration					\$1,524,000	\$3,118,000



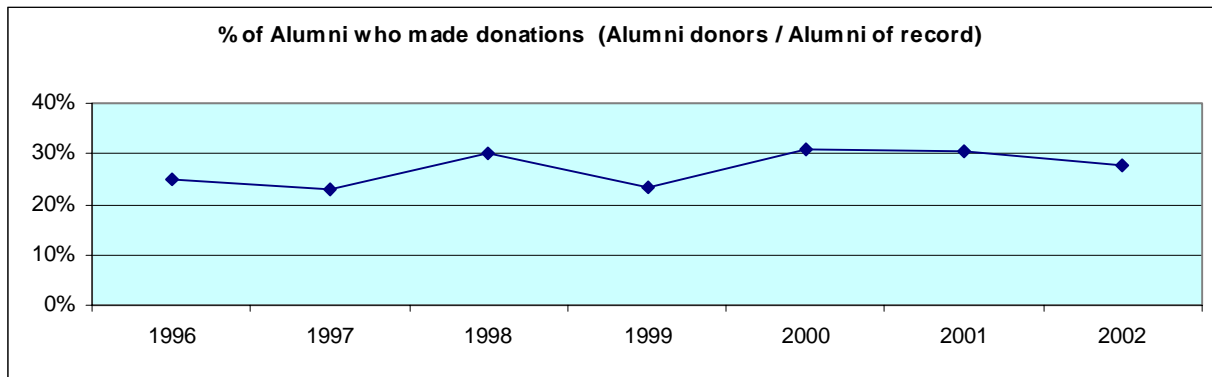
Expenditures – Fiscal Year 2002



Source: IPEDS Finance Survey

Alumni Giving Profile

	1996	1997	1998	1999	2000	2001	2002
Alumni of record	19,312	19,278	18,940	18,240	18,724	14,911	14,718
Alumni solicited	10,872	11,098	14,526	16,040	14,358	10,255	10,116
Alumni donors	4,807	4,402	5,723	4,273	5,759	4,534	4,069
Giving percent of record	24.89%	22.83%	30.22%	23.43%	30.8%	30.4%	27.6%



Student Financial Aid

Scholarships/Grants (2002-2003)

	Need-Based	Non-Need-Based
Federal	\$1,610,221	\$ 37,638
State	411,000	6,197,340
Institutional*	8,496,658	5,497,890
External		838,851
TOTAL	\$10,517,879	\$12,571,719

*excludes athletic aid and tuition waivers

	New Full-time Freshman	Full-time Undergrads
Average need-based gift award*	\$ 15,564	\$ 13,548
Average financial aid package*	\$ 19,311	\$ 18,791
Students receiving non-need based gift aid**	178	666
Average non-need based gift award**	\$ 11,641	\$ 10,848

*Full-time degree-seeking students who applied for aid and were determined to have need

**Students had no financial need

ACADEMIC PROGRAMS

Degrees and Programs Offered (2002-03)

College of Arts and Sciences

American Studies	B.A.	Latin American Studies	B.A.
Aquatic & Marine Biology*	B.S.	Mathematics	B.A., B.S.
Art	B.A.	Modern Languages	
Biology	B.A., B.S.	French	B.A.
Biochemistry*	B.S.	German	B.A.
Chemistry	B.S.	Spanish	B.A.
Communication Studies	B.A.	Molecular Biology*	B.S.
Computer Science	B.S.	Music	B.A.
Digital Arts	B.A.	Philosophy	B.A.
Economics	B.A., B.S.	Physics	B.S.
Elementary Education*	B.A., B.S.	Political Science	B.A., B.S.
English	B.A.	Psychology	B.A., B.S.
Environmental Science	B.A., B.S.	Religious Studies	B.A.
Geography	B.A., B.S.	Russian Studies	B.A.
History	B.A.	Secondary Education*	B.A., B.S.
Humanities	B.A.	Social Science*	B.A.
Integrative Health Sciences		Social Science - Education*	B.A.
Athletic Training	B.S.	Sociology	B.A., B.S.
Health Science	B.S.	Sport Management	B.A.
Rehabilitative Studies	B.S.	Theatre Arts	B.A.
International Studies	B.A.		

* Minor NOT available

Minors only

Africana Studies	Art History & Studio Art	Russian
Anthropology	Health Care Issues	Women and Gender Studies
Applied Ethics	Journalism	

Cooperative Programs

Engineering	Pre-Med	Forestry and Environmental Studies
Medical Technology	Pre-Law	

School of Business Administration

Accounting (Public & Private)	B.B.A.	General Business Administration	B.B.A.
Economics*	B.B.A.	International Business*	B.B.A.
Electronic Business Technology	B.B.A.	Management	B.B.A.
Finance	B.B.A.	Marketing	B.B.A.

* Minor NOT available

Minors only

Applied Statistics	Business Law	Family Business
--------------------	--------------	-----------------

School of Music

B.A. Music
B.A. Digital Arts - Music Track

B.M.E. Instrumental/General
B.M.E. Vocal/General

B.M. Performance
Piano/Organ
Voice
Guitar
Orchestral Instrument

B.M. Theory and Composition
B.M. Elective Studies in a Specific Outside Field
Digital Arts
Business
Other

Minors

General Music

Church Music (must be attached to a music degree)

Graduate

Mental Health Counseling
Marital, Couple, & Family
Counseling/Therapy
School Counseling
Education
Reading Education
Exceptional Student Education/
Varying Exceptionalities

M.S.	Career Teacher	Ed.S.
	English	M.A.
M.S.	Educational Leadership	M.Ed., Ed.S.
M.S.		M.B.A./M.Ed.
M.A.		M.B.A./Ed.S.
M.Ed.	Career Teacher	Ed.S.
	Accounting	M.Acc.
M.Ed.	General Business Administration	M.B.A.

Enrollment by Major - Undergraduate (Fall 2002)

Includes Double Majors

College of Arts and Sciences

Major	Frequency	% of A&S Majors	Major	Frequency	% of A&S Majors
American Studies	5	0.4%	German	5	0.4%
Aquatic & Marine Biology	13	1.1%	Health Science	39	3.4%
Art	32	2.8%	History	34	2.9%
Athletic Training	5	0.4%	Humanities	10	0.9%
Biochemistry	20	1.7%	International Studies	18	1.6%
Biology	95	8.2%	Latin American Studies	3	0.3%
Biology-Sec. Education Certif.	3	0.3%	Math.-Sec. Education Certif.	8	0.7%
Biomedical Science-Honors	1	0.1%	Mathematics	10	0.9%
Chemistry	14	1.2%	Med Tech	1	0.1%
Communication Studies	69	6.0%	Molecular Biology	4	0.3%
Comp.Science-Applied Track	2	0.2%	Music	3	0.3%
Computer Information Systems	4	0.3%	Philosophy	11	0.9%
Computer Science	24	2.1%	Physics	16	1.4%
Creative Arts-Honors	3	0.3%	Political Science	108	9.3%
Digital Arts-Art Track	46	4.0%	Premedicine-Honors	1	0.1%
Digital Arts-Computer Science	11	0.9%	Psychology	146	12.6%
Digital Arts-Music Track	6	0.5%	Rehabilitative Studies	18	1.6%
Economics	10	0.9%	Religious Studies	29	2.5%
Elementary Education	89	7.7%	Russian Studies	16	1.4%
English	67	5.8%	Social Science	2	0.2%
English-Sec. Education Certif.	9	0.8%	Social Science-Sec. Ed. Certif	9	0.8%
Environmental Science	21	1.8%	Sociology	37	3.2%
Exercise Science	7	0.6%	Spanish	17	1.5%
French	6	0.5%	Sport Administration	19	1.6%
Gen Studies in Ed	1	0.1%	Sport Management	16	1.4%
Geography	2	0.2%	Theatre Arts	14	1.2%
Total A&S Majors			1159	100.0%	

School of Business

Major	Frequency	% of Bus. Majors
Accounting	55	7.8%
Computer Information Systems	17	2.4%
E-Business Technology	40	5.7%
Economics	14	2.0%
Finance	102	14.5%
General Business Admin.	209	29.6%
International Business	77	10.9%
Management	72	10.2%
Marketing	119	16.9%
Total Business Majors	705	100.0%

Discovery (Undeclared)	193
------------------------	-----

School of Music

Major	Frequency	% of Mus. Majors
B.M. Outside Field	20	10.3%
B.M. Outside Field-Business	13	6.7%
B.M. Outside Field-Digital Art	5	2.6%
Guitar	8	4.1%
Music Ed-Instrumental/Gen.	53	27.3%
Music Education-Vocal	16	8.2%
Orchestral Instrument	21	10.8%
Piano/Organ	9	4.6%
Theory & Comp:Theory	5	2.6%
Theory & Comp-Comp.	8	4.1%
Vocal/General	2	1.0%
Voice	34	17.5%
Total Music Majors	194	100.0%

Enrollment by Minor - Undergraduate (Fall 2002)

Includes Double Minors

	School of Student's Major				School of Student's Major		
	A & S	Business	Music		A & S	Business	Music
Accounting Minor	2	8	0	Health Science	1	1	0
Africana Studies	4	0	0	History	7	1	0
American Studies	1	0	0	Humanities	5	0	0
Anthropology	4	0	0	Information Technology	7	41	0
Applied Ethics Minor	1	1	0	International Studies	2	1	0
Applied Statistics	1	7	0	Journalism	33	2	1
Art	15	4	0	Latin American Studies	2	1	0
Art History	8	0	0	Management	2	15	0
Biology	7	1	1	Marketing	11	16	0
Business Law	13	37	0	Mathematics	12	3	0
Chemistry	5	0	0	Music Minor	52	11	3
Communication Studies	9	14	1	Philosophy	5	0	0
Computer Science	2	3	0	Physics	0	0	1
Digital Arts	8	1	0	Political Science	17	9	0
E-Business Technology	7	54	0	Psychology	42	11	2
Economics	1	3	0	Religious Studies	19	3	1
Education	11	2	0	Russian	4	0	0
English	6	2	5	Russian Studies	4	0	0
Environmental Science	4	0	0	Sociology	21	6	0
Exercise Science	1	0	0	Spanish	34	19	0
Family Business	3	5	0	Sport Administration	1	4	0
Finance	4	7	0	Sport Management	2	1	0
French	16	11	1	Theatre Arts	10	0	1
General Business Admin.	21	5	1	Varying Exceptionalities	3	0	0
Geography	1	0	0	Women & Gender Studies	12	0	0
German	3	0	0	TOTALS	477	312	18
Health Care Issues	11	2	0				

Enrollment by Major - Graduate (Fall 2002)

Major	#	%	Major	#	%
General Business Administration	148	40.4%	Counseling – School Guid & Family	48	13.1%
Accounting	7	1.9%	Counseling – Marriage & Family	28	7.7%
Elementary Education	3	08%	Mental Health Counseling	20	5.5%
Education	6	1.6%	English	8	2.2%
Reading Education	6	1.6%	None Declared	33	9.0%
Exceptional Student Education	11	3.0%	Law	1	.3%
Career Teacher	7	1.9%	TOTAL	366	
Educational Leadership	40	10.9%			

Enrollment by Major - Undergraduate (Historical)*

Arts & Sciences	1993	1994	1995	1996	1997	1998	1999	2000	2001	2002
American Studies	9	5	6	10	11	8	4	4	4	5
Aquatic & Marine Biology									6	13
Art	22	12	11	13	17	20	24	33	33	25
Biochemistrv					12	29	28	30	27	19
Biology	153	120	120	112	114	110	111	107	112	95
Chemistrv	31	34	29	30	19	17	15	14	17	14
Communication Studies	31	38	35	40	51	46	53	72	70	66
Computer Info Systems				2	12	10	4	11	39	4
Computer Science	26	23	20	32	35	43	53	45	33	26
Digital Arts				8	26	48	67	75	59	61
Economics	4	4	7	4	5	6	3	3	1	7
Education - Elementary	104	110	100	100	100	90	72	76	75	89
Education - General									10	1
Education - Secondary	25	24	17	16	19	16	17	16	20	29
English	110	123	82	70	62	62	61	69	66	66
Environmental Science				3	18	29	22	19	19	20
Foreign Language - French	15	14	11	9	5	5	2	5	6	5
Foreign Language - German	4	7	4	3			3	3	1	2
Foreign Language - Spanish	11	12	16	9	5	9	9	11	11	6
Foreign Language Combo	8	2	1							
Geography	6	11	11	6	2	1	1	2	2	2
History	50	40	36	35	39	34	26	26	18	30
Honors	1	1		4	1				1	3
Humanities	8	6	5	2	3	6	7	4	8	9
Integ Health - Health Science									15	38
International Studies			1			1	5	5	13	16
Journalism self-defined						1				
Latin American Studies			2	2	1					3
Mathematics	23	17	26	25	19	17	17	12	8	9
Med Tech	3	3	2	2	2	1		1		1
Molecular Biology								3	5	4
Philosophy	5	3	7	1	2	9	10	10	8	8
Physical Education	11						1			
Physics	20	16	23	17	15	13	13	20	17	15
Political Science	107	114	98	89	87	78	71	98	95	103
Psychology	136	149	140	127	121	102	98	126	127	139
Religious Studies	2	5	7	10	13	15	10	11	13	18
Russian Studies	11	8	8	5	5	3	2	2	1	8
SES-Athletic Training	1	6	7	4	8	20	24	22	14	5
SES-Exercise Science	22	56	51	37	46	55	51	45	27	7
SES-Movement Therapy			1	13	12	21	23	13	1	
SES - Rehabilitative Studies								2	9	18
SES-Sport Admin/Mgmt	22	24	27	29	26	32	39	44	40	33
SES-Sport Communications	1	2	6	9	11	7	4	1		
Social Science	7	4	3	3	3	4	2	4	3	2
Sociology	28	31	33	25	21	30	42	42	33	37
Theatre Arts	5	6	10	10	8	9	8	7	10	14
Discovery (Undeclared)	255	221	231	227	229	242	224	192	212	188
Total	1277	1251	1194	1143	1185	1249	1226	1285	1289	1263

Enrollment by Major - Undergraduate (Historical), continued*

Business	1993	1994	1995	1996	1997	1998	1999	2000	2001	2002
Accounting	159	148	127	88	85	80	86	80	60	55
Business Economics	4	7	7	7	4	4	6	5	2	5
Computer Info Systems				1	8	15	34	30		16
Electronic Business Tech									12	38
Finance	86	77	76	77	80	61	73	83	93	94
General Business Admin	219	223	202	200	200	212	220	238	232	209
International Business					18	42	56	75	81	75
Management	62	70	83	82	68	63	77	70	73	72
Marketing	67	65	74	83	76	65	89	102	107	114
Undeclared (Business)									2	
Total	597	590	569	538	539	542	641	683	662	678

Music	1993	1994	1995	1996	1997	1998	1999	2000	2001	2002
Bach of Music w/Bus Adm					10	17	10	16	14	13
Bach of Music w/outside Field				4	7	11	15	5	12	20
Bachelor of Music w/Dig Arts					7	7	8	5	8	5
Church Music	3	1	1							
Music Education	84	80	96	75	87	86	81	74	71	69
Music Lib. Arts	5	7	9	9	6	2	3	3	6	3
Musical Theater	4	4	3	2			1			
Performance:										
Guitar	12	11	12	10	13	11	8	10	10	8
Orchestral Instrument	19	23	23	13	20	19	22	14	20	20
Piano	16	13	7	6	2	1				
Piano/Organ				1	6	8	4	6	11	9
Voice	22	16	24	24	19	24	29	38	54	36
Theory & Composition	5	2	9	5	6	5	6	15	11	13
Undeclared (Music)	1	1	3	21	1	5	8	1	6	
Total	171	158	187	170	184	196	195	187	223	196

No major or college										5
---------------------	--	--	--	--	--	--	--	--	--	---

*These statistics do not include double majors

Degrees Awarded by Major - Undergraduate (Historical)

Program	7/1/95 to 6/30/96	7/1/96 to 6/30/97	7/1/97 to 6/30/98	7/1/98 to 6/30/99	7/1/99 to 6/30/00	7/1/00 to 6/30/01	7/1/01 to 6/30/02
American Studies		4	6	2	1	1	1
Art	3	4	3	4	2	5	10
Biology	23	18	27	25	20	23	19
Bio-Chemistry				4	2	4	9
Chemistry	7	3	7	3	6		2
Communications	11	20	16	14	10	19	22
Communications, Other	1		4	2	1	2	
Computer & Info Science	3	5					
Computer Science			3	12	9	7	3
Computer Science, Other (DA)						16	17
Economics	1	2	1	4	1	1	
English	28	23	19	15	11	21	21
Environmental Science / Studies		1	1	5	5	5	7
Foreign Language	1						
Foreign Language: French	7	3	2	3			1
Foreign Language: German		2				1	
Foreign Language: Spanish	7	6	5	1	1	3	7
Geography	8	6	1	2		1	
Health Sciences							2
History	9	13	10	12	10	6	5
Humanities	4	2	2	1	5	3	2
International Studies/Sciences			1			1	1
Latin American Studies			1				
Mathematics	2	5	8	3	3	3	3
Medical Technology					1		
Philosophy	2	3		1	1	1	3
Physics	5	2	3	3	1	5	4
Political Science	27	16	23	22	10	10	18
Physiological PSY, Psy-biology							1
Psychology	44	34	35	28	24	30	27
Religious Studies	4	3	8	3	5	3	4
Russian Studies	2	2	1	1		1	
SES: Athletic Trng, Sports Med	1		2		4	3	6
SES: Ex Sci & Mvmt Therapy			14	15	20	20	15
SES: Sport & Fitness Admin		6	9	6	8	12	12
Social Science Teacher Educ	2	1					
Social Sciences	1	1	4	2	2	3	7
Sociology	19	12	7	9	11	21	11
Teacher Educ - Elem	26	30	23	34	20	16	18
Teacher Educ - English	1	2	4	3	1		
Teaching & Coaching - Phys Ed	28	11					
Theatre Arts		3	1	4	1	2	1
Arts & Sciences Total	277	243	251	243	196	249	259

Business								
Business Administration	39	39	35	38	37	44	30	
Accounting	31	28	19	22	15	20	18	
Business Economics		2			2	1	2	
Business, Other (CIS)				3	5	9	6	
Finance	30	23	31	29	20	24	33	
International Business				3	7	8	14	
Management	31	25	26	16	23	16	24	
Marketing	20	35	32	19	32	40	39	
Business Total	151	152	143	130	141	162	166	

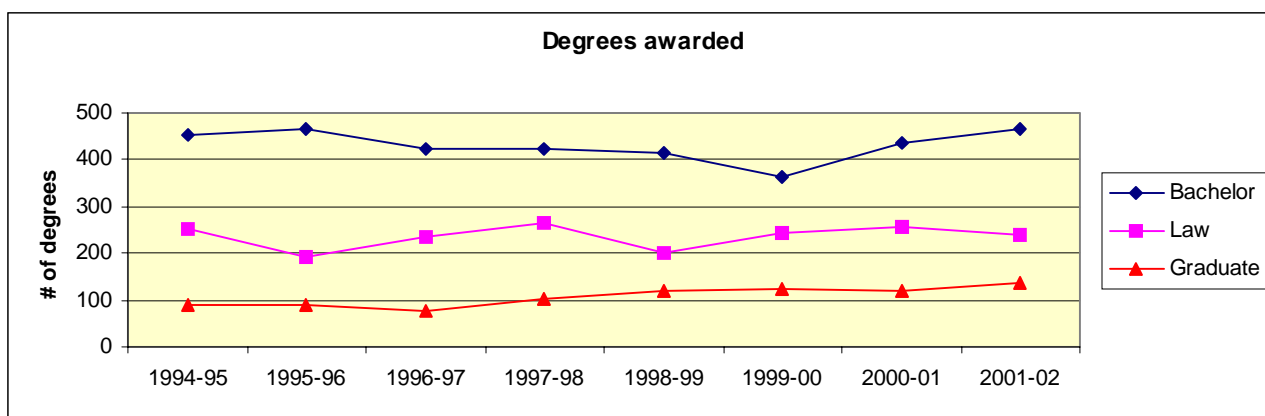
Music							
Music Perf - Piano & Organ	2	6	1	1		1	1
Music Perf - Voice	5	2	5	5	2	7	7
Music - Other	6	11	8	15	6	1	8
Music, General Performance	4		1	2	6	2	11
Music Theory & Composition	2		2	1		2	1
Teacher Educ - Music	17	11	13	19	11	12	12
Music Total	36	30	30	43	25	25	40

UNDERGRADUATE TOTAL	464	425	424	416	362	436	465
----------------------------	------------	------------	------------	------------	------------	------------	------------

Source: IPEDS Completion Reports (classified by CIP codes)

Degrees Awarded - by Degree Type (Historical)

	1994-95	1995-96	1996-97	1997-98	1998-99	1999-00	2000-01	2001-02
Arts & Sciences								
Bachelor	263	277	243	251	243	196	249	259
Graduate	37	47	40	39	23	48	40	42
Business								
Bachelor	157	151	152	143	130	141	162	166
Graduate	40	46	36	63	95	74	79	94
Music	35	36	30	30	43	25	25	40
Law	253	191	235	265	202	243	257	240



College of Law

Law School Tuition (10 credit hours or more)

1995-96	1996-97	1997-98	1998-99	1999-00	2000-01	2001-02	2002-03
\$18,175	\$18,175	\$18,975	\$19,750	\$20,350	\$21,165	\$21,905	\$22,785

Law School Tuition for Summer Session (5 credit hours or more)

1995	1996	1997	1998	1999	2000	2001	2002
\$4,550	\$4,550	\$4,750	\$4,950	\$5,100	\$5,305	\$5,475	\$5,695

Law School Key Facts

- Ranked Number One in trial advocacy by *U.S. News & World Report*
- Outstanding intercollegiate competition opportunities
- Only law school in the nation to win all five national-level law school trial competitions in one academic year
- Centers for Excellence in Advocacy, Dispute Resolution, Elder Law, Health Law, and International Law & Business
- Accomplished faculty who are experts in their fields
- Practice-based clinics and internships
- The first law school in Florida to establish a clinical program
- Concentration programs in Advocacy, Elder Law, Health Law and International Law
- Honors program for top students
- Part-time J.D. program beginning Fall 2002
- Joint J.D./M.B.A. program
- LL.M. in International Law and Business
- Small classes and individual attention to student needs
- A solid, skill-based curriculum
- Excellent job placement services
- Summer programs in Estonia and Spain
- The first law school in Florida and one of the first law schools in the nation to require pro bono service by students and faculty
- Vibrant student life with a diversity of student organizations, interscholastic activities and competitions
- State-of-the-art Law Library and Legal Information Center
- Superb facilities, with advanced computer and Internet technology
- International, national and regional continuing legal education (CLE) programs
- Beautiful Tampa Bay location

For more information on the College of Law, visit www.law.stetson.edu.

STUDENT INFORMATION

Admissions

High School Class Rank - New Freshman

	Fall 1999	Fall 2000	Fall 2001	Fall 2002
Top 10% of high school graduating class	31.7%	29.9%	34.1%	31.7%
Top 20% of high school graduating class	57.2%	50.6%	56.4%	53.2%
Top 25% of high school graduating class	65.1%	59.4%	62.7%	61.2%
Top 50% of high school graduating class	92.5%	89.1%	89.7%	80.2%

1998 - 83% of new freshmen submitted class rank
 1999 - 85% of new freshmen submitted class rank
 2000 - 81% of new freshmen submitted class rank
 2001 - 77% of new freshmen submitted class rank
 2002 - 77% of new freshmen submitted class rank

SAT / ACT Scores

Fall 2002 New Freshmen

	75th Percentile	25th Percentile	Average
SAT - Math	610	500	558
SAT - Verbal	620	510	566
SAT - Total	1210	1030	1123

ACT Math	26	20	24
ACT English	27	21	24
ACT Composite	27	21	24

High School GPA	4.00	3.29	3.57
-----------------	------	------	------

94% of new freshman submitted SAT scores (n = 509)
 44% of new freshman submitted ACT scores (n = 239)
 96% of new freshman submitted High School GPA (n = 524)

Range of SAT / ACT Scores

Fall 2002 New Freshmen

SAT	Verbal	Math
700 - 800	6.1%	4.7%
600 - 699	28.7%	25.9%
500 - 599	44.4%	49.7%
400 - 499	20.4%	19.3%
300 - 399	.4%	.4%

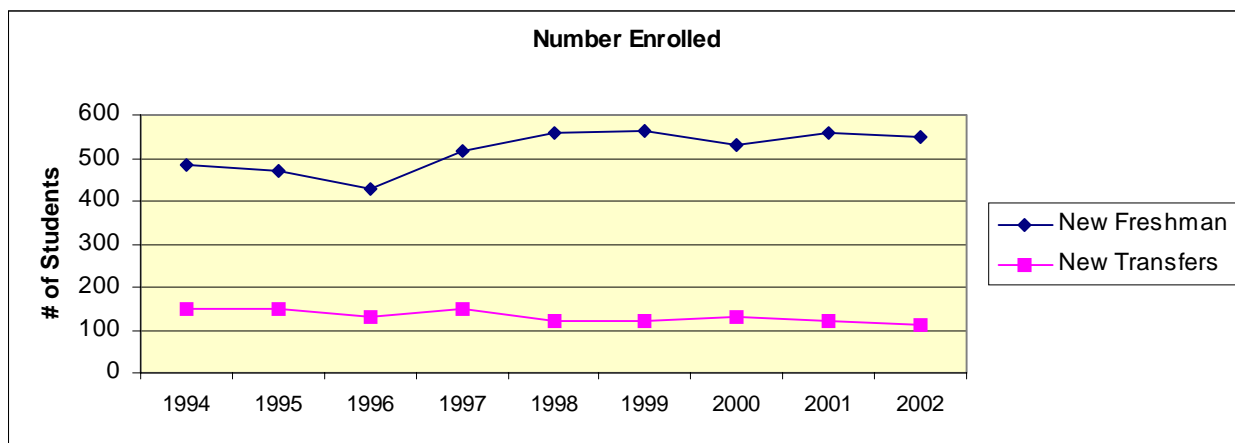
ACT	Composite	English	Math
30 - 36	6.3%	12.9%	5.4%
24 - 29	47.7%	38.2%	46.5%
18 - 23	43.9%	44.0%	41.5%
12 - 17	2.1%	4.6%	6.6%
6 - 11	--	.4%	--

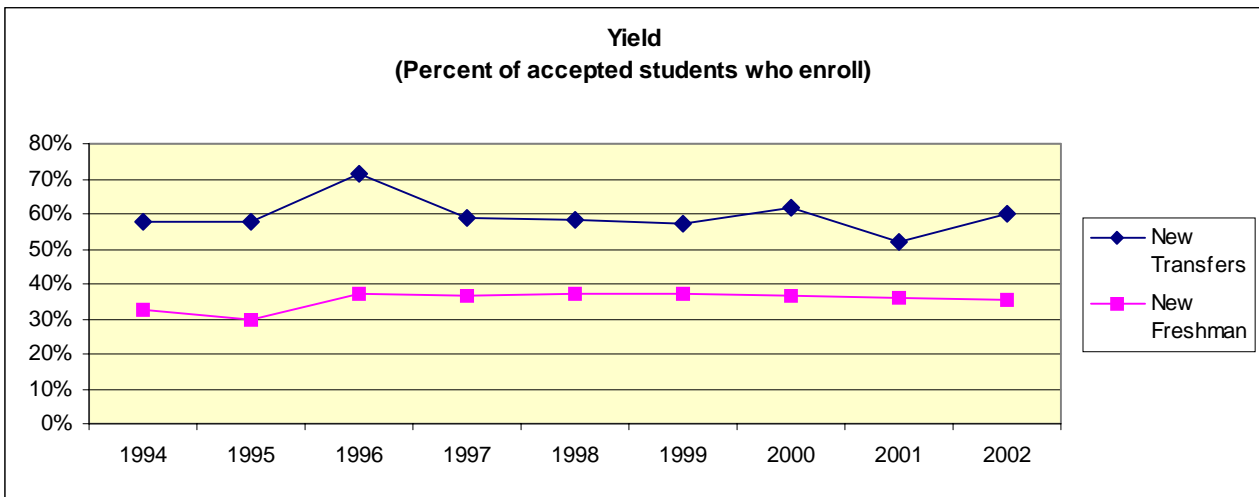
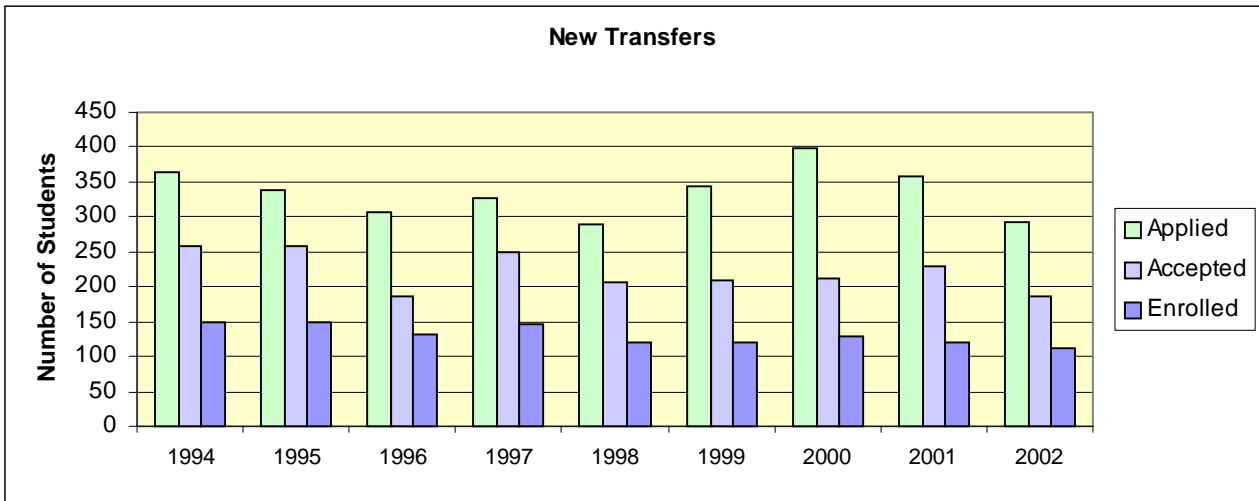
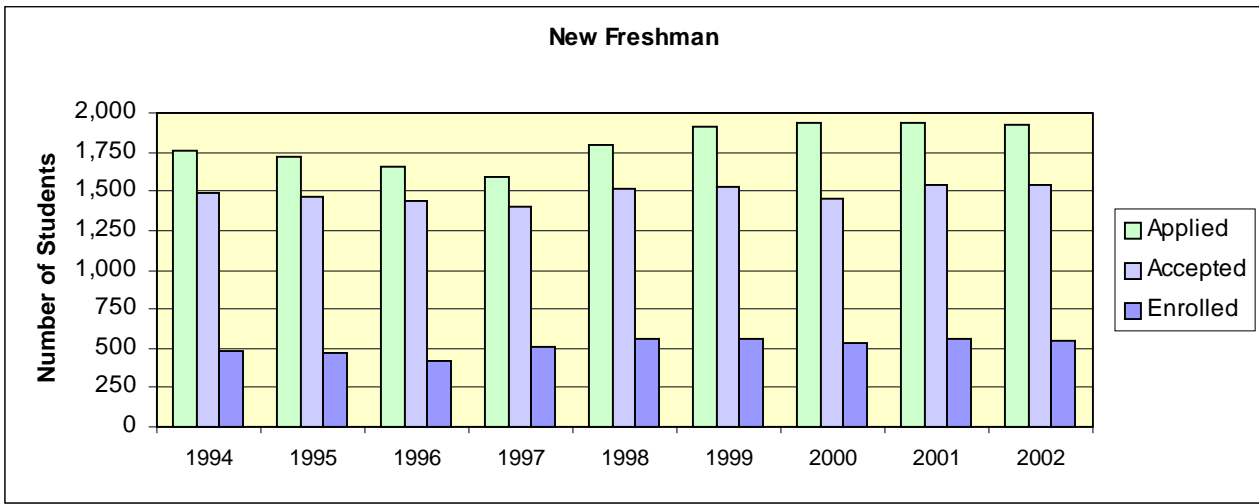
First-time Freshmen & Transfers

(Source: Admission's Office "Entering Class Profile")

Freshman	1994	1995	1996	1997	1998	1999	2000	2001	2002
Inquired*	23,611	26,688	24,174	25,157	26,535	25,866	30,980	24,542	26,826
Applied	1,760	1,722	1,660	1,592	1,797	1,913	1,941	1,942	1,919
Accepted	1,491	1,463	1,435	1,396	1,521	1,523	1,456	1,545	1,542
Enrolled									
Men	200	214	193	219	237	228	252	244	222
Women	285	258	233	296	320	335	277	313	329
TOTAL	485	472	426	515	557	563	529	559	551
Yield rate for accepted students	32.5%	32.3%	29.7%	36.9%	36.6%	37.0%	36.3%	36.2%	35.7%
Transfers									
Inquired	2,107	2,026	1,919	1,739	1,782	1,696	1,771	1,815	1,929
Applied	364	339	306	327	290	344	397	359	293
Accepted	259	259	185	249	205	210	211	228	187
Enrolled									
Men	57	56	69	55	52	48	51	47	36
Women	93	94	63	92	68	72	79	72	76
TOTAL	150	150	132	147	120	120	130	119	112
	57.9%	57.9%	71.4%	59%	58.5%	57.1%	61.6%	52.2%	59.9%
Special	12	9	4	6	10	12	14	20	17
TOTAL	647	631	562	668	687	695	673	698	680

* "Inquired" includes mailing lists purchased from College Board and other sources.

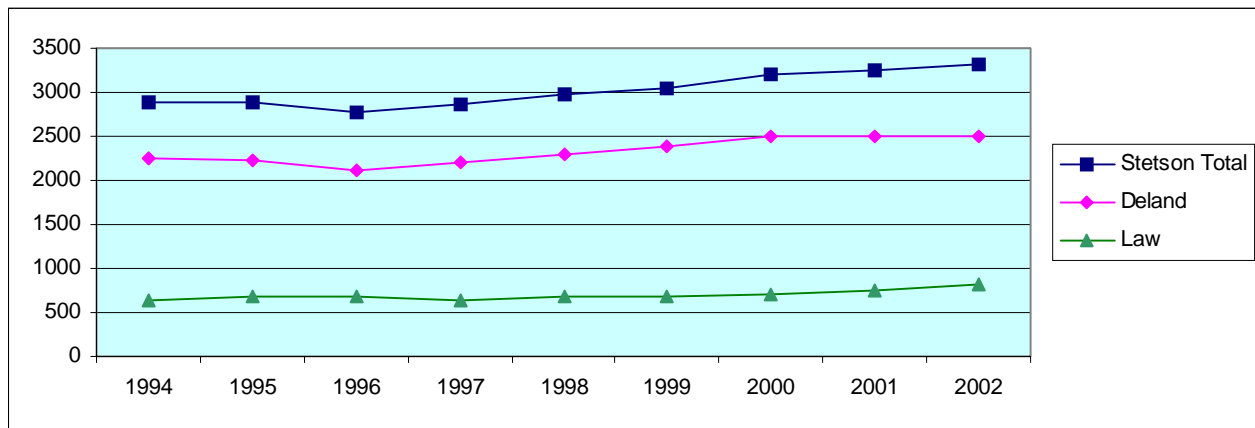




Enrollment

Headcount, Fall Semester (Historical)

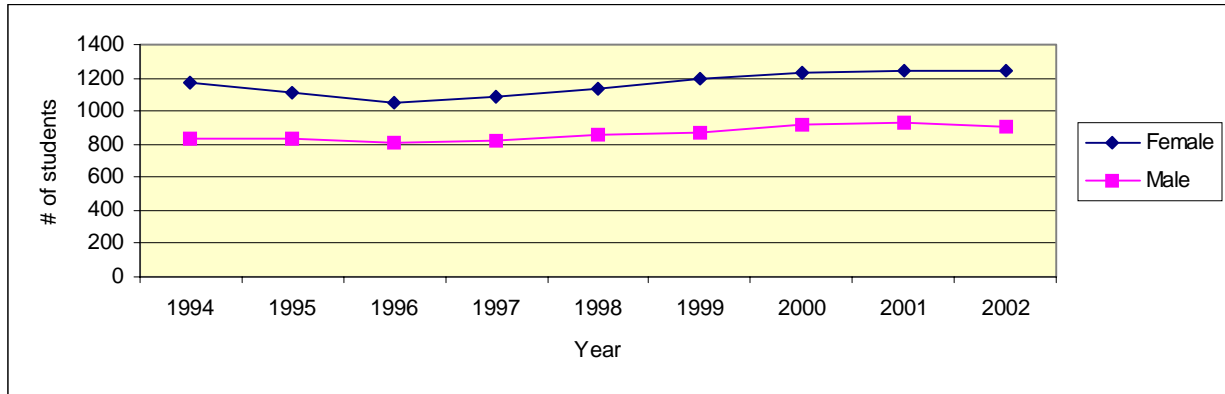
	<u>1994</u>	<u>1995</u>	<u>1996</u>	<u>1997</u>	<u>1998</u>	<u>1999</u>	<u>2000</u>	<u>2001</u>	<u>2002</u>
Full-time									
Undergraduates	1917	1891	1784	1840	1913	1965	2064	2063	2063
Graduates	56	47	45	60	57	48	63	61	81
Post-Bacc	<u>22</u>	<u>20</u>	<u>21</u>	<u>8</u>	<u>9</u>	<u>13</u>	<u>6</u>	<u>6</u>	<u>5</u>
DeLand	1995	1958	1850	1908	1979	2026	2133	2130	2149
College of Law	<u>628</u>	<u>676</u>	<u>668</u>	<u>629</u>	<u>668</u>	<u>658</u>	<u>680</u>	<u>727</u>	<u>711</u>
University (Full-time)	2623	2634	2518	2537	2647	2684	2813	2857	2860
Part-time									
Undergraduates	82	59	67	68	74	97	91	111	79
Graduates	115	117	123	177	167	185	219	227	250
Post-Bacc	<u>56</u>	<u>83</u>	<u>68</u>	<u>59</u>	<u>68</u>	<u>72</u>	<u>48</u>	<u>37</u>	<u>30</u>
DeLand	253	259	258	304	309	354	358	375	359
College of Law	<u>7</u>	<u>3</u>	<u>8</u>	<u>16</u>	<u>11</u>	<u>15</u>	<u>28</u>	<u>23</u>	<u>99</u>
University (Part-time)	260	262	266	320	320	369	386	398	458
Total									
Undergraduates	1999	1950	1851	1908	1987	2062	2155	2174	2142
Graduates	171	164	168	237	224	233	282	288	331
Post-Bacc	<u>78</u>	<u>103</u>	<u>89</u>	<u>67</u>	<u>77</u>	<u>85</u>	<u>54</u>	<u>43</u>	<u>35</u>
Deland	2248	2217	2108	2212	2288	2380	2491	2505	2508
College of Law	<u>635</u>	<u>679</u>	<u>676</u>	<u>645</u>	<u>679</u>	<u>673</u>	<u>708</u>	<u>750</u>	<u>810</u>
TOTAL University	2883	2896	2784	2857	2967	3053	3199	3255	3318



Enrollment by Gender (Historical)

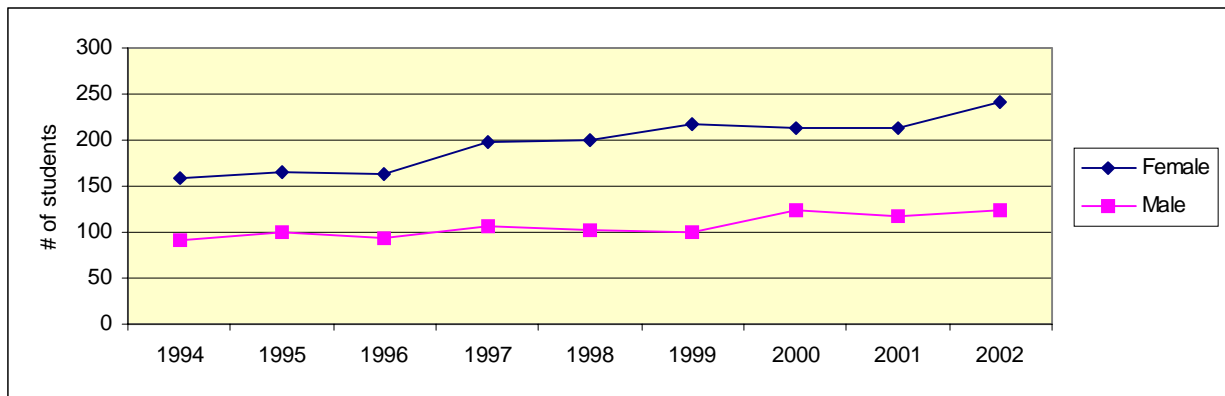
Undergraduate Students

	1994	1995	1996	1997	1998	1999	2000	2001	2002
Male	830	838	804	824	852	864	921	931	900
Female	1169	1112	1047	1084	1135	1198	1234	1243	1242
Total	1999	1950	1851	1908	1987	2062	2155	2174	2142



Graduate Students (excluding College of Law)

	1994	1995	1996	1997	1998	1999	2000	2001	2002
Male	91	101	93	106	102	101	124	118	125
Female	158	166	164	198	199	217	212	213	241
Total	249	267	257	304	301	318	336	331	366

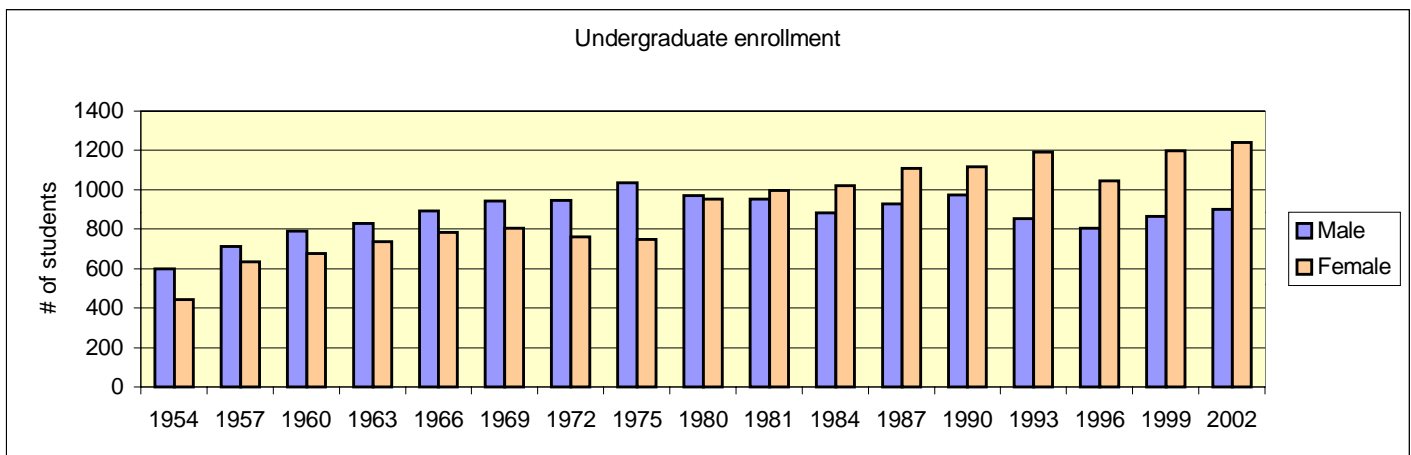
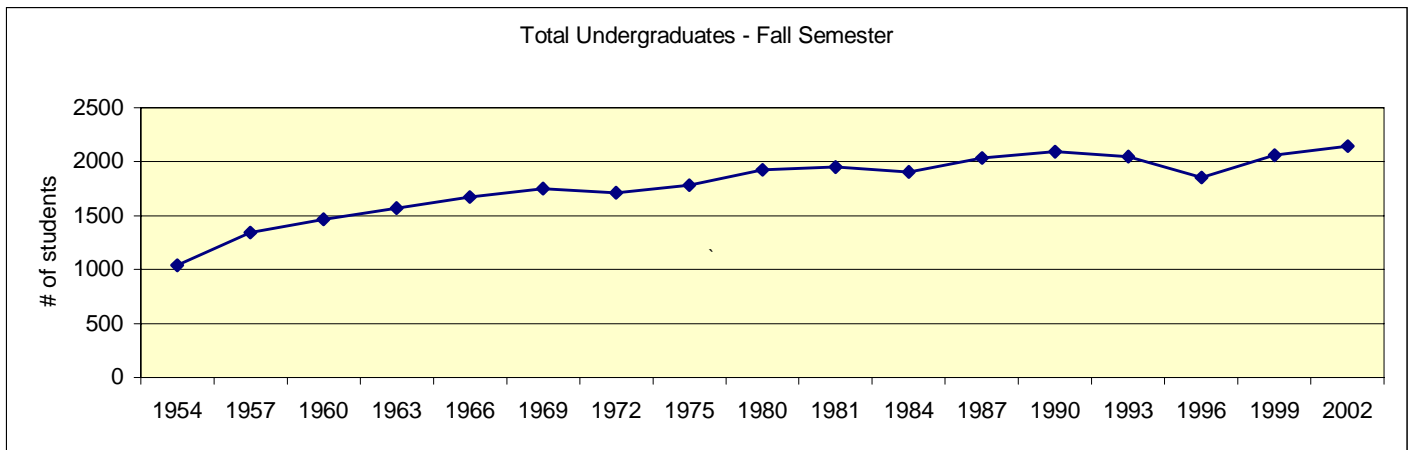


Headcount, Fall Semester (Historical - 1954 to 2002)

Undergraduate

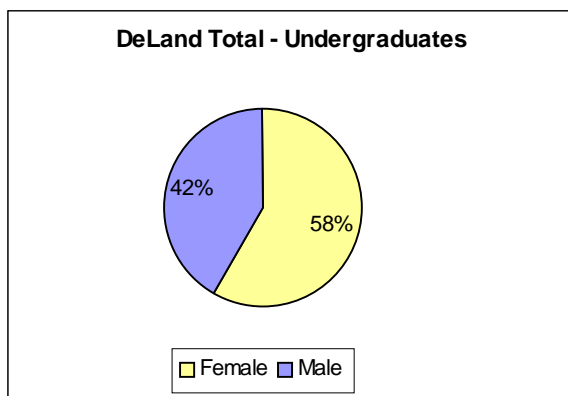
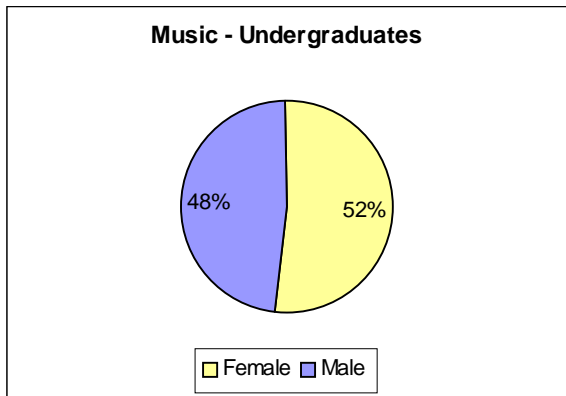
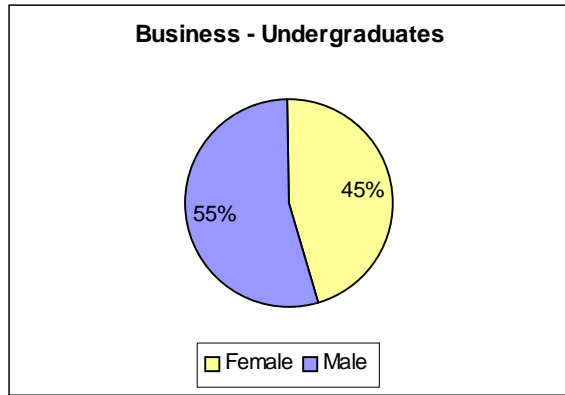
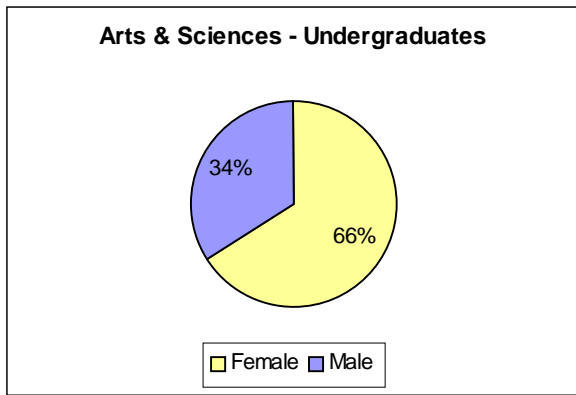
	Full-time			Part-time		
	Male	Female	TOTAL	Male	Female	TOTAL
Fall 1954	584	427	1011	14	17	31
Fall 1957	697	623	1320	14	11	25
Fall 1960	777	664	1441	15	12	27
Fall 1963	800	719	1519	31	18	49
Fall 1966	869	748	1617	24	34	58
Fall 1969	906	760	1666	38	46	84
Fall 1972	899	718	1617	47	45	92
Fall 1975	964	710	1674	71	38	109
Fall 1980	954	932	1886	18	23	41
Fall 1981	932	975	1907	22	22	44
Fall 1984	857	996	1853	25	25	50
Fall 1987	894	1081	1975	33	29	62
Fall 1990	943	1079	2022	30	39	69
Fall 1993	821	1143	1964	34	47	81
Fall 1996	783	1001	1784	21	46	67
Fall 1999	827	1138	1965	37	60	97
Fall 2002	868	1195	2063	32	47	79

Source: HEGIS and IPEDS Enrollment Reports



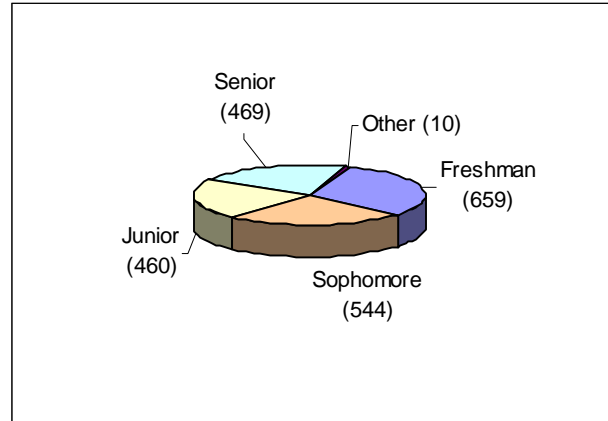
College or School & Gender (Fall 2002)

	Female	Male	Total
Arts & Sciences			
Undergraduate	832	432	1264
DeLand Graduate	126	23	149
Celebration Graduate	40	12	52
A & S Total	998	467	1465
Business			
Undergraduate	310	374	684
DeLand Graduate	39	49	88
Celebration Graduate	12	20	32
Law-MBA Graduate	24	21	45
Total	385	464	849
Music			
Undergraduate only	100	94	194
Law	442	368	810
Stetson Total	1925	1393	3318



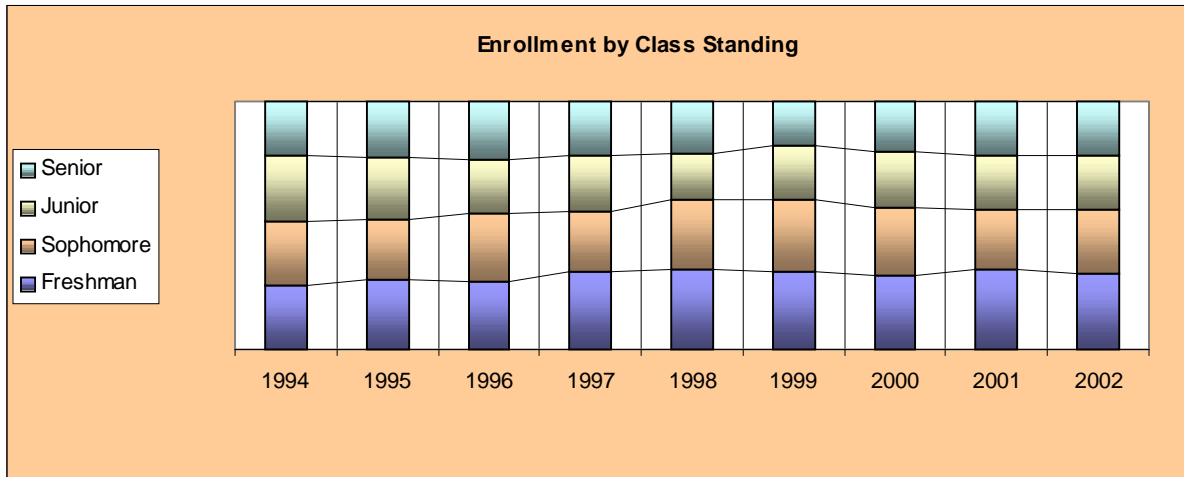
Class Standing - Undergraduate (Fall 2002)

Headcount	Female	Male	Total
Freshman	381	278	659
Sophomore	312	232	544
Junior	265	195	460
Senior	278	191	469
Other	6	4	10
TOTAL	1242	900	2142



Class Standings - Undergraduate (Historical)

	1994	1995	1996	1997	1998	1999	2000	2001	2002
Freshman	517	542	497	597	640	651	632	690	659
Sophomore	513	482	503	464	563	581	586	528	544
Junior	514	472	400	428	366	453	489	480	460
Senior	439	443	435	412	409	359	430	468	469
Other	16	11	16	7	9	18	18	8	10



Ethnicity (Fall 2002)

	Undergraduate		Graduate & Post Bacc		Law	
	#	%	#	%	#	%
African American	73	3.4%	29	7.9%	52	6.4%
Native American	10	.5%	2	.5%	6	.7%
Asian	47	2.2%	4	1.1%	24	3.0%
Hispanic / Latino	109	5.1%	21	5.7%	55	6.8%
White (US Resid)	1766	82.4%	290	79.2%	658	81.2%
Intl / Res. Alien	71	3.3%	8	2.2%	*	
Other / Unknown	66	3.1%	12	3.3%	15	1.9%

*Resident status of students unknown

Enrollment By Ethnicity - Undergraduate (Historical)

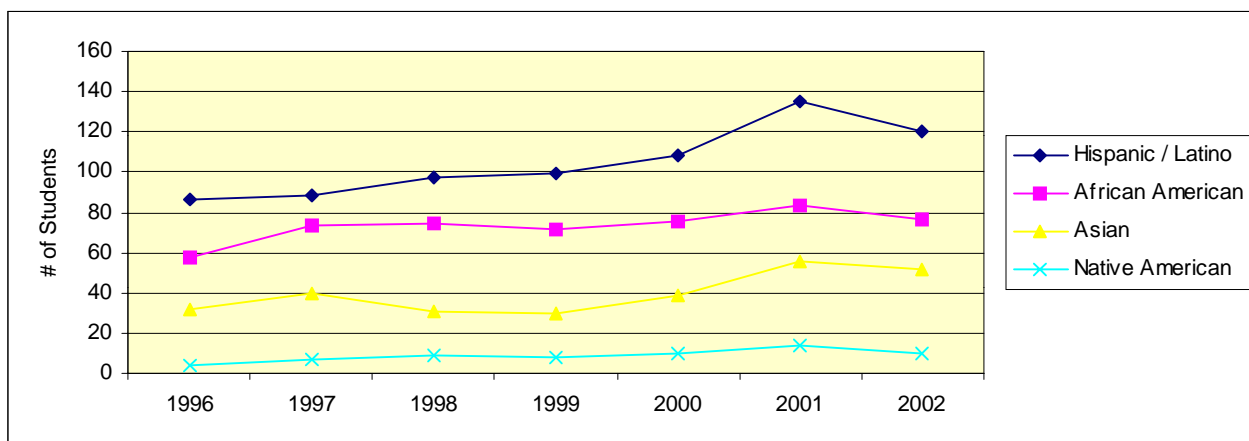
	Fall 1996	Fall 1997	Fall 1998	Fall 1999	Fall 2000	Fall 2001	Fall 2002
African American	58	74	75	72	76	80	73
Native American	4	7	9	8	10	14	10
Asian	32	40	31	30	39	45	47
Hispanic / Latino	86	88	97	99	108	123	109
White (US Resid)	1562	1621	1664	1706	1766	1789	1766
Intl / Non-Res. Alien	109	78*	111	147	156	87	71
Other / Unknown						36	66
Total	1851	1908	1987	2062	2155	2174	2142

Source: IPEDS Enrollment Reports

*Some International/Alien students were classified into specific ethnic groups

ALANA Enrollment - Undergraduate (Historical)

	Fall 1996	Fall 1997	Fall 1998	Fall 1999	Fall 2000	Fall 2001	Fall 2002
Hispanic / Latino	86	88	97	99	108	135	120
African American/ Black	58	74	75	72	76	83	77
Asian	32	40	31	30	39	56	52
Native American / Alaskan	4	7	9	8	10	14	10

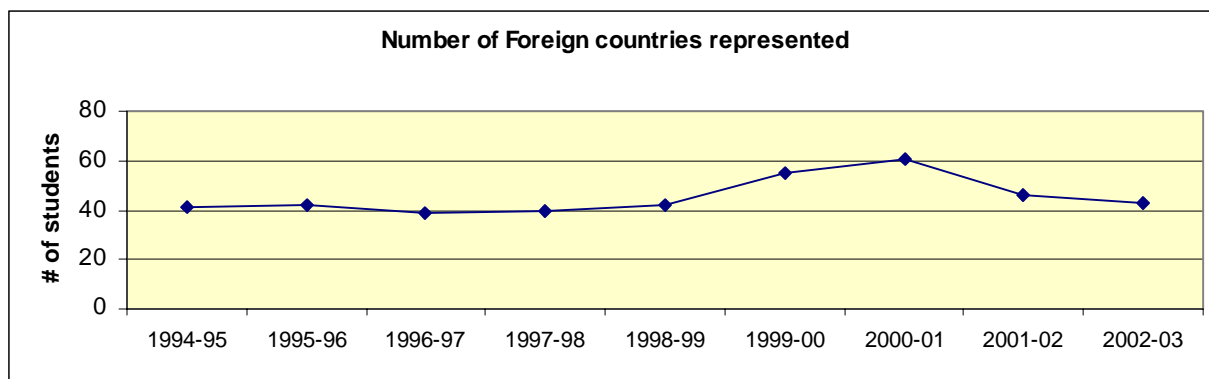


International / Non-Resident Students Home country - Undergraduate (Fall 2002)

Germany	5	Jamaica	2	Bahamas	1
England	5	Bosnia	1	Netherland Antilles	1
Norway	4	Austria	1	Peru	1
Venezuela	4	Aruba	1	Uganda	1
Colombia	3	Saudi Arabia	1	Grand Cayman	1
Cayman Islands	3	Nigeria	1	Russian Federation	1
Japan	2	Bermuda	1	Kazakhstan	1
Spain	2	Hungary	1	Bangladesh	1
Honduras	2	Dominican Republic	1	South Africa	1
Sweden	2	Canada	1	Uruguay	1
India	2	Lebanon	1	Ukraine	1
Finland	2	Switzerland	1	Taiwan	1
Bulgaria	2	Krygzstan	1	Ireland	1
Brazil	2	Ghana	1	Botswana	1
British West Indies	2				

Number of Foreign Countries represented (Historical)

1994-95	1995-96	1996-97	1997-98	1998-99	1999-00	2000-01	2001-02	2002-03
41	42	39	40	42	55	61	46	43



Enrollment by Home State - Undergraduate (Fall 2002)

Enrollment by Home State - Undergraduate (Historical)

	1994	1995	1996	1997	1998	1999	2000	2001	2002
Alabama	6	3	0	1	1	8	6	6	9
Alaska	0	0	0	0	0	1	1	1	1
Arizona		2	2	1	0	0	2	2	2
Arkansas	3	3	2	1	1	1	2	2	2
California	2	1	2	2	4	5	5	5	4
Colorado	4	5	2	8	5	3	2	1	4
Connecticut	26	23	15	19	21	26	27	24	33
Delaware	0	0	0	0	0	0	0	0	0
District of Columbia	0	1	2	2	0	0	0	1	0
Florida	1535	1465	1399	1432	1510	1530	1606	1657	1594
Georgia	57	51	33	32	39	45	40	52	51
Hawaii	0	0	1	1	0	0	0	0	0
Idaho								1	2
Illinois	5	6	12	12	16	15	16	16	11
Indiana	7	7	8	11	7	7	7	6	9
Iowa	0	0	1	4	4	3	2	0	2
Kansas	0	0	0	0	2	3	3	5	6
Kentucky	9	9	9	8	7	11	5	4	6
Louisiana	4	4	2	2	3	3	4	2	4
Maine	4	7	8	8	5	6	3	2	9
Maryland	11	12	13	16	14	12	9	14	18
Massachusetts	24	22	23	33	33	34	33	45	44
Michigan	6	8	12	8	6	6	2	2	3
Minnesota	6	4	4	5	3	3	4	4	4
Mississippi	1	2	1	1	2	2	3	3	2
Missouri	6	6	5	7	9	10	11	9	8
Nebraska	0	0	0	1	0	0	0	0	1
Nevada	1	0	0	0	2	2	1	0	0
New Hampshire	3	5	6	7	6	6	15	13	16
New Jersey	28	28	28	25	15	12	12	14	21
New Mexico	1	1	1	1	2	2	1	1	2
New York	40	49	43	46	47	45	41	47	47
North Carolina	5	8	6	11	11	9	12	10	11
North Dakota	0	0	0	0	0	0	0	1	0
Ohio	21	17	17	15	12	13	11	14	14
Oklahoma	2	4	2	1	2	2	4	5	4
Oregon	0	1	1	3	3	3	3	1	2
Pennsylvania	8	11	13	17	16	23	28	22	31
Puerto Rico	3	2	2	1	0	0	1	2	2
Rhode Island	8	8	7	10	5	3	4	4	8
South Carolina	5	5	6	5	10	12	11	12	13
South Dakota	0	0	1	0	1	1	1	1	1
Tennessee	10	10	8	10	10	9	9	11	14
Texas	9	4	9	10	15	13	17	16	17
Utah	0	0	1	1	1	1	0	3	3
Vermont	2	2	2	3	2	2	4	3	2
Virginia	18	14	12	7	3	7	14	17	19
Washington	3	5	2	1	1	1	1	1	2
West Virginia	0	1	1	1	1	1	1	2	1
Wisconsin	4	4	6	2	1	3	5	5	6
Armed Forces	2	1	0	1	0	3	1	3	3
	1889	1821	1730	1793	1858	1907	1990	2072	2068

Undergraduate Enrollment by Florida County (Historical)

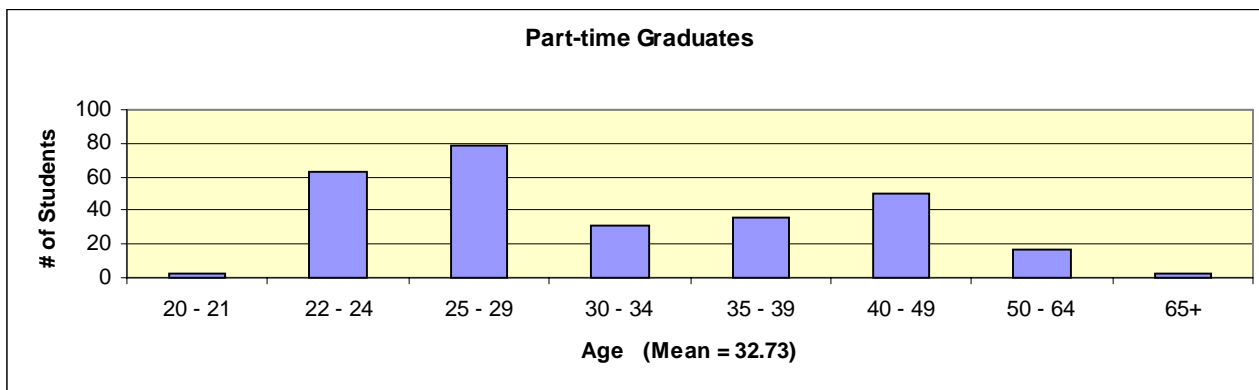
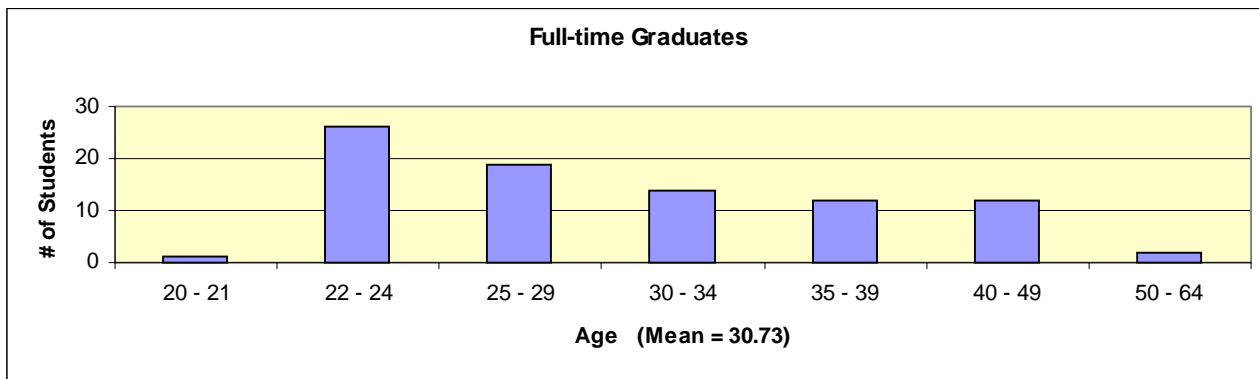
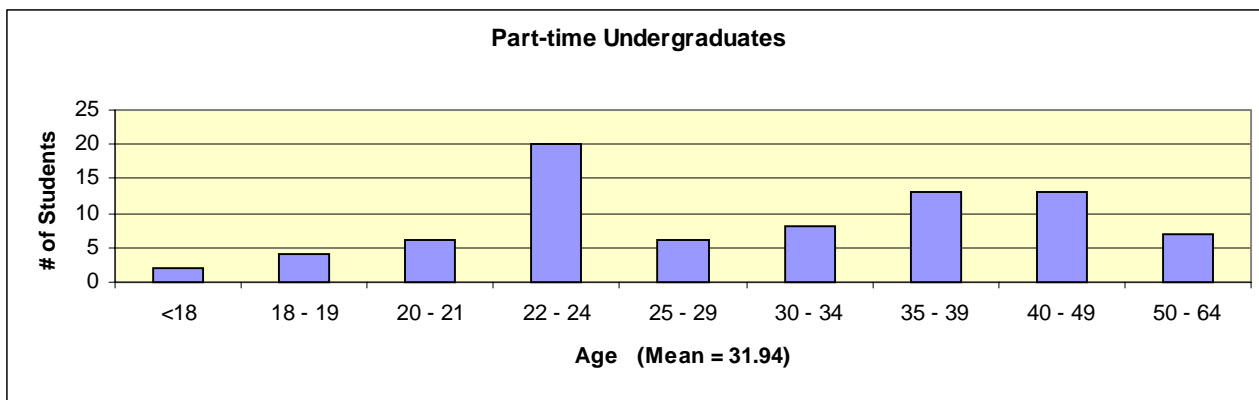
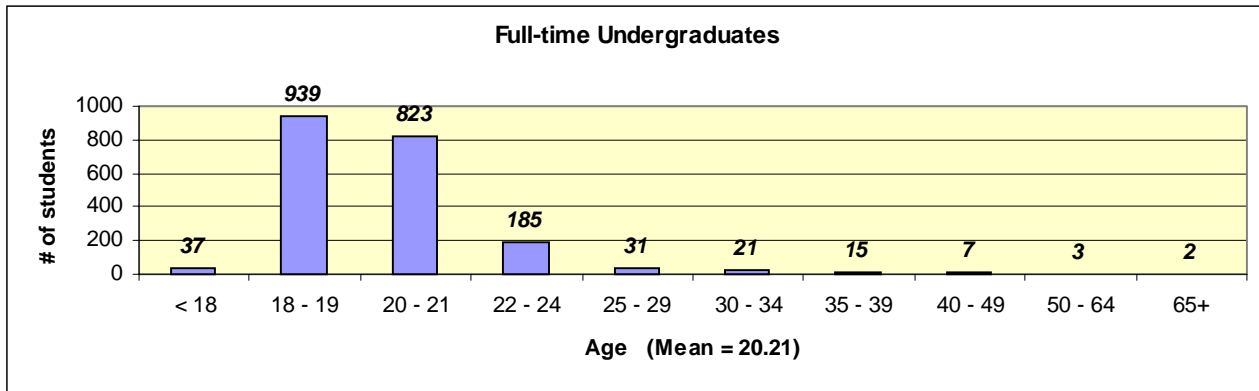
	1998	1999	2000	2001	2002
Alachua	18	17	15	10	13
Bay	9	11	10	10	12
Bradford	3	2	2	1	0
Brevard	67	68	73	71	66
Broward	56	59	73	62	63
Charlotte	14	13	11	10	8
Citrus	5	6	10	16	9
Clay	15	15	12	8	9
Collier	34	34	33	35	28
Columbia	5	4	3	2	2
Dade	38	32	27	24	30
Desoto	2	2	2	2	
Dixie	2	2	2	2	
Duval	46	44	46	50	53
Escambia	6	5	9	11	10
Flagler	14	18	17	21	18
Gadsden	1	1	2	1	
Gilchrist		1			
Gulf		2	2	4	2
Hardee		1	1	1	1
Hendry	2	1	1		1
Hernando	11	8	5	8	9
Highlands	9	8	9	5	4
Hillsborough	60	55	49	44	37
Holmes	1				
Indian River	27	35	36	35	26
Jackson			1		1
Jefferson	2	1	1	1	
Lafayette		2	1	1	1
Lake	41	31	34	40	38

	1998	1999	2000	2001	2002
Lee	58	66	52	49	51
Leon	17	19	15	13	13
Levy		1			
Madison				1	1
Manatee	12	17	17	17	17
Marion	27	29	27	33	35
Martin	23	22	33	29	25
Monroe	7	9	9	8	7
Nassau	3	2	2	2	3
Okaloosa	11	10	9	9	12
Okeechobee	2			1	1
Orange	106	106	96	112	123
Osceola	15	16	13	14	11
Palm Beach	67	58	74	89	87
Pasco	15	18	18	15	15
Pinellas	75	72	76	76	72
Polk	36	45	40	34	44
Putnam	7	10	7	7	8
Santa Rosa	3	2	2	4	5
Sarasota	38	43	49	53	35
Seminole	68	85	80	99	103
St. Johns	13	16	17	19	18
St. Lucie	31	26	25	24	21
Sumter	1	1			1
Suwannee	1	1	1	2	1
Taylor		1			
Union				1	
Volusia	385	376	447	468	420
Walton		1	1		

Enrollment by Religious Affiliation - Undergraduate (Fall 2002)

Anglican	9	Episcopal	52	Pentacostal Holiness	12
Assembly of God	15	Evangelical Ref	3	Presbyterian	75
Baptist	199	Greek Orthodox	14	Protestant Christian	182
Brethren, Nonspec	2	Hindu	7	Quaker	4
Buddhism	5	Islam	2	Reformed	1
Catholic	393	Jain	1	Seventh Day Adventist	4
Church of Christ	11	Jewish	28	Universalist	1
Church of God	4	Lutheran	49	Non Denominational	46
Church of the Nazarene	2	Mennonite	4	No preference	652
Christian & Mission Alliance	1	Methodist	125	Unknown	190
Congregational	2	Mormon Latter Day Saints	3	TOTAL	2142
Disciples of Christ	20	Others	24		

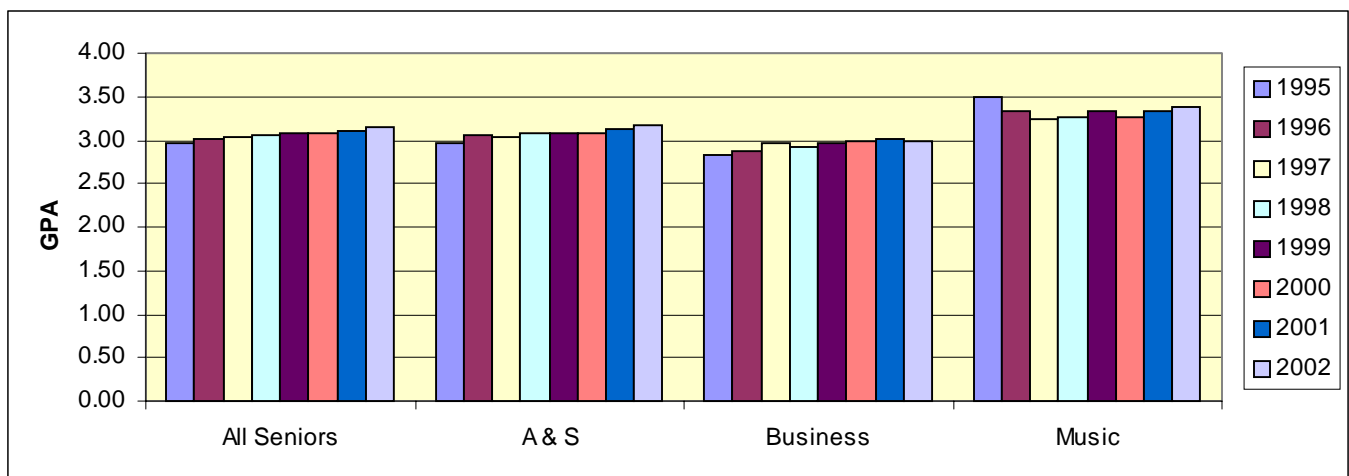
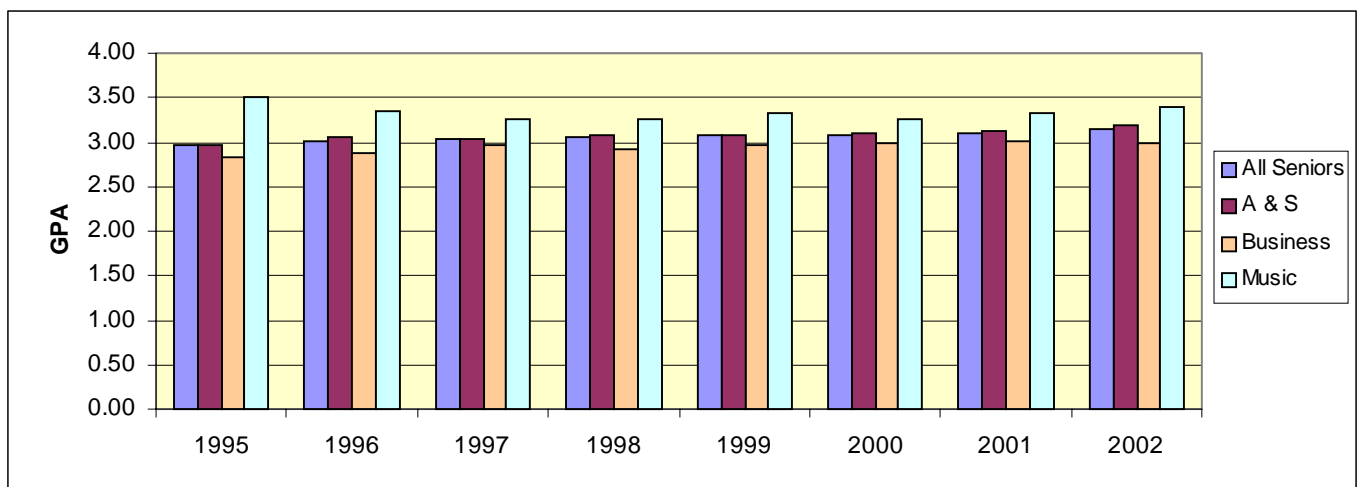
Age Distribution (Fall 2002)



Average Senior GPA's (Historical)

(Spring Semester)	1995	1996	1997	1998	1999	2000	2001	2002
All Seniors	2.97	3.02	3.03	3.05	3.07	3.07	3.11	3.14
Arts & Sciences	2.97	3.05	3.03	3.08	3.08	3.09	3.13	3.18
Business	2.83	2.87	2.97	2.92	2.97	2.98	3.02	2.99
Music	3.50	3.34	3.25	3.26	3.33	3.26	3.33	3.39

Spring 2002	All seniors	A & S	Business	Music
95th Percentile (Top 5%)	3.90	3.90	3.84	3.97
90th Percentile (Top 10%)	3.79	3.80	3.68	3.93
80th Percentile (Top 1/5)	3.61	3.63	3.47	3.79
75th Percentile (Top 1/4)	3.53	3.57	3.39	3.76
67th Percentile (Top 1/3)	3.45	3.47	3.25	3.67
60th Percentile (Top 40%)	3.36	3.37	3.17	3.54
50th Percentile (Top 1/2, median)	3.20	3.22	2.99	3.47
40th Percentile	3.02	3.09	2.84	3.39
25th Percentile	2.75	2.87	2.57	3.00



Class Statistics

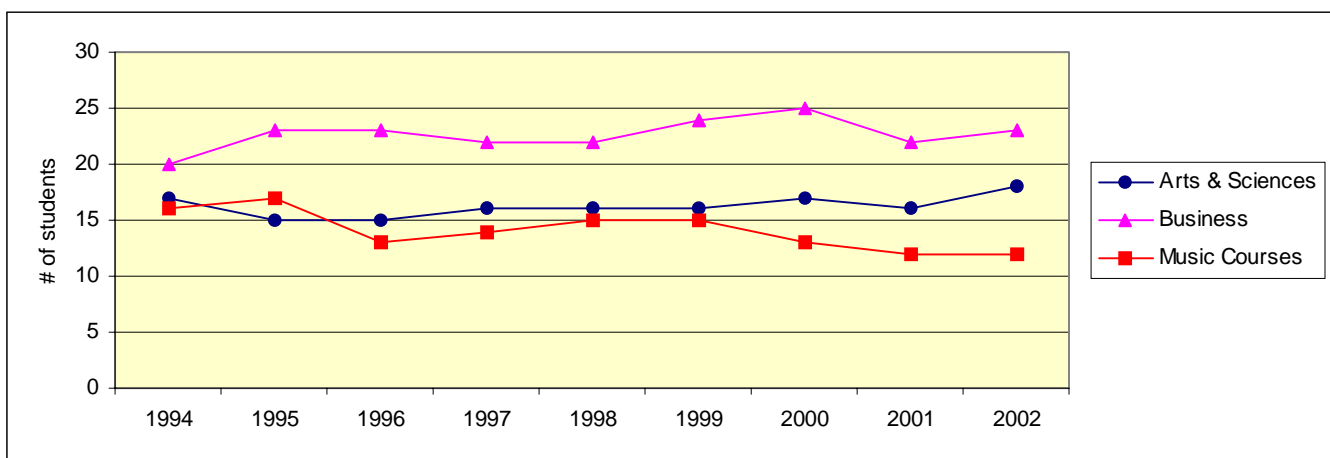
Average Class Size - Undergraduate (Fall 2002)

	Lower Level	Upper Level	Combined
Arts & Sciences	22	12	18
Education	19	10	12
Humanities	19	12	16
Natural Sciences	23	16	18
Social Sciences	27	16	22
Business	29	21	23
Music Courses	13	10	12
Music Ensembles	17	14	16
Applied Music	3	2	2

Independent Study is excluded from the above. The number of Independent Study sections across all schools = 100. Average class size = 1

Average Class Size - Undergraduate (Historical)

	1994	1995	1996	1997	1998	1999	2000	2001	2002
Arts & Sciences	17	15	15	16	16	16	17	16	18
Education	15	15	14	13	14	12	14	13	12
Humanities	15	15	13	14	16	15	17	15	16
Natural Sciences	19	19	16	17	18	18	18	17	18
Social Sciences	18	18	18	18	18	17	21	19	22
Business	20	23	23	22	22	24	25	22	23
Music Courses	16	17	13	14	15	15	13	12	12
Music Ensembles	12	13	12	14	15	15	17	18	16
Applied Music	1	2	2	2	2	2	3	2	2



STUDENT LIFE

Athletics

Intercollegiate Athletics

Stetson is a member of the National Collegiate Athletic Association, and both men's and women's teams compete on a Division I level. Hatter basketball and baseball teams play national schedules and have achieved ranking as major powers.

Men's Teams

Baseball
Basketball
Crew
Cross Country
Golf
Soccer
Tennis

Women's Teams

Basketball
Crew
Cross Country
Golf
Soccer
Softball
Tennis
Volleyball

Intramural Program

The Intramural Program offers young men and women the opportunity to manage, officiate, direct and participate in physical activities with the conviction that this participation will promote stability, coordination, sportsmanship, and a sense of leadership which will touch all aspects of their lives. The following sports are available to both men and women:

Basketball
Billiards
Bowling
Dodge Ball
Flag Football

Indoor Volleyball
Indoor Soccer
Outdoor Soccer
Raquetball
Sand Volleyball

Softball
Swimming
Table Tennis
Tennis
Ultimate Frisbee
Water Polo

Organizations and Clubs

Stetson has many organizations open to all students, affording a variety of activity. Membership in some organizations is based upon special interests or academic achievement; others are primarily social.

Social Organizations

Social Sororities

Alpha Chi Omega
Alpha Kappa Alpha
Alpha Xi Delta
Delta Delta Delta
Pi Beta Phi
Zeta Tau Alpha

Social Fraternities

Alpha Phi Alpha
Alpha Tau Omega
Lambda Chi Alpha
Phi Sigma Kappa
Pi Kappa Phi
Sigma Nu
Sigma Phi Epsilon

Delta Sigma Phi

Honorary Organizations

Beta Beta Beta (Biology)
Gamma Sigma Epsilon (Chemistry)
Gamma Theta Upsilon (Geology)
Lambda Pi Eta
Mortar Board
Omicron Delta Epsilon
Omicron Delta Kappa (Leadership)
Order of Omega
Phi Alpha Delta (Pre-Law)

Phi Alpha Theta
Phi Beta Kappa (General)
Phi Theta Kappa Alumni
Pi Kappa Delta
Pi Kappa Lambda (Music)
Psi Chi (Psychology)
Rho Lambda
Sigma Delta Pi (Spanish)
Sigma Pi Sigma (Physics)

Academically Related Organizations

College of Arts & Sciences
American Chemical Society
American Medical Student Association
Deutsch Club (German)
Phi Alpha Theta (History)
Society of Physics Students
Theta Alpha Phi (Theatre)

Education Program

Chi Sigma Iota (Counseling)
Florida Future Educators of America
Kappa Delta Pi

School of Business

Alpha Kappa Psi
American Marketing Association
Association for Computing Machinery
Stetson Accounting Association

School of Music

American Choral Directors Association
Collegiate Music Educators Convention
Phi Mu Alpha Sinfonia
Sigma Alpha Iota
Society of Composers, Inc.

Religious Organizations

Baptist Collegiate Ministry
Canterbury House
Catholic Campus Ministry
Chi Alpha Christian Fellowship

Fellowship of Christian Athletes
Intervarsity Christian Fellowship
Student Religious Life Council
Wesley House
Young Life

Special Interest Organizations

Black Student Association
Caribbean Club
Chess Club
Club Bridge
College Bowl Team
College Republicans
Common Ground
H.O.L.A. (Latin American)
Indian Student Association

International Student Association
Martial Arts Club
MedEx
Model Senate
Sailing Club
Stetson Gerontological
Stetson Rugby Club
Stetson Young Democrats
Stetson University Film Club

Stetson Mentoring for Achievement
Campaign
Student Alumni Association
Swim Club
Student Ambassadors
Student Athletic Advisory Board
The Q.E.D. Club
World Drum Club

Service Organizations

Best Buddies
Circle K International

Epsilon Sigma Alpha
Habitat for Humanity

Into the Streets
Roots and Shoots

Campus Life Organizations

Alcohol Advisory Board
Council for Student Activities (CSA)
Family Weekend
FOCUS
Greenfeather
Interfraternity Council (IFC)

Multicultural Student Council (MSC)
Panhellenic Council (PH)
Student Advisory Board
Student Government Association (SGA)
The Reporter (Newspaper)
Touchstone Literary Magazine / Poetry
At An Uncouth Hour

ADMINISTRATION, FACULTY AND STAFF

2002-03 Organizational Chart

Faculty

Full-time Faculty - by Rank, Gender, Ethnicity

	NR/ Alien	Black, non-Hispanic		Asian / Pacific Islander		Hispanic		White, non-Hispanic		Total	
	Women	Men	Women	Men	Women	Men	Women	Men	Women	Men	Women

As of 10/1/93

Professors		1						41	8	42	8
Associate professors						1	2	34	19	35	21
Assistant professors	2	1	1	1	1		1	32	17	34	22
Instructors/Lecturers					1			3	7	3	8
No Academic Rank								6	1	6	1
TOTAL	2	2	1	1	2	1	3	116	52	120	60

As of 10/1/95

Professors		1						41	6	42	6
Associate professors				1		1		36	19	38	19
Assistant professors			3	1	3		3	28	16	29	25
Instructors/Lecturers					1			3	5	3	6
TOTAL		1	3	2	4	1	3	108	46	112	56

As of 10/1/97

Professors		1		1				38	6	40	6
Associate professors		1			1	2	2	32	25	35	28
Assistant professors			3	1	2			25	17	26	22
Instructors/Lecturers									1		1
TOTAL		2	3	2	3	2	2	95	49	101	57

As of 11/1/99

Professors		1				1		42	10	44	10
Associate professors		1	1		1		2	39	20	40	24
Assistant professors		1	3	1	1	1		13	20	16	24
Instructors/Lecturers							3	4	9	4	12
Other faculty		1						3	4	4	4
TOTAL		4	4	1	2	2	5	101	63	108	74

As of 11/1/01

Professors		1						47	12	48	12
Associate professors		1	3		2		2	35	18	36	25
Assistant professors	1	3	1	1		3		12	23	20	24
Instructors/Lecturers						1	3	7	12	8	15
Other faculty				1				5	2	6	2
TOTAL	1	5	4	2	2	4	5	106	67	118	78

Source: IPEDS Fall Staff Survey

Percent of Full-Time teaching Faculty with Terminal Degrees - Historical

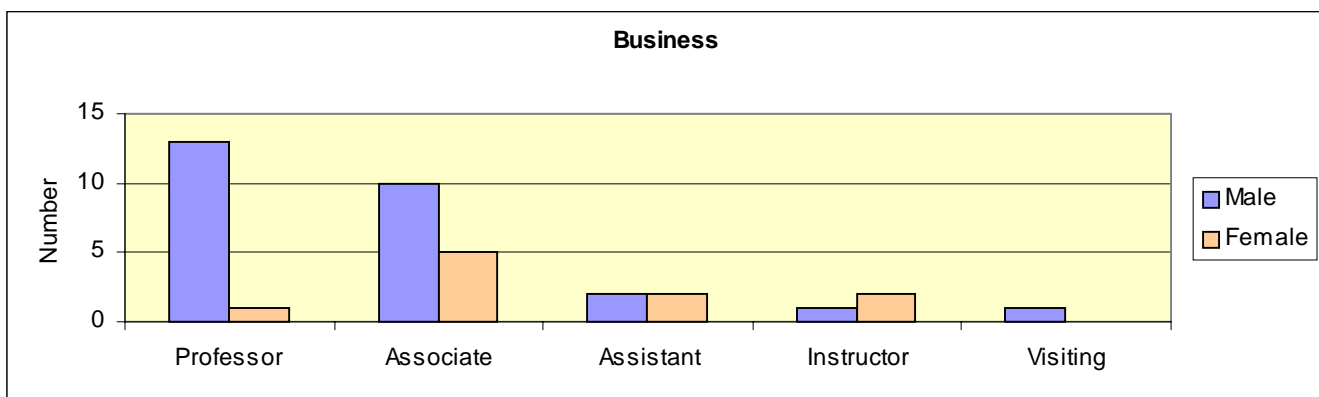
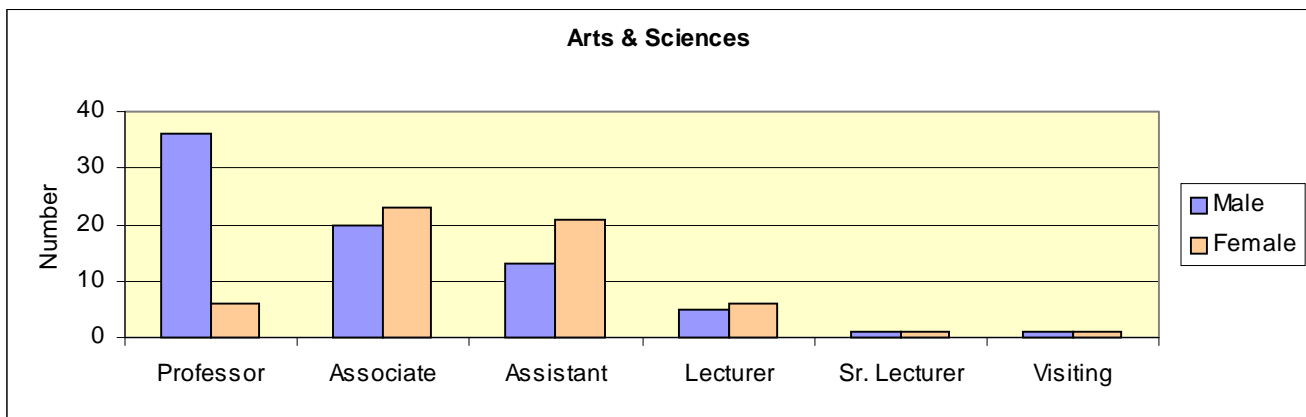
	1995	1996	1997	1998	1999	2000	2001	2002
Professors	*	100%	100%	100%	100%	100%	100%	100%
Associate Professors	*	100%	100%	100%	98%	98%	98%	97%
Assistant Professors	*	85%	98%	90%	80%	83%	84%	84%
Instructors/Lecturers/Visiting Senior Lecturer	*	50%	38%	44%	50%	51%	54%	45%
TOTAL	*	93%	96%	90%	88%	87%	88%	88%

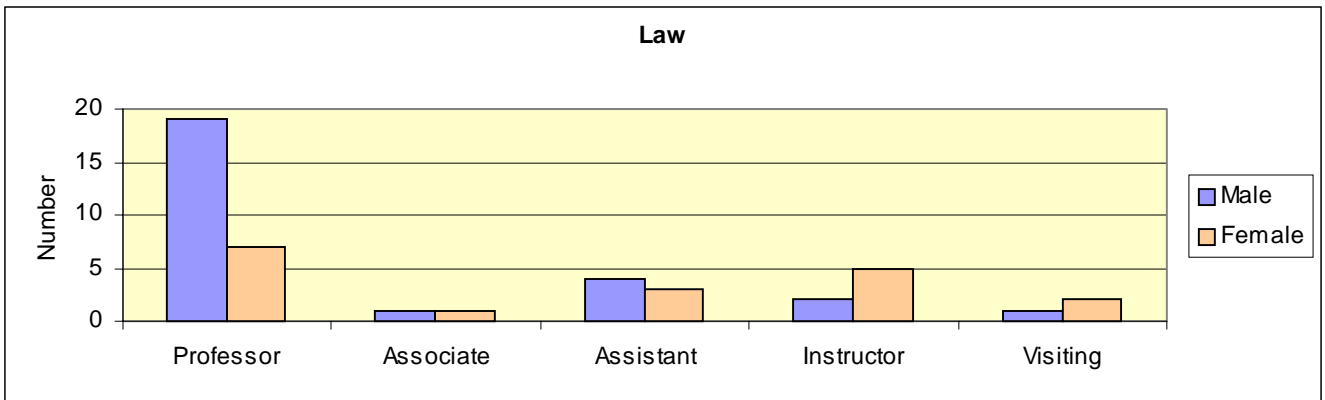
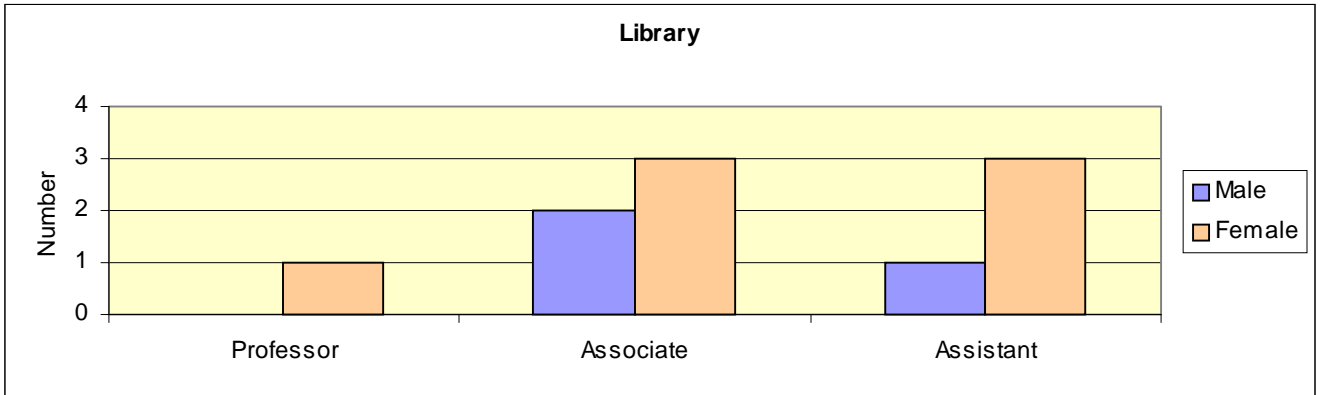
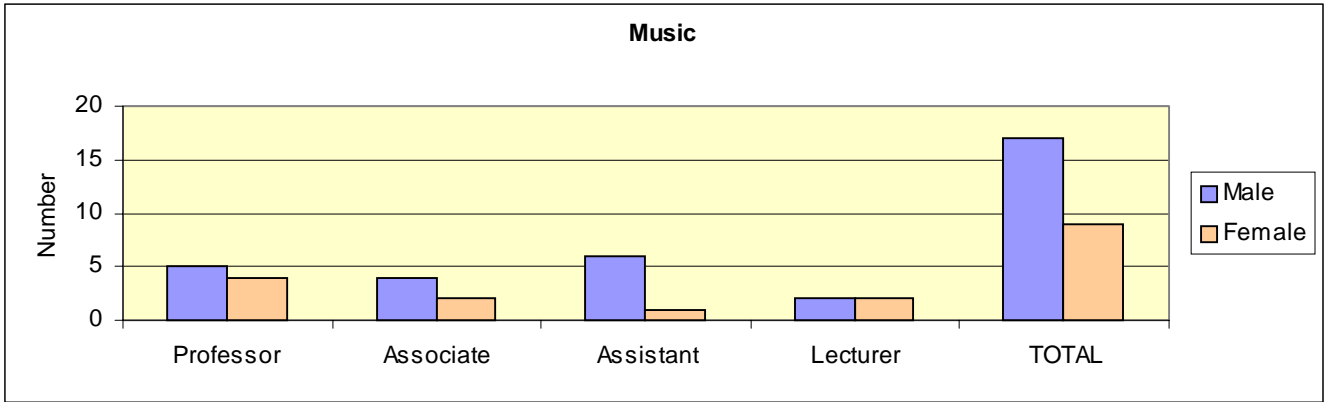
*Not available

Full-time Faculty By School and Gender (Fall 2002)

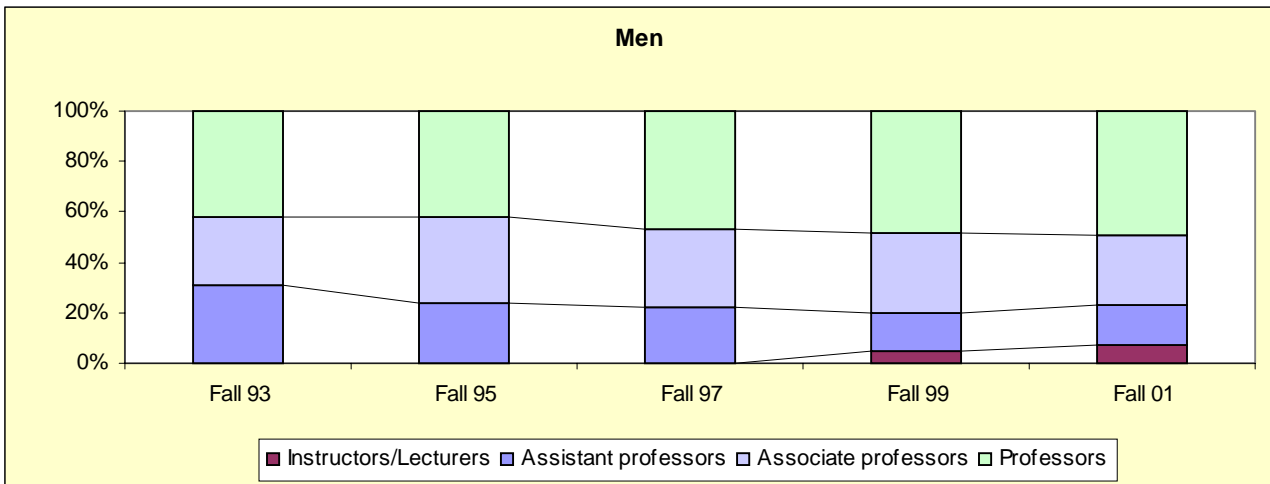
(includes Sabbaticals/Leaves)

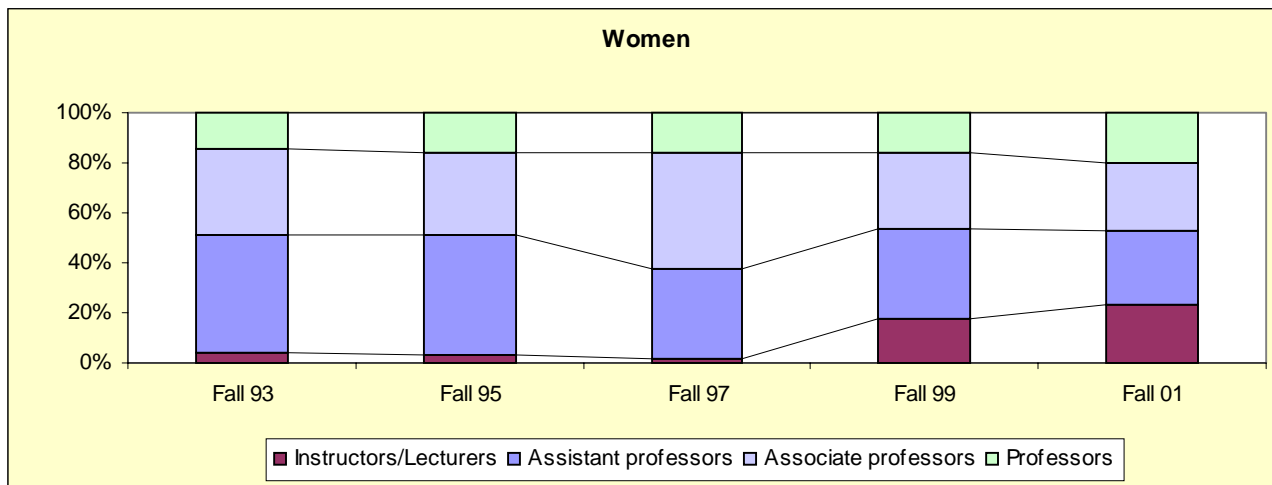
	Arts & Science		Business		Music		Library		Law	
	Male	Female	Male	Female	Male	Female	Male	Female	Male	Female
Professor	36	6	13	1	5	4		1	19	7
Associate	20	23	10	5	4	2	2	3	1	1
Assistant	13	21	2	2	6	1	1	3	4	3
Instructor			1	2					2	5
Lecturer	5	6			2	2				
Sr. Lecturer	1	1								
Visiting	1	1	1						1	2
TOTAL	76	58	27	10	17	9	3	7	27	18





Full-time Instructional Faculty by Gender - Historical





Source: IPEDS Faculty Salary Survey

Faculty-Student Ratio

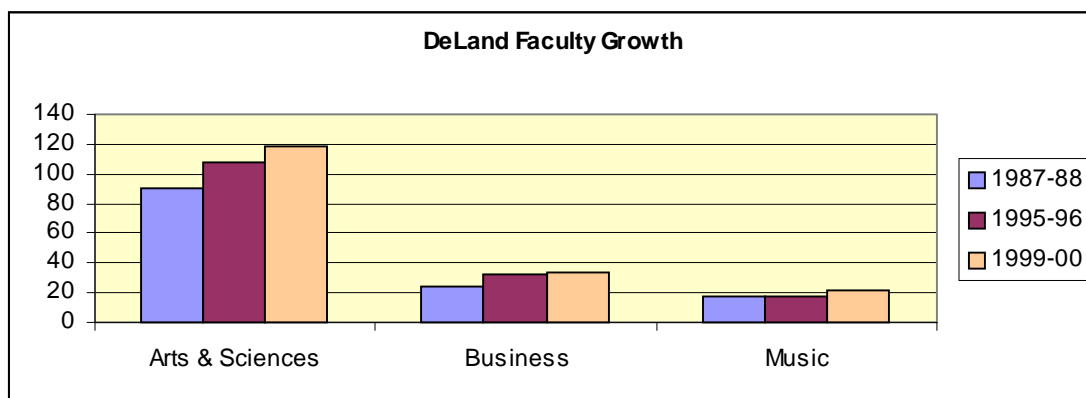
The table below shows the ratio of full-time equivalent undergraduate students to full-time equivalent instructional faculty for the fall semester.

Fall 1995	Fall 1996	Fall 1997	Fall 1998	Fall 1999	Fall 2000	Fall 2001	Fall 2002
11 to 1	10.7 to 1	10.6 to 1	10.5 to 1	10.5 to 1	10.4 to 1	*	10.7 to 1

*not available

DeLand Full-time Faculty Growth (1987-88 to 1999-00)

	1987-88	1995-96	1999-00	Net Gain Since 1987-88	Net Gain Since 1995-96
Arts & Sciences	90	108	118	28	10
Business	24	32	33	9	1
Music	17.5	18	21	3.5	3
TOTAL	131.5	158	172	40.5	14



Presidents of Stetson University

H. Douglas Lee	1987- Present
Pope A. Duncan	1977 - 1987
George R. Borders	(Acting) July, 1976 to July, 1977
John E. Johns	1969 – 1976 (Acting, June, 1969 to April, 1970)
Paul F. Geren	1967 – 1969
J. Ollie Edmunds	1948 – 1967
Harry C. Garwood (acting)	September to December, 1947
William Sims Allen	1934 – 1947
Charles S. Farriss (acting)	January to August, 1934
Lincoln Hulley	1904 – 1934
Charles S. Farriss (acting)	September 1903 to September 1904
Warren S. Gordis (acting)	September, 1895 to June, 1896
John F. Forbes	1885 – 1903

Board of Trustees (2002-2003)

Cynthia R. Brown Daytona Beach, Florida	R. Dean Hollis Omaha, Nebraska
J. Hyatt Brown Daytona Beach, Florida	Jill Jinks Atlanta, Georgia
S. Sammy Cacciatore, Jr. Melbourne, Florida	Joseph W. Landers, Jr. Tallahassee, Florida
Max Cleland Atlanta, Georgia	H. Douglas Lee DeLand, Florida
Nestor De Armas Orlando, Florida	Carroll E. Lewis Ocala, Florida
Diane Disney State College, Pennsylvania	Christine E. Lynn Boca Raton, Florida
Michael Fronk Winter Park, Florida	Harvey L. Massey Maitland, Florida
Franklin T. Gaylord Eustis, Florida	M. Lee McGraw Osterville, Massachusetts
Dolly Hand Belle Glade, Florida	Richard A. McMahan DeLand
Mark C. Hollis Lakeland, Florida	Robert E. Montgomery Palm Coast, Florida

Earnest W. Murphy, Jr.
Daytona Beach, Florida

Jane Edmunds Novak
Ponte Vedra Beach, Florida

Thomas Prince
Winter Park, Florida

Terry J. Rhodes
Tallahassee, Florida

David B. Rinker
West Palm Beach, Florida

David M. Strickland
Jacksonville, Florida

Thomas E. Stringer, Sr.
Tampa, Florida
(Chair, Law Board)

Arthur P. Sullivan
Palm Beach, Florida

Thomas F. Wands
DeLand, Florida

Al Weiss
Lake Buena Vista, Florida

Officers, Trustee Emeriti

Doyle E. Carlton, Jr.
Wauchula, Florida

Mack N. Cleveland, Jr.
Sanford, Florida
(General Counsel)

Pope Duncan
DeLand
(Chancellor Emeritus)

Thomas R. Horton
DeLand, Florida

Hal S. Marchman, Jr.
Holly Hill, Florida
(Assistant Secretary)

Dennis C. McNamara, Sr.
Orlando, Florida

John L. Pelham
East Palatka, Florida

B. Frank Wheeler, Jr.
Oviedo, Florida

Patricia M. Wilson
Frostproof, Florida

Academic and Administrative Officers

H. Douglas Lee
President

Shahram Amiri
Vice President for Information Technology

James R. Beasley
*Vice President for Administration and Chief
Operating Officer*

Sally Dowling
Vice President for Finance

David S. Noyes, Sr.
Vice President for Facilities Management

Deborah Thompson
Vice President for Enrollment Management

Susan Anderson
Executive Director for Alumni Relations

Brian G. Miller
*Executive Director of Marketing and
Communications*

Gary W. Vause
Vice President & Dean of the College of Law

Grady Ballenger
Dean of the College of Arts and Sciences

Paul E. Dascher
Dean of the School of Business Administration

James E. Woodward
*Dean of the School of Music and
Chair of the Council of Deans*

Dorothy E. Bressi
*Associate Vice President of College Relations,
College of Law*

Ronald D. Clifton
*Associate Vice President and Director of
Stetson University Center at Celebration*

Linda P. Davis
Associate Vice President for Planned Giving

Joseph J. Estenes, Jr.
*Associate Vice President for Business and
Operations, Director of Public Safety,
College of Law*

Academic Departments / Programs

College of Arts & Sciences

Division

American Studies

Art

Biology

Chemistry

Communication Studies and Theatre Arts

Counselor Education

Economics

English

Geography & Environmental Science

History

Integrative Health Sciences/Sport Management

Mathematics and Computer Science

Modern Languages & Literature

Philosophy

Physics

Political Science

Psychology

Religious Studies

Sociology

Teacher Education

Special Programs

Africana Studies

Applied Ethics

Aquatic and Marine Biology

COSM*S

Digital Arts

Environmental Sciences

Health Care Issues

Honors Program

Humanities

International Studies

Journalism

Latin American Studies

Russian Studies

Stetson Software Institute

Stetson Institute for Social Research

Women and Gender Studies

Chairs

Paul Jerome Croce

(Emily Mieras, Acting Chair, 2002-03)

Dan Gunderson

Michael King

Peter Hauck

Kenneth McCoy

(James Wright, Acting Chair, Fall 2002)

Lynn Landis Long

Neal Long

Thomas Farrell

Bruce C. Bradford

Kimberly Reiter

Michele Skelton

Erich Friedman

Richard Ferland

Rob Brady

Kevin Riggs

Anne Hallum

Toni Blum

Mitchell Reddish

Finnegan Alford-Cooper

(John Schorr, Acting Chair, Fall 2002)

(Charles Vedder, Acting Chair, Spring 2003)

Elizabeth Heins

Chair / Coordinator / Director

Grady Ballenger

Ronald Hall

Melissa Gibbs

Terry Farrell

Michael DeMurga

Eric Perramond

Michele Skelton

William Wayne Dickson

William Wayne Dickson

T. Wayne Bailey

Michael W. McFarland

Illiana Mankin

Paul D. Steeves

Michael Branton

John K. Schorr

Mary R. Pollock

Advising Committees

Pre-Health
Pre-Law
Grant and Fellowships
Discovery
Pre-Engineering

Michael King
T. Wayne Bailey
Karen Kaivola
Leonard Nance
Kevin Riggs

School of Business Administration

Department

Accounting
Decision and Information Sciences
Finance
Management
Marketing

Special Programs

Family Business Center

Chairs

Vincent C. Brenner
Betty M. Thorne
Lawrence J. Belcher
Monique Forte
Michelle A. DeMoss

Chair / Coordinator / Director

Gregory K. McCann